

Puerto Rico



PUERTO-RICO

SPANISH
17-17 OCT
NOVEMBER
SAVED
Exp
de

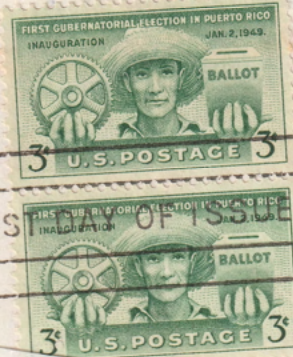
COMMEMORATING
THE INAUGURATION OF
LUIS MUÑOS MARIN,
THE FIRST ELECTED
GOVERNOR OF
PUERTO RICO

DISCOVERED BY COLUMBUS
1493 AND EXPLORED BY
PONCE DE LEON 1509 AND 1521,
PUERTO RICO WAS A SPANISH
COLONY UNTIL 1898, WHEN
IT WAS SECURED BY THE U.S.
THE CAPITAL IS SAN JUAN

ON AUGUST 5, 1947, PRESIDENT
TRUMAN SIGNED THE BILL
GIVING PUERTO RICO THE
RIGHT TO ELECT ITS GOVERNOR,
WHO WAS FORMERLY APPOINTED



SAN JUAN
APR 27
9-AM
1949
P. R.



San Juan, P.R.

CENTAVOS



Space



Christmas



Penguins



flora & fauna OF THE WORLD

BRITISH ANTARCTIC TERRITORY • FIRST DAY COVER



PENGUINS 15

EXPEDITIONS ANTARCTIQUES

ZUIDPOOLEXPEDITIES



Toys



First Day
of Issue

"Toys in the Attic"

Christmas

1970

Art Craft



Christmas

6 U.S.

Christmas

6 U.S.

FIRST DAY OF ISSUE

Christmas

6 U.S.

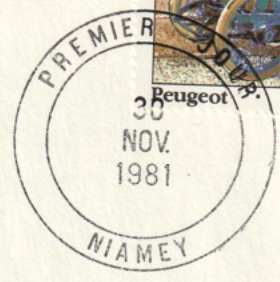
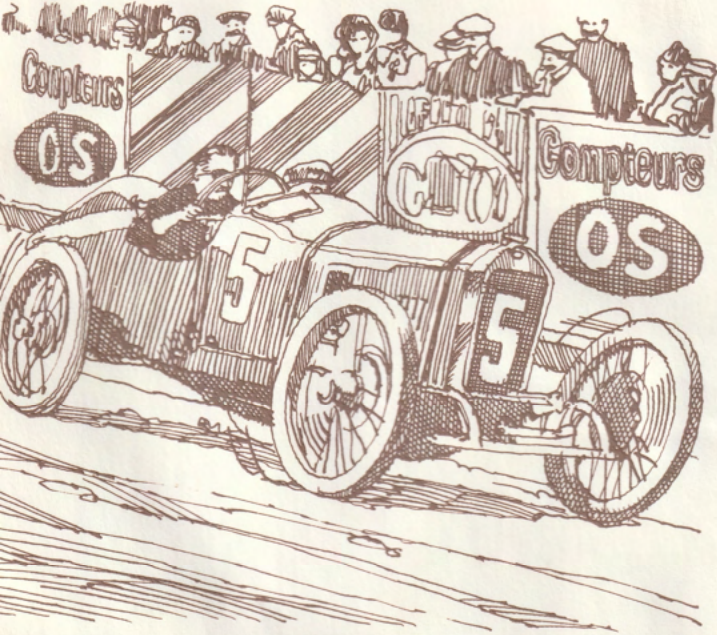
Christmas

6 U.S.



Race Cars

PREMIER JOUR D'EMISSION

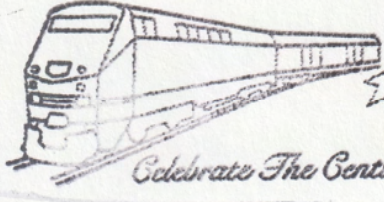
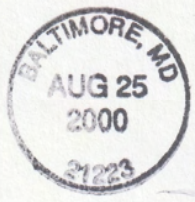


Animals





Trains



Celebrate The Century Express

CELEBRATE THE CENTURY EXPRESS



Louisiana



Military

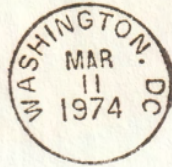


75TH ANNIVERSARY



VFW

FIRST DAY COVER



VFW
75th Anniversary
VETERANS OF SPANISH-AMERICAN and OTHER FOREIGN WARS • U.S. 10c

FIRST DAY OF ISSUE

MILITARY

30



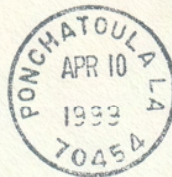
Fruit



Official
First Day
Of Issue



m-m-m-m-m-m-m-m!
Fruit Berries



FIRST DAY OF ISSUE

Stamps on Stamps



STAMPS ON
STAMPS 30

Horses



Reptiles



Running



Owls



OFFICIAL
FIRST DAY OF ISSUE




BARRED
OWL

GREAT GRAY
OWL

SAW-WHET
OWL

GREAT HORNED
OWL

American Owls

 Symbols of Wisdom

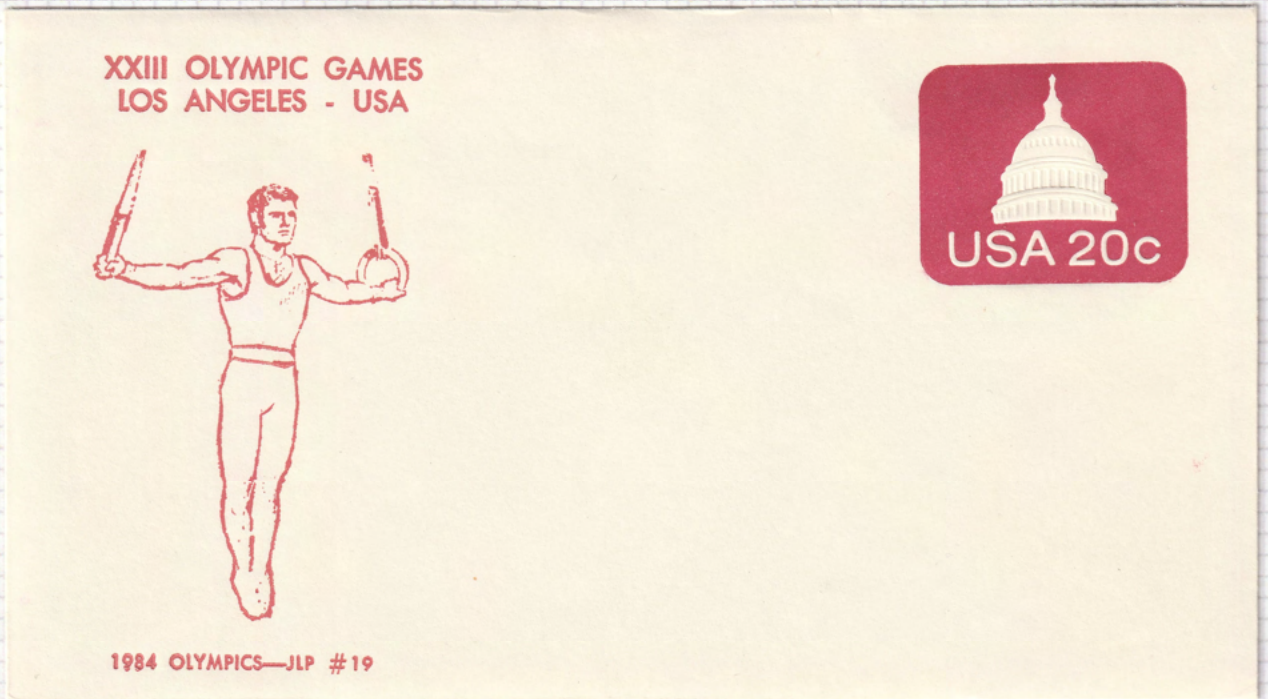


OWLS

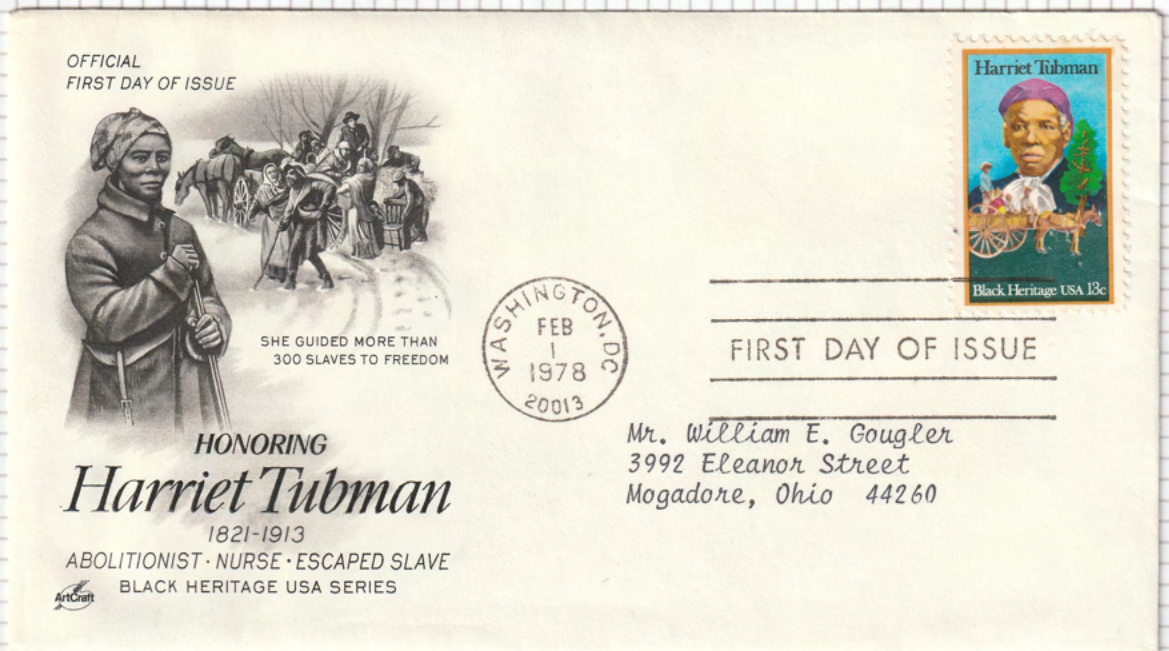
30



Gymnastics



Famous Women



FAMOUS WOMEN
30

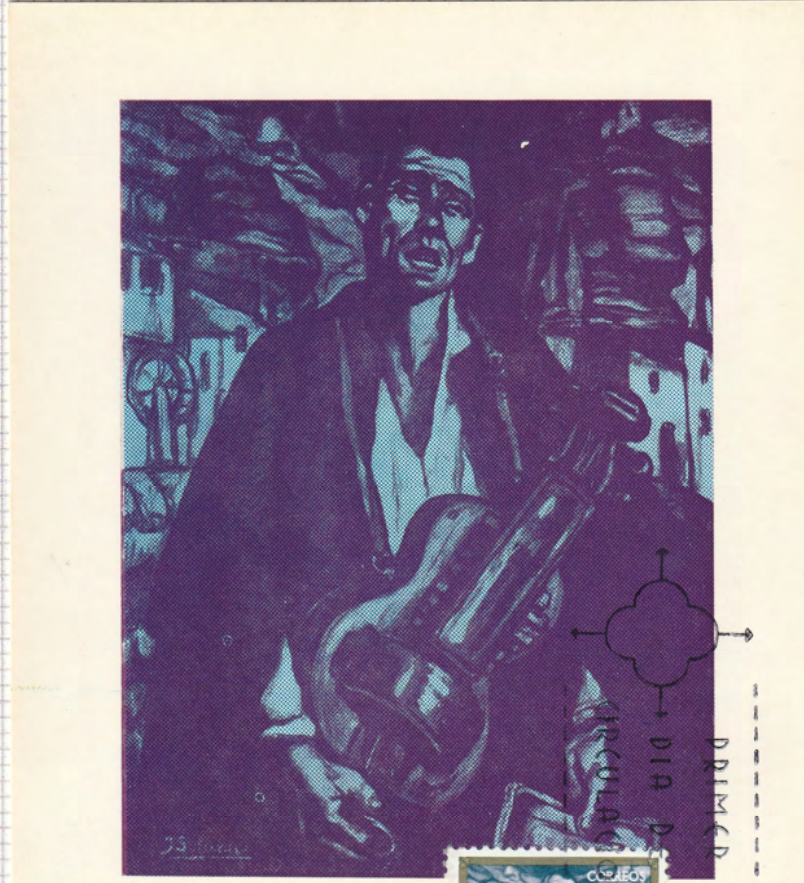
Rockets



Cats



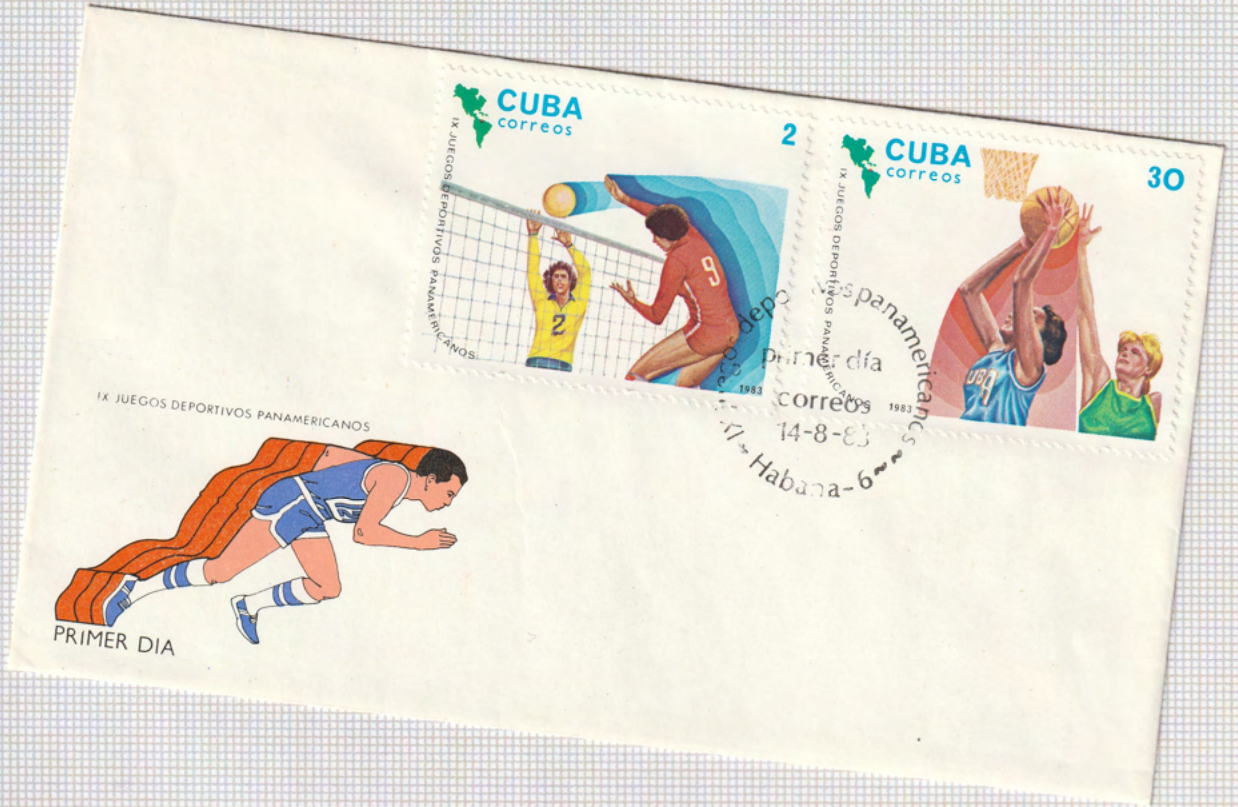
Music - Instruments



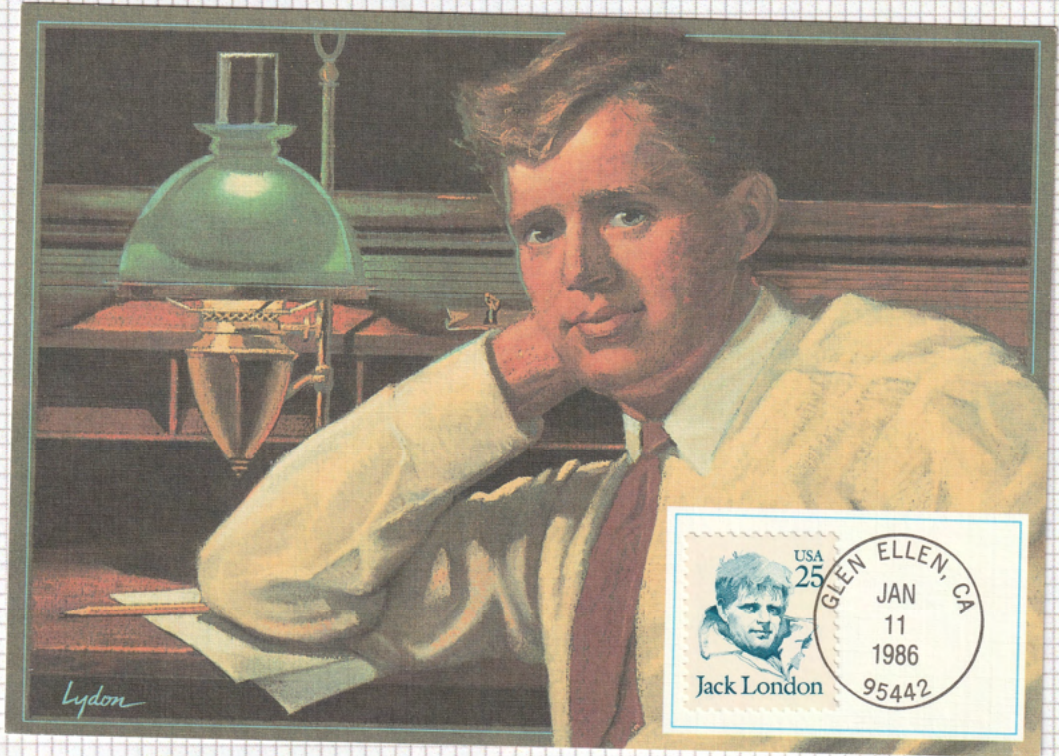
MUSICAL INSTRUMENTS
30



Volleyball



Authors



Dance



Birds





TASTE
OF
TOPICALS



Beards



Lighthouses



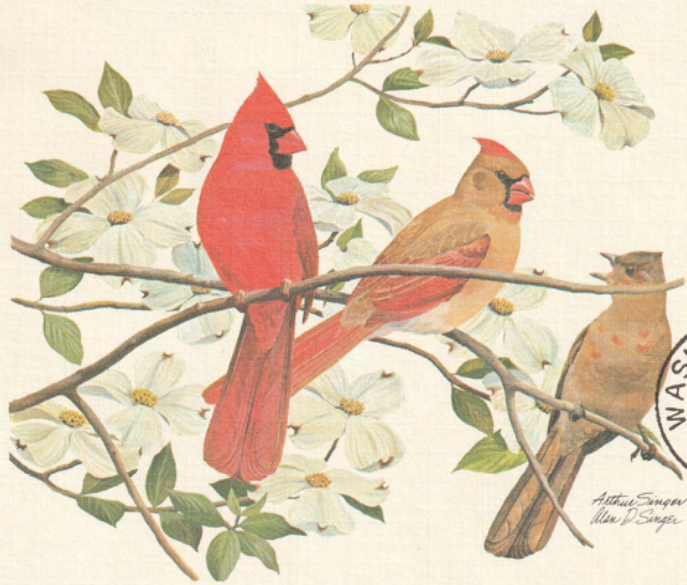
Dogs



Soccer



North Carolina



North Carolina
USA 20c



Cardinal &
Flowering Dogwood



FIRST DAY OF ISSUE

North Carolina

Cardinal & Flowering Dogwood



Disney



Cinderella

in Postage Stamps



First Day of Issue
© 1981 West Library Productions

Gems/ Minerals



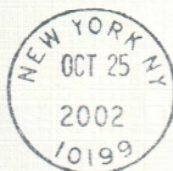
Alabama



Greetings from
Alabama



OFFICIAL FIRST DAY COVER



Mountaineering

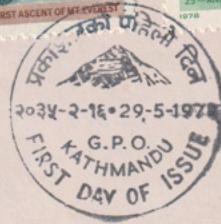


FIRST DAY COVER



25th. Anniversary Of The First Ascent Of
MT. EVEREST

29-5-1978





**AMERICAN
TOPICAL
ASSOCIATION**

DON'T SEE WHAT YOU NEED?

VISIT US ONLINE AT:

AMERICANTOPICAL.ORG/TASTE-OF-TOPICALS-INFO

- | | | | |
|--------------------------|-------------------------|-----------------------|--|
| American Civil War | Cows/Cattle | Love | Ski Jumping |
| American Revolution | Cycling | Madonna & Child | Skiing |
| Angels | Dance | Maps | Snakes |
| Animals | Deer | Marine Life | Soccer |
| Archaeology | Dinosaurs | Masks | Space |
| Architecture | Disney | Medicine/Dentistry | Sports |
| Art-Italian | Dogs | Military | Sports Venues |
| Art/Artists | Easter | Motorcycles | Stained Glass |
| Astronauts | Ecology/Conservation | Movies/Actors | Stamps on Stamps |
| Astronomy | Education | Mushrooms | States of the U.S. |
| Athletes | Elephants | Music | Washington, DC |
| Authors/Poets | Equestrian | Music/Instruments | Puerto Rico |
| Baseball | Europa | Native Americans | Statue of Liberty |
| Basketball | Explorers | Nativity | Swimming/Diving |
| Bears | Extreme Sports | Nurses/Nursing | Tennis |
| Bees | Fairy Tales & Fables | Occupations | Toys |
| Berries | Famous Men | Olympic Symbols/Rings | Track/Field |
| Bicentennial | Famous Women | Olympics | Track/Field - Discus |
| Bicycles | Farm Animals | Olympics, Summer | Track/Field - Hurdles |
| Birds | Fish | Olympics, Winter | Track/Field - Pole Vault/
High Jump |
| Black Heritage | Fire Services | Orchids | Tractors/
Farm Equipment |
| Bobsledding | Fishing | Petroleum | Trains |
| Boxing | Flags | Planes | Transportation |
| Boy Scouts | Flags of the U.S. | Presidents | Trees |
| Bridges | Flowers | Princesses | Triangles |
| Buses | Folk Arts/Crafts | Queen Elizabeth | Trucks |
| Butterflies | Frogs | Red Cross | Turtles |
| Cacti & Succulents | Fruit | Religion | United Nations |
| Camels | Gems/Minerals | Reptiles | Washington, George |
| Cars | Girl Scouts | Rockets | Waterfalls |
| Vintage Cars | Grapes/Wine | Roses | Waterfowl |
| Cartoons & Comics | Gymnastics/Men | Rotary International | Weighlifting |
| Castles & Palaces | Gymnastics/Women | Rowing | Whales & Dolphins |
| Cats | Hispanic Culture | Royalty | Wild Cats |
| Chess | Holidays & Celebrations | Running | Wild West |
| Children | Horses | Sailing/Windsurfing | World Costumes |
| Children's Stories | Hot Air Balloons | Santa Claus | World War II |
| Christianity | Human Rights | Science/Inventors | Wrestling |
| Christmas | Ice Hockey | Science/Scientists | Zebras |
| Christmas Fun | Ice Skating | Seashells | Zepplins |
| Christmas Trees | Ice Skating/Pairs | Shaped Stamps | Zoo Animals |
| Churches &
Cathedrals | Insects | Sheep | <i>and others,
just ask!</i> |
| Churchill, Winston | John F. Kennedy | Ships | |
| Circus | Landscapes | Sailing Ships | |
| Communication | Lighthouses | Shooting Sports | |
| | Abraham Lincoln | Skating, Speed | |

AMERICAN TOPICAL ASSOCIATION
P.O. BOX 2143 · GREER, SC 29652-2143
WWW.AMERICANTOPICAL.ORG