



Naomi Jeanette Robinson Logistics Group

All-Terrain Hydraulic Crane Division

Lift a 350,000 lbs. (3) Level Home on Concrete Stilts

Page:1

149 Drummonds Creek Lane

Summary of Bid Package Documents The Robinson's Waterfront Property

Builder: America's Home Place (Customer Home Builder in Rocky Mount, NC)

AMERICA'S HOME PLACE

1150 N. Wesleyan Blvd.

Rocky Mount, NC 27804

P. (252)210-4276

Property Designer: Naomi Jeanette Robinson Logistics Group (Heavy General Construction)

NAOMI JEANETTE ROBINSON LOGISTICS GROUP

President - Tariq Robinson

1444 Jeffreys Road

Rocky Mount, NC 27804

Toll Free Phone# (844)415-3410

Office# (252)877-2108

Cell# (252)903-3751

Fax# (252)877-2117

Toll Free# (844)415-3410

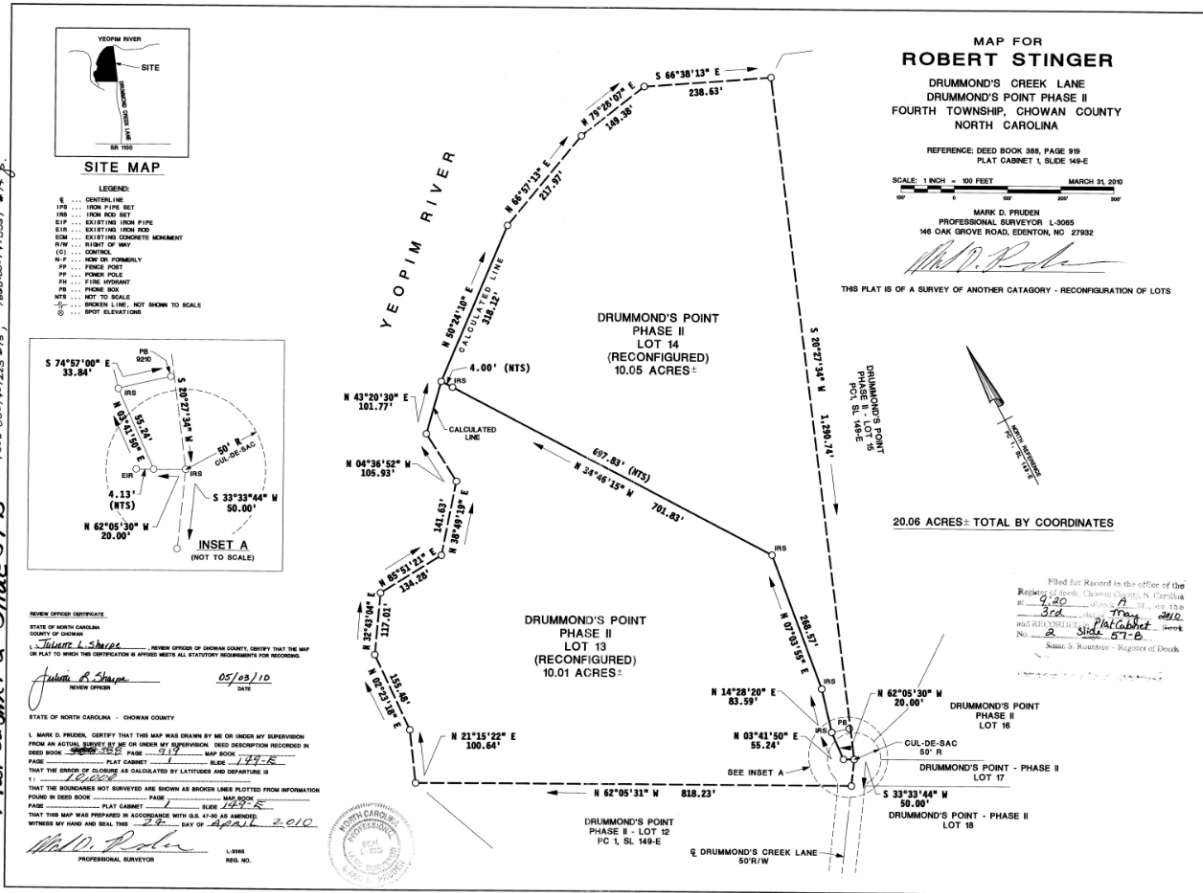
njrtruckingllc@gmail.com

<https://www.njrtruckingllc.com>

Crane Company: Naomi Jeanette Robinson Logistics Group (All-Terrain Hydraulic Crane Division)



Naomi Jeanette Robinson Logistics Group
 All-Terrain Hydraulic Crane Division
 Lift a 350,000 lbs. (3) Level Home on Concrete Stilts
 Page:2



149 Drummonds Creek Lane
 Edenton, NC 27932
 10.05 Acres of Land



Naomi Jeanette Robinson Logistics Group

All-Terrain Hydraulic Crane Division

Lift a 350,000 lbs. (3) Level Home on Concrete Stilts

Page:3

THE PROBABILITY OF HOUSE PAD STILTS LOCATION

149 Drummonds Creek Lane
Edenton, NC 27932
10.02 Acres of Land

Edenton, North Carolina Sea Water Table: _____ 5'

High Risk For Flood with a Hurricane: _____ Yes

Home Business Location: _____ Yes

Type of Permits Requesting

- Residential Building Permits
- Commercial Building Permits
- Electrical Permits
- Plumbing Permits
- Mechanical Permits
- Demolition Permits

Circumference - 500' Total (4) Sides

Dimensions - 150'L x 100'W

The original plan was 10' stilts distance apart. The plan is to box out the entire area with a Caterpillar 313 Small Excavator with 15' Cuts and Then Drill the Steel Pipe Down 5' into Bedrock and then using 12" Concrete Tube with 4"x4"x16' Lumber inside Concrete Tube with Rebar. (The 4x4x16 is used for electric under building pads. Underneath House Pad is Storage Shed for

- Mini Excavator (Caterpillar 306CR Mini Excavator)
 - ◆ Landscaping
 - ◆ Compaction around Stilts
 - ◆ Pipe Laying
- Small Dozer (Caterpillar D1 Dozer)
 - ◆ Grading Stone road and remove snow and ice off stones
 - ◆ Dressing up Property
- Telehandler (Cat TH0642 Telehandler)



Naomi Jeanette Robinson Logistics Group

All-Terrain Hydraulic Crane Division

Lift a 350,000 lbs. (3) Level Home on Concrete Stilts

Page:4

- ◆ Loading Material onto of Deck
- Man Lift (Genie Z-62/40 Man Lift)
 - ◆ Used for cleaning wall of windows
 - ◆ Used for pressure washing Boardwalk
- Side by Side or Golf Kart (Polaris Xpedition XP Side-by-Side)
 - ◆ Used to travel on Deck and around Property. Taking groceries to the house
- Farm and Landscaping Tractors
 - ◆ John Deere Z730M Zero Turn Mower
 - ◆ John Deere 2038R Double Ender and 60" Mowing Deck

The Steel 18" Diameter Steel Pipe 50' Length. Concrete Tube 12" inserted and once Concrete cures the Steel Pipe will be removed

STILTS LOCATION

"O"
GRADE LINE
LOCATION

"L"
GRADE LINE
LOCATION

"M"
GRADE LINE
LOCATION

"N"
GRADE LINE
LOCATION

"P"
GRADE LINE
LOCATION

House Pad (150'L x 100'W)

Grade O - 190' to 290'
(Every 10' = [10])

Grade L - 120' to 300'
(Every 10' = [18])

Grade M - 0

Grade N - 0

Grade P - 0



Naomi Jeanette Robinson Logistics Group

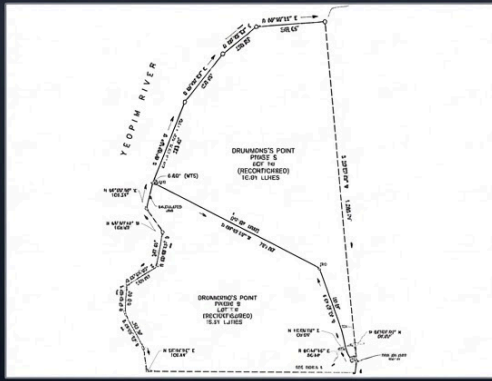
All-Terrain Hydraulic Crane Division

Lift a 350,000 lbs. (3) Level Home on Concrete Stilts

Page:5


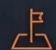
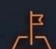

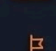
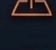
149 DRUMMONDS CREEK LANE - EDENTON, NC PLAT DATA

SURVEY PLAT & SCALE



PLAT SCALE: 1/16" = 12.5' | 1" (16/16") = 200'

SURVEY GRADE LINES

-  **5 Grade Lines Total**
-  **"M" - Drummonds Creek Land:** Main property boundary.
-  **"N" - Top Section:** Neighbors Section.
-  **"O" - Top Left Section:** Water Front (Yeopim River).
-  **"P" - Bottom Left Section:** Neighbors Section.
-  **"Q" - Bottom Right Section:** Neighbors Section.

Note: Refer to original plat for full details and surveyor certification.

PLAT DIAGRAM

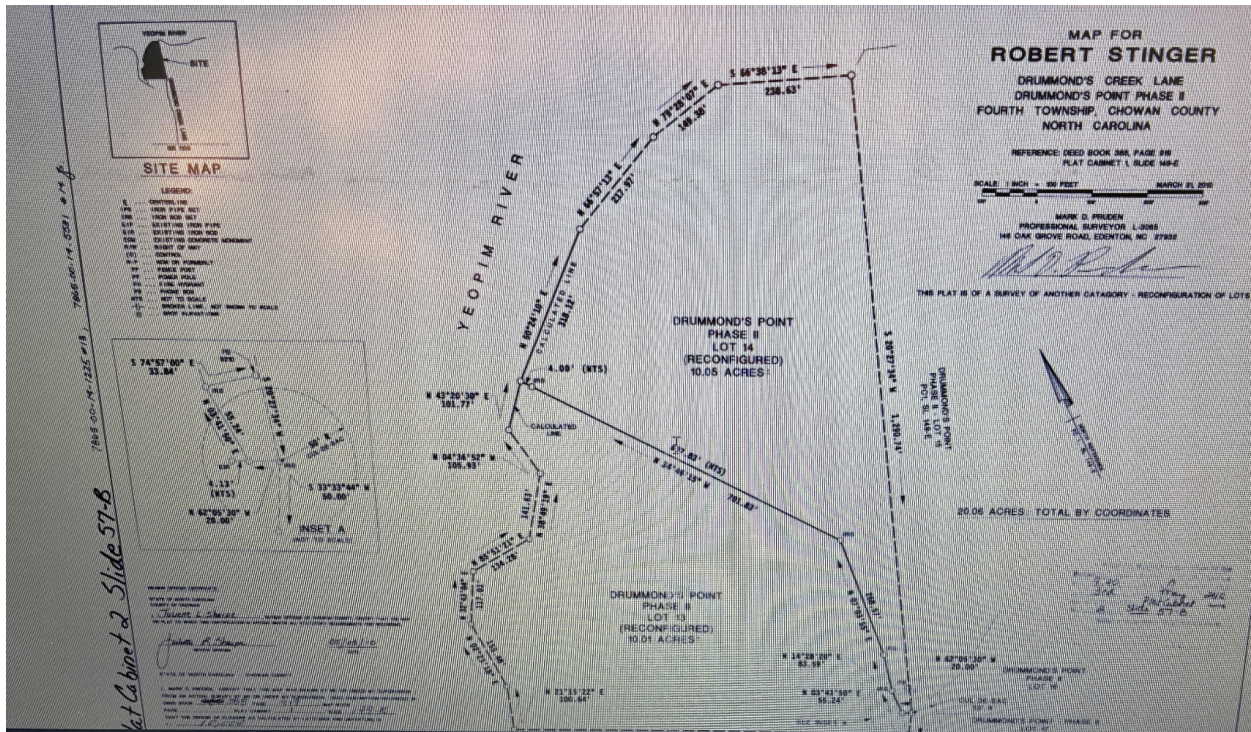


Naomi Jeanette Robinson Logistics Group

All-Terrain Hydraulic Crane Division

Lift a 350,000 lbs. (3) Level Home on Concrete Stilts

Page:6



CUSTOM HOME BUILDER

Americas Home Place

1150 N. Wesleyan Blvd.

Rocky Mount, NC 27804

HOUSE SITE LOCATION

149 DRUMMOND CREEK LANE

EDENTON, NC 27932

10.05 - ACRES

SITE GENERAL CONTRACTOR

N.J.R. Logistics Group Llc

1549 Vance Street

Rocky Mount, NC 27803



Naomi Jeanette Robinson Logistics Group

All-Terrain Hydraulic Crane Division

Lift a 350,000 lbs. (3) Level Home on Concrete Stilts

Page:7

CENTER STAKE SURVEYING PROPERTY

A center stake (or center lath) in surveying is a primary control marker, often set with a nail/hub in the ground, to identify exact project locations like centerlines, foundations, or utility lines. These stakes, typically part of a protected 3-stake 'cage' with flagging, convey precise horizontal/vertical data to contractors.

KEY ASPECTS OF CENTER STAKES:

- Purpose:** Establishes the 'no-touch' reference point for construction (e.g., building corners, road centerlines).
- Protection:** Often surrounded by two additional, highly visible, flagged laths labeled 'Do Not Destroy' or 'Control Point'.
- Information:** Indicate specific locations (e.g., CL for center line) and may show cut/fill data.
- Accuracy:** Set with a metal pin or nail for an exact, immovable reference point.
- Usage:** Define the start/end of project elements, ensuring construction aligns with engineered plans.





Naomi Jeanette Robinson Logistics Group

All-Terrain Hydraulic Crane Division

Lift a 350,000 lbs. (3) Level Home on Concrete Stilts

Page:8

SURVEYING PROPERTY FOR CENTER STAKE

Construction Bid Package Documents

Description Subjects

SUBJECT(S)

- *Spiritual Stress Reliever for Homeowner*
- *To see a sunrise to thank God for another day of love you intended for Adam and Eve*
- *To see the sunset to thank God for taking my pain with you.*
- *To entertain on family with privacy in doing so*
- *To See the environment without cameras and the environment not seeing me*

Construction Bid Package Documents Description

Topics

TOPIC(S):

- *The city underground utilities connections versus above ground connections*
- *The location of the main water lines connection to house with minimum "T" under the property*
- *The septic tank location for stilts house foundation and boardwalk excavation*
- *How to get commercial equipment to the location required for the job*
- *Limit the repairs to the NCDOT and Property Owner for damages to property*
- *All Material Supplies The Homeowner wants to be processed as a MVD Quote with family members using his information to go thru Lowe's Pro for outside sales agent*



Naomi Jeanette Robinson Logistics Group

All-Terrain Hydraulic Crane Division

Lift a 350,000 lbs. (3) Level Home on Concrete Stilts

Page:9

**Location of House Pad Probability of a
Sunrise and a Sunset**

Then I was focused on equipment required to do what I visioned. The equipment has to be big enough to handle the weight capacity and small enough to transport and operate.

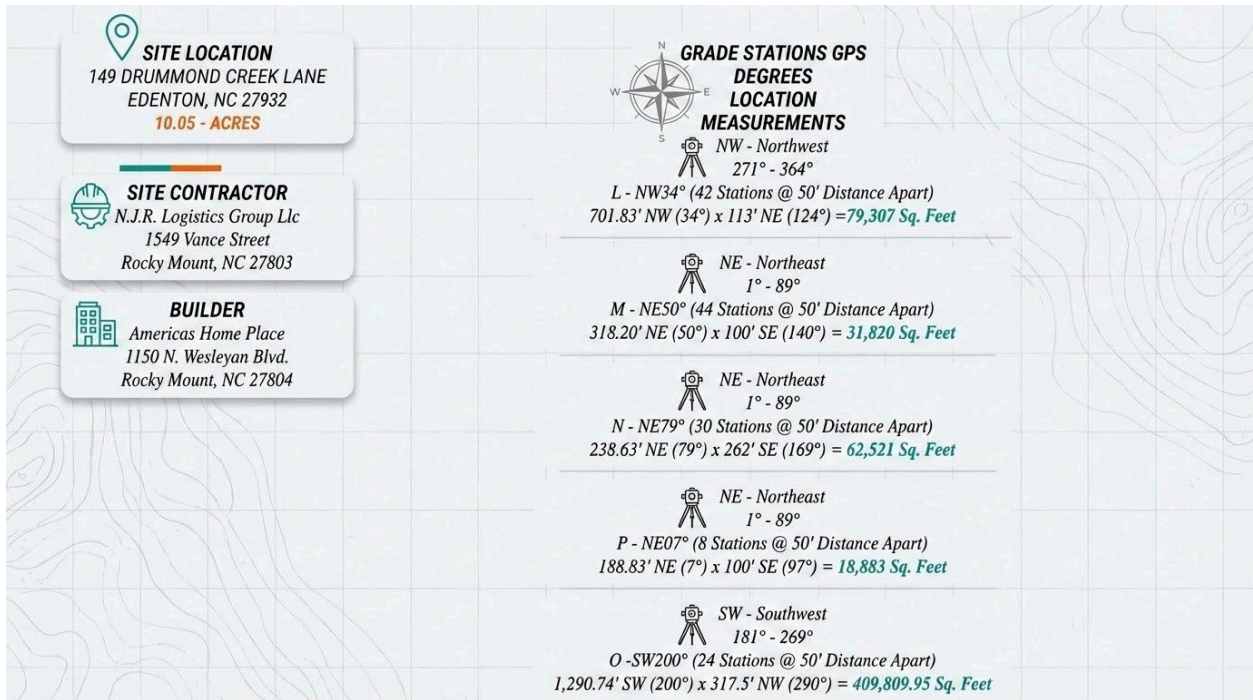


Naomi Jeanette Robinson Logistics Group

All-Terrain Hydraulic Crane Division

Lift a 350,000 lbs. (3) Level Home on Concrete Stilts

Page:10



THE PROBABILITY OF HOUSE PAD LOCATION FOR UTILITIES

The original plan was to have the house sit at North and South. On both sides will be a deck for sunrise and sunset off the Yeopim River to share with family and friends. Since the option of stilts that have changed to a deck. With the same elevation at all real estate locations on stilts. The best location for the house pad is illustrated below.

THE PROBABILITY OF TRUCKING SHOP AND BROKERING OFFICE PAD LOCATION FOR UTILITIES

Circumference - 408' Total (4) Sides



Naomi Jeanette Robinson Logistics Group

All-Terrain Hydraulic Crane Division

Lift a 350,000 lbs. (3) Level Home on Concrete Stilts

Page:11

Dimensions - 112'L x 100'W

The original plan was to have a separate entrance than the family house driveway. The entrance was designed for heavy haul operations and easy access to Drummond Creek Lane. The location is highly favorable at this location on the property

- Entrance Way Type: A Horse Shoe Lot for easy backing on the right side into the garage
- Amount of Bays:
 - Washing Bay (Truck and Trailer)
 - Detailing Bay (Truck and Trailer Chrome and Polishing)
 - Light Duty Service Bay (Fluids and Filters, Brakes, Tires, Hoses, Electrical)
 - Cargo Bay: For open commodity protection (Overhead Cranes on Tarping and Load Shift, Staging Jeep and Booster for Transport)
 - Office (Cafe, Conference Room, Server Room, Offices for Each Division of the Business)
- Flood Prevention: To have pad at 10' above sea level, with drainage
- Salt Water and Ice Melt Prevention: Concrete where landing gear from trailers make contact with earth, 100' from Garage will be heated driveway and sidewalks, The driveway will be clean stones to eliminate road salt application and ice removal

| GRADE STATION "O" LINE LOCATION | GRADE STATION "L" LINE LOCATION | GRADE STATION "M" LINE LOCATION | GRADE STATION "N" LINE LOCATION | GRADE STATION "P" LINE LOCATION |
|--|--|--|--|--|
| Grade O - 408' (Between Grade Stations) | Grade L - 80' (Between Grade Stations) | Grade M - 0' (Between Grade Stations) | Grade N - 216' (Between Grade Stations) | Grade P - 432' (Between Grade Stations) |
| ONW-400 | LNW-000 | MNE-000 | NSE-000 | PNE-000 |
| ONW -600 | LNW-100 | MNE-200 | NSE-140 | PNE-240 |
| Start to End - 408' to 520' | Start to End - 0' to 80' | Start to End - 0' to 112' | Start to End - 64' to 136' | Start to End - 0' to 232' |



Naomi Jeanette Robinson Logistics Group

All-Terrain Hydraulic Crane Division

Lift a 350,000 lbs. (3) Level Home on Concrete Stilts

Page:12

| HOUSE PROBILITY | GRADE STATIONS GPS | DEGREES | LOCATION | MEASUREMENTS |
|---------------------------------|---------------------------|----------------|--|---|
| Rear Left Side (West - 270°) | NW - Northwest | 271° - 364° | L - NW34° (42 Stations @ 50' Distance Apart) | 701.83' NW (34°) x 113' NE (124°) =79,307 Sq. Feet |
| Rear Right (East - 90°) | NE - Northeast | 1° - 89° | M - NE50° (14 Stations @ 50' Distance Apart) | 318.20' NE (50°) x 100' SE (140°) = 31,820 Sq. Feet |
| Rear Right (East - 90°) | NE - Northeast | 1° - 89° | N - NE79° (30 Stations @ 50' Distance Apart) | 238.63' NE (79°) x 262' SE (169°) = 62,521 Sq. Feet |
| Rear Right (East - 90°) | NE - Northeast | 1° - 89° | P - NE07° (8 Stations @ 50' Distance Apart) | 188.83' NE (7°) x 100' SE (97°) = 18,883 Sq. Feet |
| Front Right (East - 90°) | SW - Southwest | 181° - 269° | O -SW200° (182 Stations @ 50' Distance Apart) | 1,290.74' SW (200°) x 317.5' NW (290°) = 409,809.95 Sq. Feet |



Naomi Jeanette Robinson Logistics Group

All-Terrain Hydraulic Crane Division

Lift a 350,000 lbs. (3) Level Home on Concrete Stilts

Page:13

THE PROBABILITY OF CAR GARAGE LOCATION FOR UTILITIES

Circumference - 368' Total (4) Sides

Dimensions - 104'L x 64'W

The original plan was to have a 350' length x 30' Width driveway at the start of property that would have accommodated commercial and residential vehicles that would have broken off at 350' Length. Pending

- Amount of Entrance and Exits: 1
 - Tri Level Parking Lift
 - (5) Tri Level Parking Lifts
 - (5) Electric Car Level 3 Charging Station bottom of Tri Level Park
 - Washing Pit
 - Detailing Pit
 - Lube and Oil Area
 - Tire Changing Area
 - Dyno Testing Area
- Flood Prevention: To have pad at 10' above sea level , with drainage
 - Tri Level Parking Lift 9,000 lbs. & 7,000 lbs. Capacity for Flood Prevention
- Salt Water and Ice Melt Prevention: Concrete 100' around garage where vehicles park with heated pad
- Stones Driveway

| GRADE STATION "O" LINE LOCATION | GRADE STATION "L" LINE LOCATION | GRADE STATION "M" LINE LOCATION | GRADE STATION "N" LINE LOCATION | GRADE STATION "P" LINE LOCATION |
|--|--|--|--|--|
| Grade O - 408' | Grade L -144' | Grade M - 200' | Grade N - 212' | Grade P - 0' |
| (Between Grade Stations) | (Between Grade Stations) | (Between Grade Stations) | (Between Grade Stations) | (Between Grade Stations) |
| ONW-400 | LNW-000 | MNE-000 | NSE-000 | PNE-000 |
| ONW -600 | LNW-200 | MNE-200 | NSE-100 | PNE-000 |
| Start to End - 408' to 520' | Start to End - 72' to 104' | Start to End - 0' to 112' | Start to End - 0' to 64' | Start to End - 0' to 0' |



Naomi Jeanette Robinson Logistics Group

All-Terrain Hydraulic Crane Division

Lift a 350,000 lbs. (3) Level Home on Concrete Stilts

Page:14



Naomi Jeanette Robinson Logistics Group

All-Terrain Hydraulic Crane Division





Lift a 350,000 lbs. (3) Level Home on Concrete Stilts

Page:15

CHOOSING THE RIGHT EXCAVATOR

Excavators equipped with advanced surveying technology—such as GNSS/GPS, robotic total stations, and 3D machine control—function as part-operator, part-surveyor to achieve high-accuracy digging, grading, and trenching. These systems, like **Topcon MC-Max**, eliminate the need for manual grade checking by allowing operators to view designs, take, and verify topographic shots directly from the cab, increasing productivity and reducing rework.



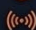
KEY APPLICATIONS OF SURVEY-ENABLED EXCAVATORS

-  **Precision Grading and Excavation:** Excavators use 3D models and GNSS to achieve, and hold, precise depths and slopes without requiring physical, manual survey stakes.
-  **Real-time Data and Monitoring:** Systems like Kordil EPS provide 3D, in-cab views of the design, allowing operators to monitor their progress in real-time.
-  **Autonomous Surveying:** The excavator bucket can act as a surveyor's rod to take topographical, "as-built" measurements, allowing the operator to verify their own work.
-  **Subsurface Utility Engineering:** Specialized, non-destructive vacuum excavators are used to safely expose underground utilities.



Topcon Positioning Systems +4

BENEFITS OF INTEGRATED SURVEYING

-  **Increased Safety:** Eliminates the need for grade checkers to work in close proximity to moving machinery or inside trenches.
-  **Efficiency:** Allows for instant, on-the-spot adjustments to design changes and significantly reduces the time required for manual surveying, often doubling productivity.
-  **Versatility:** Works in diverse environments, from open areas using GPS/GNSS to urban areas using Robotic Total Stations (RTS) when satellite access is obstructed.

Choosing The Right Excavator for the First and Last Machine on Job



Naomi Jeanette Robinson Logistics Group

All-Terrain Hydraulic Crane Division

Lift a 350,000 lbs. (3) Level Home on Concrete Stilts

Page:16

**Construction Bid Package Documents
Description Subjects**

SUBJECT(S)

- **The Biggest Equipment Possible for Production**
- **The least Amount of Equipment To Be Transport to and From Jobsite**
- **The Least Amount of Labor Work with Shovels and Rakes**
- **The Homeowner Controls Site Work (50' from House)**
-

**Construction Bid Package Documents Description
Topics**

TOPIC(S):

- **Caterpillar 395 Stand Boom is the Main Topic**
- **Caterpillar 395 Long Reach will be Best for Foundation Concerns and Bad for Loading trucks and Excavation**
- **The septic tank location for stilts house foundation and boardwalk excavation**
- **How to get commercial equipment to the location required for the job**
- **Limit the repairs to the NCDOT and Property Owner for damages to property**
- **All Material Supplies The Homeowner wants to be processed as a MVD Quote with family members using his information to go thru Lowe's Pro for outside sales agent**



Naomi Jeanette Robinson Logistics Group

All-Terrain Hydraulic Crane Division

Lift a 350,000 lbs. (3) Level Home on Concrete Stilts

Page:17

**Equipment Transport Once Purchased
or Rented to Jobsite**

My next thought was getting an excavator to box out the house location with a small excavator until the land turned to swampland and lift the small excavator out of the box. Then pile drive the box out and then use a Caterpillar 395 Long Reach and dig down to bed rock and then pour a foundation and then place sonic tube for the stilts



Naomi Jeanette Robinson Logistics Group

All-Terrain Hydraulic Crane Division

Lift a 350,000 lbs. (3) Level Home on Concrete Stilts

Page:18

Route Planning and Dispatching Equipment to Jobsite

**Construction Bid Package Documents
Description Subjects**

SUBJECT(S)

- **The Staging Area from Charlotte, NC**
- **How to get off U.S. Route-64 and Back Unto U.S. Route-64**
- **How to Load Trucks with the Limit amount of Time to increase the movement of dirt on jobsite**
- **Safe and Securement of Travel**

**Construction Bid Package Documents Description
Topics**

TOPIC(S):

- **How to Make a 90° Right Turn Onto Access Ramp to U.S. Route-64 at Dawn Hours**
- **How to clear the 8" Crown at Intersections to Make Right Turns without Bottom Out**
- **Safe Parking without Congestion at 6:45am Leaving**
- **Lodging at Quality Inn and Places to Eat for Escorts**
- **Crossing Under Traffic Electric Line**

Equipment Transport Once Purchased or Rented to Jobsite

My next thought was putting the house on stilts. However, I was designing the house to be a tool



Naomi Jeanette Robinson Logistics Group

All-Terrain Hydraulic Crane Division

Lift a 350,000 lbs. (3) Level Home on Concrete Stilts

Page:19

Construction Bid Package Documents

Description Subjects

SUBJECT(S)

- **The Staging Area from Charlotte, NC**
- **How to get off U.S. Route-64 and Back Unto U.S. Route-64**
- **How to Load Trucks with the Limit amount of Time to increase the movement of dirt on jobsite**
- **Safe and Securement of Travel**

Construction Bid Package Documents Description

Topics

TOPIC(S):

- **How to Make a 90° Right Turn Onto Access Ramp to U.S. Route-64 at Dawn Hours**
- **How to clear the 8" Crown at Intersections to Make Right Turns without Bottom Out**
- **Safe Parking without Congestion at 6:45am Leaving**
- **Lodging at Quality Inn and Places to Eat for Escorts**
- **Crossing Under Traffic Electric Line**

garage with a small caterpillar, john deere equipment. I then thought about welding and it is not wise to have your home over your job piece.



Naomi Jeanette Robinson Logistics Group

All-Terrain Hydraulic Crane Division

Lift a 350,000 lbs. (3) Level Home on Concrete Stilts

Page:20

Construction Bid Package Documents

Description Subjects

SUBJECT(S)

- **The Staging Area from Charlotte, NC**
- **How to get off U.S. Route-64 and Back Unto U.S. Route-64**
- **How to Load Trucks with the Limit amount of Time to increase the movement of dirt on jobsite**
- **Safe and Securement of Travel**

Construction Bid Package Documents Description

Topics

TOPIC(S):

- **How to Make a 90° Right Turn Onto Access Ramp to U.S. Route-64 at Dawn Hours**
- **How to clear the 8" Crown at Intersections to Make Right Turns without Bottom Out**
- **Safe Parking without Congestion at 6:45am Leaving**
- **Lodging at Quality Inn and Places to Eat for Escorts**
- **Crossing Under Traffic Electric Line**

My next thought was entertainment on stilts as well. I thought about elevators at the dock house where I would park my sports yacht. I thought about a boardwalk that is level with my house.



Naomi Jeanette Robinson Logistics Group

All-Terrain Hydraulic Crane Division

Lift a 350,000 lbs. (3) Level Home on Concrete Stilts

Page:21

Construction Bid Package Documents

Description Subjects

SUBJECT(S)

- **The Staging Area from Charlotte, NC**
- **How to get off U.S. Route-64 and Back Unto U.S. Route-64**
- **How to Load Trucks with the Limit amount of Time to increase the movement of dirt on jobsite**
- **Safe and Securement of Travel**

Construction Bid Package Documents Description

Topics

TOPIC(S):

- **How to Make a 90° Right Turn Onto Access Ramp to U.S. Route-64 at Dawn Hours**
- **How to clear the 8" Crown at Intersections to Make Right Turns without Bottom Out**
- **Safe Parking without Congestion at 6:45am Leaving**
- **Lodging at Quality Inn and Places to Eat for Escorts**
- **Crossing Under Traffic Electric Line**



Naomi Jeanette Robinson Logistics Group

All-Terrain Hydraulic Crane Division

Lift a 350,000 lbs. (3) Level Home on Concrete Stilts

Page:22

EXCAVATION STRATEGY & EQUIPMENT LOGISTICS





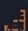



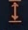

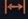
FILL DIRT TRANSPORT PLAN

Transporting fill dirt for enclosure basement. Calculated required amount and cost. Utilizing onsite resources within 100' is optimal. Digging down as a Pile Driver Box ensures stability against soil erosion. D6T Dozer with 36" Shoes for swamp.

CATERPILLAR 395 EXCAVATOR






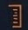
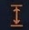

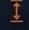
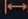
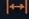
Google Maps: Gregory Poole Cat Dealership  [\(Link\)](#)

-  Weight: 249,700 lbs
-  Breaking Sections: 3
-  Transport Height: 14' 4"
-  Avg. Length/Section: 46.3'
-  Transport Width: 12' 9"
-  Min. U-Turn Space: 43,472 sq ft
-  Transport Length: 139'
-  U-Turn Distance/Section: 78'

LIEBHERR LTM 1750-9.1 CRANE



Google Maps: Reco Equipment, Inc. Dealership  [\(Link\)](#)

-  Weight: 120,000 lbs
-  Breaking Sections: 3
-  Transport Height: 15'
-  Avg. Length/Section: 46.3'
-  Transport Width: 10'
-  Min. U-Turn Space: 43,472 sq ft
-  Transport Length: 139'
-  U-Turn Distance/Section: 78'

My next thought was bowling lanes on stilts, I then looked at how I could make a boardwalk with an enclosure and tinted wall of windows.

My next thought was the height I wanted the house to be above sea level. I thought about ordering all material from lowes as a \$100,000.00+ sale. I then thought about the biggest timber I could get from Lowe's vendors and how much of the timber did I require to make one column, The depth of the stilts to the floor height. I didn't want to many joist nail strips on one column

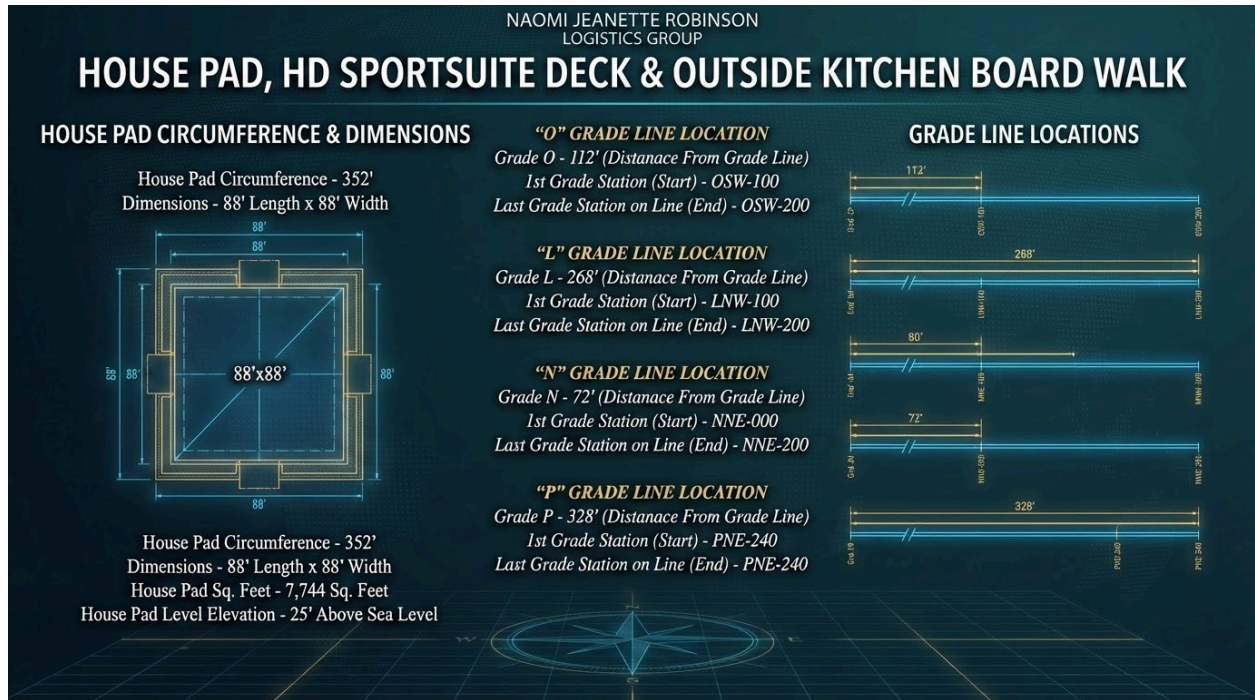


Naomi Jeanette Robinson Logistics Group

All-Terrain Hydraulic Crane Division

Lift a 350,000 lbs. (3) Level Home on Concrete Stilts

Page:23



HOUSE PAD, HD SPORTSUITE DECK & OUTSIDE KITCHEN BOARD WALK

The house will be built by America's Home Place in Rocky Mount, NC . The first idea was a Basement. The cost to submerge was expensive and we are exploring our options with a basement submerge to having a house on stilts with a level deck and boardwalk from our kitchen deck sliding door all the way you our wall of windows outdoors kitchen with privacy glass enclosure

As being a Lowe's Pro Sales Specialist of Store#547 (Rocky Mount, NC) I have established a relationship with local pro clients who are very crafty in property restoration. In which I supply material to. I wanted to give them work with a submerged basement. The \$2.5 million in fill dirt expenses alone was too pricey not including concrete and equipment.

The Raise Real Estate Must have privacy and safety for children safety and elderly. I like the enclosure to be a wall of windows without neighbors seeing a residence with privacy glass. Also I wanted a Telescope on the boardwalk as a Science Layout to see stars and planets.



Naomi Jeanette Robinson Logistics Group

All-Terrain Hydraulic Crane Division

Lift a 350,000 lbs. (3) Level Home on Concrete Stilts

Page:24

| | "O" GRADE | "L" GRADE | "M" GRADE | "N" GRADE | "P" GRADE LINE |
|--|--|--|--|--|--|
| House Pad Circumference - 352' | LINE LOCATION | LINE LOCATION | LINE LOCATION | LINE LOCATION | LINE LOCATION |
| Dimensions - 88' Length x 88' Width | Grade O - 112' (Distance From Grade Line) | Grade L - 268' (Distance From Grade Line) | Grade M - 80' (Distance From Grade Line) | Grade N - 72' (Distance From Grade Line) | Grade P - 328' (Distance From Grade Line) |
| House Pad Sq. Feet - 7,744 Sq. Feet | 1st Grade Station (Start) - OSW-100 | 1st Grade Station (Start) - LNW-100 | 1st Grade Station (Start) - MNE-100 | 1st Grade Station (Start) - NNE-000 | 1st Grade Station (Start) - PNE-240 |
| House Pad Level Elevation - 25' Above Sea Level | Last Grade Station on Line (End) - OSW-200 | Last Grade Station on Line (End) - LNW-200 | Last Grade Station on Line (End) - MNW-300 | Last Grade Station on Line (End) - NNE-200 | Last Grade Station on Line (End) - PNE-240 |



Naomi Jeanette Robinson Logistics Group

All-Terrain Hydraulic Crane Division

Lift a 350,000 lbs. (3) Level Home on Concrete Stilts

Page:25

THE PROBABILITY OF SPORTS SIMULATION AND HOBBYIST PAD

Circumference - 592' Total (4) Sides

Dimensions - 176'L x 100'W

The original plan was to have these items in the basement. We have more room on the stilts and it could be connected to the house deck at the same elevation. Our main concern is someone falling off the deck at 20' above ground. We were trying to have everything open. Due to insurance claims and housing permits we decided on a wall of windows with a dark tint and low light for limited view by passing boaters. The entire deck has to be able to support golf carts transportation. The Deck must have an access ramp to the landscaping for mail and deliveries with golf carts. An elevator is under the house pad at ground level. Golf Carts Travel in Center of all Amusements with Golf Cart Charging

➤ *Amount of Entrance and Exits: 3*

- *From House*
 - *No Golf Cart Assessible*
- *From Outdoors Kitchen and Boat Dock*
 - *No Golf Carts to Boat Dock*
 - *Elevator from Outside Kitchen to Boat Dock*
- *From Ground Level*
 - *10' Wide Ramp*
 - *Ramp Slope 5 to 1*
 - *Ramp Length: 100'*
- *HD Sports Suite Layout*
 - *Baseball Simulator*
 - *Football Simulator*
 - *Basketball Simulator*
 - *Racing Simulator*
 - *Soccer Simulator*
 - *Tennis Simulator*
 - *Golf Simulator*
 - *Flying Simulator*
 - *Sailing Simulator*



Naomi Jeanette Robinson Logistics Group

All-Terrain Hydraulic Crane Division

Lift a 350,000 lbs. (3) Level Home on Concrete Stilts

Page:26

- Full-Size Bowling Alley Layout
 - HD Train Layout All Around Bowling Alley
 - HO SlotCars Oval Track Around Bowling Alley
 - Sequence, Monopoly Custom Build (18'L x 6'W) Custom Board Game Tables for up to 12 Players each Game
 - Video Game Layout (12 Custom Nascar and Indy Car Race Chairs Simulation for 12 People Racing and 6 vs 6 in Sports Game)
 - Construction Layout: Tower Crane Area, Crawler Crane Area, All Terrain Crane Area, Excavation Area
 - RC Vehicles Drag Strip Next to Bowling Lanes
 - RC Helicopter Crane Area with Skyrise Buildings with HVAC and Cell Towers Area
 - (4) Bowling Lanes Official Dimensions with Names of Siblings on Each Lane
 - Wine and Cannabis Bar

Sports Pad Circumference

- Shape of Property: 592'
- Amount of Sides: 4
- Cubic Yards of Space: 16,296 cu. yards

| | “O” | “L” | “M” | “N” | “P” |
|--|------------|------------|------------|------------|------------|
| | GRADE LINE | GRADE LINE | GRADE LINE | GRADE LINE | GRADE LINE |
| | LOCATION | LOCATION | LOCATION | LOCATION | LOCATION |

| | | | | | |
|--|--|--|---|---|--|
| Dimensions - 176' Length x 100' Width | Grade O - 216' (Distance From Grade Line) | Grade L - 232' (Distance From Grade Line) | Grade M - 16' (Distance From Grade Line) | Grade N - 48' (Distance From Grade Line) | Grade P - 344' (Distance From Grade Line) |
|--|--|--|---|---|--|

| | | | | | |
|---|-------------------------------------|-------------------------------------|-------------------------------------|-------------------------------------|-------------------------------------|
| Sport Pad Sq. Feet - 17,600 Sq. Feet | 1st Grade Station (Start) - OSW-100 | 1st Grade Station (Start) - LNW-000 | 1st Grade Station (Start) - MNE-000 | 1st Grade Station (Start) - NNE-100 | 1st Grade Station (Start) - PNE-240 |
| The Sport Pad Amenities | | | | | |
| ➤ HD Sports Suite | | | | | |
| ➤ HD Train Layout | | | | | |
| ➤ HO Slotcars Layout | | | | | |
| ➤ Board Game Layout | | | | | |
| ➤ Video Game Layout | | | | | |
| ➤ RC Construction Layout | | | | | |



Naomi Jeanette Robinson Logistics Group

All-Terrain Hydraulic Crane Division

Lift a 350,000 lbs. (3) Level Home on Concrete Stilts

Page:27

- *RC Drag Strip Layout:*
- *RC Heavy Air Crane Layout*

| | | | | | |
|---|---------------------------|---------------------------|---------------------------|---------------------------|---------------------------|
| <i>Sports Pad Level Elevation - 25'</i> | <i>Last Grade Station</i> | <i>Last Grade Station</i> | <i>Last Grade Station</i> | <i>Last Grade Station</i> | <i>Last Grade Station</i> |
| <i>Above Sea Level</i> | <i>on Line (End) -</i> | <i>on Line (End) -</i> | <i>on Line (End) -</i> | <i>on Line (End) -</i> | <i>on Line (End) -</i> |
| | <i>OSW-300</i> | <i>LNW-300</i> | <i>MNW-300</i> | <i>NNE-000</i> | <i>PNE-240</i> |



Naomi Jeanette Robinson Logistics Group

All-Terrain Hydraulic Crane Division

Lift a 350,000 lbs. (3) Level Home on Concrete Stilts

Page:28

**THE PROBABILITY OF OUTDOORS KITCHEN AND OUTDOORS ELEVATOR
FOR BOATING DOCK PAD**

Circumference - 800' Total (4) Sides

Dimensions - 304'L x 96'W

The original plan was to have an outdoor kitchen on the deck behind the house. Due to the house on Stilts the outdoor kitchen will be over the Yeopim River that will be 25' above the river. All appliances are built-in. The Elevator will be in Center Island . The Outdoors Kitchen will have a Jacuzzi Hot Tub, All cabinets will be customed and install by Fred (Millwork Sales Specialist) at Lowe's Store#547

➤ *Type of Appliances and Accessories:*

- *Refrigerator*
- *Built-in Coffee Maker*
- *Built-in Blender for Mix Drinks*
- *Stove*
- *Double Wall Oven*
- *Griddle*
- *Grill*
- *Deep Fryer*
- *Built In Rice & Seafood Steamer*
- *Built-in Deep Fryer*
- *Built-in Deep Fryer*
- *Turkey Fryer*
- *Built-in Fire Pit and Fireplace*
- *Built-in Bar Stools*

➤ *Golf Carts Accessible*

- *In center of boardwalk with Landscaping Lights with parking*

**Boardwalk Distance
into Yeopim River -**

232' into River (Golf

LOCATION

LOCATION

LOCATION

LOCATION

LOCATION



Naomi Jeanette Robinson Logistics Group

All-Terrain Hydraulic Crane Division

Lift a 350,000 lbs. (3) Level Home on Concrete Stilts

Page:29

**Cart Accessible -
5,000 lbs capability)**

| | | | | | |
|---|---|---|---|---|---|
| | | <i>Grade L - 152'</i> | | | |
| <i>Outdoors Kitchen Boardwalk Pad Circumference - 800'</i> | <i>Grade O - 468' (Distance From Grade Line)</i> | <i>(Distance into Water From Grade Li ne)</i> | <i>Grade M - 160' (Distance into Water From Grade Line)</i> | <i>Grade N - 256' (Distance into Water From Grade Line)</i> | <i>Grade P - 552' (Distance into Water From Grade Line)</i> |
| <i>Dimensions - 304' Length x 96' Width</i> | <i>1st Grade Station (Start) - OSW-100</i> | <i>1st Grade Station (Start) - LNW-200</i> | <i>1st Grade Station (Start) - MNE-100</i> | <i>1st Grade Station (Start) - NNE-000</i> | <i>1st Grade Station (Start) - PNE-240</i> |
| <i>Outdoor Kitchen Pad Sq. Feet - 29,184 Sq. Feet</i> | <i>Last Grade Station on Line (End) - OSW-200</i> | <i>Last Grade Station on Line (End) - LNW-400</i> | <i>Last Grade Station on Line (End) - MNW-300</i> | <i>Last Grade Station on Line (End) - NNE-000</i> | <i>Last Grade Station on Line (End) - PNE-240</i> |
| <i>Outdoors Kitchen Pad Level Elevation - 25' Above Sea Level</i> | | | | | |

PAYMENT SCHEDULE

- Material Testing (\$1,200.00 & up)**
- Payment - 7 Days after completion**



Naomi Jeanette Robinson Logistics Group

All-Terrain Hydraulic Crane Division

Lift a 350,000 lbs. (3) Level Home on Concrete Stilts

Page:30

- North Carolina primarily uses comprehensive Soil & Site Evaluations rather than traditional "perc tests" to determine septic suitability. This evaluation analyzes soil texture, structure, depth to water table, and landscape position, usually requiring backhoe pits for inspection.
 - Annual Commercial Vehicles Permits in North Carolina **(\$20.00 Daily)**
 - Dimensions Covered: **Typically up to 12' wide, 13'6" high, and 105' long (including load).**
 - Weight Limits: **Often valid for legal weight, but can cover up to 90,000 lbs on specific, approved routes.**
 - Annual Overweight/Oversize (General): **For non-divisible commodities, up to 12' wide, 13'6" high, legal height.**
 - Annual Self-Propelled Equipment: **For specialized equipment (e.g., cranes) up to 10' wide and 13'6" high.**
 - Equipment Required
 - Heavy Duty Diesel Pickup: **Ford F350 Platinum+ with Tremor Package**
 - Gooseneck Flatbed Trailer: **EBYK Deck Over Gooseneck All Aluminum 30' x 102" Conestoga with 10' Interior Height**
 - Tare Weight - **7,000 lbs.**
 - Payload Capacity - **18,900 lbs.**
 - Cat 307 Mini Excavator - Operating Weight - **16,900 lbs.**



Naomi Jeanette Robinson Logistics Group

All-Terrain Hydraulic Crane Division

Lift a 350,000 lbs. (3) Level Home on Concrete Stilts

Page:31

CENTER STAKE LOCATION AND SETTING ESTIMATE

- Surveying (**\$1,000.00 and up daily**)
 - Gathering Intel
 - Preferred House Plot
 - Drainage - **2' Elevation from Yeopim River**
 - East to West (Low Tide Water leaves property)
 - Usage Type - **Commercial Accessible at any Given Time**
 - Weight Capacity - 300,000 lbs. Gross Weight Accessible
 - High Insurance Claims Reduction - **Natural Disasters**
 - Flood - **Hurricane and Tropical Storms**
 - Stilts Construction
 - High Winds - **Stilts Enclosure for Airborne Debris**
 - Stilts in Concrete for Debris Damages
 - Land Erosion - **Foundation Cracks**
 - Concrete Foundation Pad for Stilts
 - Gathering Topics
 - Equipment Required
 - Concrete Washing Station - **Pit under House Pad and Garage**
 - Concrete Pump Truck w/750' Reach Capacity Location - **Outside Box Excavation Equipment working Area**



Naomi Jeanette Robinson Logistics Group

All-Terrain Hydraulic Crane Division

Lift a 350,000 lbs. (3) Level Home on Concrete Stilts

Page:32

- Mobile Hydraulic Crane Setup Location - **Building Floor for Boardwalk over River with 6" x 6" x 16' Timber**
- Complete Level Pad - **Furniture and Entertainment**
- Car Garage - **Vehicles Park at 10' Above Sea Level on 3 Car Lifts with Bottom Empty**

HOUSE PAD CENTER STAKE (House Pad)

Lowe's Store #547 (Rocky Mount, NC) | Bosch Revolve2000 Self-Leveling Rotary Red Laser Kit | Item# 2675297

INSTRUMENT LOCATION:
Point A = Cul-De-Sac 50' Radius...

HEIGHT OF INSTRUMENT: (+)5.41

BACK SITE:
Center of Drummond Creek Lane

ELEVATION: 20' Distance (-0.75)
298° NW

GRADE STATION "N"

INSTRUMENT LOCATION: Point A = Cul-De-Sac 50' Radius (Drummond Creek Lane 20' Off Center off Road)
HEIGHT OF INSTRUMENT: (+)5.41

⊗ **BACK SITE:** Center of Drummond Creek Lane (+)4.75

⊗ **FORE SITE:** Grade Station "O" Edge of Drummond Creek Lane (+5.50)
↕ **ELEVATION:** 430' Distance (-1.20) 6° NE

GRADE STATION "N"

INSTRUMENT LOCATION: Point A = Cul-De-Sac 50' Radius (Drummond Creek Lane 20' Off Center off Road)
HEIGHT OF INSTRUMENT: (+)5.41

⊗ **BACK SITE:** Center of Drummond Creek Lane (+)4.75

⊗ **FORE SITE:** Grade Station "L" and Start of Grade Station "M" (+7.41)
↕ **ELEVATION:** 1,100' Distance (-2.00) 341° NW

GRADE STATION "M" & "O"

INSTRUMENT LOCATION: Point A = Cul-De-Sac 50' Radius (Drummond Creek Lane 20' Off Center off Road)
HEIGHT OF INSTRUMENT: (+)5.41

⊗ **BACK SITE:** Center of Drummond Creek Lane (+)4.75

⊗ **FORE SITE:** Grade Station "M" at Start on Grade Station "N" (+7.41)
↕ **ELEVATION:** 1,400' Distance (-2.00) 11° NE

**HOUSE PAD CENTER
STAKE (House Pad)**

Lowe's Store #547 (Rocky
Mount, NC)

Bosch Revolve2000
Self-Leveling Rotary Red Laser
Kit



Naomi Jeanette Robinson Logistics Group

All-Terrain Hydraulic Crane Division

Lift a 350,000 lbs. (3) Level Home on Concrete Stilts

Page:33

Item# 2675297

| INSTRUMENT LOCATION | HEIGHT OF INSTRUMENT | BACK SITE | FORE SITE | ELEVATION |
|--|-----------------------------|--|---|--|
| <i>Point A = Cul-De-Sac 50' Radius (Drummond Creek Lane 20' Off Center off Road)</i> | <i>(+)5.41</i> | <i>Center of Drummond Creek Lane (+)4.75</i> | <i>Grade Station "O" Edge of Drummond Creek Lane (+5.50)</i> | <i>20' Distance (-0.75) 298° NW</i> |
| <i>Point A = Cul-De-Sac 50' Radius (Drummond Creek Lane 20' Off Center off Road)</i> | <i>(+)5.41</i> | <i>Center of Drummond Creek Lane (+)4.75</i> | <i>Grade Station "P" and Start of Grade Station "L" (+6.61)</i> | <i>430' Distance (-1.20) 6° NE</i> |
| <i>Point A = Cul-De-Sac 50' Radius (Drummond Creek Lane 20' Off Center off Road)</i> | <i>(+)5.41</i> | <i>Center of Drummond Creek Lane (+)4.75</i> | <i>Grade Station "L" and Start of Grade Station "M" (+7.41)</i> | <i>1,100' Distance (-2.00) 341° NW</i> |
| <i>Point A = Cul-De-Sac 50' Radius (Drummond Creek Lane 20' Off Center off Road)</i> | <i>(+)5.41</i> | <i>Center of Drummond Creek Lane (+)4.75</i> | <i>Grade Station "M" at Start on Grade Station "N" (+7.41)</i> | <i>1,400' Distance (-2.00) 11° NE</i> |
| <i>Point A = Cul-De-Sac 50' Radius (Drummond Creek Lane 20' Off Center off Road)</i> | <i>(+)5.41</i> | <i>Center of Drummond Creek Lane (+)4.75</i> | <i>Grade Station "O" Corner at Water Edge (+7.41)</i> | <i>1,360' Distance (-2.00) 21° NE</i> |

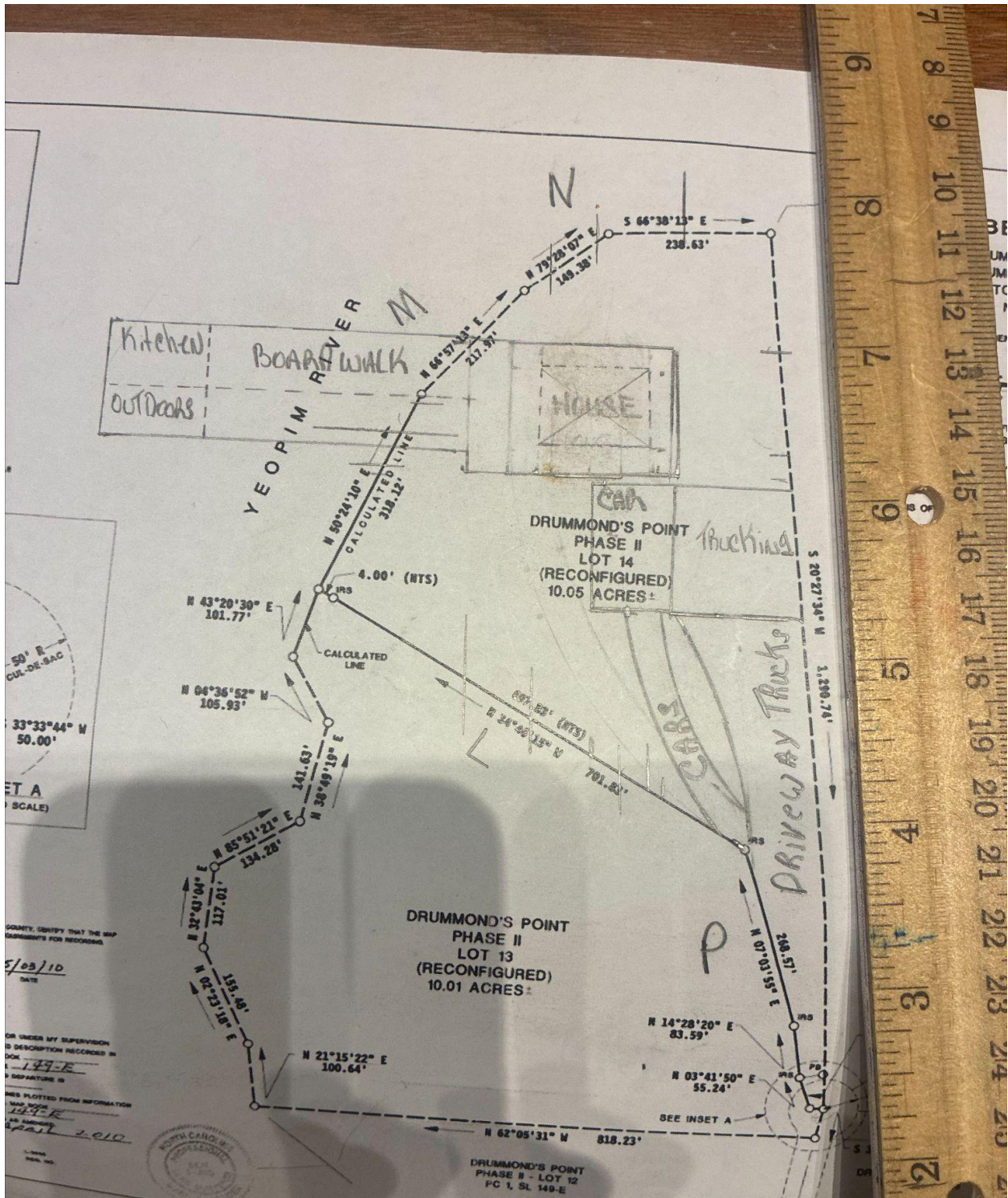


Naomi Jeanette Robinson Logistics Group

All-Terrain Hydraulic Crane Division

Lift a 350,000 lbs. (3) Level Home on Concrete Stilts

Page:34





Naomi Jeanette Robinson Logistics Group

All-Terrain Hydraulic Crane Division

Lift a 350,000 lbs. (3) Level Home on Concrete Stilts

Page:35

HAUL ROAD ESTIMATE

- Haul Road Into Property From Drummond Creek Lane
 - Location - **Away from Excavation Steps Opening for House Pit**
 - 10' off Drummond Creek Land the Entire Distance
 - Dimensions: **1,360' Length x 60' Width x 8" Road Stones**
 - Road Stones Required: **3,626 Tons**
 - Lowe's Bulk Stones Bags Required - **7,774 Bags**
 - Lowe's Charge Before MVD Quote - **\$563,615.00**
 - Lowe's MVD Quote Negotiated Price - **\$366,350.00**
 - 48' Flatbed Delivery Requirements (Kenworth W900B w/Extreme Tri Axle Step Deck[N.J.R. Trucking]) - **324 Loads**
 - Fulfillment Staging for Discharge Time for 324 Loads - **270 Hours**
 - Amount of Deliveries Daily (One Truck & Trailer) - **2 Daily**
 - Amount of Days Required for Stones Delivery - **162 Days (22.3 Tons Daily)**
 - When Ordering Road Stones for Daily Deliveries - **Once Property has been Surveyed - Stones Delivery Next Day**
 - 12 Cubic Yard Hooper and 30' Feeder - **Stock Piling Stones for Truck Loading**
 - Loading the Stones Bags into Hopper for Cat Track Loader
 - Caterpillar 307 Excavator Loading Bags into Hooper - **Staging Stones for Track Loader**
 - To bring Material for House Foundation
 - Haul Road Into Yeopim River
 - Dimensions: **235' Length x 12' Width**
 - Location of Haul Road - Center of Boardwalk to walk Excavator back and forth
 - For Marine Construction Contractor



Naomi Jeanette Robinson Logistics Group

All-Terrain Hydraulic Crane Division

Lift a 350,000 lbs. (3) Level Home on Concrete Stilts

Page:36



| | <i>STARTING LOCATING</i> | <i>ENDING LOCATION</i> | <i>MATERIAL REQUESTING</i> | <i>MATERIAL COST</i> |
|---|--|--|---|----------------------------------|
| <i>HAUL ROAD INTO PROPERTY</i> | <i>ONW-000 Grade Station 0' Feet Off</i> | <i>NSE-190 Grade Station 0' Feet Off</i> | <i>2.5" Clean Stones 8" Depth</i> | <i>\$270,776.00 Material</i> |
| | <i>PNW-000 Grade Station 0' Feet Off</i> | <i>NSW-250 Grade Station 0' Feet Off</i> | <i>1,360' Length x 60' Width 3,627 Tons 181 Loads</i> | <i>\$6,000.00 Dozer</i> |
| | | | <i>Dozer Requesting Caterpillar D6 XE Tier 4 Stage V 24" Shoe Width 7.5 Cubic Yard Blade 46 Hours to Complete</i> | <i>\$5,500.00 Dump Truck</i> |
| | | | <i>Once Haul Road is Finished The Stones will be used on Shore Line</i> | |
| <i>DREDGING YEOPIM RIVER TO MAKE HAUL ROAD FOR LONG REACH EXCAVATOR</i> | <i>ONW-000 Grade Station 0' Feet Off</i> | <i>NSE-190 Grade Station 0' Feet Off</i> | <i>696 Cubic Yards Dredge for Haul Road 12" Depth</i> | |
| | <i>PNW-000 Grade Station 0' Feet Off</i> | <i>NSW-250 Grade Station 0' Feet Off</i> | <i>235' Length x 80' Width 48- Hours to Complete</i> | |



Naomi Jeanette Robinson Logistics Group

All-Terrain Hydraulic Crane Division

Lift a 350,000 lbs. (3) Level Home on Concrete Stilts

Page:37

FRONT OF HOUSE PAD RIGHT

Grade Line "O"

Northwest Heading

"O" - Grade Station "ONW200" at 356° NW

600' Distance Corner of House Pad Right

Grade Line "O" Grade Stations (Total Distance from Start to Finished)

[Towards North]

29 Stations

FRONT OF HOUSE PAD LEFT

Grade Line "O"

Northwest Heading

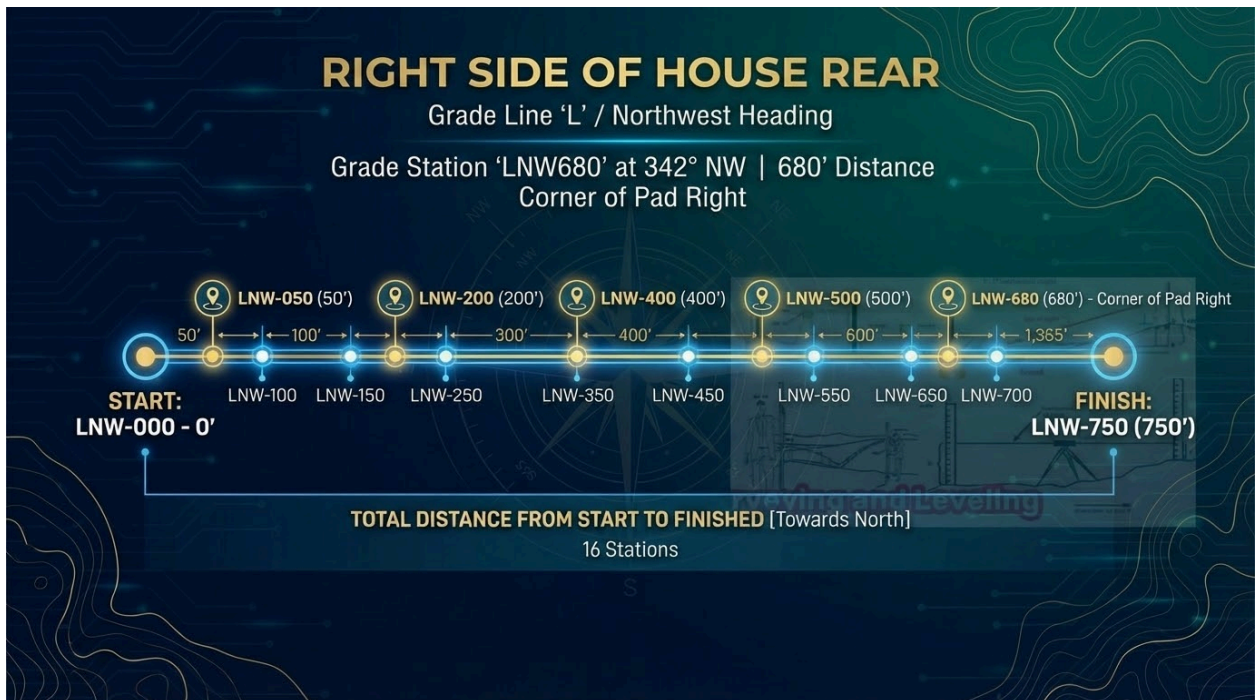
"O" - Grade Station "ONW400" at 359° NW

610' Distance Corner of House Pad Left

Grade Line "O" Grade Stations (Total Distance from Start to Finished)

[Towards North]

29 Stations



RIGHT SIDE OF HOUSE FRONT

RIGHT SIDE OF HOUSE REAR



Naomi Jeanette Robinson Logistics Group

All-Terrain Hydraulic Crane Division

Lift a 350,000 lbs. (3) Level Home on Concrete Stilts

Page:38

Grade Line "L"
 Northwest Heading
 "L" - Grade Station "LNW600" at 349° NW
 600' Distance Corner of House Pad Right

[Towards North]
 16 Stations

Grade Line "L"
 Northwest Heading
 "L" - Grade Station "LNW680" at 342° NW
 680' Distance Corner of Pad Right

[Towards North]
 16 Stations

REAR OF HOUSE PAD RIGHT

Grade Line "M"
 "M" - Grade Station "MNE400" at 166° SE
 200' Distance Corner of House Pad Rear Right

Grade Line "M" Grade Stations (Total Distance
 from Start to Finished

[Towards South]
 16 Stations

REAR OF HOUSE PAD LEFT

Grade Line "M"
 "M" - Grade Station "MNE480" at 180° S
 240' Distance Corner of Pad Rear Left

Grade Line "M" Grade Stations (Total Distance from Start to
 Finished

[Towards South]
 16 Stations

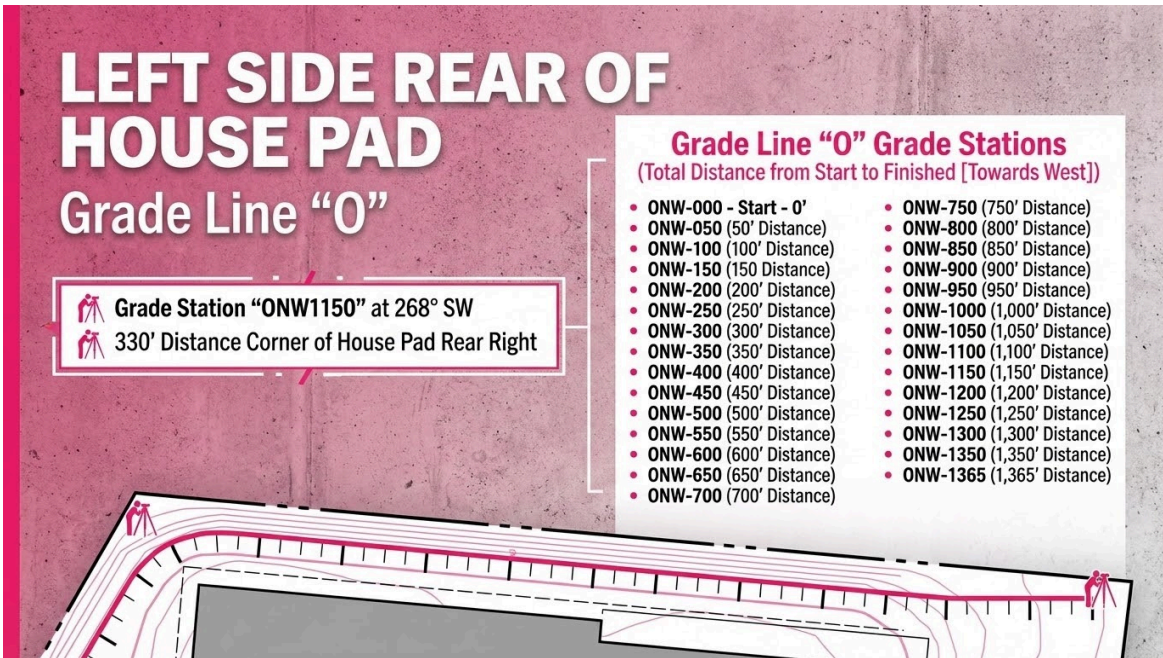


Naomi Jeanette Robinson Logistics Group

All-Terrain Hydraulic Crane Division

Lift a 350,000 lbs. (3) Level Home on Concrete Stilts

Page:39



LEFT SIDE REAR OF HOUSE PAD

LEFT SIDE FRONT HOUSE PAD

Grade Line "O"

"O" - Grade Station "ONW1150" at 268° SW
330' Distance Corner of House Pad Rear Right

Grade Line "O" Grade Stations (Total Distance from Start to Finished

[Towards West]
29 Stations

Grade Line "O"

"O" - Grade Station "ONW1190" at 270° SW
300' Distance Corner of Pad Right

Grade Line "O" Grade Stations (Total Distance from Start to Finished

[Towards West]
29 Stations

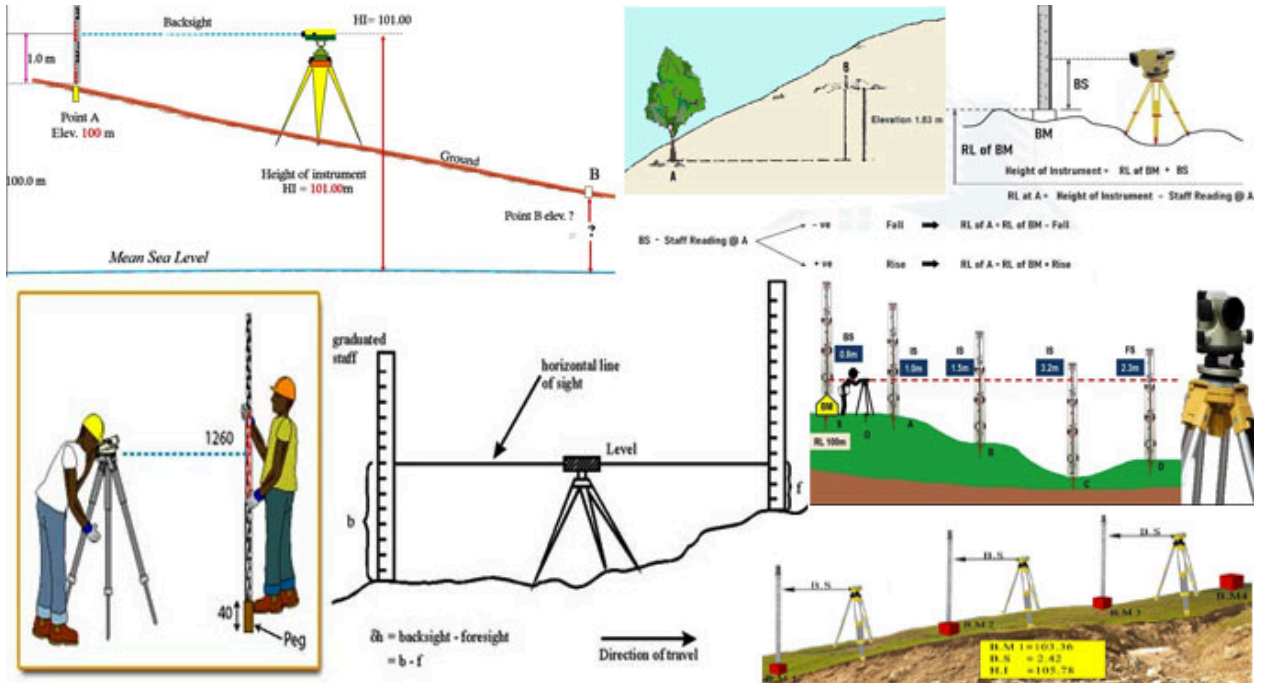


Naomi Jeanette Robinson Logistics Group

All-Terrain Hydraulic Crane Division

Lift a 350,000 lbs. (3) Level Home on Concrete Stilts

Page:40



| INSTRUMENT LOCATION | HEIGHT OF INSTRUMENT | BACK SITE | FORE SITE | SLOPE ELEVATION |
|---|-----------------------------|--|--|--|
| Point A Center House Pad for Concrete Floor | (+)5.41 | Cul-De-Sac 50' Radius (Drummond Creek Lane 20' Off Center off Road) (+)9.75 Finished Grade | Grade Station "M" (MNE-120) [120' up Line M] Yeopim River (+)11.75 | 1,330' Distance 200 to 1 Slope to Drummond Creek Lane Entrance to Center Stake 50 to 1 Slope to Yeopim River |
| Point A Center House Pad for Concrete | (+)5.41 | Grade Station "O" (ONW-1365) | Grade Station "L" (LNW-480) | 840' Distance |



Naomi Jeanette Robinson Logistics Group

All-Terrain Hydraulic Crane Division

Lift a 350,000 lbs. (3) Level Home on Concrete Stilts

Page:41

| | | | | |
|---|-----------------------|--|--|---|
| <p><i>Floor</i></p> | | <p><i>at Yeopim River (+11.75)</i></p> | <p><i>(+10.75)</i></p> | <p><i>106 to 1 Slope to Grade Station ONW-1365</i></p> <p><i>66 to 1 Slope to Grade Station LNW-480</i></p> |
| <p><i>Point A Center House Pad for Concrete Floor</i></p> | <p><i>(+)5.41</i></p> | <p><i>Grade Station "O" (ONW-950) (+10.41)</i></p> | <p><i>Grade Station "M" (MNW-175) (+11.41)</i></p> | <p><i>640' Distance</i></p> <p><i>62 to 1 Slope to Grade Station ONW-950</i></p> <p><i>68 to 1 Slope to Grade Station MNW-175</i></p> |



Naomi Jeanette Robinson Logistics Group

All-Terrain Hydraulic Crane Division

Lift a 350,000 lbs. (3) Level Home on Concrete Stilts

Page:42