



(Welding & Fabrication)

TRAILER TYPE OF FABRICATION	TYPE OF METAL USED FOR FABRICATION	PURPOSE FOR FABRICATION
<p><i>2025 Reitnouer Big Bubba Tri-Axle 48' Aluminum Flatbed</i></p> <ul style="list-style-type: none"> <i>• Business Name in Lights at rear</i> <i>• Oversized Load Enclosure w/Lights in Rear</i> 	<i>Aluminum</i>	<i>Oversized Enclosed Banner with Lights and Business Name Enclosure with Lights in Rear</i>
<p><i>2025 Reitnouer Big Bubba Drop Tri-Axle 53' Aluminum Drop Deck</i></p> <ul style="list-style-type: none"> <i>• Business Name in Lights at rear</i> <i>• Oversized Load Enclosure w/Lights in Rear</i> 	<i>Aluminum</i>	<i>Oversized Enclosed Banner with Lights and Business Name Enclosure with Lights in Rear</i>
<p><i>2025 Fontaine Xcalibur 48' Extendable Flatbed</i></p> <ul style="list-style-type: none"> <i>• Business Name in Lights at rear</i> <i>• Oversized Load Enclosure w/Lights in Rear</i> 	<i>Aluminum</i>	<i>Oversized Enclosed Banner with Lights and Business Name Enclosure with Lights in Rear</i>
<p><i>2025 Fontaine Xcalibur 53' Extendable Flatbed</i></p> <ul style="list-style-type: none"> <i>• Business Name in Lights at rear</i> <i>• Oversized Load Enclosure w/Lights in Rear</i> 	<i>Aluminum</i>	<i>Oversized Enclosed Banner with Lights and Business Name Enclosure with Lights in Rear</i>
<p><i>2025 Fontaine Magnitude 65-Ton 2+3+2</i></p> <ul style="list-style-type: none"> <i>• Business Name in Lights at rear</i> <i>• Oversized Load Enclosure w/Lights in Rear</i> 	<i>Aluminum</i>	<i>Oversized Enclosed Banner with Lights and Business Name Enclosure with Lights in Rear</i>
<p><i>2025 Fontaine Magnitude 80-Ton 3+3+3</i></p> <ul style="list-style-type: none"> <i>• Business Name in Lights at rear</i> <i>• Oversized Load Enclosure w/Lights in Rear</i> 	<i>Aluminum</i>	<i>Oversized Enclosed Banner with Lights and Business Name Enclosure with Lights in Rear</i>

2025 Trail King Expanding Perimeter Frame Trailer

- *Business Name in Lights at rear*
- *Oversized Load Enclosure w/Lights in Rear*

Aluminum

*Oversized Enclosed
Banner with Lights and
Business Name
Enclosure with Lights in
Rear*



***2025 FORD F550 LARIAT CREW CAB 4x4 ON A 203" WHEELBASE
w/11' STELLAR 8630 CRANE MECHANIC WELDER BODY***

(Welding & Fabrication Truck)

PAINT

a) *Carbonized Grey Metallic*

POWERTRAIN

a) *6.7L 4 Valve OHV Power Stroke V8 Turbo Diesel B20 Engine*

b) *4x4*

c) *Ten Speed 10R140 w/Automatic Transmission with Selectable Drive Modes*

d) *4.30 Limited Slip Axle*

e) *19,500 lbs. Gross Vehicle Rating*

PACKAGES

- a) *Trailer Tow Package – High Capacity*
- b) *Payload Plus Upgrade Package 1*
- c) *Extra Heavy-Duty Front-End Suspension (7,500 lbs.)*
- d) *360-Degree Camera System*
- e) *120 Volt – 400-Watt Outlet*

EXTERIOR

- a) *19.5" x 6" Forged Polished Aluminum Wheels with Bright Hub Cover / Center Ornament*
- b) *225/70R x 19.5G BSW A/P Tires*
- c) *Power-Folding w/Autofold, PowerScope Telescoping Power Glass Trailer Tow Mirrors with Heat, Turn Signals, High-Intensity LED Security Approach Lamps, Utility Lighting System*
- d) *6-Ton Hydraulic Jack*
- e) *Rear Window Defrost*
- f) *Remote Start*
- g) *Transmission Power Take-Off Provision*
- h) *Dual Battery*
- i) *Rear View Camera and Prep Kit*
- j) *Daytime Running Lamps*
- k) *Roof Marker / Clearance LED Lamps*
- l) *Dual 40-26.5-Gallons Fuel Tanks*
- m) *Power Sliding Rear Glass*
- n) *Spare Tire*
- o) *SecuriCode Wireless Keyless Entry. Driver's Side*
- p) *Exterior Backup Alarm*
- q) *Engine Block Heater*
- r) *Front Wheel Well Liner*
- s) *Side Window Deflector Kit – Smoke*
- t) *Skid Plates – Transfer Case*
- u) *Center High-Mount Stop Lamp*

INTERIOR

- a) *Black Onyx*
- b) *Front Active Seating Material 40/Console/40; 8-Way Power and Driver Passenger Seats*
- c) *Operator Commanded Regeneration*
- d) *Air Conditioning – Dual Zone Electronic Automatic Temperature Control*
- e) *Trailer Brake Controller*
- f) *Cruise Control*
- g) *SecuriLock Passive Anti-Theft System*
- h) *Vehicle Integration System 2.0*
- i) *Overhead Console w/5 Upfitter Switches*
- j) *Pro Power Onboard – 2kW*
- k) *Vehicle Safe by Console Vault*
- l) *Rapid-Heat Supplemental Cab Heater*
- m) *All Weather Floor Mats*
- n) *Roadside Assistance Kit – With Ford Logo*
- o) *B&O Sound System by Bang & Olufsen w/HD Radio*
- p) *12" LCD Capacitive Touchscreen with Swipe Capability*
- q) *SiriusXM with 360L*
- r) *FordPass Connect 5G Wi-Fi Modem*
- s) *SYNC 4 Enhanced Voice Recognition*

CRANE BODY

- a) *11' Mechanics Body w/Stellar 8630 Crane*
- b) *Vanair RC40 Compressor*
- c) *C-Tech Tool & Bolt Cabinets*
- d) *LED Work Lights*
- e) *LED Cabinet Lights*
- f) *Master Locking System*
- g) *21" Work Bench Step Bumper*
- h) *Wilton Vice*
- i) *Air Hose Reel*
- j) *Flush Floor Tie Downs*
- k) *Spray-in Bed Liner*
- l) *Receiver Hitch*
- m) *Trailer Plug*

CRANE SPECIFICATIONS

- a) *Crane Rating – 53,100 Ft-lb (7.3tm)*
- b) *Boom Length – 13' (3.96m) From CL of Crane*
- c) *Boom Extension 1st Stage and 2nd Stage – Hydraulic 100" (254 cm)*
- d) *Maximum Horizontal Reach – 29;8" (9.04m) From CL of Crane*
- e) *Maximum Vertical Lift – 31'6" (9.60m) From Crane Base*
- f) *Lifting Capacity*
 - a. *8,600 lbs. @ 6'2" (3,900 kg @ 1.88 m)*
 - b. *1,820 lbs. @ 29'2" (826 kg @ 8.89 m)*
- g) *Boom Elevation - 10° to + 80°*
- h) *Stowed Height (Crane Only) – 38.6" 98 cm*

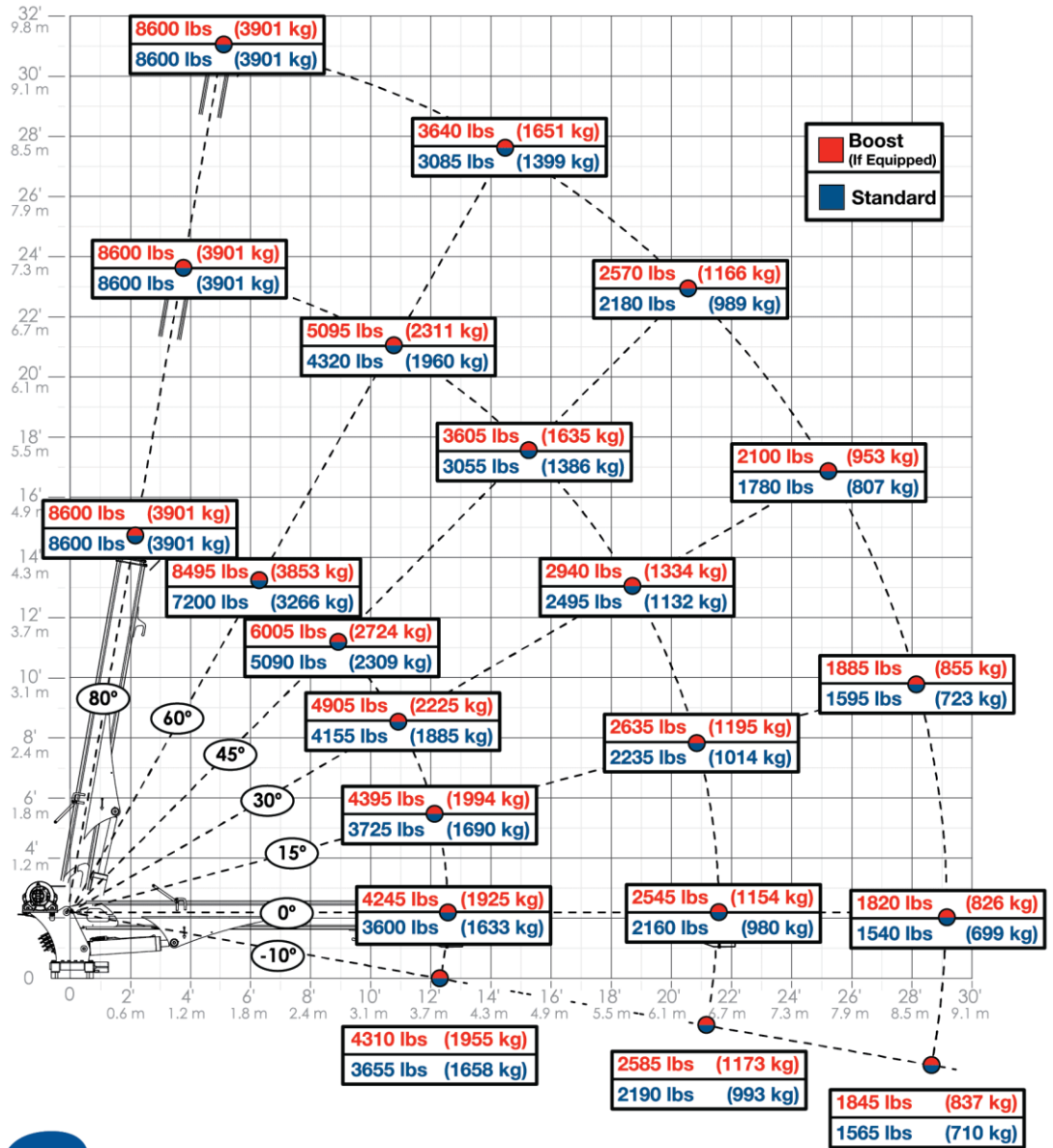
- i) Mounting Space Required – 20" x 21" (50.8 x 53.3 cm)*
- j) Approximate Crane Weight – 1,735 lbs. (787 kg)*
- k) Winch*
 - a. Rope Diameter – 3/8" (0.95 cm) 6 x 31 IWRV-DGXIP x 120" (30.48 m) 60 ft/min (18.29 m/min)*
 - b. Line Pull Speed – 60 ft/min (18.29 m/min)*
 - c. Max Single Part Line – 4,300 lbs. (1,950 kg)*
 - d. Max. Double Part Line – 8,600 lbs. (3,900 kg)*
- l) Rotation - 400° Power (Worm Gear)*
- m) Power Supply Required [PTO & Pump 8 gpm @ 3,000 psi (30.3 lpm @ 207 Bar)*
- n) Min. Recommend (GVWR) – 19,000 lbs.*
 - a. Crane Rating in Boost Mode. Normal Crane Rating is 45,000 ft-lbs. (6.2 TM)*

**CRANE LIFTING
CHART**

IMPORTANT

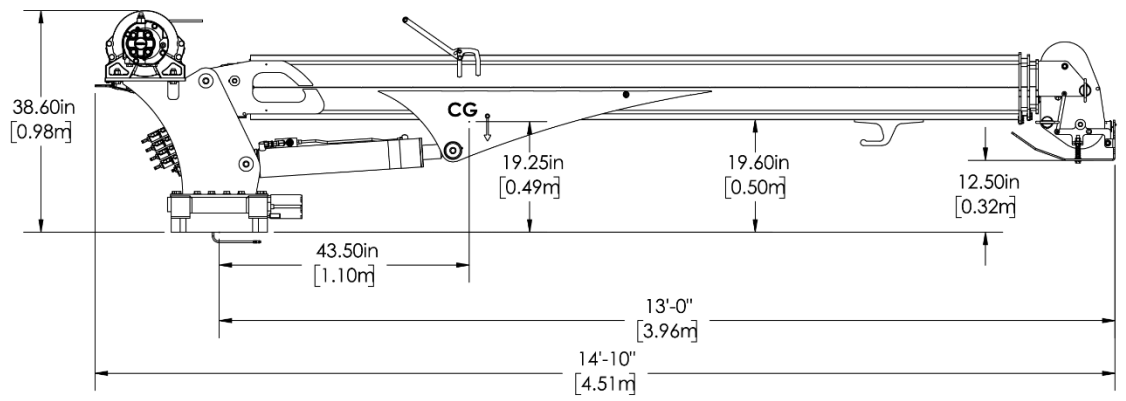
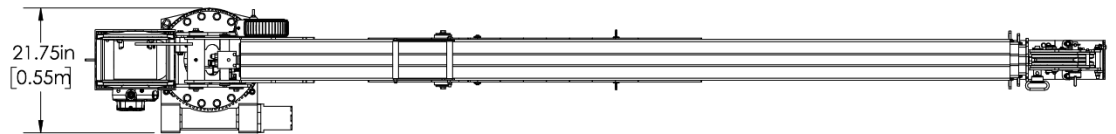
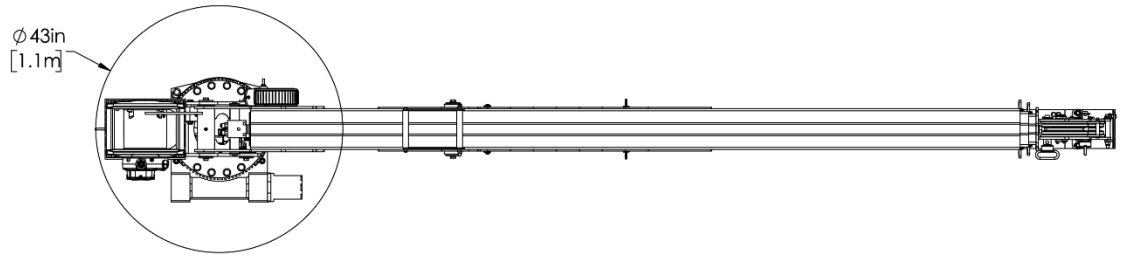
Weight of load handling devices are part of the load lifted and must be deducted from the capacity.

Maximum single-part line capacity is 4300 lbs (1950 kg). For greater loads, use two-part line.

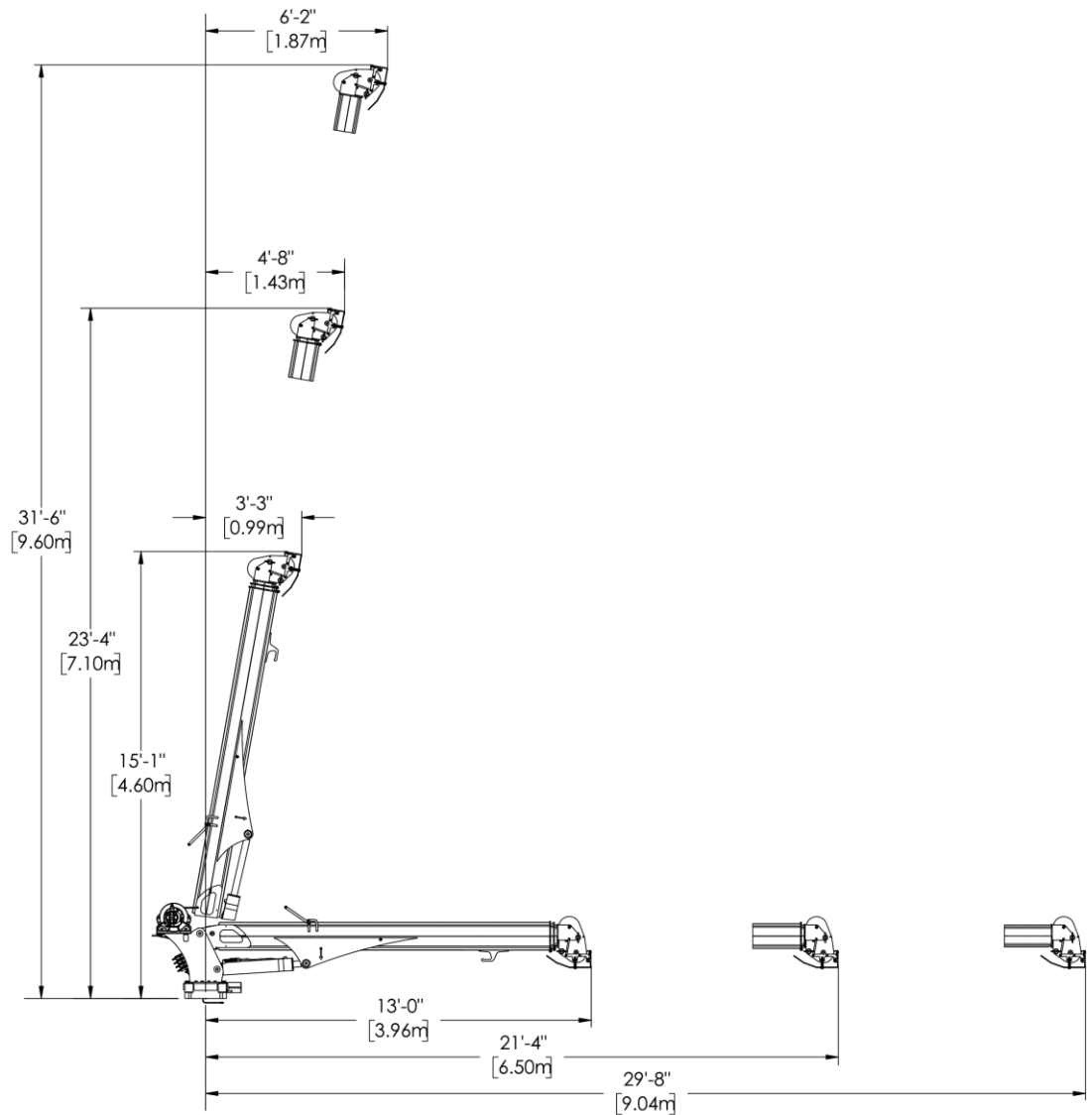


STELLAR[®] 8630

**CRANE
DIMENSIONS**



**CRANE
GEOMETRIC
DIMENSIONS**



**STELLAR CRANE
INSPECTION LOG**

[59661 Crane Inspection Log 202412](#)

PLASMA CUTTER

Spectrum 875 Plasma Cutter w/XT60 Torch With 50' Cable ([Spectrum 875-875 Auto-Line](#))

**PLASMA CUTTER
SPECIFICATIONS**

- a) Processes – Plasma (PAC)
- b) Title – Spectrum 875 Plasma Cutter With XT60 Torch w/50' Cable
- c) Industries Interests
 - a. Shipbuilding
 - b. Racing

- c. Manufacturing
- d. Heavy Equipment
- e. Construction & Fabrication
- d) Rated Output at 104 Degrees Fahrenheit – 208 V: A at 140 VDC, 40% Duty Cycle, 230 VDC: 60 A at 140 VDC, 50% Duty Cycle
- e) Recommended Generator Power – 11,000
- f) Input Hz – 50/60 Hz
- g) Input Amperage – 42 A
- h) Metal Type
 - a. Mild Steel
 - b. Stainless Steel
 - c. Aluminum
- i) Travel Speeds
 - a. Stainless Steel Travel Speed – IPM (15 IPM)
 - b. Aluminum Travel Speed – IPM (15 IPM)
 - c. Mild Steel Travel Speed – IPM (15 IPM)
- j) Applications – Welding Projects
- k) Net Width – 8.75”
- l) Net Height – 13.5”
- m) Net Length – 18.75”
- n) Net Weight – 51 lbs.
- o) Warranty – 3 Years
- p) [Certification Report Template](#)

**WELDER
SPECIFICATIONS**

Miller Bobcat 265 Air Pak w/Battery Charge / Crank Assist ([Bobcat 265 Air Pak](#))

- a) Processes
 - a. Air Carbon Arc Cutting and Gouging (CAC-A)
 - b. Flux Cored (FCAW)
 - c. MIG (GMAW)
 - d. Stick (SMAW)
 - e. TIG DC (GTAW-DC)
- b) Industries Interest
 - a. Construction and Fabrication
 - b. Heavy Equipment
- c) Amperage – 20 A – 265 A
- d) Weldable Metals
 - a. Aluminum
 - b. Stainless Steel
 - c. Steel
- e) Rated Carbon Diameter – 3/16” (4.8 mm)
- f) Current Type – DC
- g) Max Open Circuit Voltage – 107 VDC
- h) Portability – Lift Eye (Standard)
- i) Engine Brand – Kohler
- j) Engine Idle Speed – 2400 rpm

- k) Engine Weld Speed – 3,600 rpm*
- l) Fuel Tank Size – 11 Gallons*
- m) Horsepower – 27 hp*
- n) Weld Output – CC CV*
- o) Rated Output – CC DC Stick / TIG 244 A at 29.8 V, 100% Duty Cycle, CV/DC MIG / FCAW 260 A at 27 V, 100% Duty Cycle*
- p) Single Phase Auxiliary Continuous Power – 9500 W*
- q) Single Phase Auxiliary Peak Power – 11,000 W*
- r) Sound Rating – 69.5 dB @ 150 Amps and 75.3 dB @ Max. Weld*
- s) Compressor Brand – Rotary – Screw Compressor*
- t) Compressor Free Air Delivery – 30 cfm (0.85 m³ / min.) at 3,600 rpm / 28 cfm (0.70 m³ / min.) at 3,000 rpm*
- u) Compressor Working Pressure 80 – 160 psi*
- v) Compressor Duty Cycle – 100%*
- w) Compressor Automatic Shutdown – High Pressure (160 psi)*
- x) Applications:*
 - a. Aluminum Welding*
 - b. Fabrication*
 - c. Field Welding*
 - d. Industrial Welding*
- y) Battery Charge 10-150 A*
- z) Crank Assist – 300 A, 12/24 V*
- aa) Warranty – 3 Years*

ALUMINUM FLATBED FABRICATION



ALUMINUM STEP DECK FABRICATION



STEEL EXTENDABLE STEP DECK FABRICATION



STEEL LOWBOY FABRICATION



EXPANDING PERIMETER FRAME FABRICATION



**GALVANIZED STEEL SQUARE
SIGNPOST**

- *Square Shape Provides Torsional Stability*
- *7/16" Holes on 1" Centers Full Length of Post*
- *2" Width*

QUANTITY AND PURPOSE

Quantity - 5

- a) Floor of trailer - Post Welded to Trailer 8' Length*
- b) Right side of trailer welded to floor post - 4' Length.*
- c) Left Side of Trailer to floor Post - 4' Length*
- d) Post on Top of Right and Left Post - 8.5' Length*
- e) Post 6" Down from Top Post - 8.5' Length*

Purpose.

Post will be used to hold 8.5' Enclosed Box with LED Lights Inside with "OVERSIZED" Cut Out Letters



***GALVANIZED STEEL SQUARE
SIGNPOST ANCHORS***

- *Square Shape Provides Torsional Stability*
- *7/16" Holes on 1" Centers Full Length of Post*
- *1-3/4" x 1-3/4" Compatible Signpost Size, Steel,*
- *4 Anchor Holes*
- *6" Length*

QUANTITY AND PURPOSE

Quantity - 12

- a) *(4) Welded Back-to-Back on Anchor Plates for Main Post Welded on Trailer for Extending the Width of the Frame Shipment*
 - a. *To be Removed When Not in Use*
- b) *(4) Welded Back-to-Back to Connect to the "Oversize Sign When Required*
 - a. *To be Removed When Not in Use*
- c) *(4) Welded in a "T" Designed to Connect the "N.J.R. "Enclosed Box" Back to Secure the Sign*
 - a. *To be Removed when Not in Use*

Purpose.

To reduce the weight and to be installed and removed when not in use without welding or plasma cutting



**GALVANIZED STEEL SQUARE
SIGNPOST**

- *Square Shape Provides Torsional Stability*
- *7/16" Holes on 1" Centers Full Length of Post*
- *1-1/2" Width*

QUANTITY AND PURPOSE

Quantity - 4

- (1) Used on Bottom Right Side to Extend or Extract the Width of the Frame from 8.5' Width to 12' Width - 6' Length*
- (1) Used on Bottom Left Side to Extend or Extract the Width of the Frame from 8.5' Width to 12' Width - 6' Length*
- (1) Used on Top Right Side to Extend or Extract the Width of the Frame from 8.5' Width to 12' Width - 1.75' Length*
- (1) Used on Top Left Side to Extend or Extract the Width of the Frame from 8.5' Width to 12' Width - 1.75' Length*

Purpose.

Used to extend the width of the structure without welding or plasm cutting



**1/8" ALUMINUM PLATE 4' x 10'
SMOOTH ON BOTH SIDES
(3003)**

Aluminum Alloy with Magnesium Added to Make It Much Stronger Than 3003 Series Aluminum. This Grade Has Great Corrosion Resistance and Has the Best Welding Characteristics of All the Aluminum. Uses Include Truck and Trailer Components, Aircraft Components, Boat Hulls, Ladders, Railings, Toolboxes, Kitchen Equipment, Decorative Trim, Sign Blanks, And Any Other Applications That Would Require More Strength Than 3003 Series Aluminum 5052-H32

QUANTITY AND PURPOSE

Quantity - 1 Sheet

- a) **1st Enclosed Aluminum Box - 8.5' L x 10" W x 1/8" D**
 - o Back of Enclosed Box
- b) **1st Enclosed Aluminum Box - 8.5' L x 6" W x 1/8" D**
 - o Top of Enclosed Box
- c) **1st Enclosed Aluminum Box - 8.5' L x 10" W x 1/8" D**
 - o Front of Enclosed Box
- d) **1st Enclosed Aluminum Box - 8.5' L x 6" W x 1/8" D**
 - o Bottom of Enclosed Box
- e) **1st Enclosed Aluminum Box - 10" L x 6" W x 1/8" D**
 - o Right Side of Enclosed Box
- f) **1st Enclosed Aluminum Box - 10" L x 6" W x 1/8" D**
 - o Left Side of Enclosed Box

Purpose.

The 1st Enclosed Aluminum Box will be for the "Oversized" Sign

The Enclosed Box will be welded to Galvanized Signpost at the top of post. Level at Top of Signpost



**1/8" ALUMINUM PLATE 4' x 10'
SMOOTH ON BOTH SIDES
(3003)**

Aluminum Alloy with Magnesium Added to Make It Much Stronger Than 3003 Series Aluminum. This Grade Has Great Corrosion Resistance and Has the Best Welding Characteristics of All the Aluminum. Uses Include Truck and Trailer Components, Aircraft Components, Boat Hulls, Ladders, Railings, Toolboxes, Kitchen Equipment, Decorative Trim, Sign Blanks, And Any Other Applications That Would Require More Strength Than 3003 Series Aluminum 5052-H32

QUANTITY AND PURPOSE

Quantity - 1 Sheet

- a) **2nd Enclosed Aluminum Box - 6' L x 10" W x 1/8" D**
 - Back of Enclosed Box
- b) **2nd Enclosed Aluminum Box - 6' L x 6" W x 1/8" D**
 - Top of Enclosed Box
- c) **2nd Enclosed Aluminum Box - 6' L x 10" W x 1/8" D**
 - Front of Enclosed Box
- d) **2nd Enclosed Aluminum Box - 6' L x 6" W x 1/8" D**
 - Bottom of Enclosed Box
- e) **2nd Enclosed Aluminum Box - 10" L x 6" W x 1/8" D**
 - Right Side of Enclosed Box
- f) **2nd Enclosed Aluminum Box - 10" L x 6" W x 1/8" D**
 - Left Side of Enclosed Box

Purpose.

The 2nd Enclosed Aluminum Box will be for the "N.J.R." Sign

The Enclosed Box will be welded to Galvanized Signpost at the Foundation of Fabrication Frame



RUST-OLEUM PAINTER'S TOUCH 2, 12 oz. GLOSS SUN YELLOW GENERAL PURPOSE SPRAY PAINT

Highlights

- Interior / Exterior Use on Wood, Metal, Plastic and More
- Designed to Provide Long-lasting Protection and Durability
- Covers Up to 12 Square Feet
- Glossy Finished provides a Fresh Shine to Surfaces
- Comfort Spray Tip with Wider Finger Pad Reduces Finger Fatigue and Offers 360 Any Angle Spray Technology
- Dried to Touch in 20 Minutes
- Oil Based Formula Contains Double Cover Technology: Delivers Twice the Coverage Compared to Other Rust-Oleum General Purpose Paints
- Paint and Primer in One
- Clean up With Mineral Spirits

QUANTITY AND PURPOSE

Quantity - 4 Cans

- a) (2) Cans to Paint the Interior 6 walls with High Yellow Paint to be seen in the Daytime and to reflect the light at night of the "OVERSIZED" Enclosed Structure
- b) (2) Cans to Paint the Interior 6 walls with High Yellow Paint to be seen in the Daytime and to reflect the light at night of the "N.J.R." Enclosed Structure

Purpose.

To be able to see the Enclosed Lettering in the daytime without lights and to be enhance the night visibility with an light color interior



LOW-PROFILE LED HERO WATERMELON LIGHTS BY ROADWORKS

- Amber LED w/Clear lenses
- 1.535" Height
- 3-3/8" Diameter
- 3" Hole to Hole
- 3-Wire .180" Bullet Terminal
- All-Weather Installation Using Rubber Gaskets

QUANTITY AND PURPOSE

- Quantity - 28 Lights
- a) (20) Lights for "OVERSIZED" Enclosed Box. Light above each Letter and on the bottom of each letter and on Right and Left Side of the Compartment
 - b) (8) Lights for "N.J.R." Enclosed Box. Light above each Letter and on the bottom of each letter and on Right and left Side of the Compartment

Purpose.
To enhance the communication process with LED Lights in Night Traveling



14 LED 12" AUXILIARY WARNING LED LIGHT BAR

- 12" Auxiliary Warning Light Bar
- 14 LEDs with Strobe Function
- 6 Flash Pattern, Multiple Light Synchronization

QUANTITY AND PURPOSE

- Quantity - 4 Light Bar
- a) Right Arm Light Bar
 - b) Left Arm Light Bar
 - c) Right Bottom Light Bar
 - d) Left Bottom Light Bar

Purpose.
To enhance the communication process with LED Strobe Lights in Night Traveling



