

ARH 150 SPATIAL ORDERING & FORM

PROJECT 3: HYBRID BUILDING
PLANS

LARAY BYRD
SPRING 2021

DESIGN INSPIRATION

DIGITAL TEXTILES

The design of this building is inspired by the weaving process of textile productions. Each level is interlaced into one another by stairway circulation. It has a mesh veil that adds texture while maintaining the transparency of the glass behind. The exterior of this hybrid building is made of wood, glass, and aluminum mesh. The interior space features interconnected wood

space features interconnected wood

"Without vision, there is no form".

MAKER

dstnctDsgns. URBAN TEXTILES

CUSTOM INTERIORS & TEXTILE PRODUCTIONS

As a Design Engineer, I am proud to present dstnctDsgns, the "MAKER", of Digital Textile (DT) Productions. This company is a custom Interior Furnishings business that provides modern textile and one-of-a-kind specialty items to a wide range of consumers and broad range of styles. DT has partnered up with a non-profit 501(c)(3) led by Community Restoration Activist, "COLLECTOR", in order to aid Community Development Initiatives and Economic Rehabilitation efforts for inner-city communities. With endorsements of recommendation from various industry professionals and textile designers nationwide, We have combined knowledge and resources that will give color and definition to modern urban living. Our textile arts strengthen monumental values through interior fabrications inspired by cultural perspectives from interior points of view.

As "**MAKER**", I:

- Place myself inside of the shoes of the client and incorporate unique textile productions for commercial and residential interior development and custom design fabrications. I decipher interior visions based upon technical design presentations, individualized service strategies, and product implementation specifics. My role is to rewrite inside stories that exhibit cultural lifestyles of "hard-hit" ways of living.
- Produce individualized service strategies that outline guidelines and budget analysis.
- Deliver tailor-made technical design concepts that showcase beautiful home furnishings, textile designs, space solutions, and other inspirational design artwork.
- Network with industry professionals and collaborate with textile designers to implement "on the fly" developments for distinct projects lead by "COLLECTOR" for planning and development of inner city rehabilitation and new-build projects.
- Provide unique textile fabrics for furnishings that gives identity to what each space wants to be.

COLLECTOR

P.S.COMM

COMMUNITY RESTORATION ACTIVIST



"Manifesting Dreams Deferred".

I am a Community Restoration Activist and liaison to Urban Textiles, "MAKER". I direct federally funded government contracts that provide Economic Development Strategies and Community Recovery opportunities. My skills and networking resources began with the inner desire to uplift distressed Communities in need of Rehabilitation, Re-socialization, and Reintegration of the low-income Urban Cultures. There is no doubt that low-income areas experience dark and monotone lives. I have the pleasure to provide distressed inner-city Communities with Opportunities that amplify New and Modern Developments, Self-sufficiency, and Sustainability.

Inside of this particular assigned Budget Narrative, scheduled to begins in January 2022 for Urban Textiles, which is a major contract that "MAKER" and I orchestrate, we provide custom Technical Design Presentations, Fabrications, and other Specialty Items for a \$28M Community Recovery contract in Birmingham, Alabama. Along side "MAKER", I gather design details for both rehabilitation and new-build projects, and design/re-design Interiors Furnishings. I:

- Discuss design details with "MAKER" for Neighborhood Revitalization Work Plan Objectives, developing "Interior Needs Analysis" based on unit space listed in government spending budget. Urban Textiles is responsible for delivering ALL custom textiles for interior furnishings for this Recovery Initiative. I, "COLLECTOR", take the designs created by "MAKER" and implement various fabrication productions for the homes within distressed areas of inner-city Urban Communities.
- Deliver service-delivery strategies that develop textile industry and urban inner community networks. Strategies includes but are not limited to inclusion through social innovation, talent development, and workforce opportunities.
- Manage budgeting and annual reports that outline retail sales, private auctions, government funding, and workforce activity reports.
- Liaison between "MAKER" and general management operations, including wholesale distributors and the public sector of business.
- Coordinate retail displays and keep product rotation new and up-to-date. Purchase and maintain advertising and marketing materials that showcase new and recurring designs.
- Network with industry professionals and textile artists in order to "stay in the know" and maintain delivery cycles.
- Build a working community platform filled with people with a desire to live better qualities of lives through and with custom interior designs from Urban Textiles.

ARH 150 SPATIAL ORDERING & FORM
PROJECT 3- PRODUCTION PROCESS

TEXTILE ARTS

DIGITAL TEXTILES

LARAY BYRD

Delivering tailor-made textile designs concepts that reflects New Age Urban Cultures.



INITIAL CONSULT



1 MATERIAL SELECTION / CONSULTATION

INTERIOR DESIGN ELEMENTS & SERVICE STRATEGIES

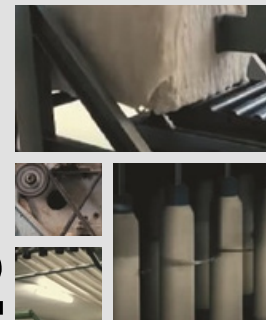
Developing an Individualized Service Strategy can limit and/or eliminate project modifications. Because a simple programmatic change can cause a cascading effect of revisions that must be made,

dstnctDsgns provides "Master" design models that reflect a menu of service details chosen by the client with consideration of fabrication budget and professional service fees.

Once interior design products and services are agreed upon, then the implementation process begins. For example: A Community Restoration project would like to purchase particular fabric designs to cover built-in window seats for 30 kitchen units. During consultation, Maker presents custom designs options that includes raw materials, color palates, budget analysis, and other specialty items that would create unique values for the project design. Specifications are decided on, material quantities are confirmed, and a contractual agreement is signed. At this point, dstnctDsgns will then contact product distributors/manufacturers and begin the production process. The next production steps are as follows:

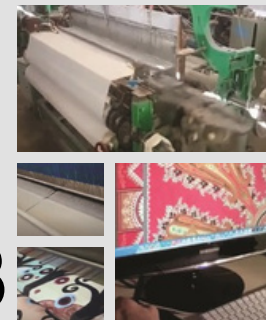
MATERIAL FABRICATION

2



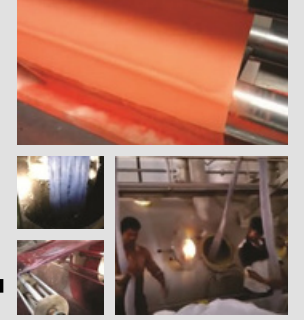
SPINNING

3



WEAVING

4

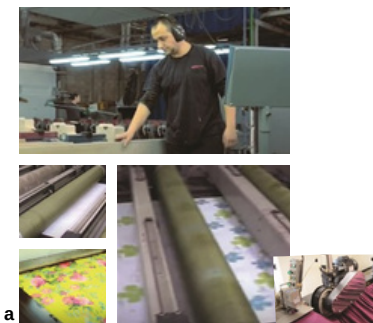


FABRIC DYEING

While small to medium sized orders are able to be produced "in-house", wholesale orders for larger projects are often outsourced to Textile affiliates and industry professionals once design and materials are selected. This is to maintain production control, quality-assurance, and adequate turnaround time for client productions. Urban Textiles is a Community-based business and is not equipped at this time to produce on very large scales. However, we are able to design custom creations, manage all order sizes, and deliver products and services to a wide range of consumers and broad range of styles with no problem.

After raw material is fabricated and dyed to compliment distinct designs, we deliver printing, finishing, and manufacturing services that completes specifications of confirmed products and service agreements.

5



PRINTING

6

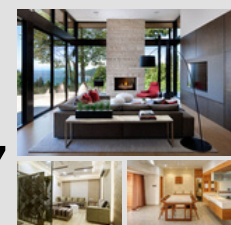


MANUFACTURING

b

FINISHING

7



Urban Textiles provides custom Interior Fabrics that gives definition and insight to inner-city urban cultures. LaRay Koti of dstnctDsgns has combined forces with Community Restoration Activist, P.S. Comm, in order to provide textile services and resources for home interior furnishings. The main objective is to increase quality-of-life for residents and families within low-to-moderate income communities, and pioneer a new movement in economic growth and sustainability from an interior design perspective.

Urban Textile Pursuits is a Community-based initiative focused on:

- Community Relevance
- Cultural Representation
- Generational Stability
- Economic Power

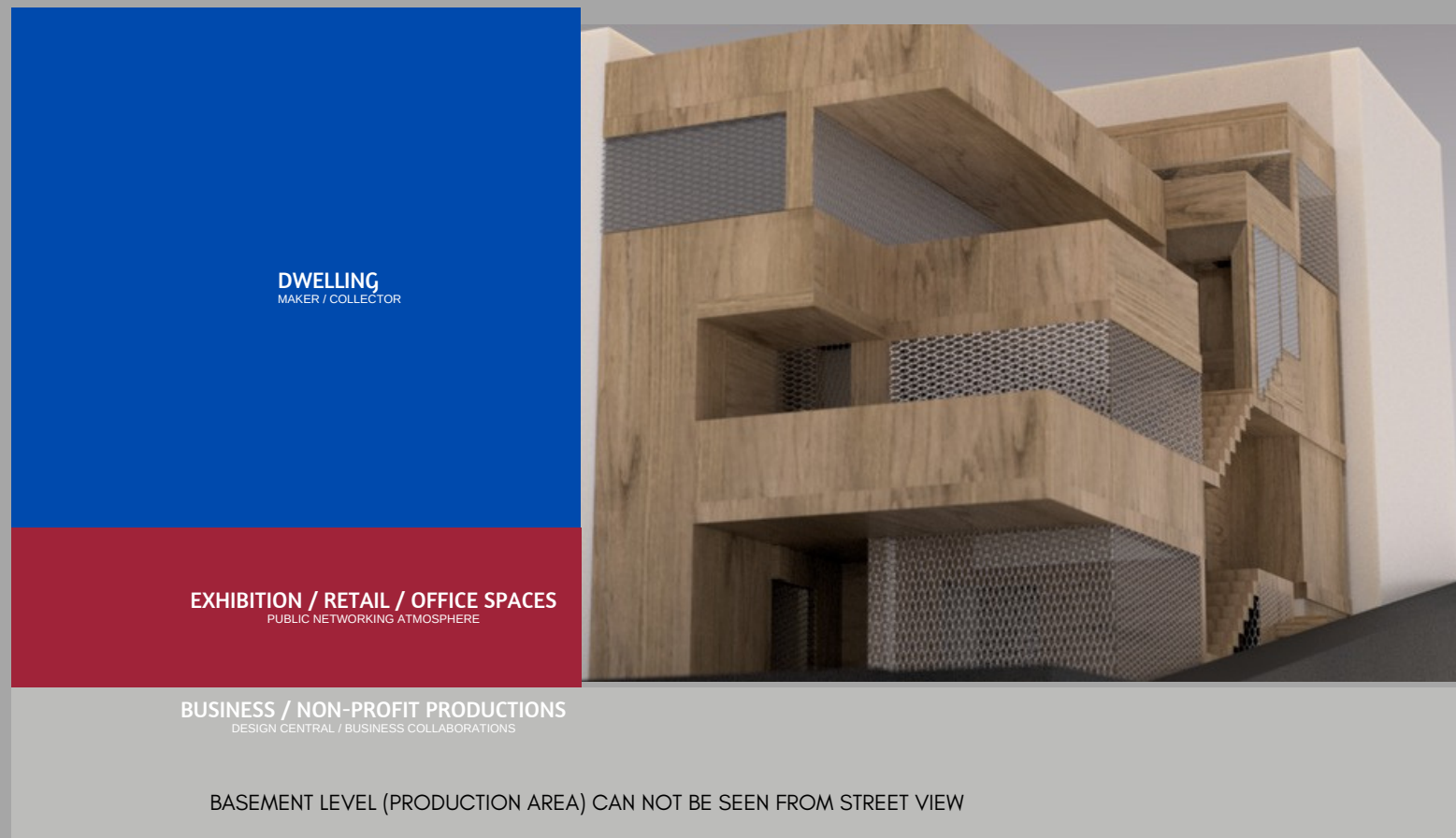
SITE ANALYSIS

DIGITAL TEXTILES

Located on the corner of Grant Avenue and Nobles Alley in San Francisco, California is the "Digital Textiles" location. It is a modern building that stands apart from its Victorian style surroundings. Unique stairways around program space (inside and outside) creates design spaces that supports a beautiful circulation experience.

Large windows allow environmental influences inside, which creates a union of the interior to exterior surroundings. Aluminum mesh panels overlay glass panels. This material provides more seclusion while maintaining transparency and quality of light during night time hours. Outer terraces bring another element of beauty and quality to this woven design, allowing outside experiences inside building spaces. This multi-purpose building offers both privacy and community involvement.





PROGRAM ANALYSIS

DIGITAL TEXTILES

This Interior Textile company mostly cater to a federally funded government contract for Community Restoration for inner-city urban dwellers. This project initiative is in the process of building new developments that promotes community revitalization. dstnctDsgns and P.S.Comm, the leaders of interior design presentations, uses this facility to fabricate designs that fit residents of various sizes and income ranges. This company welcome public presence and community involvement pursuits, therefore it is designed in a way that suits, public engagements, business collaborations, and private dwellings for "MAKER" and "COLLECTOR" during project implementation. This is a major project scheduled to progress throughout 10 years. The mission for community revival depends on the people that will uplift self-sufficiency and sustainability.

Production details and program summaries are separated by floor.

ACTIVITY LIST

Program	Level	Title	Features /	User	Activity /	Adjacencies	Separations	Program Detail
Production	Basement	Design Central	MIMAKI. Direct to Fabric or Paper Digital	Public	Business / Non-profit Productions.	Seminars_Works hops / Restroom	Seminars_Works hops / Restroom	Digital Textile Productions.
Production	Basement	Design Central	Rimslow TR300-1850C. Coating	Public	Business / Non-profit	Seminars_Works hops / Restroom	Seminars_Works hops / Restroom	Digital Textile Productions.
Production	Basement	Design Central	B-Steam. Fabric Steamer	Public	Business / Non-profit Productions.	Seminars_Works hops / Restroom	Seminars_Works hops / Restroom	Digital Textile Productions.
Production	Basement	Design Central	MIMAKI Washer. TR600-1850W	Public	Business / Non-profit	Seminars_Works hops / Restroom	Seminars_Works hops / Restroom	Digital Textile Productions.
Production	Basement	Design Central	Workflow Control System.	Public	Business / Non-profit	Seminars_Works hops / Restroom	Seminars_Works hops / Restroom	Digital Textile Productions.
Exhibition	Floor 1	Exhibition	Community Collaboration	Public	Custom Textile Fabrics, Swatches, Tools, Raw Material Samples	Retail	Vending Area	for workshops, seminars, and meetings. Major topics includes: Build interest/Discovery of interest, Network
Exhibition	Floor 1	Community Courtyard	Community Collaboration	Public	Custom Textile fabrics,	Retail	Vending Area	Collaboration
Exhibition	Floor 1	Vending	Community Collaboration	Public	Custom Textile fabrics,	Restroom	Retail / Exhibition	Snacks, Coffee, Sodas, Water
Exhibition	Floor 1	Stairway	Transition	Public	Circulation	ALL	Vending /	Circulation to
Exhibition	Floor 1	Retail	Product sales / Affiliate Services	Public	Business / Non-profit productions	Business Offices	Open	fabrics, swatches, tools, equipment, and raw materials
Exhibition	Floor 1	Maker / Collector	Private facilities	Public	Business / Non-profit			Business operations
Exhibition	Floor 1	Restroom	Private facilities	Public	Restroom			Private facilities
Dwelling	Floor 2	Stairway	Transition	Public	Circulation	ALL	Bathroom /	Circulation to
Dwelling	Floor 2	Common Dwelling	Living area / Bar / Balcony	Collector	Share dwelling area designated	Design Library / Bathroom /	Open	Rest and relaxation in a
Dwelling	Floor 2	Bathroom	Private facilities	Collector	Bathroom	Common Dwelling /	Collector's Bedroom /	Private facilities
Dwelling	Floor 2	Collector's	Bed / TV /	Collector	Private Quarters	Common	Common	Common
Dwelling	Floor 3	Stairway	Transition	Public	Circulation	ALL	Vending /	Circulation to
Dwelling	Floor 3	Maker's	Bed / TV /	Maker	Private Quarters	Bathroom	Common	Private Quarters
Dwelling	Floor 3	Terrace		Maker / Collector	Leisure			
Dwelling	Floor 3	Bathroom	Private facilities	Maker / Collector	Bathroom	Bedroom / Common	Bedroom	Private facilities
Dwelling	Floor 4	Stairway	Transition	Public	Circulation	ALL	Vending /	Circulation to
Dwelling	Floor 4	Design Library	for textile and natural raw materials used in custom productions.	Maker	Global Textile Design Library	None	Maker's Dwelling	essentials / References / Product Samples. This collection



VTN ARCHITECTS
HO CHI MINH CITY, VIETNAM

2017

PROJECT 1 - CASE STUDY

STACKED PLANTERS HOUSE

THE STACKED PLANTERS HOUSE BY VO TRONG NGHIA (VTN) ARCHITECTS, LOCATED IN HO CHI MINH CITY, VIETNAM, A HIGH-DENSITY NEIGHBORHOOD THAT FACES SERIOUS AIR POLLUTION AND RISK OF FLOODS. IT WAS COMPLETED IN 2017, DURING A TIME OF RAPID URBANIZATION AND LOSS OF TROPICAL GREEN SPACE. THESE FACTORS INSPIRED VTN ARCHITECTS TO CREATE GREEN SPACE WITHIN THE HIGH-DENSITY NEIGHBORHOOD IN ORDER TO BRING TOGETHER THE DISCONNECT OF NATURE AND HUMAN EXPERIENCE.

THIS BEAUTIFUL MULTI-FAMILY DESIGN OFFERS INDEPENDENT PRIVATE SPACES WITH CONGREGATION AREAS (SEMI-OUTDOOR SPACES THAT SERVES AS LIVING AND DINING AREAS), WHICH COMPLIMENTS FOR GATHERINGS. THE OVERALL DESIGN CAN BE VIEWED AS A CONCRETE BOX THAT INCLUDES STACKED DWELLINGS SEPARATED BY HORIZONTAL CONCRETE SLABS AND ACCENTED WITH TREES THAT EMERGE FROM WITHIN ITS CONSTRAINTS. SPATIAL ORDERING, AT FIRST GLANCE, WOULD SEEM RANDOM. HOWEVER, THIS NEATLY PLANNED SITE WAS STRATEGICALLY BUILT TO MAXIMIZE LIVING SPACES, ALLOWABLE HEIGHT STANDARDS, AND TO BRING GREENS BACK TO THE URBAN AREA. THE RESULT OF VTN ARCHITECT'S VISION UNFOLDED AS A HOUSE OF SMALL PARKS IN A DENSELY POPULATED NEIGHBORHOOD.

THE STACKED PLANTERS HOUSE IS PREDOMINANTLY MADE UP OF A CEMENTITIOUS POUR IN PLACE COMPOSITE MATERIAL CALLED TERRAZZO. THIS SPECIAL MATERIAL ACCOMMODATED VTN'S DESIGN INTENSION WELL. IT ALLOWED FOR CUSTOM CIRCULATION AROUND POTTING SPACE FOR TREES AND CREATED UNIQUE DESIGN SPACES THAT SUPPORTS A BEAUTIFUL CIRCULATION EXPERIENCE AND SUSTAINABILITY OF STRUCTURE. LARGE WINDOWS ALLOW NATURE'S INFLUENCE INSIDE, WHICH CREATES A UNION OF THE INHABITANTS TO NATURE. EMBEDDED ACCENT LIGHTS ON THE OUTER TERRACES BRING ANOTHER ELEMENT OF BEAUTY AND QUALITY OF LIGHT DURING NIGHTTIME HOURS. THIS MULTI-FAMILY HOME PROVIDES BOTH PRIVACY AND COMMUNITY LIVING IN A SINGLE SPACE.



PROJECT 2

CUBE CONSTRUCTION

THE PLANTERS CUBE

The Planters Cube has a unique Poetry of Space. It is best to consider its design as a lot for containers, which are placed along a vertical grid and extends within the depths of its height. Each contained area are embedded and extruded volumes of space within load-bearing walls that reveals both inner and outer world experiences. It applies conceptual space recognition and operative design concepts that includes: stacking, embedding, perforated floor plates, interlocking/intersecting floor plans, and thickened walls. Poetry of space opens indoor perforated plans to outdoor space, and showcase distinctions of uniquely extruded and implanted elevations.

This abstract design, inspired by my Project 1 Case Study, "Stacked Planters House", has a seemingly arbitrary design at first glance. However, its spatial and transformative composition is very simple and easy to decipher. It is amorphous by nature and haphazard to say the least. I have taken the Stacked Planters House's design focus of creating green space for high-risk air pollution and flood zones in order to bring together the disconnect of nature and human experience. In this design I also welcome nature as a lived experience and promote containment from elemental factors. In developing this project, "Planters Cube", I explored generative potential of VTN Architects precedents. In order to create a unique space that offers seclusion and accessibility as a lived experience, I decided that wood, glass, and concrete would be complimentary for dramatic changes in space and form. Materiality and construction consists of pour-in-place concrete implants that penetrate wooden pathways of circulation and uses over-sized glass panels to allow nature's influence inside, which creates a union of the inhabitants to nature.

This multi-level modern design exhibits private and community living. Veranda style thresholds blurs the line of inner and outer limits while over-sized glass infills opens to surrounding green space and natural light. It demonstrate an open plan layout that consists of private quarters used for served space. At the center of this design, and possibility one of the most intriguing attributes, stands the elevator. It stands in a concentric location, interlocking each level at the heart of the site plan. This building's atmosphere exemplifies a sleek, tranquil, and harmonious environment that flows both within and outside with ease.

PLANTERS CUBE

LaRy Koti Byrd

PROJECT 3: HYBRID BUILDING

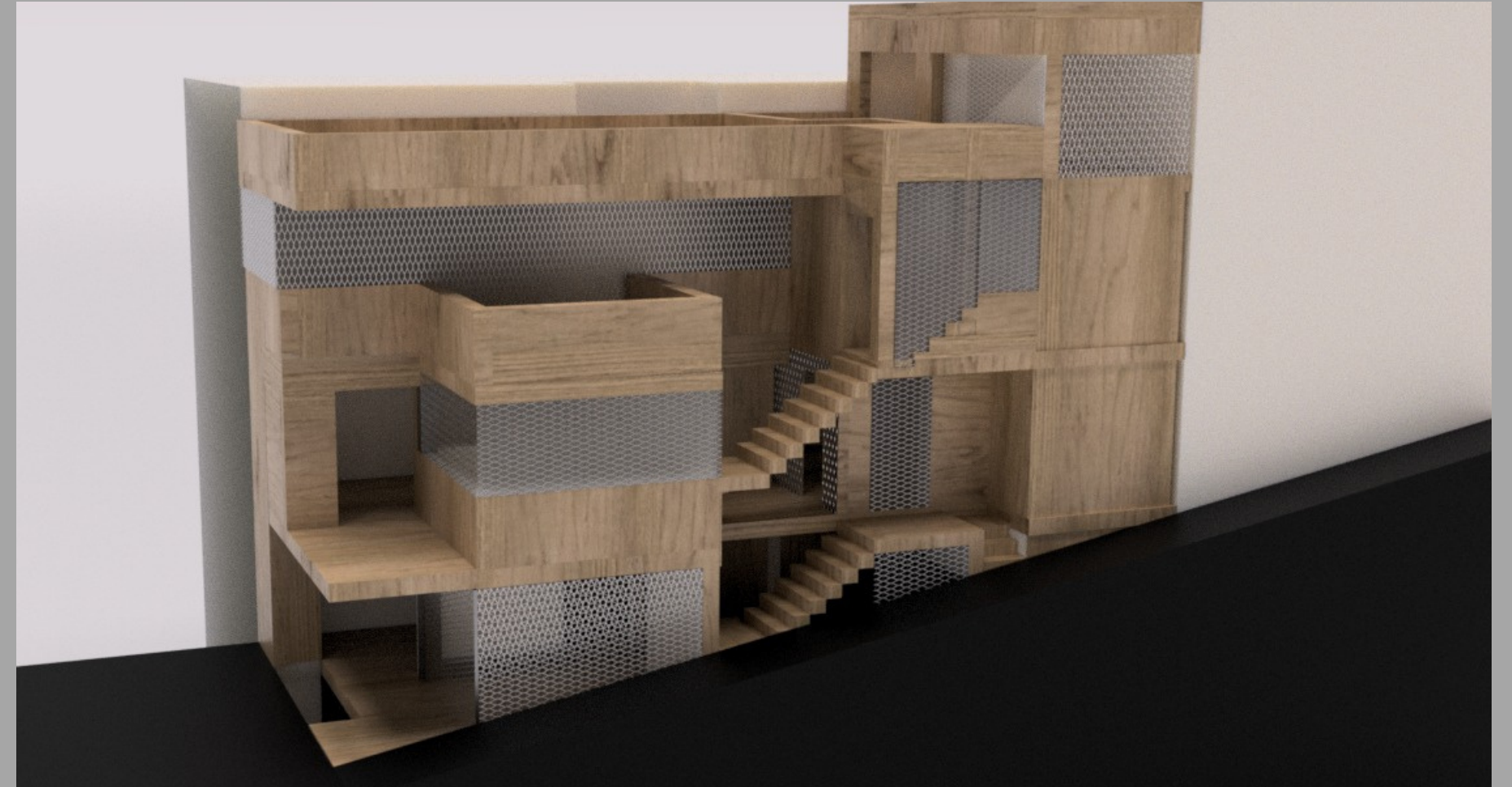
ORIGIN



PROJECT 1: CASE STUDY
STACKED PLANTERS HOUSE

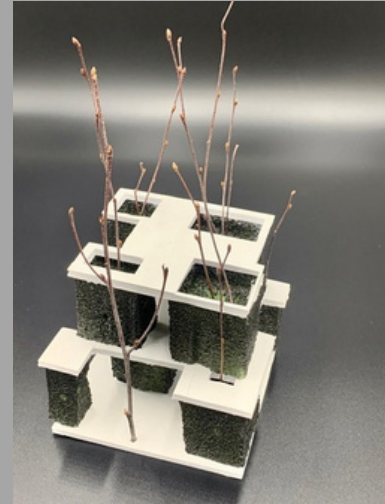


PROJECT 2: PASSAGE MODEL
CUBE CONSTRUCTION



This project model's operative design was inspired and built around the footprints of my initial case study, "Stacked Planters House". It differs in that it is an inverted demonstration of containment. Where planters housed trees and gave room for expansion, this project created containment through glass and expanded exterior walls. The selection of glass allowed me to maintain environmental transparency and seclusion. Resemblances are seen in wall placements and perforated floor plates that are stacked, embedded, and interlocked. The poetry of space features a combination of textures used and arranged to compliment program circulation and also highlight solid/void areas built among a family of spaces, functions, and interactions.

Selected materials of wood, glass, stone, and aluminum mesh are applied according to space recognition of positive and negative spaces. For instance, interior walls and ceilings seems to be woven like fabric where vertical containers (rooms) are placed. Also, taking away from our previous passage model, the illusion of expanded wall and embedded placements gives definition to the weaving, interlocking and interconnection of textile productions.



DESIGN STUDY MODELS

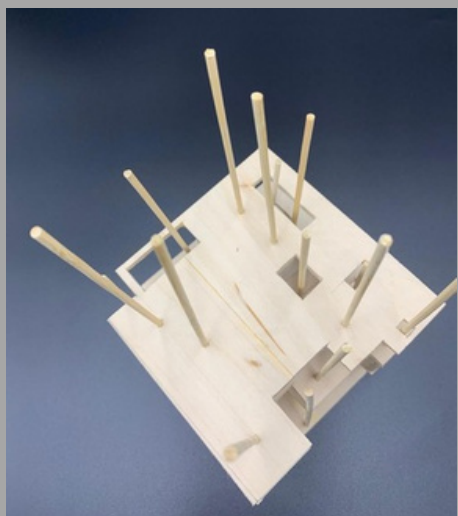
PROJECT
1: CUBE CONSTRUCTION

MISSION:

To manifest a built construction that applies conceptual space recognition and the consideration of material, solidity, and solid/void placement.

This operative design, built around the footprints of the "Stacked Planters House", offers spaces that are stacked, embedded, perforated, and interlocked.

The combination of textures used are arranged to compliment transitions and highlight solid / void areas built among a family of spaces, functions, and interactions.



DESIGN STUDY MODELS

PROJECT
1: CUBE CONSTRUCTION

REBUILD STABILITY
Spatial Ordering & Form
BY LARAY KOTI

LOGIC OF SOLIDITY:
EXPLORING POSITIVE & NEGATIVE SPACES
MATERIALS: WOOD, GLASS, STONE

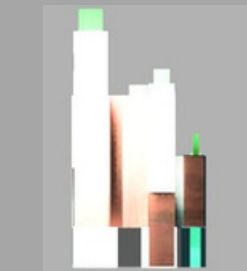
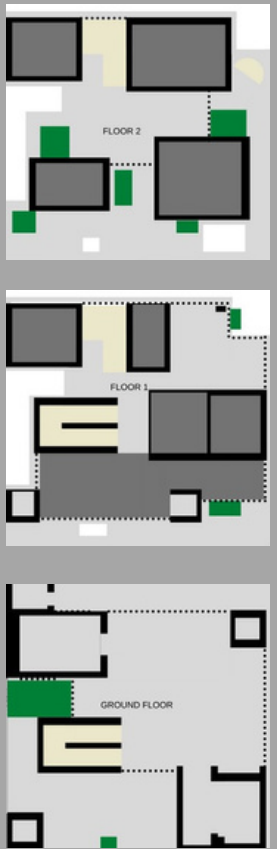
MISSION:
To manifest a built construction that applies conceptual space recognition and the consideration of material, solidity, and solid/void placement.

This operative design, built around the footprints of the "Stacked Planters House", offers spaces that are stacked, embedded, perforated, and interlocked.

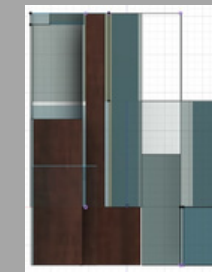
The combination of textures used are arranged to compliment transitions and highlight solid/void areas built among a family of spaces, functions, and interactions.

POETRY OF SPACE FEATURES:

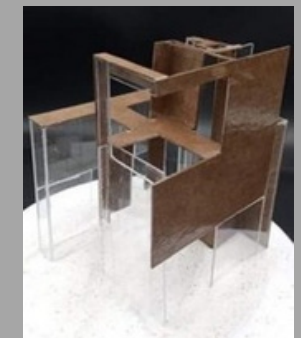
- Glass walls (Transparency)
- Wall Apertures / Perforated Floor Plates
- Expanded placements and elevations



SOLID MODEL
Rear Elevation Diagram



VOID MODEL
Rear Elevation Diagram

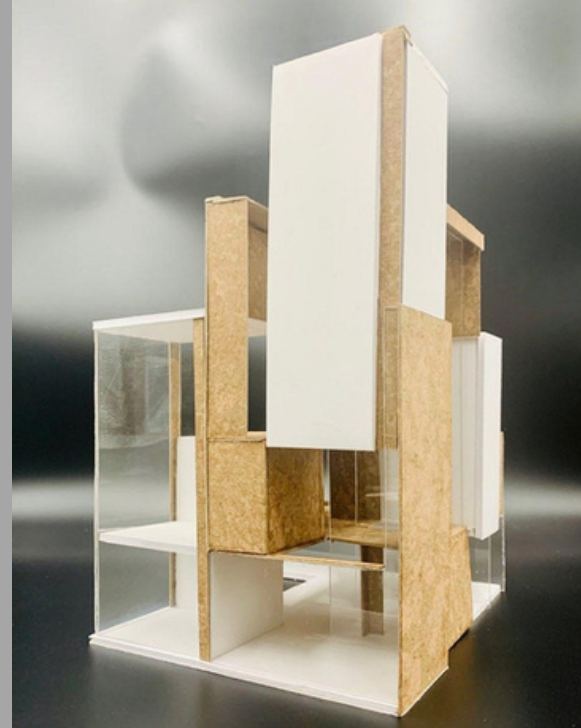


DESIGN STUDY MODELS

PROJECT 2: PASSAGE MODEL

Construction Material:

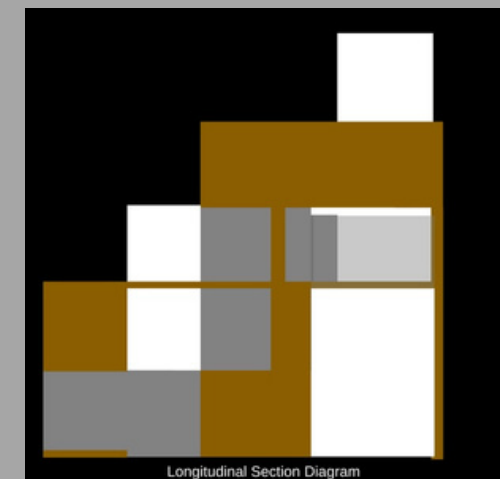
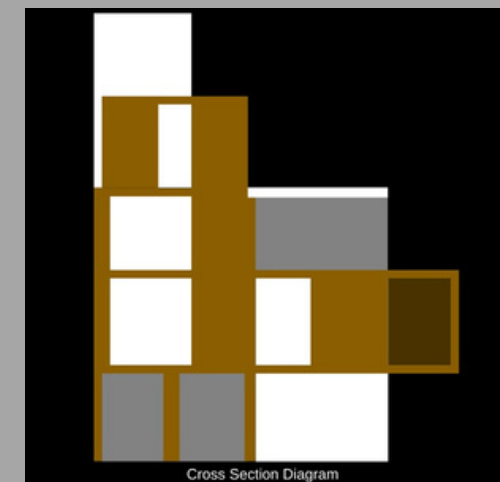
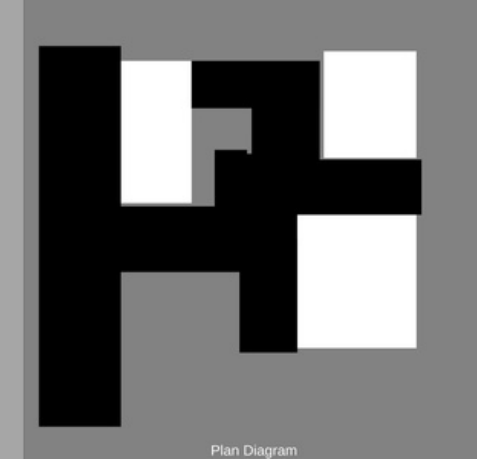
Wood with Glass Partitions (Model: Chipboard and Acrylic)



Assuming the role as the architectural poet, I would explain "The Planter's Cube" as a place that draws illusions of elevated platforms and implants within perforated spaces. This place and space is created with wood and glass. Construction fundamentals include procedures that highlight embedded and extended frames and planes. Wood is supported by over-sized glass partitions. Transitions of extruded volumes weaves floor levels and distinguish differences of space, as glass partitions make the spectator's discernment no simple task.

Development techniques results in areas/spaces that are placed along vertical grids that exhibit embedded rooms that taper horizontal floor plates/planes and extend ceiling heights.

DIAGRAMS

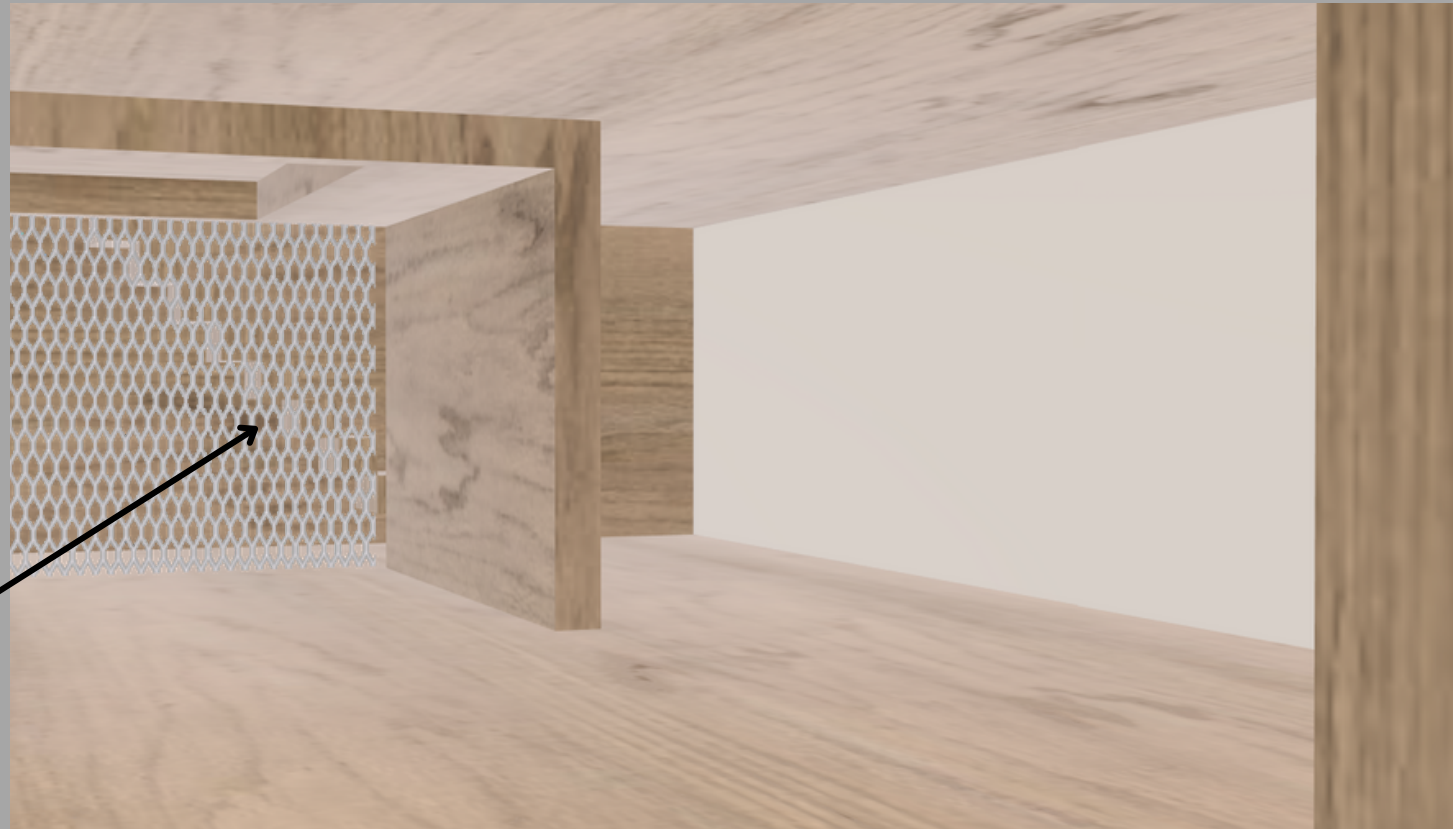


DIGITAL TEXTILES

CAPT LARAUY BYRRDING TECTONIC AND LIGHT

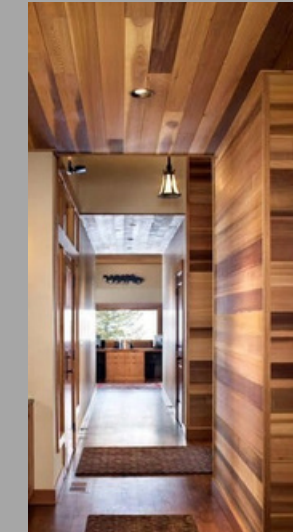


Stairways connects upper and lower circulation networks
Example of Interior and Exterior Stairway design.
Captures staircases, as they weave inside and outside of the building's facade.



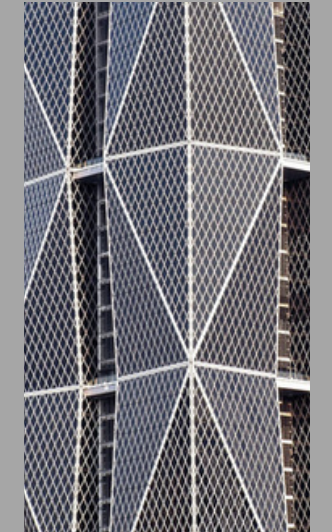
Exterior aluminum mesh texture veils the building, offering structural aesthetic, privacy and transparency. It is installed over glass panels, which allows natural light in,

An "Inter-locking" display of wood as fabric, from wall to ceilings



Accent walls and ceilings provide warm interior space, accenting circulation

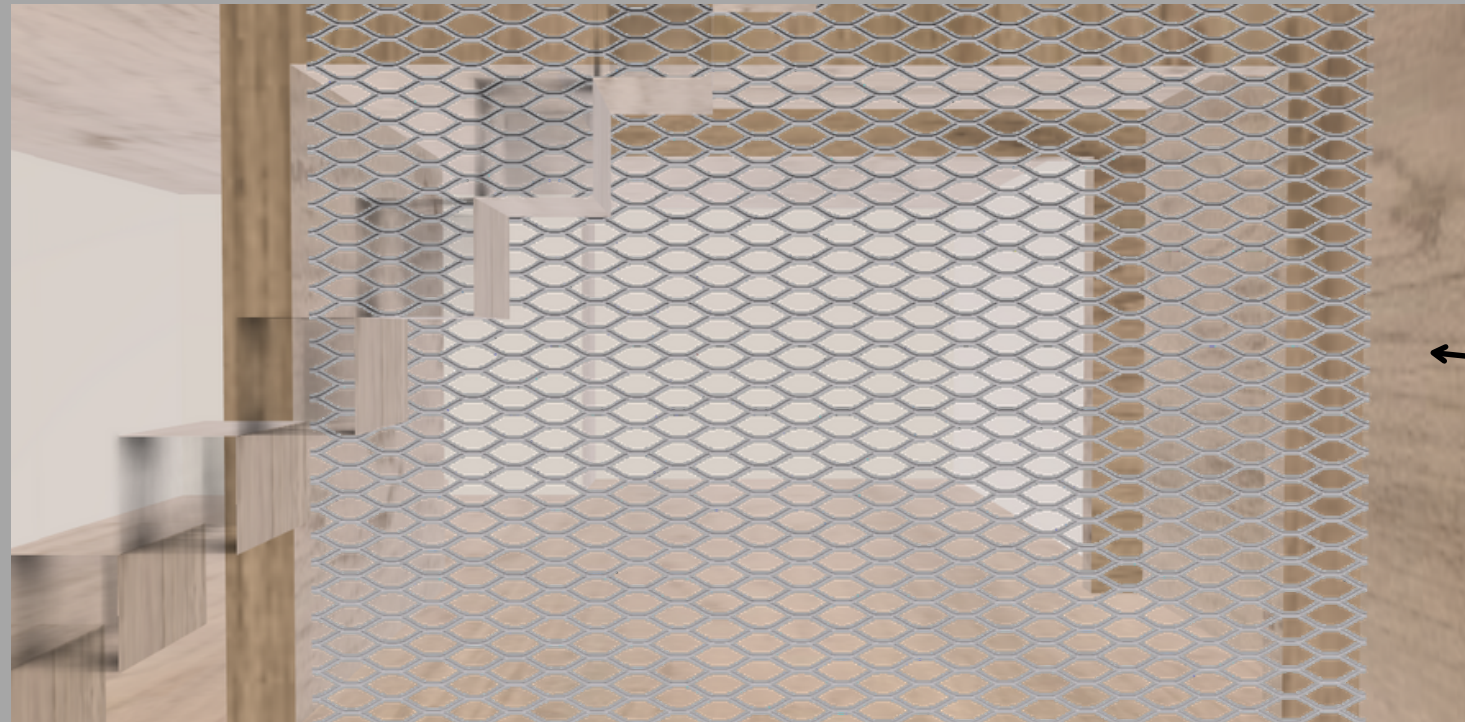
Structural Fabric of "Digital Textile Productions"



Aluminum mesh blurs the lines of structure, protection, and transparency.

Wood walls and ceilings / Close up of Exterior Mesh
Interior and exterior building material interlocks network circulations and provides aesthetic highlights to interior design.
Tectonic provides texture, strength, and privacy while maintaining transparency and conceptual integrity.

Basement Seminar/Workshop Space



A look into the interior from facade
Example of Basement Level from Nobles Alley
Seminar/Textile Productions Area

2 foot gap from building foundation wall to Nobles Alley sidewalk provides a natural light tunnel to the basement area's Seminar /Workshop and Production areas.



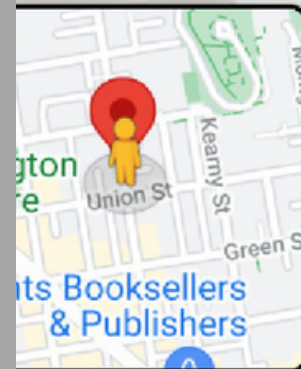
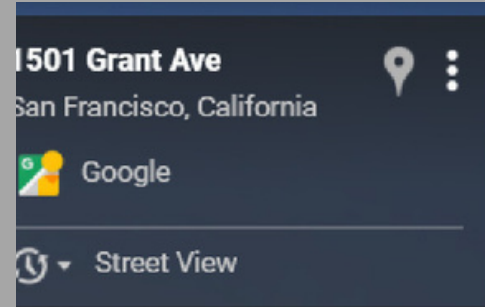
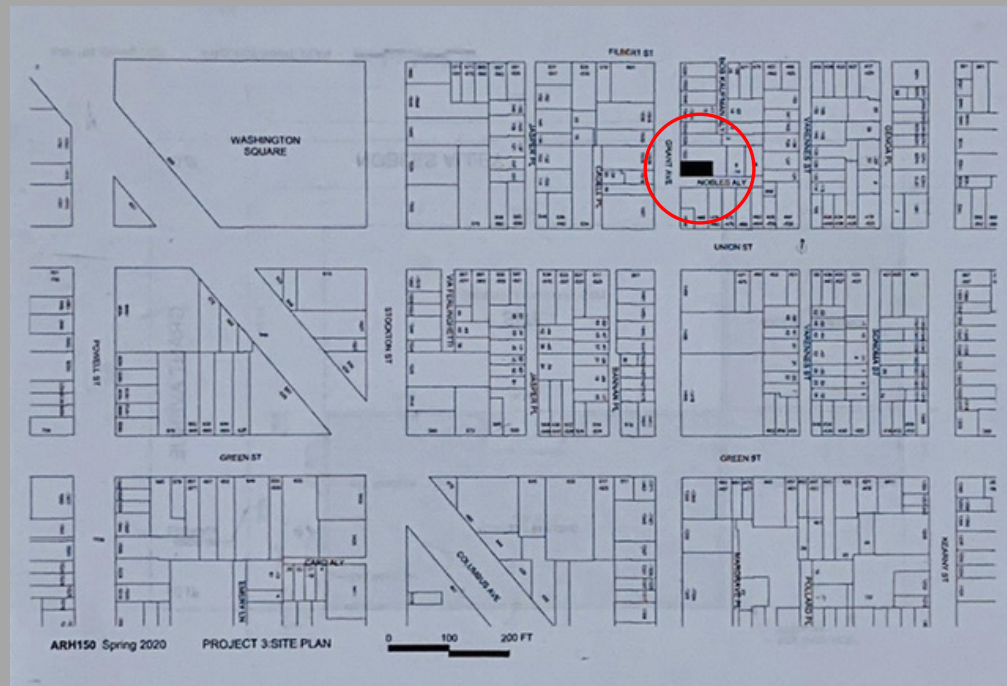
Digital Textile Productions Area

seminar / Workshop Space

Example of Basement Level from Nobles Alley
Seminar/Textile Productions Area

DIGITAL TEXTILES SITE

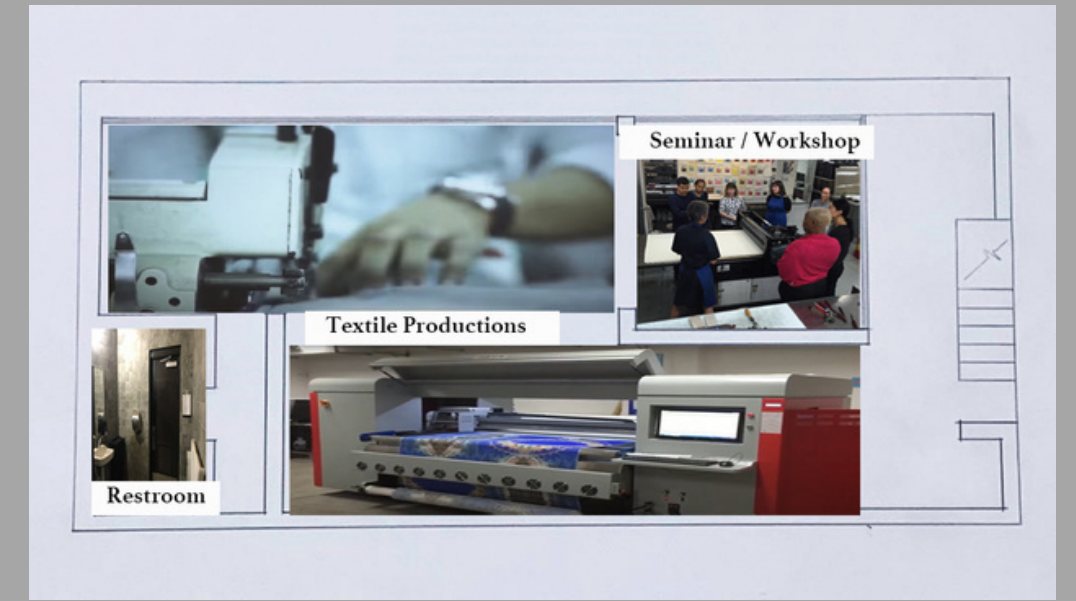
LOCATED IN SAN FRANCISCO, CALIFORNIA ON THE CORNER OF GRANT AVENUE AND NOBLES ALLEY





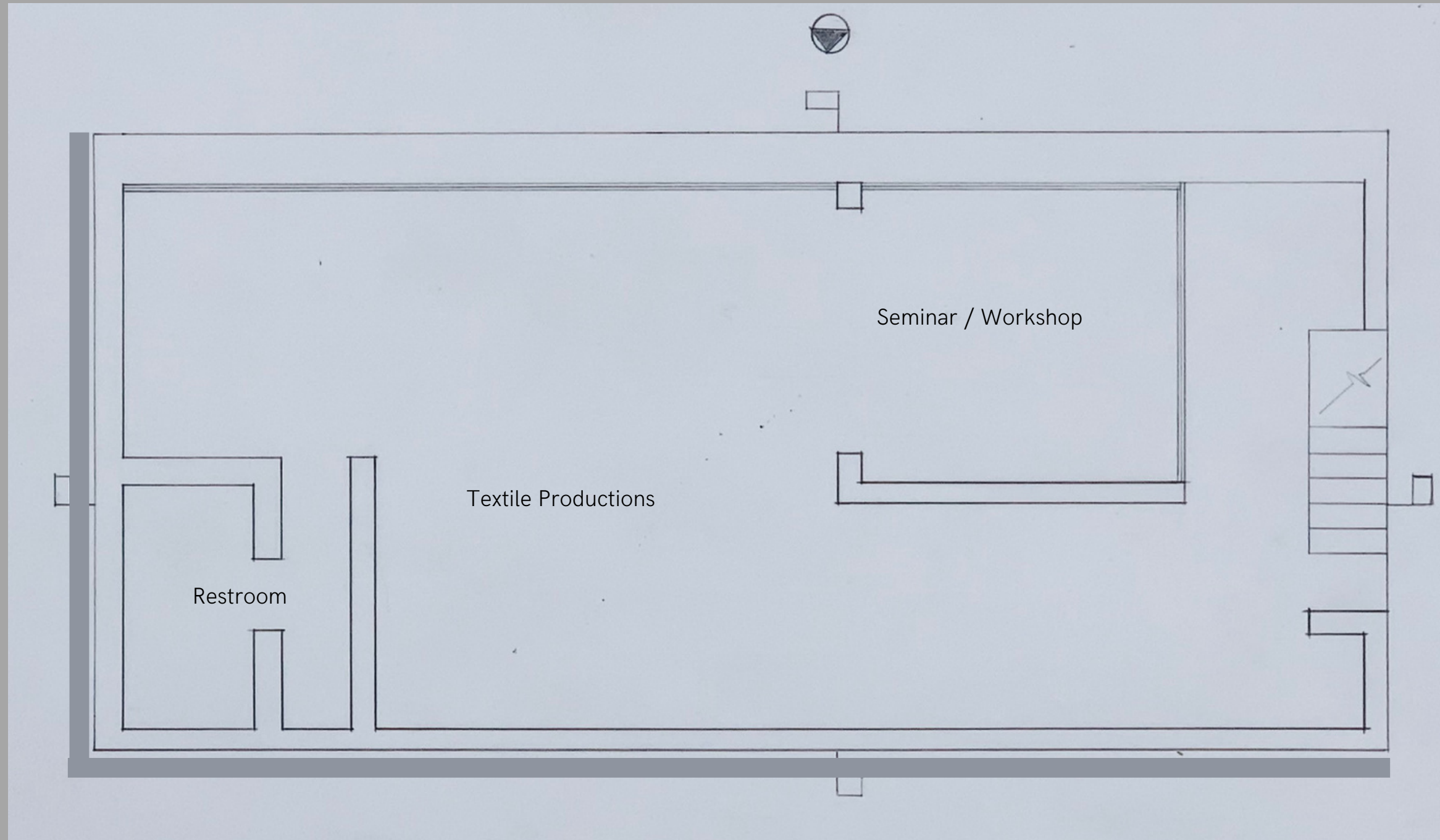
BASEMENT LEVEL

Textile Productions
Seminar / Workshops
Restroom



Collage

Basement Floor

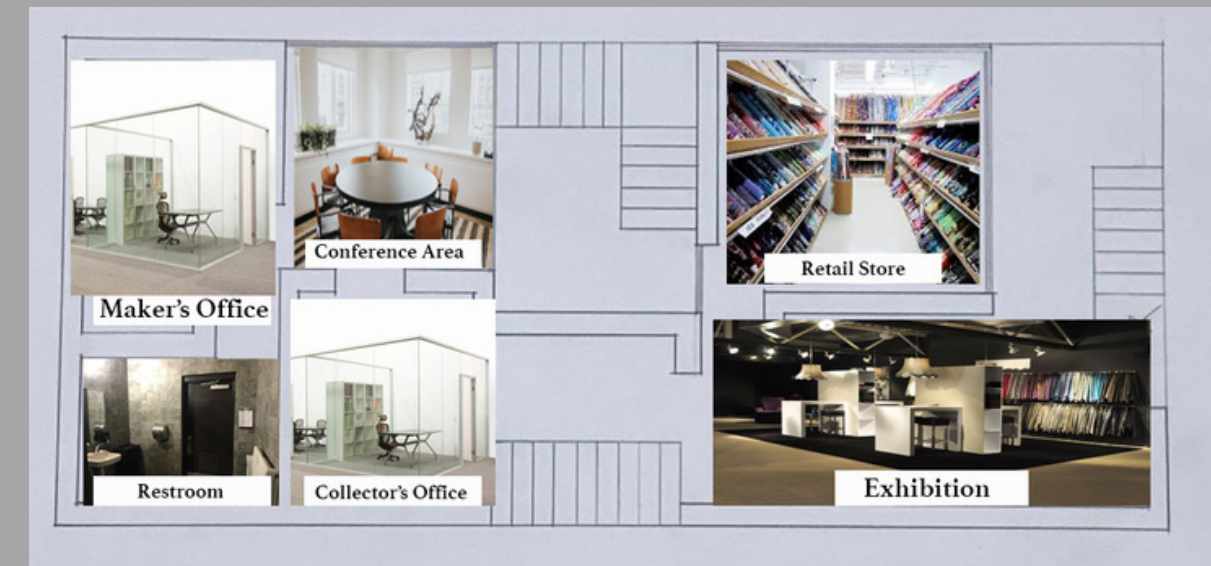


Business / Non-profit Productions

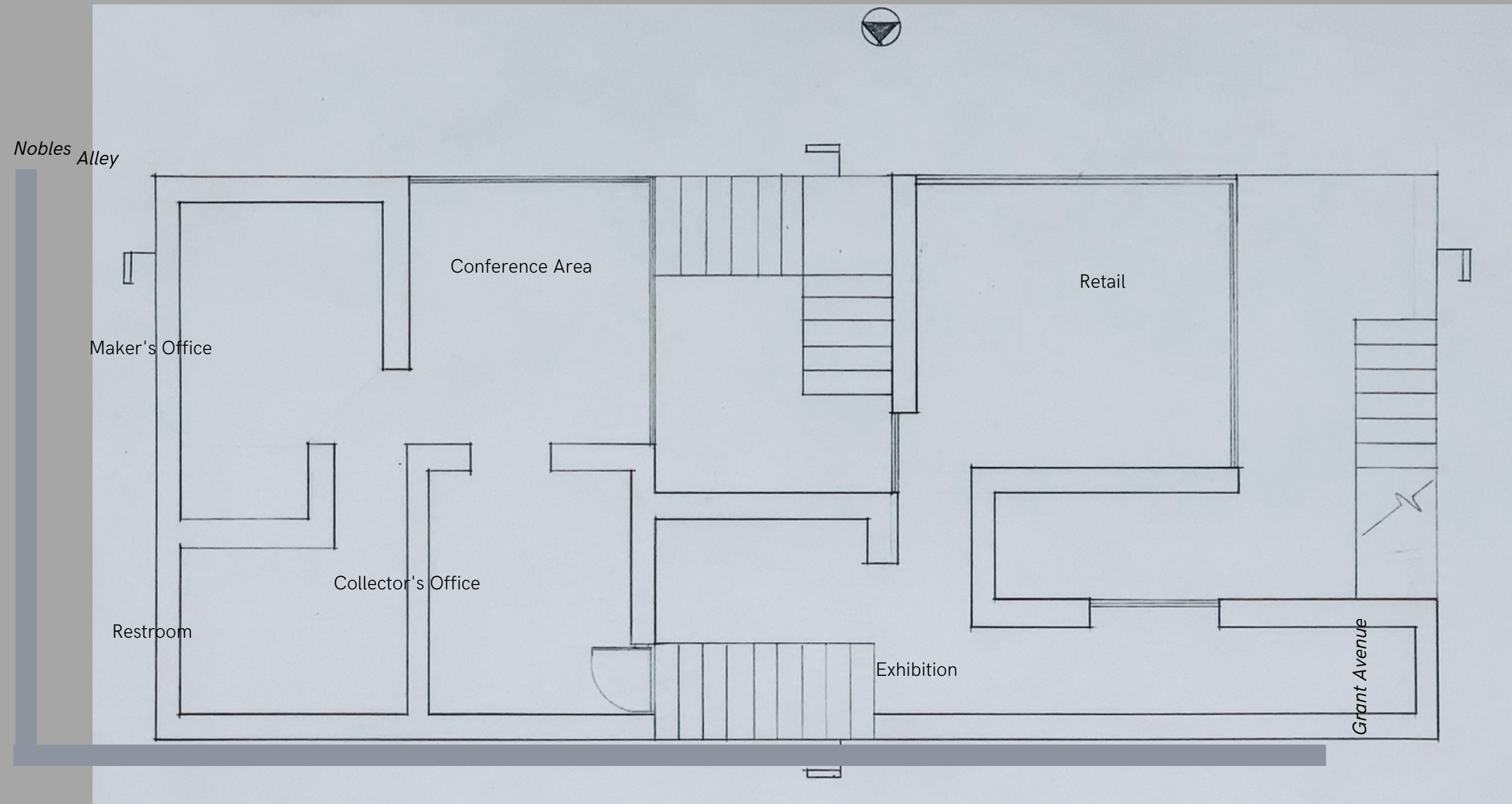


GROUND FLOOR

- EXHIBITION
- RETAIL
- COLLECTOR'S OFFICE
- MAKER'S OFFICE
- CONFERENCE AREA
- RESTROOM



Ground Floor

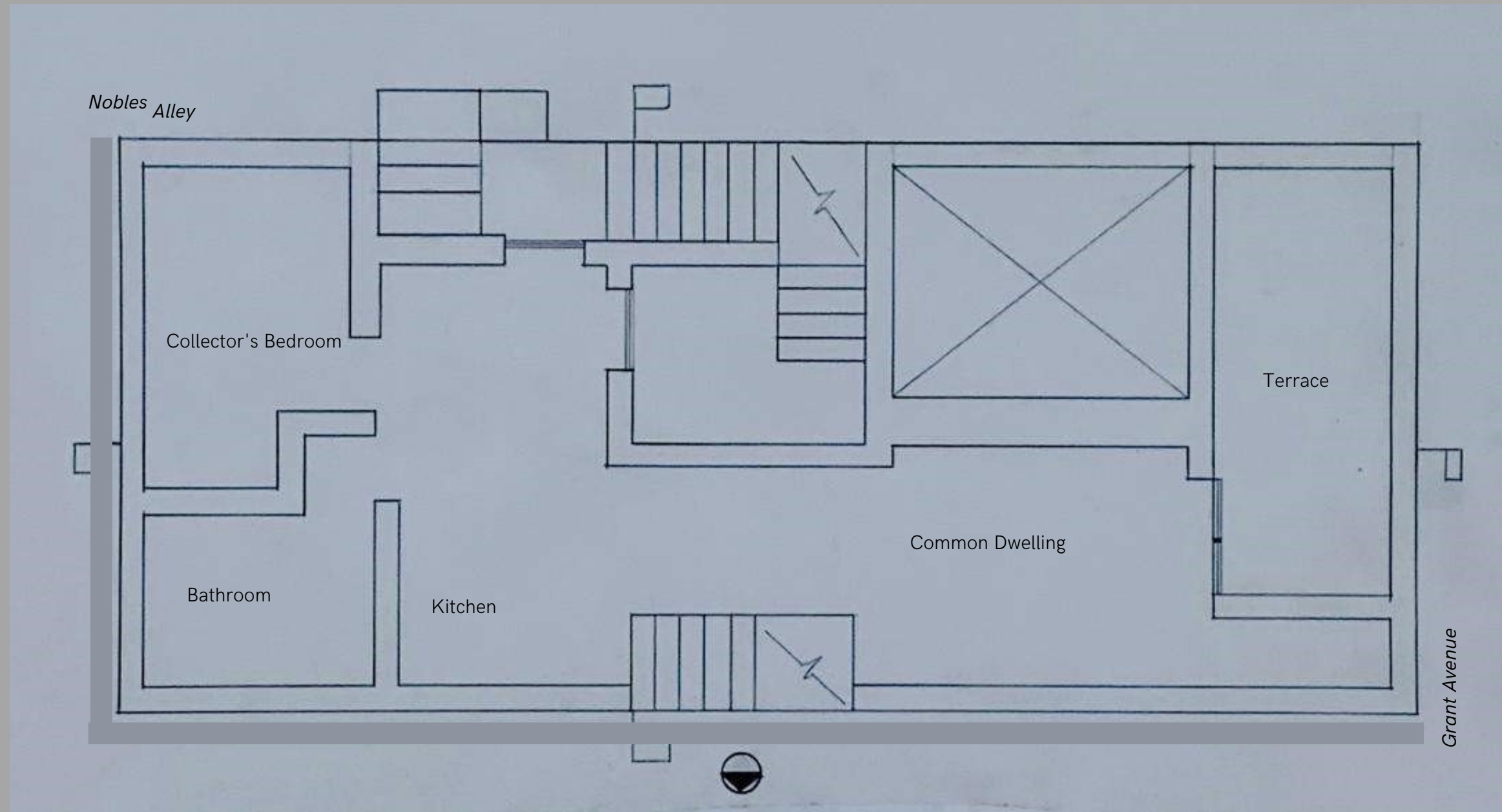


Exhibition / Retail / Office Spaces



FLOOR TWO
COMMON DWELLING
KITCHEN
COLLECTOR'S BEDROOM
BATHROOM

Floor 2



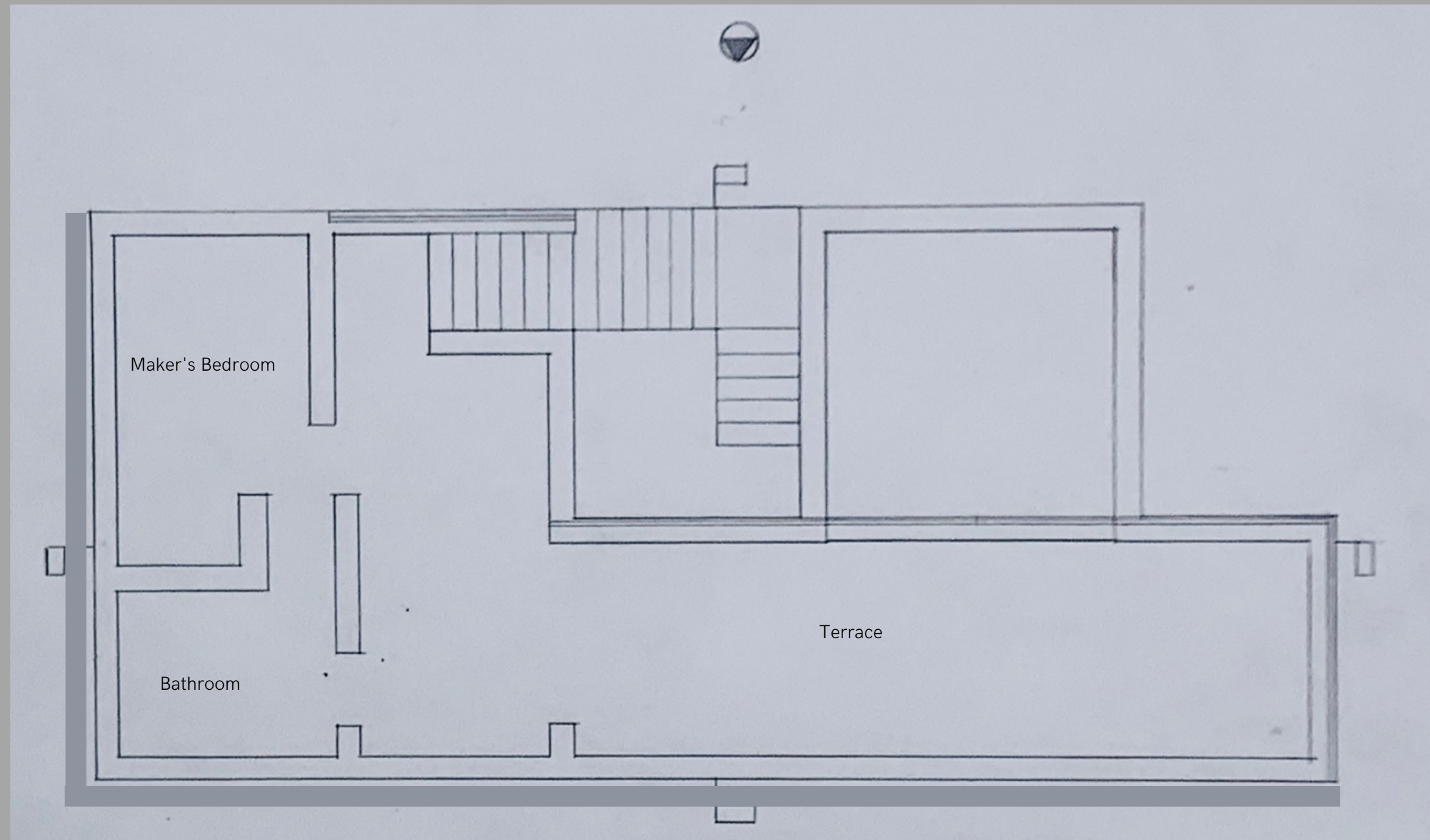
Dwelling



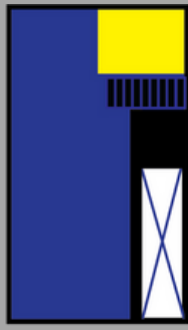
FLOOR THREE
MAKER'S BEDROOM
BATHROOM
TERRACE



Floor 3

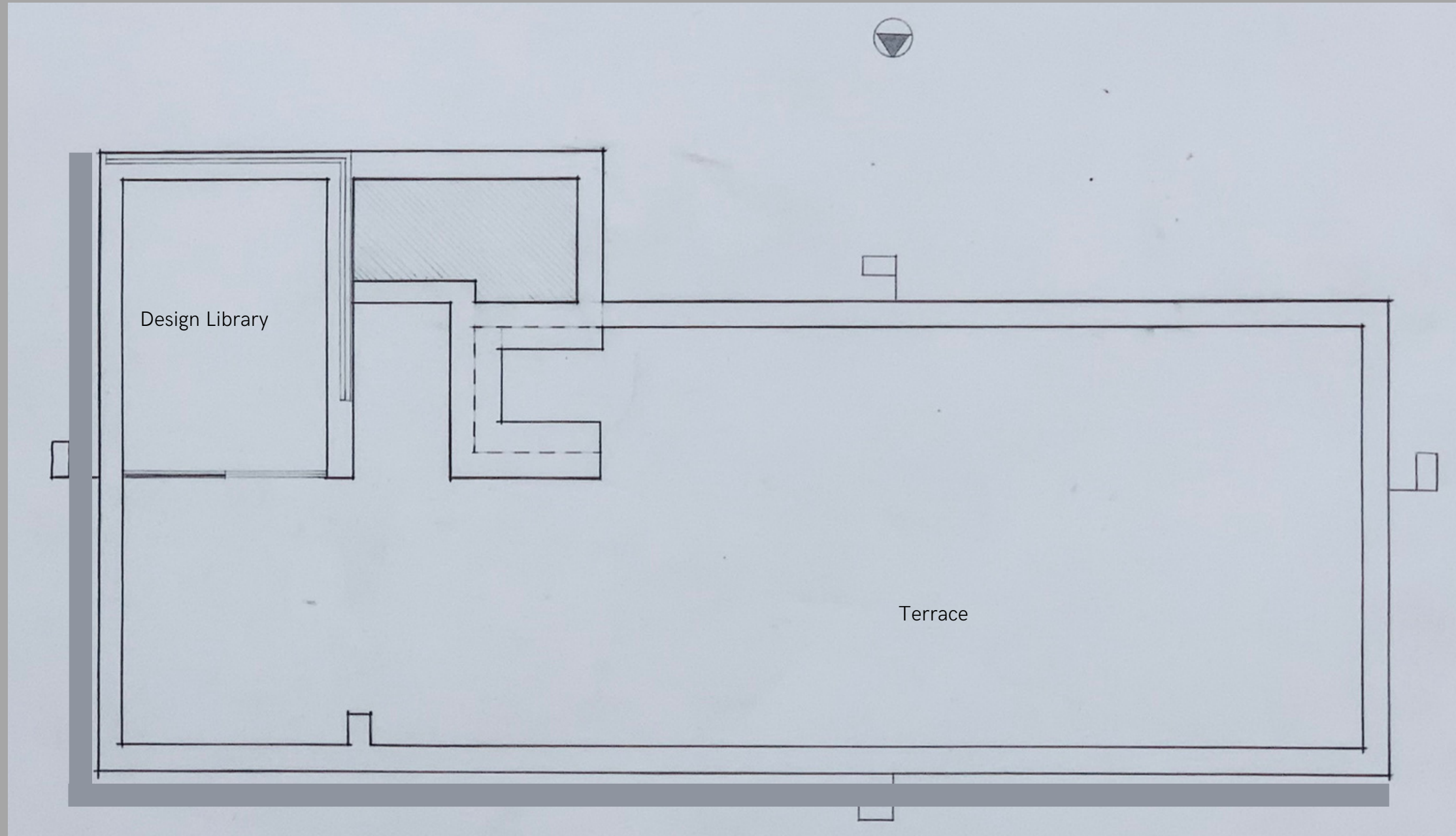
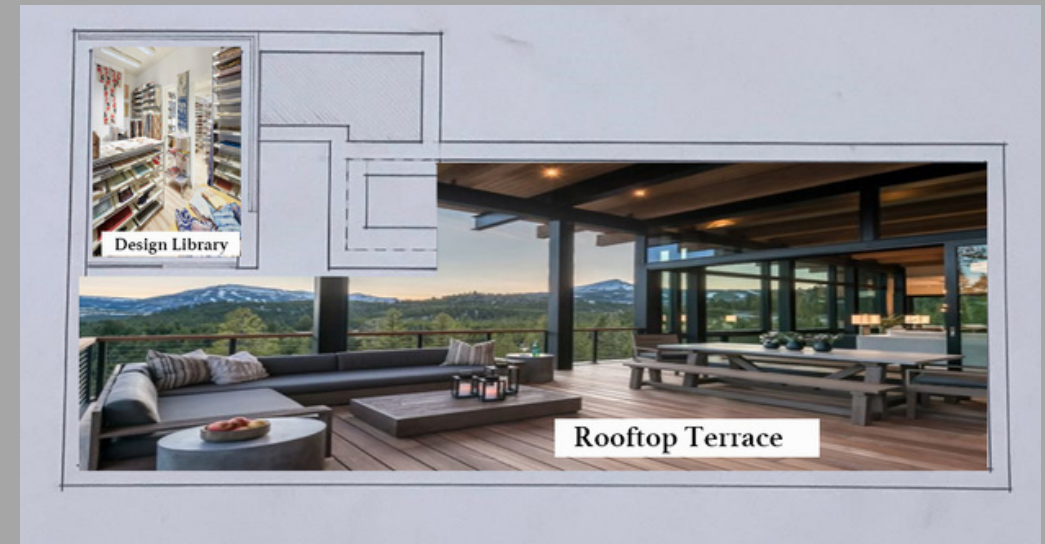


Dwelling



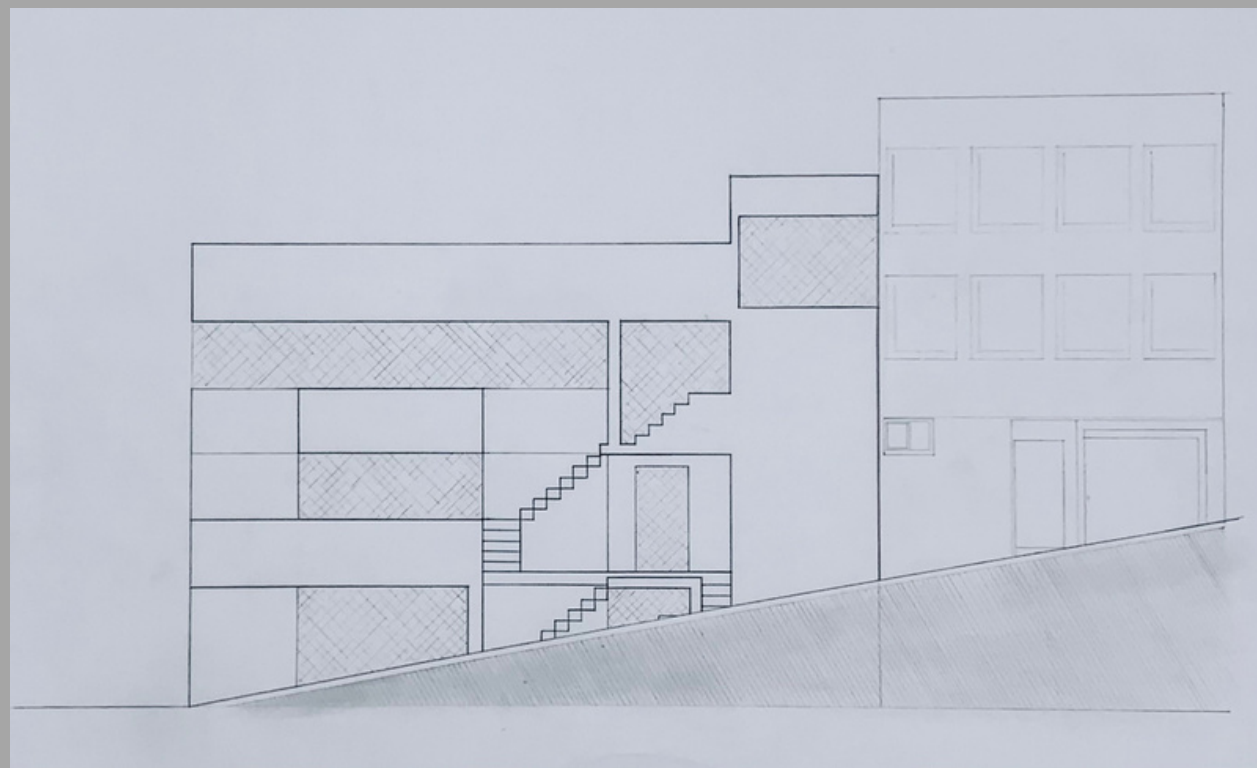
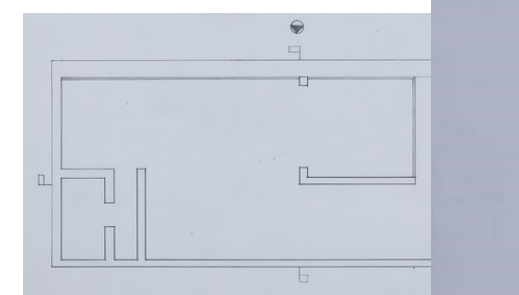
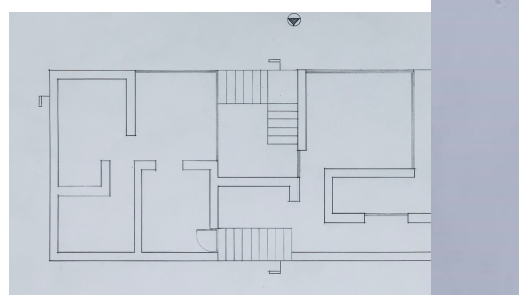
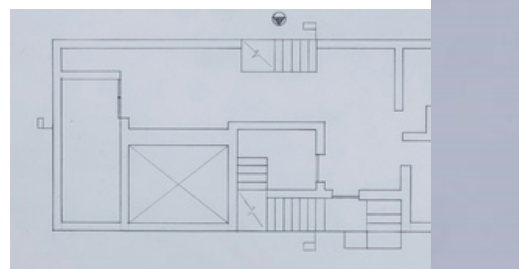
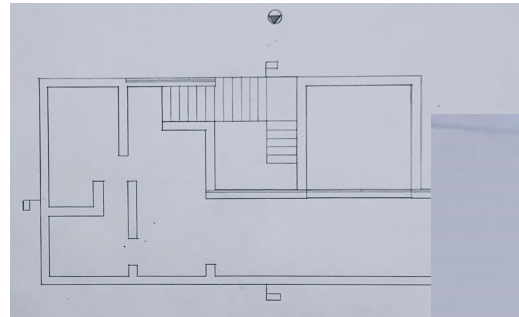
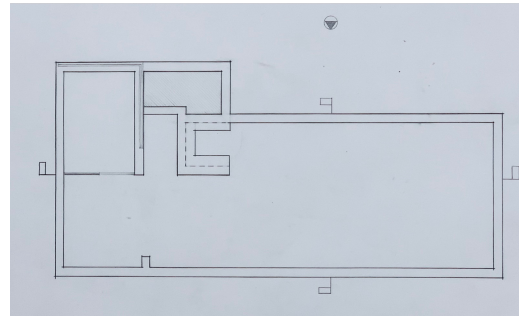
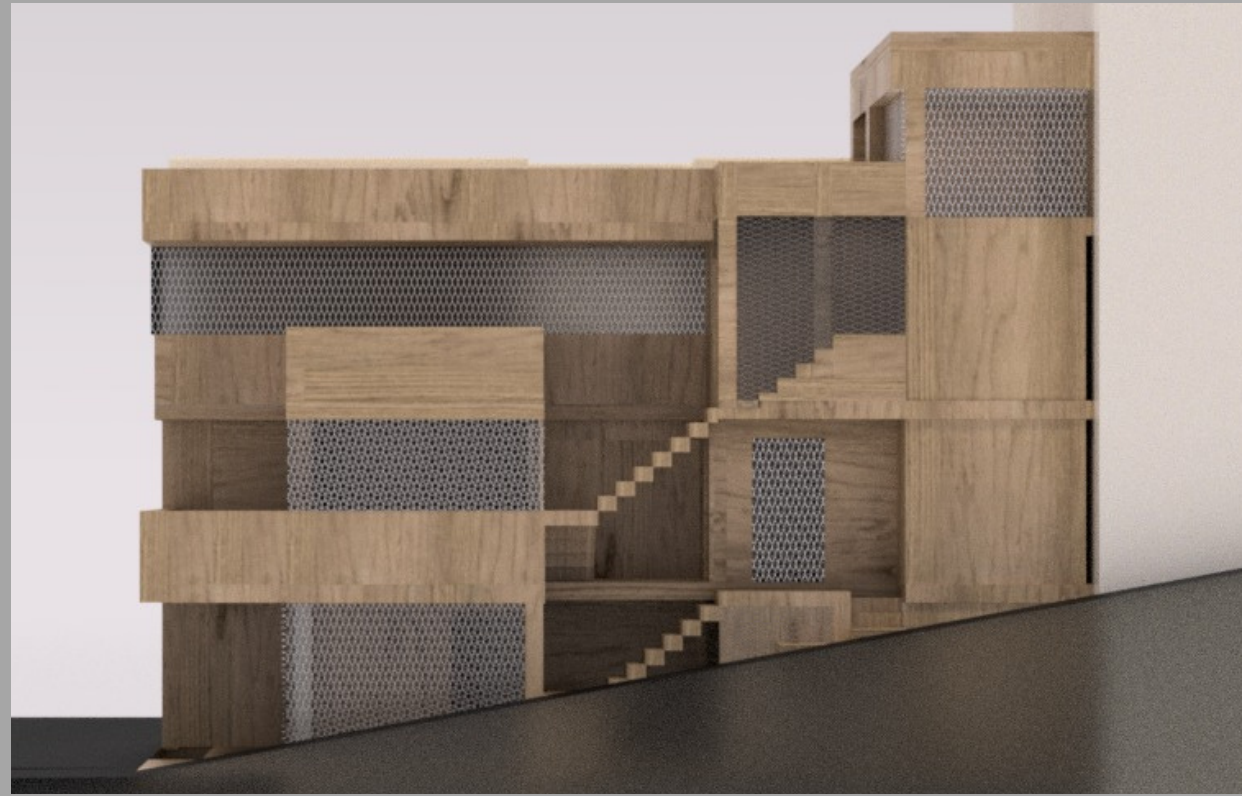
FLOOR FOUR
DESIGN LIBRARY
TERRACE

Floor 4 / Roof

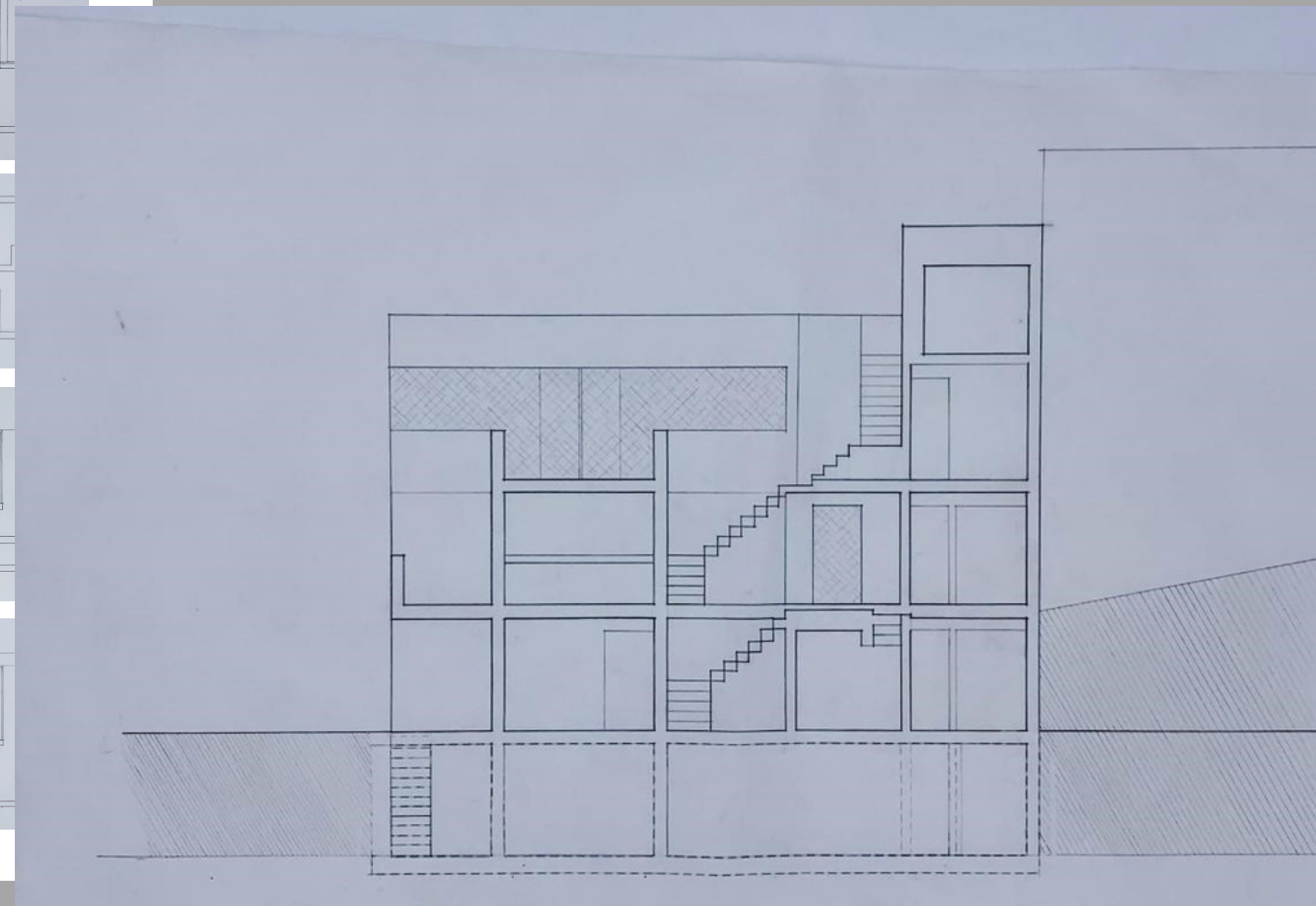


Dwelling

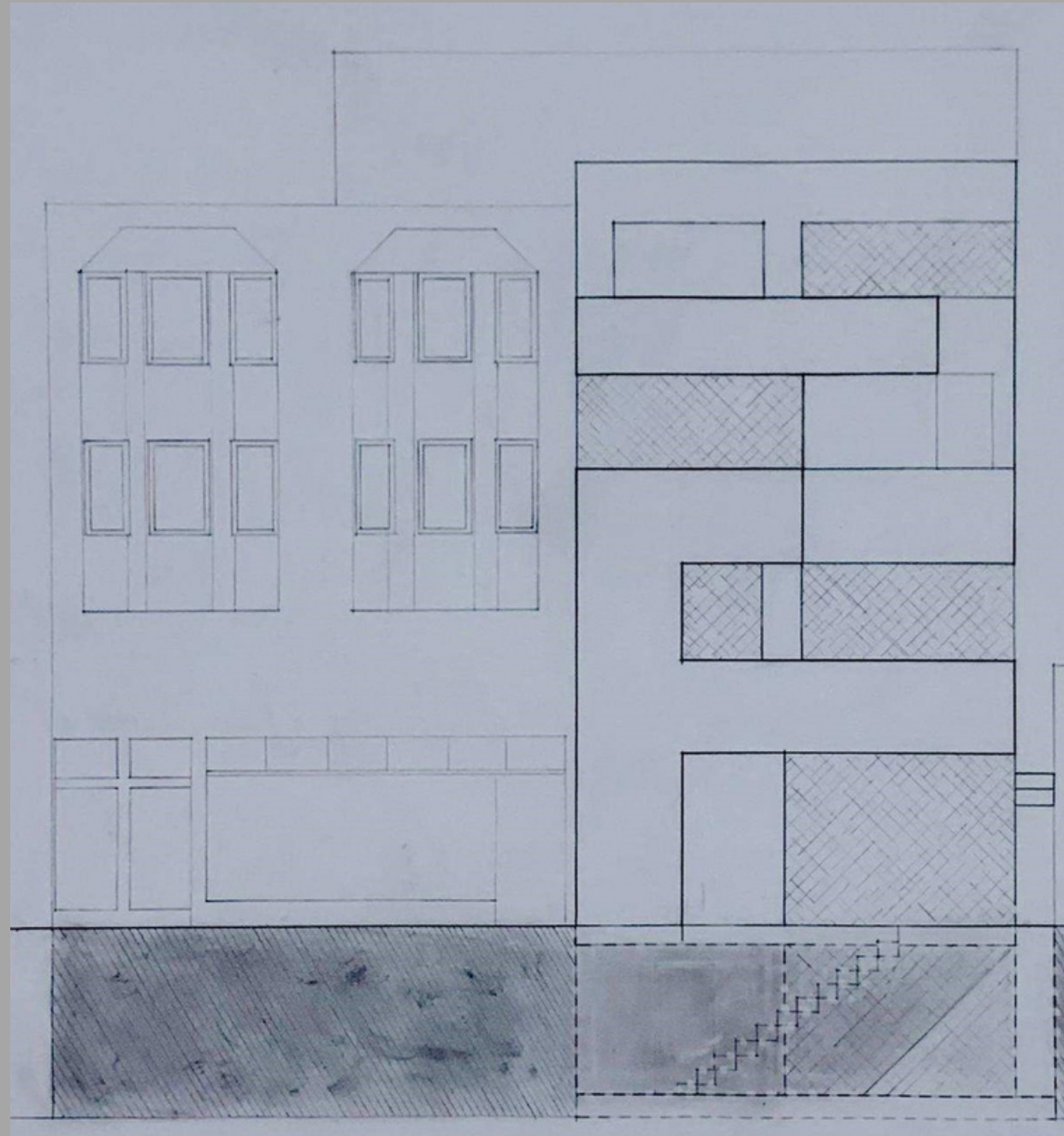
View from Nobles Alley



Longitudinal Elevation



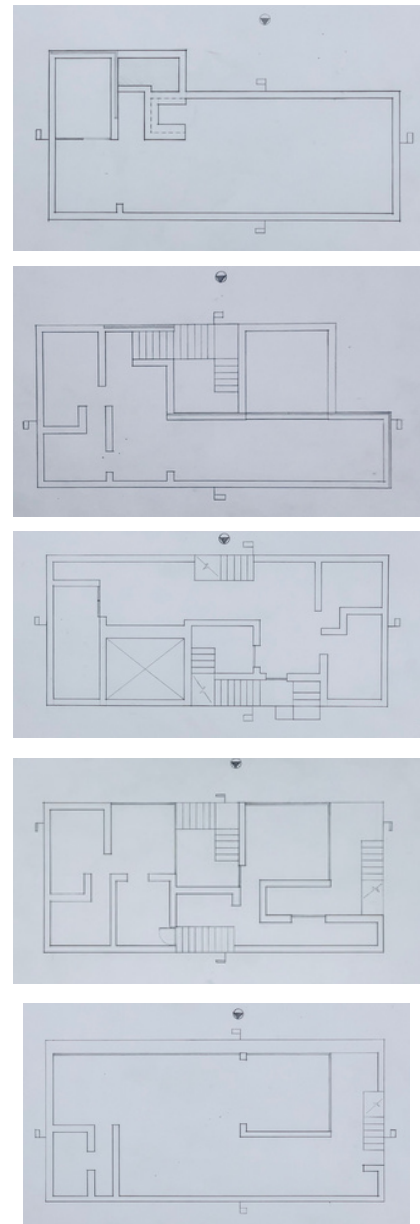
Longitudinal Section



Front Elevation

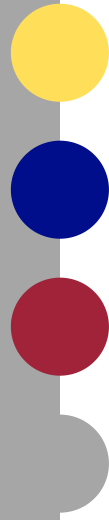


Cross Section



View from Grant Avenue

Hybrid Diagrams



FLOOR FOUR
DESIGN LIBRARY
TERRACE



FLOOR THREE
MAKER'S BEDROOM
BATHROOM
TERRACE



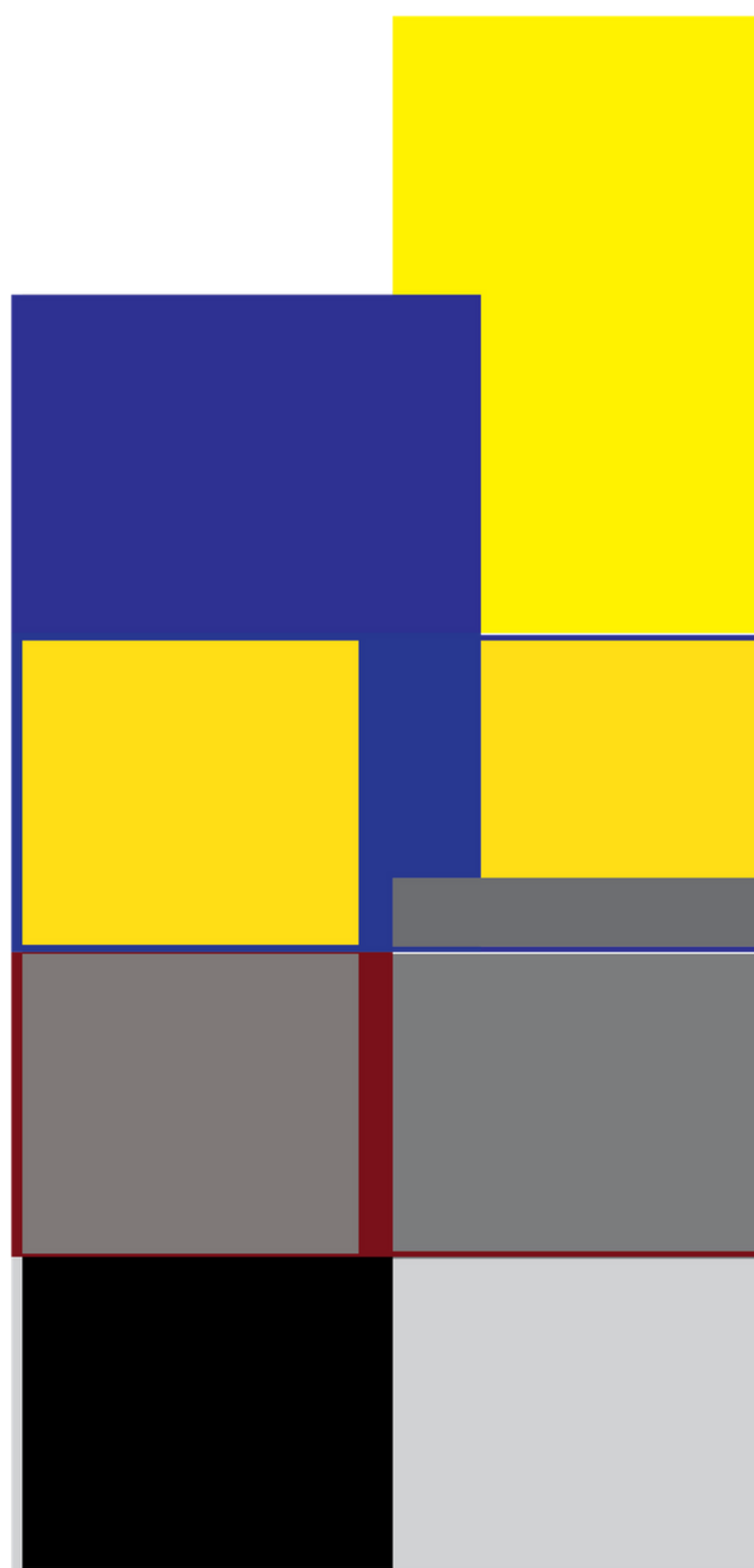
FLOOR TWO
COMMON DWELLING
KITCHEN
COLLECTOR'S BEDROOM
BATHROOM



GROUND FLOOR
EXHIBITION
RETAIL
COLLECTOR'S OFFICE
MAKER'S OFFICE
RESTROOM



BASEMENT LEVEL
Textile Productions / Makerspace
Seminar / Workshops
Restroom



PRIVATE AREAS
MAKER / COLLECTOR

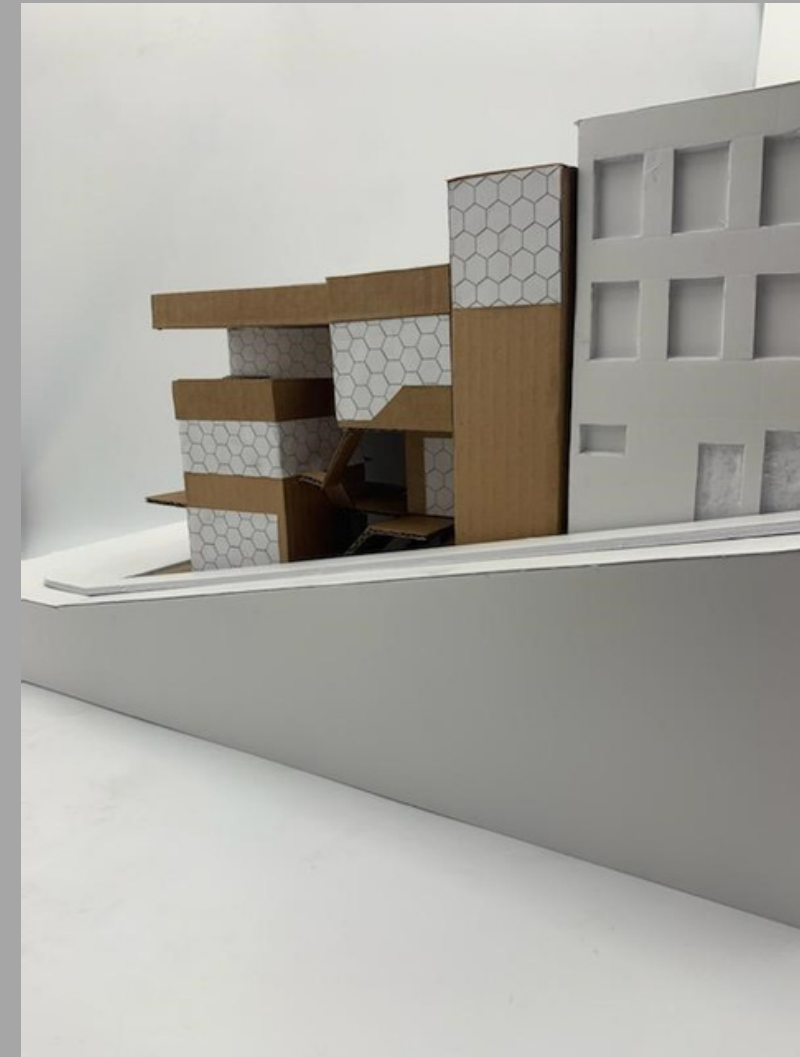
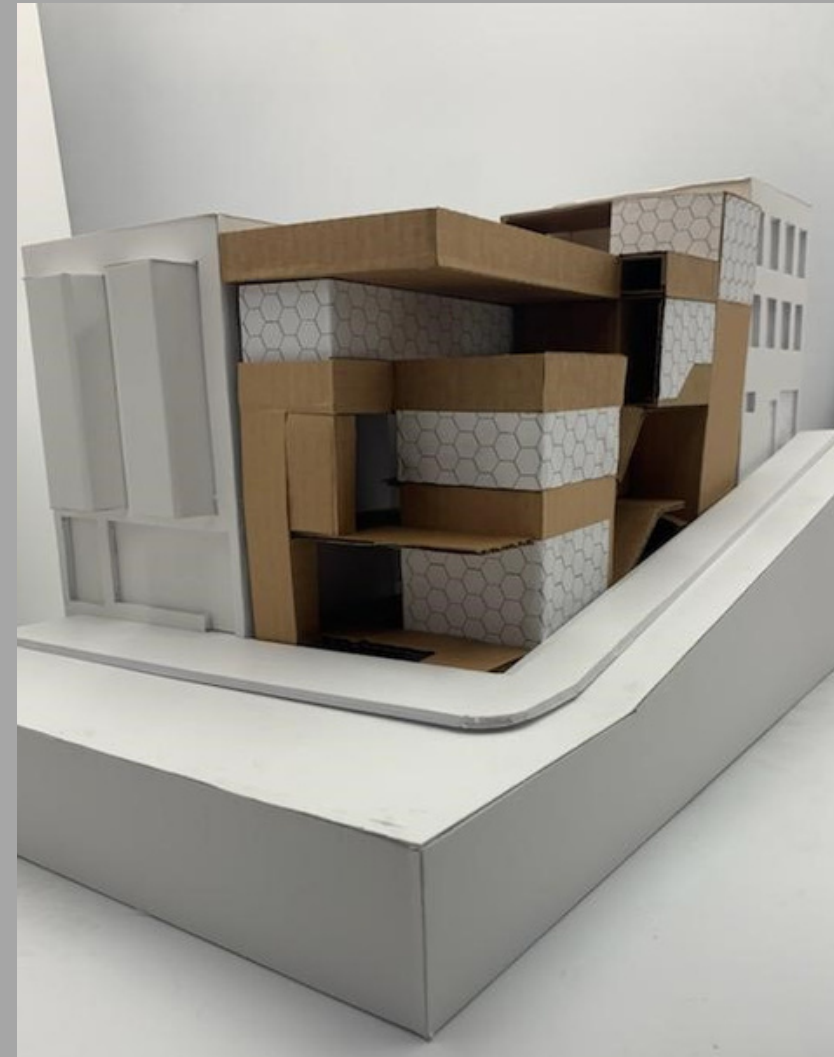
DWELLING
MAKER / COLLECTOR

**EXHIBITION / RETAIL /
OFFICE SPACES**
PUBLIC NETWORKING ATMOSPHERE

**BUSINESS / NON-PROFIT
PRODUCTIONS**
DESIGN CENTRAL / BUSINESS
COLLABORATIONS

DESIGN STUDY MODELS

PROJECT 3: HYBRID BUILDING



Proposed Construction Material:

Wood with Glass Partitions / Sheetrock (Model: Chipboard, Acrylic, Foam Board)

SKETCH PERSPECTIVE VIGNETTES

PROJECT 3: HYBRID BUILDING

