



ACADEMY *of* ART UNIVERSITY®

FOUNDED IN SAN FRANCISCO 1929 BY ARTISTS FOR ARTISTS

School of
Architecture

Student Work Archive
ARH 170 - Fall 2020

Projective Drawing & Perspective

Faculty: Aurgho Jyoti

LaRay Byrd | 05184593

Table of Contents

Module 1

1.1 [Project(s)] Project 1:
The Tool Dissected, Part 1

Module 2

2.1 [Project(s)] Project 1:
The Tool Dissected, Part 2

Module 3

3.1 [Project(s)] Project 2:
Case Study, Part 1

Module 4

4.1 [Project(s)] Project 2:
Case Study, Part 2

Module 5

5.1 [Project(s)] Project 2:
Case Study, Part 3

Module 6

6.1 [Midterm Project] Project 3:
Axonometric Drawing, Part 1

Module 7

7.1 [Midterm Project] Project 3:
Axonometric Drawing, Part 2

Module 8

8.1 [Project(s)] Project 4:
Two-Point Perspective, Part 1

Module 9

9.1 [Project(s)] Project 4:
Two-Point Perspective, Part 2

Module 10

10.1 [Project(s)] Project 4:
Two-Point Perspective, Part 3

Module 11

11.1 [Project(s)] Project 5:
Sectional One-Point Perspective Drawing, Part 1

Module 12

12.1 [Project(s)] Project 5:
Sectional One-Point Perspective Drawing, Part 2

Module 13

13.1 [Final Project] Project 6:
Final Touches / Putting It All Together, Part 1

Module 14

14.1 [Final Project] Project 6:
Final Touches / Putting It All Together, Part 2

Module 15

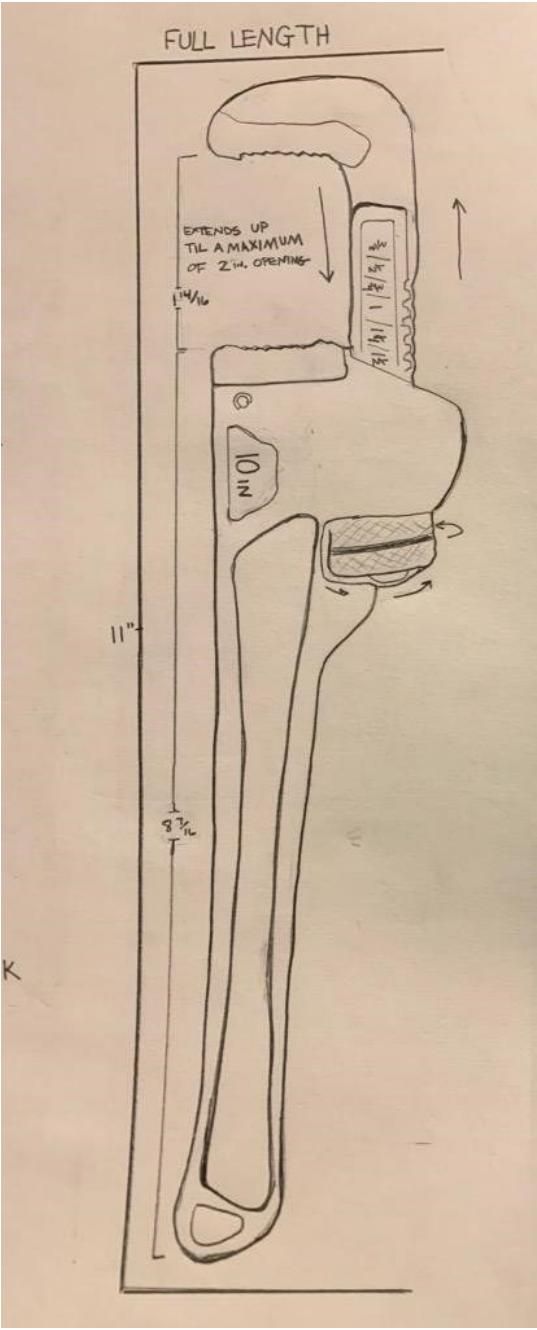
Saving your Archive File:

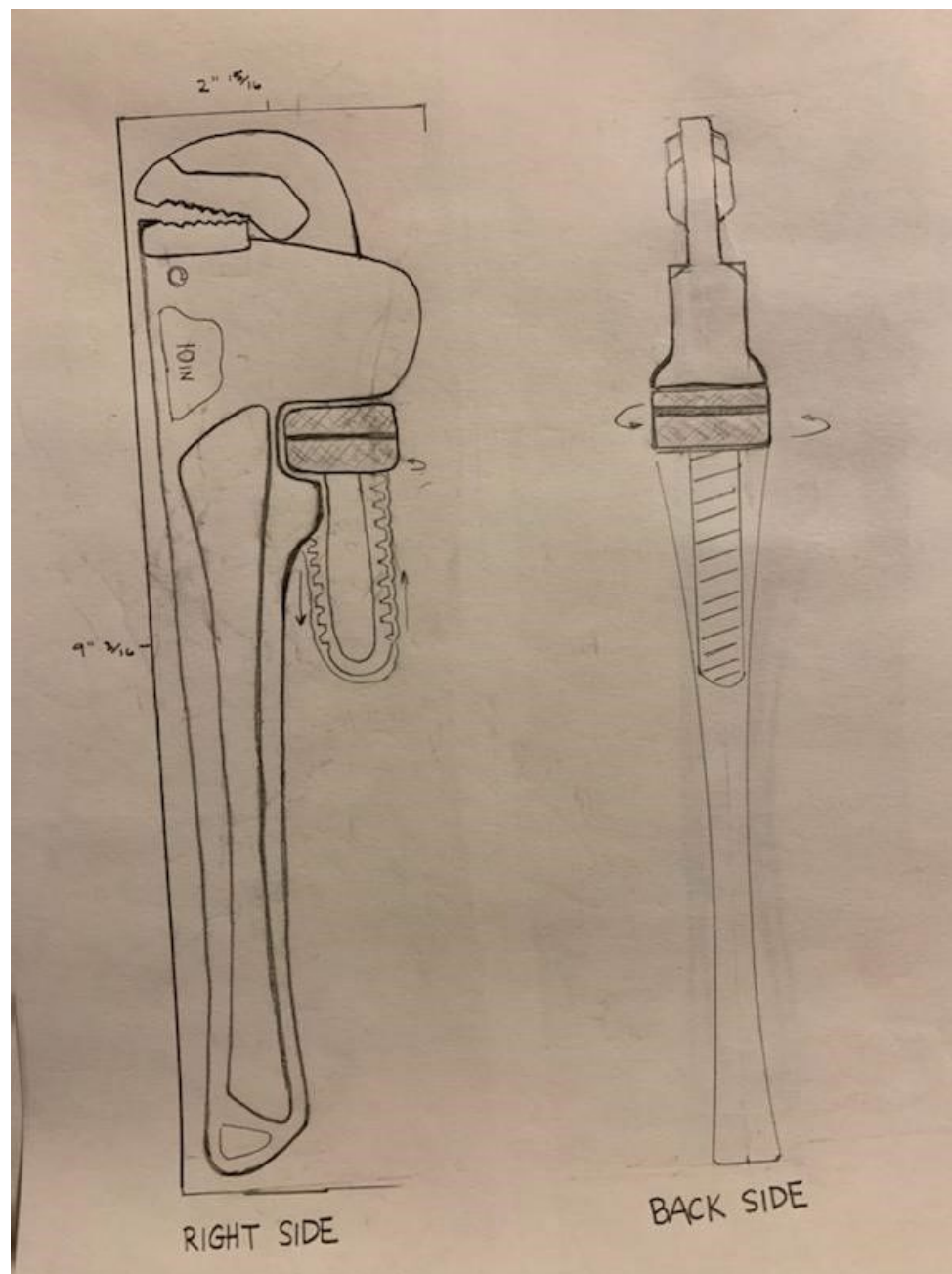
15.1 [Archive] Archive Requirement

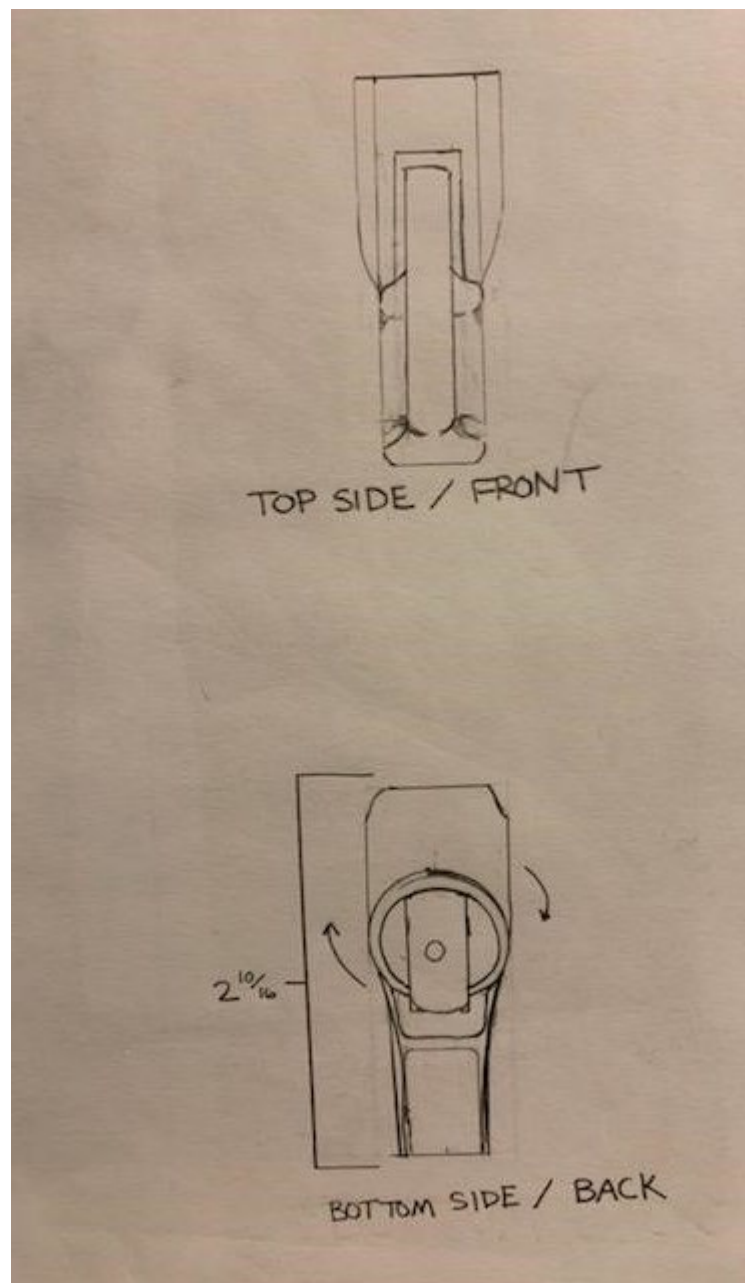


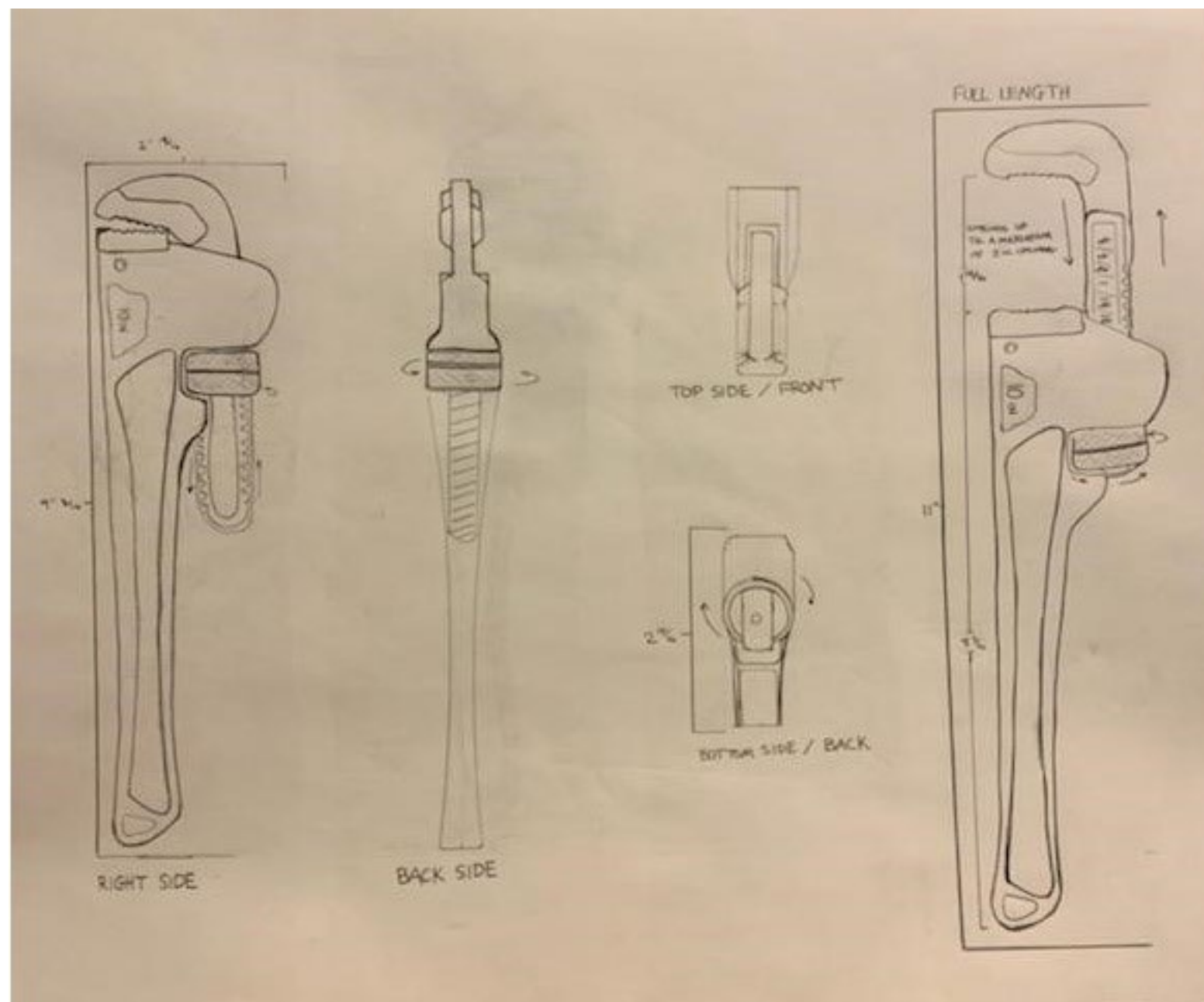
ARH 170
Assignment 1.1





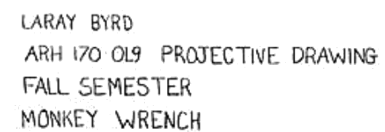


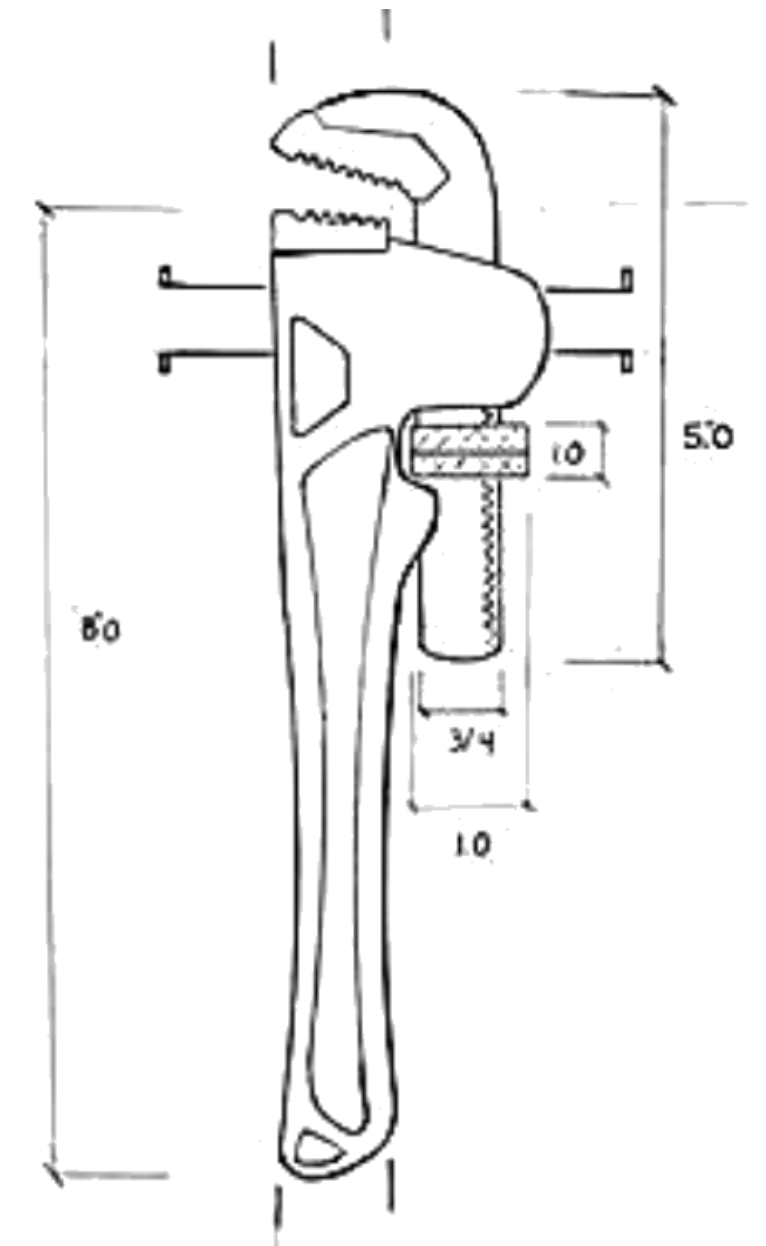


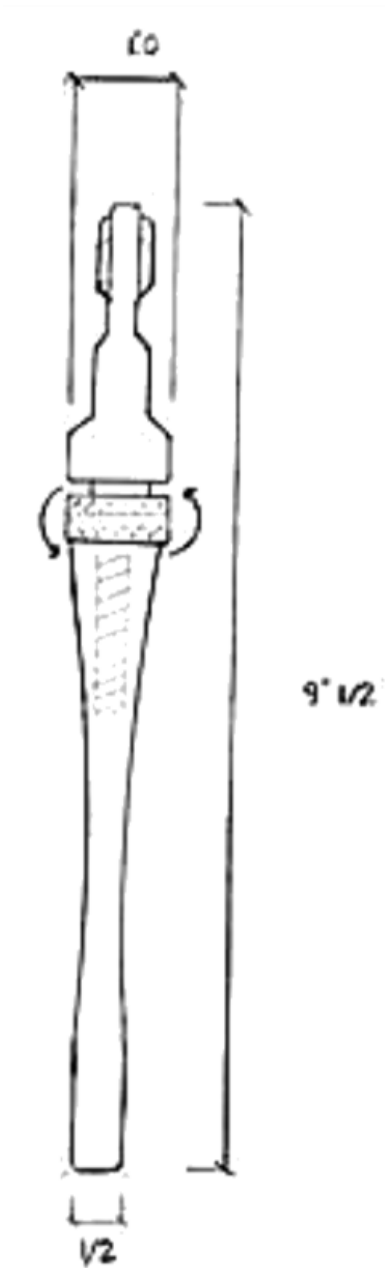


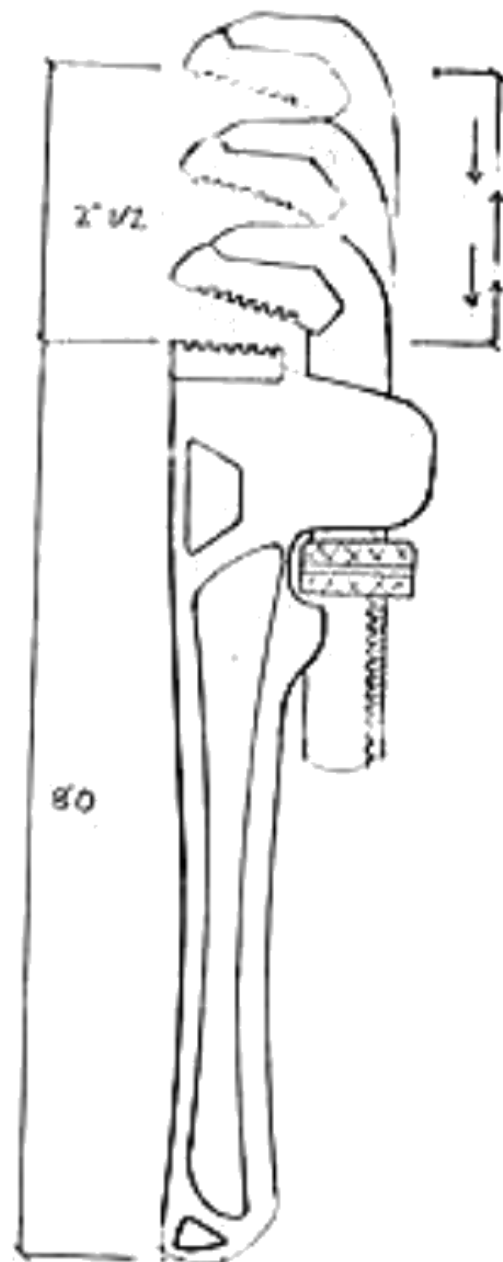
The image contains four hand-drawn sketches of a tool, likely a pry bar or similar implement, showing different perspectives:

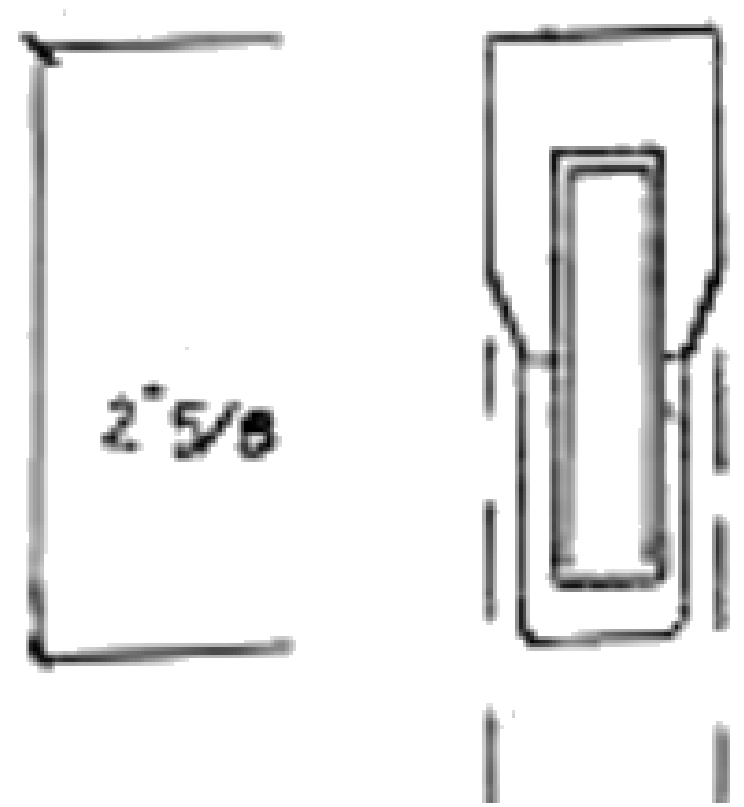
- RIGHT SIDE:** A side view of the tool. It features a long handle with a textured grip section near the head. The head has a curved, notched end. Dimensions include a 2" width at the top, a 1" width at the head, and a 1" width at the base of the handle.
- BACK SIDE:** A view from the opposite side of the head. It shows a similar handle with a textured grip section. Dimensions include a 2" width at the top and a 1" width at the base of the handle.
- TOP SIDE / FRONT:** A view from the top of the head. It shows a rectangular head with a central slot. Dimensions include a 2" width and a 1" width.
- FULL LENGTH:** A side view of the entire tool, showing the handle and head. It includes a dimension of 11" for the handle length and a 2" width for the head.

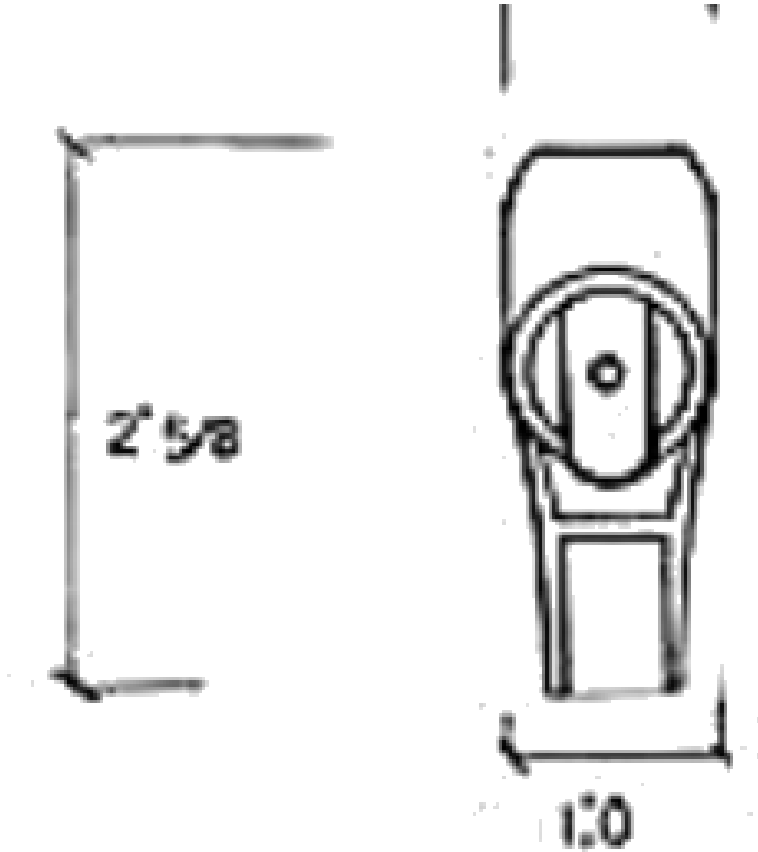






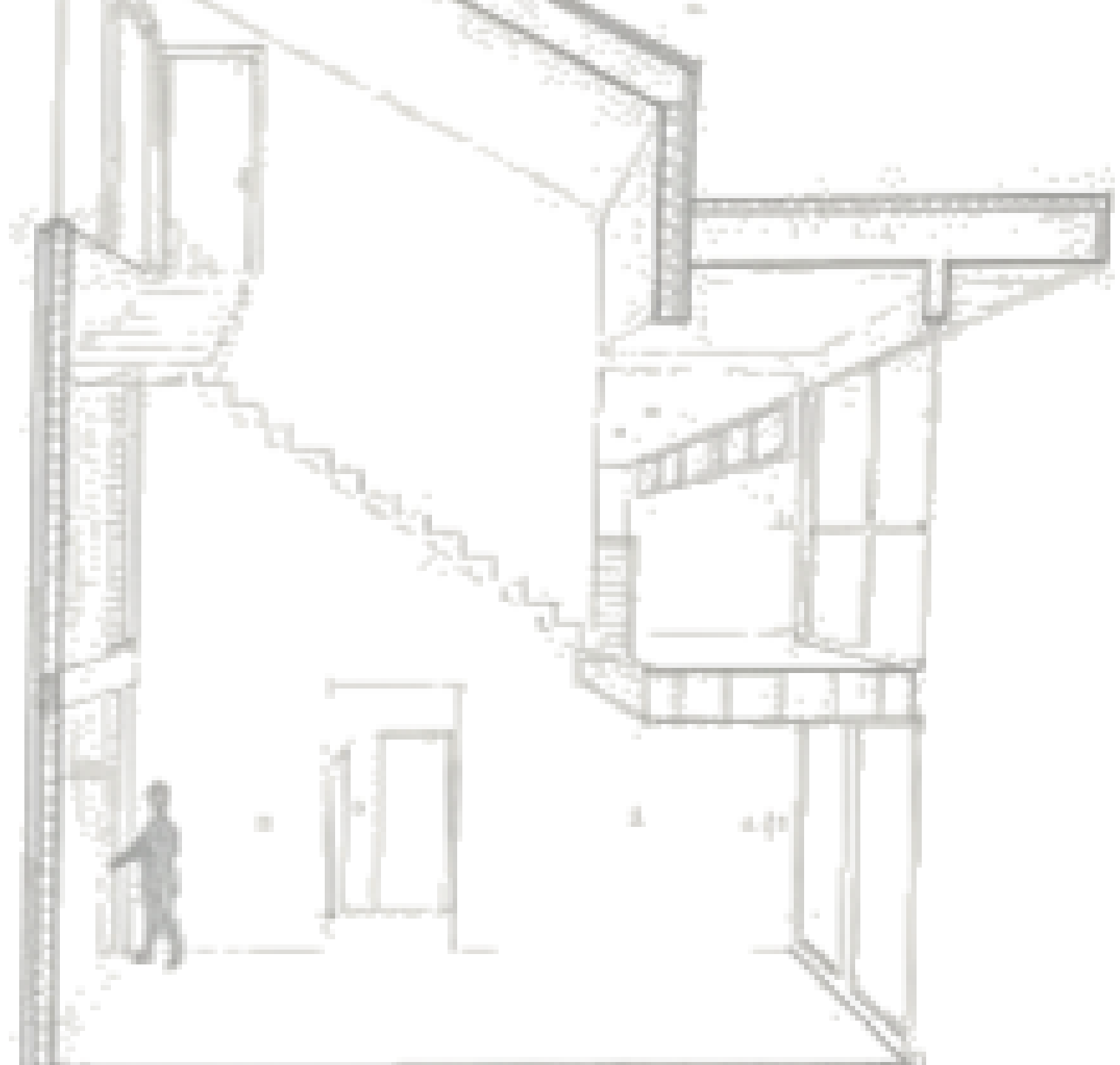


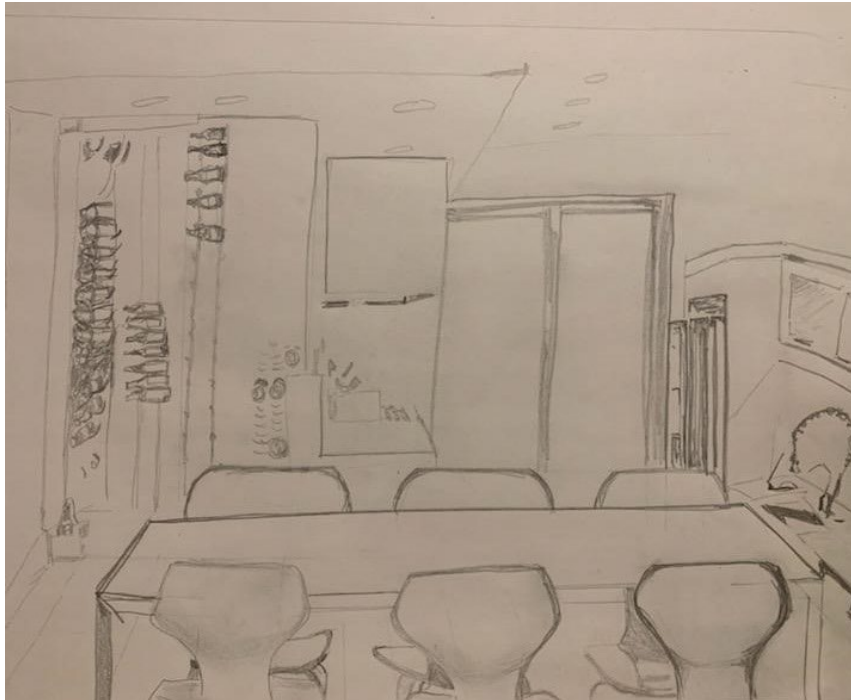
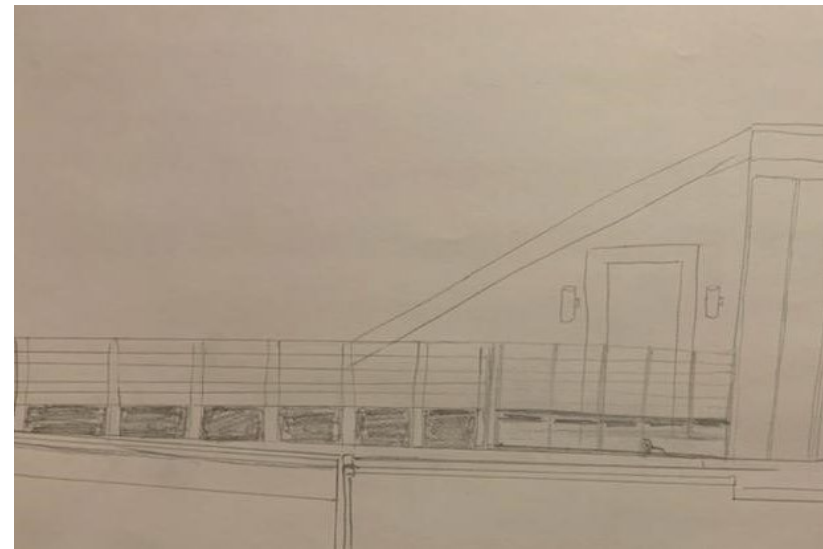


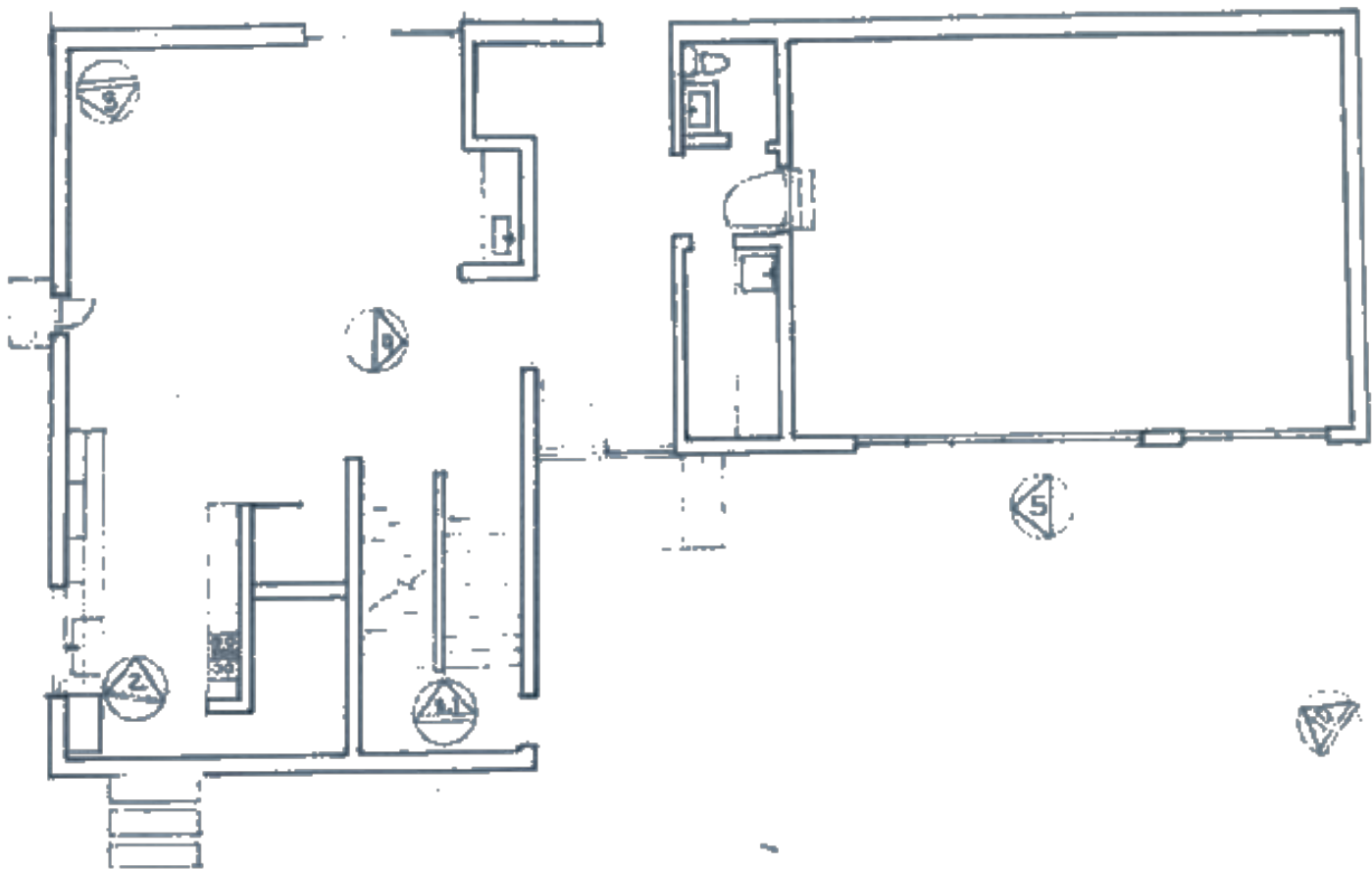


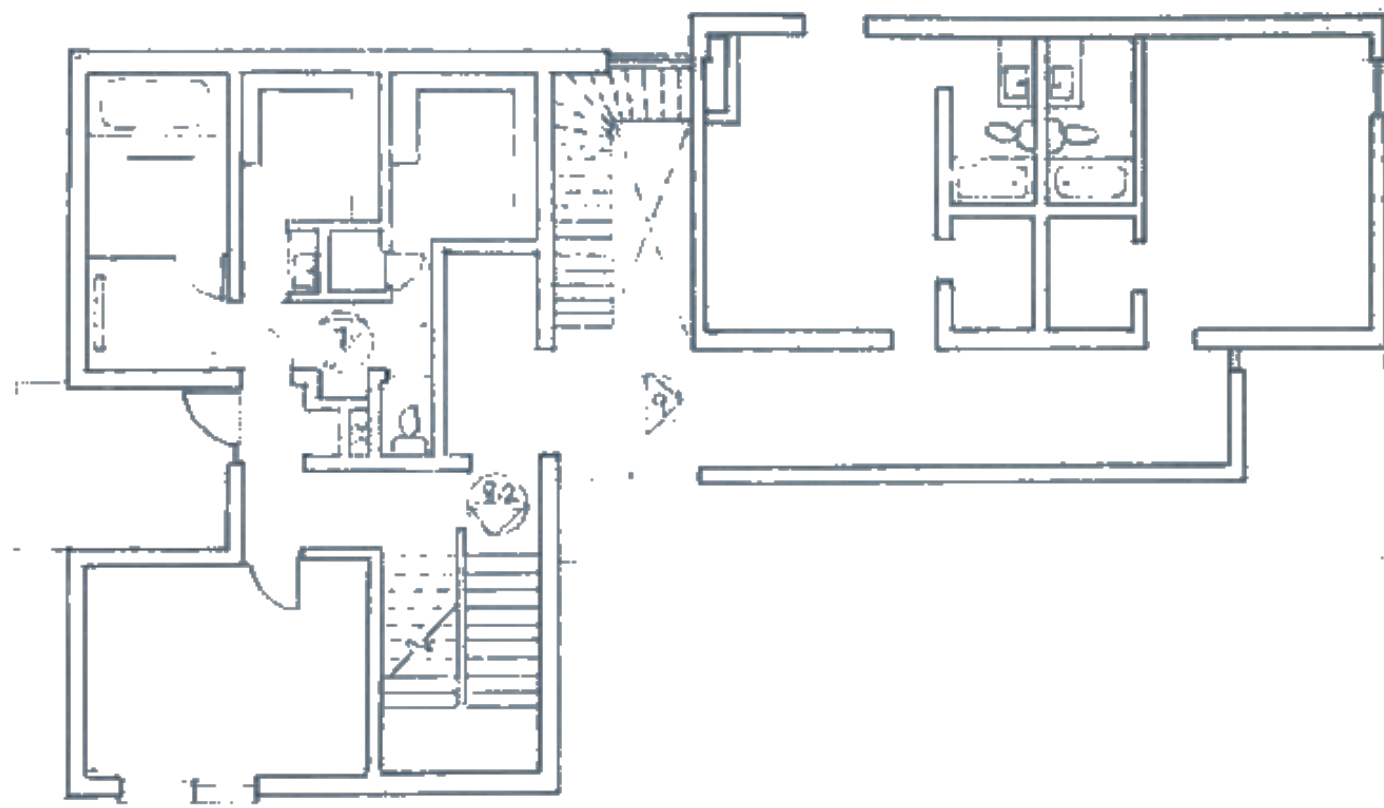
Project 2:

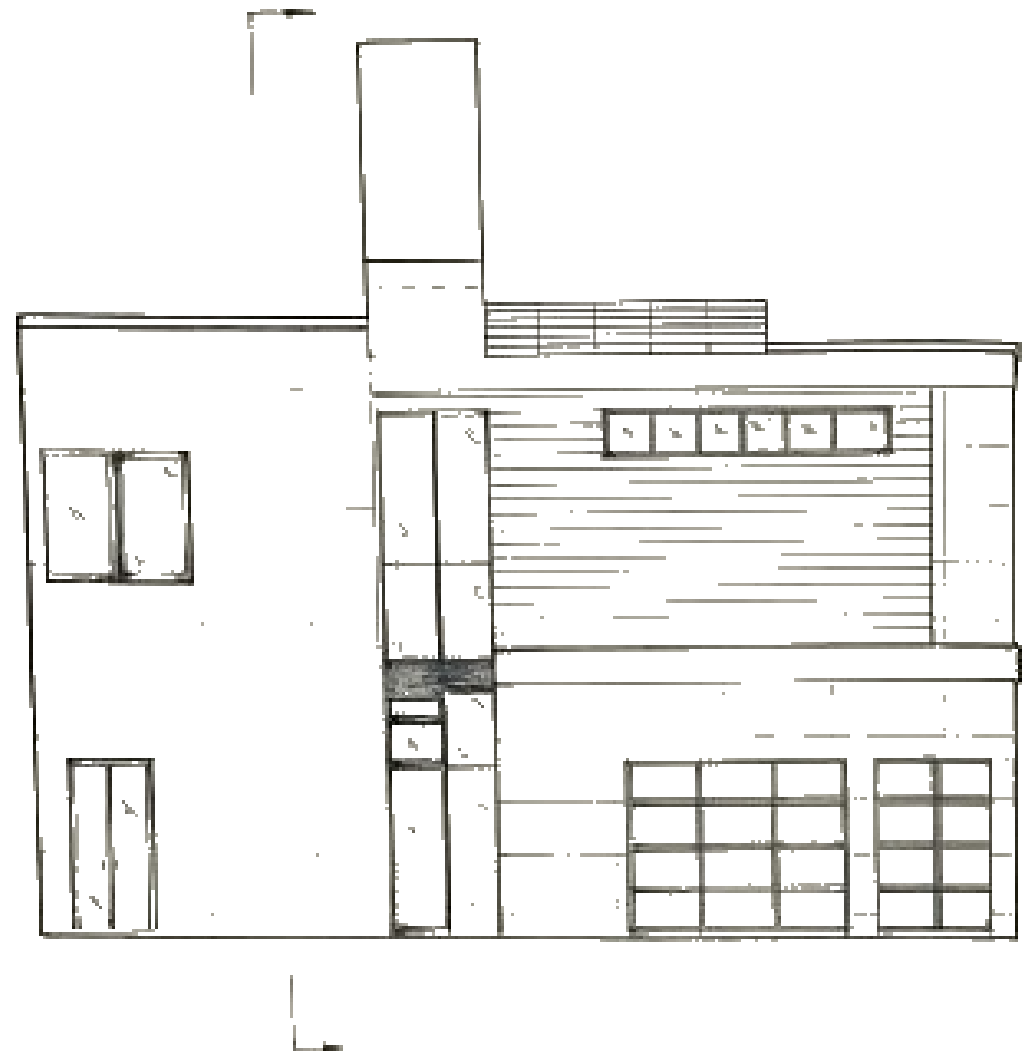
Case Study: Drawing Plan, Section, and Elevation

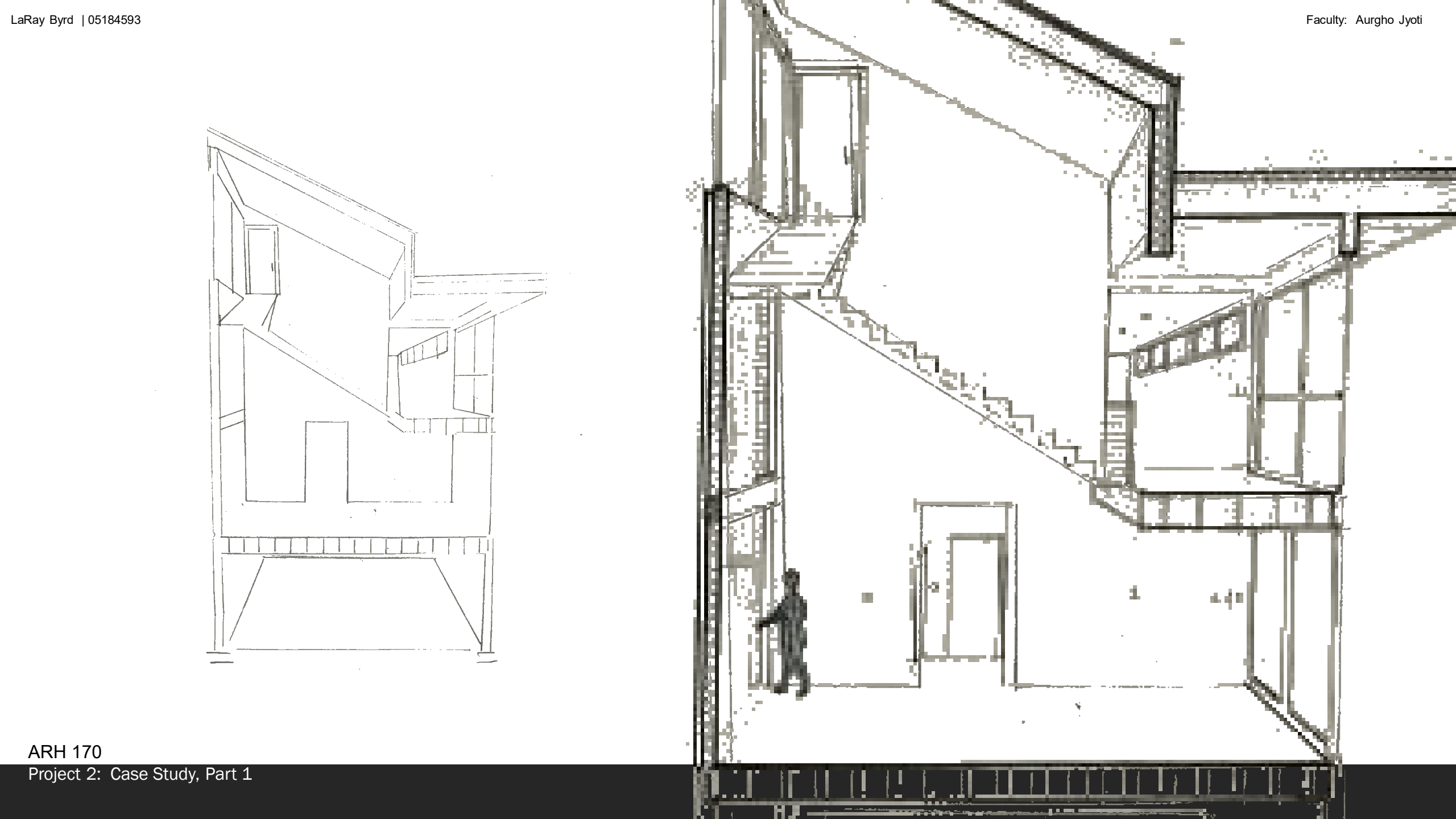


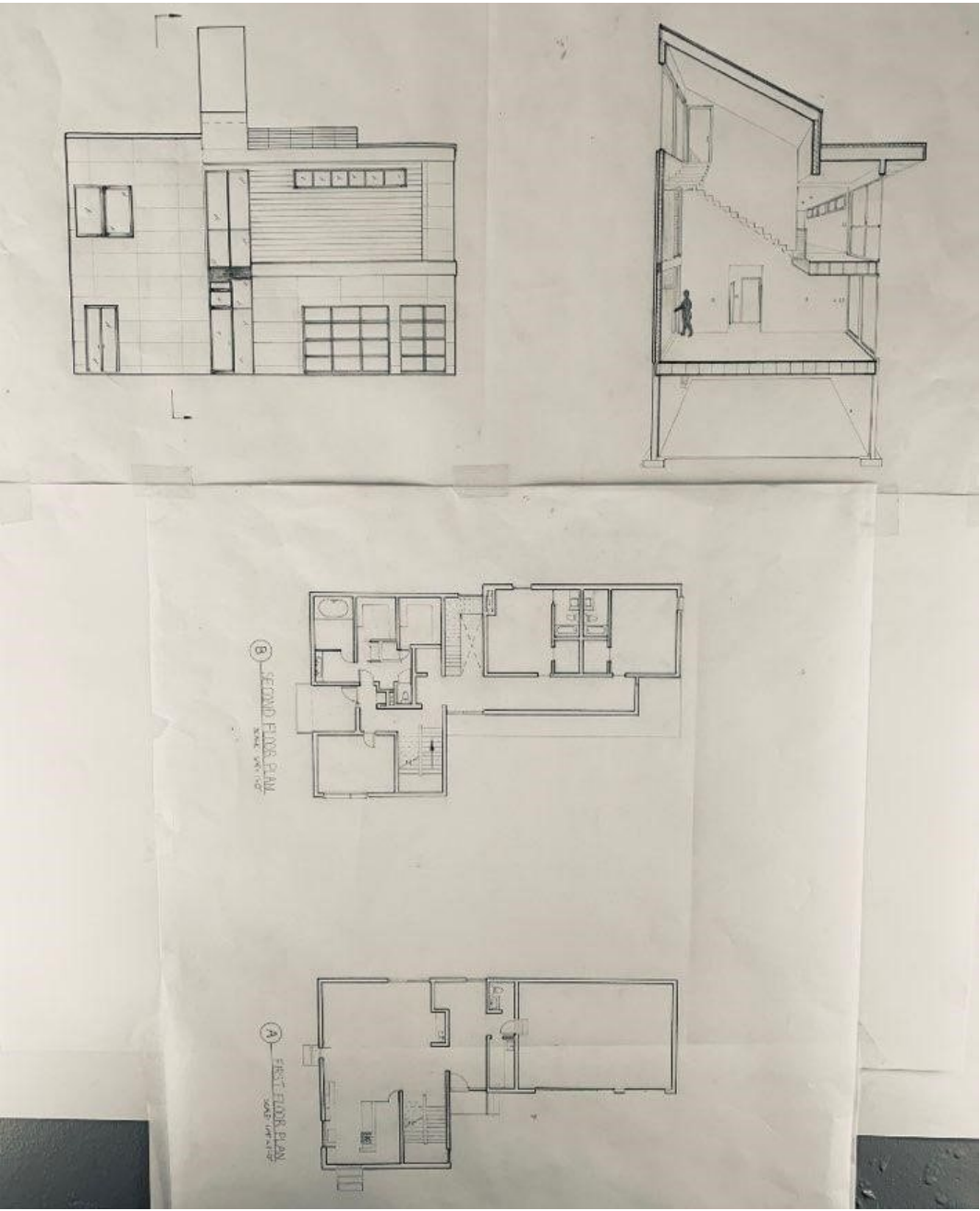






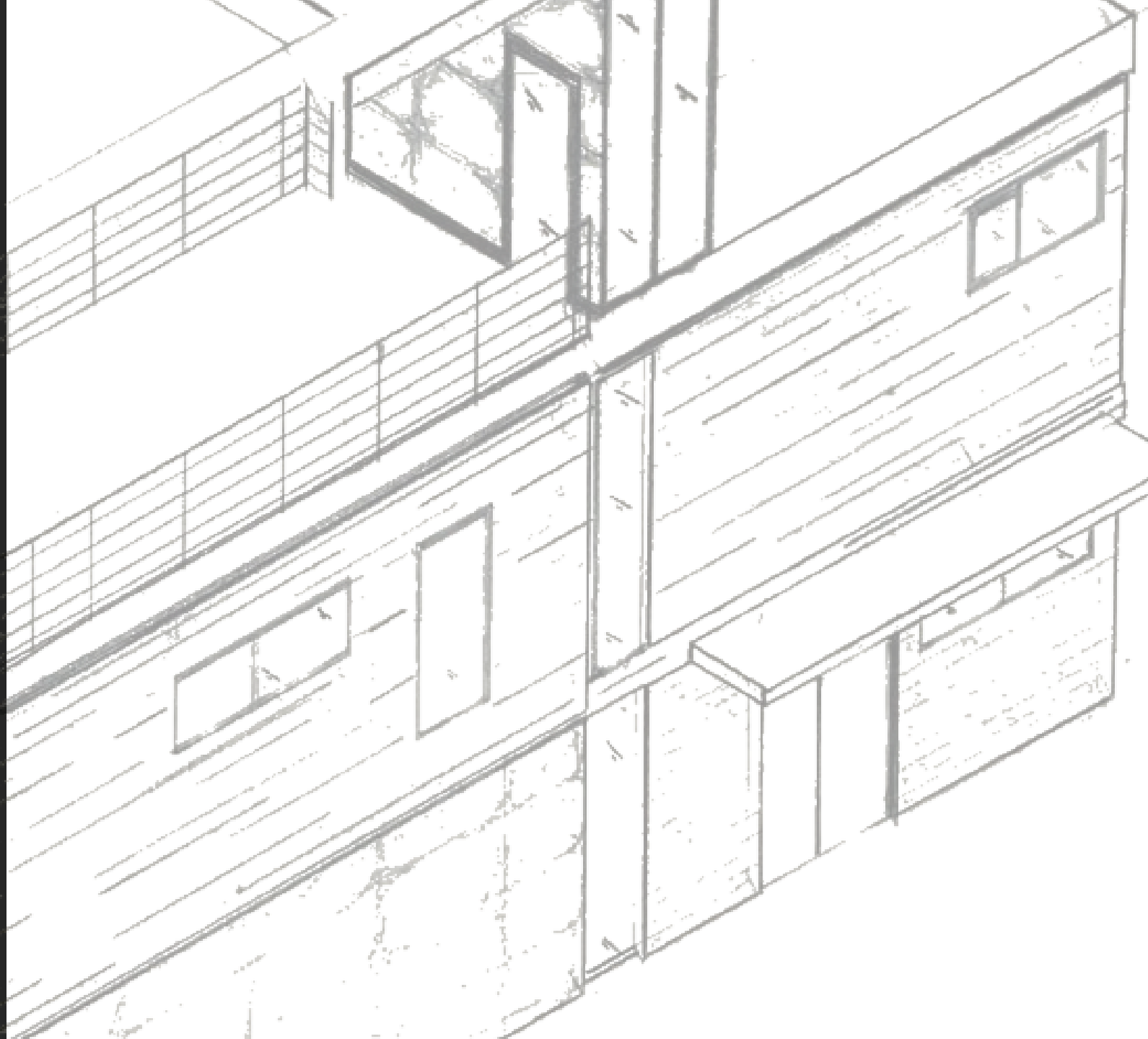


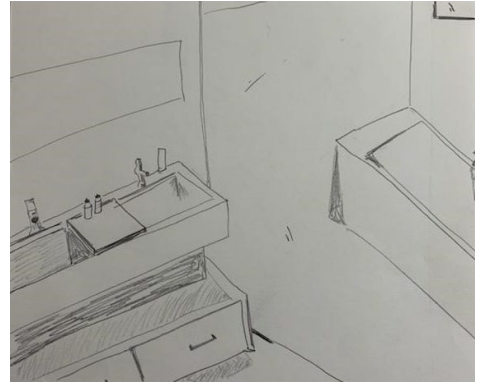
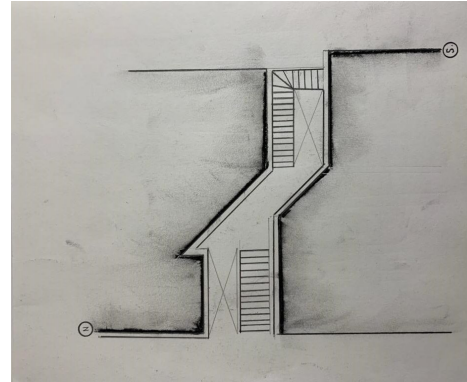
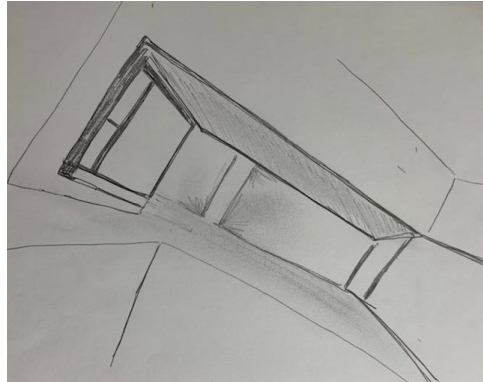
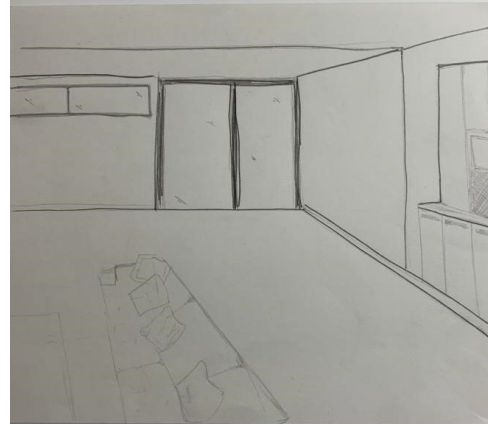
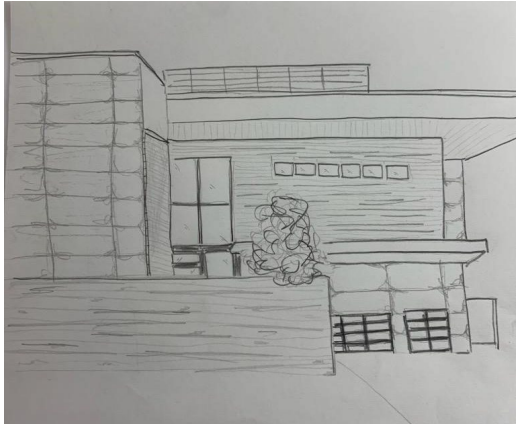
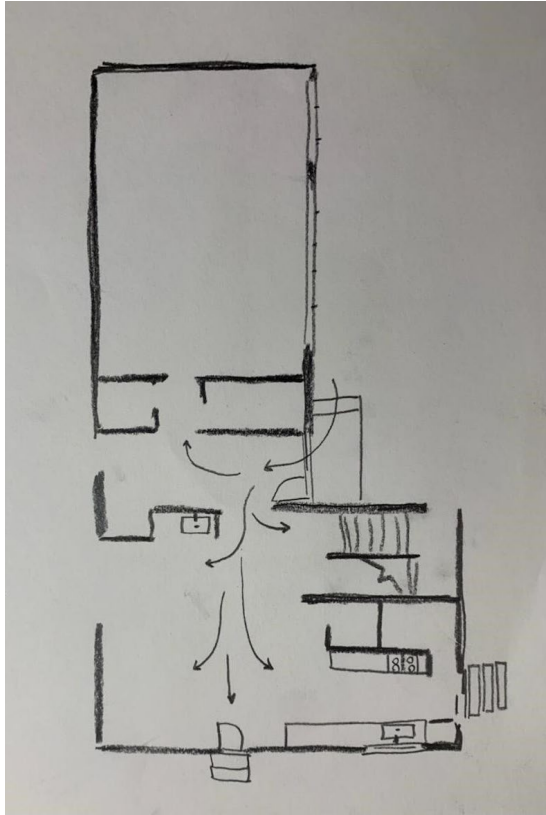


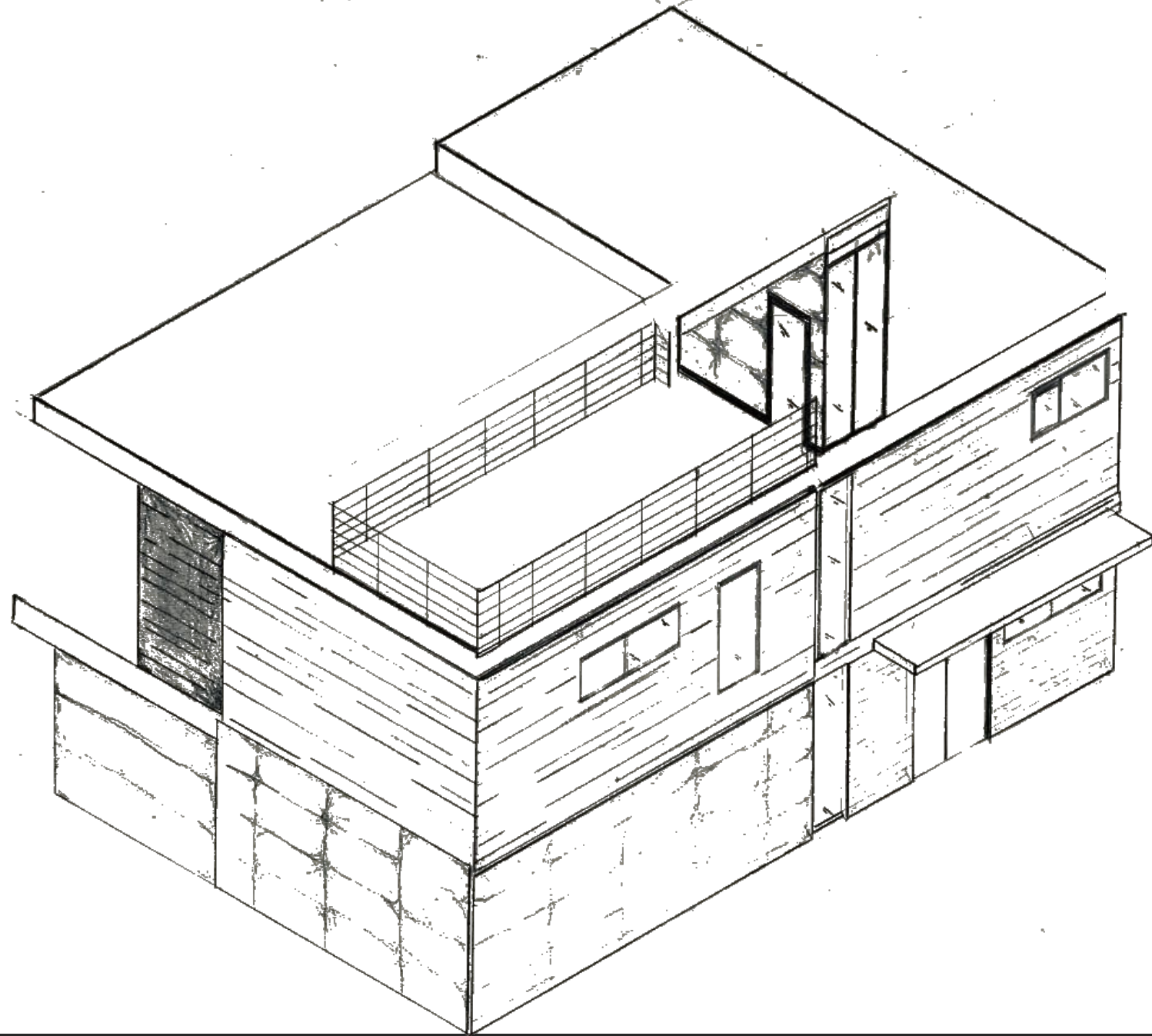


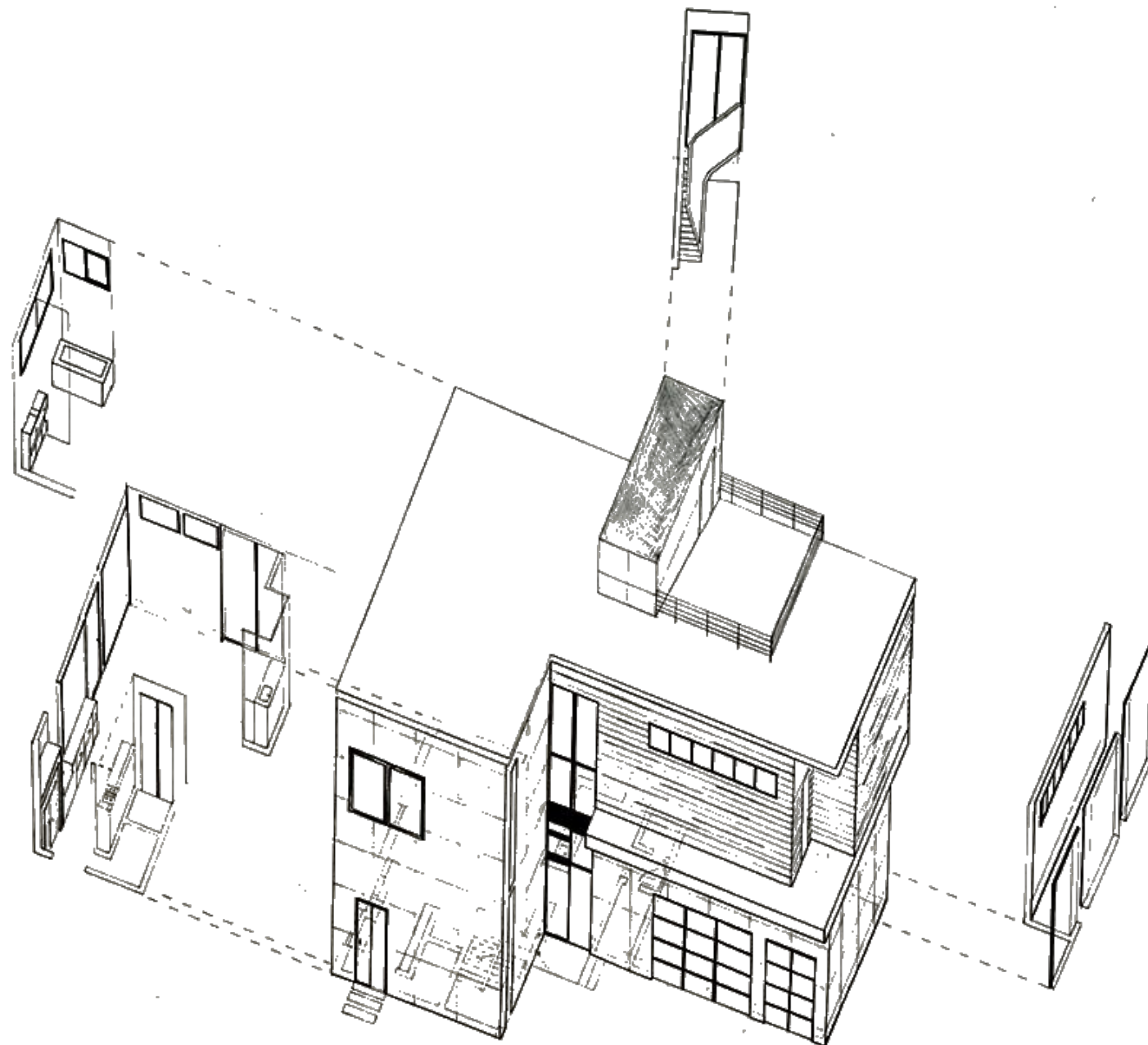
Project 3:

Axonometric Drawing



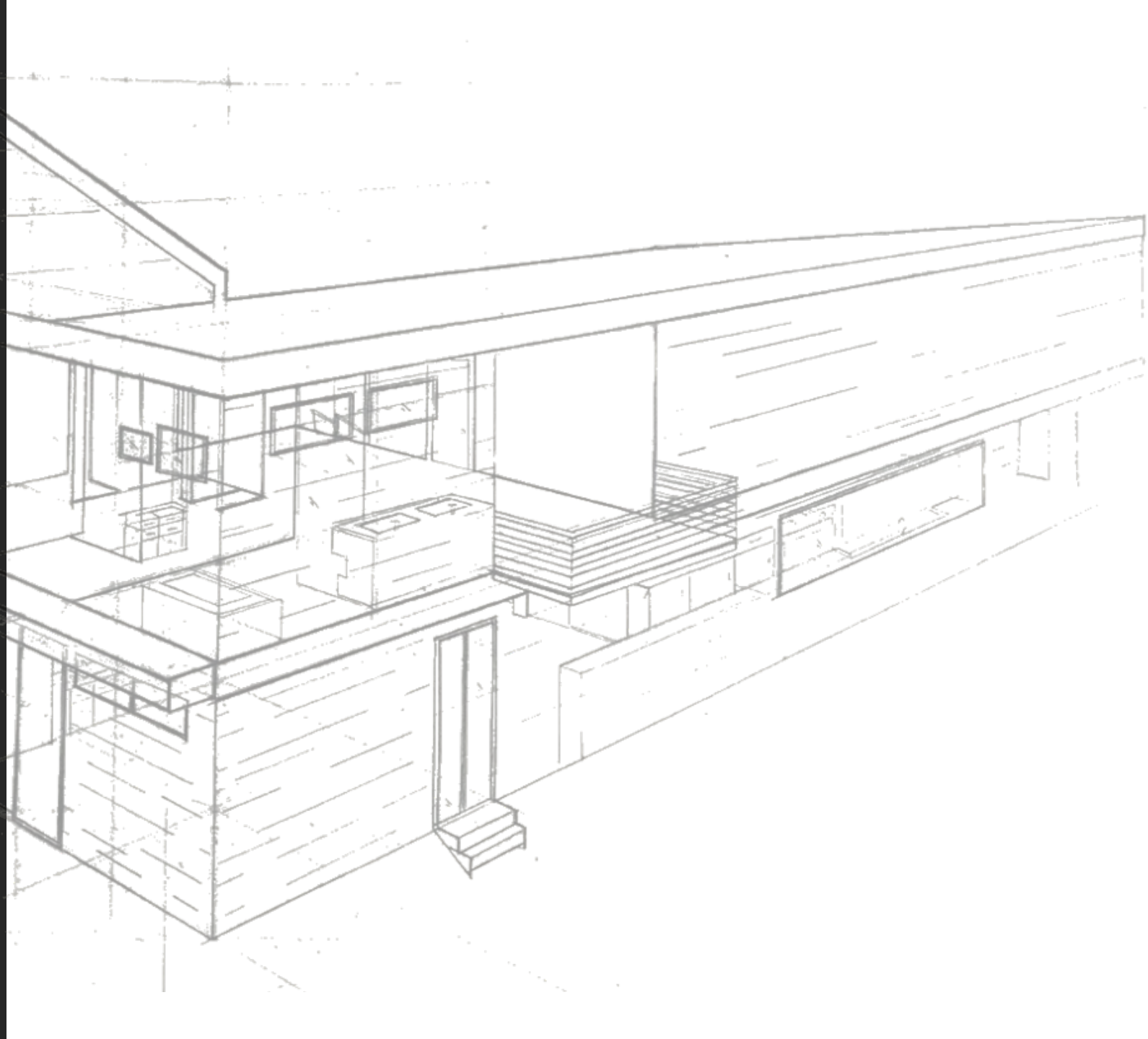


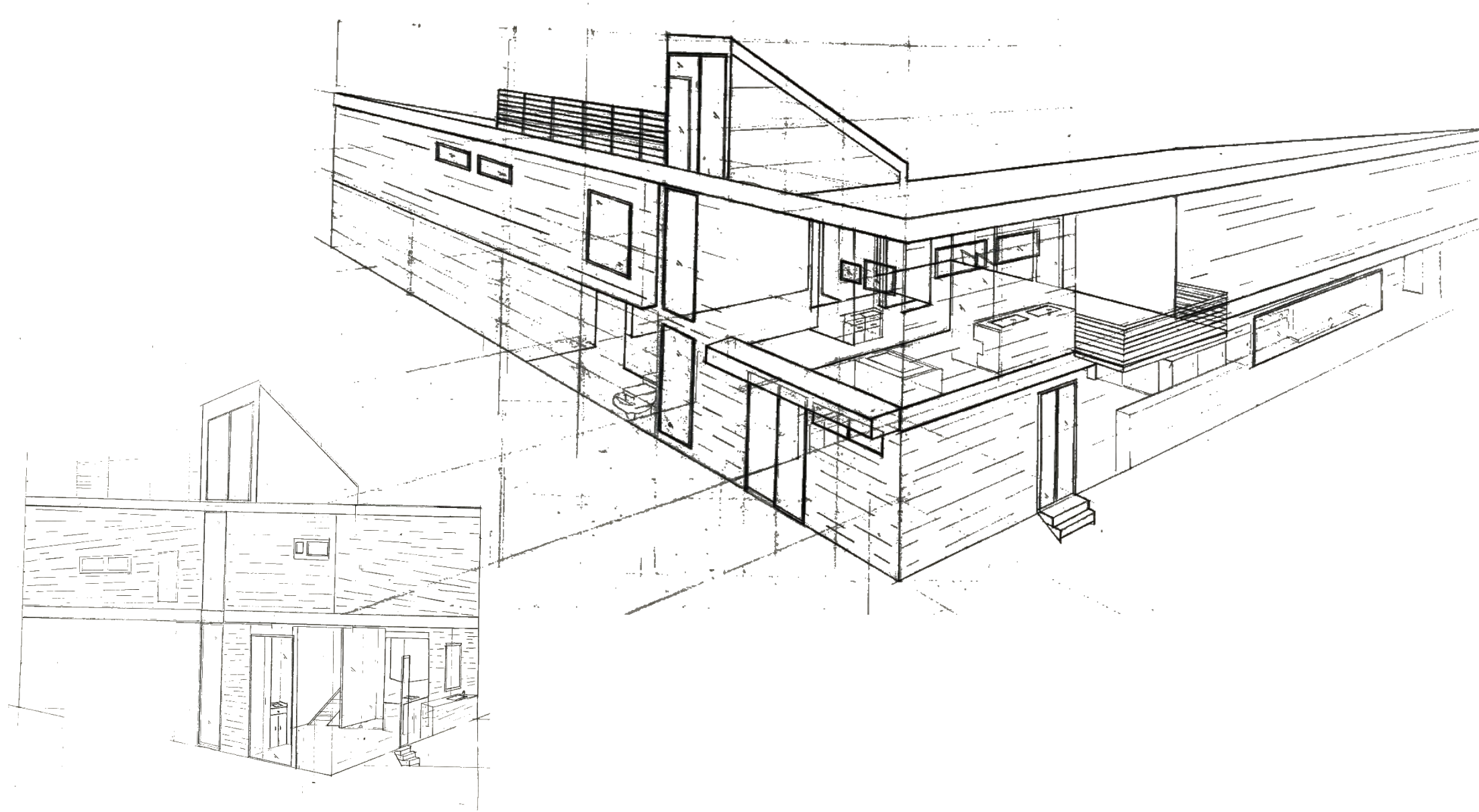




Project 4:

Two-Point Perspective

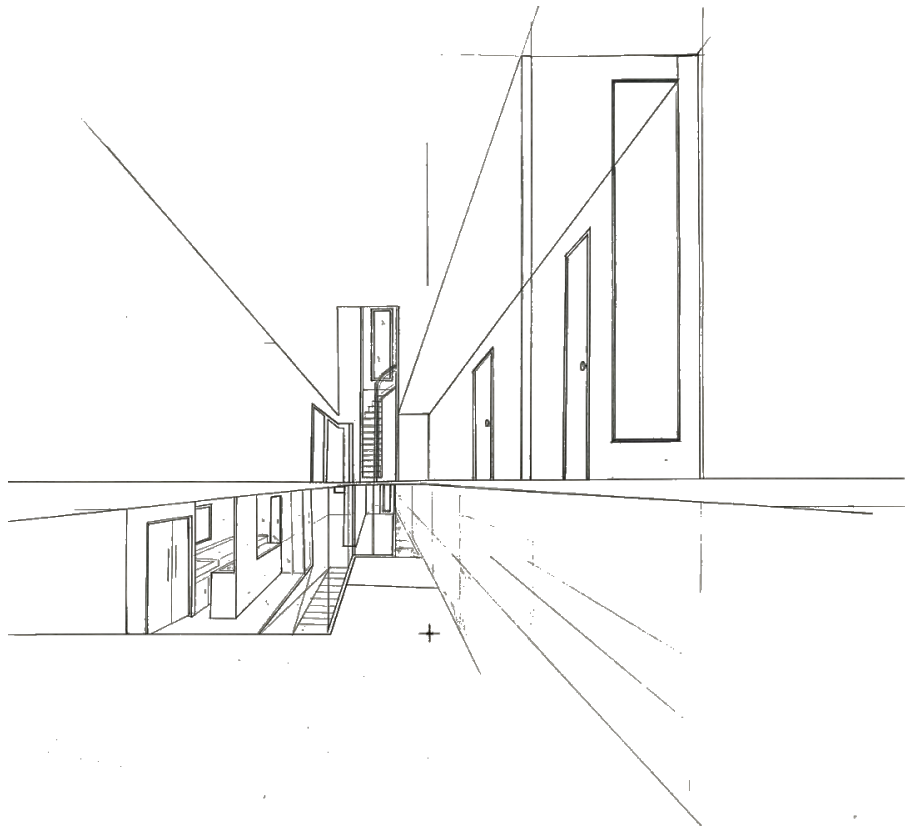




Project 5:

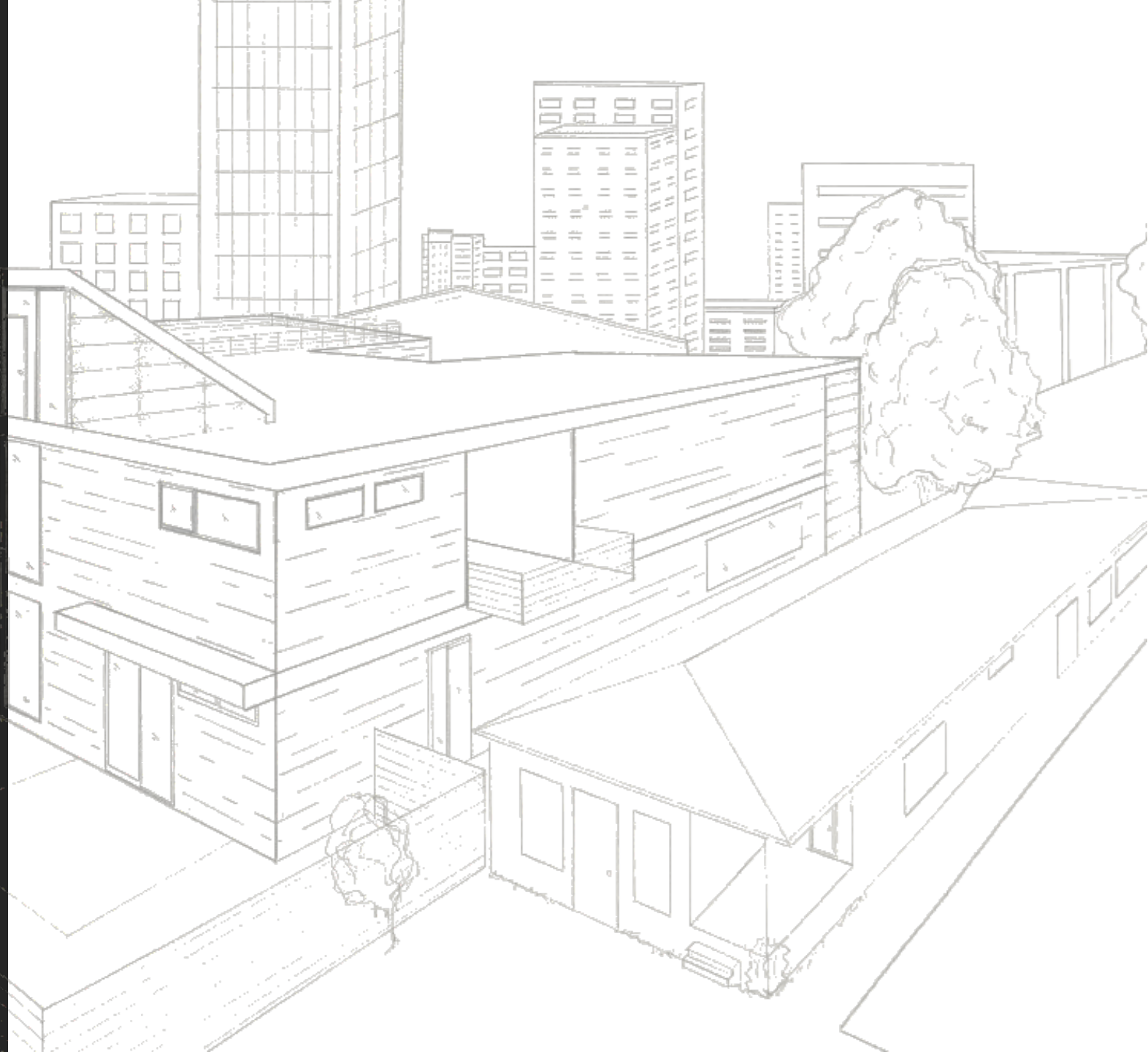
One-Point Perspective

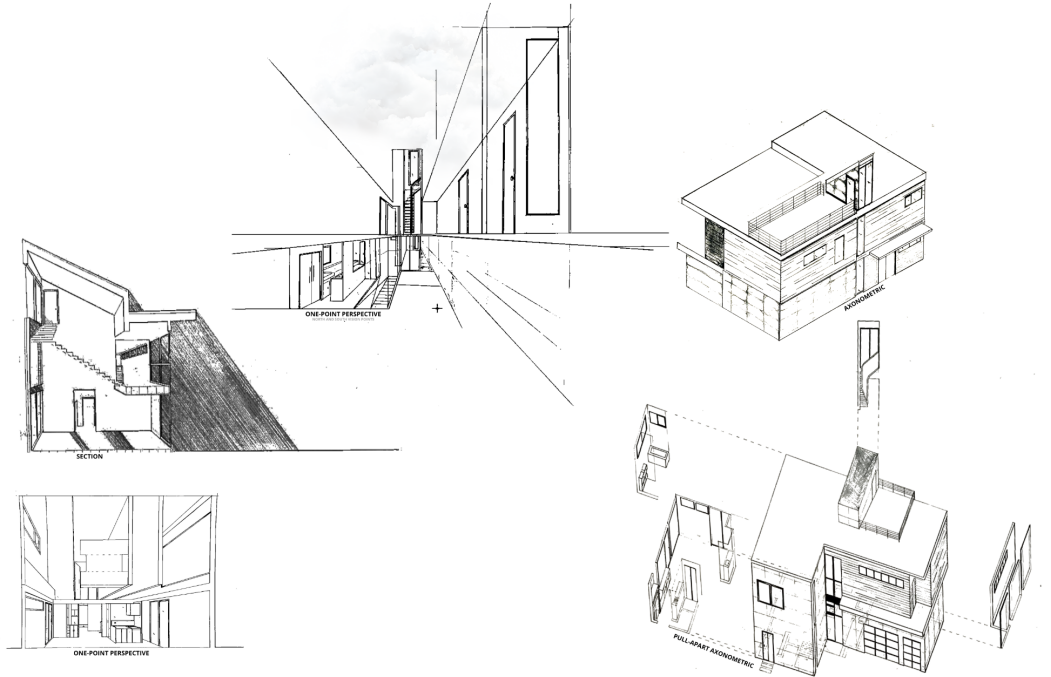


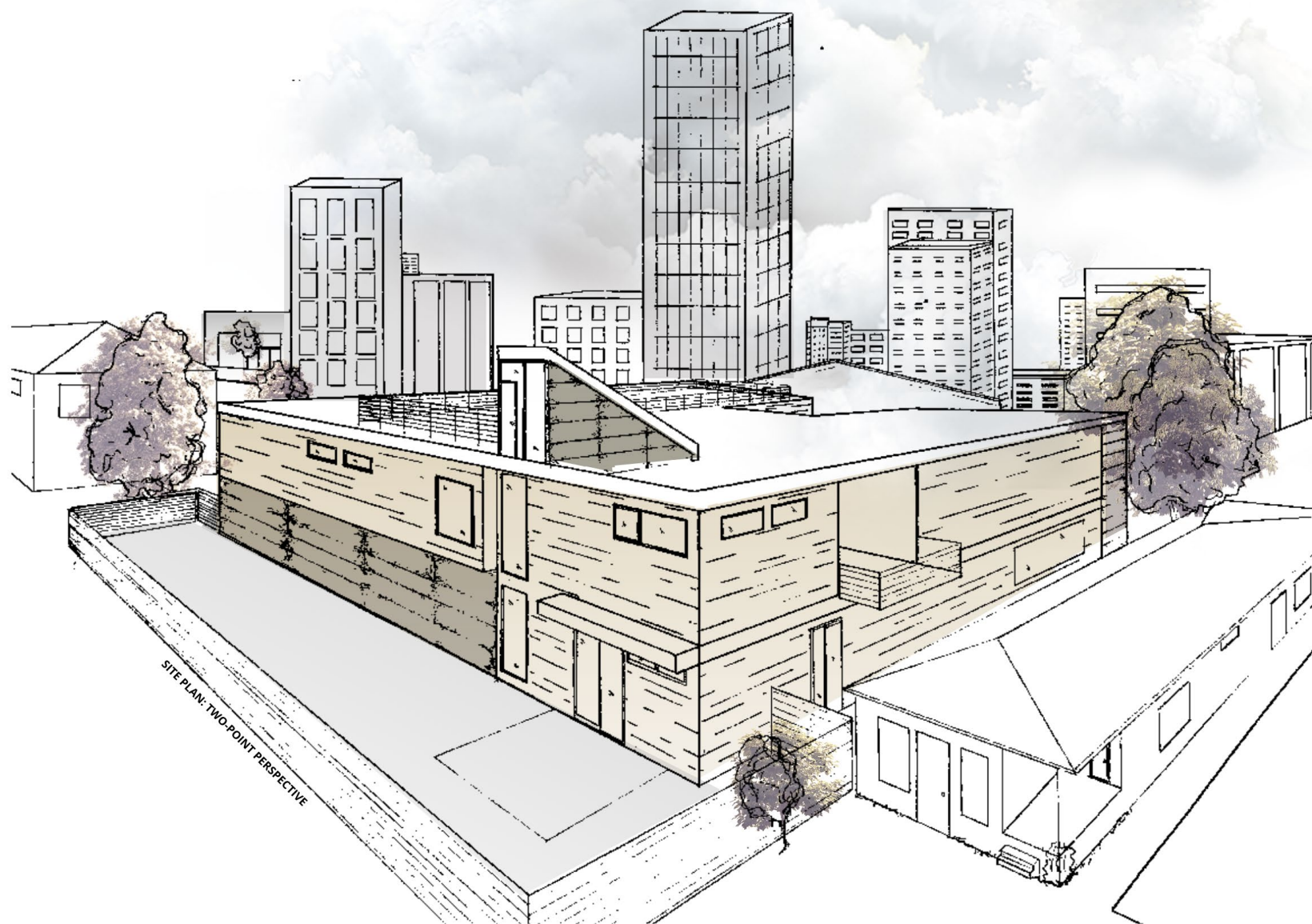


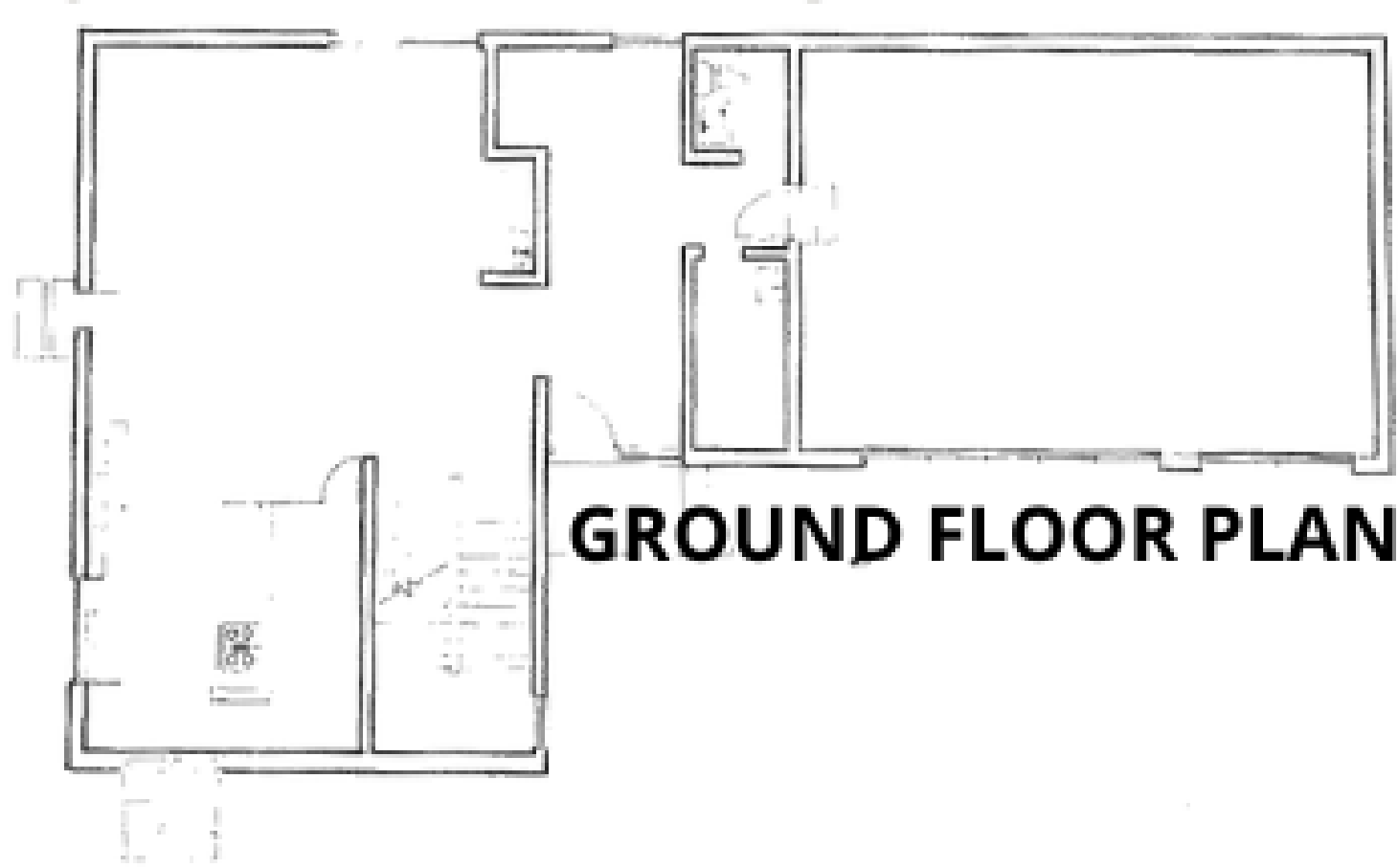
Project 6:

Final Touches / Putting It All Together



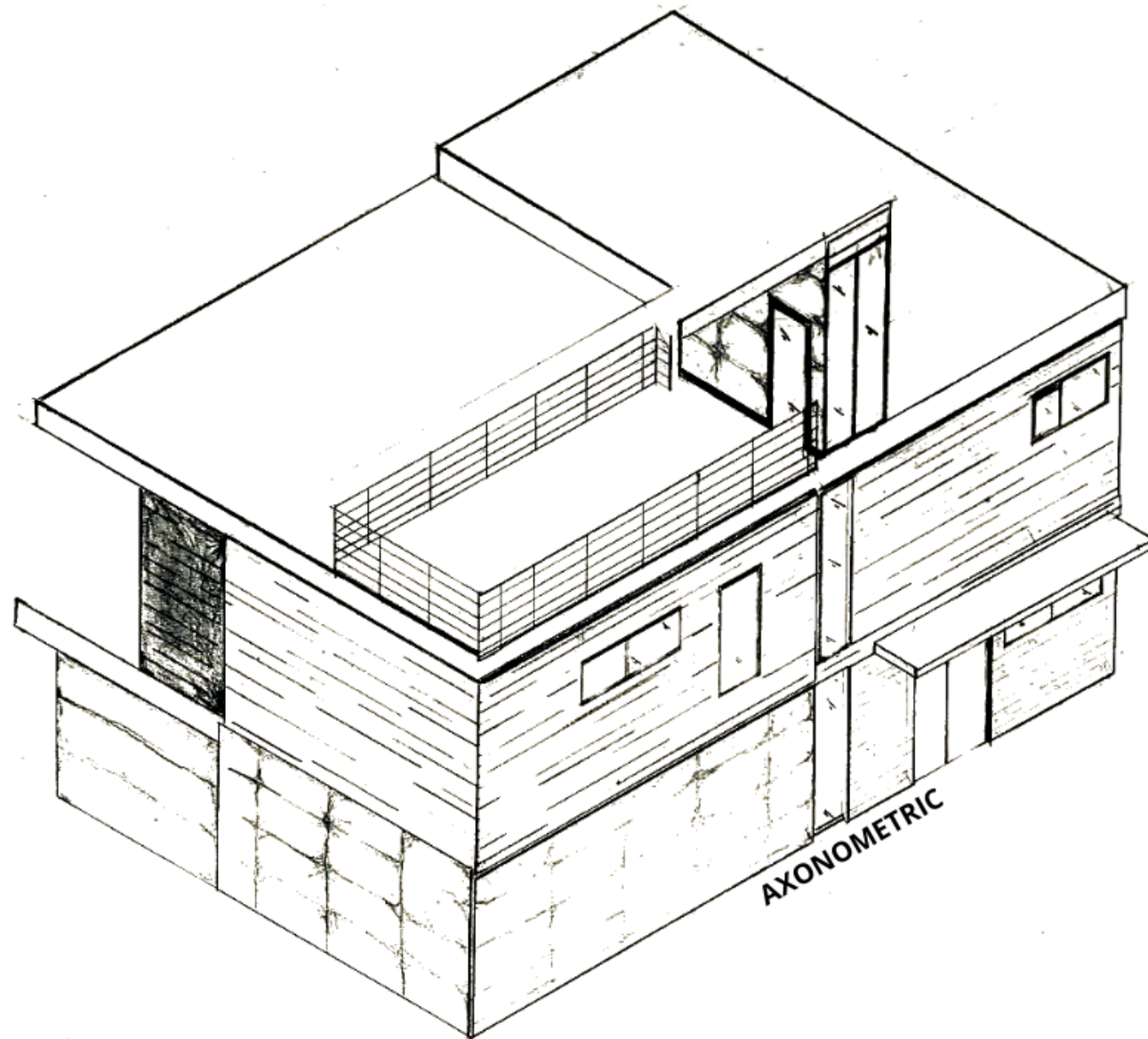


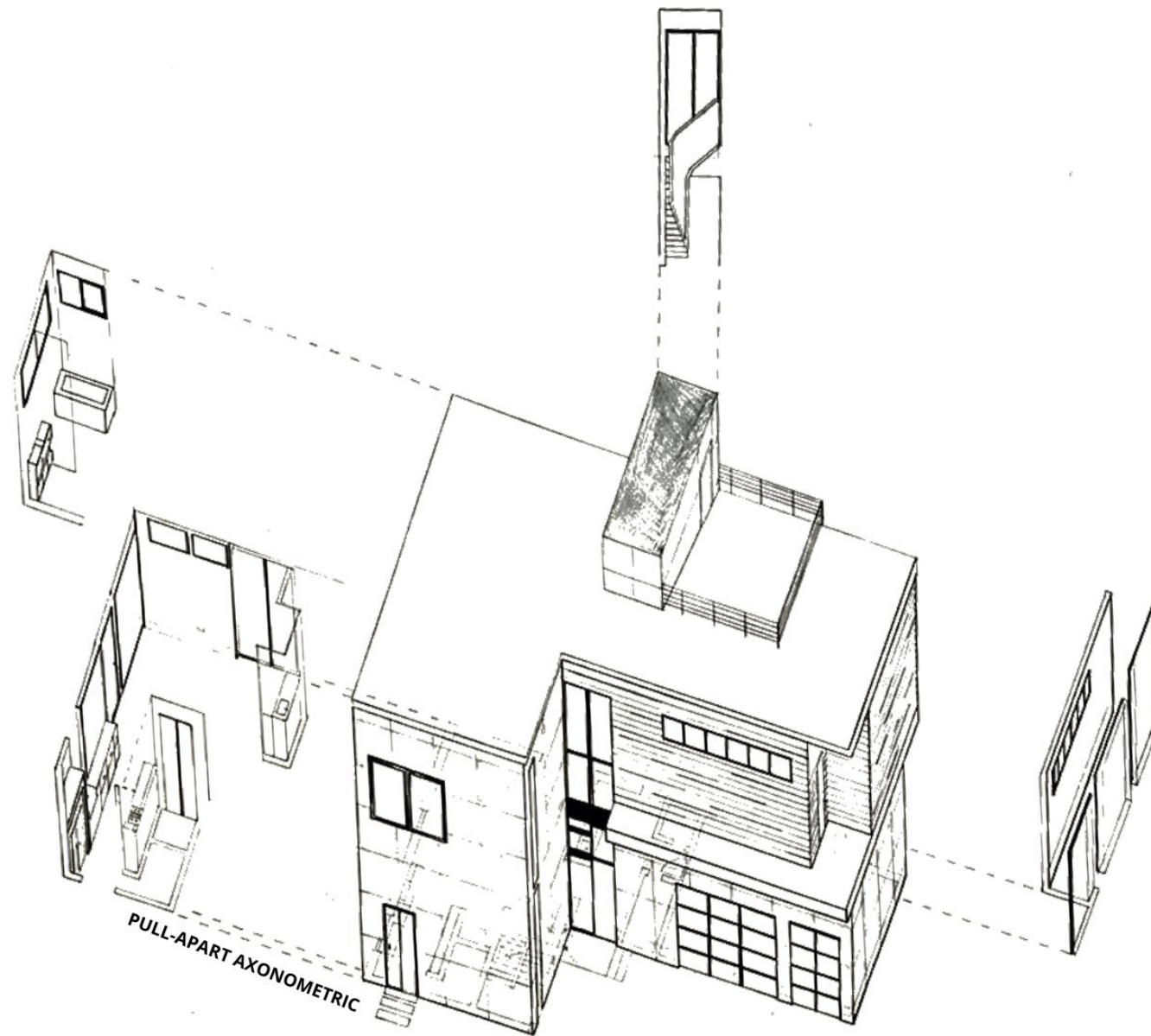


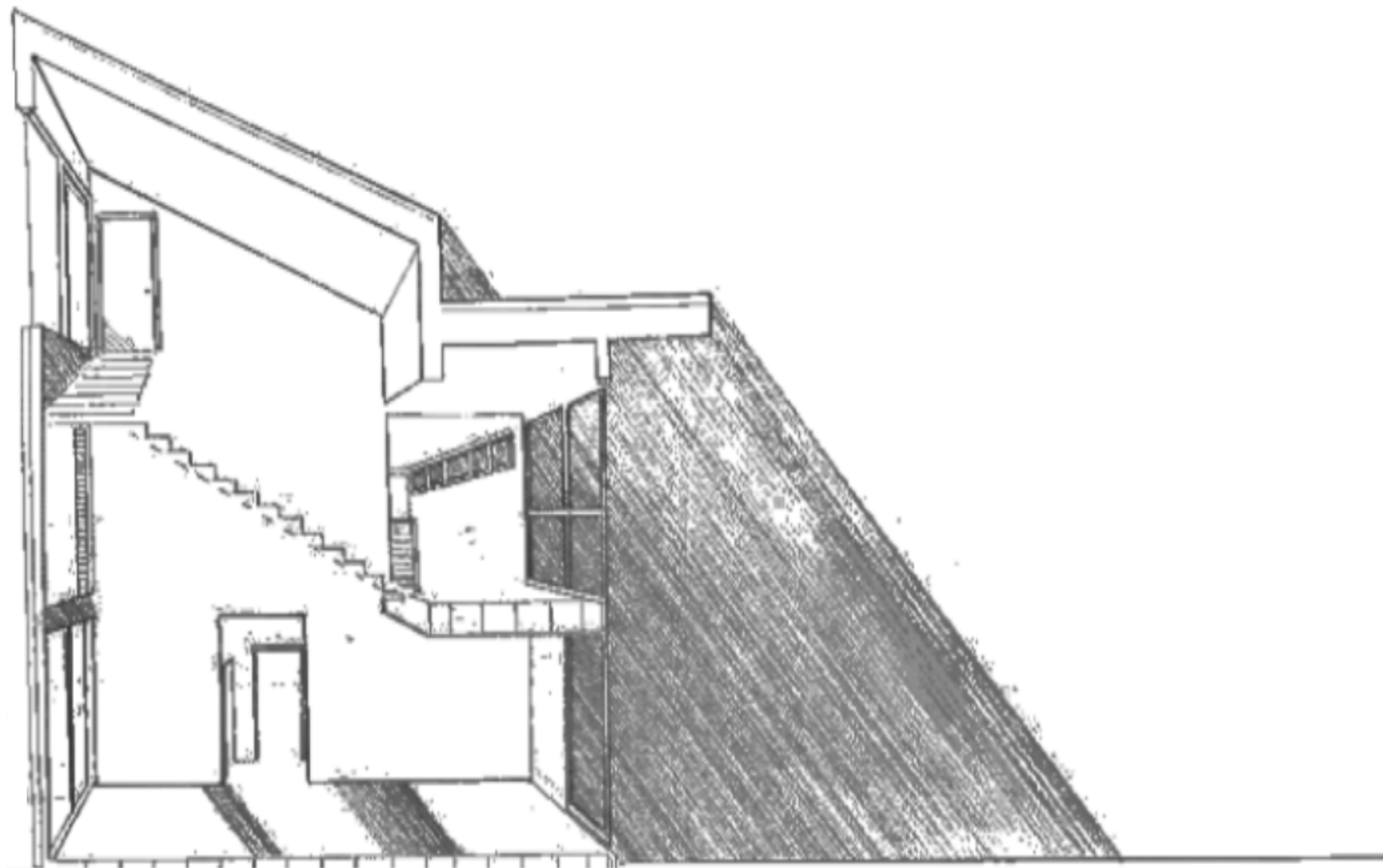


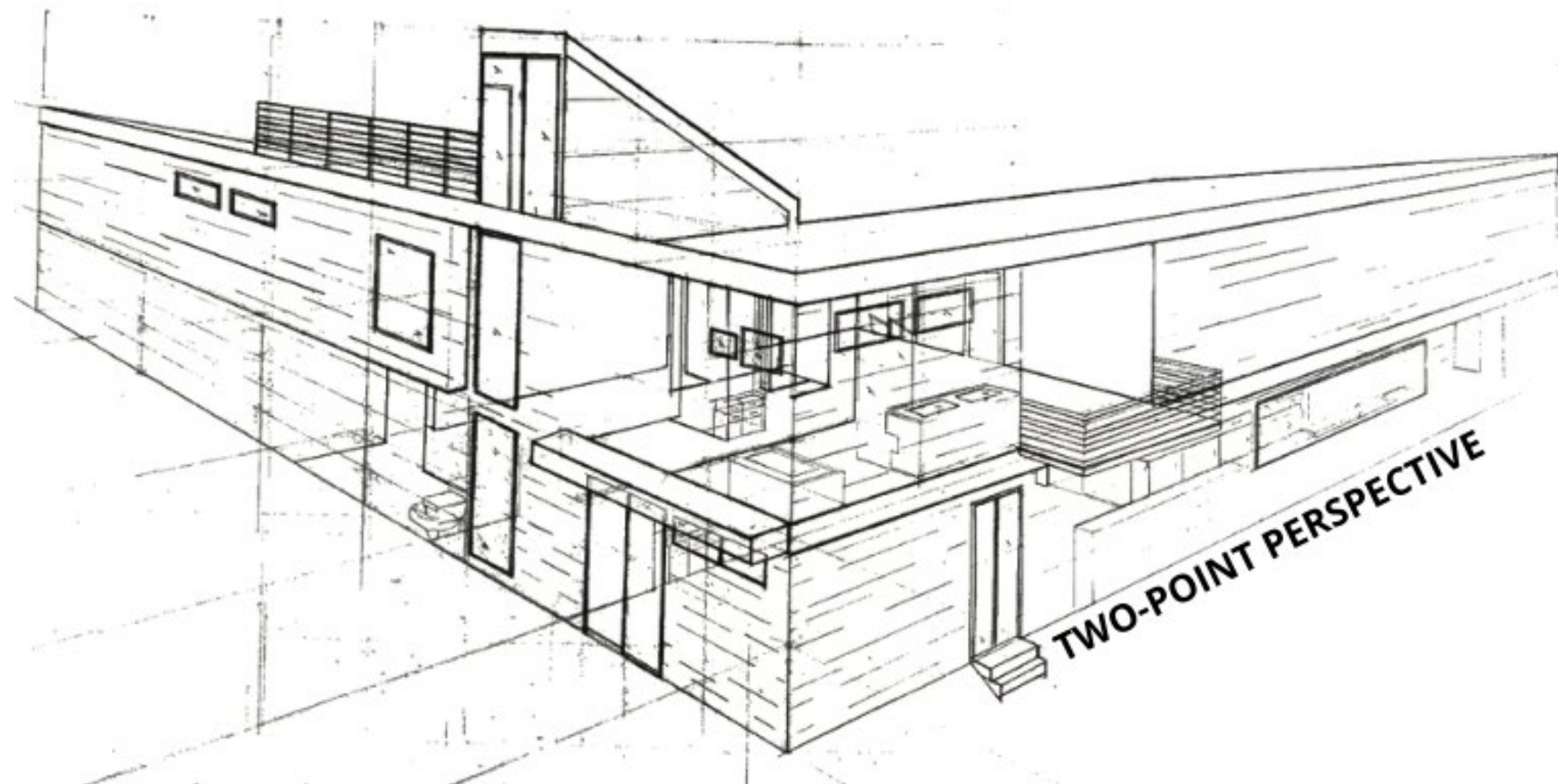
GROUND FLOOR PLAN

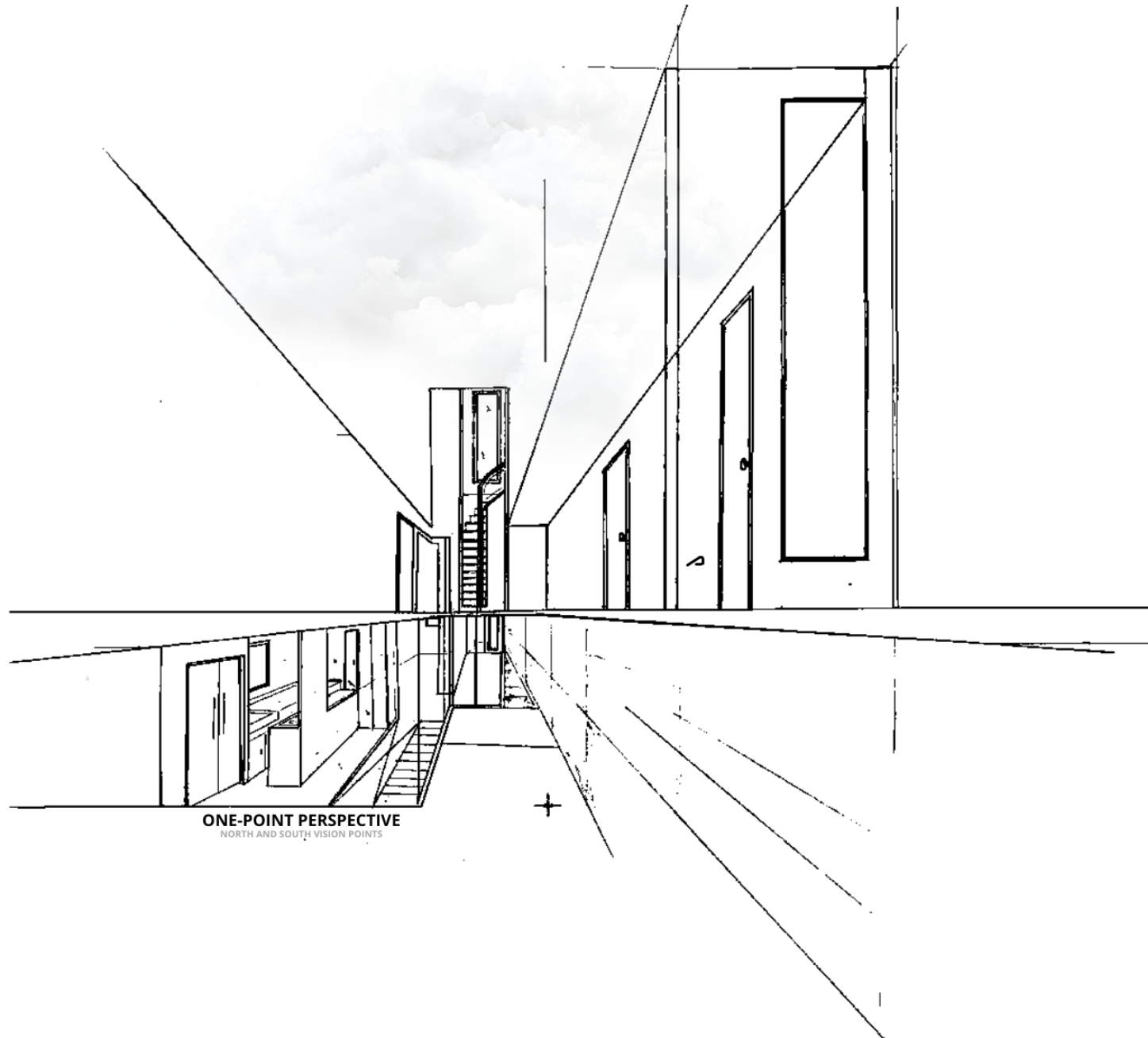






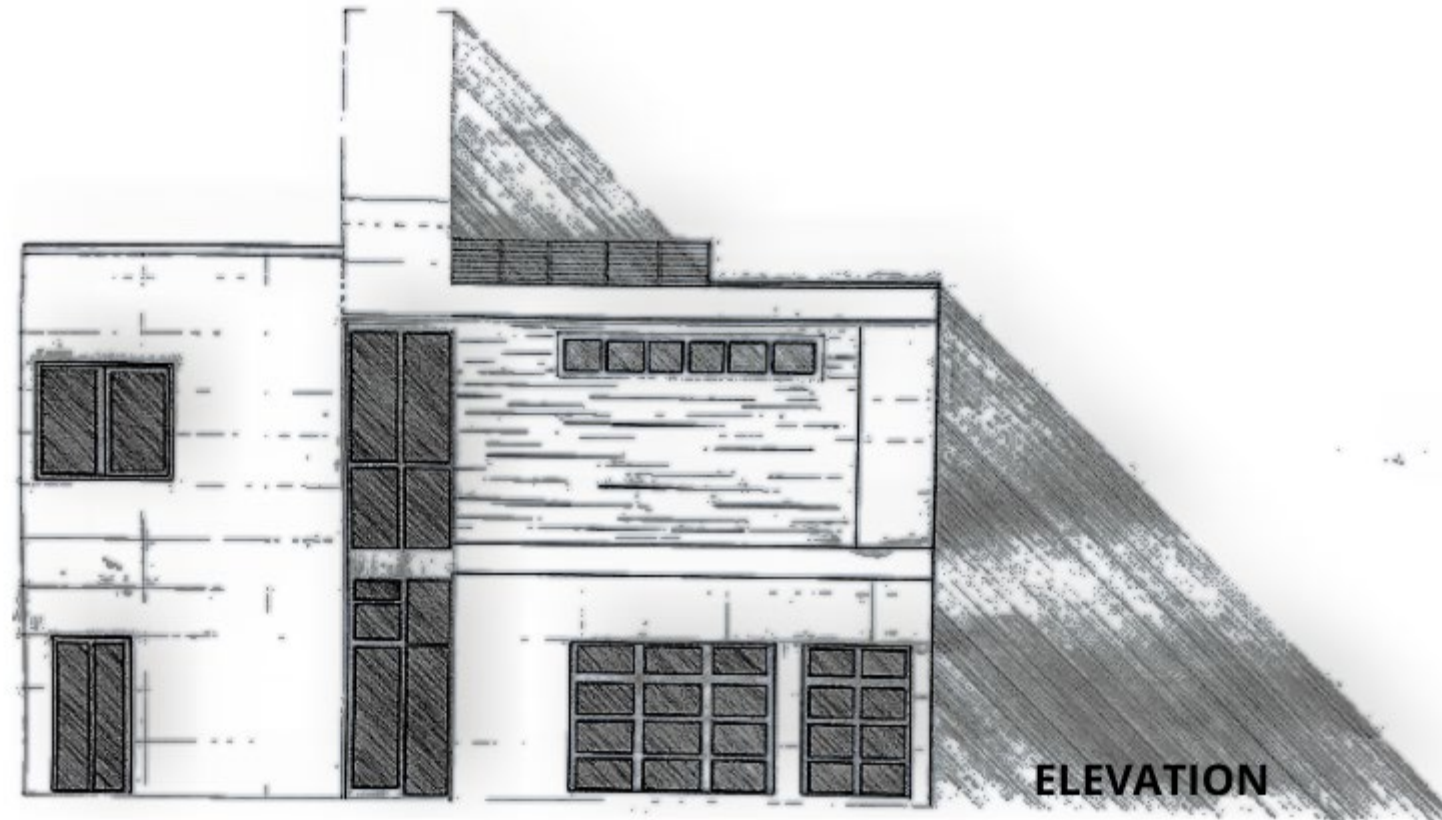






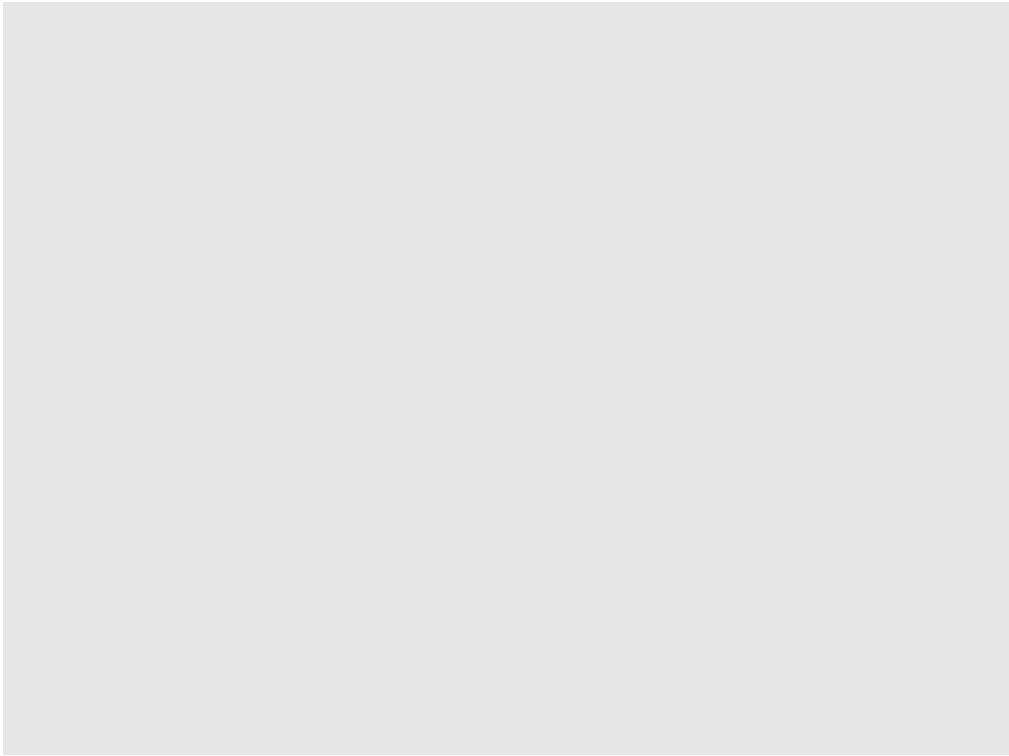


ONE-POINT PERSPECTIVE





Description 1



Description 1

Project Overview

Yin Residence



This residential home, measuring at 4700 square feet, was built in 2016 by lead Architects: Jeff Dolezal, Rebecca Harding, and Chris Houston along with other participants. It is in a historically noted neighborhood surrounded by urban developments in Omaha, Nebraska. (2.) Falling within the United States' central time zone, this location averages temperatures that range from 33 F in the winter to 87 F during the summer seasons. (3.) The front of the home faces toward downtown, offering a beautiful city view of urban life, while the backyard faces away from the city, emphasizing natural landscapes closed off from the city view.

As guests arrive to this two-story home, they must enter in by the way of a privacy gate located next to the three-car garage. As they enter the residence, they are greeted by a beautiful oversized glass door/window casing that reaches to the roof top and showcases a stairway that leads to the second floor and the roof top.

This residential structure is oriented along a grid system that illustrates two separate spaces that have a common foyer area, which establishes room relationships and circulation sequence.