

# Language Logical Twisters (ELA)- After School Tutorial

NOTE: You are to create **TWO** independent clauses using the provided RUN-ON SENTENCES

- A RUN-ON SENTENCES GOES ON AND ON WITHOUT EVER ENDING
- RUN-ON SENTENCES USUALLY DOES NOT MAKE COMPLETE SENSE

Skills: analyzing, comparing, contrasting, and deducing to determine where to place capitals and ending punctuation so that sentences communicate the intended meaning effectively.

- **Independent Clauses**- always expresses a complete thought and has a complete subject and a complete predicate
- Just because a sentence is long **does not** mean it express a complete thought=independent clause.

# Language Logic Twisters Challenge Example

Directions: Create complete sentences. \* To add a capital, cross out a lowercase letter (or simply highlight it), cross out (or highlight) a lowercase letter and write the capital letter on the provided line. \*Cross out (or highlight) any unnecessary capitals and periods. \*Add ending punctuation marks where they belongs.

**\* HIGHLIGHT ANY AND ALL CHANGES BEFORE WRITING SENTENCES**  
**CORRECTLY ON THE SPACE PROVIDED \*Write the NEW created sentences on**  
**the provided lines below**

Enjoy!

EX: We see the cart that he **pushes.** the snowman in the field looks ready to **fall.**

Correct Sentences: We see the cart that he pushes.

The snowman in the field looks ready to fall.



# Language Logic Twisters Challenge Example

Directions: Create complete sentences. \* To add a capital, cross out a lowercase letter (**or simply highlight it**), cross out (**or highlight**) a lowercase letter and write the capital letter on the provided line. \*Cross out (**or highlight**) any unnecessary capitals and periods. \*Add ending punctuation where it belongs.

**\* HIGHLIGHT ANY AND ALL CHANGES BEFORE WRITING SENTENCES CORRECTLY ON THE SPACE PROVIDED \*Write the NEW created sentences on the provided lines below**

**EX: She walked around the park was it far**

**Correct Sentences: She walked around the park.**

**Was it far?**



# Language Logic Twisters Challenge-(Run-On Sentence #1)

Directions:: Create complete sentences. \* To add a capital, cross out a lowercase

letter (**or simply highlight it**), cross out (**or highlight**) a lowercase letter and write the capital letter on the provided line. \*Cross out (**or highlight**) any unnecessary capitals and periods. \*Add ending punctuation where it belongs.

**\* HIGHLIGHT ANY AND ALL CHANGES BEFORE WRITING SENTENCES CORRECTLY ON THE SPACE PROVIDED \*Write the NEW created sentences on the provided lines below**

1. She loves to eat the green food coloring on her toast does not bother her (**make two sentences below**) (**Correct Answer Given Below**)

She loves to eat the green food.  
Coloring on her toast does not bother her.

**OR**

She loves to eat.  
The green food coloring on her toast does not bother her.



## Language Logic Twisters Challenge-(Run-On Sentence #2)

Directions: Create complete sentences. \* To add a capital, cross out a lowercase

letter (**or simply highlight it**), cross out (**or highlight**) a lowercase letter and write the capital letter on the provided line. \*Cross out (**or highlight**) any unnecessary capitals and periods. \*Add ending punctuation where it belongs.

**\* HIGHLIGHT ANY AND ALL CHANGES BEFORE WRITING SENTENCES CORRECTLY ON THE SPACE PROVIDED \*Write the NEW created sentences on the provided lines below**

**2. There is no space around his bed rooms are small in this house. (make two sentences below)**



# Language Logic Twisters Challenge-(Run-On Sentence #3)

Directions: Create complete sentences. \* To add a capital, cross out a lowercase

letter (**or simply highlight it**), cross out (**or highlight**) a lowercase letter and write the capital letter on the provided line. \*Cross out (**or highlight**) any unnecessary capitals and periods. \*Add ending punctuation where it belongs.

**\* HIGHLIGHT ANY AND ALL CHANGES BEFORE WRITING SENTENCES CORRECTLY ON THE SPACE PROVIDED \*Write the NEW created sentences on the provided lines below**

**3. You've read all the news paper the walls with it since we can't afford wallpaper (make TWO sentences below)**



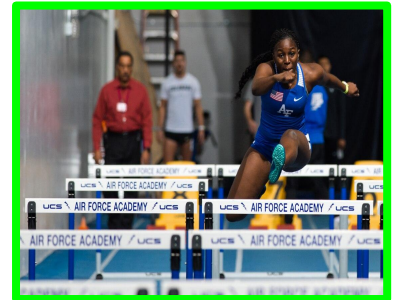
# Language Logic Twisters Challenge-(Run-On Sentence #4)

Directions: Create complete sentences. \* To add a capital, cross out a lowercase

letter (**or simply highlight it**), cross out (**or highlight**) a lowercase letter and write the capital letter on the provided line. \*Cross out (**or highlight**) any unnecessary capitals and periods. \*Add ending punctuation where it belongs.

**\* HIGHLIGHT ANY AND ALL CHANGES BEFORE WRITING SENTENCES CORRECTLY ON THE SPACE PROVIDED \*Write the NEW created sentences on the provided lines below**

**4. He jumps many fans congratulate him by clapping. (make 2 complete sentences below)**



# Language Logic Twisters Challenge-(Run-On sentence #5)

Directions: Create complete sentences. \* To add a capital, cross out a lowercase

letter (**or simply highlight it**), cross out (**or highlight**) a lowercase letter and write the capital letter on the provided line. \*Cross out (**or highlight**) any unnecessary capitals and periods. \*Add ending punctuation where it belongs.

**\* HIGHLIGHT ANY AND ALL CHANGES BEFORE WRITING SENTENCES CORRECTLY ON THE SPACE PROVIDED \*Write the NEW created sentences on the provided lines below**

**5. She rode the bike easily on the road that was hard    (make two sentences below)**

