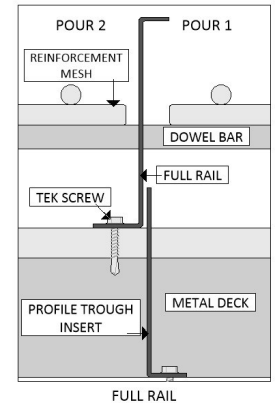
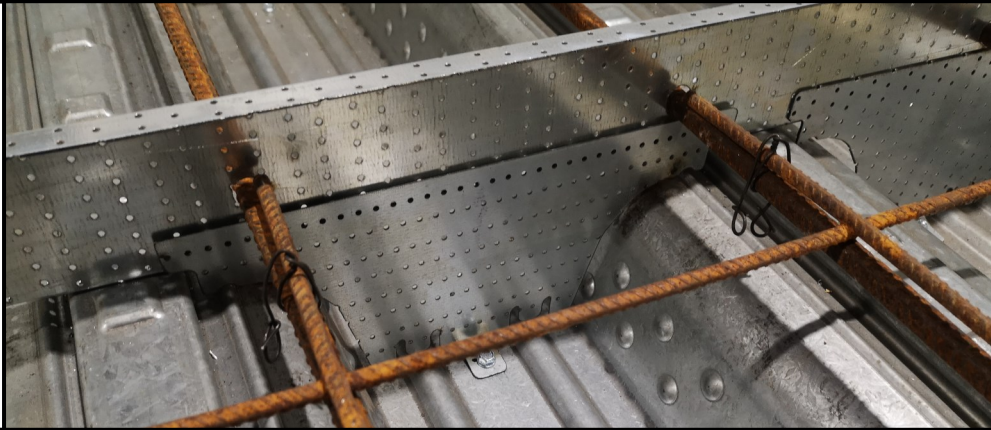
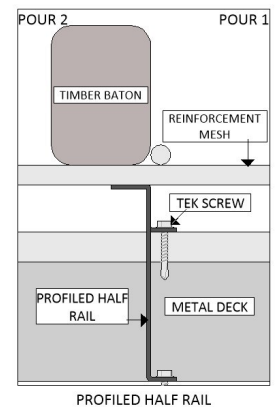
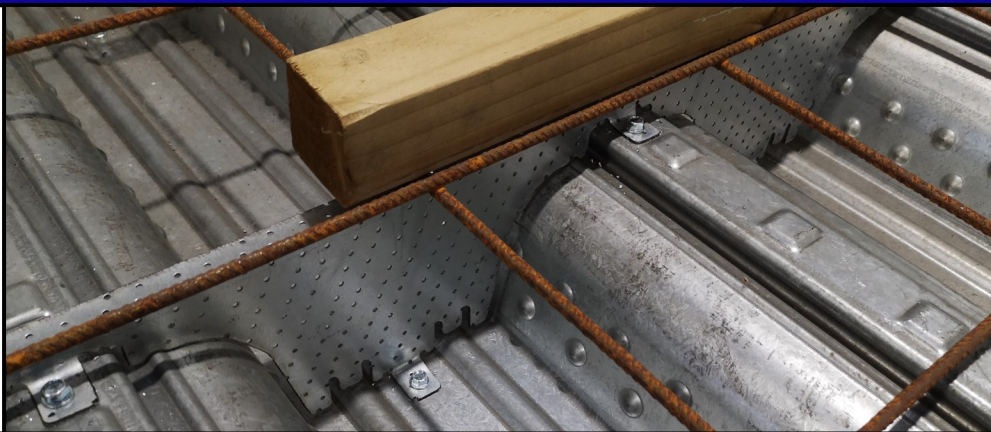


## FULL RAIL WITH TROUGH INSERTS



## PROFILED HALF RAIL



### MADE TO MEASURE

- ✓ Manufactured to customer dimensions
- ✓ 2.4m rail lengths
- ✓ Any depth. Supports provided for rails greater than 100mm deep
- ✓ Trough inserts for all metal decks

### EASY TO USE

- ✓ Delivered to site ready to install
- ✓ Fixed in place with tek screws
- ✓ All fixings supplied with order
- ✓ Labelled for ease of reference
- ✓ Reduces waste removal from site

### OFF-SITE MANUFACTURE

- ✓ Manufactured in a factory environment
- ✓ Made from 1mm galvanised perforated steel sheet
- ✓ Assistance and advice provided for drawings, take offs etc

### NO BREAKING OUT

- ✓ Perforations in the steel allow grout to penetrate, providing a profiled key for following pour to bond to
- ✓ No breaking out, no scabbling
- ✓ Saves PM and labour time on site

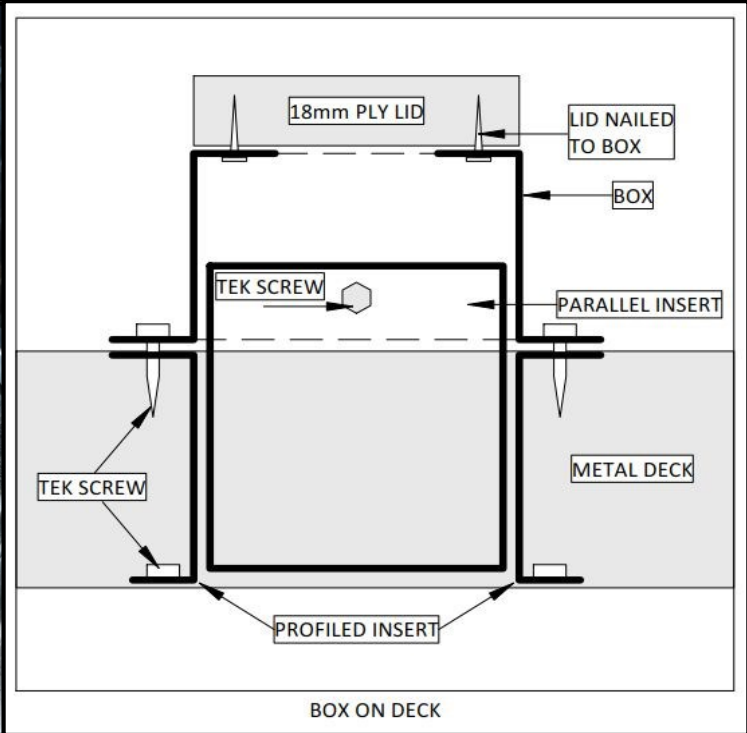
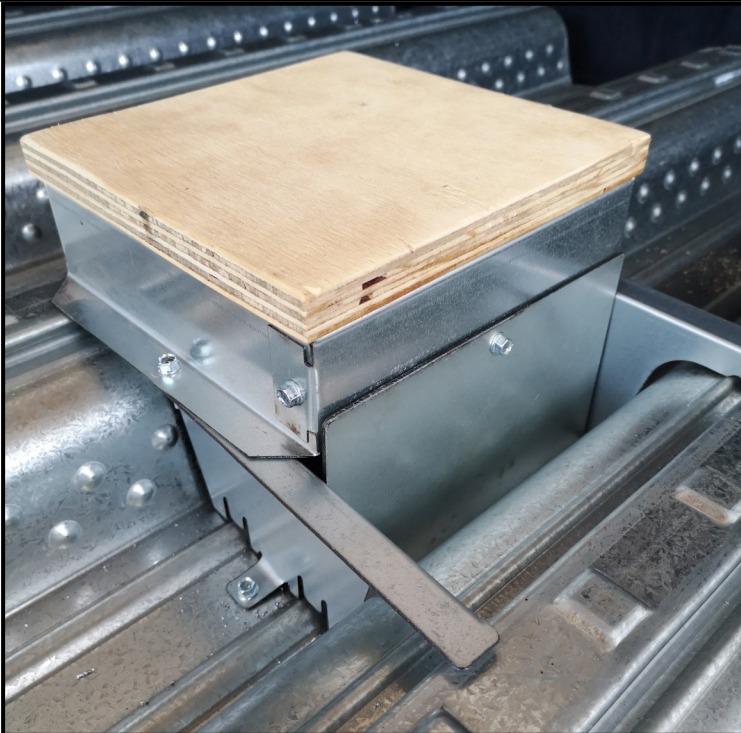
## MAKE THE FIRST FIX



Call : 01782 757142

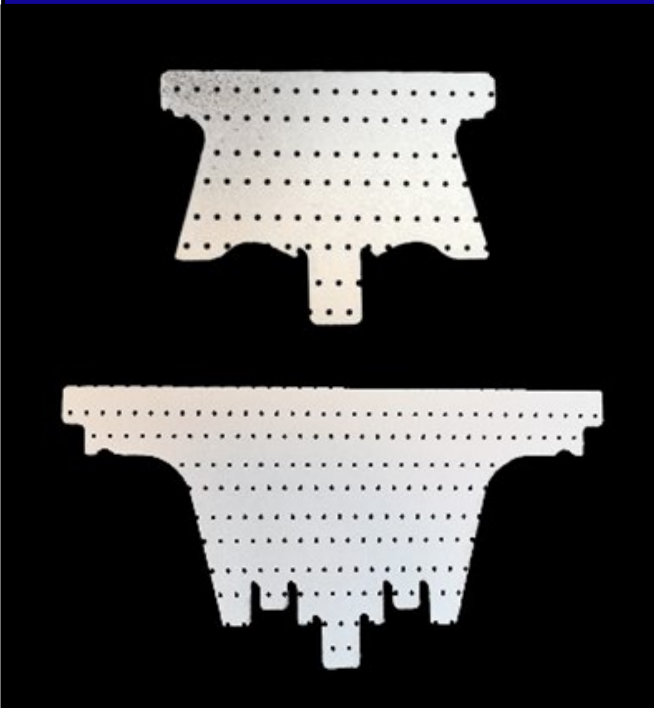


sales@firstfixformwork.co.uk



Profiled inserts are tek screwed in alignment with the setting out marks for the opening. The fabricated box is tek screwed to the returns on the inserts. Finally, blanking plates are fitted to the open sides. The box can be manufactured to any dimension and provides a quick and effective solution for creating holes in the finished floor, helping to avoid the cost and administration of post pour core drilling.

## TROUGH INSERTS



Studwelders	Kingspan Multideck
MF55	MD50
MF60	MD60
MF80	MD80
Tata ComFlor	MD146
CF51	SMD Floor Deck
CF60	R51+
CF80	TR60+
CF100	TR80
CF210	TR220

### Technical Information

**Manufacture** : Box on Deck frames are galvanised mild steel of European Standard EN10142:2000, coated with zinc by hot-dip processes (Galvatite Z), including iron-zinc alloy (Galvatite ZF). The hot-dip coatings may contain up to 0.002% lead or up to 0.12% antimony. Lids and inserts are 18mm structural plywood. Datasheets for steel and ply are available on request and from the website.

**Personal Protection** : Suitable protective clothing covering all exposed body parts should be worn. Equipment, such as safety spectacles, and cut-resistant gloves, should be worn when handling the metal frames.

**First Aid** : Steel frame skin and eye contact: Possible cuts from steel edges. Treat as other cuts; if required, seek medical attention.

FSC chain of custody certificate No INT-COC-003944.501