

MICHAEL
LESLIE
PILBARA
PERFORMING
ARTS

Vinangu + Wanggangu

A stylized, semi-transparent orange silhouette of a person in a dynamic, expressive pose, possibly a dancer or performer. The figure is positioned in the upper right quadrant, with arms extended and legs in a wide, grounded stance. The background consists of horizontal, wavy bands of various shades of red, orange, and brown, creating a textured, layered effect.

"If you're sensitive to the arts,
you're also alive to
the promise of the future"

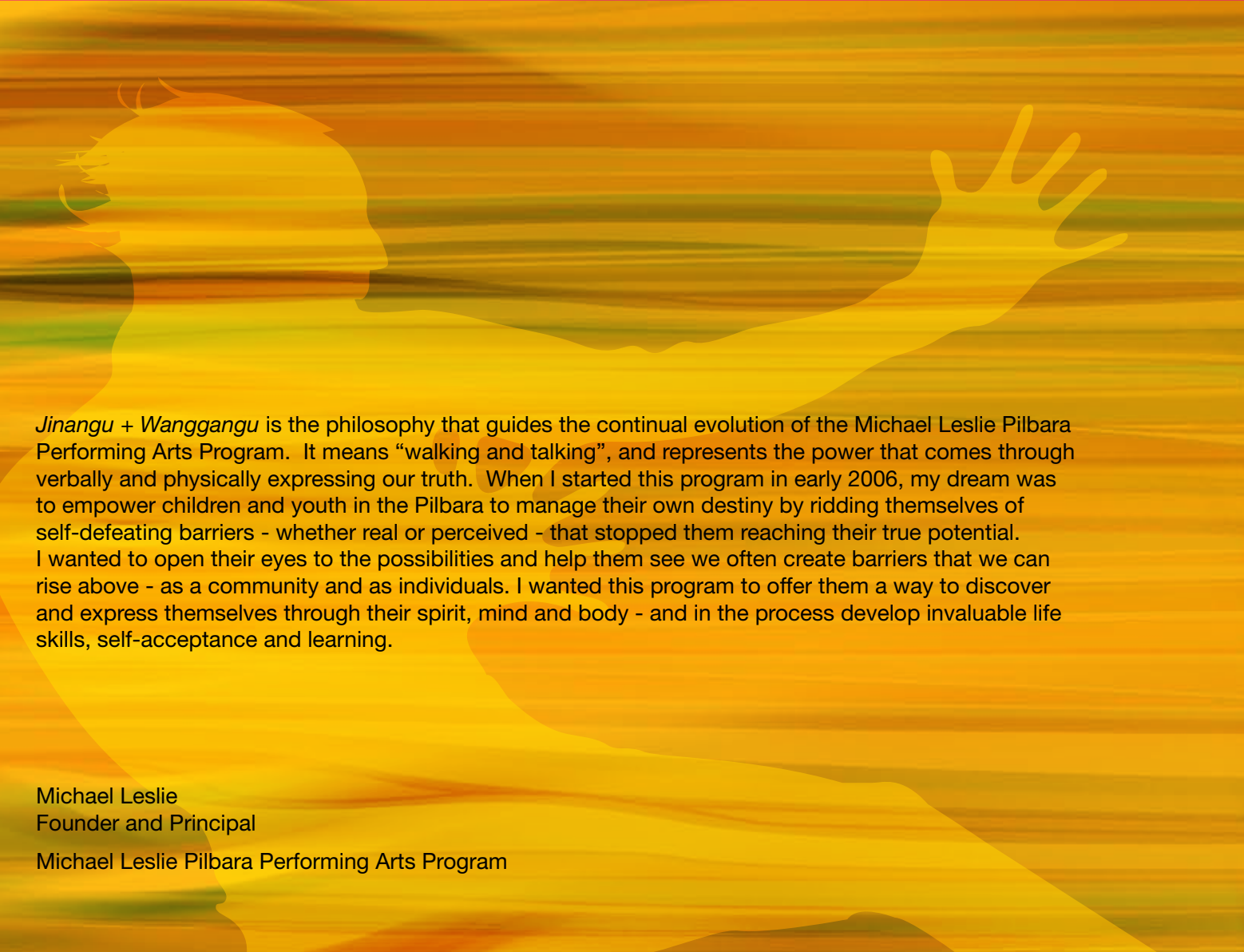
Richard Pratt AC

Walking and Talking

introduction

Rio Tinto is immensely proud to have begun its journey with the Michael Leslie Pilbara Performing Arts Program since its inception in 2006. When Michael first approached us to become the founding partner for a program that helped young people in the Pilbara region discover their personal and artistic potential, we were awestruck by his passion and sheer raw energy. In the past two years he has not slowed down, driven by his determination to make a difference in the Pilbara and inspire its community - the majority of them Indigenous - to grow in confidence, self-respect and ability. But Michael is not only concerned with Indigenous youth - his program is open to all children and youth to inspire them to overcome universal challenges such as low self esteem, shame, shyness and embarrassment, poor body image, and a constant worry about what other people think of them. Rio Tinto Iron Ore intends to continue its journey with Michael to help enrich the lives and opportunities for young people in the Pilbara. We encourage your organisation to join us as a sponsor or working partner, knowing that you will be contributing to an amazing program that has the potential to reach the hearts and minds of so many through the gift of the Arts.

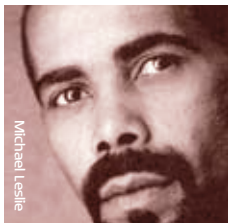
Bill Hart
General Manager Communities
Rio Tinto Iron Ore



Jinangu + Wanggangu is the philosophy that guides the continual evolution of the Michael Leslie Pilbara Performing Arts Program. It means “walking and talking”, and represents the power that comes through verbally and physically expressing our truth. When I started this program in early 2006, my dream was to empower children and youth in the Pilbara to manage their own destiny by ridding themselves of self-defeating barriers - whether real or perceived - that stopped them reaching their true potential. I wanted to open their eyes to the possibilities and help them see we often create barriers that we can rise above - as a community and as individuals. I wanted this program to offer them a way to discover and express themselves through their spirit, mind and body - and in the process develop invaluable life skills, self-acceptance and learning.

Michael Leslie
Founder and Principal

Michael Leslie Pilbara Performing Arts Program



credentials

- More than 30 years experience in the performing arts profession including dance, choreography, acting and directing in Australia and the US.
- Recipient of Sir Winston Churchill Fellowship in 1981.
- Graduate of Alvin Ailey American Dance Center, New York, in 1983.
- Founder and former director of Aboriginal Centre for the Performing Arts in WA and QLD.
- Founding partner of National Aboriginal & Islander Skills Development Scheme (NAISDA).
- Founding partner of Black Swan Theatre Company, WA.



testimonials

“Michael has an enormous amount of energy and enthusiasm and a great vision for the training of Aboriginal peoplean extremely gifted dancer and choreographer an indication of the high regard in which Michael is held is that both the State and Federal Ministers for the Arts have invited him to sit on their arts advisory panels.”

Janet Holmes a Court
Fellow founding partner of Black Swan Theatre Company

“Michael’s program is fast becoming a success story in our community ... as a role model, his performance workshops inspire and instill self confidence in kids.”

Jill Churnside,
Chairperson Ngarluma Aboriginal Corporation

“Michael Leslie is a unique artist who has committed himself to the development of his people across the entire nation ... a powerful personality who has fought for the empowerment of his people to manage their own destiny ... Leah Purcell is just one such success.”

Duncan Ord,
General Manager, Black Swan Theatre Company, 2001

“I was 17 when I met Michael. With his guidance and mentorship I began a new path in life I thought I could only ever dream of. It feels like I was given a second chance. Michael Leslie changed my life.”

Amy Hammond, Michael Leslie student and WAAPA graduate

“When the students heard Michael would be running an optional dance group, they clearly remembered him ...”the cool dance dude - he’s really good” .. they were keen to nominate for the session even though it runs through their lunch time!”

Lyn Mascauley
Principal, Tom Price Primary School

“No-one can question Michael’s talent and experience, but what makes him very special is his ability to ‘connect’ with students, both Indigenous and non-Indigenous Michael’s impact on the students, the school community and town itself cannot be quantified ... he has been about far more than just the dance itself.”

Debbie Douglass
**Project Coordinator, Garnjurri Mirnumurri Ngurr-Unga
and Tom Price Enrichment Centre**

program streams

As an internationally recognised professional dancer and choreographer, Michael understands the positive impact that creative expression has played in his own life. He identifies with the challenges Indigenous people face in pursuing their goals and dreams because he has been faced with the same challenges.

His program tackles a range of challenges and issues experienced by youth including negative self-talk, poor school attendance, low literacy and numeracy skills, poor concentration, a lack of mentoring and discipline, and a lack of respect for others. Michael's program seeks to break the cycle of Indigenous youth in communities where social issues restrict them from aspiring to be different and successful. But this is not a program restricted only to Indigenous youth - its purpose is to include and challenge all young people in the Pilbara to seize opportunities that will help them take control of their own path in life.

Current program streams include:

- Acting
- Singing
- Dance
- School program
- After-school program
- Choir
- Creative writing/adult literacy
- Physical activity and wellness
- Live productions
- Guest speaker series
- Mentoring
- Collaborative projects

Current course venues include Karratha, Pannawonica, Onslow, Roebourne, Tom Price and Wickham.

LEADERSHIP
INSPIRATION

Creating pathways for students and people in the Pilbara to further their interests and talents in the performing arts is another key component of the Michael Leslie Pilbara Performing Arts Program.

Current pathways for young people and adults to pursue these opportunities and share their skills include:

- Scholarships
- Professional Development Exchange
- Working Partnerships
- Talent Identification Program
- Train the Trainer
- Artists in Residency
- Freelancing
- Pilbara Rolling Spinifex Youth Arts Festival
- Michael Leslie Foundation for the Arts

“The Arts are a positive force for business because if the investing is planned, targeted, monitored and reviewed, it can yield broad dividends of value to business ...a positive approach by business to the Arts helps to encourage new ways of thinking across the whole society.”

Richard Pratt AC



community benefits



Community Participation

- Student performances and participation in events
- Festival performances and participation
- Local Shire and business community support

Community Development

- Sustainability for Pilbara region (eg: through Talent Identification Program)
- Stronger communities through greater self-esteem, self-awareness, confidence and enrichment
- Physical and mental wellbeing
- Social advantage - adult literacy course, ongoing program development to meet community need
- Community strength and capacity building (eg: Train the Trainer, professional development exchange)

Collaboration

- The enormous value of working partnerships
- Social and corporate responsibility and investment through sponsorship
- Events

CHOICE

sponsors and working partners

With the help of extraordinary people, sponsors and artistic partners over the past two years, the Michael Leslie Pilbara Performing Arts Program has been able to expose hundreds of kids in the region to the very best in the performing arts industry.

Thanks to their shared passion and belief in the long-term vision of this program, opportunities are continually expanding to include courses and initiatives for the wider Pilbara community. For example, the introduction of a Talent Identification Program in 2008 has created a pathway for exceptional students to enter the performing arts industry, while the inclusion of creative writing opens up new opportunities for adults as well.

I am truly humbled by the power that the human spirit has given this program to evolve beyond all my expectations. There is a hunger out there for a program like this, and I want to dearly thank all the Friends of the Michael Leslie Pilbara Performing Arts Program for making it possible.

I look forward to welcoming many new partners and sponsors to this wonderful venture.

Michael Leslie

Founder of the *Michael Leslie Foundation for the Arts*



Become a Friend of the Michael Leslie Pilbara Performing Arts Program by:

- Sponsoring a student
- Sponsoring a program
- Investment packages for corporate partners

For more information, please contact 0407 388 063,
email info@michaelleslie.com.au or go to www.michaelleslie.com.au

The Michael Leslie Pilbara Performing Arts Program wishes to thank Rio Tinto Iron Ore as its founding partner

**RIO
TINTO**
IRON ORE

...and its valuable supporters.



Freehills

NIDA



contact details

Michael Leslie

Founder and Principal

Michael Leslie Pilbara
Performing Arts Program

PO Box 21 Dampier WA 6713

Phone: (08) 9143 5082

Fax: (08) 9143 5190

Mobile: +61 (0) 407 388 063

Email: info@michaelleslie.com.au

Web: www.michaelleslie.com.au

**RIO
TINTO**

IRON ORE

The Michael Leslie Pilbara Performing Arts Program
wishes to thank Rio Tinto Iron Ore
as its founding partner



**michael leslie
foundation for the arts**