

Materials List

In this drawing class, we'll use charcoal on toned paper. I recommend the following supplies:

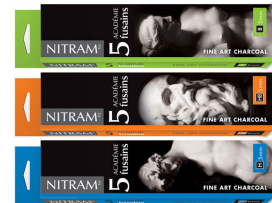
1. Drawing board (wood or Masonite)
such as 18" x 24" wood drawing board by Art Alternatives©



2. Toned drawing paper
such as Canson© Mi-Teintes "Moonstone"



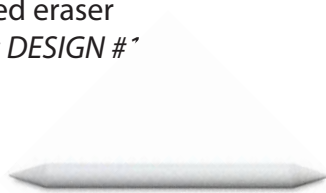
3. Nitram© vine charcoal. H, HB, and B packs:



4. Lightweight easel
such as MABEF© M-12 field easel



5. Kneaded eraser
such as DESIGN #7



6. Large paper sleeve



7. Artist tape (black or white) pH neutral



8. Chamois (for erasing soft charcoal marks)



9. Re-workable Spray Fixative (to protect your finished work)