



WV BASKETWEAVERS ASSOCIATION

2024 CONVENTION

# **Weavin' More in '24**

## **Oct. 25-27, 2024**

HARRISON COUNTY PARKS & RECREATION CENTER

43 RECREATION DRIVE

CLARKSBURG, WV 26301



### **“WEAVIN’ MORE IN ’24” CONVENTION COMMITTEE & VOLUNTEERS**

Convention Coordinators .....	Nancy Sealey, Sandy Eisenhard
Class Registration .....	Nancy Sealey
Convention Brochure .....	Jan Hensley
Meals (Fri. dinner, Sat. Lunch & Dinner, Sun. lunch) .....	Nancy Sealey, Sandy Eisenhard
Name Tags .....	Nancy Sealey
On Site Registration.....	Jan Hensley
Signs.....	Nancy Sealey
Silent Auction/Raffle.....	Western Weavers
Teacher Appreciation Gifts .....	WVBA
Teacher Liaison .....	Lara Lawrence
WVBA Logo Products.....	Lara Lawrence
Gail Hutchinson Memorial Raffle .....	Memorial Committee



### **2024 WVBA Officers**

Jan Hensley, President	Lara Lawrence, Vice President
Sharon Scott, Treasurer	Nancy Sealey, Secretary



### **“WEAVIN’ MORE IN ’24” CONVENTION SCHEDULE**

<b>Friday, Oct. 25</b>	<b>Registration:</b> begins at 12 noon <b>Weaving:</b> 1pm—5pm; 6pm—8pm <b>Dinner:</b> 5pm—6pm
<b>Saturday, Oct. 26</b>	<b>Weaving:</b> 9am—6pm <b>Lunch:</b> 1pm—2pm <b>Dinner:</b> 5pm—6pm General meeting and raffle immediately following dinner.
<b>Sunday, Oct. 27</b>	<b>Weaving:</b> 9am—12 noon <b>Lunch:</b> 12 noon

# WEST VIRGINIA BASKETMAKERS ASSOCIATION

In partnership with Harrison County Parks & Recreation

“Weavin’ More in ’24!” Convention

October 25-27, 2024

Welcome! It is our pleasure to invite you to the 2024 WVBA Convention. **Registration will be limited to the first 80 registrants so get your registration in as soon as possible!**

Once again, our convention is being held at the Harrison County Parks & Recreation Center. There are multiple hotels nearby for your convenience. We have utilized this facility for several years and it has proven to provide outstanding lighting, ample parking, handicapped accessibility, and an open floor plan that allows for more than the average number of weaving stations.

Please note that your main meals (lunch and dinner) are included in your registration fees. Beverages and snacks will be provided throughout the weekend. **We appreciate those of you who will be bringing your favorite snack and/or dessert to share with all participants as a way to keep costs down for the convention. Thank you!**

We will have door prizes, silent auctions, and raffles. Also, teachers will be vending throughout the convention.

We can’t wait to see the faces of old and new friends this year! We hope you’ll join us October 25-27 for “Weavin’ More in ’24”!

## CONTENTS

Convention Committees & Volunteers .....	Inside Front Cover
Convention Schedule .....	Inside Front Cover
2024 WVBA Officers .....	Inside Front Cover
Welcome .....	Page 1
WVBA Logo Products and Driving Directions.....	Page 2
Map to the Harrison County Parks & Recreation Complex.....	Page 3
Notes & Convention Information (vendors, hotels, guilds) .....	Page 4
Registration Instructions .....	Page 5
Class/Basket Descriptions .....	Page 6
WVBA Membership Form .....	Page 17
Registration Form.....	Page 18



This year, WVBA logo products include an apron, short sleeve T-shirt, long sleeve T-shirt, tote bag (screen-printed), and polar fleece vest with the WVBA logo embroidered on it. The T-shirts will be maroon; polar fleece vests and aprons will be navy blue; and tote bags will be navy/natural.

These products are available only by **PREORDER**. If you would like to have one, please make sure to indicate your choice and sizes (if applicable) on the registration form and include the cost in your registration fees.

#### **DRIVING DIRECTIONS**

Harrison County Parks & Recreation Center  
43 Recreation Drive; Clarksburg WV 26301  
Phone: 304.423.7800; Website: [hcparks.org](http://hcparks.org)

**From Interstate 79:** Take exit 119; follow directions below from Rt. 50 traveling West.

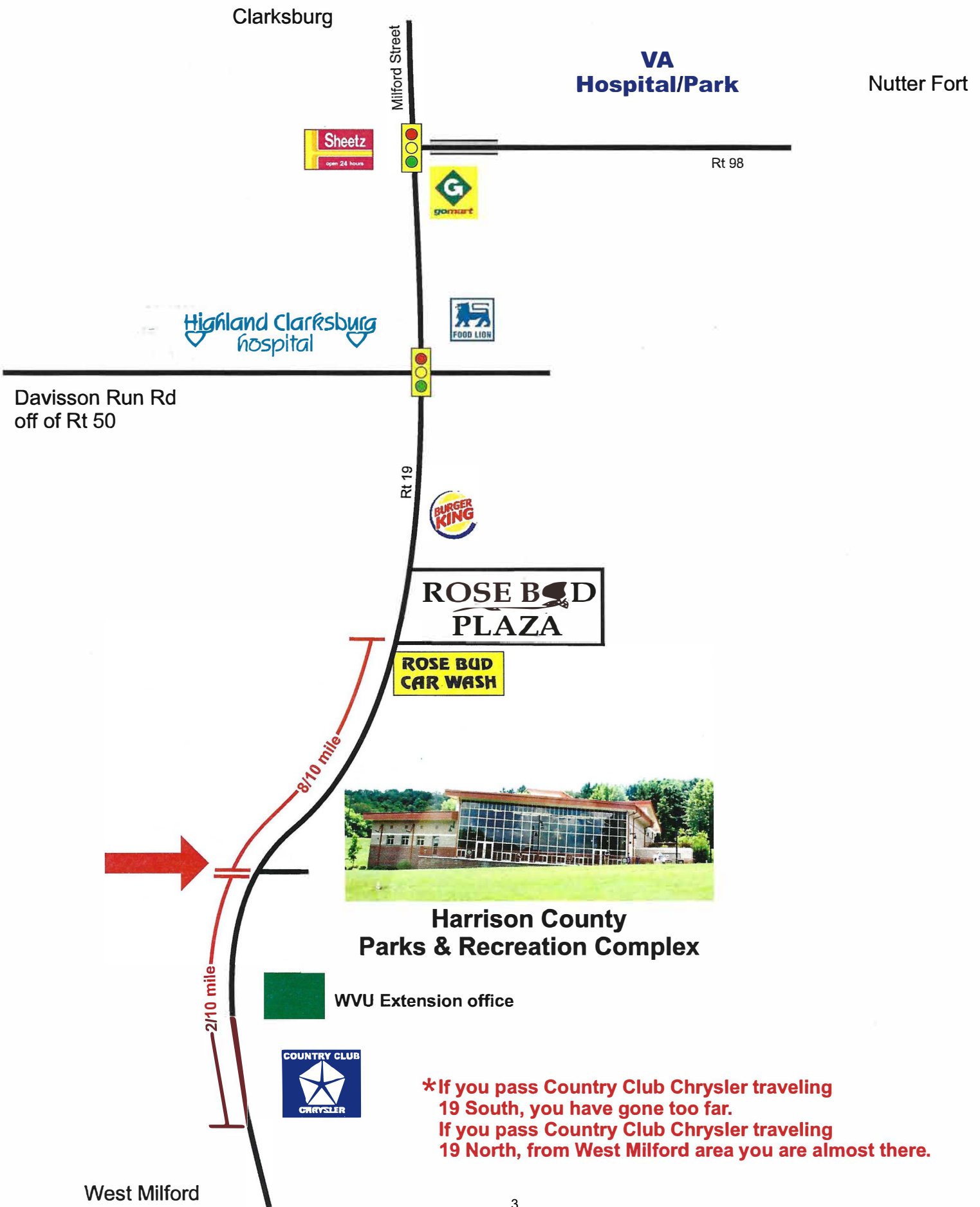
**From Interstate 77:** Take exit 176; follow directions below from Rt. 50 traveling East.

**From Rt. 50 traveling West:** Follow Rt. 50 West into Clarksburg. As you travel through Clarksburg on Rt. 50 (towards Parkersburg), you will come to a traffic light at Rt. 98. Turn left onto Rt. 98 and follow past Liberty High School to the intersection of Rt. 98 and Rt. 19 (Food Lion and CVS are across the intersection). At the traffic light, turn right onto Rt. 19 South. Go about 1 mile, passing Rosebud Shopping Center. The Harrison County Recreation Complex and 4-H Center will be on your left. The next building on the left (going South) is the WVU-Harrison County Extension Office. Sunny Croft Country Club will be across the road on your right. (If you drive past Country Club Chrysler Car Dealership—you've gone too far!)

**From Rt. 50 traveling East:** Follow Rt. 50 West towards Clarksburg. As you travel approach Clarksburg on Rt. 50, you will come to a traffic light at Rt. 98. Turn left onto Rt. 98 and follow past Liberty High School to the intersection of Rt. 98 and Rt. 19 (Food Lion and CVS are across the intersection). At the traffic light, turn right onto Rt. 19 South. Go about 1 mile, passing Rosebud Shopping Center. The Harrison County Recreation Complex and 4-H Center will be on your left. The next building on the left (going South) is the WVU-Harrison County Extension Office. Sunny Croft Country Club will be across the road on your right. (If you drive past Country Club Chrysler Car Dealership—you've gone too far!)

# Directions to

## HARRISON COUNTY PARKS & RECREATION COMPLEX



## NOTES & CONVENTION INFORMATION

- 🛒 **Vendor:** Royalwood Ltd; Mansfield, OH; [www.royalwoodltd.com](http://www.royalwoodltd.com); (419) 526-1630
- 🛒 **Summers Sharpening LLC** will be on site Saturday, Oct. 26, to sharpen scissors for \$5 a pair.
- 🛒 **Gail Hutchinson Memorial Fund** was established in honor of a great teacher and friend to many basket weavers. Gail served as Past President of WVBA and Convention Chair. A fund (from the proceeds of the raffle held at the Annual Convention and donations made in Gail's memory) has been established to award scholarships to participants in next year's WVBA convention. Donations are being accepted and anyone wishing to contribute may do so by sending donations to Sharon Scott, WVBA treasurer.
- 🛒 **Hotel information:** There are numerous, excellent hotels in the Clarksburg, WV, area that offer discounts on the website: [www.hotels.com](http://www.hotels.com).



### **Four Square Weavers Guild; Judy McCoy**

Beckley area

### **Homespun Basketweavers Guild; Karen Burdette**

Ripley, Jackson County, WV, and surrounding area

### **North Central Guild; Elaine Sinclair**

Salem, Harrison County, WV, and surrounding area

### **Southern Guild; Becky Walker**

Greenbrier County, WV, and surrounding area

### **Western Weavers Guild; Karen Buskirk**

Huntington, Cabell County, WV, and surrounding area

### **Mound Weavers; Ruthie Crow**

Moundsville area

## SKILL LEVELS:

**All Levels** – For the beginner weaver who has little to no experience and may need practice with techniques or shaping, all the way to advanced students.

**Beginner/Intermediate** – Having gained basic weaving skills, this skill level introduces new pattern weaves such as twill and different rim and lashing finish variations. Larger baskets and patterns with specific weaving instruction are included at this level.

**Intermediate** – Intermediate weavers have gained proficiency in weaving techniques. They can begin with ease and little instruction and have mastered basic weaving techniques. They do not need direction for setting up bases, twining, completing over/under weaves, or creating rims using the specific materials mentioned in the class description.

**Intermediate/Advanced** – These weavers are quite skilled in most techniques and may only require assistance with difficult or unique designs and shaping. Most weaving in class can be done independently and without specific instruction.

**Advanced** – Advanced weavers are highly proficient and experienced. They have mastered most weaving techniques and are ready to be challenged. Teachers are confident these students will not need assistance with basic weaving skills.

## REGISTRATION INSTRUCTIONS

**Registration is limited to the first 80 registrants.**

Registration fees for the 2024 WVBA Convention are as follows:

**Full Convention Early Registration (due by Aug. 1, 2024)**

- **\$75** for WVBA Members
- **\$95** for non-members (includes \$75 registration fee and \$20 membership fee)

**Full Convention after Aug. 1:**

- **\$80** for WVBA Members
- **\$100** for non-members (includes \$80 registration fee and \$20 membership fee)

**Day Registration:**

- **\$30** per day (includes meals and snacks)

**Class fees:** due no later than September 10, 2024

**Please read the following instructions carefully:**

1. Paid members of the WVBA will receive the 2024 Convention Booklet. Non-members will be charged a pre-paid fee of \$5.00 for the Convention Booklet or it may be downloaded from the WVBA website.
2. You **must** use the registration form provided in the Convention Booklet or on the website to register. Please make a copy for your records. **Please print clearly or type.** Classes are assigned on a first come first served basis by *postmark date*. You should list more than one class for each period. Only listing one class will not guarantee you will get that class.
3. Your registration fee must accompany the registration form along with a stamped, pre-addressed No. 10 envelope (4" x 9"). **Make checks payable to WVBA.**
4. Registration forms and registration checks are to be mailed to: **Nancy Sealey; 2768 Emmons Ave.; Huntington, WV 25702.**
5. Class fees are due once you have been notified of your class assignments. All checks must be made payable to the teacher(s) for each assigned class(es) and dated **Oct. 25, 2024**. Class fees are to be mailed to Nancy Sealey; 2768 Emmons Ave.; Huntington, WV 25702, **by Sept. 10, 2024.**
6. No refunds for cancellations after Sept. 30, 2024. **NO EXCEPTIONS.**
7. Note: **No collapsible buckets!** Please note basket size when making your selections. To maximize the number of baskets being offered, most teachers are teaching multiple baskets during the same period. Don't forget to bring your basket making tools and any others specified by the teacher.

Our Webpage will have the Convention Booklet on it: [www.wvbasketmakersassociation.com](http://www.wvbasketmakersassociation.com)

Questions? Contact:

Nancy Sealey; 304-544-1267  
[nana276815@gmail.com](mailto:nana276815@gmail.com)

Sandy Eisenhard; 717-749-3703  
[sandyeisenhard@gmail.com](mailto:sandyeisenhard@gmail.com)

**Friday; October 25, 2024**

**Class times: Weaving (1pm-5pm); Dinner (5pm-6pm); Weaving (6pm-8pm)**



**Candy Barnes; Cherry Nantucket Wreath (Small); Beginner; \$65**

Length of Class – 6 hours

Dimensions – 2" tall X 7.5" wide

Materials – Cherry base and rim, cane

Description – Students will insert tapered staves in a cherry base and will weave with cane over a class mold. A cherry rim will be glued on.

**\*Note:** Kits will not be available for this project.



**Candy Barnes; 7" Cherry Twill; Intermediate; \$85**

Length of Class – 6 hours

Dimensions – 3.5" tall x 7" diameter at top

Materials – Cherry base and turned cherry rim, cane

Description – Students will insert tapered staves in a cherry base and will weave with cane over a class mold. A turned cherry rim will be glued on. Students will have options to be creative with color. Teacher provides all tools.

**\*Note:** Kits will not be available for this project.



**Elaine Sinclair; Child's Backpack; All Levels; \$60**

Length of Class – 6 hours

Dimensions – 6" x 9" woven base; height: 13"; approx. 32" circumference at "belly"

Materials – Natural and dyed reed (must choose color when registering: red, dark green, blue, all natural); Straps are shaker tape to match the color of basket.

Description - A wonderful little back pack to make for your child—or you. Students will learn how to shape the "belly" to get that back pack look.



**Elaine Sinclair; Daisy Purse Tote; Intermediate; \$70**

Length of Class – 6 hours

Dimensions – 4" x 9.5" wooden base; 10" tall

Materials – Natural reed, leather handles (must choose color when registering: golden brown, black, saddle tan)

Description - Herringbone base sets up this dandy little tote. It is a beautiful addition to your collection; woven in a 2-2 twill pattern, this tote is small enough to be a purse but big enough to be a small tote. No liner.



*When finished using Weaver's Stain, turn can upside down and press nozzle for approximately 2 seconds to allow the propellant to clean the cylinder and nozzle. Remove nozzle and store in a small jar of mineral spirits. Rinse with water and place back on can when you're ready to stain again.*

**Friday, October 25, 2024**

**Class times: Weaving (1pm-5pm); Dinner (5pm-6pm); Weaving (6pm-8pm)**



**Karen Unroe; Simply Twill; All levels; \$35**

Length of Class – 6 hours

Dimensions – 5" x 5" woven base; 7" tall

Materials – Natural and dyed reed (must choose colors when registering: burgundy, dark green, or brown).

Description – Simply Twill is a perfect basket for those with little or no twill experience.

Emphasis will be on packing evenly, maintaining weaving tension, and shaping.



**Karen Unroe; Simple Gifts; All levels; \$55 (three kits)**

Length of Class – 6 hours

Materials – Reed (natural and dyed); buttons; wooden market handles

Dimensions:

Cookie basket: 5" L x 3" W x 3" tall w/o handle; 5" with handle

Sweet Heart: 5" x 5" x 2.5" tall

Merry Lil' Christmas: 3" x 3" x 8" to top of handle



**Cheryl Thomas; Randed Carrier; Advanced Beginner; \$50**

Length of Class – 6 hours

Dimensions – 16" L, 8" W, 12" T w/o handle 20" T to top of handle

Materials – Reed; color choices will be available at class time.

Description – Weavers will learn how to weave the bottom onto a D-handle, add fillers to the bottom, and triple twining.



**Cheryl Thomas; Twined Storage Basket; Intermediate; \$55**

Length of Class – 4 hours

Dimensions – 13.5" diameter, 8" T w/o handle

Materials – Natural and dyed reed (color choices will be available at class time) and leather handles.

Description – Woven onto a wooden base, this multi-purpose basket will give weavers a chance to practice triple twining and twining with mixed reed sizes.



*To determine the spoke length for designing you own basket, take the base measurement plus the height measurement times 2 (for each side of the basket) and add 4 or 5 inches for length to tuck. Use this same formula for horizontal and vertical spoke lengths.*

**Friday, October 25, 2024**

**Class times: Weaving (1pm-5pm); Dinner (5pm-6pm); Weaving (6pm-8pm)**



**Rami McKinney; Seaside; All levels; \$40**

Length of Class – 6 hours; maximum of 8 students

Dimensions – 12" L x 8" W x 8.5" T

Materials – Natural and dyed reed (a variety of colors will be available); seagrass

Description – Learn to decorate a hoop for the handle, make the God's Eye, insert primary and secondary ribs, and do turn backs in both flat and round fibers. This basket starts with reed and finishes with seagrass. Students may not finish this basket in class; all ribs will be inserted, leaving only the weaving to be done. **\*Note: Kits will not be available for this project.**



**Reagan Bitler; Rags to Riches Gourd; All levels; \$45**

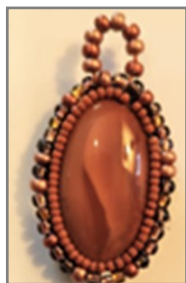
Length of Class – 6 hours

Dimensions – 5"-7" W; 5"-7" T; 3" - 4" deep

Materials – Canteen gourd Vessel, Fabric, and Buttons.

Description – Weavers will create a unique sunflower themed gourd using strips of fabric to create a "rag rim" vessel; will learn to use a variable-temperature wood burner to line the sunflower pattern. Heat-set inks will be used as the color agent for the gourd and sunflower focal point. The gourd vessel will be completed with a "rag rim" and a button embellishment will finish the center of the sunflower to add a primitive/country feel to the vessel.

**\*Note: Kits will not be available for this project.**



**Jane Tolar; Beaded Cabochon Pendant; All levels; \$40**

Length of Class – 6 hours

Dimensions – 2" x 1.5"

Materials – Cabochon stones; glass beads; beading thread; leather backing

Description – Design your own pendant with two rows of seed beads and a custom beaded loop. A selection of seed bead color mixes for each cabochon will be available. Basic beading techniques, including beading a bezel row, will create a unique pendant, ready to show off and wear that day.

Small sharp scissors, small needle nose pliers, small sharp awl and a 6" ruler are needed. A cordless light with magnifier is helpful. Bring leather lacing or other cording to wear the pendant right away. **\*Note: Kits will not be available for this project.**



**Jane Tolar; Bead a Basket Center; All levels; \$40**

Length of Class – 6 hours

Dimensions – 2" x 1.5"

Materials – Cabochon stones; glass beads; beading thread; leather backing

Description – Bead a classic cabochon center with three rows of 11/0 seed beads, a showstopper for your next pine needle basket. Seed beading experience is helpful. Different techniques, including random placement and color bleeding, will be taught. Students will leave class with a beaded center on leather, ready to begin their next coiled masterpiece. The mounted cabochon may be adapted to use in a reed basket. Small sharp scissors, small needle nose pliers, small sharp awl, and a 6" ruler are needed. A cordless light with magnifier is helpful. **\*Note: Kits will not be available for this project.**

**Saturday; October 26, 2024**

**Class times: Weaving (9am-6pm); Lunch (1pm—2pm); Dinner (Served at 6pm)**



**Candy Barnes; Cherry Nantucket Clock; Intermediate; \$95**

Length of Class – 8 hours

Dimensions – 9.75" wide; 2.5" tall

Materials – Cherry custom-made base with engraved numbers, cherry rim and cane

Description – Students will insert tapered staves in a cherry base and will weave with cane over a class mold. A cherry rim will be glued on. **\*Note: Kits will not be available for this project.**



**Candy Barnes; Cherry Nantucket Round Tray; Intermediate; \$90**

Length of Class – 8 hours

Dimensions – 9.75" wide; 2.5" tall

Materials – Cherry base, cherry rim, and cane

Description – Students will insert tapered staves in a cherry base and will weave with cane over a class mold. A cherry rim will be glued on. Students will have options of color accents from materials provided. **\*Note: Kits will not be available for this project.**



**Jane Tolar; Southwest Spirit; Beginner; \$75**

Length of Class – 8 hours; class limited to 6 students

Dimensions – 5" diameter at top; 1.75" tall

Materials – Epoxy clay center with fired cooper medallion inlay, dried Muhley grass, sewing needles (one sharp, one blunt), Brazilian poly cord.

Description – Create a useful, sturdy basket on a desert-inspired clay center with Muhley grass and Brazilian cord. First, design the thread border around the clay center. Then learn to handle and manage this accessible non-invasive coiling material as the basket takes shape. The smooth transitions in 6 rows of 3-color diamond stitches will be emphasized. Students will have choices of center designs and thread colors.

Small sharp scissors, small needle nose pliers and a small ruler are needed, and small diagonal flush cutter is helpful. **\*Note: Kits will not be available for this project.**



**Directions for Creating a Basket "Wash"**

A wash is a diluted mixture of dye and water. This combination produces a pale tan color. Mix in a 64 ounce plastic container with lid: 1 pkg. dark brown Rit® dye, a small amount of gold Rit® dye and 64 ounces of boiling water. When ready to "wash" your basket, put 3 parts of the wash mix and five parts of cold water into a spray bottle and spray your basket. Any dye can be mixed following this method to produce a "washed" look. The mixture can be stored in the 64 ounce container in a cool place.

**Saturday; October 26, 2024**

**Class times: Weaving (9am-6pm); Lunch (1pm—2pm); Dinner (Served at 6pm)**



**Jane Tolar; Brooch the Subject; Intermediate; \$75**

Length of Class – 8 hours; class limited to 6 students

Dimensions – 5" diameter at top; 1.75" tall

Materials – Dyed glycerin pine needles, a vintage brooch or earring already mounted on leather, Brazilian poly cord, glass beads, sewing needle, brass ferrule. (Note: design, jewelry center, color, size, and shape of each basket will vary. )

Description – Featuring a unique charming vintage brooch or earring mounted on leather, this elegant basket is coiled with spiral, wrapped and diamond stitches and a bead gallery row. Each kit will have its own combination of materials selected in advance, including a center jewelry piece, dyed pine needles, beads and thread.

Techniques include stitching to leather, changing stitching and spacing, adding beads, changing thread invisibly, and shaping the basket.

Scissors, small needle nose pliers, small awl if you have one. No water is necessary.



**Elaine Sinclair; Chocolate Kisses; Intermediate; \$90**

Length of Class – 8 hours

Dimensions – 12" base; 49" middle circumference; 12" top diameter; 18" tall w/o handles

Materials – Natural and chocolate brown dyed reed

Description - Made from reed, this basket has a double-walled bottom. Shaping will be stressed; this basket is huge!



**Elaine Sinclair; Chair or Stool; All levels; \$50**

Length of Class – 8 hours

Materials – Natural reed

Description - Anyone wanting to learn seat-weaving may bring their own chair or stool for this class; cleaned and finished. Please indicate which you have when you register. (Large Rocker with bottom and back \$10 more.)

**\*Note: Stool frames can be preordered if needed; please add to registration form.**



**Karen Unroe; Diamond Cross Twill; All levels; \$45**

Length of Class – 8 hours

Dimensions – 7" x 7" woven base; 7" tall

Materials – Waxed linen, natural and dyed reed (choose color when registering: burgundy, brown, or dark green)

Description – The base has a subtle diamond twill pattern. The sides are woven in a stunning diamond cross twill pattern. The weaver will focus on reading a pattern graph, packing evenly, maintaining weaving tension, and shaping. The rim is finished with waxed linen thread.

**Saturday; October 26, 2024**

**Class times: Weaving (9am-6pm); Lunch (1pm—2pm); Dinner (Served at 6pm)**



**Karen Unroe; Hepcat; Intermediate; \$40**

Length of Class – 8 hours

Dimensions – 5" x 5" woven base; 8" tall

Materials – Natural and dyed reed (burgundy, brown, or purple); must choose color when registering.

Description – Hepcat is a "stylish" cathead basket. The combination of dyed spokes with natural weavers along with the section of arrow twining and dyed weavers make the basket "pop."

Concentration on creating the "cathead" ears or feet, shaping, packing rows, and maintaining even spacing of the spokes creates this beauty.



**Cheryl Thomas; Calabass Tote; Intermediate; \$65**

Length of Class – 8 hours

Dimensions – 14" x 9" x 11.5" tall to top of basket

Materials – Natural and dyed reed (some colors choices will be available)

Description – This tote includes chase weaving, paired triple weaving, slotted wooden base, and leather handles.



**Cheryl Thomas; Bend in the River Tote; Intermediate; \$60**

Length of Class – 8 hours

Dimensions – 11" x 8" x 10" tall to top of basket

Materials – Black and natural only

Description – This tote includes start and stop twill, paired triple weaving, slotted wooden base, and leather handles.



### *How to make your own walnut stain*

*Start with a small plastic bucket (preferably with a lid) in which to store your brew. There's no need to hull the nuts; broken and/or split hulls will produce a darker dye. Place the nuts/hulls in a mesh onion bag. Tie with a strong cord and tie this cord to the handle of the bucket.*

*Cover with water and let soak till you have a nice brown dye bath; about 4-7 days—experiment with the color. The bag should keep the dye from getting too messy but if it still gets chunks of hull in it, strain out the pieces.*

*Place your basket in the dye until it is as dark as you desire; remember the color will be much lighter when dry. You can use the dye bath over and over again; add more hulls as needed. Add vinegar (or ammonia) to keep the mold down during long-term storage. Keep the bucket covered; store where nothing can get into it—especially raccoons!*

**Saturday; October 26, 2024**

**Class times: Weaving (9am-6pm); Lunch (1pm—2pm); Dinner (Served at 6pm)**



**Reagan Bitler; Sunsational Sunflower Gourd Bowl ; All levels; \$45**

Length of Class – 4 hours (9am—1pm)

Dimensions – 7" W; 5"-6" T; 3"- 4" deep

Materials – Pre-cut Gourd Bowl, Alcohol Inks, Seagrass, and Gourd Shard Embellishment

Description – Students will create a small gourd vessel using alcohol inks as the primary coloring agent and will learn how to add a seagrass rim. A sunflower gourd shard will be colored using heat-set inks and affixed to the gourd to make a Sunsational Sunflower focal point of the gourd vessel. **\*Note: Kits will not be available for this project.**



**Reagan Bitler; Colors of Fall Lidded Gourd Bowl ; All levels; \$45**

Length of Class – 4 hours (2pm—6pm)

Dimensions – 5"-6" across; 10"-11" tall

Materials – Round Cannonball Gourd, Alcohol Inks, Cork, Wood, Seagrass, Coconut Fiber, and Drawer Pull

Description – Students will create a unique lidded gourd vessel that incorporates a basic technique on the gourd; they will learn how to use alcohol inks to create a vessel with vivid fall colors. Coconut fiber and natural seagrass will be available for students to weave with as they practice the weaving process on a gourd and the process for creating a tight fitting lidded that will be adorned with an acorn lid pull.

**\*Note: Kits will not be available for this project.**



**Rami McKinney; RéColter; All levels; \$50**

Length of Class – **\*\*12 hours class\*\***

**\*\*Saturday: 8 hours\*\* and \*\*Sunday: 4 hours\*\*; maximum of 8 students**

Dimensions – 15" x 10" x 10"

Materials – 10" oak round hoop; 10"x15" oak oval hoop, natural reed

Description – Oval hoops and a variety of reeds (f/o, o/o, rr) are used to weave this gathering style rib basket. Learn to make a God's Eye, insert lots of ribs & do turn-backs with flat fiber. This is a big basket so bring your patience, basic basket weaving tools & small container for water. Students may not finish basket in class time. All ribs will be inserted, leaving only weaving to be done.

**\*Note: Kits will not be available for this project.**



### **Tips about Handles**



- **Never insert the ears of a swing, bushel, or notched handle under all the rows of weaving. Not only is this difficult, it usually distorts the shape of your basket. The rim holds the handle in place so anchoring the ends under one to three rows is all that is needed to keep the ears from sticking out.**
- **When you have a wire handle that has a little rust, spray some WD-40 on a paper towel and wipe the rust off.**

**Sunday, October 27, 2024**

**Class times: Weaving (9am-12noon); Lunch (12noon)**



**Rami McKinney; RéColter; must have taken Saturday class**

Length of Class – **\*\*12 hours class\*\***

**\*\*Saturday: 8 hours\*\* and \*\*Sunday: 4 hours\*\*;** maximum of 8 students

Dimensions; Materials; Description – See Saturday class descriptions.



**Karen Unroe; Biscuit Basket with Braided Rim; All levels; \$35**

Length of Class – 4 hours

Dimensions – Woven base, 4" tall ; 10" diameter

Materials – Natural and dyed reeds (burgundy, brown, dark green, and red). Mark your choice on the registration form.

Description – Just the right size to hold those scrumptious homemade biscuits or rolls at your next family gathering. The base is twined with a three rod wale 'lip.' The braided rim adds a classic finish to this beautiful basket.



**Karen Unroe; Basket tote; All levels; \$48**

Length of Class – 4 hours

Dimensions – 12" L; x 5" deep; 8" to the top of basket; 13" to top of handles

Materials – Natural and dyed reeds; color choices are: dark green/brown, blue/red, or purple/teal. Mark your choice on the registration form.

Description – The Basket Tote is a fun weave with color. This basket has a solid base using the "crow's feet" technique. The handles are made from the spokes and then wrapped. This basket can be used to hold a crochet project or to carry your Bible to church on Sundays.



**Lara Lawrence; Nature's Angels; All levels; \$40**

Length of Class – 4 hours

Dimensions – Approximately 5"- 6" across and 7"- 8" tall.

Materials – Natural and dyed reeds; items found in nature described below

Description – In this class you will weave 2 Angels from items found in nature. The heads are from spinner gourds and will have the stakes already inserted. The gourd head, grapevine arms, wings and halos, moss hair, dried flowers and reed are all grown in nature. There will be a variety of reed colors and decorations to choose from in class.



**Never put reed in your mouth or let your pet drink out of your water bucket. Reed is treated with insecticides before it is imported. Use the soak water of non-dyed reed to give your plants a drink and to pass any insecticide on to the plant.**

**Sunday; October 27, 2024**

**Class times: Weaving (9am-12noon); Lunch (12noon)**



**Candy Barnes; Nantucket Coaster; Beginner level; \$75**

Length of Class – 4 hours

Dimensions – 4.5" W; 3.25" T

Materials – Double-walled, stainless steel wine coaster, cherry base, and cherry rim

Description – Students will insert tapered staves in a cherry base and will weave with cane over a double-walled stainless steel wine coaster that fits a wine bottle. A Cherry turned rim will be glued on. Students will have color accent options; teacher will supply tools.



**Candy Barnes; Pencil Cup ; Beginner level; \$35**

Length of Class – 4 hours

Dimensions – 4" W; 5.5" T

Materials – Mesh Pencil cup, Poplar Wood rim & base, and Cane

Description – Students will insert staves into a poplar wood base and will weave over a black mesh pencil cup. A poplar turned rim will be glued on. Students will have a choice of being creative with color accents.



**Elaine Sinclair; Morgan's Mini Me; All levels; \$58**

Length of Class – 4 hours

Dimensions – 4" wide; 9" long; 9" tall; 32" circumference at top

Materials – Natural and dyed reeds (please choose color when registering: dark green, blue, natural)

Description – Students will learn how to weave a twill pattern and wrap handles made from spokes.



**Elaine Sinclair; Paper Rosie; All levels; \$55**

Length of Class – 4 hours

Dimensions – 8" x 8" herringbone twill base; 10" height to top of basket; 41" circumference at top

Materials – Natural reed, 12" push handle, and red roses/green vine embellishments

Description – Students will learn how to lay out a simple herringbone base then as you come up the sides you will gently shape it as you let the sides flair out.

**Sunday; October 27, 2024**

**Class times: Weaving (9am-12noon); Lunch (12noon)**



**Cheryl Thomas; Mediterranean Blues; Advanced; \$65**

Length of Class – 4 hours

Dimensions – 13" diameter; 7" tall to top of basket

Materials – Natural and dyed reeds

Description – Weavers will practice a 9-count twill pattern and triple twining with this basket woven a wooden base with leather handles.



**Cheryl Thomas; Country Christmas Primitive Basket; Beginner; \$38**

Length of Class – 4 hours

Dimensions – 10" L, 4" deep; 10" tall to top of handle

Materials – Natural and dyed reeds

Description – Weavers will practice weaving a basket with fillers in the base, paired triple twining, and overlays. Weavers will have a choice of tags at classtime.



**Jane Tolar; All That Glitters ornament; All levels; \$25**

Length of Class – 4 hours

Dimensions – 3.5"

Materials – Treated long leaf pine needles, maple or birch slice rimmed in sisal twine, Brazilian poly cord, sewing needle, brass gauge, beads, earrings and other holiday embellishments.

Description – Make a holiday ornament on a 3" slice of natural maple or birch, stitching long leaf pine needles with colorful Brazilian cord. This is great beginner coiling project. Using pine needles with attached sheaths is a new technique and adds color, texture and dimension. Many different color and finish choices will be available. If you have your own beads and holiday bling, please bring them. Sharp scissors and small needle nose pliers are needed.



**Jan Hensley; Birdhouse Basket; All levels--especially beginners; \$42**

Length of Class – 4 hours

Dimensions – 8" L x 5.5" D x 7" T

Materials – D handle, Natural and dyed reeds; birds and birdhouses

Description – This little basket is fun to weave and keep or give as a gift. A variety of birdhouses painted in different colors with matching birds will be available to personalize your basket.



**Be an early bird! Register by Aug. 1, 2024, to save!**





## WVBA Membership

January 2, 2024 – December 31, 2024

(Please print)



Name \_\_\_\_\_

Address \_\_\_\_\_

City \_\_\_\_\_ State \_\_\_\_\_ Zip+4 \_\_\_\_\_

Phone \_\_\_\_\_ E-mail \_\_\_\_\_

\_\_\_\_ I am a member of a West Virginia guild.

(Name of Guild) \_\_\_\_\_

\_\_\_\_ I am NOT a member of a West Virginia guild.

**Basketry Business Name** \_\_\_\_\_

(A business that sells basket supplies, basketry related items, or baskets)

\_\_\_\_ I have joined as a teacher/business member and I would like my basketry business listed in the annual membership booklet.

**Basketry Business Phone #** \_\_\_\_\_

**Basketry Business Web Site** \_\_\_\_\_

New Member \_\_\_\_ Renewal \_\_\_\_

Are you a basketry teacher? \_\_\_\_ yes \_\_\_\_ no

Are you a vendor? \_\_\_\_ yes \_\_\_\_ no

Membership is for: (Please check those that apply.)

\_\_\_\_ **Individual membership** \$20.00 for 2024 Dues.

Entitles you to Newsletter, and receive Convention booklet.

\_\_\_\_ **Individual under 18** on Jan. 1 or 80+ years \$15.00

\_\_\_\_ **Teacher/Business Membership** \$25.00. Entitles you to the same as individual membership, plus is mandatory to teach classes, vend, or participate in the Market Place at Convention.

**Paying by** \_\_\_\_ Cash \_\_\_\_ Check # \_\_\_\_\_ **Please make checks payable to WVBA**

**Send check and application to :**

**Nancy Sealey**

**2768 Emmons Ave.**

**Huntington, WV 25702**

# **WVBA CONVENTION REGISTRATION FORM**

Please mark your preferences of classes (1-3) for each day.

Friday; Oct. 25, 2024

Basket Name	Color (if applicable)	Teacher	Cost
1.			
2.			
3.			

Saturday; Oct. 26, 2024

Basket Name	Color (if applicable)	Teacher	Cost
1.			
2.			
3.			

Sunday; Oct. 27, 2024

Basket Name	Color (if applicable)	Teacher	Cost
1.			
2.			
3.			

**Kits** to be picked up at the Convention; **check the teacher's project description to make sure they will be offering kits.**

Basket Name	Color (if applicable)	Teacher	Cost
1.			
2.			
3.			
4.			

**Stool frame** for Elaine Sinclair's class on Saturday, Oct. 26; bring your own or pre-order below:

How many?	Cost per stool frame	Total Cost
	\$30	

**WVBA Logo Products Pre-order: (T-shirts are maroon; aprons and vests are navy; tote bags are navy and cream.)**

Apron (\$15): \_\_\_\_\_ Tote Bag (\$12): \_\_\_\_\_

T-Shirts (\$16): S: \_\_\_\_\_ M: \_\_\_\_\_ L: \_\_\_\_\_ XL: \_\_\_\_\_; T-Shirts (\$19): 2XL: \_\_\_\_\_ 3XL: \_\_\_\_\_ 4XL: \_\_\_\_\_

Long-Sleeve T-Shirts (\$18): S: \_\_\_\_\_ M: \_\_\_\_\_ L: \_\_\_\_\_ XL: \_\_\_\_\_; Long-Sleeve (\$20): 2XL: \_\_\_\_\_ 3XL: \_\_\_\_\_ 4XL: \_\_\_\_\_

Polar Fleece Vests **Ladies**: (\$35): XS: \_\_\_\_\_ S: \_\_\_\_\_ M: \_\_\_\_\_ L: \_\_\_\_\_ XL: \_\_\_\_\_; (\$37) 2XL: \_\_\_\_\_ 3XL: \_\_\_\_\_ 4XL: \_\_\_\_\_

Polar Fleece Vests **Unisex**: (\$35): XS: \_\_\_\_\_ S: \_\_\_\_\_ M: \_\_\_\_\_ L: \_\_\_\_\_ XL: \_\_\_\_\_; (\$37) 2XL: \_\_\_\_\_ 3XL: \_\_\_\_\_ 4XL: \_\_\_\_\_

Registration fee\*: \$ \_\_\_\_\_

Logo products and stool frames: \$ \_\_\_\_\_

TOTAL AMOUNT: \$ \_\_\_\_\_

Name: \_\_\_\_\_

Address: \_\_\_\_\_

City & State: \_\_\_\_\_ Zip: \_\_\_\_\_

Phone: \_\_\_\_\_ Email: \_\_\_\_\_

\* Make sure to enclose the appropriate registration fee per the "Registration Instructions" page.

Please complete this form and return it along with your check (made payable to WVBA) and a pre-addressed, stamped envelope to: **Nancy Sealey; 2768 Emmons Ave.; Huntington, WV 25702**