

Home Safety Checklist

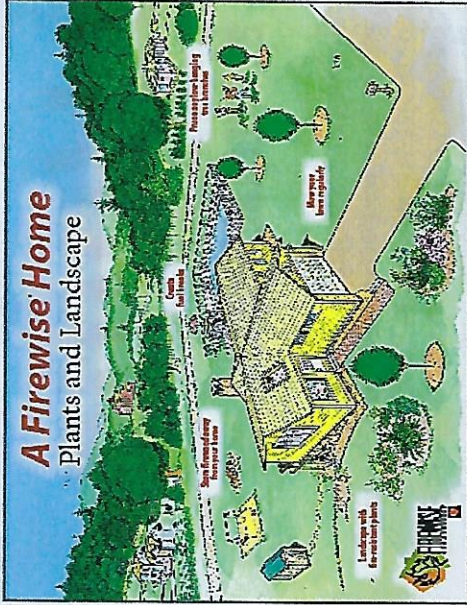
Simple fixes from roof to foundation to make your home safer from embers and radiant heat.

HOME SAFETY CHECKLIST

- Clean roofs and gutters of dead leaves, debris and pine needles that could catch embers.
- Replace or repair any loose or missing shingles or roof tiles to prevent ember penetration.
- Enclose under-eave and soffit vents or screen with metal mesh to prevent ember entry.
- Cover exterior attic vents with metal wire mesh no larger than 1/8 inch to prevent sparks from entering the home.
- Repair or replace damaged or loose window screens and any broken windows.
- Screen or box-in areas below patios and decks with wire mesh to prevent debris and combustible materials from accumulating.
- Move any flammable material away from wall exteriors – mulch, flammable plants, leaves and needles, firewood piles – anything that can burn.
- Remove anything stored underneath decks or porches.

A Firewise Home

Plants and Landscape



For More Information

For more information about how to protect your home and property, as well as Firewise plant lists and other resources, visit the Firewise website at www.firewise.org, and see the "homeowners" section.

For more tips on what to do when wildfire is approaching and how to safely evacuate, visit the Ready, Set, Go! website sponsored by the International Association of Fire Chiefs at www.wildlandfireshg.org. Talk to your local fire department to learn more about specific wildfire risks in your area.

Saving Lives and Property from Wildfire!



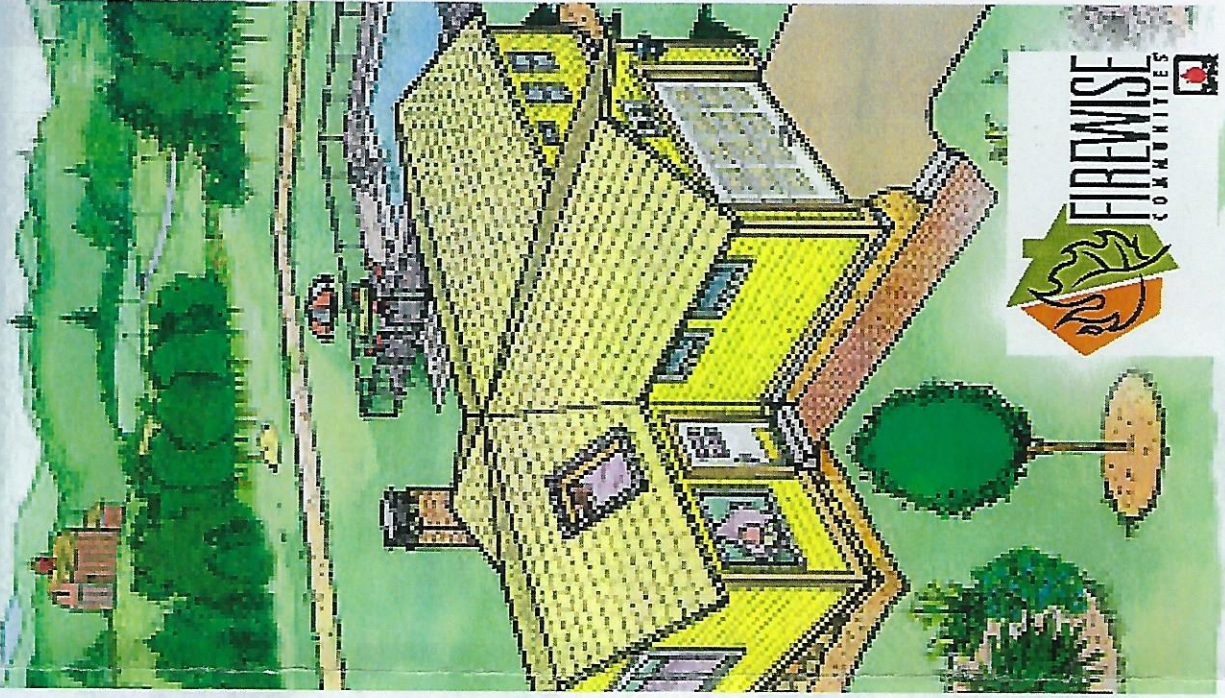
Firewise® is a program of the National Fire Protection Association. This publication was produced in cooperation with the USDA Forest Service, USD Department of the Interior and the National Association of State Foresters. NIFPA is an equal opportunity provider. Firewise® and Firewise Communities/USA are registered trademarks of the National Fire Protection Association, Quincy, MA 02169.

© Copyright 2012, NFPA

FWC22612

How to Have a Firewise Home

You can make your home safer from wildfire. Learn how with these helpful tips!



A Firewise® Home

FIREWISE LANDSCAPING

1. Home Ignition Zone

Keep leaves and needles off your roof and deck. Create a fuel-free area within 3-5 feet of your home's perimeter. From 5 feet to a minimum of 30 feet out, thin and space vegetation, remove dead leaves and needles, prune shrubs and tree limbs. Keep areas around decks, sheds, fences and swing sets clear of debris and vegetation.

2. Landscaping and Firewise Plants

To prevent fire spread, trim back branches that overhang structures and prune branches of large trees up to 6 to 10 feet from the ground. Remove plants containing resins, oils, and waxes; make sure organic mulch is at least 5 feet from structures. Choose Firewise plants – find lists at www.firewise.org or from your local Cooperative Extension service.

BE PREPARED

3. Disaster Plan

Develop, discuss and practice an emergency action plan with everyone in your home. Include details for pets, large animals and livestock. Program cell phones with emergency numbers. Know two ways out of your neighborhood and have a pre-designated meeting place. Have tools such as a shovel, rake, axe, handsaw, or chainsaw available, and maintain an emergency water source. Always leave if you feel unsafe – don't wait to be notified.

4. Emergency Responder Access

Identify your home and neighborhood with legible, clearly marked street names and numbers. Make your driveway at least 12 feet wide with a vertical clearance of 15 feet and a slope of less than 5 percent to provide access to emergency vehicles.

FIREWISE CONSTRUCTION

5. Fire-Resistant Roof Construction

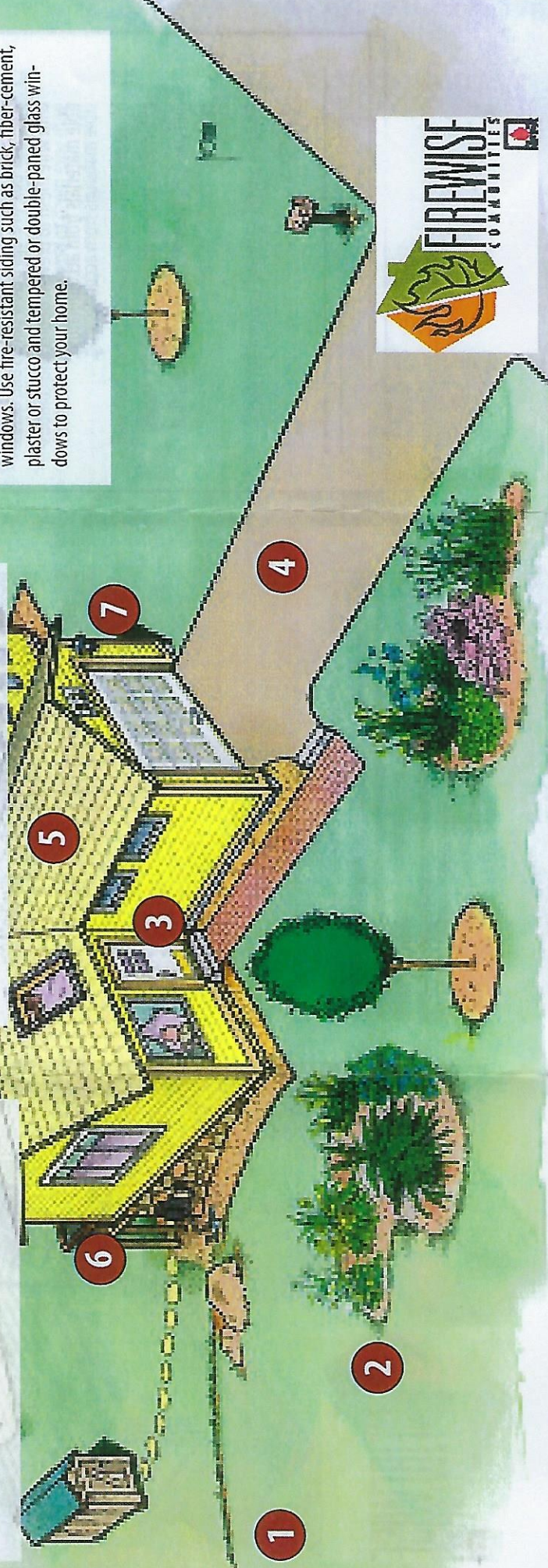
Use fire-rated shingles such as asphalt, metal, slate, clay tile or concrete products. A fire-resistant sub-roof adds protection. Box in eaves, but provide adequate ventilation to prevent condensation and mildew. Roof and attic vents should be screened to prevent ember entry.

6. Fire-Resistant Attachments

Any attachments to your home such as decks, porches, and fences must be fire-resistant. If not, your entire home is vulnerable to ignition.

7. Fire-Resistant Walls and Windows

Embers can collect in small nooks and crannies and ignite combustible materials; radiant heat from flames can crack windows. Use fire-resistant siding such as brick, fiber-cement, plaster or stucco and tempered or double-paned glass windows to protect your home.



Ember Awareness Checklist

- 1** **Roofs**
Replace wood shake and shingle roofs with fire-resistant types such as composition, metal and tile.
- 2** **Roof Openings**
Plug openings in roof coverings, such as the open ends of barrel tiles, with non-combustible materials.
- 3** **Roof Debris**
Remove plant debris, such as pine needles, leaves, branches and bark, from the roof.
- 4** **Skylights**
Replace plastic skylights with types constructed of double-pane glass. One of the panes should be tempered glass. Close skylights if wildfire is threatening.
- 5** **Spark Arrester**
Install an approved spark arrester on chimneys.
- 6** **Windows**
Replace single-pane, non-tempered glass windows with multiple-pane, tempered-glass types. Close all windows if wildfire is threatening.
- 7** **Vents**
Cover attic, eave and foundation vents with 1/8-inch wire mesh or install new vent types designed to prevent ember entry. If wildfire is threatening, consider covering vent openings with pre-cut plywood or aluminum foil folded several layers thick and stapled.
- 8** **Rain Gutters**
Keep rain gutters free of plant debris during fire season. Consider using rain gutter covers to reduce maintenance.
- 9** **Siding and Trim**
Fill gaps in siding and trim materials with a good quality caulk and replace building materials in poor condition.
- 10** **Woodpiles**
Move firewood stacks and scrap lumber piles at least 30 feet from the house or other buildings.
- 11** **Patio Furniture**
Place combustible patio furniture, such as lounge chairs, tables and hammocks, inside the house or garage if wildfire is threatening.
- 12** **Decks**
Replace any weathered or decayed materials, as well as deck boards that are less than one inch thick, with thicker boards in good condition. Use metal flashing between the deck and the house. Routinely remove plant debris from the gaps between deck boards, the gap between the deck and the house, and lying on top of the deck. Remove plant debris, woodpiles and other easily ignited materials from under decks. Consider enclosing the open sides of the deck with ignition-resistant siding materials that are properly vented or 1/8-inch wire mesh to reduce maintenance, the amount of windblown debris and deter ember entry. Do not use wooden lattice to enclose decks.
- 13** **Porch and Deck Accessories**
Remove combustible materials from the porch and deck if wildfire is threatening. This includes newspapers, wicker baskets, door mats, pine cones and dried flower arrangements. Move barbecues with small propane tanks into the garage. Place larger tanks that are 5 gallons or more away from the house where they can safely vent.
- 14** **Flowerboxes**
Remove wooden flowerboxes from beneath windows if wildfire is threatening.
- 15** **Eaves**
Cover open eaves with sheathing, such as plywood or fiber-cement board. Use tongue and groove joints or other intricate joint types and do not use butt joints.
- 16** **Flowerbeds**
Replace wood mulches with noncombustible types and remove plant debris, including dried grass and flowers, dead leaves and dead branches from flowerbeds next to the house, other buildings and next to wooden fences. Replace ornamental junipers with low-growing deciduous shrubs or flowers under irrigation.
- 17** **Vehicles**
Close vehicle windows. Back into the garage and close the garage door or park away from the house.
- 18** **Garage Door**
Adjust garage doors to achieve as tight a fit as possible with the door frame. Consider using trim around the garage door opening to reduce the size of the gaps. Close the garage door if wildfire is threatening.
- 19** **Garbage Cans and Recycling Bins**
Use metal garbage cans covered with tight fitting lids near the house or other buildings. Move newspaper recycling bins indoors.
- 20** **Fences**
Maintain wooden fences in good condition and create a noncombustible fence section or gate next to the house for at least five feet.

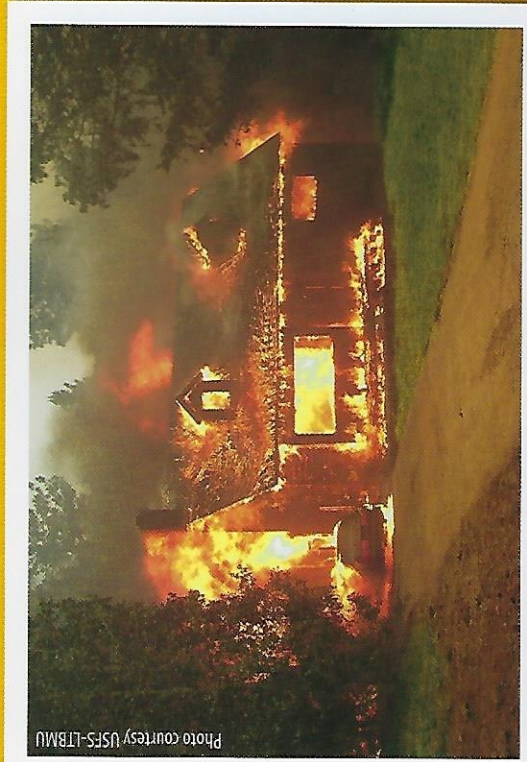


Photo courtesy USFS-LTRMU

This house was ignited by burning embers landing on vulnerable spots. Notice the adjacent forest is not burning.