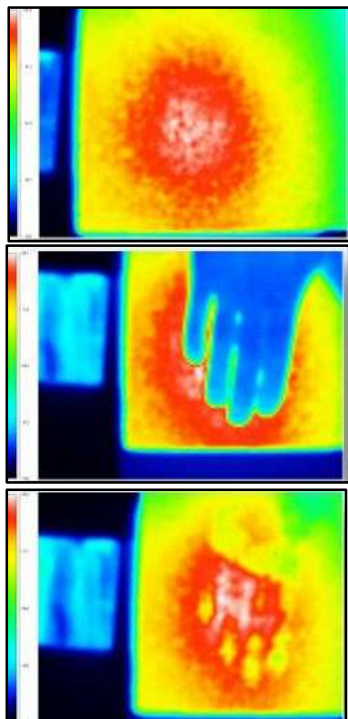


INSULATION FOR PERSONNEL PROTECTION

THERMACOAT - 400

ThermaCoat – 400 is a Water-borne two part thermally insulated liquid applied coating.

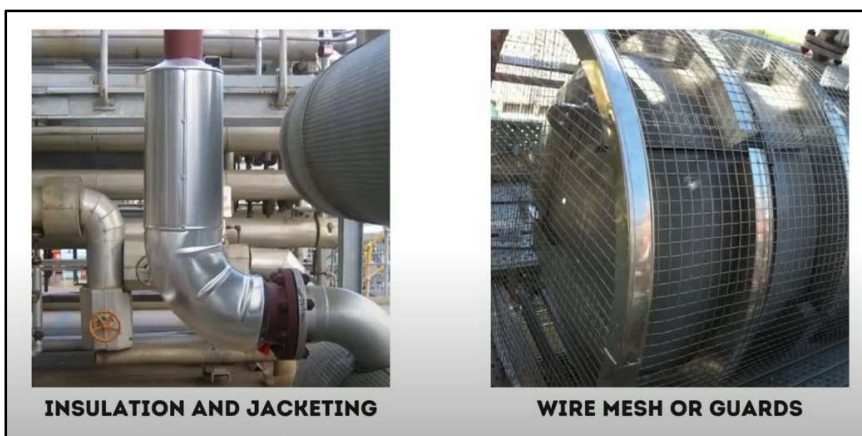
1. Water base low VOC
2. Apply with brush, roller and paint spray.
3. Can be applied while the assets are in operation.
4. Corrosion resistant
5. Thermal Insulation
6. Sustainable



What is Insulation for Personnel Protection

OSHA required that all heated surfaces including heated pipes and water pipes that are within 7 ft of the floor or working platform or within 15 inches measured horizontally from stairways, ramps or fixed ladders shall be covered with an insulating material or guarded in such a manner to prevent contact.

Common Methods for Personnel Protection System



Covering hot or cold surface with specific insulation and jacketing materials

- Difficult and expensive
- The insulated surface is not visible, subject to CUI

Stainless steel or painted steel mesh guards

- Bulky
- Limited access to the asset

SOLUTION – INSULATED COATINGS THERMACOAT - 400

ThermaCoat – 400 Thermally Insulated protective coatings can be applied in multiple coats to achieve OSHA safe touch standard. Other advantages:

- Easier to apply than traditional insulation material
- No expensive downtime - apply while the assets are operating
- Sustainable and repairable; unlike traditional insulation, ThermaCoat - 400 can be re-applied over and over
- No insulation material to discard into a landfill
- No need for a corrosion resistant layer on steel surface
- Environmentally Friendly water-borne system
- OSHA safe touch compliant