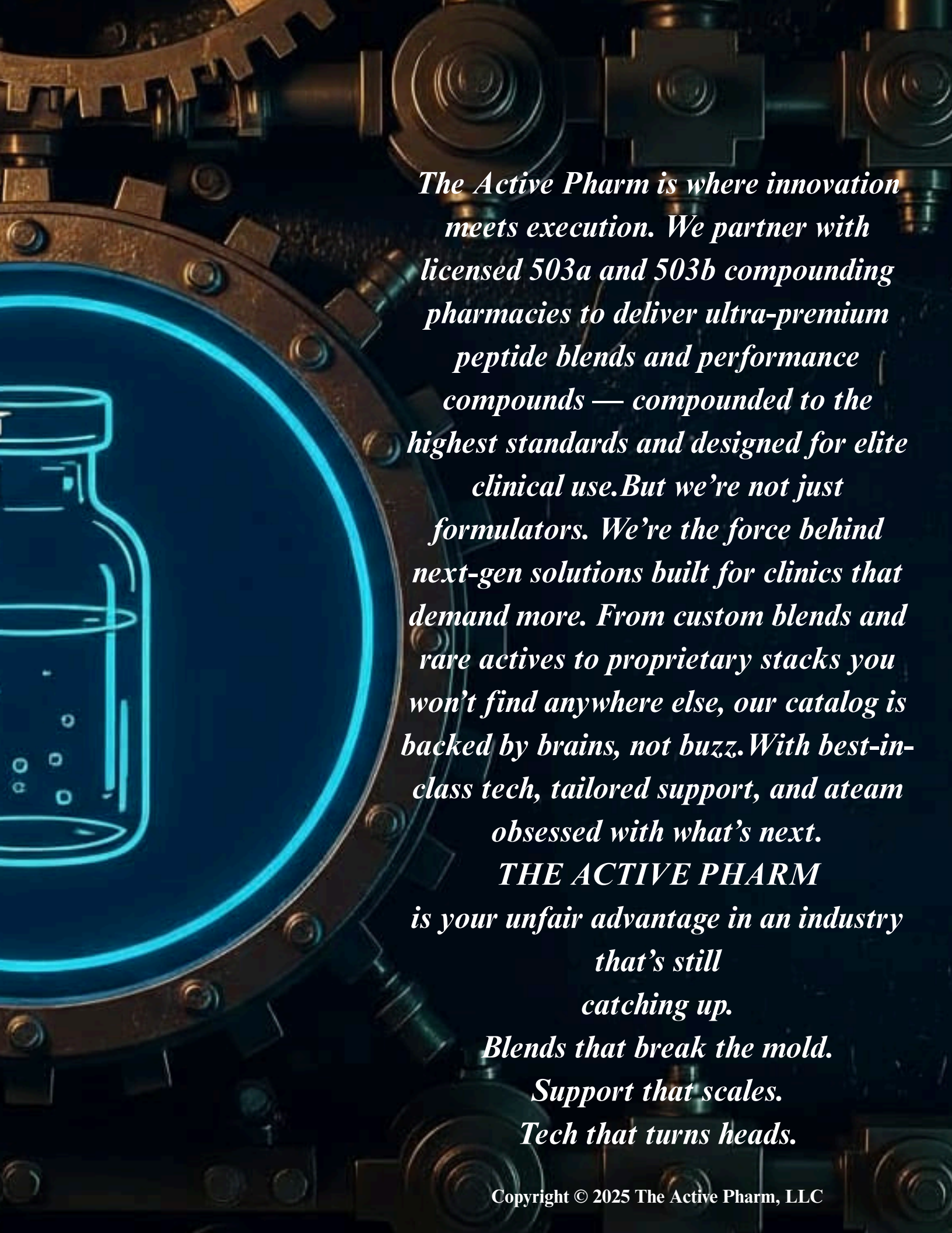


# THE ACTIVE PHARM

THE SCIENCE OF HUMAN POTENTIAL  
EXCLUSIVE BLEND CATALOGUE





*The Active Pharm is where innovation meets execution. We partner with licensed 503a and 503b compounding pharmacies to deliver ultra-premium peptide blends and performance compounds — compounded to the highest standards and designed for elite clinical use. But we're not just formulators. We're the force behind next-gen solutions built for clinics that demand more. From custom blends and rare actives to proprietary stacks you won't find anywhere else, our catalog is backed by brains, not buzz. With best-in-class tech, tailored support, and a team obsessed with what's next.*

**THE ACTIVE PHARM**

*is your unfair advantage in an industry that's still catching up.*

*Blends that break the mold.*

*Support that scales.*

*Tech that turns heads.*

## **Table of Contents**

### **Exclusive Peptide Blends**

**Fountain of Youth** – Regenerative Anti-Aging & Recovery

**Kali** – GLP Support & Metabolic Shield

**Adonix** – Fat Loss, Muscle Tone, & Metabolic Recomposition

**Apex** – Strength, Repair, & Hormonal Optimization

**Empress** – Menopausal & Female Hormonal Balance

**Valkyr** – Elite Recovery & Injury Repair

**Prometheus** – Deep Sleep, GH Optimization & Recovery

**Inferno** – Fat Loss & Metabolic Drive

**Kälm** – Cortisol Reduction & Neural Reset

**Love & Happiness** – Oxytocin & Connection Support

**Lucid** – Cognitive Clarity & Mental Performance

**Samson & Delilah** – Hair Restoration & Cellular Repair

**Hypnøs** – Sleep & Recovery Enhancement

**Sentinel** – Immune Defense & Inflammation Control

**Atlas** – Advanced Muscle Recomposition

**Bodhi** – Calm Focus & Neural Balance

**Hyperion** - Fat loss, Energy & Recovery

**Selene** – Female Sculpting & Rejuvenation

**Helios** - Men's Sculpting & Rejuvenation

**Crave** - Desire & Intimacy

**Clinical Reference**

**Cycling + Dosing Guide**

**Disclaimer & Professional Use Notice**

A man and a woman in medieval armor stand in front of a fountain. The man is on the left, wearing a helmet and a breastplate, with a sword at his waist. The woman is on the right, also in armor, with a helmet and a breastplate. The fountain is in the background, with water flowing from a central spout. The scene is set in a lush, green environment.

# Fountain of Youth<sup>®</sup>

Turn back the clock. Rebuild from within.

Fountain of Youth is a full-spectrum regenerative blend designed to restore cellular vitality, accelerate healing, and reverse visible signs of aging — from skin and joints to sleep and energy. It's built for anyone chasing recovery, performance, and longevity in one powerful protocol.\*

## *What's Inside each 5ml Vial:\**

- GHK-Cu 50mg— Copper peptide that revitalizes skin, hair, collagen, and mitochondria
- BPC-157 10mg - Accelerates repair in joints, muscles, gut, and connective tissue
- TB-500 10mg – Boosts circulation and systemic recovery at a cellular level
- Epitalon 10mg – Supports deep sleep, telomere health, and biological longevity
- 

## *Who It's For:\**

- Anyone noticing signs of aging — fine lines, thinning hair, fatigue
- Those recovering from stress, injury, or cosmetic procedures
- Patients who want to move better, feel younger, and glow



# Kalí<sup>©</sup>

**The Fierce Protector of Metabolism**

*In Hindu legend, Kali is the goddess of transformation. Fierce, unyielding, unstoppable. She destroys what no longer serves and clears the path for renewal.*

**Our Kali blend embodies that same fire: a shield for patients on GLP therapy, protecting their strength, metabolism, and vitality while easing the journey to lasting transformation.**

#### **What's Inside per 5mL Vial\***

**BPC-157 (10mg)** — Repairs gut lining, eases nausea, reduces bloating, and calms GI distress so patients stay on therapy.

**MOTS-c (10mg)** — Restores mitochondrial energy, improves insulin sensitivity, and combats GLP-induced fatigue.

**TESAMORELIN (5mg)** — Preserves lean muscle and metabolic strength during GLP-1 therapy by stimulating endogenous growth hormone release. Helps counteract GLP-associated muscle loss, “skinny-fat” appearance, and metabolic slowdown by supporting protein synthesis, lipolysis, and tissue integrity. Enhances body composition quality so weight loss reflects fat reduction—not strength or vitality loss.

**5 AMINO 1 MQ (10mg)** - Helps maintain metabolic responsiveness during GLP-1 therapy by supporting cellular energy balance and reducing adaptive metabolic slowdown, aiding long-term consistency and results.

#### **Has Shown Incredible potential for:\***

**Defends against nausea, bloating, and GI side effects of GLPs**

**Shields lean muscle from wasting and “skinny-fat” risk**

**Rekindles cellular energy to fight fatigue and burnout.**

**Keeps metabolism flexible, adaptive, and responsive**

**Prevents weight loss plateaus for sustained results**

**Extends the effectiveness and tolerability of GLP therapy.**

#### **Who It's For**

**Patients on Semaglutide, Tirzepatide, Retatrutide, or other GLPs.**

**Clinics seeking to reduce dropout rates due to side effects**

**Anyone who wants not just weight loss, but lasting metabolic renewal.**

# ADONIX<sup>©</sup>

*The Aesthetic Code, Rewritten.*

*Built for those chasing the ultimate physique, Adonix is your modern-day alchemy — a precision blend of science-backed peptides that ignite fat loss, dial up muscle tone, and prime your body to burn like it was built to.\**

**This isn't a quick fix. It's a full-body recomposition protocol that whispers ancient god but moves like a modern machine.\***

## **What's Inside per 5ml Vial:\***

**Tesamorelin 10mg**— the visceral fat assassin. Cranks up growth hormone and melts stubborn belly fat from the inside out.

**Ipamorelin 10mg** — smooth, stable GH release without the cortisol spike. Recovery and repair on autopilot.

**AOD-9604 10mg** — a fragment of HGH dialed specifically for fat loss. Think lipolysis on demand

**MOTS-C 10mg**— the mitochondrial optimizer. Revives metabolic function, boosts insulin sensitivity, and fuels cellular energy from the core.

## **What It Does:\***

**Targets deep, hormonal fat (the kind cardio ignores)**  
**Preserves lean muscle while you cut** **Enhances energy, recovery, and fat oxidation**  
**Rebalances your body's natural hormone flow without harsh disruption**  
**Helps restore your edge — physically and metabolically**  
**Whether you're chasing a beach body or the mirror's double-take, Adonix isn't about hype — it's about results that look sculpted, not synthetic.**

\*Not evaluated by the FDA, Results may vary. Copyright © 2025 The Active Pharm, LLC



# APEX<sup>®</sup>

*Rise. Repair. Reclaim.*

*APEX is your all-in-one upgrade for strength, fat loss, and recovery. This blend combines powerful hormone support with full body repair - engineered for those who train hard, recover slow, or want to look and feel dialed in again.*

## **What's Inside per 5ml Vial\***

**Tesamorelin 10mg | targeted visceral fat and boosts GH/IGF-1 naturally**

**CJC-1295 + Ipamorelin 6mg/12mg | amplifies growth hormone pulses for deeper recovery, lean muscle, and better sleep**

**BPC-157 10mg | speeds tissue repair, soothes inflammation, and protects joints and gut**

## **Who It's For\***

**High-performers chasing lean muscle without the crash  
Anyone cutting fat while staying strong  
Those bouncing back from injury, burnout, or hormone drop-off**

# Empress<sup>©</sup>

*This isn't about managing rules*

Empress is a precision peptide blend created for women navigating menopause with strength, clarity, and control. It targets the real stuff — fatigue, bloating, hormone crashes, thinning hair — and helps you feel powerful in your own skin again.\*

## WHATS INSIDE EACH 5mL VIAL:

**MOTS-c 10mg** | Reignites sluggish energy, fights hormonal weight gain, and helps restore metabolic balance when fatigue and burnout hit hard.\*

**BPC-157 10mg** | Repairs the gut lining to ease bloating, soothe digestive stress, and reduce the kind of low-grade inflammation that throws everything off during menopause.\*

**GHK-CU 50mg** | Boosts collagen to improve skin firmness and elasticity, while supporting thicker, stronger hair — especially helpful when thinning or dryness becomes noticeable.\*

**KISSEPTIN-10 2mg** | Naturally nudges your hormonal system back into balance — lifting mood, increasing drive, and bringing back that sense of internal rhythm you thought was gone.\*



# Välkyr<sup>©</sup>

*Heal Like A Warrior. Rise Like A Legend*

**Forged for recovery and trusted by the relentless,  
Välkyr is your body's elite repair protocol.  
Designed for those who refuse to stay broken.**

## **What's In each 5ml Vial:\***

**BPC-157 (10mg)**

**Peptide known for repairing  
gut lining, muscle, tendon, and soft tissue**

**TB-500 (10mg)**

**A powerful thymosin peptide  
that promotes cellular regeneration, reduces  
inflammation, and improves flexibility**

## **What It Does\***

**Speeds recovery from injury or surgery**

**Reduces joint pain, swelling, and  
inflammation**

**Boosts tissue, tendon, and muscle repair**

**Supports flexibility, mobility, and structural  
integrity**

**Optimized for athletes, recovery patients, and those  
who never slow down**

# PROMETHEUS<sup>©</sup>

A detailed sculpture of Prometheus, the Titan from Greek mythology, is the central focus. He is depicted as a muscular, bearded man with long, curly hair, bound by his wrists to a jagged rock. He holds a glowing, fiery orb in his left hand, which illuminates his face and the surrounding area. The background is dark, making the figure and the fire stand out prominently.

Steal fire from Olympus. Wake Renewed

Prometheus defied Olympus to bring fire, the spark of life, to mankind.

This blend taps that same rebellious energy. Designed to ignite the body's natural GH pathways, Prometheus helps you sleep deeper, recover faster, and come back stronger. Whether you're optimizing performance or turning back the biological clock, this blend is your secret weapon.

What's in it per 5ml vial:

**CJC-1295 6mg** - Stimulates natural GH release and enhances recovery through longer-acting growth hormone signaling.

**Iпамorelin 12mg** - Potent GHRP that supports lean muscle development, cellular repair, and deep recovery while minimizing cortisol response.

What It Does:

- Stimulates natural growth hormone pulses
- Enhances deep sleep and REM recovery
- Promotes lean muscle, fat metabolism, and cellular repair
- Boosts skin elasticity, joint health, and overall vitality

# **Inferno<sup>®</sup>**

**FAT LOSS MEETS FIREPOWER**

This isn't your average "shred" blend — it's a biochemical forge built for those who burn hotter than the rest.

Inferno is a precision-engineered peptide fusion designed to incinerate fat, elevate focus, and ignite relentless energy — without stimulants, side effects, or compromise.\*

Inside every vial lies a quad-stack of metabolic firepower forged for total recomposition and clean power from within.\*

## **What's Inside per 5ml Vial:\***

**AOD-9604 10mg** – The targeted fat-burning fragment of HGH that melts adipose tissue without affecting growth hormone or blood sugar

**CJC-1295 6mg** – Triggers powerful GH pulses for lean muscle, recovery, and cellular renewal

**Ipamorelin 10mg** – The clean, cortisol-neutral secretagogue that supports body composition and natural hormonal rhythm

**MOTS-C 10mg** – A mitochondrial catalyst that lights up metabolic drive and insulin sensitivity for sustained energy

## **What It Does:\***

**Melts fat from the inside out** — no crash, no compromise

**Cranks metabolic output** while keeping adrenals calm

**Preserves lean muscle** through every cut or fast

**Enhances recovery, cellular performance, and hormonal balance**

**Leaves you feeling sharp, strong, and fully in command**

A monk in a dark robe is shown in profile, meditating in a mountainous landscape. The sky is filled with dark, swirling clouds, suggesting a storm or intense weather. The overall mood is one of calm amidst chaos.

# KÄLM<sup>©</sup>

Clear Mind. Steady Nerves. Deep Focus.

**Kälm is a neural reset — engineered for those who appear unshakable, yet carry chaos beneath the calm.\***

**Formulated to quiet internal noise, reduce cortisol, and restore equilibrium — enhancing focus and mental clarity without sedation or fog.\***

**What's Inside per 5ml Vial:\***

**Semax 5mg - boosts BDNF to sharpen cognition, strengthen memory, and build mental resilience.**

**Selank 5mg - lowers cortisol and anxiety while stabilizing mood, attention, and stress response.**

**Who It's For:\***

**Overthinkers and under-sleepers.**

**Professionals, leaders, and creatives chasing clarity under pressure.**

**Anyone ready to feel calm, collected, and in control again.**

**Kälm helps you shift out of survival mode — so you can think deeper, move clearer, and lead from center.**

# Love & Happiness<sup>©</sup>

Feel good. Get close. Light the fire.

This blend was crafted for connection, confidence, and chemistry.

Whether it's intimacy, attraction, or simply feeling really damn good, Love & Happiness sets the stage for deeper connection and magnetic energy.\*

Whats inside per 5ml Vial:\*

**Oxytocin 50mg** - is the “bonding hormone”—the molecule behind trust, empathy, and emotional closeness. It's released naturally during hugs, kisses, and moments of passion—building comfort, affection, and connection at a biochemical level.\*

**PT-141 10mg** - heightens desire and arousal in both men and women—not by increasing blood flow, but by activating the brain's pleasure and reward centers where attraction truly begins.\*

**Benefits May Include\***

- Elevated mood and emotional well-being
- Heightened desire and sensitivity
- Deeper emotional and physical connection
- Reduced social anxiety
- Increased confidence and presence

Whether you're sparking something new or reigniting an old flame, this blend is your shortcut to an authentic connection with yourself, or with someone else.



# LUCID<sup>©</sup>

**Mental Clarity. Clean Energy. Total Output.**

**This is next-generation brain fuel for builders, thinkers, and high-performers who demand clean energy, deep focus, and sustainable drive.**

**No stimulants. No crash. No chaos.**

**Just precision thought, calm intensity, and internal fire that actually lasts.\***

## **What's Inside per 5ml Vial:\***

**Semax 5mg - Boosts BDNF for focus, learning, and long-term memory**

**Selank 5mg - Reduces stress-fog and anxiety without dulling your edge**

**MOTS-C 50mg - Powers mitochondrial energy for mental endurance**

**Tesamorelin 6mg - Enhances cognitive sharpness and metabolic support**

## **What It Does\***

- **Elevates focus, clarity, and motivation without stimulants**
- **Enhances neuroplasticity and long-term brain optimization**
- **Increases cellular energy for sustained mental performance**
  - **Reduces stress, fatigue, and distraction**
  - **Supports memory, creativity, and flow state**
- **Balances dopamine and mood for smooth, steady output**

**LUCID isn't a hype blend — it's your mental edge in a bottle.**

**Think faster. Move cleaner. Execute harder.\***

# SAMSON & DELILAH<sup>©</sup>

Engineered for the Comeback

Born of myth. Fueled by resilience. Perfected by science.

Samson & Delilah isn't a vanity blend, it's a cellular revival system designed to restore what time and stress take away. This stack repairs at the root, reigniting dormant follicles, rebuilding tissue integrity, and revitalizing scalp health from the inside out.\*

Whether your goal is thicker hair, faster recovery, or renewed confidence. This is restoration redefined.

## What's Inside per 5ml vial:\*

**GHK-Cu 50mg** Copper peptide that activates follicles, boosts collagen, and repairs scalp tissue

**CJC-1295 6mg** Growth hormone stimulator for regeneration and cellular repair

**Ipamorelin 12mg** GH secretagogue that enhances recovery and nutrient delivery

**TB-500 10mg** Healing peptide that improves blood flow and tissue renewal

## What It Does\*

- Awakens dormant follicles and restarts natural growth cycles
- Extends the anagen (growth) phase for fuller, stronger hair
- Improves circulation and nutrient flow to the scalp and skin
- Repairs tissue, collagen, and cellular structure at the follicular level
- Supports long-term strength, thickness, and vitality for men and women alike

This isn't cosmetic. It's renewal at the cellular level. Because strength and beauty both start from within

# HYPNØS<sup>©</sup>

Sleep like a God. Rise like a Warrior

Inspired by the Greek god of sleep himself.  
This isn't melatonin and a prayer.

Hypnøs is a precision-engineered, 4-peptide protocol built for those who need real recovery — deeper sleep, faster healing, and zero noise in the brain at night. It restores balance to the body's stress axis, resets your circadian rhythm, and primes your nervous system to recharge the way it was designed to.\*

## What's Inside per 5ml vial:\*

**DSIP 2mg** — The delta wave activator. Triggers your brain's natural deep-sleep pathways and restores circadian rhythm.

**CJC-1295 + Ipamorelin 5mg/10mg** — Stimulates a nighttime growth hormone pulse for tissue repair, fat metabolism, and neurological reset.

**Selank 5mg** — Neuro-calming peptide that quiets anxiety, reduces cortisol, and promotes peaceful, restorative sleep.

## What Hypnøs Delivers\*

- Sleep that's deep, not just long
- Faster recovery from physical or mental burnout
- Reduced inflammation and improved healing overnight
- Sharper mornings with less fog and balanced mood
- A calm, centered nervous system ready for the next day

Hypnøs is for those who battle hard and recover harder.  
Because tomorrow's fight is won in tonight's rest.

# SENTINEL<sup>©</sup>

Your Body's Last Line and First Response

Sentinel stands ready at a molecular level: protecting from within, restoring what's damaged, and striking fast when threats arise.

The Minutemen weren't soldiers by trade — they were farmers, smiths, and builders who stood watch with courage, instinct, and resolve.

Sentinel channels that same spirit — a precision four-peptide defense system trained to detect, repair, and fortify the body's internal battlefield.

This isn't immune support.  
It's biological readiness.

## What's Inside per 5ml Vial:\*

**Thymosin Alpha-1 (TA1) 5mg** - Recruits and regulates T-cells for a faster, smarter immune response.

**BPC-157 5mg** - Repairs gut lining and vascular tissue, reinforcing the body's first defensive barrier.

**KPV 2mg** - Reduces inflammation without suppressing immune power.

**LL-37 1mg** - Broad-spectrum antimicrobial peptide that neutralizes invaders on contact.

## What It Does\*

Fortifies immune intelligence and coordination

Restores gut and vascular integrity your internal front lines

Calms runaway inflammation while preserving immune strength

Accelerates recovery from illness, injury, or infection

Enhances resilience against biological stressors

Sentinel isn't a supplement it's a call to arms.

Fast. Precise. Unwavering.

Just like those who stood their ground when it mattered most.

# ATLAS<sup>©</sup>

Built for Titans. Engineered for Growth.

ATLAS is a clinical-grade mass accelerator designed for serious lifters, athletes, and physique rebuilders who demand maximum size, strength, and power. Formulated with four of the most anabolic agents available, ATLAS drives muscle growth through multiple synergistic pathways, boosting GH and IGF-1, accelerating recovery, and optimizing nutrient partitioning for dense, quality gains.

## *What's Inside per 5ml vial:*

- CJC-1295 (DAC) – 6mg

Long-acting GH secretagogue that primes the pituitary and fuels sustained anabolic signaling.

- Ipamorelin – 12mg

Fast-acting GH pulse amplifier — zero spike in cortisol or prolactin.

- Tesamorelin – 10mg

Visceral fat slayer with potent GH and metabolic effects — keeps mass clean.

- IGF-1 LR3 – 1mg

Extends the anabolic window and drives direct muscle fiber growth via satellite cell activation.

## *What It Does:*

- Triggers powerful, multi-pathway muscle hypertrophy
  - Drives up natural GH and IGF-1 for sustained anabolic effects
- Enhances protein synthesis, nutrient absorption, and tissue repair
  - Accelerates post-training recovery and reduces inflammation
- Keeps fat low while building mass — clean bulking made easy



# BODHI<sup>©</sup>

The Enlightened Mind

In the shade of the Bodhi tree, Siddhartha attained awakening, an end to suffering through clarity, balance, and stillness of mind.

Bodhi draws from that same principle: not stimulation or sedation, but equilibrium, a calm and focused state where thought, emotion, and energy align.

This blend is your neural sanctuary, a shield against chaos, guiding the mind toward resilience, harmony, and centered cognition.

## What's in Each 5ml Vial:

Semax – 5mg

Elevates BDNF, sharpens focus, and enhances cognitive flexibility

Selank – 5mg

Regulates GABA, calms anxiety, and improves emotional balance

BPC-157 – 10mg

Repairs neural pathways, strengthens the gut-brain axis, and restores vascular integrity

KPV – 10mg

Suppresses neuroinflammation and balances cytokine signaling

## May be Ideal For:\*

- Autism spectrum support
- ADHD and sensory overwhelm
- Social anxiety and mood dysregulation
- Gut-brain axis dysfunction
- Post-inflammatory cognitive recovery

## Clinical Highlights:\*

- Promotes emotional stability and behavioral flexibility
- Targets neuroinflammation at its source
- Enhances clarity, connection, and executive function
- Healing without overstimulation — clean cognition, calm brain

# HYPERION<sup>©</sup>

*Awaken the Inner Flame.*

Hyperion is a high-performance metabolic and vitality blend designed to amplify natural growth-hormone output, enhance recovery, and accelerate body recomposition. Powered by Tesamorelin and Ipamorelin, Hyperion restores youthful balance, energy, and definition—igniting the body's innate renewal pathways from within.

What's in it (per 5 mL vial):\*

- Tesamorelin – 10 mg

Stimulates deep, sustained GH → IGF-1 release for fat metabolism, muscle preservation, and cellular repair.

- Ipamorelin – 10 mg

Triggers clean GH pulses that promote recovery, energy, and lean muscle tone without cortisol elevation.

What it may do:\*

- Accelerate fat metabolism and lean recomposition
- Support muscle repair, recovery, and strength
  - Improve sleep quality and overall vitality
- Enhance cognitive clarity and daytime energy
- Promote youthful skin tone and hormonal balance

May be ideal for:\*

- Men and women seeking balanced maintenance or physique refinement
  - Individuals focused on reducing abdominal fat
  - Athletes pursuing optimized recovery and energy
- Those transitioning off higher-dose GH or peptide regimens

For those who carry the light of strength, balance, and renewal.

# Selene<sup>©</sup>

Eternal Glow | Effortless Grace

*Born of moonlight and molecular mastery, Selene is the silent force behind effortless elegance. Designed for women who aren't chasing youth — they're rewriting it — this blend tightens, tones, and transforms from the inside out.*

## What's in it per 5ml vial:\*

### **GHK-Cu (50mg)**

A naturally occurring copper-binding peptide studied for its regenerative and anti-inflammatory properties. It plays a role in skin remodeling, tissue repair, and may help stimulate collagen and elastin production for healthier, firmer skin.

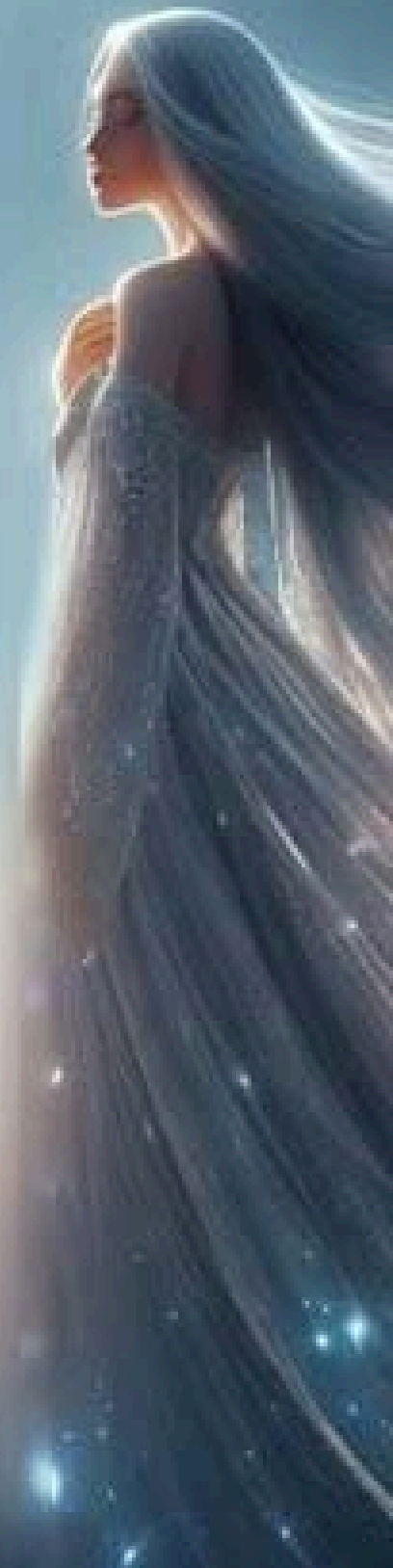
### **Tesamorelin (10mg)**

A potent growth hormone-releasing analog that may improve body composition, support fat metabolism (especially visceral fat), and promote improved insulin sensitivity and cognitive clarity.

## What it may do:

- Improve skin tone, elasticity, and radiance through collagen support and cellular regeneration
- Promote fat metabolism, especially in the abdominal and visceral regions, without adding muscle bulk
- Support mental clarity, mood, and focus, particularly during hormonal transitions
- Enhance overall aging gracefully — from skin to metabolism to cognitive performance
- Ideal for women in perimenopause and post menopause seeking subtle, elegant transformation

**Not for the timid. Selene is elegance with an edge.**



# HELIOS<sup>©</sup>

*Ignite from Within.*

A refined men's rejuvenation and maintenance blend crafted to sustain lean definition, skin tone, and youthful vitality. Powered by GHK-Cu and Tesamorelin, Helios helps tighten, sculpt, and restore balance long after transformation—keeping the fire burning from within.

What's in it (per 5 mL vial):\*

- GHK-Cu – 50 mg

Stimulates collagen and elastin for firmer, more youthful skin.

- Tesamorelin – 10 mg

Enhances natural GH → IGF-1 activity to reduce visceral fat and support cellular renewal.

What it may do:\*

- Tighten and firm skin through increased collagen and elastin
- Support natural fat metabolism and lean muscle tone
- Improve recovery, energy, and sleep quality
- Enhance overall vitality and longevity
- Maintain results from prior optimization or recomposition programs





# **Crave**®

*The Desire & Connection Formula*

**CRAVE is the evolution of modern intimacy peptides — a three-pathway formula engineered to amplify desire, deepen emotional connection, and reignite the chemistry between partners. Built on the warm, open bonding effects of oxytocin, CRAVE adds targeted neuropeptides that activate both mental arousal and the internal hormonal drive that makes desire feel real, natural, and spontaneous again.**

## **WHATS INSIDE PER 5ml VIAL:\***

**Oxytocin (50mg) enhances emotional closeness, trust, warmth, and bonding, the foundation of meaningful intimacy. PT-141 (10mg) ignites central arousal pathways, heightening libido, responsiveness, and physical readiness.**

**Kisspeptin-10 (2mg) triggers the brain's reproductive signaling system, boosting natural desire, motivation, and hormone-driven sexual energy.**

**CRAVE is designed for individuals and couples who want more than just arousal — they want connection, presence, chemistry, and spontaneity that feels effortless.**

## **Ideal For:\***

- **Boosting libido and responsiveness**
- **Enhancing emotional and physical intimacy**
- **Supporting natural sexual signaling**
- **Reigniting passion for couples**
- **Improving desire without harsh stimulants**

**Where Love & Happiness creates warmth...  
CRAVE creates fire**

## **CYCLING + DOSING GUIDE\***

### **FOUNTAIN OF YOUTH**

Cycle: 8-12weeks on,4 weeks off

Dosing: Start at 10 units for 1-3 days to assess tolerance. Increase up to 25 units. Use 5x per week.

Notes: Supports collagen production, cellular repair, and full-body rejuvenation. Ideal for anti-aging, post-surgical recovery, and vitality.

### **ADONIX**

Cycle: 12weeks on, 4 weeks off

Dosing: Start at 10 units for 1-3 days to assess tolerance. Increase up to 25 units. Use 5x per week.

Notes: Formulated for fat loss, lean muscle, and metabolic acceleration. Combines mitochondrial optimization with advanced lipolytic support.

### **APEX**

Cycle: 10-12 weeks on, 6 weeks off

Dosing: Start at 10 units for 1-3 days to assess tolerance. Increase up to 25 units. Use 5x per week.

Notes: Enhances strength, endurance, muscle density, and recovery. Ideal for high performers and muscle preservation.

### **EMPRESS**

Cycle: 10weeks on, 4-6 weeks off

Dosing: Start at 10 units for 1-3 days to assess tolerance. Increase up to 25 units. Use 5x per week.

Notes: Targets fatigue, hormonal shifts, libido, and skin tone. Optimized for women's vitality and menopause support.

### **VALKYR**

Cycle: 8-10weeks on, 4 weeks off

Dosing: Start at 10 units for 1-3 days to assess tolerance. Increase up to 25 units. Use 5x per week.

Notes: Recovery and healing for post-op and soft tissue repair. Accelerates healing of joints, tendons, and gut lining.

### **PROMETHEUS**

Cycle: 12weeks on, 4-6 weeks off

Dosing: Start at 10 units for 1-3 days to assess tolerance. Increase up to 25 units. Use 5x per week.

Notes: Male-focused vitality and recovery. Supports testosterone, libido, and resilience.

## **INFERNO**

Cycle: 10-12 weeks on, 6 weeks off

Dosing: Start at 10 units for 1-3 days to assess tolerance. Increase up to 25 units. Use 5x per week.

Notes: Advanced fat-burning with mitochondrial activation. Boosts energy and reduces stubborn fat.

## **KALM**

Cycle: 8 weeks on, 2-4 weeks off

Dosing: Start at 10 units for 1-3 days to assess tolerance. Increase up to 25 units. Use 5x per week.

Notes: Neuro-regenerative and anti-anxiety blend. Promotes emotional balance and focus.

## **LOVE & HAPPINESS**

Cycle: As needed, 1-5x weekly Dosing: Start at 10 units for 1-3 days to assess tolerance. Increase up to 25 units. Use 5x per week. Notes: Boosts oxytocin and social connection. Supports bonding, empathy, and mood. For sexual or social use, administer 25-30 units 30–60 minutes prior to activity.

## **LUCID**

Cycle: 8-10 weeks on, 4 weeks off

Dosing: Start at 10 units for 1-3 days to assess tolerance. Increase up to 25 units. Use 5x per week.

Notes: Cognitive enhancement and focus support. Helps mental clarity and memory.

## **SAMSON & DELILAH**

Cycle: 12-16 weeks on, 4-6 weeks off

Dosing: Start at 10 units for 1-3 days to assess tolerance. Increase up to 25 units. Use 5x per week.

Notes: Hair-focused regenerative blend for growth, follicle repair, and reduced shedding.

## **HYPNOS**

Cycle: 8-12 weeks on, as needed

Dosing: Start at 10 units for 1-3 days to assess tolerance. Increase up to 25 units. Use 5x per week.

Notes: Deep sleep, GH release, and circadian rhythm optimization.

## **SENTINEL**

Cycle: 8-12 weeks on, 4 weeks off

Dosing: Start at 10 units for 1-3 days to assess tolerance. Increase up to 25 units. Use 5x per week.

Notes: Immune modulation and inflammation control. Ideal for gut-immune repair and pathogen response.

## **ATLAS**

Cycle 12 weeks on, 4 weeks off

Dosing start at 10 units for 1-3 days to assess tolerance. Increase to 25 units 5x per week

Notes: Advanced Muscle Recomposition

## **BODHI**

Cycle 8-12 weeks on, 2-4 weeks off

Dosing start at 10 units for 1-3 days to assess tolerance. Increase to 25 units 5x per week

Notes: Calm, Neural Balance and Focus Support

## **HYPERION**

Cycle 8-12 weeks, 4 weeks off

Dosing start at 10 units for 1-3 days to assess tolerance. Increase to 25 units 5x per week

Notes: Abdominal Fat loss, Energy & Recovery

## **SELENE**

Cycle 12 weeks on, 4 weeks off

Dosing start at 10 units for 1-3 days to assess tolerance. Increase to 25 units 5x per week

Notes: Sculpting and Rejuvenation

## **HELIOS**

Cycle 12 weeks on, 4 weeks off

Dosing start at 10 units for 1-3 days to assess tolerance. Increase to 25 units 5x per week

Notes: Sculpting and Rejuvenation

## **CRAVE**

Cycle: As needed, 1-5x weekly Dosing: Start at 10 units for 1-3 days to assess tolerance. Increase up to 25 units. Use 5x per week. Notes: Boosts oxytocin and social connection. Supports bonding, empathy, and mood. For sexual or social use, administer 25-30 units 30–60 minutes prior to activity.

## **KALI**

Cycle 12 weeks on, 4 weeks off

Dosing start at 10 units for 1-3 days to assess tolerance. Increase to 25 units 5x per week

Notes: GLP-1 side effect therapy

**Disclaimer:**

**These statements have not been evaluated by the Food and Drug Administration. This product is not intended to diagnose, treat, cure, or prevent any disease. Results may vary.**

**All peptides and formulations offered by Active Pharm are sourced exclusively through FDA-registered 503A and 503B compounding pharmacies, licensed compounding laboratories, or pharmacy-authorized fulfillment facilities. All raw materials used in our formulations meet or exceed 97% purity and are obtained through partners operating under strict regulatory and quality standards.**

**\*DOSING IS BASED ON DATA COLLECTED FROM MEDICAL PROFESSIONALS CURRENTLY USING PEPTIDES IN THEIR CLINICAL SETTINGS**

**Professional Use Notice**

**By placing an order, the purchaser affirms the following:**

**Licensure & Eligibility**

**They are a licensed medical provider, an authorized medical facility, or an entity operating under a provider's medical license.**

**Professional Use Only**

**All products are strictly intended for professional, clinical, or research use. They are made available only to licensed healthcare providers or trained clinical staff under direct medical oversight.**

**Responsibility & Oversight**

**The purchaser accepts full responsibility for the appropriate handling, storage, administration, and use of all products in accordance with their medical licensure, local regulations, and internal protocols.**

**Active Pharm does not provide diagnosis, treatment recommendations, or clinical guidance. All usage decisions remain solely at the discretion of the treating provider.**