

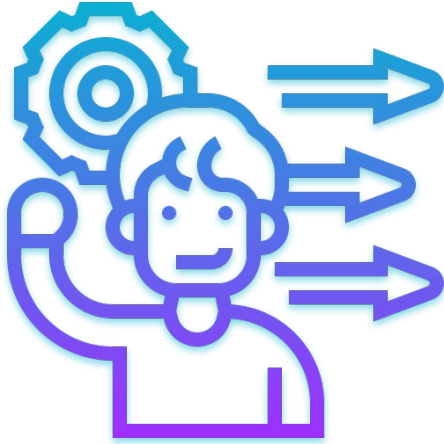
# Techsharingb

## Technical Services Summary - [2024-25]



# Innovate Everyday

*"Most innovation involves doing the things we do every day a little bit better rather than creating something completely new and different."*

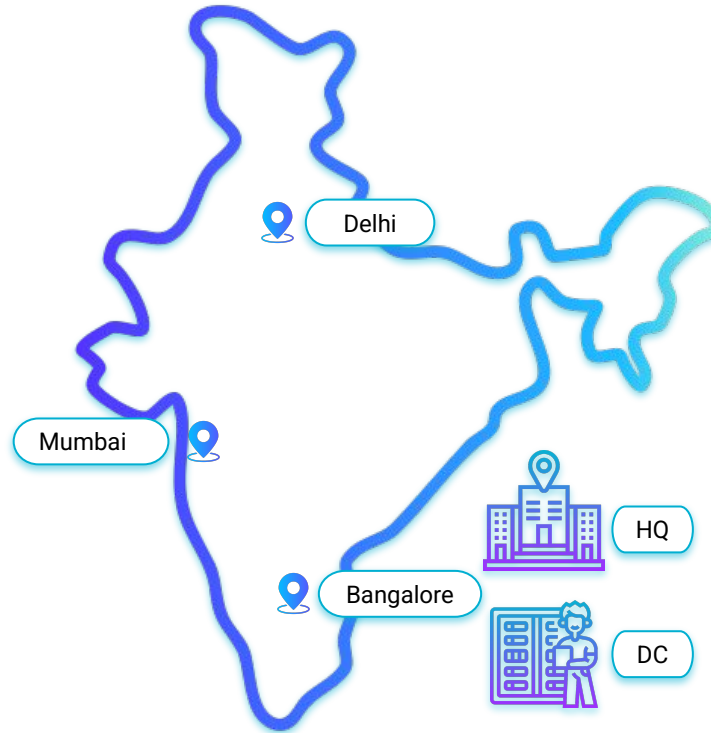


Young | Dynamic | Problem Solvers

# We Are

*"Making Technology Accessible"*

# Our Presence



# Our Team - Highlights



- Patient Listeners and Problem Solvers
- Entry to Expert Level Certified Professional for respective OEMs
- Team with 15+ Years of Industry Experience
- Detailed understanding of different OEM Products/ Solutions
- Certified Professional for IT Processes and Project Management

# What We Do?



Technical Services



Learning Services

# Technical Services



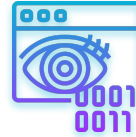
## Technical Services

- Wireless Site Surveys
- Product/ Solution Workshop
- Proof of Value/ Concept
- Solutions Design
- System Integration
- Infrastructure Passive Work
- Implementation
- Project Management
- Managed Services
- Vulnerability Assessment
- Penetration Testing
- Threat Hunting
- Configuration Audit
- Facility Management Services

# Technology Service Domains



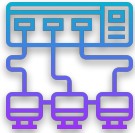
Enterprise - Wireless



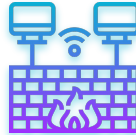
Cyber Security



Cloud



Enterprise - Wired



Network Security



Software Defined Networking



# Capability - Cisco

S.No.	Products/ Softwares/ Solutions	Level
1	Secure Firewall - NGFW, NGIPS (Network security)	Expert
2	Identity Services Engine - ISE (Network segmentation)	Expert
3	Secure Web - (Web proxy/ filtering)	Expert
4	Secure Email - (Email proxy/ filtering)	Expert
5	Secure Endpoint - (Endpoint protection)	Expert
6	Umbrella (Secure web gateway and more)	Expert
7	Duo (Multi-factor authentication)	Expert
8	Anyconnect (VPN and remote access)	Expert

# Capability - Cisco (cont.)

S.No.	Products/ Softwares/ Solutions	Level
9	Stealthwatch (Secure analytics)	Expert
10	Kenna Security (Vulnerability management)	Expert
11	Cyber vision (OT security posture)	Expert
12	Extended detection and response (XDR)	Expert
13	Secure access service edge (SASE)	Expert
14	Security Service Edge (SSE)	Expert
15	SD-WAN	Expert
16	SD-Access (DNA Center)	Expert

# Capability - Cisco (cont.)

S.No.	Products/ Softwares/ Solutions	Level
17	Cisco ACI	Expert
18	Cisco Spaces	Expert
19	Routers, Switches	Expert
20	Access points	Expert
21	Wireless LAN controllers	Expert
22	Wireless - Catalyst 9k (Wi-Fi 6/ 6E)	Expert
23	Secure access service edge (SASE)	Expert
24	Thousandeyes (Internet and cloud intelligence)	Expert

# Capability - Cisco (cont.)

S.No.	Products/ Softwares/ Solutions	Level
25	Meraki Secure - Security and SD-WAN	Expert
26	Meraki Access - Wireless, Switching and Mobile Device Management	Expert
27	SASE with Meraki	Expert

# Capability - Aruba

S.No.	Products/ Softwares/ Solutions	Level
1	Access Switches - 2k, 3k, 4k, 5k and 6k series	Expert
2	Campus Core & Data Center Switches - 8k, 9k and 10k series	Expert
3	Access Points - Indoor, Outdoor and Remote complete series	Expert
4	Gateways and Controllers - 7k, 9k, Mobility Controller VA, Mobility Conductor VA and Hardware	Expert
5	Security - Network Access Control - ClearPass	Expert
6	Management & Operations - Aruba Central	Expert
7	Visibility & Profiling - Aruba Central	Expert

# Capability - Juniper

S.No.	Products/ Softwares/ Solutions	Level
1	Routers - MX complete series	Expert
2	Switches - EX complete series, QFX complete series	Expert
3	Security - Next-Generation Firewall - SRX 3k and 5k series	Expert

# Capability - Fortinet

S.No.	Products/ Softwares/ Solutions	Level
1	Next-Generation Firewall - complete series	Expert
2	Secure SD-WAN	Expert
3	Secure Access Service Edge (SASE)	Expert

# Capability - Data Resolve

S.No.	Products/ Softwares/ Solutions	Level
1	Data Leak Prevention	Expert
2	Employee Monitoring	Expert
3	Workplace Productivity	Expert
4	Corporate Cyber Intelligence	Expert



# Capability - Public Cloud

S.No.	Cloud Provider and Solutions	Level
1	<b>Google</b> - Google Workspace, On-site integrations and other Public Cloud connectivity	Expert
2	<b>Azure</b> - Cloud network setup, Virtual Appliance configuration, On-site integrations and other Public Cloud connectivity	Expert
3	<b>AWS</b> - Cloud network setup, Virtual Appliance configuration, On-site integrations and other Public Cloud connectivity	Expert

# Capability - Infrastructure Passive Work

S.No.	Infrastructure Passive Work	Level
1	<b>Data Center</b>	Expert
2	<b>Enterprise</b>	Expert
3	<b>Telecommunication</b>	Expert

# Capability - Passive IT Networking Services

S.No.	Data Center Environment	Enterprise Environment
1	Main Distribution Frame (MDF) Room Setup	MDF & IDF Room Planning and Installation
2	Rack & Stack Implementation	LAN Cabling & Network Point Installation
3	Structured Cabling (Copper & Fiber)	Wireless Access Point Cabling & Mounting
4	Cable Management & Labeling	Server Room/IDF Room Setup
5	Patch Panel Installation & Termination	Cable Dressing, Tagging & Documentation
6	Grounding & Bonding Systems	Power & Electrical Layout Support
7	Cold/Hot Aisle Containment Support	Inter-Floor/Building Backbone Cabling
8	Raised Floor Setup & Cable Trays	Network Rack Installation & Dressing
9	Network Room Build-outs	Surveillance & Access Control Cabling

# Capability - Passive Telecom Networking Services

S.No.	Field-Level (Outdoor/ Tower Infrastructure)	Central/ Exchange-Level (Indoor Infrastructure)
1	Survey & Site Feasibility Analysis	Survey & Site Feasibility Analysis
2	I&C – Installation & Network Integration	I&C – Installation & Network Integration
3	Configuration, Migration & Testing	Configuration, Migration & Testing
4	Telecom Tower Grounding & Earthing System	Telecom Rack Installation & Labelling
5	RF Cable & Feeder Line Installation	DDF (Digital Distribution Frame) Termination
6	Antenna Mounting & Support Structures	Structured Cabling (Copper & Fiber)
7	ODF (Optical Distribution Frame) Setup	Power Cabling & Rectifier Room Support
8	Outdoor Cabinet Installation & Dressing	Patch Panel & Cross-Connect System Setup
9	DC Power Cabling & Battery Bank Wiring	Environmental Monitoring Sensor Cabling
10	Cable Tray & Conduit Laying (Outdoor)	Trunk/Backbone Fiber Cabling Between POPs

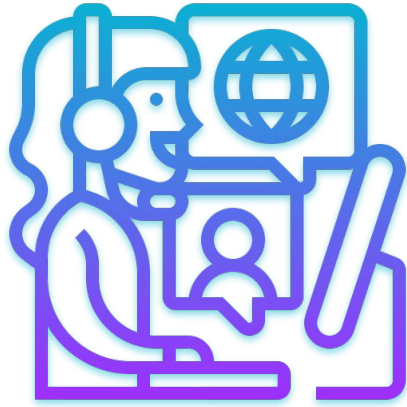
# Technology Partners



Premier Integrator  
Advanced Security Architecture  
Specialized



# Learning Services



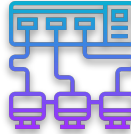
## Learning Services

- Instructional Design
- Curriculum Design
- Content Development
- Technical Demo Videos
- Lab Setup and Testing
- Copy Editing
- Video Voice Over
- Technical Workshops
- Technical Training
- Technical Assessment

# Learning Service Domains



Enterprise - Wireless



Enterprise - Wired



Network Security



Data Center



Cloud



Software Defined Networking/  
Automation



Cyber Security



Service Provider

# Capability - Learning Services

S.No.	Learning Services	Level
1	Instructional Design	Expert
2	Curriculum Design	Expert
3	Content Development	Expert
4	Technical Demo Videos	Expert
5	Lab Setup and Testing	Expert
6	Copy Editing	Expert
7	Video Voice Over	Expert
8	Technical Workshops	Expert
9	Technical Training	Expert
10	Technical Assessment	Expert



# Capability - Cisco (Content Development)

S.No.	Content Development Domains	Level
1	Enterprise Wired Infrastructure	Expert
2	Enterprise Wireless Infrastructure	Expert
3	Enterprise Network Security	Expert
4	Data Center	Expert
5	Cloud	Expert
6	Software Defined Networking/ Automation	Expert
7	Cybersecurity	Expert
8	Service Provider	Expert
9	Artificial Intelligence	Expert

# Capability - Cisco (Technical Training)

S.No.	Technical Training Domains	Level
1	Enterprise Wired Infrastructure	Expert
2	Enterprise Wireless Infrastructure	Expert
3	Enterprise Network Security	Expert
4	Data Center	Expert
5	Cloud	Expert
6	Software Defined Networking/ Automation	Expert
7	Cybersecurity	Expert
8	Service Provider	Expert
9	Artificial Intelligence	Expert

# Learning Partners



# Project Engagements - Cisco

[Click to view the details](#)

# PoC Engagements - Highlights [2024-25]

OEM	Products/ Software/ Solutions	Customer (s)
<b>Cisco</b>	Cisco Secure Firewall, Cisco Secure Firewall - NGIPS, Identity Services Engine - NAC, Umbrella - SASE, Duo - SASE, Duo - MFA, Cisco Wireless - Catalyst series, Meraki - SD-WAN and Wireless	<b>BFSI</b> - UCO Bank, Bandhan Bank <b>Unicorn</b> - Zomato <b>Government</b> - IOCL <b>Power &amp; Manufacturing</b> - Jindal Steel & Power Ltd., Adani Electricity <b>Hotel</b> - ITC Ltd.
<b>Meraki</b>	Switching and Wireless	<b>Retail</b> - Royal Oak
<b>Aruba</b>	Access Points, Gateways & Controllers, Aruba Central - Management & Operations	<b>IT Consulting</b> - Kellton
<b>Google</b>	SSO - SAML Integration	<b>Unicorn</b> - Zomato
<b>Fortinet</b>	Next-Generation Firewall	<b>Business Services</b> - Ques Corp
<b>Dataresolve</b>	inDefend Advanced - DLP/ Employee Monitoring	<b>All Segments</b> - Calibre, LEAP, India Tech Services, ATMECS, IIFL Samasta

# Project Engagements - Highlights [2024-25]

OEM	Products/ Software/ Solutions	Customer (s)
<b>Cisco</b>	Cisco Secure Firewall, Identity Services Engine - NAC and Profiling, Cisco Secure Web Appliance, Cisco Secure Malware Analytics, Content Security Management Appliance, Duo - MFA, Cisco Wireless - Catalyst series	<b>BFSI</b> - UCO Bank, Bank of Maharashtra <b>Unicorn</b> - Zomato <b>Power &amp; Manufacturing</b> - Jindal Steel & Power Ltd., Adani Electricity <b>Digital Healthcare</b> - Innovaccor
<b>Aruba</b>	Access Points, Gateways & Controllers, Aruba Central - Management & Operations	<b>IT Consulting</b> - Kellton
<b>Google</b>	SSO - SAML Integration	<b>Unicorn</b> - Zomato <b>Power &amp; Manufacturing</b> - Jindal Steel & Power Ltd.
<b>Dataresolve</b>	inDefend Advanced - DLP/ Employee Monitoring	<b>All Segments</b> - Magicmind, GSC Technologies, Tata Steel Limited

# Contact



[+91-776-0740-596](tel:+91-776-0740-596)



[info@techsharingb.com](mailto:info@techsharingb.com)



[www.techsharingb.com](http://www.techsharingb.com)



TechSharingB