

LUMPKIN COUNTY 4H & GMMG 2023 PLANT SALE

February 20-March 31

<https://gammg.org/shop>

FRUITS

Apple tree- Honey Crisp



5-gallon pot, \$29.00

Height and Width: 8-10 feet

Grows in zone 4- 7, full sun

Apples are juicy, sweet and crisp. Prefers slightly acidic, moderately fertile soil with average moisture, Avoid heavy clay soil. Requires pollination by other trees with same bloom period (Gala, Red Delicious, Braeburn).

Apple tree-Callaway Crabapple



5-gallon pot, \$29.00

Height and Width: Grows 4-5 feet wide and 15-20 feet tall

Plant: Full sun, Needs full sun and well-drained soil.

Blooms in: Spring, self-pollinating, profusion of lovely white flowers followed by cherry like fruit

Widely grown as an ornamental tree, has made its way into wildlife plantings for a good reason. This tree produces a 1"- 1 1/2" sweet edible crabapple that holds tight to the tree that drops free as colder weather sets in, typically in October & November for me in the North East. Attractive to deer? Yes! This tree produces consistent annual crops of crabapples. Disease resistant

Thornless Blackberry “Arapaho” Deciduous Fruit Bush



1-gallon pot, \$9.00

Height: 4 to 5 feet tall and 6 to 8 feet wide

Plant: Full sun to Mostly Sun

Blooms in: Summer thru Fall, self-pollinating

Color: Black, Red floricane

An excellent variety for the South, Arapaho is a superb, thornless blackberry that was released in 1993 from the University of Arkansas (U.S. Plant Patent 8510). It is a hardy, disease resistant variety that produces very nice, sweet berries with small seeds, on erect, thornless canes. It is one of the earliest to ripen of the Arkansas thornless varieties, and has very good post-harvest potential. Arapaho blackberry is a sun-loving, self-pollinating floricane, and has demonstrated good resistance to both Double Bloom-Rosette (DB-R) and Orange Rust diseases.

Thornless Blackberry “Navaho” Deciduous Fruit Bush



1-gallon pot, \$9.00

Height: 4 - 6 feet tall and 3 to 4 feet wide Plant: Full Sun or Mostly Sun

Blooms in: June- July, self-pollinating floricane

Color: Black, Blue

Navaho Blackberry will produce the best and most berries when growing in full sun. However, where space is limited, a blackberry plant will produce good crops even when grown in shade, which is something no other common fruit

plants will do. Blackberries will grow reasonably well in most soil types except for very compacted clay or light chalky soil. In these soils it'll be worth your time to mix in lots of organic compost to condition the soil and add beneficial nutrients and bacteria plants need to grow healthy. Beneficial Pollinators and birds are attracted to the berries.

Blueberry “Brightwell” Deciduous Fruit Bush



1-gallon pot, \$9.00

Height: 6-8 feet tall and 6-8 feet wide

Plant Full Sun or Mostly Sun, light shade

Blooms in Early Spring, berries are light blue

A 1983, University of Georgia release, Brightwell Rabbiteye is named after esteemed UGA blueberry developer, Dr. James Brightwell, and is considered by many among the top varieties in the world! Best known for its reliability and its long, sustained harvest period (~ 35 days), Brightwell is ideal for almost any planting application. It has very vigorous, upright growth - and because it flowers late, it is highly resistant to freeze damage. Brightwell is a heavy producer of medium size berries, with excellent flavor, and dry stem scar. It is also known for its very firm, uniformly round berries. Beneficial Pollinators and birds are attracted to the berries.

Blueberry “Tifblue” Deciduous Fruit Bush



1-gallon pot, \$9.00

Height: 6-8 feet tall and 6-8 feet wide

Plant Full Sun or Mostly Sun, light shade

Blooms in Early Spring, berries are light blue

A 1955 University of Georgia release, Tifblue is one of the oldest blueberry cultivars still being planted, and has long been considered one of the best, most widely adapted varieties on the U.S. market. It has a tall, upright growth habit, good freeze resistance, and is one of the most ornamental rabbiteye varieties due to its brilliant orange-red fall leaf color. Tifblue ripens in mid-late season, and produces abundant yields of light blue, medium-large size fruit, with excellent flavor, and a small, dry stem scar. Tifblue berries also store and ship very well - which is yet another reason it has been a top selection for both home and commercial growers. Make sure to plant two different cultivars/varieties for each season. Beneficial Pollinators and birds are attracted to the berries.

Elderberry-Ranch



3-gallon pot, \$21.00

Height:5- 6 feet tall and 5-6 feet wide

Plant Full Sun

Blooms in Early Spring, berries are black

We are excited about this new American Elderberry plant that's ideal for home gardens. 'Ranch' is an excellent elderberry with a short stature and it only grows 5-6' tall so the berries are easily harvested. It's also one of the most forgiving if you have non-fertile soil and it handles a zone 3 winter easily. American Elderberries need to be cross pollinated. That's why we are also offering an American Elderberry 'Wyldeewood' which is well known for its high fruit yields from its immense flower heads that often reach 12" across. Elderberry is well known as an ingredient in wines and jams but it's also used to help mitigate colds and flu because of its antiviral properties. It is a great source of vitamin C and has been used for antibacterial properties as well.

Elderberry-Wyldeewood



3-gallon pot, \$21.00

Height:5- 6 feet tall and 5-6 feet wide

Plant Full Sun

Blooms Small, sweet, dark purple fruit.

'Wyldeewood' is a new American Elderberry plant with high yields and superior fruit production from its immense flower heads that often reach up to 12" across. 'Wyldeewood' needs to be cross-pollinated and we recommend 'Ranch.' That's why we are also offering the American Elderberry 'Ranch,' an excellent elderberry with a short stature and it only grows 5-6' tall so the berries are easily harvested. It's also one of the most forgiving if you have non-fertile soil and it handles a zone 3 winter easily. Elderberry is well known as an ingredient in wines and jams but now the medicinal world has reported the use of elderberry helps mitigate colds and flu virus because of its antiviral properties. It is also a great source of vitamin C and has been used for antibacterial properties as well.

Fig- Chicago Hardy



1-gallon pot, \$9.00

Height: 15 – 30 feet tall and 15-30 feet wide, prune to control size

Plant Full Sun – Partial Sun, Moderate growth rate

Harvest July - October

No matter how cold it gets, the Chicago Hardy Fig Tree will never let you down. Why? For starters, the Chicago Hardy can literally freeze over and still come back strong the following spring, producing bushels of plump, delicious figs. And you get a ton of fresh fruit. Perfect for peeling and eating right off the tree in late summer to early fall, you'll be enjoying these amazing figs in your first season after planting. The numbers may surprise you: Your Chicago Hardy will yield as many as 100 pints of figs each season!

Fig- Italian Honey



1-gallon pot, \$9.00

Height: 8 – 10 feet tall and 6-8 feet wide, prune to control size

Plant Full Sun Prefers moderate and climate with 8 hours of sun

Blooms in Early Spring, Zones 7-10

Sweet fig fruit when ripe. Can plant outdoor or in container. Will take a few years to establish and provide fruit.

August brings a delectable deluge of yellow figs loaded with sweet, succulent amber flesh. Self-pollinating.

Peach Tree, Belle of Georgia



5-gallon pot, \$29.00

Height: 15-25 feet tall and 8-20 feet wide.

Plant: Full Sun

Blooms in Early Spring, Zones 5-8

The trees produce good yields of "Georgia peaches" in northern climates. The rosy-colored, freestone fruits are large and firm with a super-sweet, juicy, white flesh. While they're very good for eating fresh, the fruits are favorites for canning, baking into pies and desserts and making into jams and preserves. Old time favorite with brilliant red flowers in Spring and large fruit in August. Needs loamy/sandy, well-drained soil. Not drought tolerant. Self-pollinating but more than one tree will yield larger crop.

Peachtree, Elberta



5-gallon pot, \$29.00

Height: 15-25 feet tall and 15-20 feet wide

Plant: Full Sun Requires 6-8 hours of direct sun.

Blooms in Early Spring, Zones 5-9

Elberta Peach Tree produces high yields of firm, yellow-fleshed fruits with a wonderful aroma and a honey-sweet taste. The large, attractive, rose-blushed fruits are bursting with flavor, making them a good choice for fresh eating. Most popular of all peaches. The freestone fruits are also easy to process ideal for eating, canning or freezing. Needs sandy, well-drained soil, not drought tolerant. Self-pollinating but more than one tree will ensure good crop.

Peach Tree-Red Haven



5-gallon pot, \$29.00

Height: 12-15 feet tall with a spread of 12-15 feet.

Plant: Full Sun.

Blooms in: Late spring, Self-pollinating.

Color: Light pink blossoms

This popular variety is known for being a top producer of large peaches. Fragrant, pink flowers blossom in the spring. When the fruit ripens in July, you'll enjoy bushels of sweet peaches with almost fuzz less skin over firm, creamy-textured yellow flesh. These freestone peaches are great as a fresh snack or for canning and freezing. Red haven is heavy-bearing and easy to grow and maintain. The branches have a spreading nature, and this variety is disease-resistant to leaf spot. It is a self-pollinating fruit tree, making it great for smaller gardens and backyard orchards. Since this tree is so vigorous, we recommend regular pruning and thinning.

Plum Tree-Au Producer



5-gallon pot, \$29.00

Height 12-15 feet tall

Spacing 15-20 feet apart

Early season ripening date of mid-to-late June

The AU Producer plum tree was developed at Auburn University and produces a delicious plum. The fruit is a cling-stone with red/purple skin and red flesh that is sweet and juicy, making it good for fresh eating as well as canning. This is a high yielding tree as its name indicates. USDA hardiness zones 5-8, approximately 650 chill hours.

Thornless Raspberry “Nova” Deciduous Fruit Bush



1-gallon pot, \$9.00

Height: 4 - 6 feet tall and 3 to 4 feet wide Plant: Full Sun or Mostly Sun

Blooms in: June- July, self-pollinating floricanes, berries are red

The Nova Red Raspberry is a consistent producer, known for its large crops of high-quality berries.

Upright growth and small spines make pruning easy. It adapts well to a variety of climates. This red raspberry can tolerate the heat of the Midwest and the harsh winters of Canada. It's a summer bearer in the North and more of a fall bearer in the South. Nova is resistant to most common cane diseases.

Note: Do not plant Red, Gold or Purple raspberries within 75-100 feet of Black raspberries. Black raspberries may be more susceptible to viral diseases carried by aphids to and from nearby raspberry plants. After planting, be sure to prune the bare-root canes back to about 2 inches above the ground. (This does not apply to potted raspberry plants.) Do not skip this step! It is a crucial factor in encouraging the roots to send up new growth during the growing season. It is in the nature of raspberry plants to send up new growth as suckers or basal shoots from below the ground. This means the canes that you plant may not be where you find signs of life or new growth. Beneficial Pollinators.

PERENNIALS

*** *Artemisia schmidtiana* 'Silver Mound' - Satiny Wormwood***



1-gallon pot, \$9.00

Height: 12—24" tall with a spread 12 to 24" wide

Plant: In full sun to partial shade.

Blooms in: Foliage plant all summer

Color: Cushion of silver-grey foliage.

One expert calls *Artemisia* (or *Dusty Miller*) the Gardeners Dream Plant. Its great value is its feathery foliage that adds a lovely gray-green to the garden. Partnered with red-leaved plants or bright blooms, the combinations are spectacular. This is the dwarf form, growing to only about 14 inches. Groundcover, Evergreen, Plants for Small Spaces, Good Rock garden Or Alpine Plant, Deer Resistant, Rabbit Resistant. It needs sharp-draining soil, and is very heat tolerant.

*** *Aruncus* 'Chantily Lace' – Goatsbeard - Deciduous***



1-gallon pot, \$15.00

Height: 24-32" tall, 40-48" wide

Plant: Mostly Sunny to Mostly Shady

Blooms: from spring to early summer, Zones 3-7

Color: Sprays of lacy, cream-colored blooms.

This delicate perennial boasts floriferous sprays of lacy, cream-colored blooms from spring to early summer with accents of deep green foliage. The blossoms are so profuse that they cover the entire plant. Once the flowers start to fade, a billowing mound of fern-like dark green leaves take over. It loves part shade and will be shorter if grown in full sun. The plant is excellent for shady, moist areas, making it ideal for specimen or group plantings along streams or water gardens. Deer Resistant

*** **Aspidistra elatior - Cast Iron Plant*****



1-gallon pot, \$11.00

Height: 12-24 inches

Plant: Full shade

Blooms: Evergreen spring to early summer

Color: coarse dark green lance-like leaves

Cast Iron plant could not be more aptly named. If you are looking for low maintenance greenery that survives in low light and humidity, temperature changes and irregular watering, this plant is for you. It has coarse dark green lance-like leaves and is an appropriate choice for those dark shady locations as a border ground cover or potted plant. Deer resistant, drought tolerant

*** **Coreopsis Li'l Bang Starstruck*****



1-Quart pot, \$7.00

Height: 12-15" tall x 15-18" wide, spacing 12"

Plant: Full Sun

Blooms: spring to early summer

Color: rosy-red-to-pink cheerful blossoms with bright yellow eyes

Li'l Bang™ 'Starstruck' Coreopsis hits a home run for easy-to-grow, colorful, pollinator-friendly flowers. Blooming with rosy-red-to-pink cheerful blossoms with bright yellow eyes, it will keep you in color from mid-summer to mid-fall. Also known as Starstruck Tickseed warms the summer-to-fall garden with a rich spectrum of reds. Radiating out from golden yellow centers the petals emerge as deep burgundy shifting to cherry, pink, and even white tips at the edges. Bees and butterflies love tickseed and with well over 4 weeks of bloom-time, 'Starstruck' is a hardy, easy-care perennial for containers and gardens. It's a great addition to a border, pollinator or bird-friendly garden, or container where it will show off in a hot, sunny spot. Deer resistant, drought tolerant.

*** Delosperma Jewel of Desert 'Sunstone' - Iceplant***



1-gallon pot, \$9.00

Full sun, drought tolerant, deer resistant, butterfly and hummingbird attractant

Mature size: 4-6" tall, 8-10" wide

This perennial has a long lasting, red-orange, daisy-type flowers surrounding a magenta ring and yellow center. It grows in prostrate pattern forming a dense mat. Give it full sun & well drained soil for blooms from spring to frost. The Jewel of Desert 'sunstone' variety tends to bloom longer than typical ice plants. This perennial is the perfect addition to sunny borders and rock gardens.

*** Echinacea 'Cheyenne Spirit' - Coneflower***



1-gallon pot, \$9.00

Full sun, part shade, tolerant to drought, heat and humidity, deer resistant, deciduous, butterfly attractant This flower is a show stopper with narrow petals in vivid shades of orange, red, rosy-red, yellow, purple and cream surrounding a large brown cone center. It blooms on sturdy upright branches from midsummer to early fall. This perennial requires little water, low maintenance and is a perfect plant for perennial borders, pots, and cottage gardens.

*** Gaillardia Spin Top 'Red Starburst'***



1-Quart pot, \$7.00

Full sun, cold hardy, deer resistant, drought tolerant, butterfly lover

Gaillardia 'Spintop Red Starburst', a blanket flower, is a perennial offering late spring through fall interest. Long and heavy blooming, the plant blankets itself non-stop in bold, daisy-esque yellow flowers with a large red eye. Borne in clusters atop hairy stems, the nectar-rich flowers are a pollinator favorite, attracting tons of bees and butterflies. And birds, especially goldfinches, adore the seed heads. The flowers make nice cuts for fresh and dried arrangements.

*** Gaura lindheimeri 'Belleza White' - Wandflower***



1-gallon pot, \$9.00

Full sun, drought tolerant, attracts hummingbirds

Mature size: Height 12-18", Width 16-20", spacing 16"

This herbaceous clump-forming perennial has narrow, green foliage on upright branches with fragrant white star shaped flowers in summer. It needs well drained soil to prevent root rot & benefits from full sun. It tolerates heat, humidity & dry soil. This plant proves a perfect addition to sunny borders, rock gardens, containers or natural meadows.

*** Hemerocallis 'Raspberry Suede' - Daylily***



1-gallon pot, \$13.00

Full sun, part shade,

Mature size: 28" tall, 18-24" wide

Large, velvety, rich, deep red flowers with a crimped edge and a chartreuse throat. This perennial blooms in full sun to partial shade conditions in well-drained soil and is a dramatic accent to any garden. Drought tolerant, deciduous, rabbit resistant, butterfly attractant

*** Heucherella 'Stoplight'***



1-gallon pot, \$9.00

Height: low mound to 7 inches tall and 14 inches wide, with flowers to 16 inches tall. Plant: Full sun to partial shade

Blooms in: Spring First shrub to

bloom Color: Yellow

A plant that will make traffic stop to take a look, the Stoplight Heucherella, commonly called Foamy Bells, lives up to its name with foliage that emerges a brilliant yellow in spring with blood red veins. A cross hybrid of Heuchera (Coral Bells) and Tiarella (Foam Flower), late spring to early summer brings abundant foamy spikes of white flowers that rise 16 inches high on thin stems above the foliage. A plant that prefers life on the shady to partially shaded side, Stoplight Heucherella delivers dazzling steadfast color throughout the season that will not go unnoticed! Deer Resistant, both butterflies and hummingbirds will appreciate you for planting this one.

*** Hosta 'Fire and Ice' - Plantain Lily***



1-gallon pot, \$13.00

Part sun-full shade, deciduous

Mature size: 20-22" tall, 30" wide

This cool green and white Hosta heats up shady spots with its heart shaped leaves that have wide, pure white centers and dark green margins. This easy to grow Hosta bears pastel lavender flowers that bloom early to mid-summer.

*** Hosta 'June'***



1-gallon pot, \$9.00

Partial shade to partial sun

3' wide, 16" tall

Somewhat slug resistant

June Hosta is a medium-sized Hosta variety known for its mound of thick chartreuse gold leaves with variegated blue edges. The leaves last well into autumn. The flowers of June Hosta are bell-shaped and creamy lilac white in color, growing on a 22" tall flower stalk in midsummer. This perennial makes a dramatic addition as an accent plant to a low light garden spot.

***** Hosta 'Minuteman'*****



1-gallon pot, \$9.00

Full to part shade

Height: 18"; spread 30"

This herbaceous perennial has stunning dark green leaves that are surrounded by a pure white margin. Pale lavender striped flowers appear on 24" scapes in early to mid-summer. The foliage provides excellent coverage for dying spring bulb foliage. Hosta's can be used as potted plants, specimen plants or border plants and provide a large presence in shade gardening.

***** Hosta Shadowland Series 'Empress Wu' - Plantain Lily*****



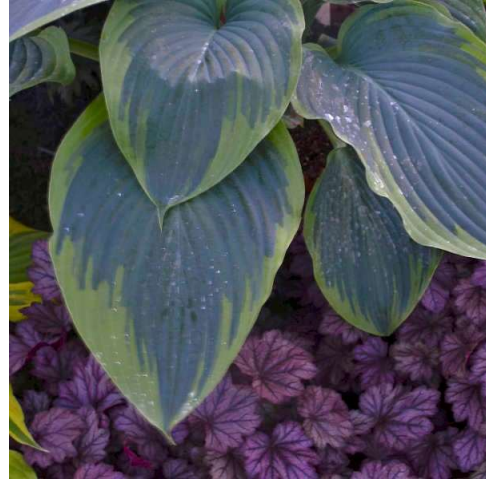
1-gallon pot, \$17.00

Part sun- full shade, rabbit resistant

Mature size: 48" tall, 72" wide

One of the largest Hosta's on the market, with leaves that are 18" wide, grows in an upright mound of huge, thick, dark green leaves topped with pale reddish violet flowers early- to midsummer.

Hosta Shadowland Series 'Wu-La-La' - Plantain Lily



1-gallon pot, \$17.00

Part sun-full shade, deciduous, rabbit resistant

Mature size: 36-48" tall, 60-72" wide

This sport of the huge and hugely popular 'Empress Wu' boasts corrugated, blue-green leaves with bright green margins. Like 'Empress Wu,' it will take about five years for this selection to reach its mature size. Purple flower booms in summer. Prefers soil with high organic matter & moist well drained conditions.

*** Rudbeckia 'Little Goldstar' ***



1-Quart pot, \$11.00

Height 14-16", spread 14-16", spacing 14-16"

Part sun – full sun, long blooming, attracts bees, birds, butterflies, easy maintenance

A knee-high Black-Eyed Susan, with star-shaped golden yellow flowers. Flowers are produced over dark green foliage for a long time.

SHRUBS

Astilbe, “Bridal Veil” (White)



1-gallon pot, \$9.00

Filtered sun – partial shade

Blooms summer to August

Height: 18-20" tall and 24" wide

Color: Lacy white flower panicles on fern like forage

Graceful pure white plumes of Bridal Veil sway above lacy deep green foliage. Young foliage is tinged with bronze. Airy plumes in summer move with the slightest breeze. Excellent specimen for an all-white garden. Astilbe are mainstays of shade and woodland gardens. They combine well with other moisture loving plants like Brunnera, Ligularia, Lobelia and Hosta. Perfect for the shade garden along with Hosta's and Ferns. Lush deeply cut foliage is attractive for the entire sea- son and is colored from green to bronze. It requires an evenly moist well-drained soil for optimal growth. Prefers acid soil, can be grown in a container if kept watered. Rabbit resistant

Astilbe, “Montgomery” (Red)



1-gallon pot, \$9.00

Filtered sun – partial shade

Blooms summer to August

Height: 18-20" tall and 24" wide

Color: Deep Cherry flower panicles on fern like forage

Montgomery' Astilbe produces feathery, magenta-crimson blooms that stand tall over its deep green foliage. A standout addition to the shade garden, delivers loads of color and is a perfect choice for mass plantings. Leaves emerge bronze- red in spring and turn green over the course of the season. It requires an evenly moist well-drained soil for optimal growth. Prefers acid soil, can be grown in a container if kept watered. Rabbit resistant

Aucuba, Picturata Evergreen



1-gallon pot, \$9.00

Height: 6-8 feet tall at maturity, with a spread of 4 feet.

Plant: in part to full shade to partial shade will tolerate morning sun

Color: Dark green toothed leaves speckled with gold, no obvious flowers, but females will set red berries.

Grown for glossy variegated foliage. Wonderful to brighten a dark spot, loves acid soil. Deer Resistant

Azalea, "Coral Bell" (Pink) Evergreen



2-gallon Cost: \$9.00

Height: 3 feet tall at maturity, with a spread of 4 feet. Plant: in full sun to partial shade.

Blooms in: April - May Color: Pink

It requires an evenly moist well-drained soil for optimal growth, but will die in standing water. Coral Bells Azalea is bathed in stunning clusters of lightly-scented coral-pink trumpet-shaped flowers with pink overtones at the ends of the branches in mid spring before the leaves. It has dark green foliage. The glossy oval leaves turn an outstanding burgundy in the fall.

Azalea, Native “Tallulah Sunrise” Deciduous



3-gallon pot, \$25.00

Height: 8—10 feet tall with a spread of 5 to 6 feet. Plant: in partial shade in moist, well-drained soil.

Blooms in: April - May Single, Trumpet-shape fragrant Color: Bright Orange Peach with Golden tones

The Tallulah Sunrise Native Azalea is ideal for use as a specimen or grouping in woodland gardens and borders and shady flowering shrub borders. As she grows taller lower branches can be removed to form an attractive small focal point specimen tree in garden beds or pots, planters and other containers. THIS Azalea is very easy to grow in a moist but well-drained humus rich soil and dappled shade or morning sun with afternoon shade. Native azaleas are very low-maintenance plants that require little if any pruning. When established, plant are quite drought tolerant, requiring supplemental water only during prolonged periods of dry summer weather. Deer Resistant, Attracts Bees and Butterflies, Fragrant and Native

Buddleia “Miss Molly”



3-gallon pot, \$27.00

Height: 4—5 feet tall with a spread of 4 to 5 feet. Plant: in Full Sun, well-drained soil.

Blooms in: All summer long without dread heading Color: Intense Raspberry Fragrant Blooms

These bottlebrush blooms begin in midsummer and continue all the way to frost in the sunny garden, attracting every butterfly, bee, and hummingbird for miles around. Miss Molly is very free-flowering, so cut all the blooms you like for the vase. Miss Molly grows quickly, and needs very little care to continue flowering beautifully year after year. Cut it down to about one-third its original height in late winter or early spring to improve branching and flower production and let it go. There is no easier plant for the sunny garden periods of dry summer weather. Deer Resistant, Attracts Bees and Butterflies, Fragrant

Camellia “Pink Snow” Evergreen



3-gallon pot, \$27.00

Height: 4—6 feet tall with a spread of 4 to 6 feet.

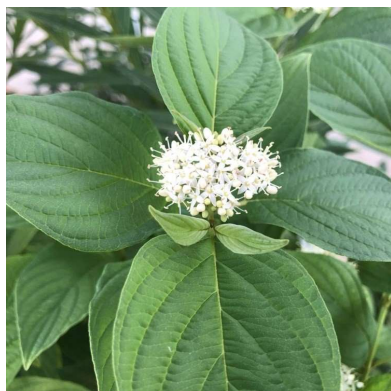
Plant: in partial sun to partial shade in morning sun preferred

Blooms in: Fall to Early Winter

Color: Pink Snow' produces LOADS of shaggy double blooms with carnation-pink color petals

The Pink Snow Camellia can be grown as a large shrub or small tree. As a shrub it is ideal for use as a specimen, in groupings, or as a hedge or background plant in landscape borders and is especially nice as a corner plant or espalier (trained to grow flat against a wall) in home foundation plantings. As this camellia grows taller lower branches can be removed to form a very attractive and colorful focal point specimen tree for use in landscape borders and home foundation plantings. Deer Resistant, Attracts Bees and Butterflies and hummingbirds also, other birds visit the resulting seed-heads

Cornus Farrow, “Arctic Fire”



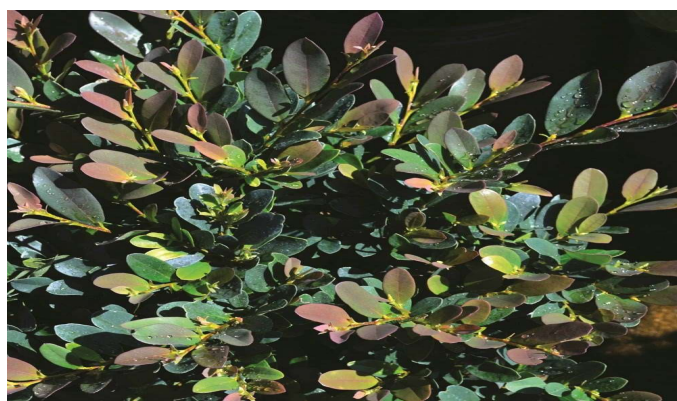
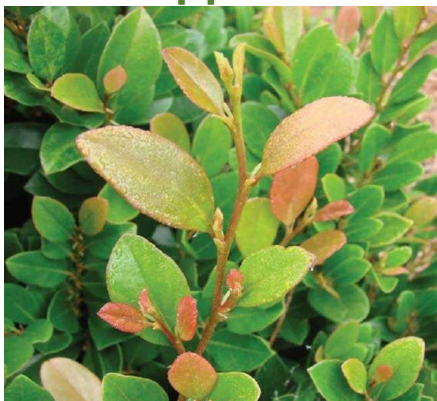
3-gallon pot, \$27.00

Height: 3—5 feet tall with a spread of 3 to 5 feet. Plant: in full sun to partial shade.

Blooms in: April - May Color: White

Happy in sun or part shade, this delightful shrub with intense red stems that glow in the winter garden and make a unique addition to holiday floral arrangements. In late spring, Cornus Arctic Fire Dogwood adds another dimension of beauty with a profusion of small flat-topped white bloom clusters followed in late summer by white berries that bring songbirds to the garden. Arctic Fire is even attractive in autumn when it sports reddish purple foliage color, proving itself a true four-season beauty. It's very low-maintenance and requires no pruning, but if you'd like to shape it or promote new stems for the best winter color, make sure you prune it right after it flowers to allow buds to set for the next year. Arctic Fire grows to only half the height. Great in perennial or shrub borders, or used in flower arrangements. Cut vibrant stems for a dynamic addition to holiday arrangements. Deciduous, Deer, rabbit, and disease resistant. Winter interest, Shade tolerant and Attracts Bees

Distylium “Coppertone” Evergreen



3-gallon pot, \$27.00

Height: 3—4 feet tall with a spread of 4 to 5 feet. Plant: in full sun to partial shade.

Blooms in: April - May

Color: Coppertone with red flowers

Happy in sun or part shade, small red berries appear in winter, but leaves are the attraction year-round with coppery red foliage turning blue-green in summer. It's very low-maintenance required but can be pruned into shapes if desired.

Deciduous, Deer, rabbit, and disease resistant. Winter interest, Shade tolerant and Attracts Bees

Forsythia, “Spring Glory” Deciduous



1-gallon pot, \$9.00

Height: 8—10 feet tall with a spread of 8 to 10 feet. Plant: Full sun to partial shade

Blooms in: Spring First shrub to

bloom Color: Yellow

Extremely showy and one of the first shrubs to bloom in spring, Spring Glory Forsythia, also commonly called yellow bells, is a deciduous flowering shrub that puts on a spectacular show of color in late winter to very early spring when its bare branches become literally smothered in bright lemon-yellow flowers. Budded branches are excellent for cutting and forcing indoors. The willowy green foliage emerges after the bloom cycle and is attractive throughout the season, turning yellow in fall. One of

those shrubs you'll always look forward to seeing it bloom! Deer Resistant, Attracts Bees and Butterflies

Fothergilla x 'Mount Airy'



1-gallon pot, \$9.00

Height: 3—5 feet tall with a spread of 3 to 5 feet. Plant: in full sun to partial shade.

Blooms in: Mid-Spring

Color: White bottlebrush type flowers

Mount Airy Fothergilla is a beautiful and very easy to grow North American native flowering shrub that produces loads of honey-scented pure-white, bottlebrush-like flower spikes at the ends of almost every branch in spring. After flowering, hand- some, leathery, blue-green leaves emerge on the upright shrub that persist through summer becoming brilliant shades of gold, orange, purple and red in fall. Excellent near garden ponds or other bodies of water in sun or part shade. Mount Airy Fothergilla is very easy to grow and virtually maintenance free when planted right and in the right spot. It prefers a moist but well-drained acidic soil of average to high fertility and sun or part shade. Deer, rabbit, and disease resistant, winter interest

Gardenia 'Frostproof'



1-gallon pot, \$9.00

Height: 3-4 feet tall, 5-6 feet wide Broadleaf evergreen shrub

Plant in full sun to partial shade, prefers well drained soil

Blooms in early spring— summer Color: snowy white

The showy Frost Proof Gardenia is low-maintenance and cold-hardy with dark-green foliage color, shiny leaves and large, snowy white blooms. The Frost Proof Gardenia is an upright, dense, evergreen that fits about anywhere and looks amazing while doing it! The fragrant white flowers are abundant from mid-spring to fall so you can enjoy the intoxicating scent for months. The double-flowered, snow-white blooms are the crowning glory of this shrub and lovely additions to floral designs and bouquets! A solitary bloom floating in a bubble bowl will scent your entire space! It's no wonder these are the most popular in weddings and boutonnieres! Reminding one of luxurious French perfume. Deer Resistant

Hydranga paniculata 'Limelight'



3-gallon pot, \$27.00

Height: 7 to 8 feet tall and 7 to 8 feet wide

Plant: Full sun to partial shade

Blooms in: Summer thru Fall, Large - up to 12" inches long Color: Chartreuse, fading to Cream and then to Pink! As the dog days of late summer set in and most flowering plants are fading out from their summer performances, one shrub will take center stage in your landscape or garden with a commanding presence similar to that of the Chinese Snowball Viburnum, the Limelight Hydrangea. With its huge, 8 to 12-inch-long snow cone-shaped flower clusters, Limelight Hydrangea puts on a spectacular show of color in the garden mid-summer through fall. The flowers of Lime- light emerge a chartreuse color turning to cream before fading to deep pink in the fall. Soil pH does not effect bloom color. As an added bonus, Limelight blooms make great cut flowers for use in both fresh or dried floral arrangements. At least 5 hours of direct sunlight per day or all day **lightly** filtered sun is suggested for best flowering. Too much shade and plants become floppy with diminished flowering.

Hydranga paniculata 'Little Lime'



3-gallon pot, \$27.00

Height: 3 to 5 feet tall and 3 to 5 feet wide Plant: Full sun to partial shade

Blooms in: Summer thru Fall, Large - up to 6" inches long Color: Chartreuse, fading to Cream and then to Pink! For those familiar with the Limelight Hydrangea the Little Lime is an amazing dwarf version. All the appeal of the Lime- light but at one third to half the size. With its magnificent flower clusters, Little Lime puts on a spectacular show of color in the garden. The flowers almost completely cover the bush, emerging a bright lime-green in summer fading to a stunning pink in the fall. The flowers are great for cutting and use in fresh or dried floral arrangements. Little Lime is a *Hydrangea paniculata* species that produces its flowers from buds that are formed on "new wood" (the current sea- son's growth). This means you don't want to prune them in late spring or summer when they're preparing to bloom.

Hydrangea Oakleaf “Snow Queen”



3-gallon pot, \$21.00

Height: 4-6 feet tall, 6-8 feet wide flowering deciduous shrub Plant in full sun to partial shade, prefers moist soil

Blooms in early through mid-summer (good for drying)

Color: pyramid-shaped panicles open white then turn pale pink and deepen to rose, foliage dark green in summer turning mahogany-red in autumn

These white flowers hold themselves with all the grace and proper posture of a queen. As these blossoms age, they'll turn a gentle light shade of pink. Once planted in your landscape, you'll be delighted to see its dense, rounded dome-shaped growing habit. The show isn't over once the blooming is done and the warmest seasons of the year are winding down. Before retiring, the foliage throws one last party by turning gorgeous shades of purple, maroon, and bronze! Adding a Snow Queen to your garden will bring **beneficial pollinators like butterflies to your yard in droves**. Sit back, relax, and watch their fluttering extravagance. This shrub will make enough panicles for you to pick a couple for a lovely bouquet while leaving enough for the butterflies to enjoy. Brighten up your living room with a cluster or two of these showy flowers!

Lantana Dallas Red



4”pot, \$5.00

Lovely Lantana for Color and Reliability

The Dallas Red Lantana checks off all the boxes! Featuring bright, orange-yellow and red blooms, hardiness and planting versatility, this beauty is irresistible to pollinators like hummingbirds, bees, butterflies, and other flying friends.

This perennial is known for its hardiness as well as drought tolerance, adaptability and pest resistance. It's impressively resilient, surviving salt, poor soil, pollution and urban environments.

Plus, it possesses endless planting capabilities, fitting in perfectly to hanging baskets and other containers, walkways, garden beds, and more. It's vine-like growth is also great as a groundcover, filling in empty spaces need...

Lantana Lucious Marmalade



1-Qt pot, \$7.00

Bright orange flowers grace extremely tough plants. They are heat and drought tolerant, wonderful summer plants. The plant is certified sterile by the University of Florida so it won't be invasive in warm winter climates.

Award Winner, Continuous Bloom or Rebloomer, Long Blooming, Heat Tolerant, Deadheading Not Necessary

Drought Tolerant. Attracts: Butterflies, Hummingbirds

Garden Height: 20 - 30 Inches Spacing: 18 - 24 Inches Spread: 20 - 30 Inches

Flower Colors: Orange and yellow

Loropetalum 'Jazz Hands Variegated'



3-gallon pot, \$27.00

Part sun to sun evergreen

Height 48-72", spacing 48-60", spread 48"

Jazz Hands Loropetalum are strong growing varieties with outstanding form, flowers and foliage.

Jazz Hands Variegated is the first ever variegated loropetalum; its new growth is splashed with pink and white variegation, while mature foliage is a rich purple color. This distinctive plant may be used as a specimen or a hedging plant. Winner of Retailer's Choice Award, SNA Show, 2015.

Jazz Hands Variegated Chinese fringe-flower is featured in our "Impressionist" magazine ad.

*****Rose 'At Last'*****



2-gallon pot, \$27.00

Height: 3 to 4 feet tall and 3 to 4 feet wide

Plant: Full Sun or Mostly Sun, Morning Sun with Dappled or Afternoon Shade

Blooms in: Spring to Frost! sweetly perfumed double flowers

Color: Orange and Apricot shades

A fabulous landscape rose anyone can grow, the At Last Rose has all the beauty and fragrance of the classic fully-petaled tea roses, but with super-high disease resistance that keeps the sprayer in the garden shed! From spring to frost you will enjoy sweetly perfumed double flowers in appealing shades of orange to apricot that shine against a background of handsome, glossy, dark green foliage. The flowers are self-cleaning so there's no need for pruning, unless you want to. A vigorous grower to around 3 feet in height with an equal spread makes the At Last Rose a fine selection for smaller garden spaces. The At Last Rose is easy to grow in most any moist but well-drained soil of average fertility and in full sun to part shade. As with all other roses, to avoid powdery mildew, morning sun is a must to dry dew from the leaves. We suggest 6 hours of direct sun light for best flowering. Disease, Drought (when established), Heat, Humidity, Visual Attention, Beneficial Pollinators. Deadheading spent flowers through the season is not necessary however will encourage more new buds and flowers.

****Viburnum Macrocephalus "Snowball"****



3-gallon pot, \$21.00

Height: 6 to 10 feet tall and 6 to 10 feet wide Plant: Full sun to partial shade

Blooms in: Summer thru Fall Color: White

Enjoy impressive flowerheads in early summer with Snowball Viburnum. This shrub grows 6-10 ft. tall with a similar spread and has a rounded, vase-shaped habit, making it ideal for flowering hedges, privacy screens and as a backdrop for perennial flower beds. Native to China, Snowball Viburnum produces 5-8 in. flowerheads that emerge lime green and turn a snowy white. The non-fragrant flowers attract butterflies. Dark green, ovate leaves are deciduous in northern climates and often semi-evergreen in warmer climates. An easy-to-grow shrub, Snowball Viburnum tolerates a range of soils, but performs best in moist, well-drained, acidic loamy soil. Attracts butterflies

*****Vitex 'Shoal Creek'*****



1-gallon pot, \$9.00

Grows 10-20ft tall

Tolerates high humidity and drought

Attracts hummingbirds and butterflies

The Chaste Tree makes a dramatic specimen addition to a garden with its fragrant violet blue flowering spikes that cover this deciduous tree from early to late summer.

The tree grows quickly and thrives in hot, dry sunny locations. It is truly one of the most spectacular trees in the South.