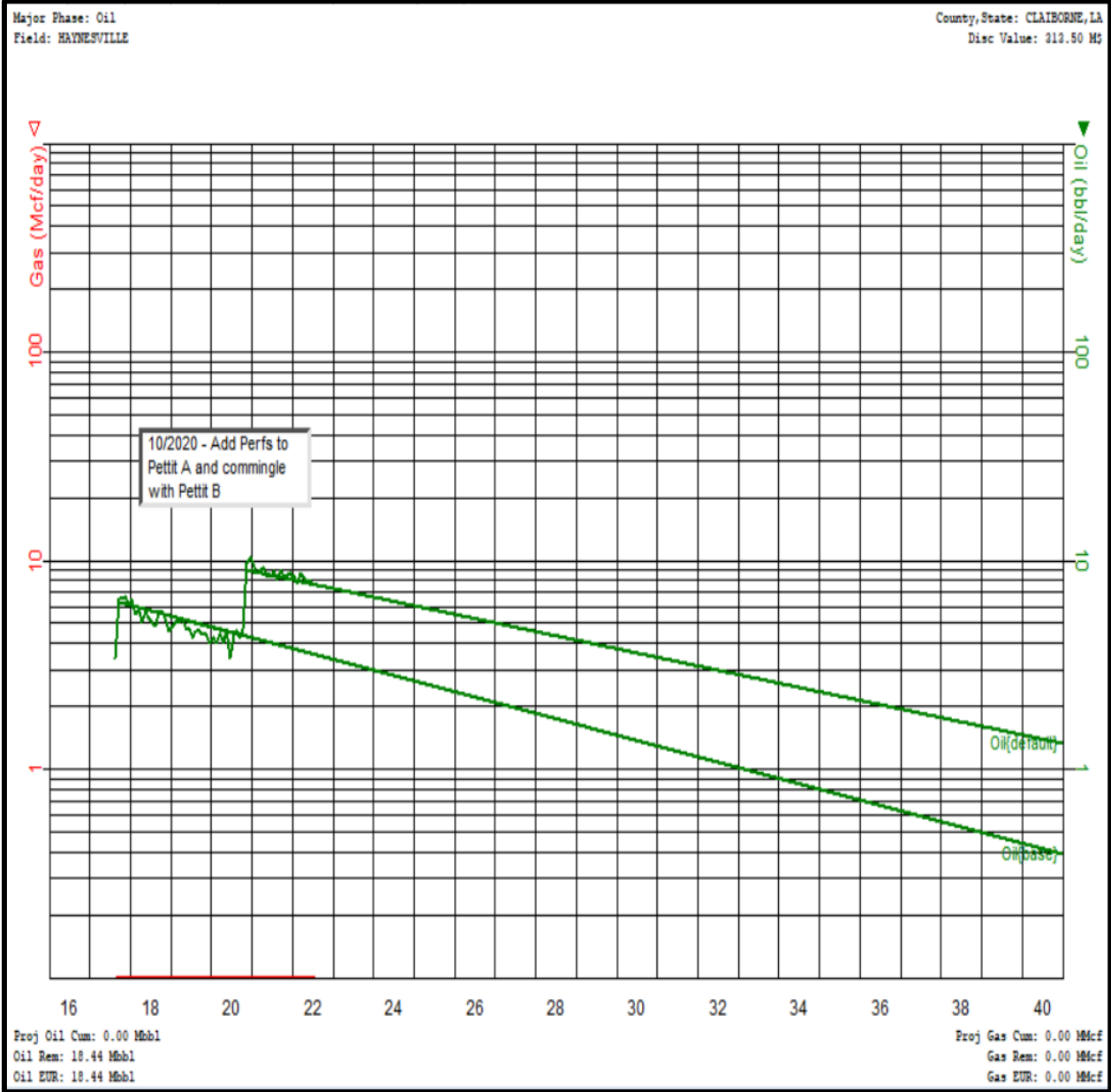
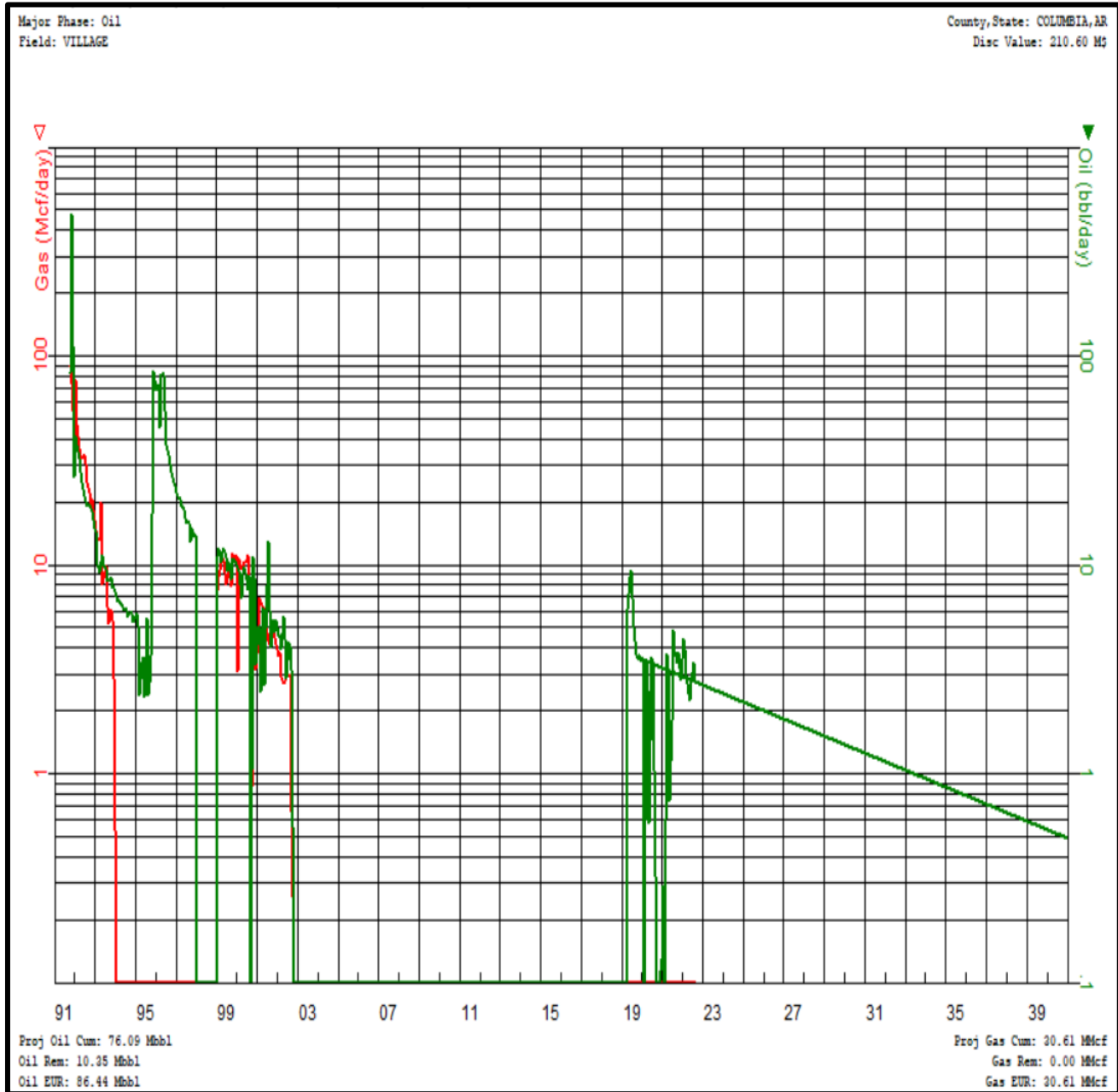


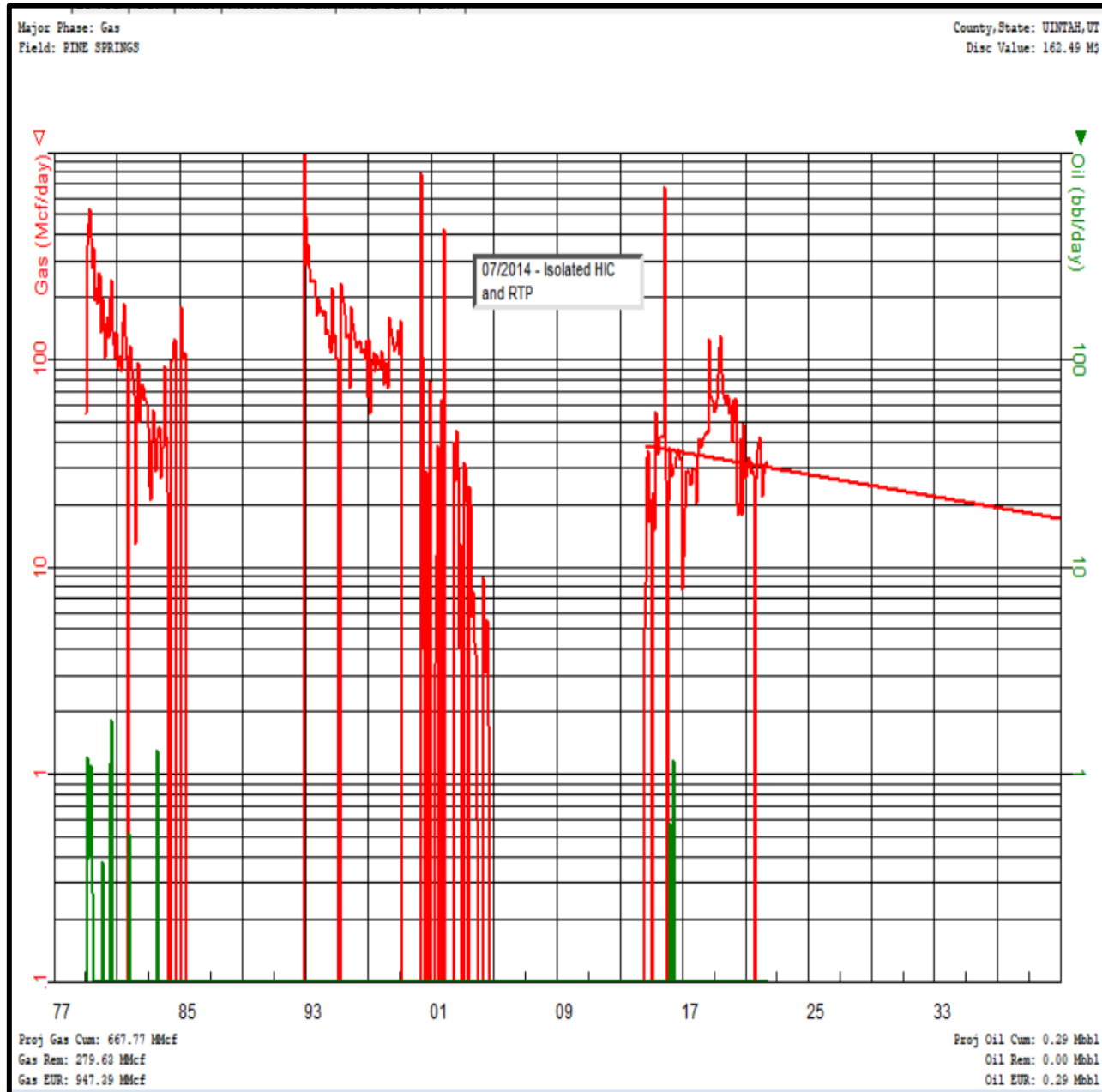
Recompletion/Reactivation Value Generated



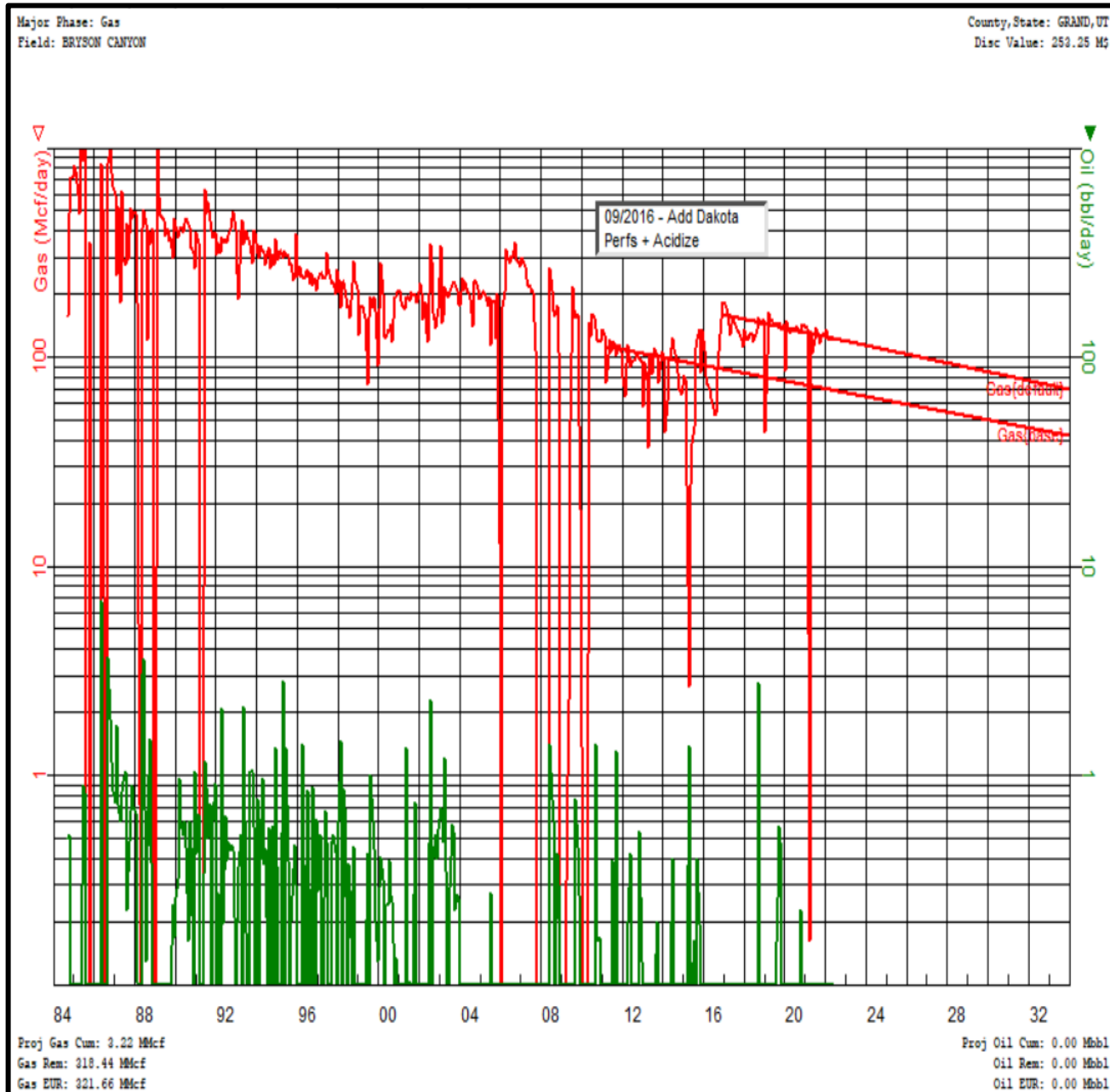
Recompletion/Reactivation Value Generated



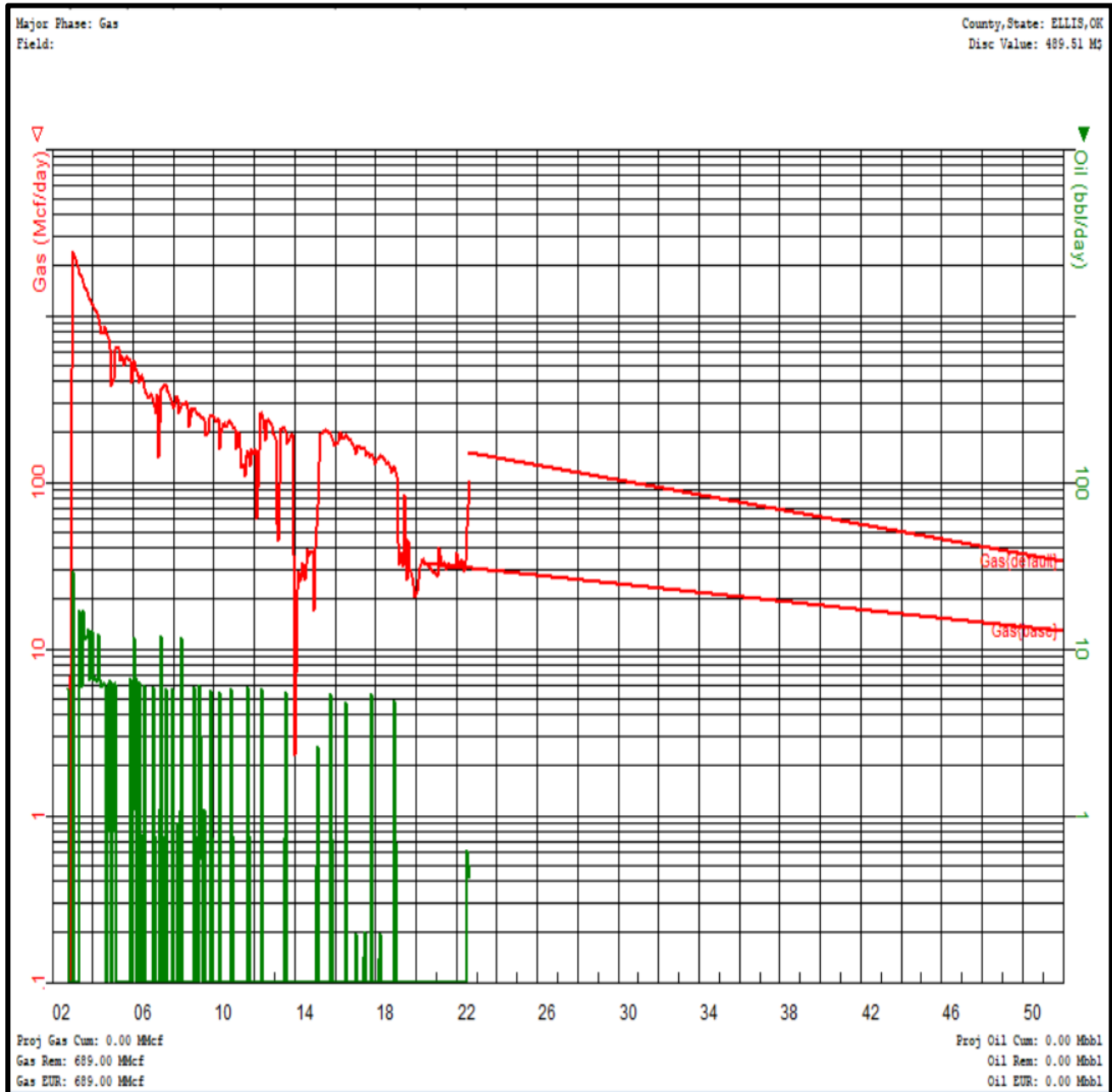
Recompletion/Reactivation Value Generated



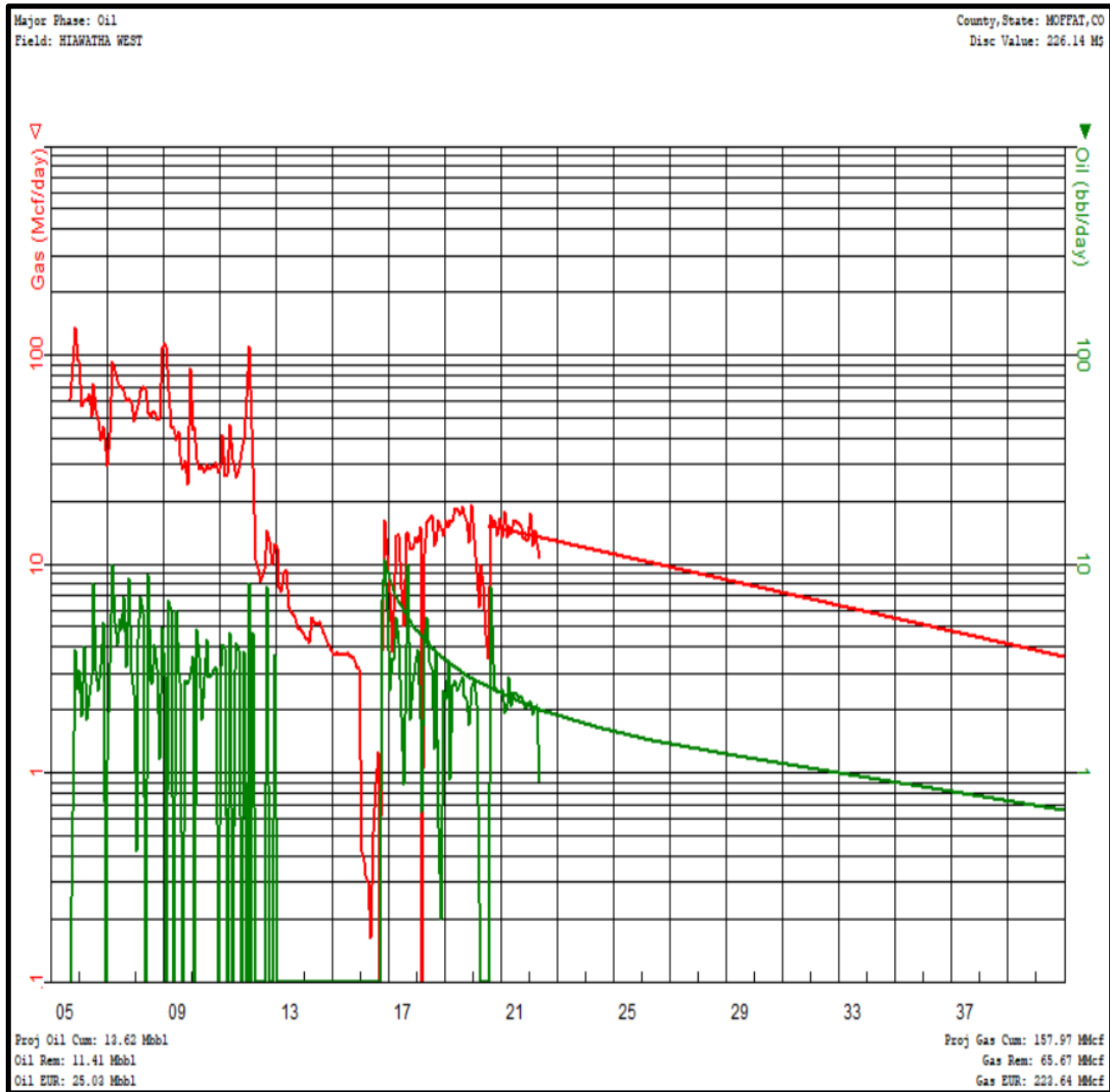
Recompletion/Reactivation Value Generated



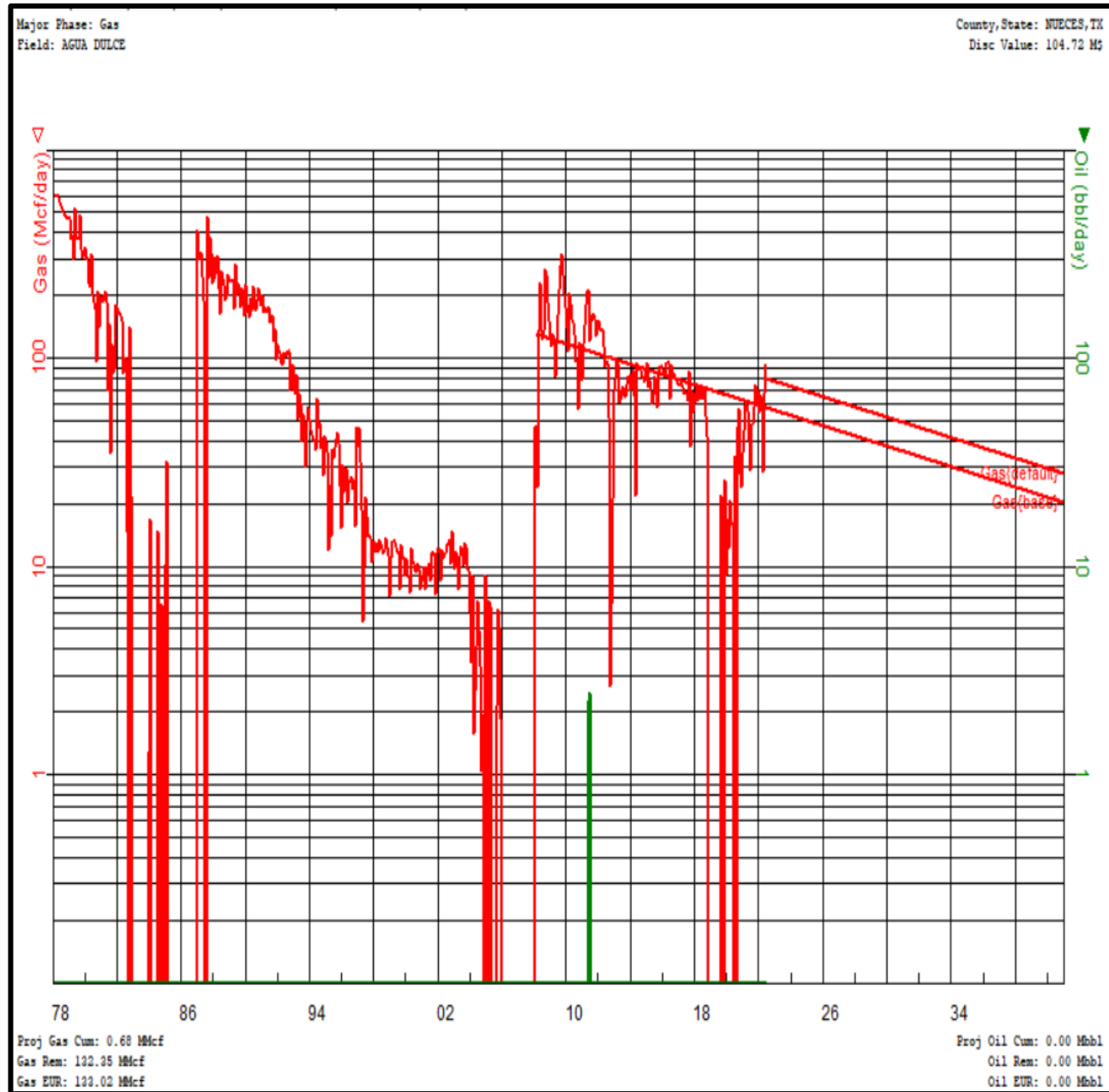
Artificial Lift Value



Artificial Lift Value



Artificial Lift Value



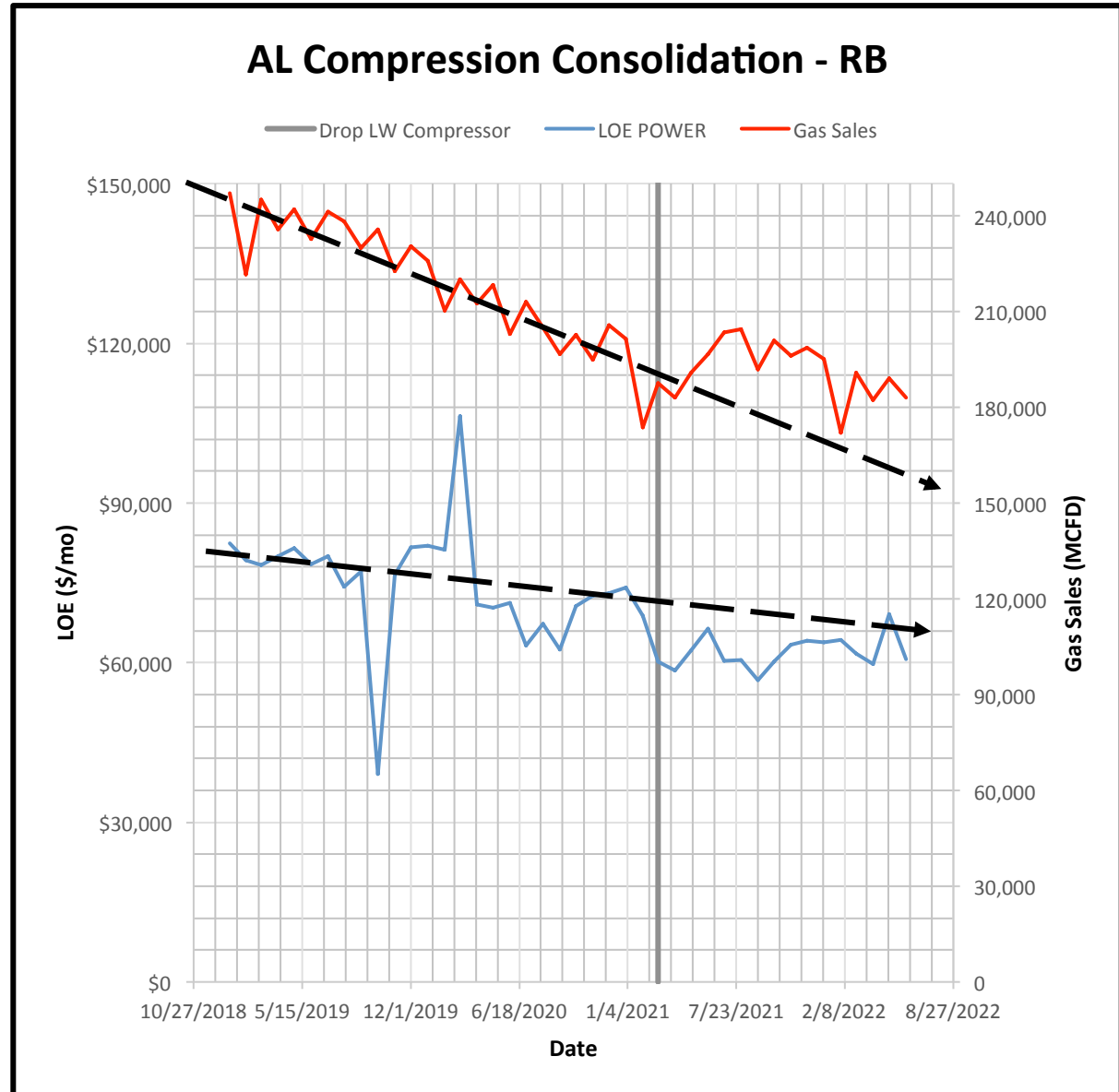
Facilities Value Generated

AL CBM Field

Moved F-18GL natural gas screw compressor to eliminate electric screw booster

Natural gas screw compressor enabled the dropping of an additional 7042 GL compressor due for an overhaul estimated at ~ \$150,000

Dropping this compressor and consolidating compression saved 100 Mcfd of fuel gas and \$8,000/mo in power



Facilities Value Generated Cont'd

AL CBM Field

Sales point had 3 electric compressors in operation

Performed analysis of compression and determined that one of the compressors could be dropped

Dropping one compressor saved ~\$15,000/mo in electricity with no change in production decline

Field also used to run a natural gas compressor + 2 electric compressors in summer to avoid peak rate. No longer need to run natural gas compressor saving 200 Mcfd of fuel gas

