

LODDON VALLEY

# Wedderburn Walking Tour

Digital Version



# Wedderburn Today

Wedderburn is a charming country town in Loddon Shire about 217km north of Melbourne and 78 km north-west of Bendigo. With a population of around 1,000, it supports the local agricultural industry and offers various retailers, arts and cultural experiences, community services and an accredited visitor information centre.

## Things to Do

### Gold Prospecting

Wedderburn's gold rush history dates back to 1852. Today, prospectors often armed with metal detectors visit the area to explore gold-bearing sites like Hard Hill, Golden Gully and Glasgow Hill. Prospecting maps are available at the Loddon Valley Visitor Information Centre, 24 Wilson St, Wedderburn.

### The Great Outdoors

Wedderburn is near Kooyoora State Park, Wychitella Conservation Reserve, and Mount Egbert, perfect for bushwalking, birdwatching, and mountain biking. It's an ideal base for outdoor enthusiasts.

### Coach House Gallery and Museum

Step into history at the Coach House Gallery and Museum, featuring a preserved general store with its original stock. There are cellars underneath, a coach house featuring an old Blacksmith forge and many historic carriages.

### Birds Eye View Murals

Explore the town's beautiful bird murals, showcasing local species like Wedged Tail Eagles and Fairy Wrens. These stunning artworks bring the area's diverse birdlife to life.

## Additional Information

Wedderburn has several accommodation options including the Goldseeker Motel and Wedderburn Caravan Park. The popular Hard Hill Tourist Reserve offers RV friendly camping by donation including access to toilets and showers. Dining options include the Wedderburn Hotel and 24 Karat Café along with take-away options.

Travellers Rest alongside picturesque Soldiers' Memorial Park in central Wedderburn is ideal for parking longer vehicles when visiting the town.

For more information, visit:  
[www.visitloddonvalley.com.au](http://www.visitloddonvalley.com.au)

or contact the  
**Visitor Information Centre**  
24 Wilson St, Wedderburn  
**Phone:** 03 5494 1257  
**Open:** Monday–Saturday 9am to 5pm,  
Sundays and public holidays 10am to 2pm.  
Closed Christmas Day and Good Friday.



## History of Wedderburn

The town of Wedderburn stands on the traditional lands of the Dja Dja Wurrung people, who have lived and thrived in this area for tens of thousands of years prior to European settlement.

In July 1836, Australian explorer Major Thomas Mitchell travelled close to present-day Wedderburn, climbing Mt Korong and surveying the surrounding country. His journey contributed to the mapping and understanding of the region, paving the way for future European exploration and settlement.

On the 10th May 1852 the land around Wedderburn was largely a sheep run when a shepherd named Brady found gold near his hut believed to be around where the old court house sits today. More gold discoveries soon followed and by the end of the year 7,000 enthusiastic diggers had arrived to make their fortune.

Today Wedderburn is a welcoming regional town servicing the surrounding farming industry and home to approximately 1,000 people. Visitors enjoy the gold rush heritage, natural attractions and of course old fashioned country hospitality.



Above: Coach House Gallery and Museum, 51 High Street, Wedderburn

Loddon Valley Tourism would like to thank the Wedderburn Historical Records Museum Inc. for their valuable assistance with this publication.





**Commence your tour** from the front of the Visitor Information Centre,  
24 Wilson Street, Wedderburn

## 1 Wedderburn Primary School

24 Wilson Street, Wedderburn

A National School (Common School No. 665 Wedderburn) was originally opened in 1861, making use of the Wesleyan Chapel, then in High Street, for four years before moving to a new building here on the corner of Wilson and Chapel Street in 1865.

The school later became a Higher Elementary School with several school buildings from nearby rural settlements being moved to the site to accommodate the additional students.

In 2001 the school closed when it was amalgamated with the local P-12 College. Today the grand old state school building continues to serve the community through its repurposing as a Community House, Health Clinic and Visitor Information Centre.



**Commence your walk north**  
towards the old Presbyterian Church

## The Presbyterian Church

38 Wilson Street, Wedderburn

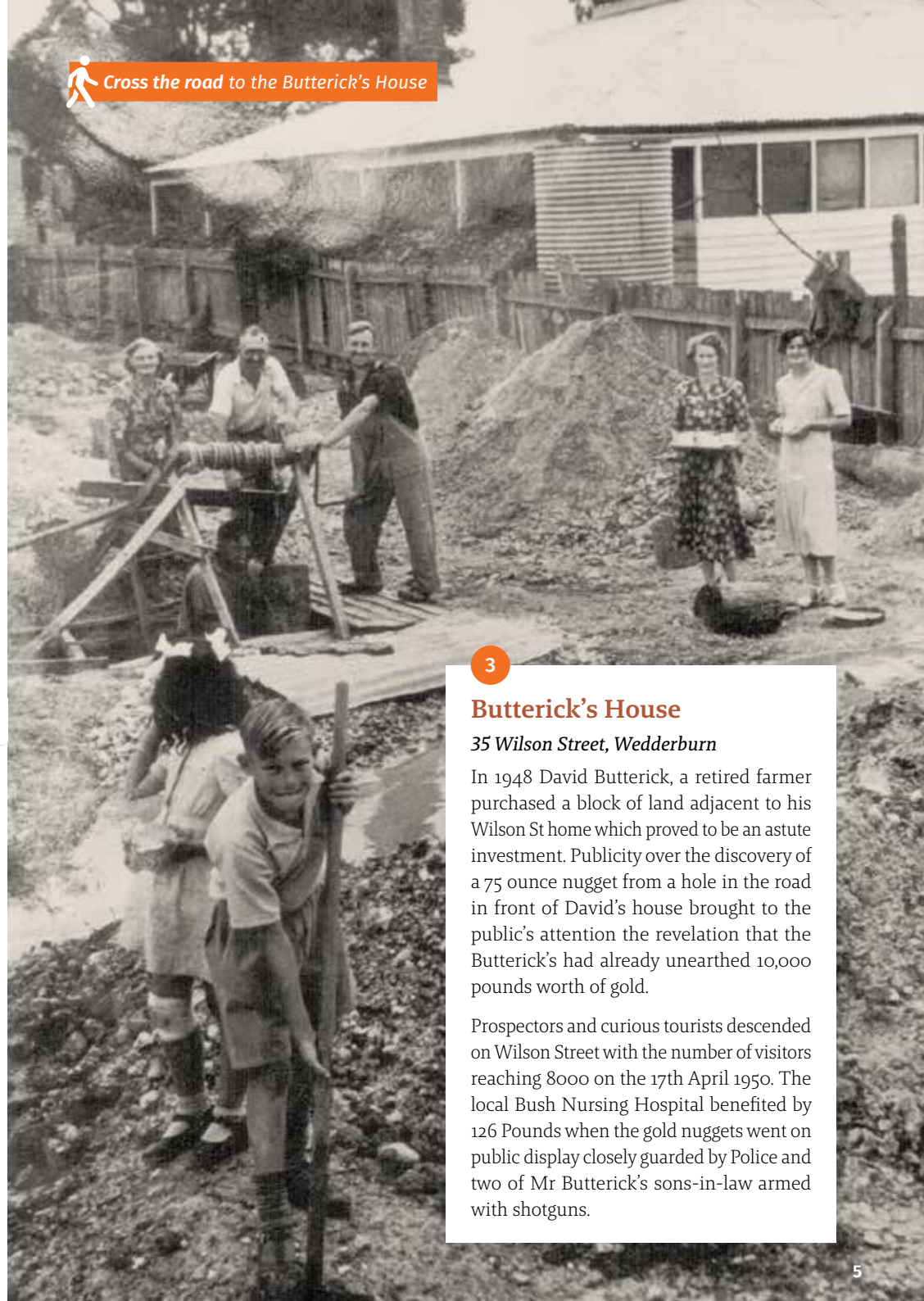
The Presbyterian Church was constructed in 1868 with the foundation stone being laid by Mr Robert Steel (opposite) on the 11th July. The Colonial style church building admirably served its congregation for over 120 years before being transferred to the Shire of Korong in 1981 for the purposes of erecting Lone Person units.



2



**Cross the road to the Butterick's House**



3

## Butterick's House

35 Wilson Street, Wedderburn

In 1948 David Butterick, a retired farmer purchased a block of land adjacent to his Wilson St home which proved to be an astute investment. Publicity over the discovery of a 75 ounce nugget from a hole in the road in front of David's house brought to the public's attention the revelation that the Butterick's had already unearthed 10,000 pounds worth of gold.

Prospectors and curious tourists descended on Wilson Street with the number of visitors reaching 8000 on the 17th April 1950. The local Bush Nursing Hospital benefited by 126 Pounds when the gold nuggets went on public display closely guarded by Police and two of Mr Butterick's sons-in-law armed with shotguns.



**Continue walking north** along Wilson Street



4

## Church of Christ

*Corner of Wilson Street and Reef Street, Wedderburn*

The history of the Church of Christ in Wedderburn begins in 1864 when four Christian Brethren of Baptist denomination became convinced of a duty to form themselves into a New Testament order.

The original chapel (the smaller of the two buildings) was built in 1872 with the larger chapel being constructed in 1903. There was once a residence to the West of the chapel where the Preacher and his family resided.



**Arrive** at the historical grave site of Catherine Rinder



5

## Historic Grave of Catherine Rinder

*Wilson Street, Wedderburn*

Catherine Rinder died from a lung ailment on February 8, 1859, at the age of 18. Her husband, Sam Rinder, was the founding Secretary of the Shire of Korong. Sam was 36 years old when Catherine passed away, though the date of their marriage is unknown. Sam later remarried and fathered four children.



**Walk through the grounds** of the Wedderburn RSL to High Street



6

## Wedderburn/Korong Vale RSL

*High Street, Wedderburn*

The Wedderburn/Korong Vale RSL building was originally a store run by local pioneer Robert Steel. It was the first building in Wedderburn to be supplied with electricity sourced from a nearby gold dredge. The club rooms have been well maintained over the years by its members who welcome visitors for a drink on Friday nights.



**On the left** is the historic Royal Hotel



7

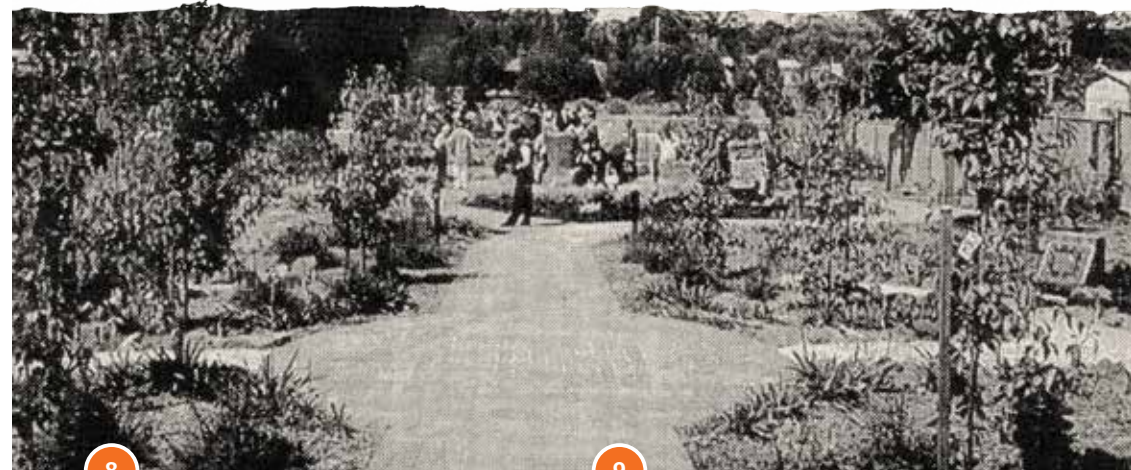
## The Royal Hotel

*118 High Street, Wedderburn*

The Royal hotel opened for business in 1863 and closed in 1970. The historic double brick building has seven bedrooms and once drew public attention when the publican began digging for gold in the hotel's back yard during the mini gold rush of the 1950s.



**Cross over High Street** to Ted's Garden



8

## Wedderburn Community Garden

*111 High Street, Wedderburn*

Known as 'Ted's Garden' after Mr Edward (Ted) Hargreaves, who transferred the property to the Loddon Shire Council for the community to establish a garden. Pride of Place funding from the department of Infrastructure in 1999 enabled the garden to be constructed. Garden artworks include a kangaroo chair and local artisan's work.

9

## The Kangaroo Chair

*111 High Street, Wedderburn*

The Kangaroo Chair is a community project representing the spirit of Federation, and is symbolic of both the natural environment and home. Children from across the Loddon Shire contributed drawings to celebrate 100 years of the Commonwealth of Australia.



**Turn right** at the end of Ted's Garden  
on Nardoo Creek Walking Track





**Enjoy a short walk** along Nardoo Creek towards town  
Take Reef Street back to High Street



## 10 The Miners Literary Hall and Mechanics Institute

*Corner of High Street and Reef Street, Wedderburn*

The original Mount Korong Miners Literary Institute was built in 1859 and now forms part of the 'old hall' facing High Street. The Wedderburn Mechanics Institute Building was added in 1913 and continues to serve the Wedderburn community today.

The original brick hall was built by Joseph Morecroft (seen in the photograph standing at the door). Along with his wife Martha, he also built and ran the original Wedderburn Hotel.



**Walk south** along the footpath towards Soldiers' Memorial Park  
Look across the road to the Wedderburn Hotel



## The Wedderburn Hotel

*74 High Street, Wedderburn*

The Wedderburn Hotel has its origins in the exciting days of the gold rush in the early 1850s and has seen many changes in its transformation to the establishment you see today.

For many years the hotel boasted extensive stables and a livestock sale yard where surrounding farmers would come and conduct business before availing themselves of some good old fashioned hospitality on offer at the hotel.

Today the Wedderburn Hotel continues to offer that same country hospitality it has been renowned for since the days of serving thirsty miners who paid with nuggets of gold.

Built by Joseph Morecroft in 1853, the Morecroft family ran the hotel continuously for 75 years until 1928 when it was taken over by Joseph Daniel.



**Continue** to Soldiers' Memorial Park and enter



12

## Soldiers' Memorial Park

*Corner of High Street and Chapel Street, Wedderburn*

The park before you is the site of the old Korong Flour Mill that burnt down in 1919. The local RSL purchased a portion of the land for 140 pounds with the intention of erecting a Soldiers Memorial. The chosen design was costed at 475 Pounds with the community raising the majority of the amount needed. On Anzac Day 1921 the Queen of Queens, Miss Winnie Guthrie unveiled the new Wedderburn Soldiers Memorial. In the 1940s the park was also used as a bowling green.



**Continue walking** through the park  
until you reach Travellers Rest



14

## Travellers Rest

Travellers Rest is situated on what was once the eastern portion of the old flour mill (above). The Country Fire Brigade built a Fire Brigade Hall on the site which was later used for Guides, Brownies and Cubs as a meeting room.

## 13 The Jacka Memorial Gates

*Corner of High Street and Chapel Street, Wedderburn*

The Jacka Memorial Gates were opened on 6 April 1958 in the presence of 2500 people including 30 veterans who fought alongside Captain Albert Jacka in the 14th Battalion.

Captain Albert Jacka was the first Australian to gain the coveted V.C. Award for an act of bravery while fighting in Gallipoli in 1915. Jacka would later receive the Military Cross for his military efforts in France in 1916.



**Cross the road** and marvel at the beautifully painted Uniting Church



## 15 Uniting Church

60 High Street, Wedderburn

This iconic Wedderburn church, built in 1866 to serve the Methodist families who settled here after the gold rush, stands as a testament to the town's rich history. The Gothic Revival architecture, with its classic brickwork, captures the spirit of 19th-century design. Now adorned with a stunning mural as part of the Wedderburn Birds Eye View art project, the church's front facade has become an even more captivating landmark blending historic charm with vibrant contemporary art.



**Retrace your steps** back to the corner of High Street and Chapel Street  
Cross Chapel Street and walk south to the Coach House Gallery and Museum

c.1910

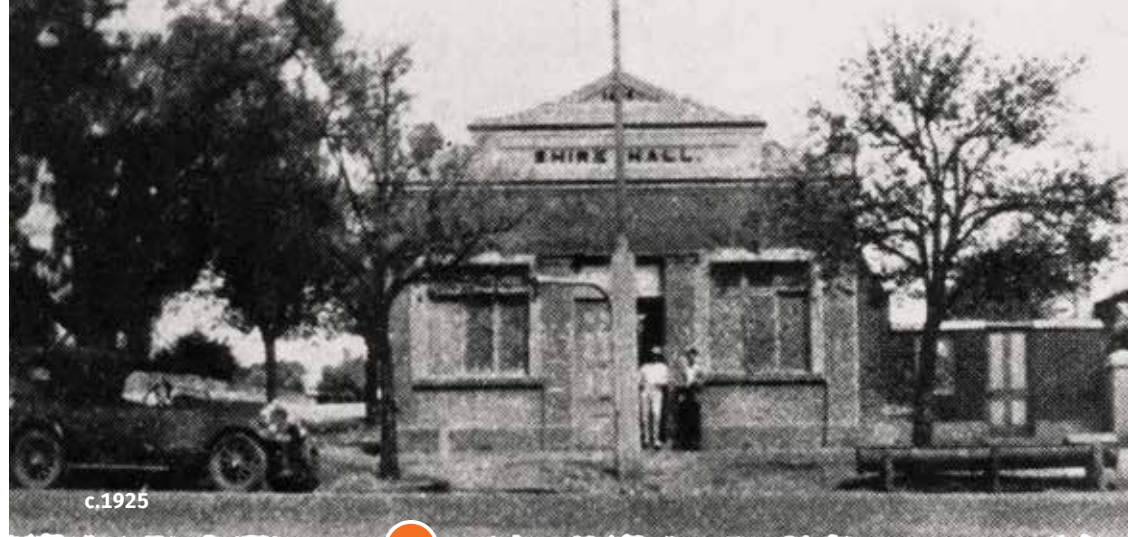


16

## Coach House Gallery and Museum

51-53 High Street, Wedderburn

The Coach House Museum and Art Gallery, located in the former 'Smith & Sons' General Store built in 1913, captures a slice of Wedderburn's past. Once owned by figures like W.B. Smith, Horace Holmes, and Cliff Coates, the store served the community until its closure in the early 1960s. Today, the museum offers a perfectly preserved time capsule, with much of the 1960s stock still on the shelves. In addition to the old general store, a cellar and rear display area showcase historic carriages, an original Blacksmith forge and a blend of local history and art creations.



c.1925

17



**Walk south along Main Street** to the Old Shire of Korong Hall on the corner of Kerr Street

## Old Shire of Korong Hall

44 High Street, Wedderburn

This marvellous building was erected in 1874 by Samuel Rinder for use as a general store. In 1878 it was leased to the local council for 80 pounds per annum on the condition that Mr Rinder provide a council chambers and staff offices. The council called these chambers home for the next 88 years with the remaining water trough no doubt quenching many a weary horses' thirst.



**Walk west along Kerr Street** until you reach the Holy Trinity Anglican Church



18

## Holy Trinity

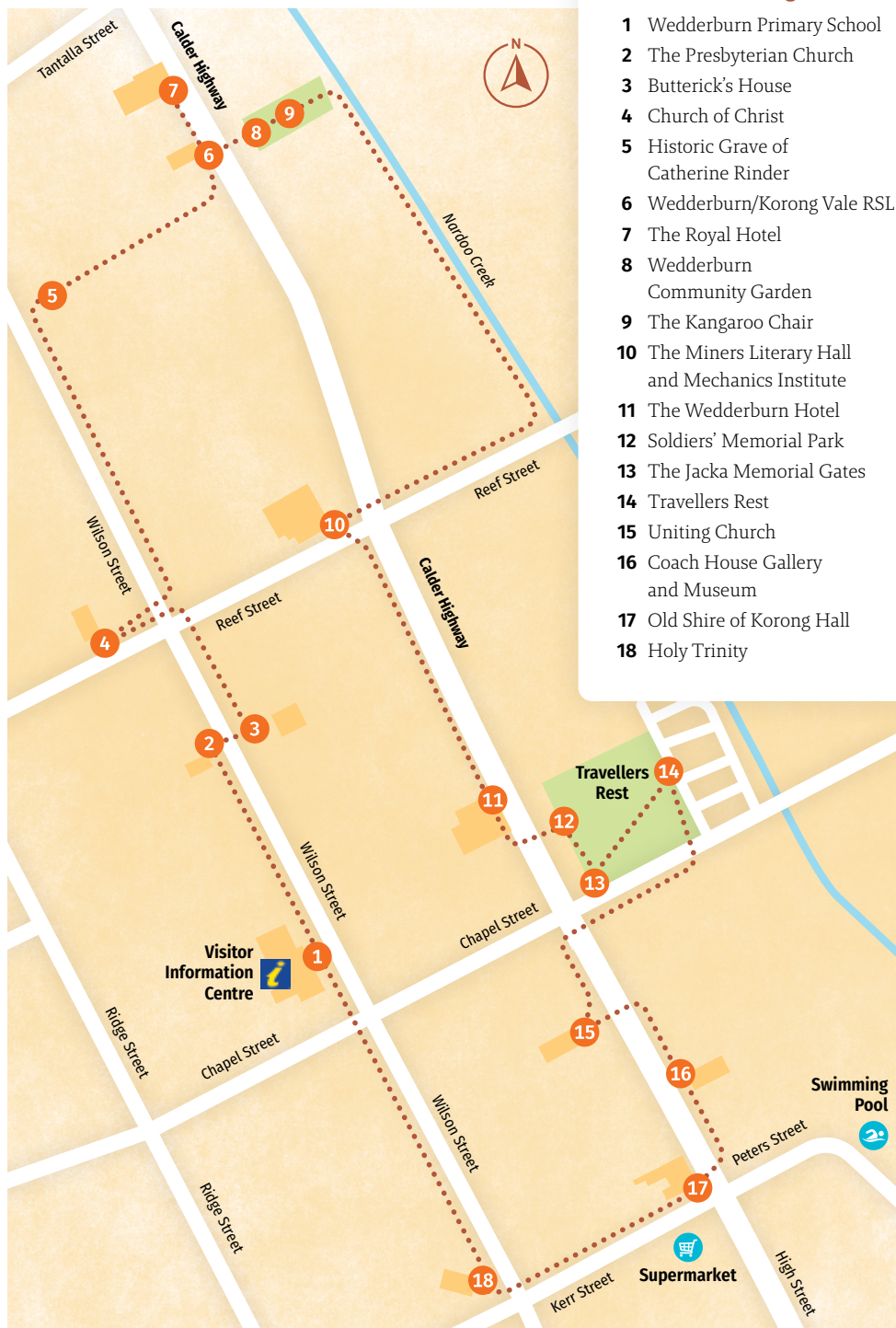
16 Wilson Street, Wedderburn

The first stone of this beautiful church was laid in 1866 after its Minister Reverend Hose raised donations of time and money from generous diggers working the surrounding gold fields. Of the many children who were baptised here, Albert Jacka v.c. stands out being initiated into the church on the 28th of July, 1897



**Walk north along Wilson Street** returning to your starting point at the Wedderburn Visitor Information Centre.





### Wedderburn Walking Tour

- 1 Wedderburn Primary School
- 2 The Presbyterian Church
- 3 Butterick's House
- 4 Church of Christ
- 5 Historic Grave of Catherine Rinder
- 6 Wedderburn/Korong Vale RSL
- 7 The Royal Hotel
- 8 Wedderburn Community Garden
- 9 The Kangaroo Chair
- 10 The Miners Literary Hall and Mechanics Institute
- 11 The Wedderburn Hotel
- 12 Soldiers' Memorial Park
- 13 The Jacka Memorial Gates
- 14 Travellers Rest
- 15 Uniting Church
- 16 Coach House Gallery and Museum
- 17 Old Shire of Korong Hall
- 18 Holy Trinity