



**Empowering community voices
to implement equitable climate
solutions for unity, resilience,
and justice.**



About Our Vision

At Climate Resilient Communities, we have a clear vision of a future where under-resourced communities are empowered to take action to stay safe in the face of climate change impacts. We seek to:

- Advocate for community-driven strategies and priorities
- Increase collaborative efforts with cities and community leaders
- Engage communities directly in climate change planning
- Secure financial support to implement community-based solutions providing opportunities for residents
- Mainstream climate change in schools and youth programs



Resilient Homes

Helps residents navigate service options available and the complex application processes these services require.



Resilient Adaptation

Creating action-oriented projects, including contributions to city-wide adaptation, resilience planning, to interventions for residents & families.



Resilient Education

Increases awareness & understanding of impacts in frontline communities, particularly among youth.



Regional Leadership

Leading regional, coalition based convening, advocacy, and awareness engagements designed to network our stakeholders, residents, & partners ensuring a voice for all.

Our Programs





Climate Change Community Teams (CCCTs)

○ CCCT Built & Implemented

○ CCCT In Development



Senate Bill No. 1000 (Adopted 2016)

- A “chapter” in a city or county’s General Plan
- Environmental Justice a vital part of the Planning Processes
- Applies to local government that have one or more disadvantaged communities.
- Plans are reviewed by the state for adequacy

Senate Bill No. 1000

CHAPTER 587

An act to amend Section 65302 of the Government Code, relating to land use.

[Approved by Governor September 24, 2016; Filed with Secretary of State September 24, 2016.]

LEGISLATIVE COUNSEL'S DIGEST

SB 1000, Leyva. Land use: general plans: safety and environmental justice.

(1) The Planning and Zoning Law requires the legislative body of each county and city to adopt a comprehensive, long-term general plan for the physical development of the county or city and of any land outside its boundaries that bears relation to its planning. That law requires this general plan to include several elements, including, among others, a safety element for the protection of the community from unreasonable risks associated with the effects of various geologic hazards, flooding, wildland and urban fires, and climate adaptation and resilience strategies. That law requires that the safety element be reviewed and updated, in the case of flooding and fire hazards, upon the next revision of the housing element after specified dates or, in the case of climate adaptation and resilience strategies, upon either the next revision of a local hazard mitigation plan after a specified date or on or before January 1, 2022, as applicable. That law also requires, after the initial revision of the safety element to address flooding, fires, and climate adaptation and resilience strategies, that for each subsequent revision the planning agency review and, if necessary, revise the safety element to identify new information that was not available during the previous revision of the safety element.

Senate Bill in Context



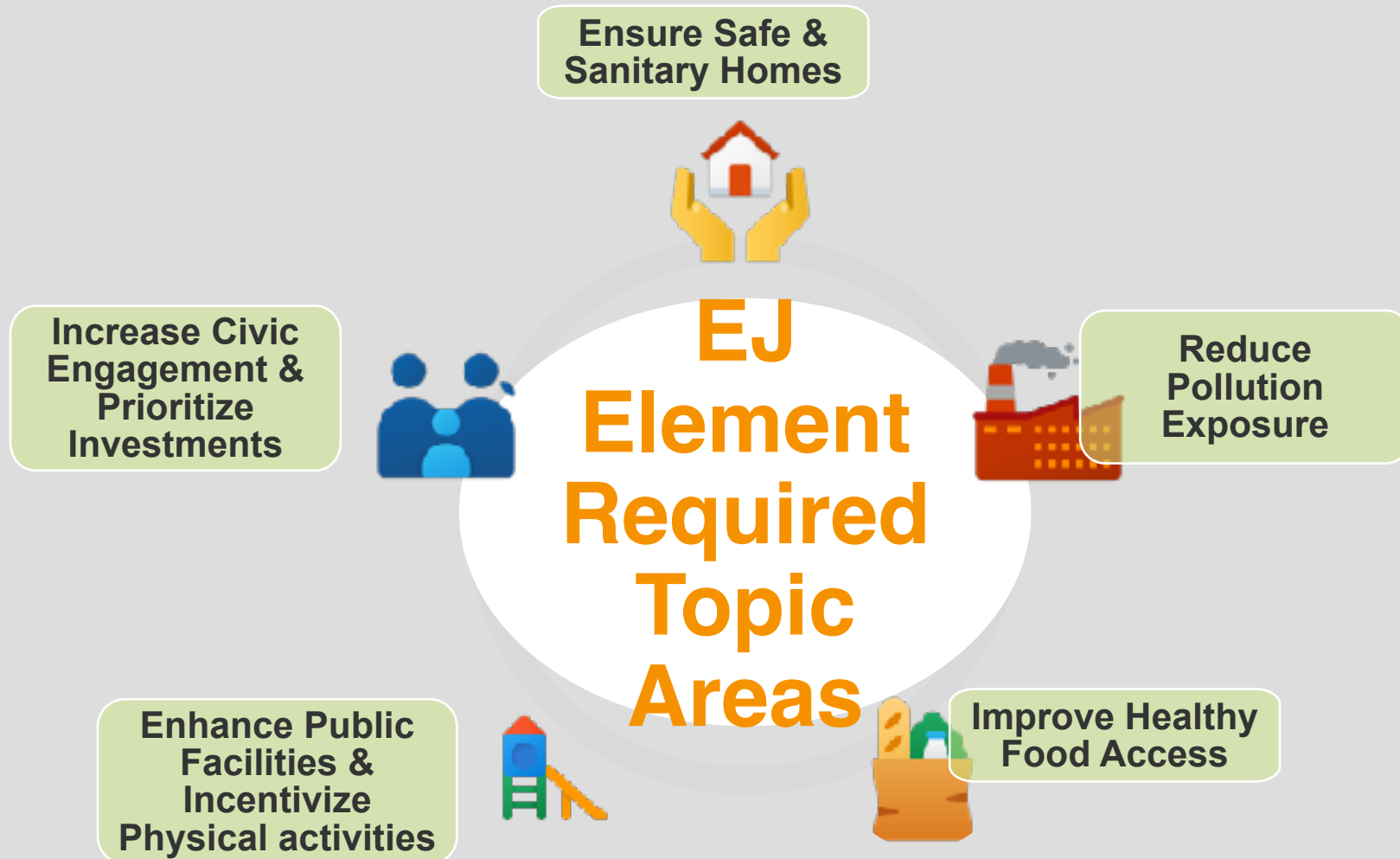
→ In disadvantaged communities:

- Reduce pollution exposure and improve air quality
- Promote public facilities
- Promote food access
- Promote safe and sanitary homes
- Promote physical activity

→ Engage the community in decision-making

→ Prioritize improvements and programs that address needs in disadvantaged communities

HOW DO WE STRIVE FOR ENVIRONMENTAL JUSTICE?

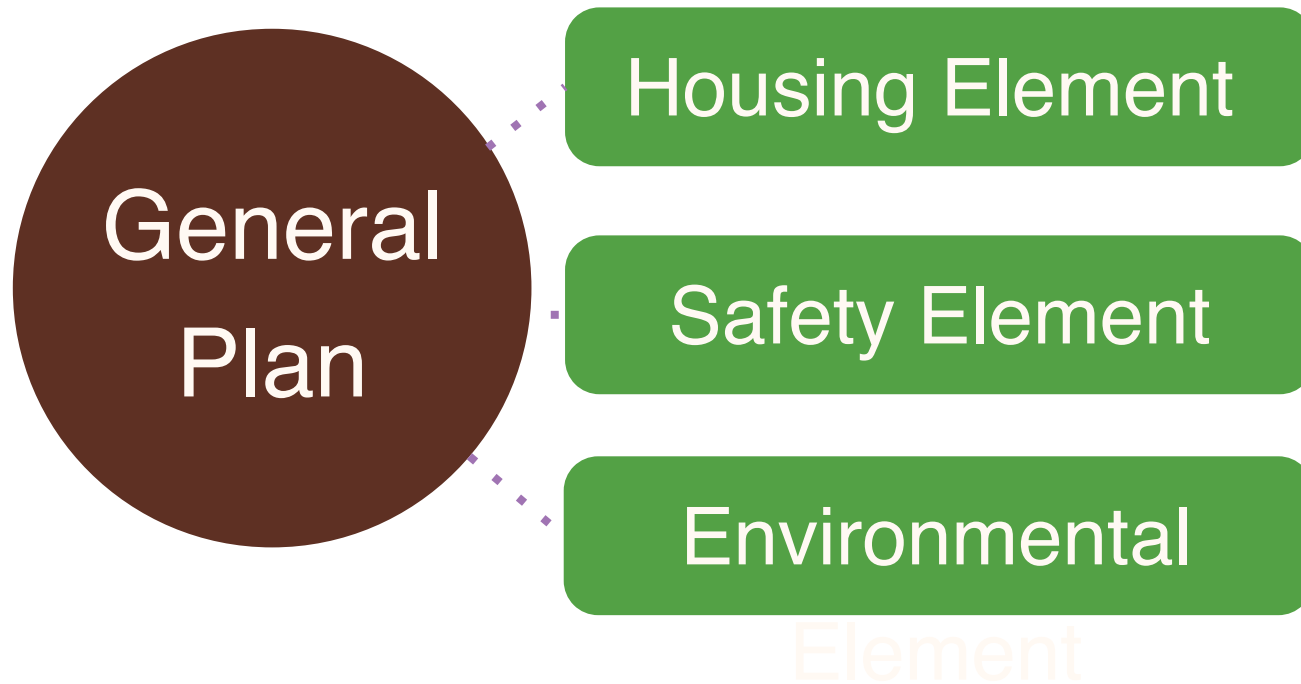




Introduction to Belle Haven



Two Updated Elements + 1 New Element



Overall Goals



Balanced
Community



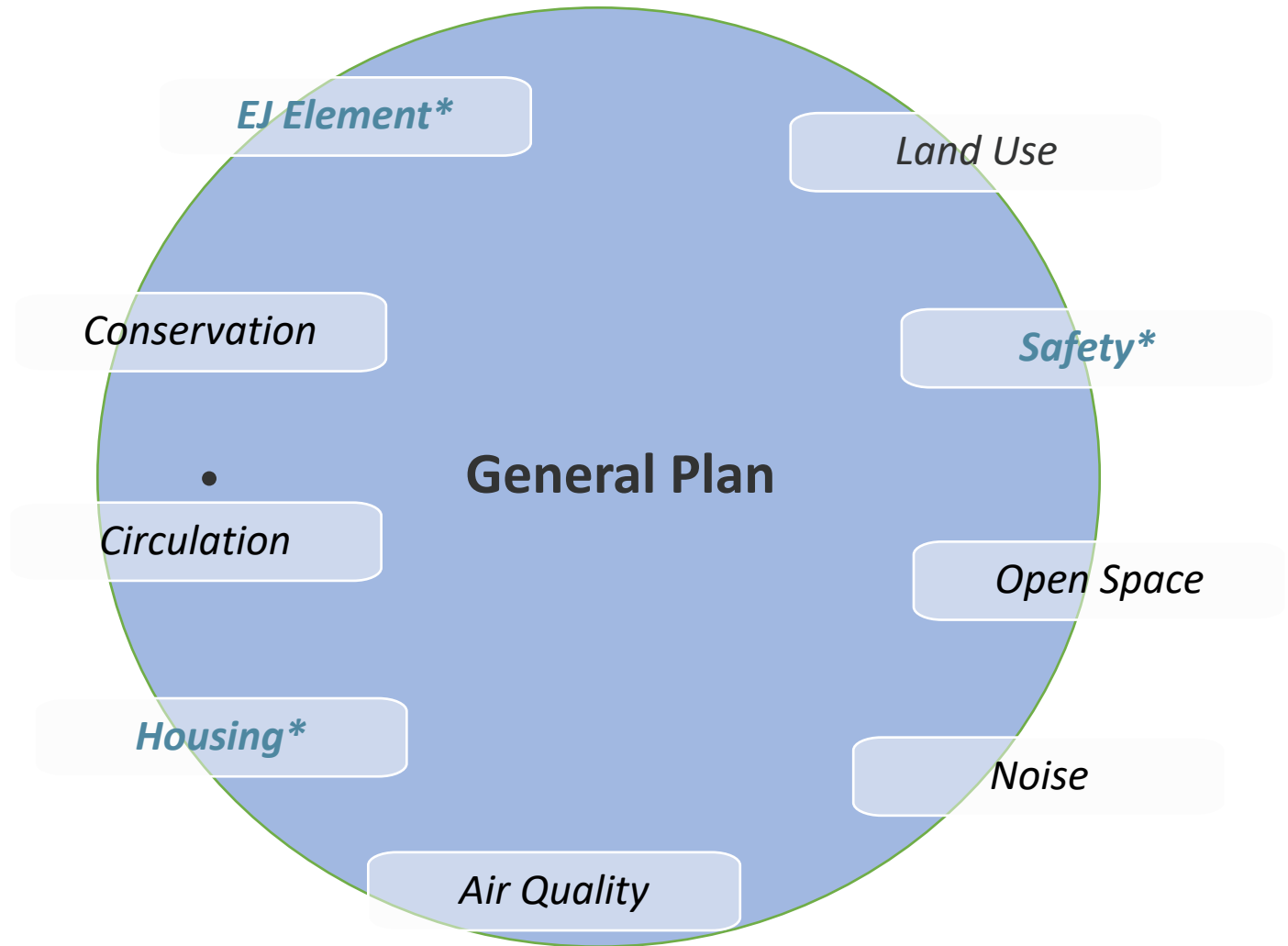
Affordability
Focused

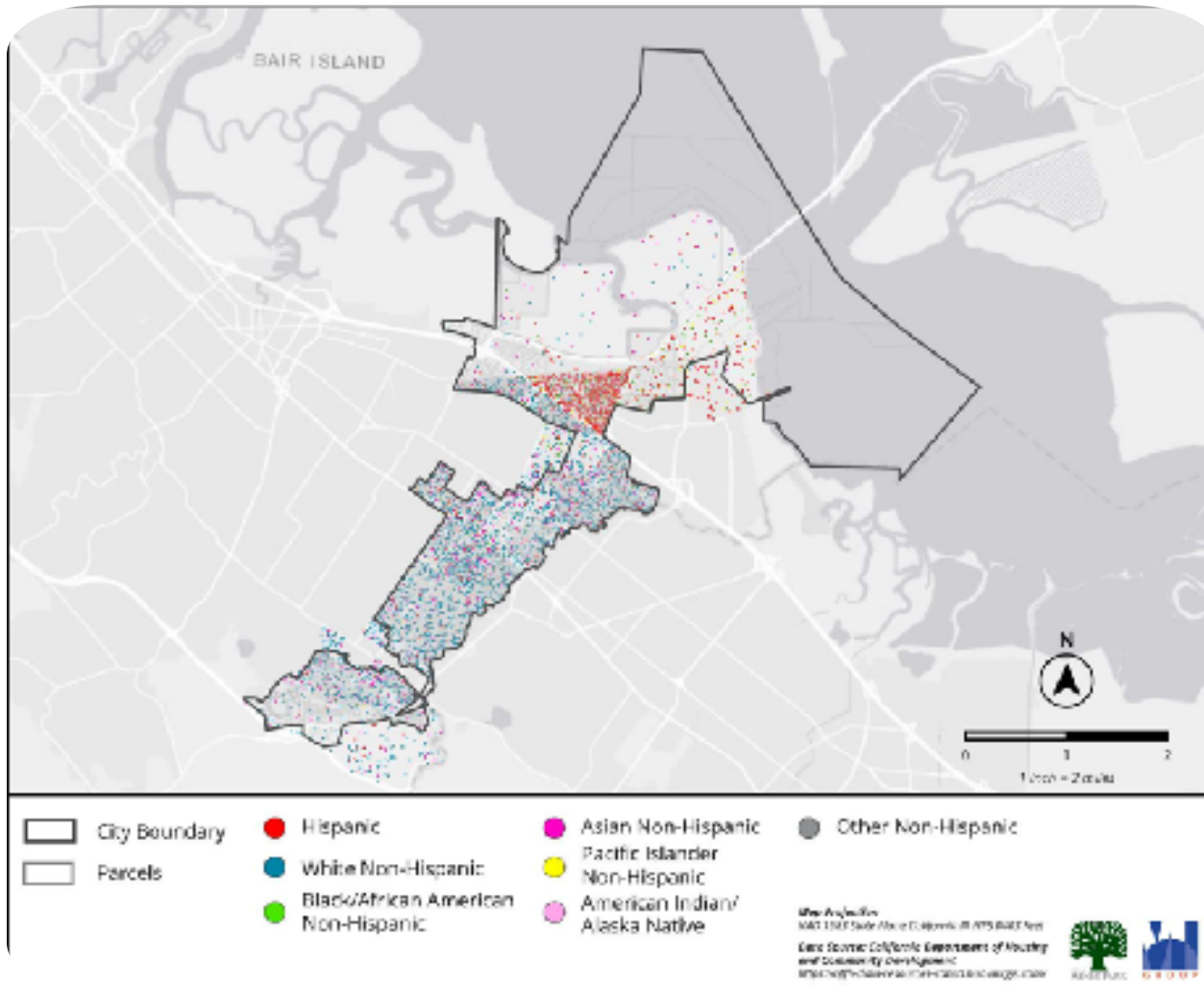


Social
Justice

General Plan Elements

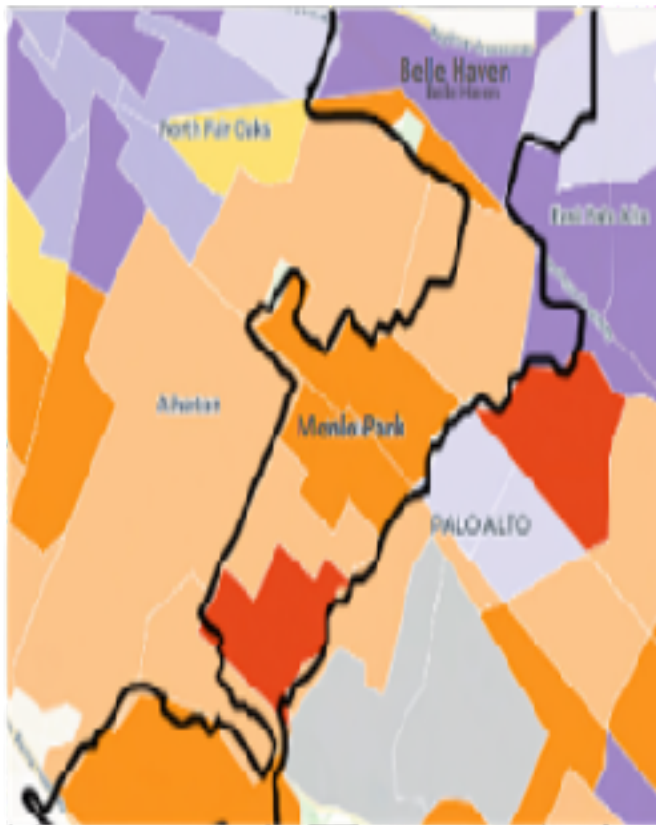
- •Guides Planning decisions across the community
- •Housing Element Update Project Component
- •SB1000





Legacy of Redlining





Urban Displacement Project

→ At risk of displacement and gentrification

→ Increasingly becoming exclusionary communities



At Risk of Displacement and Gentrification

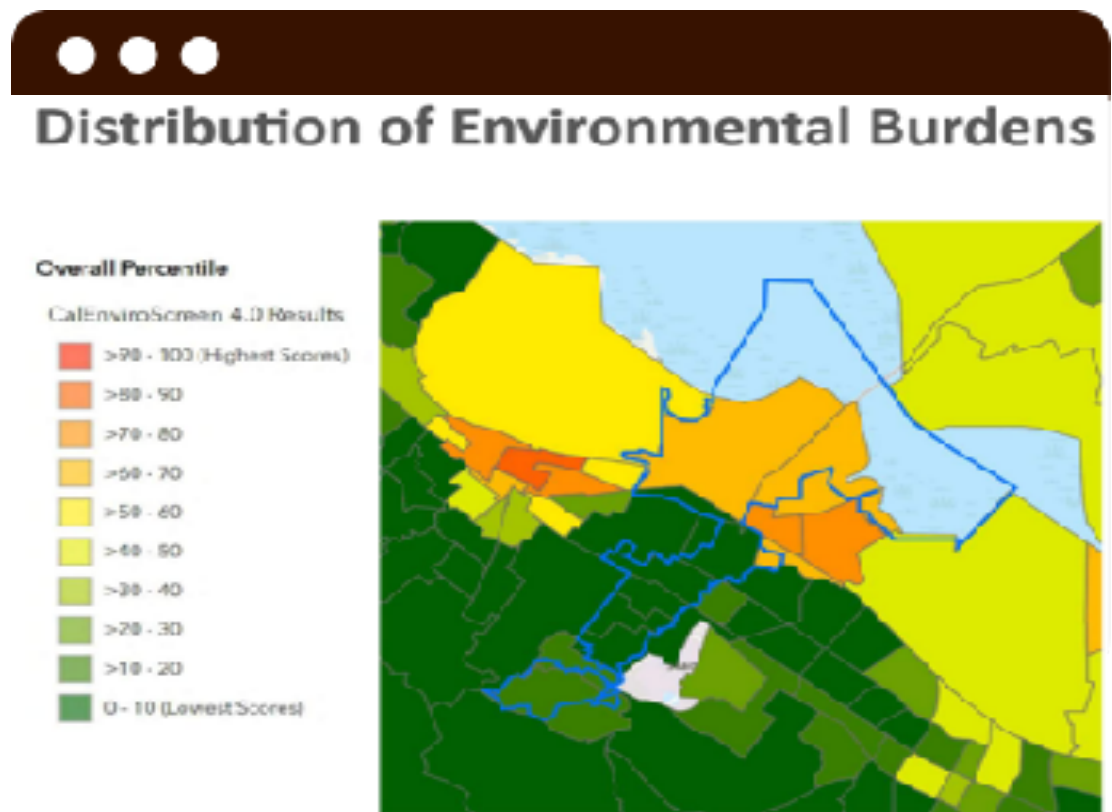
Increasingly Becoming Exclusionary Communities



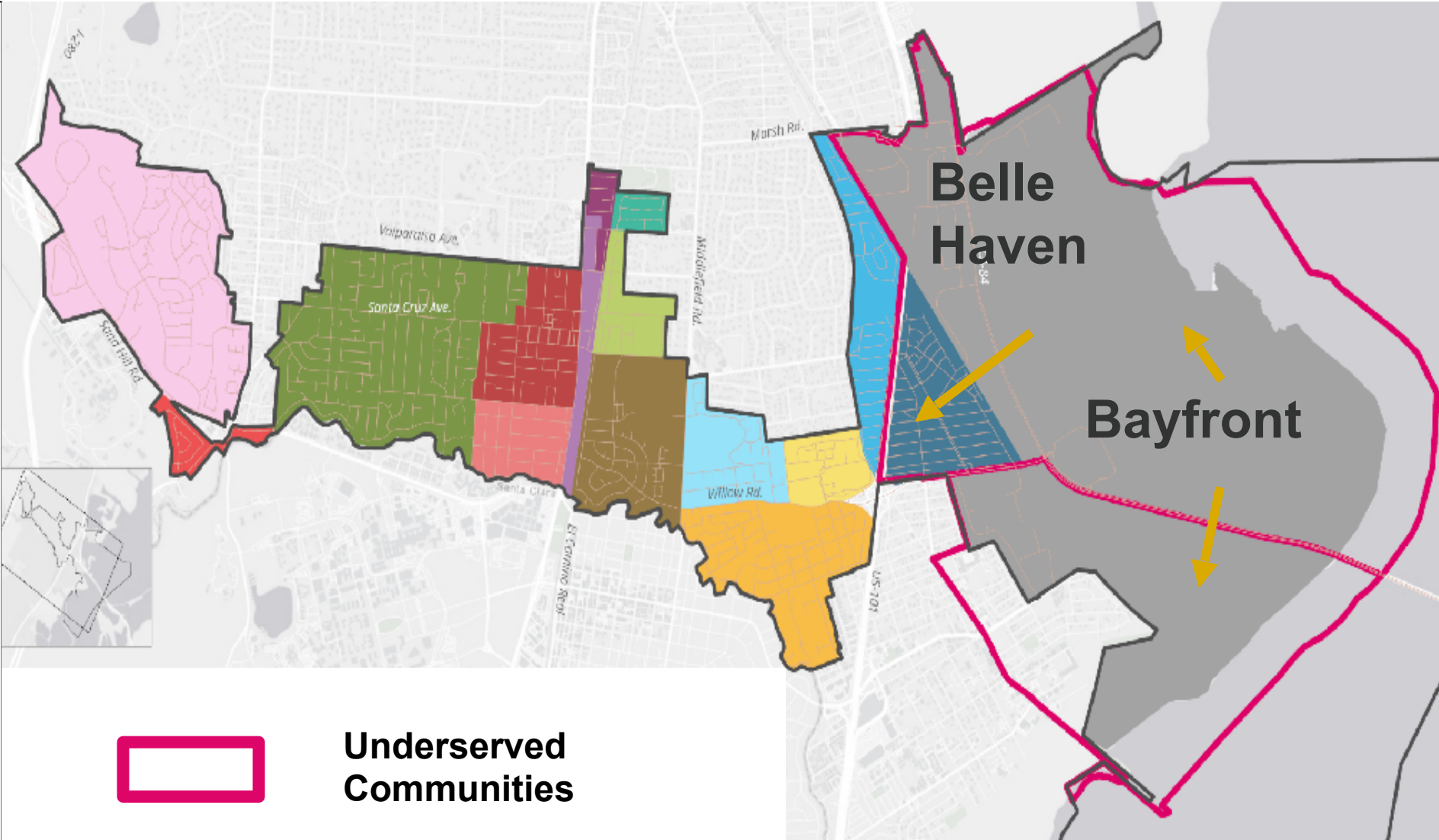
Belle Haven & Bayfront



Distribution of Environmental Burdens



Locate communities that face unique, unequal, and unfair health risks



Menlo Park

Environmental Justice Element



→ **Focused on Belle Haven, historically redlined portion of MP now facing multiple, compounding vulnerabilities**

→ **Demographics:**

- Total Population: ~7,000
- Total # of People Engaged in EJE: ~2,000
- 1.5 year process, still ongoing
- 61% Latino
- 11% Pacific Islander
- 10% Black





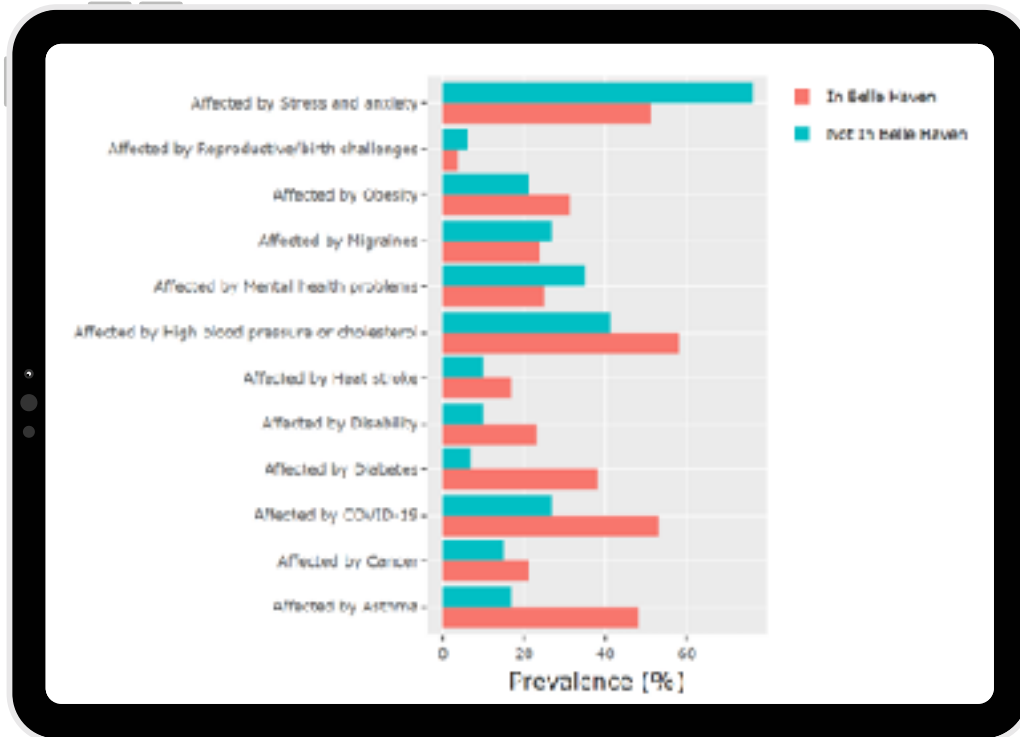
Outreach Methodology: CCCT

- Composed of interested residents, non-profit leaders, and members of the faith community
- The team serves as a vehicle for forming and expressing community priorities related to Climate Change, lasting infrastructure
- The Team advised CRC's outreach approach and informed the survey design



Outreach Methodology:

Surveys & Data Analysis



CCCT Guidance

CCCT and community helped design survey questions

City Systems to ensure scientific rigor

Door-to-Door Canvassing

As well as tabling events in the community with compensation

Disparities Findings

400 total responses showed stark disparities 2x HS, 3x Asthma

Outreach Methodology:

Multilingual Prioritization Meetings

- 4 Prioritization Meetings, two in English, two in Spanish
- Broke down into small groups and prioritized issues, policies and programs

✱ More than
260
attendees!





Outreach Methodology:

Focus Groups

- Partnered with other CBOs
- One by BHCDF for Black families
- One by El Comite for Spanish Speakers
- One by Community Leaders with a focus on PI residents



More than
120
attendees!





The Most Ambitious and Comprehensive EJ Element in the State!*

- 127 Unique Policies and Programs
- Community led process that has built the organizational infrastructure necessary to create favorable political conditions
- Multiracial coalition with strong allies throughout the city
- A politically disenfranchised community reasserting its power
- Comprehensive in every respect: language & ability justice, housing & displacement, grounded in community led and multiracial process



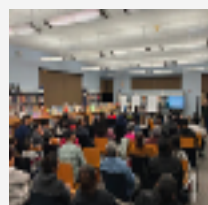
Key community-identified Issues:

Air Quality, Traffic, & Pollution

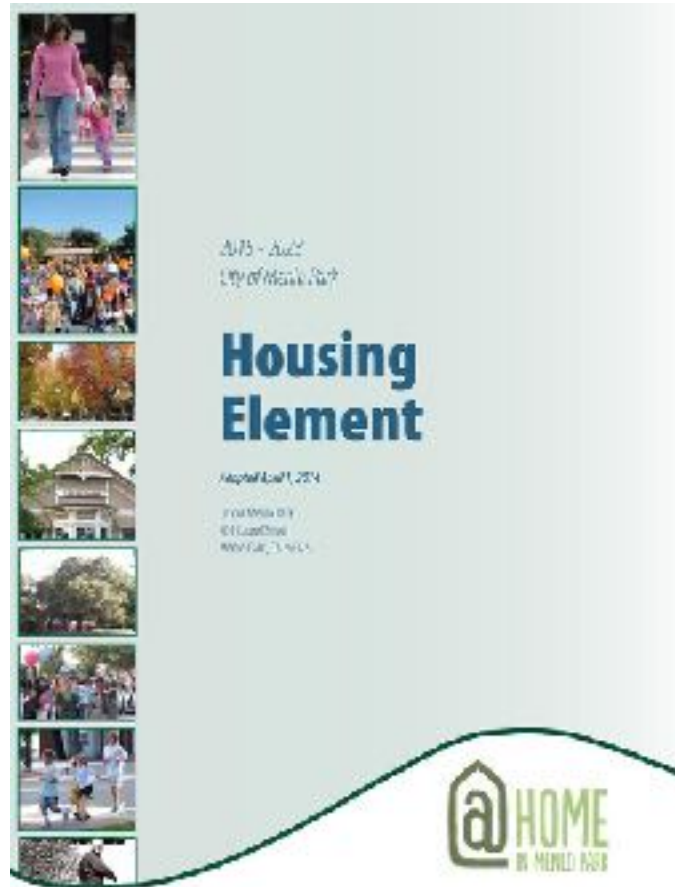
Key General Plan Approaches	Examples of Relevant General Plan Actions
Prioritize	<ul style="list-style-type: none">• Prioritize programs that reduce pollution in underserved communities• Focus street tree planting efforts in underserved communities
Fund	<ul style="list-style-type: none">• Seek funding for pollution reduction activities
Implement	<ul style="list-style-type: none">• Implement Climate Action Plan• Implement Transportation Masterplan• Work with other agencies to monitor air quality risks in underserved neighborhoods• Align planning decisions with environmental quality goals

Key community-identified Issues:
Healthy, Stable, and Affordable housing

Key General Plan Approaches	Examples of Relevant General Plan Actions
Prioritize	<ul style="list-style-type: none">• Prioritize housing programs that provide healthy housing in underserved communities
Fund	<ul style="list-style-type: none">• Develop and use a range of state, regional, and local funds to support housing production, preservation, and protection against displacement
Implement	<ul style="list-style-type: none">• Adopt an anti-displacement strategy• Amend zoning ordinance to protect existing housing• Encourage rental housing assistance• Consider city-owned land for housing• Plan for and support affordable housing production throughout the city• Connect low-income households to programs that can prevent displacement



Housing is an Environmental Justice Issue



Menlo Park: 2012-2016

The City of Menlo Park updates its **Housing Element** for the first time since 1992 in response to a lawsuit for failing to zone for new housing.

Although City staff proposes new housing all over the city, residents of west and central Menlo Park **fiercely oppose** new housing in their neighborhoods.

In the previous General Plan and Downtown Specific Plans, Menlo Park zones for **4,500 new housing units in Belle Haven/Bayside** and only **680 housing units Downtown**.





Intersection of Housing & Environmental Justice

13





Housing is Environmental Justice

- Homes are the first line of defense against climate extremes
- Poor housing can affect health
- Displacement is often to places with greater pollution/climate vulnerability
- Displacement hastens climate harms





Housing Victories in EJE (pending council approval)

- 5.A Identify and resolve, to the extent feasible, any potential toxic soil contamination in residential developments
- 5.C Create a central multilingual tenant protection hotline for renters with questions. Conduct proactive outreach and education to inform the community of available housing resources through culturally competent, in-language workshops
- 5. D Identify opportunities to support a Community Land trust or other fiscal vehicle to purchase land to develop for deeply affordable housing
- 5.F Promote funds and subsidies that minimize the passing through of any upfront investment costs of building electrification on to tenants.
- 5.G Ensure that City's Anti-Displacement Strategy (Housing Element Program H2.E) supports households in Underserved Communities. This could include strategies such as a rental inventory, updated rent control laws, and/or rent increase prohibition.
- 7.J.3 Support increasing access to legal counsel for tenants facing eviction. Conduct community outreach, education, an engagement to ensure renters are aware of this resource. Include progress reports on usage annually.