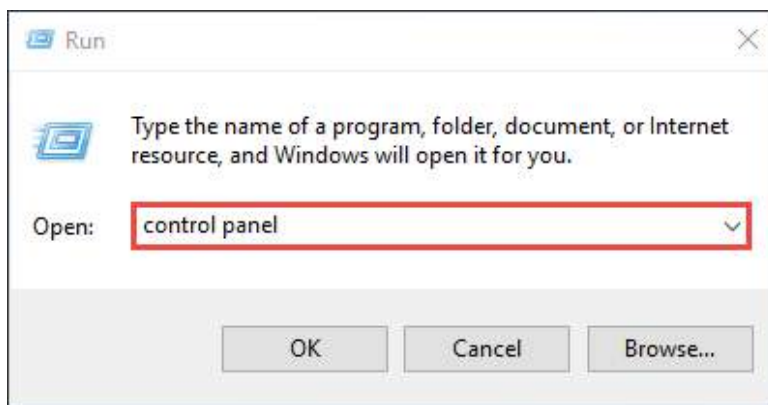


How to find and manually assign an IP address on Windows 10?

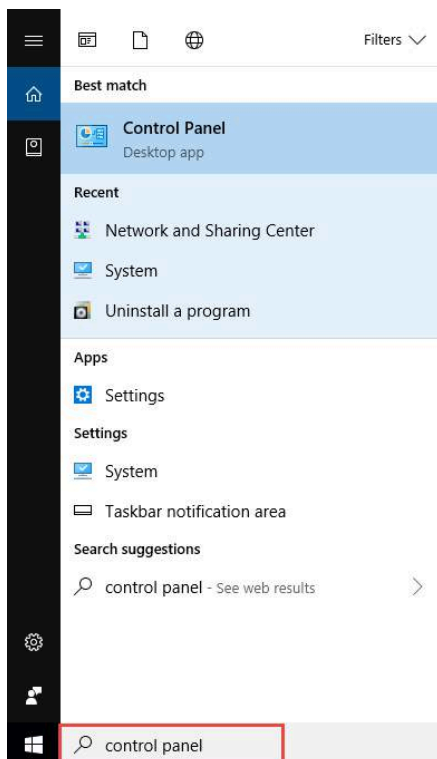
Step 1: Open the Control Panel



Press “**Windows** + **R**”, then a **Run** box comes out. Input **control panel** and press **Enter** to open the control panel.

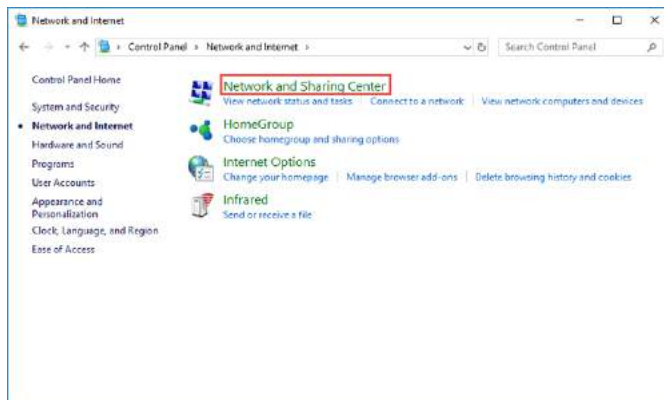
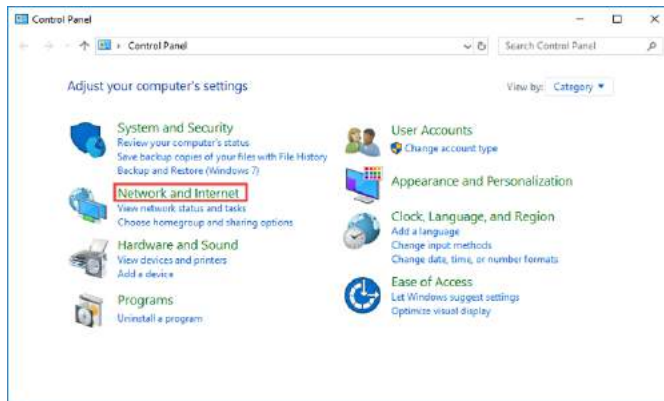


You can also type **control panel** in the search bar at the lower left of the screen and press **Enter** to open the control panel.

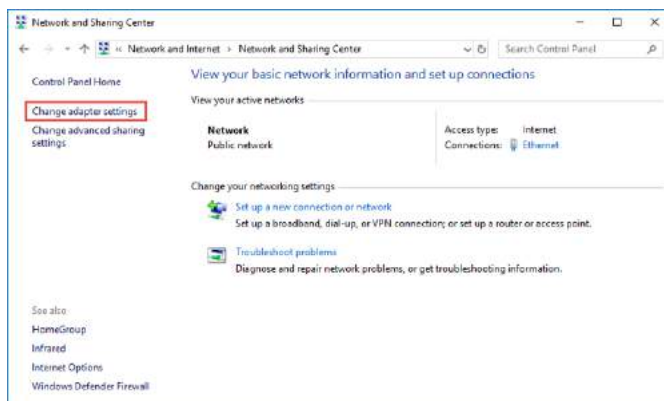


Step 2: Go to Network Connections

Go to **Network and Internet > Network and Sharing Center**.

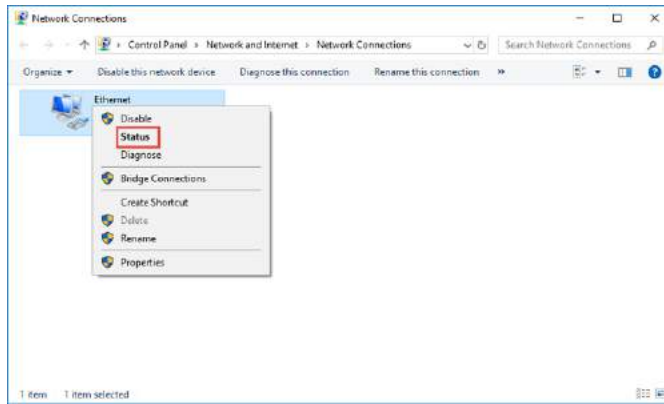


Select **Change adapter settings** on the left.

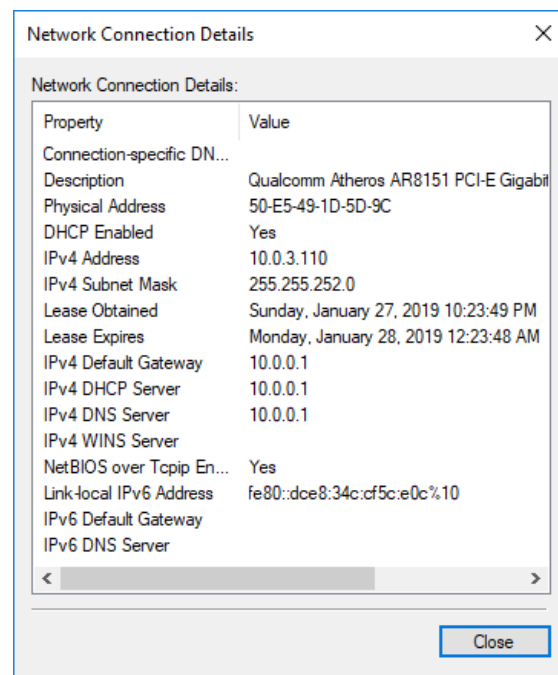
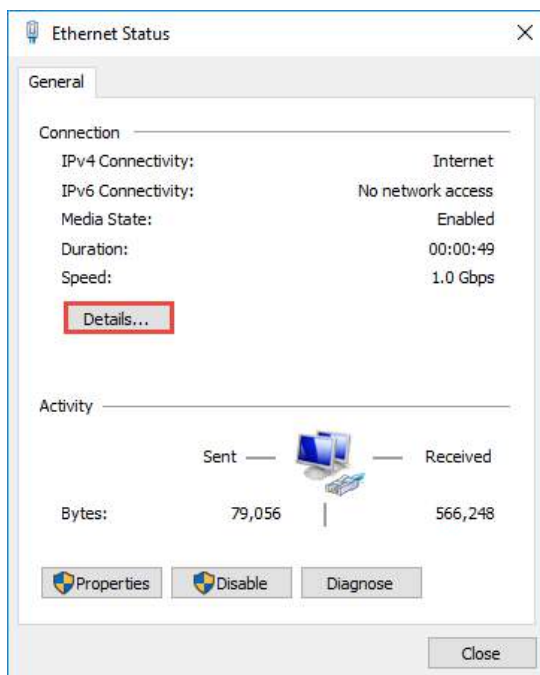


Step 3: Find the IP address

Right click the **Ethernet** icon and select **Status** from the context menu. Then click Details... to view all detailed information of network connection.

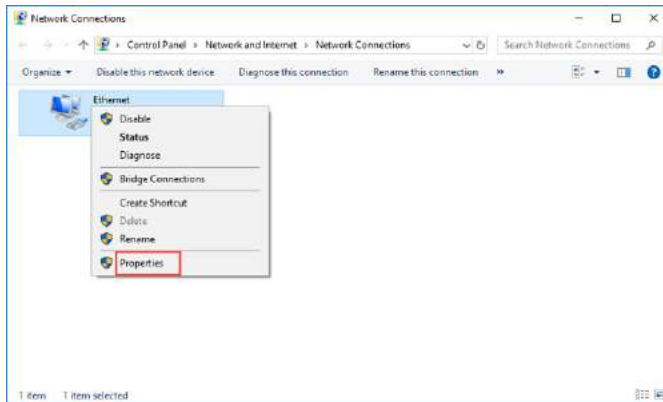


Then click **Details...** to view all detailed information of network connection.

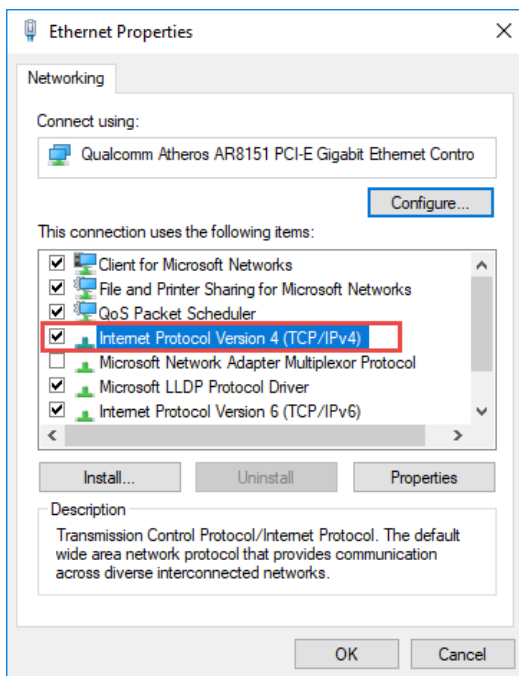


Step 4: Set the IP address

Right Click **Local Area Connection** and select **Properties**.



Then double click **Internet Protocol Version 4 (TCP/IPv4)**.



Select **Use the Following IP address:** and type in the **IP address**, **Subnet mask** and **Default gateway**. Click **OK** to apply the settings.

Internet Protocol Version 4 (TCP/IPv4) Properties

General

You can get IP settings assigned automatically if your network supports this capability. Otherwise, you need to ask your network administrator for the appropriate IP settings.

Obtain an IP address automatically

Use the following IP address:

IP address: 192 . 168 . 0 . 10

Subnet mask: 255 . 255 . 255 . 0

Default gateway: 192 . 168 . 0 . 254

Obtain DNS server address automatically

Use the following DNS server addresses:

Preferred DNS server: . . .

Alternate DNS server: . . .

Validate settings upon exit

Advanced...

OK Cancel