



Ballantyne Breakfast Club

Ballantyne Community Conversations Meeting

Topics include

**Community Health
&
School Overcrowding**

April 10, 2019



SOUTH CHARLOTTE
PARTNERS

www.southcltpartners.org



Atrium Health

A Conversation on Community Health Concerns

Selected Public Health Issues

Presented to the: Ballantyne
Breakfast Club

Date: **April 10, 2019**

SPEAKER: GIBBIE HARRIS

HEALTH DIRECTOR

MECKLENBURG COUNTY PUBLIC HEALTH



Health and Socioeconomic Indicators for District 6

Data from the Charlotte-Mecklenburg Quality of Life Explorer Report



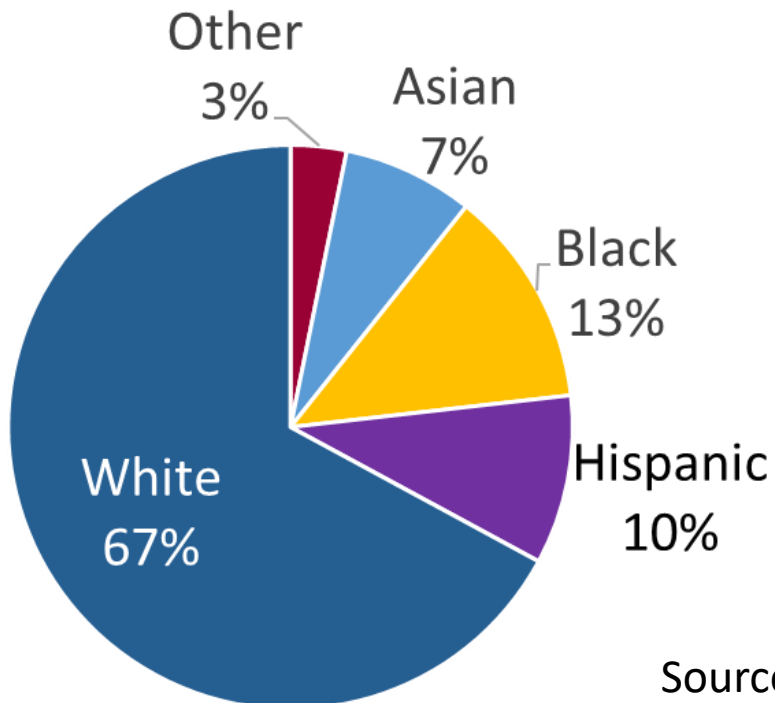
DEMOGRAPHIC OVERVIEW

Median Age of Residents: **40 years**

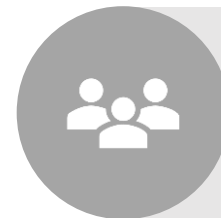
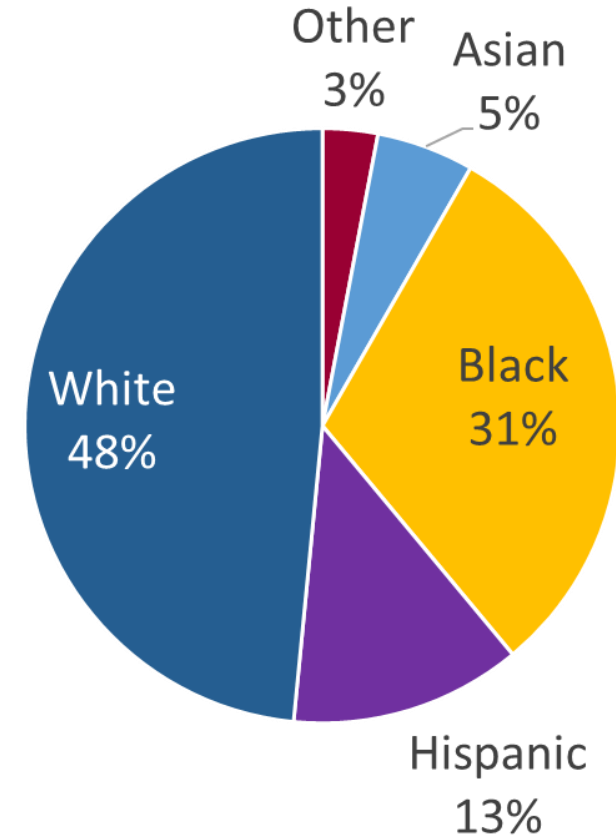
COUNTY COMMISSION DISTRICT 6



2016 Race/Ethnicity Distribution, US Census Data



2016 Race/Ethnicity Distribution, US Census Data



MECKLENBURG COUNTY

Median Age of Residents: **36 years**

Source: U.S. Census Data as presented in the Quality of Life Report
Prepared by: MCHD Epidemiology Program



EDUCATION AND INCOME

COUNTY COMMISSION DISTRICT 6



Median Household Income: **\$85,705**

% of Adults over age of 25 with a Bachelor's degree or higher

52%

Median Household Income: **\$68,986**

43%

% of Adults over age of 25 with a Bachelor's degree or higher






MECKLENBURG COUNTY

Source: U.S. Census Data as presented in the Quality of Life Report
Prepared by: MCHD Epidemiology Program



Maternal and Child Health Indicators




	 Births to Adolescents <i>(% of births to females <19 yrs)</i>	 Low Birthweight <i>(% births weighing less than 5lb 8oz)</i>	 Prenatal Care <i>(% of births where mother received adequate pre-natal care)</i>
MECK.	2.7%	9.4%	63.1%
DISTRICT #6	1%	7.2%	69.9%

Source: NC DHHS, Vital Statistics Data as presented in the Quality of Life Report

Prepared by: MCHD Epidemiology Program



Access to care and other resources

	 Proximity to Low-Cost Health Care <i>(% of housing units within ½ mile of a Medicaid provider or free clinic)</i>	 Proximity to Grocery Store <i>(% housing units within ½ mile of full-service grocery store)</i>	 Proximity to a Pharmacy <i>(% housing units within ½ mile of a pharmacy)</i>
MECK.	20%	30%	30%
DISTRICT #6	19%	30%	32%

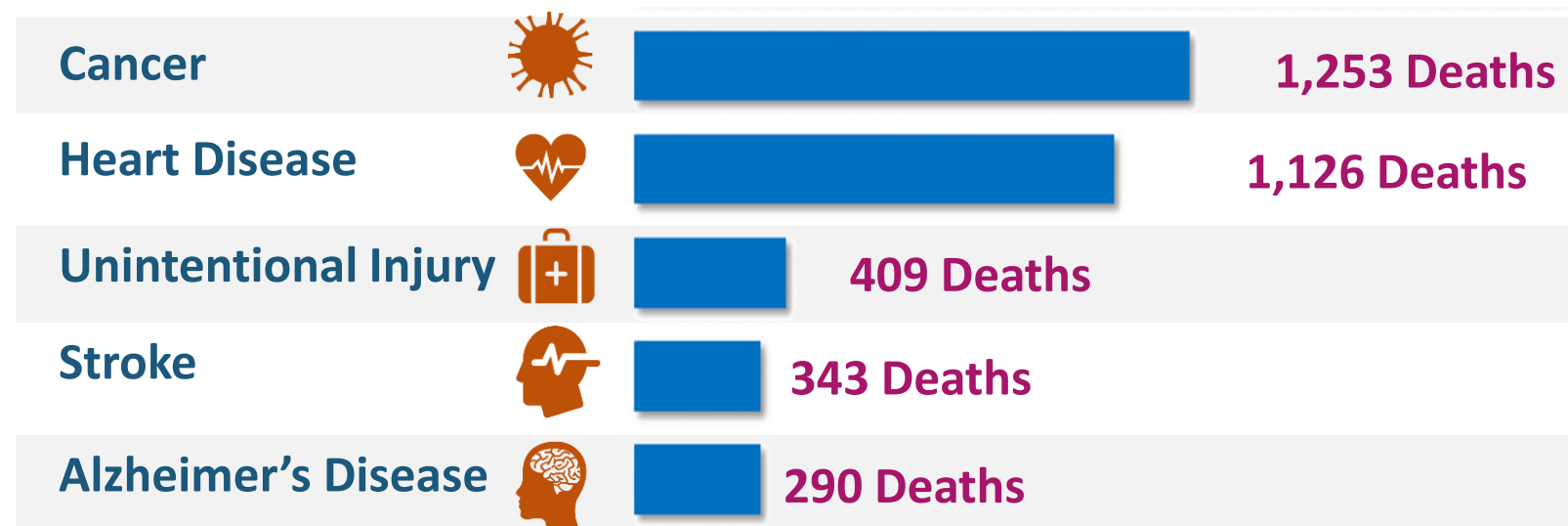
Source: NC DHHS, Vital Statistics Data as presented in the Quality of Life Report
 Prepared by: MCHD Epidemiology Program



NEW & EMERGING ISSUES IN MECKLENBURG



2017 Top 5 Leading Causes of Death, Mecklenburg County



6,161 Deaths
occurred in
Mecklenburg
during 2017

Source: NC DHHS, State Center for Health and Statistics, Mecklenburg County data





Community Health assessment

Leading Priorities

- Mental Health
- Access to Care
- Chronic Disease Prevention
- Violence Prevention



Chronic Disease Prevention

What is the Bottom Line?

7 of the 10 leading causes of death in Mecklenburg are due to chronic diseases



Source: NC DHHS, State Center for Health and Statistics, Mecklenburg County data

1

HEALTHY
EATING

2

ACTIVE
LIVING

3

NOT
SMOKING



Can Prevent or Reduce up to 50% of Premature Death and Disabilities

Cigarette smoking in Teens is declining, however...

In the Nation, cigarette smoking among high school students is at its **lowest rate in 22 years.**



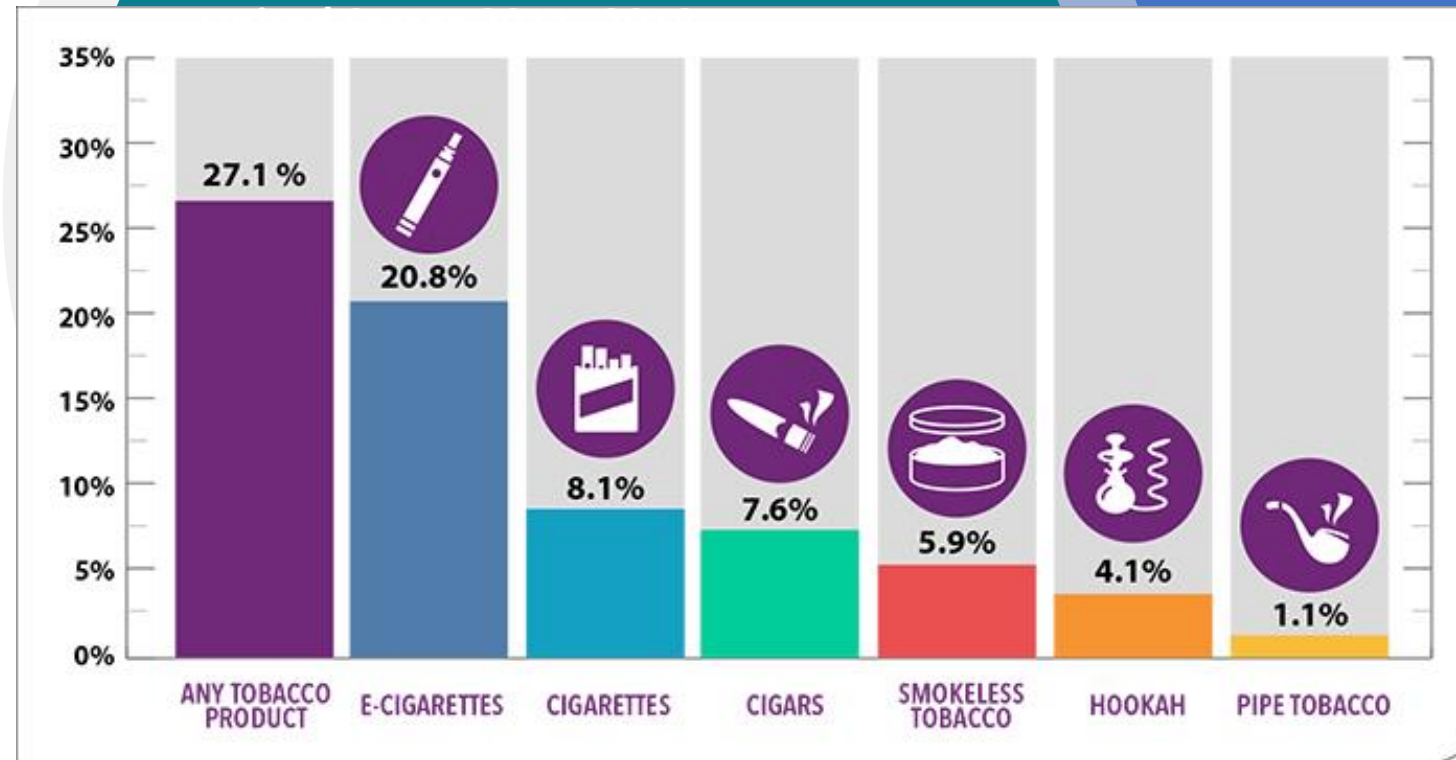
Source: Centers for Disease Control

E-cigarette Use Among Young People Increases

What is the Bottom Line?

E-cigarettes are now
the most
commonly used
tobacco product
among youth.

Tobacco Product Use Among Middle and High School Students—
United States, 2011-2018



E-CIG USE AMONG CHARLOTTE-MECKLENBURG HIGH SCHOOL STUDENTS, 2017 YRBSS



United States



HS students who have ever used E-cigs



North Carolina



North Carolina



Mecklenburg



Mecklenburg

HS students currently using E-cigs





CATCH[®]

MY BREATH

E-CIGARETTE & JUUL PREVENTION PROGRAM



- Work with CMS to integrate a best practice curriculum called “Catch My Breath” into middle and high schools.
- Provide technical assistance to CMS on issues related to Tobacco-Free Schools Policy and education

VIOLENCE PREVENTION/ MENTAL HEALTH

Five-Year SAMHSA Grant



Opioid Use and Opioid Related-Deaths

What is the Bottom Line?

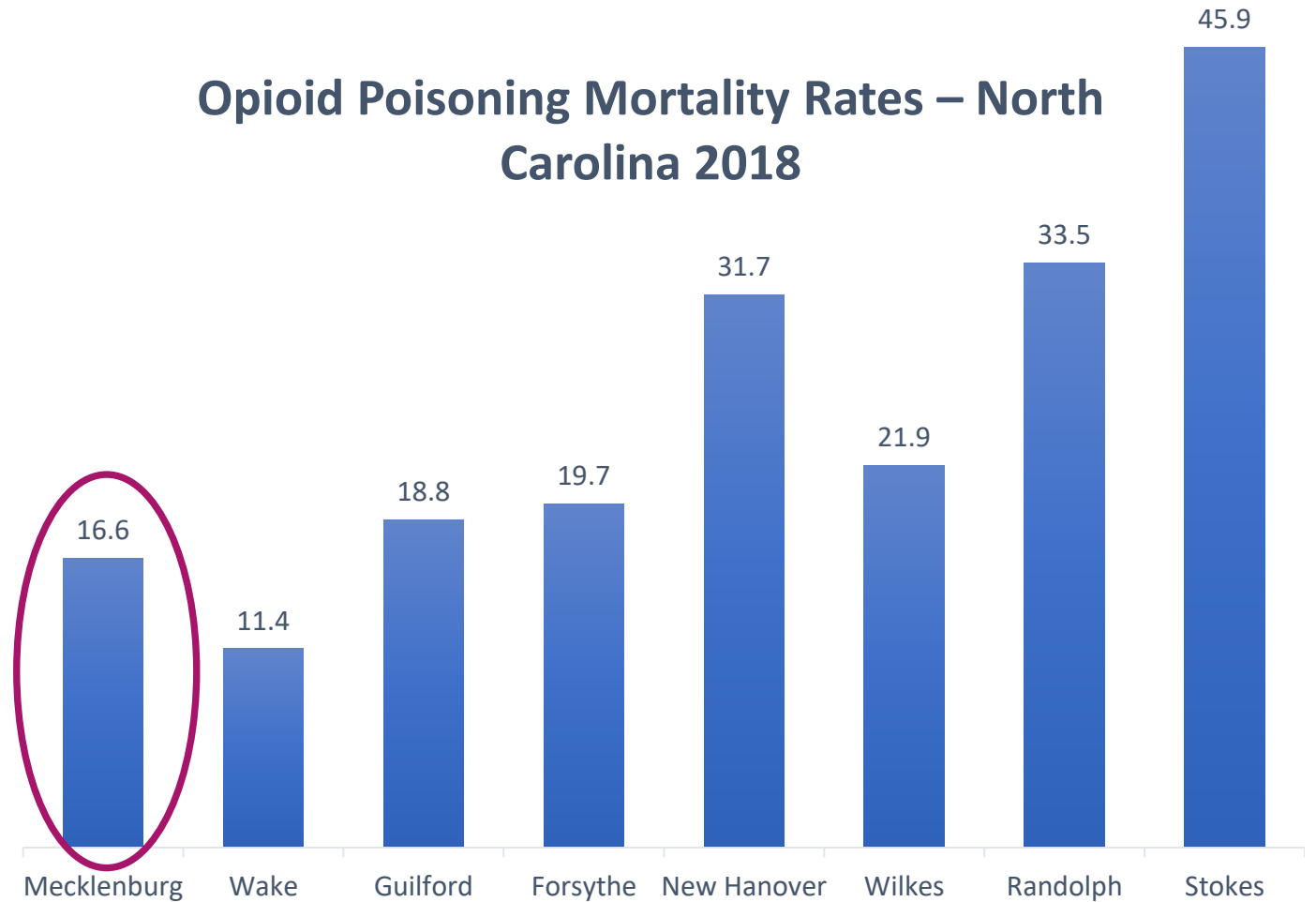
Opioid use and deaths
have INCREASED
across the Nation,
State and County



Opioid poisoning deaths - Mecklenburg

- *290% Increase*
Deaths from opioid poisoning increased from **46** in 2013 to **179** in 2017,
- Largest population, largest number of opioid deaths in the state
- However, the *rate of opioid death is one of the lower in the state*
- Rates much higher in Wilmington area and smaller, rural counties

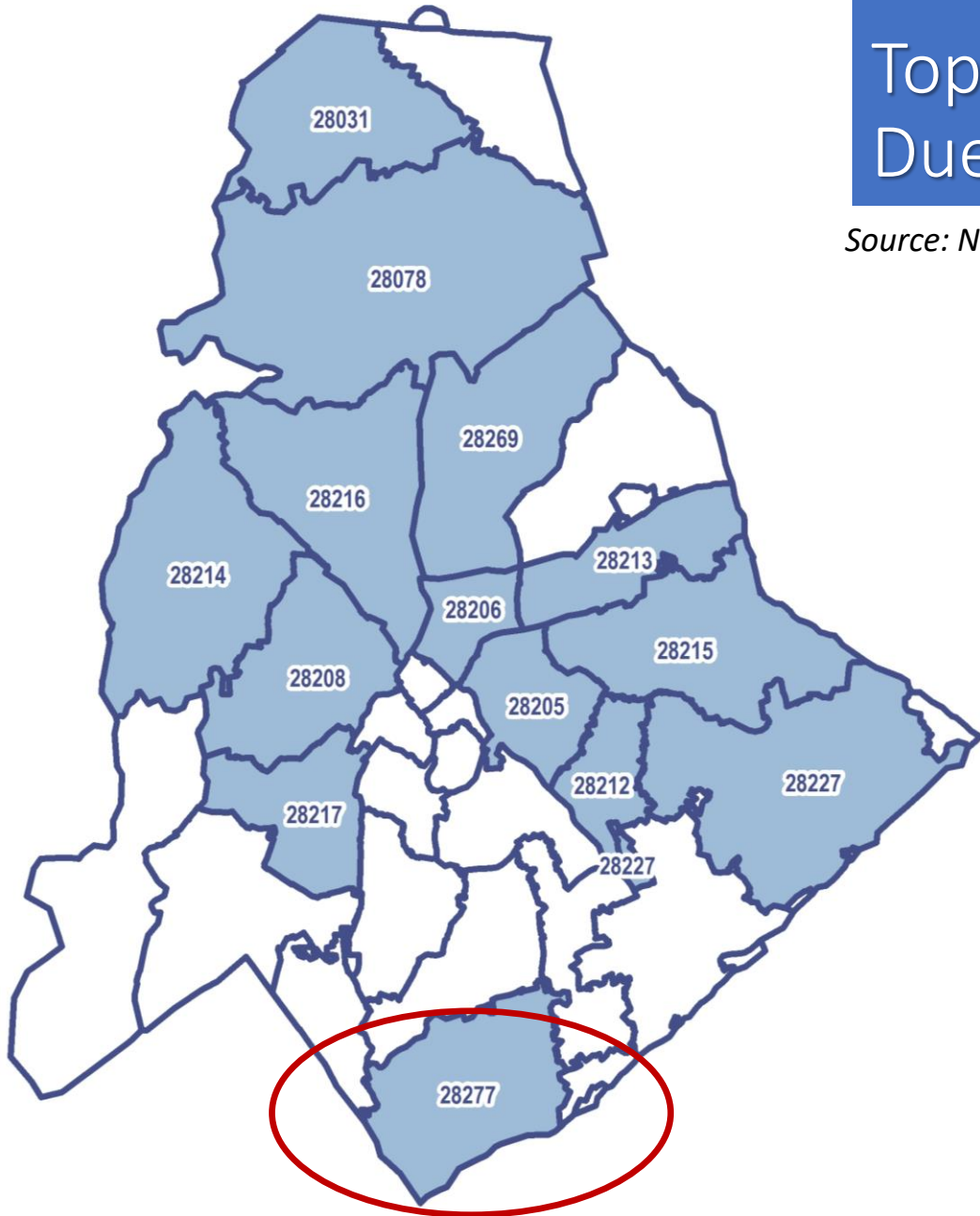
Opioid Poisoning Mortality Rates – North Carolina 2018



Source: NC DPH Injury & Violence Prevention Branch; Prepared by MCHD Epidemiology Program

Top 14 Zip Codes Reporting ER Visits Due to Opioid Overdose, 2018 Data

Source: NC DETECT, Mecklenburg County ED Data, Prepared by MCHD Epi Program, 2019



Top ZIP Codes for ER Visits for Opioid Overdose		
Rank	ZIP	Count
1	28216	42
2	28214	39
3	28205	35
3	28208	35
4	28206	30
5	28217	25
5	28269	25
6	28212	24
7	28215	23
8	28031	22
9	28078	21
10	28213	20
10	28227	20
10	28277	20



Adolescent/Adult Newly Diagnosed HIV Case Reporting, Mecklenburg County

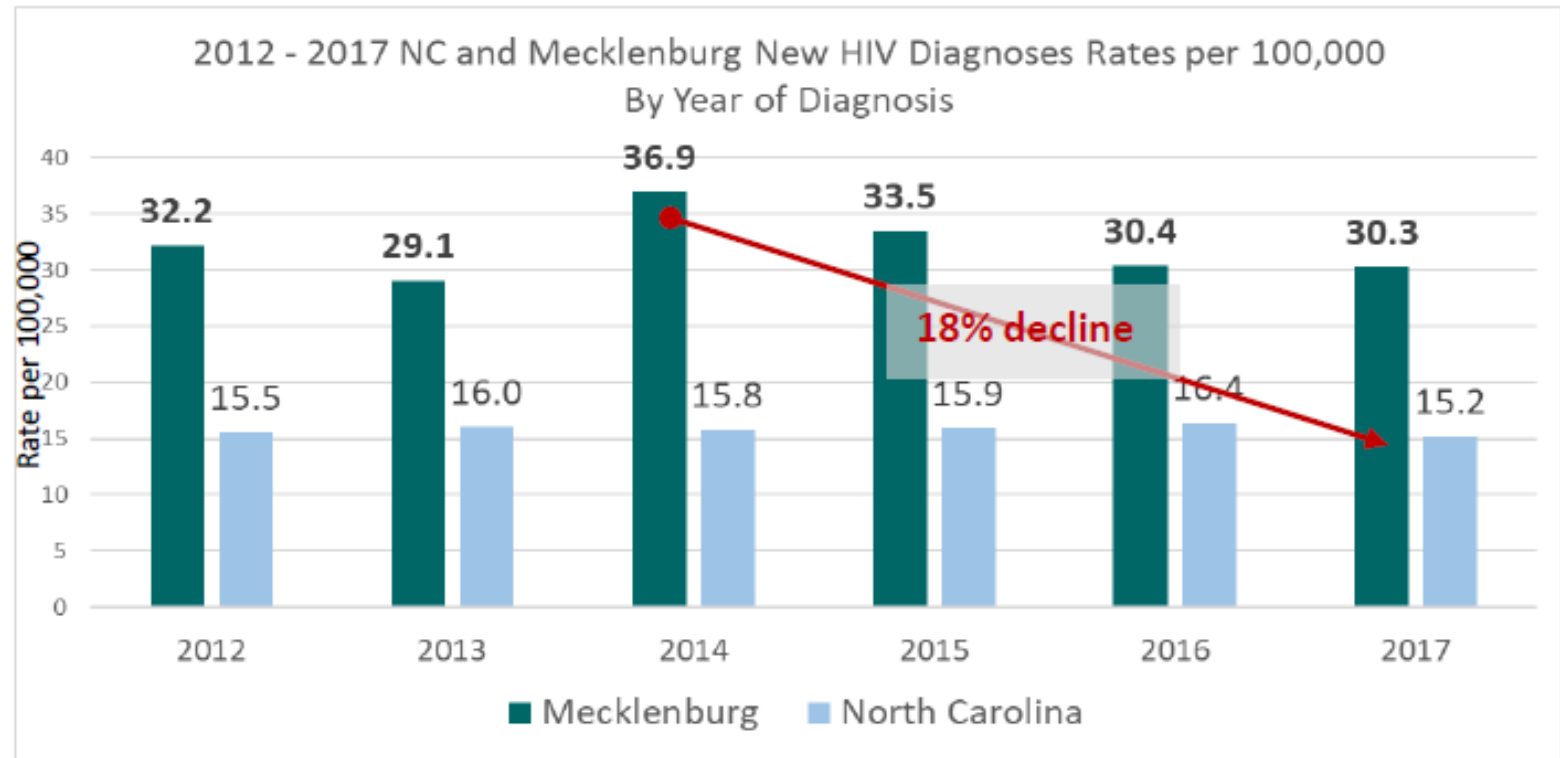


270 new diagnoses
Of HIV Disease in 2017

More than
6,700 persons are
living with HIV in
Mecklenburg

2013 – 2017 Newly Diagnosed HIV Disease Cases

Year:	2013	2014	2015	2016	2017
Cases:	238	307	285	267	270



Source: NC DHHS, HIV/STD Prevention and Care Unit, Mecklenburg County Line Listing
Prepared by: MCHD Epidemiology Program





Getting to Zero Mecklenburg

- Six Community Clinical Partners
- Providing PrEP to un- and underinsured county residents



Hepatitis A Outbreak in Mecklenburg

What is the Bottom Line?

Mecklenburg is part of a widespread outbreak of Hepatitis A affecting multiple states and counties across the Nation.

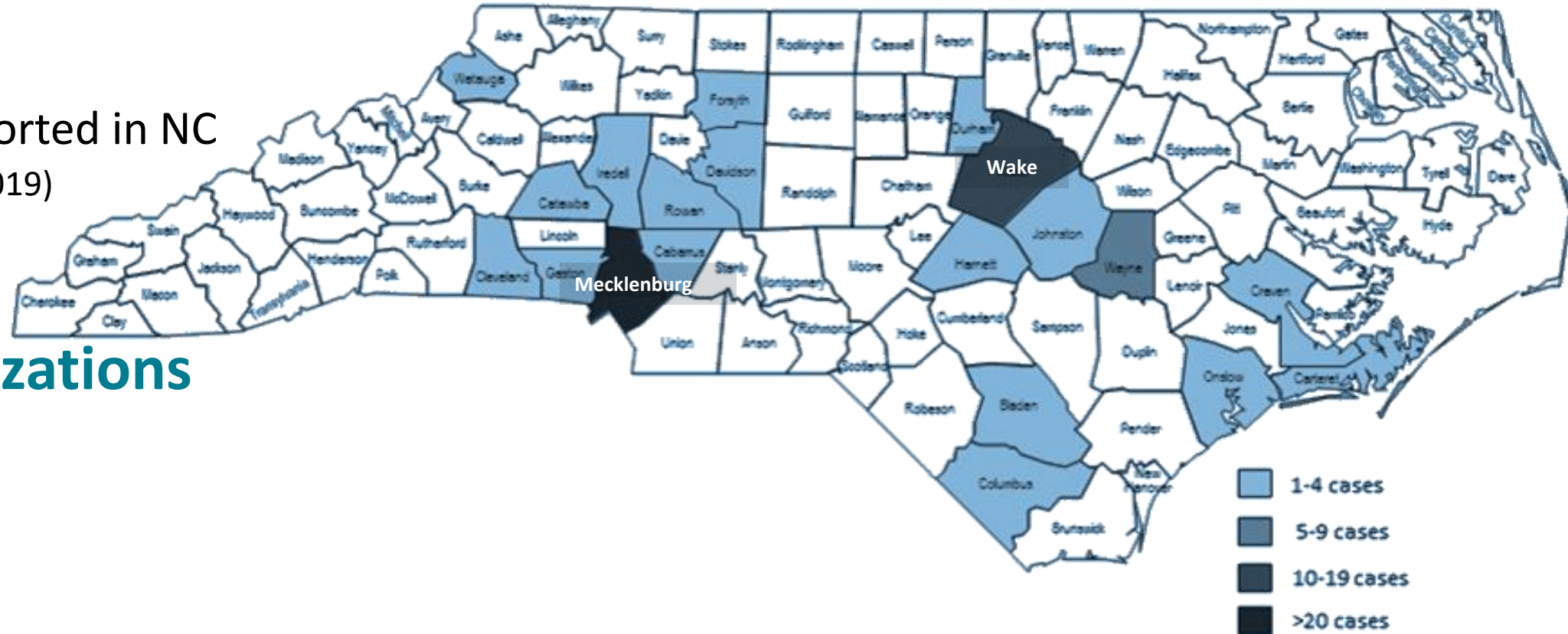


Source: Centers for Disease Control

Since the start of NC Outbreak:

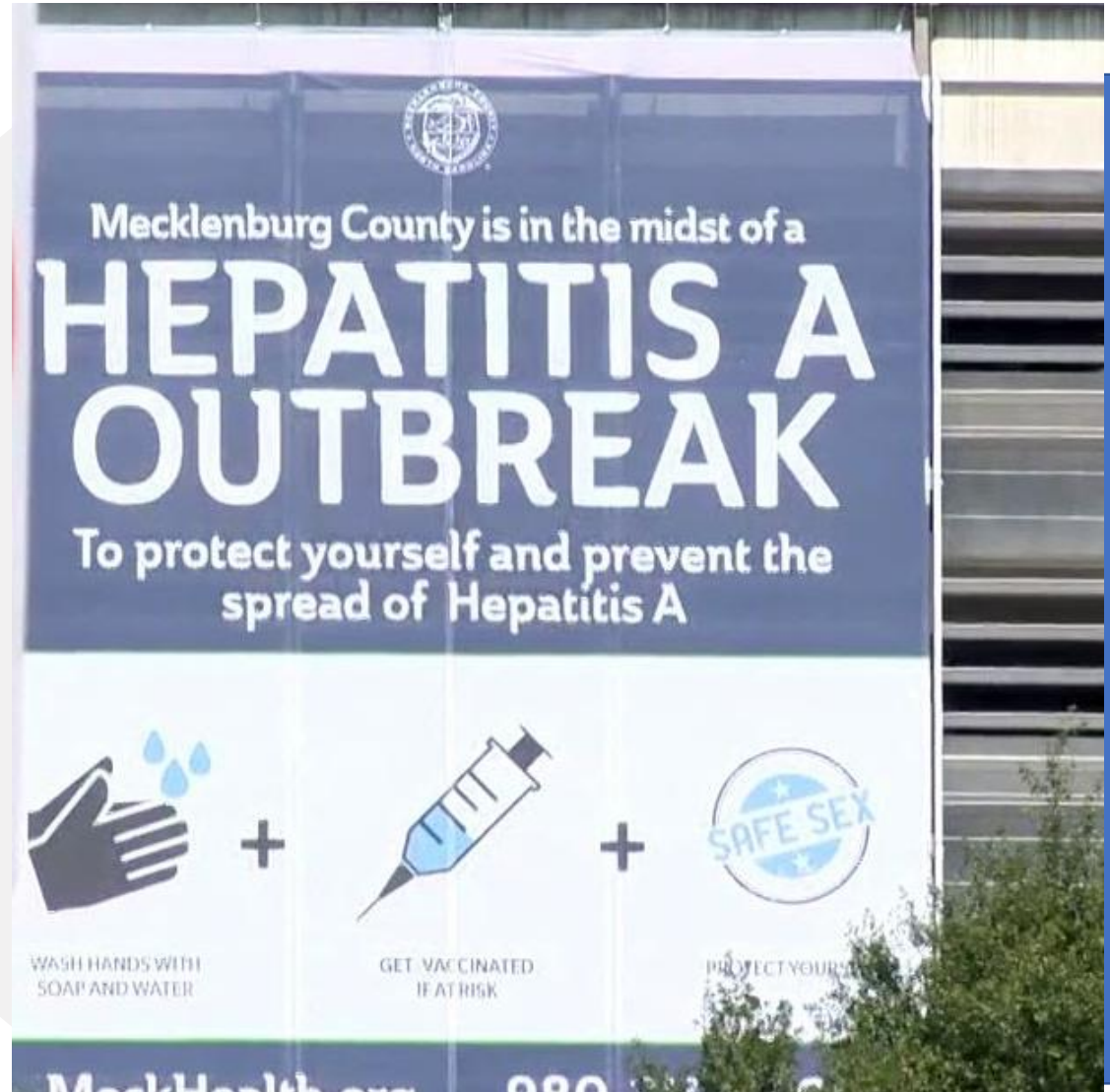
North Carolina Hepatitis A Outbreak-associated Cases, By County Time Period: January 1, 2018 – March 25, 2019

- **74 cases** reported in NC (Jan 2018 – March 2019)
- **54 hospitalizations** (73%)
- **1 death**



HEPATITIS A RESPONSE

- Vaccinated almost 2400 residents exposed to infected food handlers in mass clinics
- Community partners help get the word out to high risk individuals
- Delivered 666 immunizations via community clinics





THANK YOU



2018 MECKLENBURG CHA ONLINE AT
WWW.MECKHEALTH.ORG/CHA



Ballantyne Breakfast Club

Ballantyne Community Conversations Meeting

Topics include

**Community Health
&
School Overcrowding**

April 10, 2019



SOUTH CHARLOTTE
PARTNERS

www.southcltpartners.org



Atrium Health



Atrium Health

South Charlotte Partners



OUR MISSION:

To *improve* **Health**,
elevate **Hope** and
advance **Healing** – *for all*

Commitment to South Charlotte/Ballantyne

- **Community Partnerships**

- South Charlotte Partners
- Northwood Office
- Charlotte Regional Alliance – South and Ballantyne Board
- YMCA – Sara's, Morrison
- Ardrey Kell High School, Charlotte Catholic
- Isabella Santos Foundation

- **Outpatient Services**

- 27 Medical Practices from the Arboretum to Ballantyne to Pineville to Rock Hill
 - Women's Health, Pediatrics, Family Medicine, Orthopedics, Sports Medicine, Medical Oncology
- 5 Urgent Cares with pediatric urgent care in Blakeney
- Outpatient Imaging
- Outpatient Endoscopy
- Physical and Occupational Therapy

Atrium Health Pineville

LEAPFROG: Grade A (5 out of last 8 Semesters)

TRUVEN Top 100 Hospitals: 2013-2016

HEALTHGRADES Top 100 Hospital 2019

IBM WATSON Top 50 Cardiovascular Hospitals 2018

Serving a Population of 700,000+

45% of Patients are from South Carolina

#1 Highest Growth Subregion

17,605 Admissions,

2,286 Deliveries

9,862 Surgeries,

95,799 ED Visits

250 Licensed Beds / 10 Operating Rooms / 2 ERs

75th or Higher Percentile Teammate Engagement 10 Out of Last 13 years

75th or Higher Percentile Physician Engagement 10 Out of 11 Last Surveys

1,700 Dedicated Teammates

300+ Skilled Physicians

430+ Volunteers

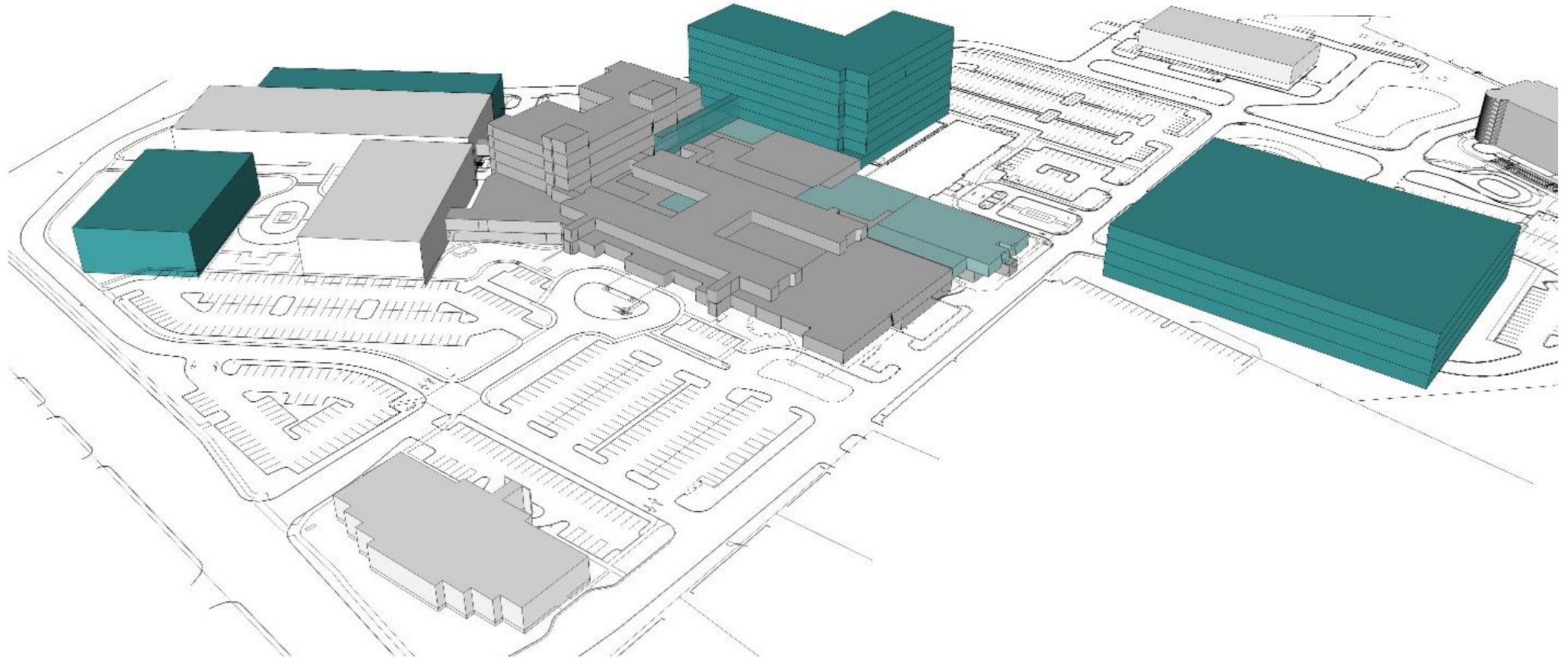
South Charlotte Future Outpatient Services

- **Pineville Medical Plaza II May 2019**
 - Expansion of Levine Cancer Institute
 - Advancing medical and radiation oncology
 - Research, Support and Integrative Services
 - Maternal Fetal Medicine
 - Neurology
 - Epilepsy
- **Rea Village 2020**
 - Medical Practices:
 - Orthopedics
 - Gastroenterology
 - Dermatology
 - Family Medicine
 - Pediatrics
 - Ob/Gyn
 - Free Standing Emergency Department

South Charlotte Future Acute Care

- **Atrium Health Pineville- Acute Care Hospital Services**
 - 2nd MRI 2019
 - 12 Bed Observation Unit 2019
 - Epilepsy Monitoring Unit 2019
 - Maternal Fetal Medicine 2019
 - Additional Operating Room 2020
 - Robotic Surgery
 - 8 Story Patient Tower 2021

Campus Master Planning



New Tower





Ballantyne Breakfast Club

Ballantyne Community Conversations Meeting

Topics include

**Community Health
&
School Overcrowding**

April 10, 2019



SOUTH CHARLOTTE
PARTNERS

www.southcltpartners.org



Atrium Health



Making healthcare remarkable

Mission

Novant Health exists to improve the health of communities, one person at a time.

Vision

We, the Novant Health team, will deliver the most remarkable patient experience in every dimension, every time.

Safety • Quality

Authentic personalized relationships

Voice & choice • Easy for me

Affordability

Values

Diversity and Inclusion

Teamwork

Personal excellence

Courage

Compassion

Our people

We are an inclusive team of purpose-driven people inspired and united by our passion to care for each other, our patients and our communities.

Our promise

We are making your healthcare experience remarkable. We will bring you world-class clinicians, care and technology – when and where you need them. We are reinventing the healthcare experience to be simpler, more convenient and more affordable, so that you can focus on getting better and staying healthy.

Our people philosophy

At Novant Health, people are our business. We treat each other with respect and compassion. We embrace the differences in our strengths while fostering an environment of inclusion, empowerment, inspiration and courage.

We always remember, our business is the care of all people, starting with our team members.



Novant Health Hospital in Ballantyne (CON approved)

- 161,988 SF
- 36 licensed acute care beds
- Emergency room – 15 beds
- 2 Surgery rooms
- 1 C-Section room
- 1 Gastroenterology suite

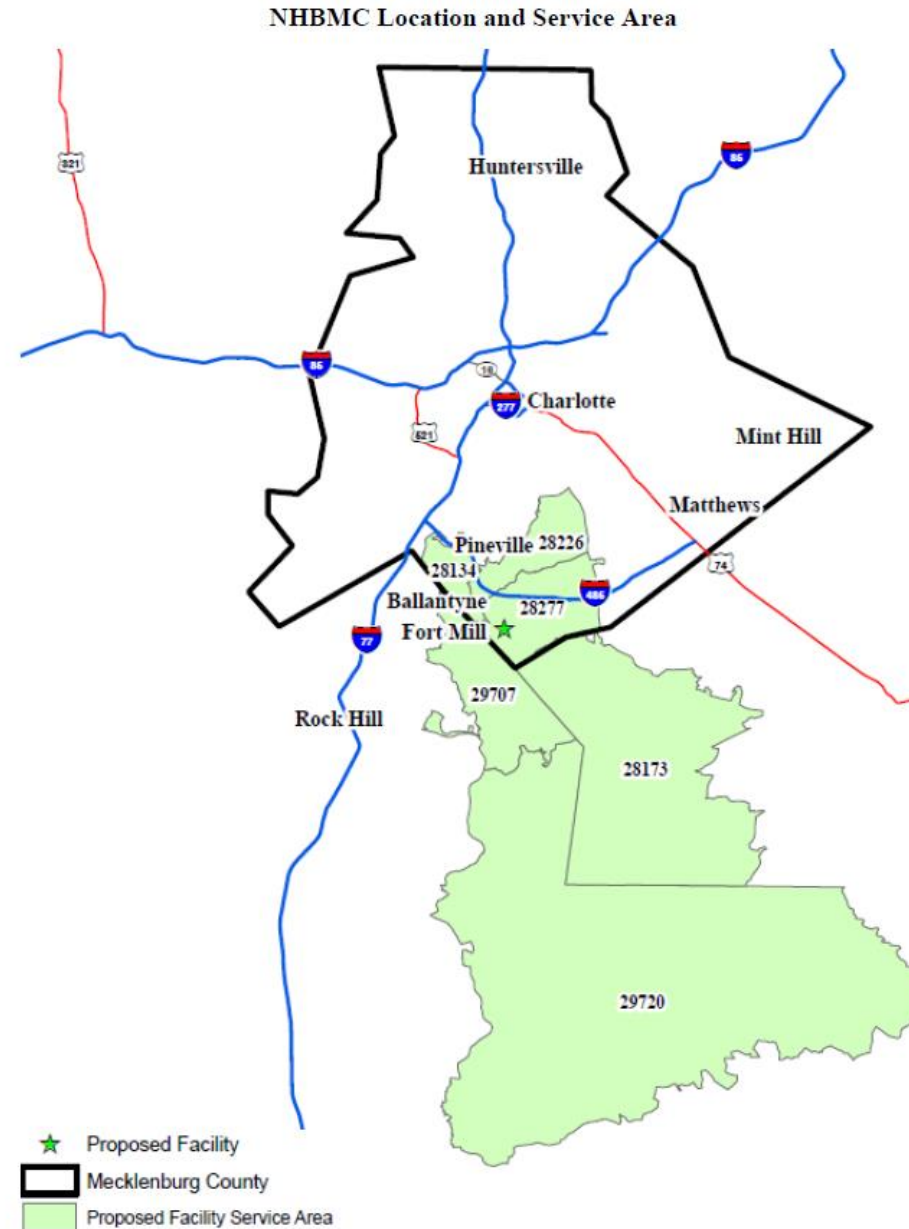
Project cost:

- \$154,388,021

Novant Health Hospital in Ballantyne (CON approved)

Zip Code Service Area:

- 28226
- 28134
- 28277
- 29707
- 28173
- 29720



Novant Health Hospital in Ballantyne (CON approved)

Reasons for building hospital:

- Increase choice and competition for acute care services in southern Mecklenburg County
- Improve geographic access to care for Ballantyne service area residents
- Better utilize Novant's existing acute care beds and operating rooms
- Enable Novant Health to better compete with the larger and dominant Atrium system



Questions/Comments



Ballantyne Breakfast Club

Ballantyne Community Conversations Meeting

Topics include

**Community Health
&
School Overcrowding**

April 10, 2019



SOUTH CHARLOTTE
PARTNERS

www.southcltpartners.org



Atrium Health

CHMS Overcrowding Effects

- Social, Emotional and Mental Health
 - Hallways
 - Nurse visits
 - Bathrooms
 - Classrooms – focus issue
 - Athletic teams
- Safety
 - Cafeteria
 - Too many people in a small space
 - Bus lot
- General Well Being of Staff
 - Work harder to compensate for # of kids and lack of space
 - Elective teachers without classrooms
 - Not enough office space for staff
- School/Facility Maintenance



Isabel stood in the middle of the hallway during a class change to show how tight it was

2018-19 School Utilization Information - Ballantyne Subset

School	Student overview						Teacher overview				Facility overview	
	20th Day Enrollment to Planned Enrollment Ratio	Rank	Class size vs Average class size (Classroom only)	Rank	Class size vs Average class size (Classroom + Mobile + Accessory)	Rank	Classroom Utilization (Classroom Teachers/ Bldg Classrooms)	Rank	Classroom Utilization (Classroom Teachers/Bldg Classrooms + Mobile Units + Accessory Buildings)	Rank	Cafeteria Utilization	Rank
Ardrey Kell	173%	1	161%	1	146%	1	160%	2	130%	2	152%	3
Community House	164%	1	162%	1	132%	2	155%	1	118%	4	153%	2
Jay M Robinson	116%	8	114%	8	122%	5	119%	10	119%	3	95%	9
Elon Park	139%	5	152%	5	134%	6	137%	10	99%	21	176%	3
Hawk Ridge	129%	7	141%	7	130%	13	132%	13	100%	18	78%	46
Polo Ridge	125%	11	137%	11	133%	8	128%	17	102%	14	152%	5
Ballantyne	113%	15	124%	15	134%	7	108%	48	95%	33	90%	36
Endhaven	102%	29	112%	29	126%	17	114%	39	105%	8	109%	19
Average - HS	107%		98%		98%		116%		103%		110%	
Average - MS	101%		100%		99%		108%		101%		82%	
Average - ES	91%		100%		100%		107%		88%		77%	

Definitions

20th day enrollment - directly from data supplied

Class size - 20th day enrollment / Building classrooms

Average Class size - Used the class size of all like type schools (ES, MS and HS) and computing average

Classroom utilization - directly from data supplied

Cafeteria utilization - 12 ft² / Actual cafeteria ft²s per student

Notes

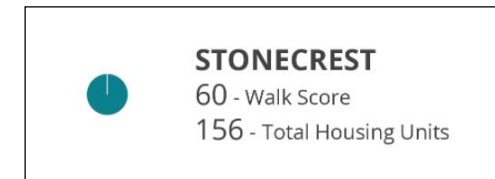
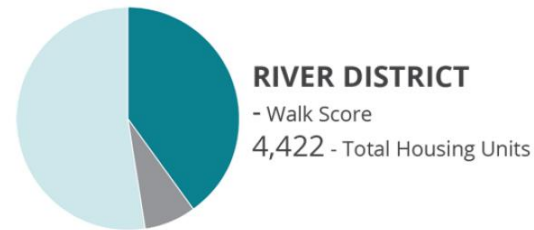
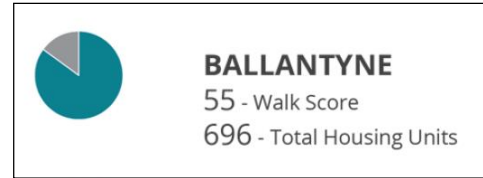
ES ranking is out of 100, highest to lowest

MS ranking is out of 29, highest to lowest

HS ranking is out of 21, highest to lowest

Schools with categories other than ES, MS and HS were not included in analysis

Residential Projected Growth (units) South & Southwest Activity Centers (2016 – 2045)



**** Over 2000 new housing units will be built in our area**

Source: Charlotte Future 2040 Comprehensive Plan presented by Taiwo Jaiyeoba, Charlotte Planning Director

Potential Overcrowding Solutions for CHMS

Short term solutions

- A. Residency affidavit for transition years (6th/9th) for top 5 overcrowded middle/high schools
- B. Add a facilitator
- C. Increase # of administrators and office space
- D. Increase # of teachers and space for them to teach
- E. Increase # of counselors, SRO's, Nurses and office space for each of them
- F. Limited redistricting
- G. Increase # of mobile units or modular building connected to the school
- H. Have K-8 STEAM take many "seats" from JM Robinson and then move CHMS kids to JM

Long term solutions

1. Move a grade into another building
2. Add onto cafeteria and gym
3. Move 5th and 6th grades in all Ballantyne subset schools to a new school
4. Build a 4-6 on the newly purchased land across from AK. Make Elon a K-3. Make CHMS a 7-8.
5. Build a new middle school and an elementary school on the newly purchased land across AK
6. Build a new school on a new plot of land owned by the county (e.g. behind CHMS, South of Southampton off of Marvin Road, around Elon Park Recreation)

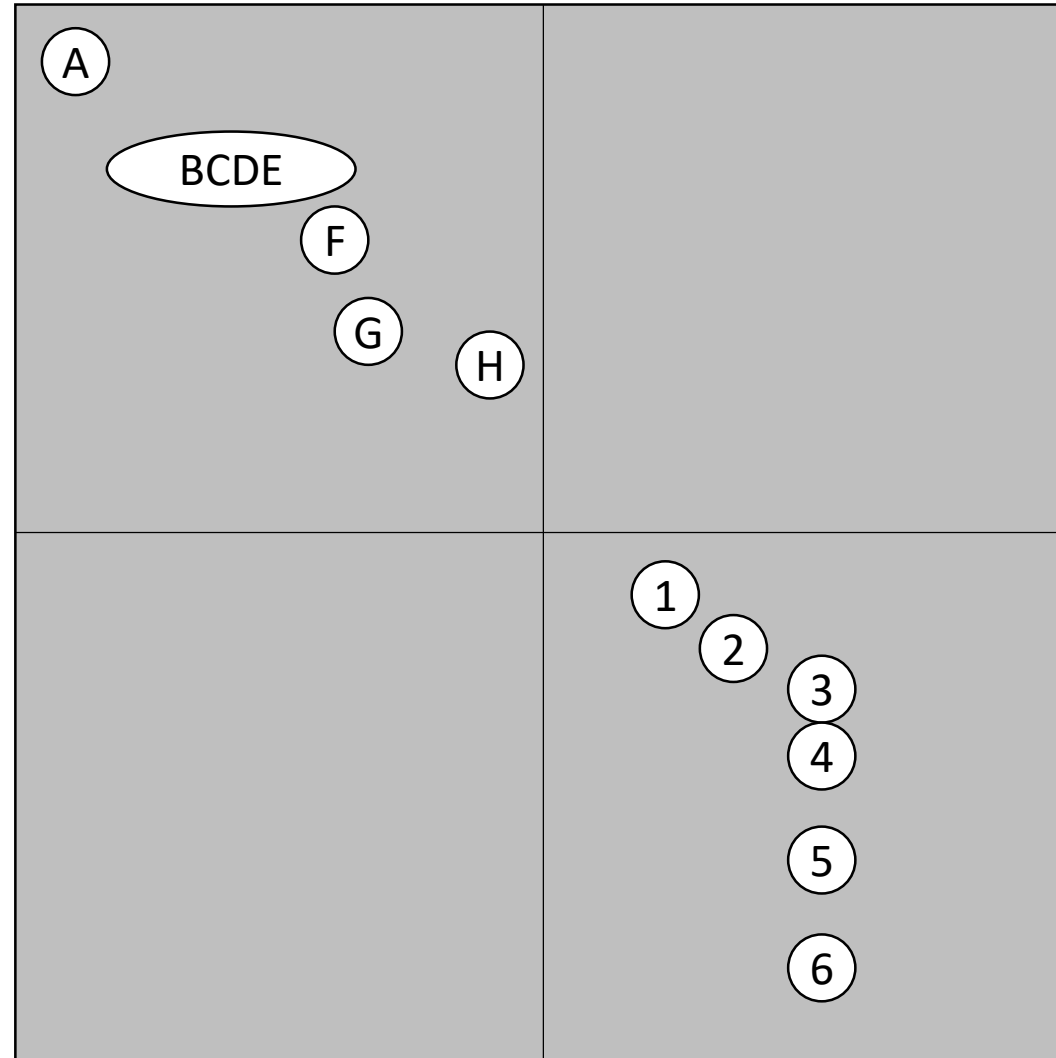
Resources

LOW
HIGH



Within calendar year < 12 months

>12 months



Link to CMS Slides Can be Viewed Here:

<http://www.cms.k12.nc.us/mediaroom/Documents/CMS%20Ballantyne%20Breakfast%20Club.pdf>



Ballantyne Breakfast Club

Ballantyne Community Conversations Meeting

Topics include

**Community Health
&
School Overcrowding**

April 10, 2019



SOUTH CHARLOTTE
PARTNERS

www.southcltpartners.org



Atrium Health