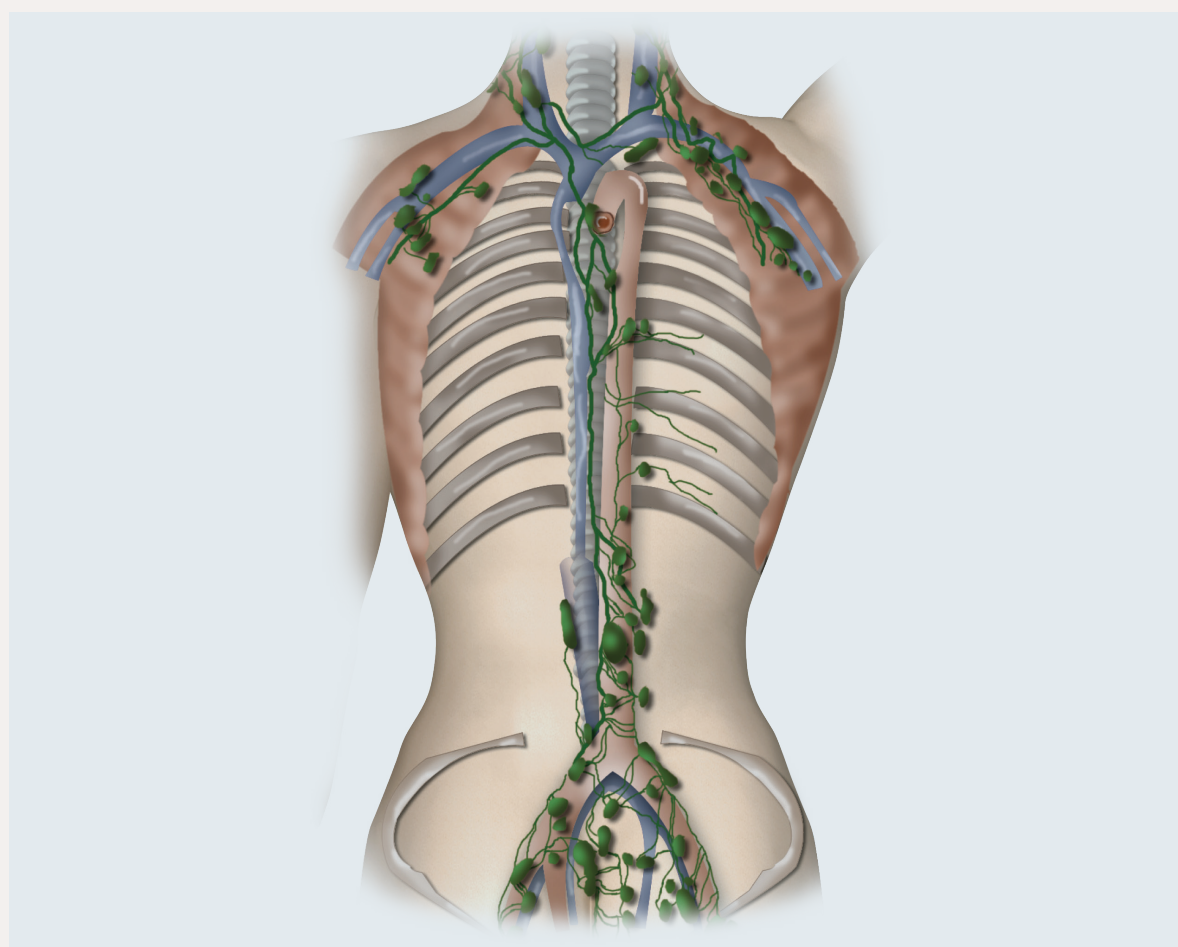
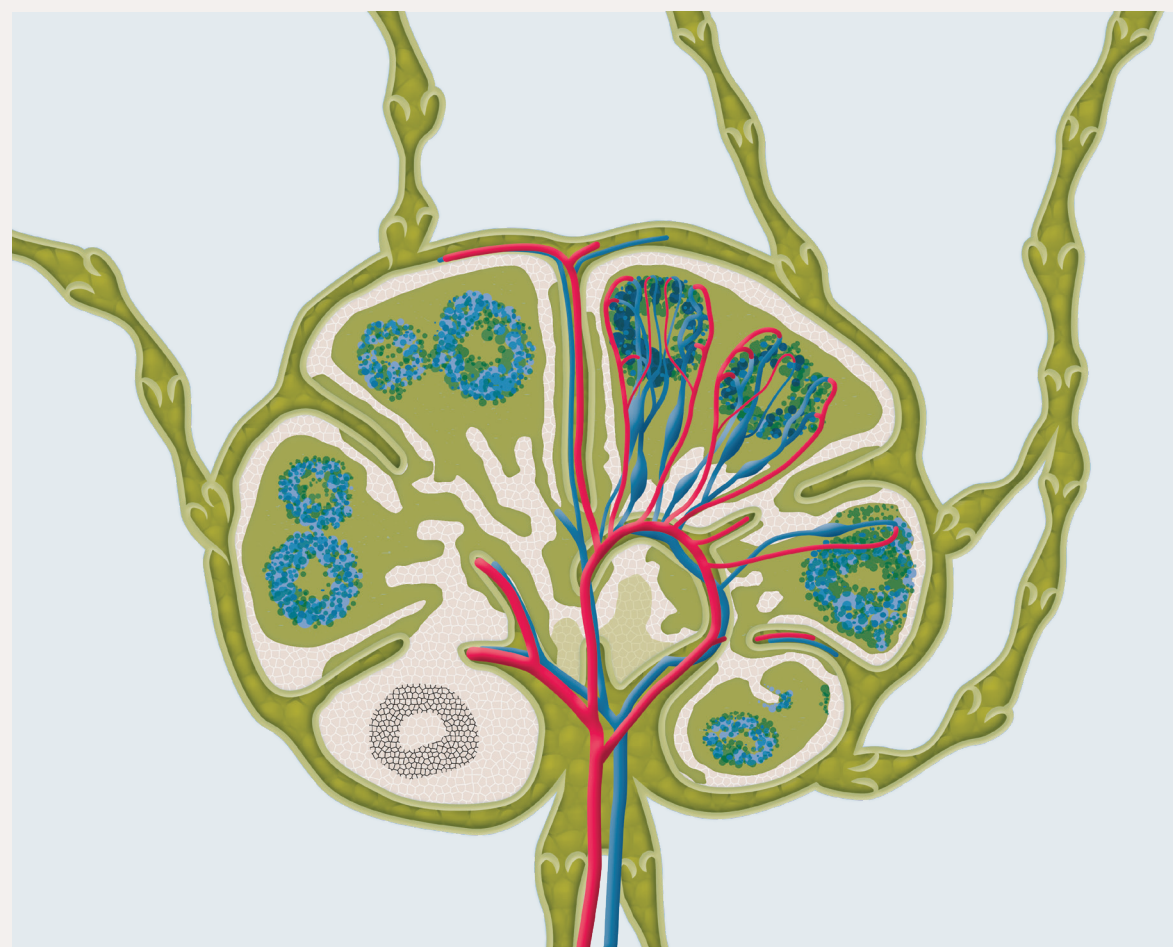


The lymphatic system



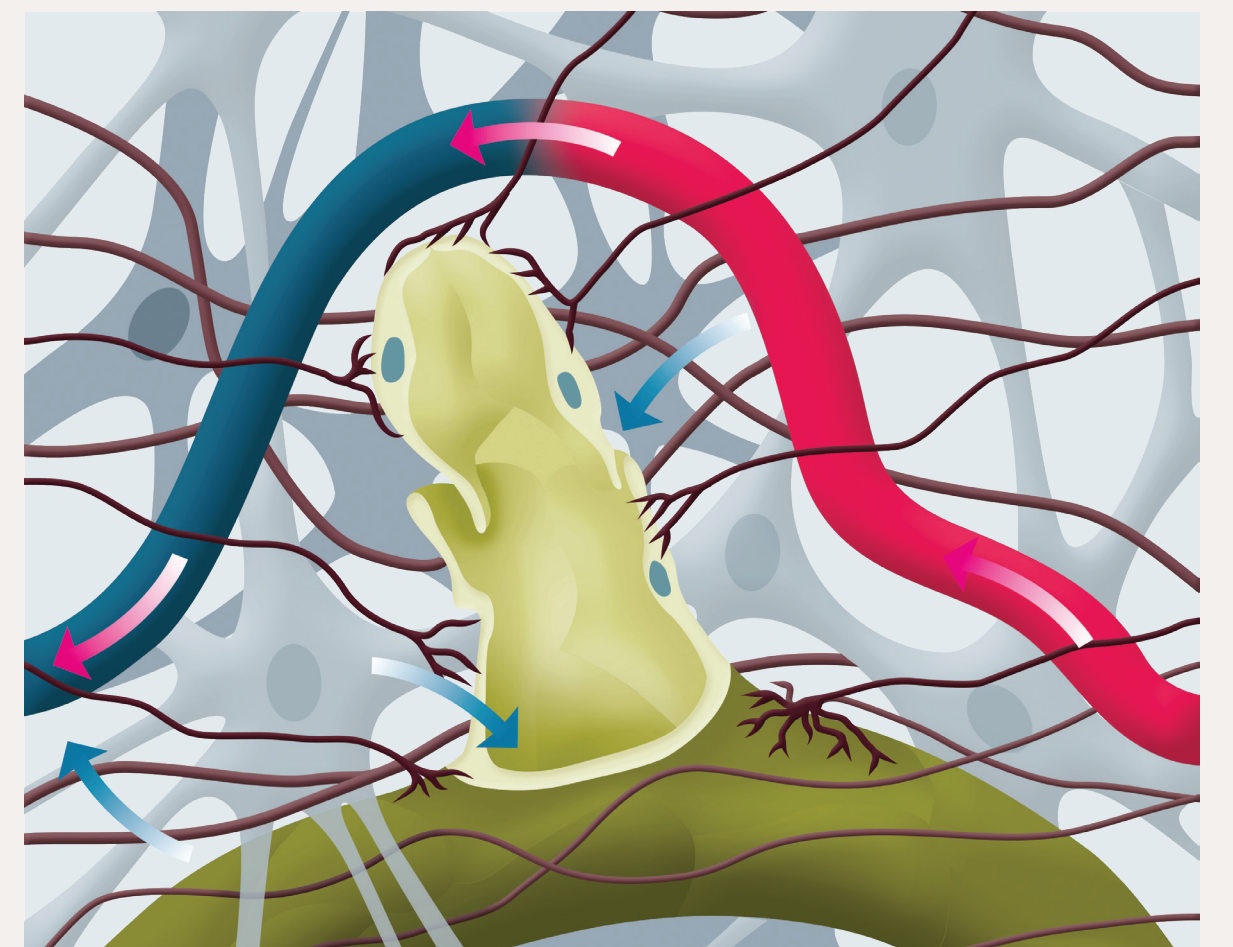
Back interior view

The lymph channels return lymph into the bloodstream close to the heart.



Lymph nodes

Lymph nodes can be found in various sizes and numbers in most parts of the body. Their filtering properties allow the capture of harmful substances. Lymphocytes are produced in the lymph nodes. These are counted as white blood cells and form part of the body's defense system.



Lymph capillaries

The lymph capillaries lie in the interstitial space and are finger-shaped projections. They have special openings through which all the substances that must be removed by lymph are taken up. They are joined to precollectors that carry the lymph away.