



Chelmsford Sri Srinivasa Perumal Temple

THE STREET, HATFIELD PEVEREL, CM3 2DL



: 07308886203



: info@cspt.org.uk



: www.cspt.org.uk



Dear Devotees,

With the divine blessings of Lord Srinivasa Perumal, we are pleased to announce the successful acquisition of premises for Chelmsford Sri Srinivasa Perumal Temple. We would like to express our heartfelt gratitude to all those devotees whose contributions were paramount to the success.

Renovation work is set to commence in the third week of May 2024 with the aim to perform the 'Kumbhabhishekam and Prana Pratishtha' of deities in the Autumn of 2024.

Your support is vital for the Temple and it will be much appreciated. Together, we can build a temple that serves as a beacon of faith, unity, and compassion for generations to come. Your donations are most welcome to this Divine mission.

Thank You - CSPT

As the Hindu population continues to grow in various regions across the UK, cities like Chelmsford have emerged as one of the most attractive places, drawing in aspiring Indian and South Asian communities. Naturally, with the growing Hindu populace, the desire for a Hindu place of worship arises among people within the town.

Chelmsford a city in Essex is home to a population of about 190,000 of which it is estimated that there are 4000 Hindu families and growing numbers.

In response to this spiritual need, members of the Hindu community have united to establish the Chelmsford Sri Srinivasa Perumal Temple. With the divine blessings and the unwavering devotion of its members, a suitable location has been secured for this sacred temple.

This permanent place of worship will operate year-round in Chelmsford, serving as a divine sanctuary for the current population and future generations. It will provide a sacred space for prayers, rituals, cultural celebrations, and traditional festivals, ensuring the preservation and growth of Hindu religious practices and heritage.

Deities



Lord Ganesha



Lord Murugan



Lord Shiva



Goddess Devi



Sita Rama Parivar



Navagraha

More deities after completion

FAMILY GOD



కుల தெయ்வం # కుటుంబ దేవుడు



కుటుంబ దేవరు # కుటుంబ దేవుడు



The First of its Kind Ceremonies and main Occasions in front of your family god

A Family God, known as Kula Deiva, is a divine deity that holds a special place in your family's traditions. This tradition continues in the present day, with your family honoring and worshipping the same deity. Your Family God offers protection and blessings to the members of the family and also extend these blessings to future generations.

Family God - Kula Deiva

Availability: 200 families have the opportunity to place their Family God in the temple.

Identification: Each Family God will be placed with the family name and the name of the deity.

Space Allocation: Each family will be allotted an equal space of approximately 1ft x 1ft.

Selection Criteria: The first 200 families from across the UK to apply will be selected on a first-come, first-served basis.

Display Options: Families can choose how to represent their deity, whether it be a photo frame, clay statue, Panchalogam statue, stone, etc.

Positioning: The specific location of each family's space on the wall will be assigned randomly to ensure fairness.

Pooja Stage: There will be a Pooja Stage in the hall where individual families can place their deities during special prayers and occasions.

Reservation and Donations: Devotees can reserve their space by donating £1001 or more. Donations can also be made in five installments.

Temple Services and Activities

Open Year-Round: The temple will be open every day of the year.

Opening Hours: The temple will be open in the mornings and evenings, with specific hours to be announced later.

Priest Availability: A priest will be present in the temple daily and home pujas.

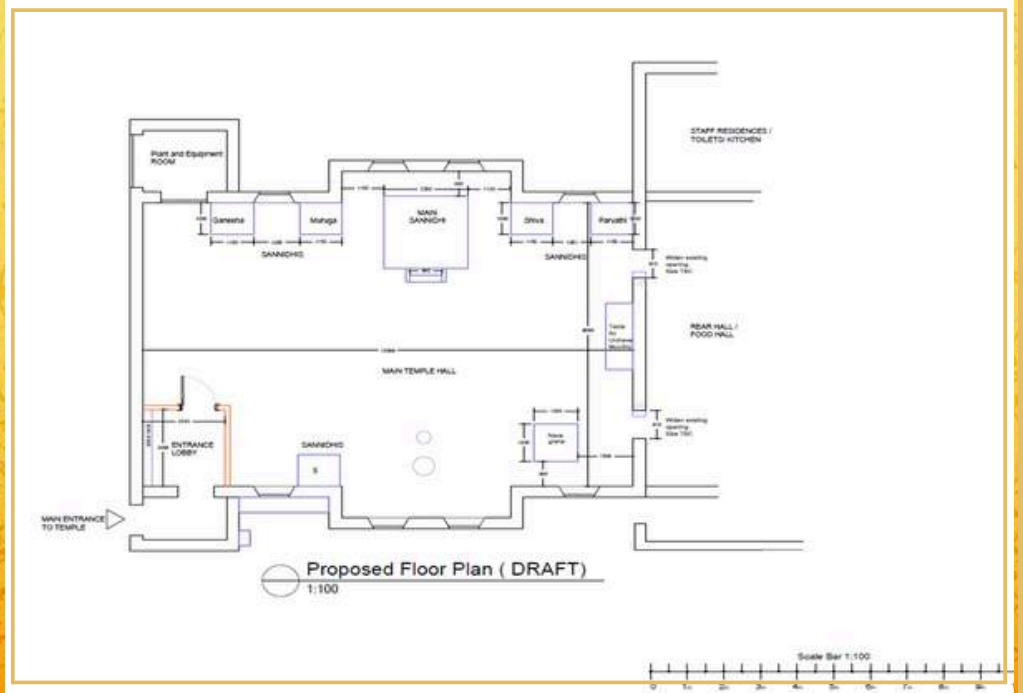
Special Events: There will be special Poojas and celebrations on traditional Hindu festival days throughout the year.

Prasadam Food: Devotees can receive Prasadam food every day.

Yoga Classes: The temple plans to provide space for teaching yoga.

Cultural Activities: Various activities will be organized to support and promote Hindu culture, mental health and wellbeing

Temple layout



Sannadhis design may differ on completion

Donation Options for Temple Renovation and Support

Individual or Group Contributions:

Individuals or groups of friends can donate towards specific parts of the renovation work.

Monthly Donations for Temple Requirement and Renovation:

Contributions can be made every month, with options such as £1001, £2001, or £5001 spread over a period 10 months.

Family God Registration:

The minimum donation for registering a Family God is £1001.

Six Sannadhis Construction Donations:

Donations are invited for the construction of the six Sannadhis.

Moolavar Garbhagriha:

Families can contribute by placing a brick in the Moolavar Sannadhi for £501 (or spread over 5 months).

Long-Term Monthly Subscriptions:

Temple Support: Families can subscribe to long-term support with a monthly donation starting from £20 per month.

Family God Support: Similarly, families can subscribe to support their Family God with a monthly donation starting from £20 per month.



Contact/Follow us:



: www.cspt.org.uk



: info@cspt.org.uk



: 07308886203

WhatsApp

cspt.org.uk

YouTube





Donation and Contribution:

Please set up a standing order or transfer the donations directly to our bank account using the details below

Bank: Metro Bank Plc

Account Name:

**Chelmsford Srinivasa Perumal
Temple**

Account no: 5264 4925

Sort Code: 23-05-80





Visitor Information

Chelmsford Sri Srinivasa Perumal Temple

THE STREET, HATFIELD PEVEREL, CM3 2DL



For any enquiries,
please feel free to contact us



07308 886203



chelmsfordtemple@gmail.com

Thank You
CSPT