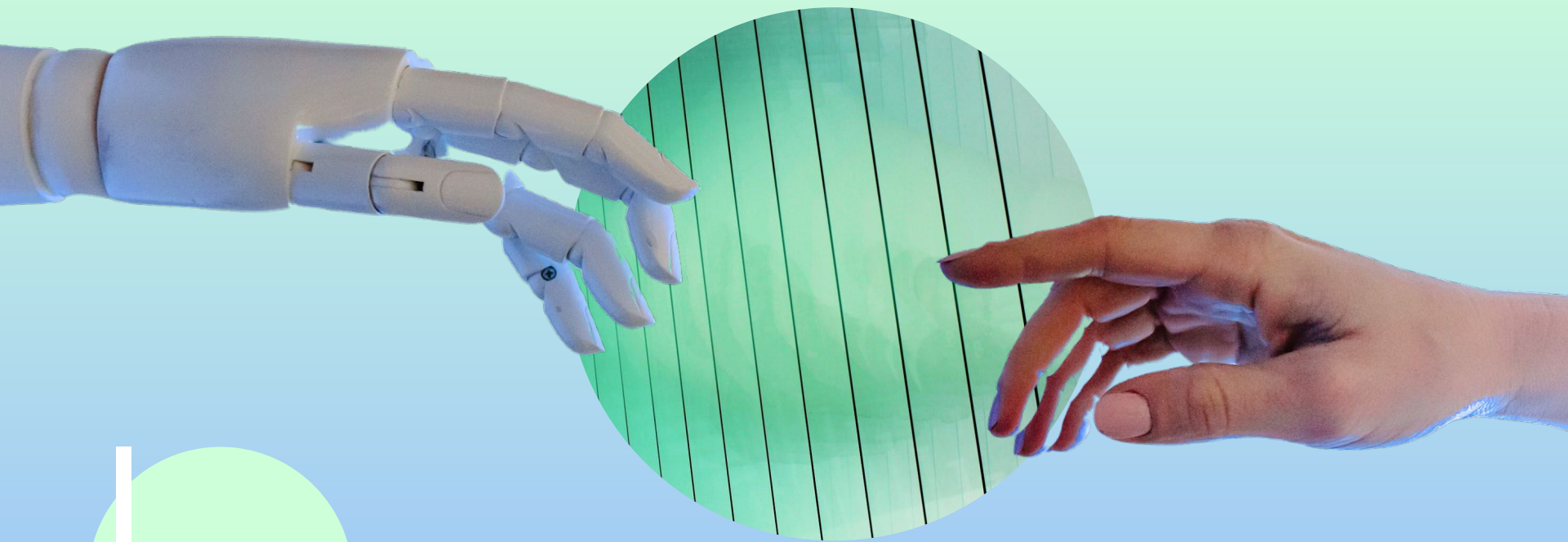


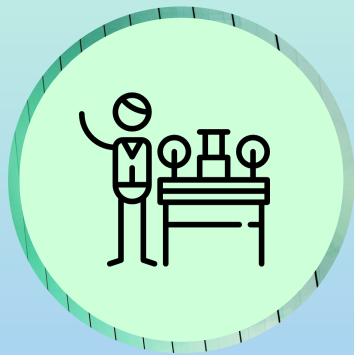
Generative

AI



History of Generative AI

Journey to Multimodal AI



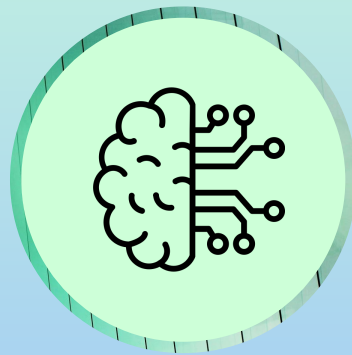
WWII to 1950s

Alan Turing - The
Imitation Game - Enigma
Machine



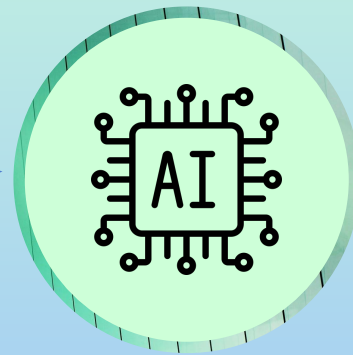
The 1970s to 1990s

Early AI, Rule Based
Systems, and
Predictive Analytics



The 2000s to 2020s

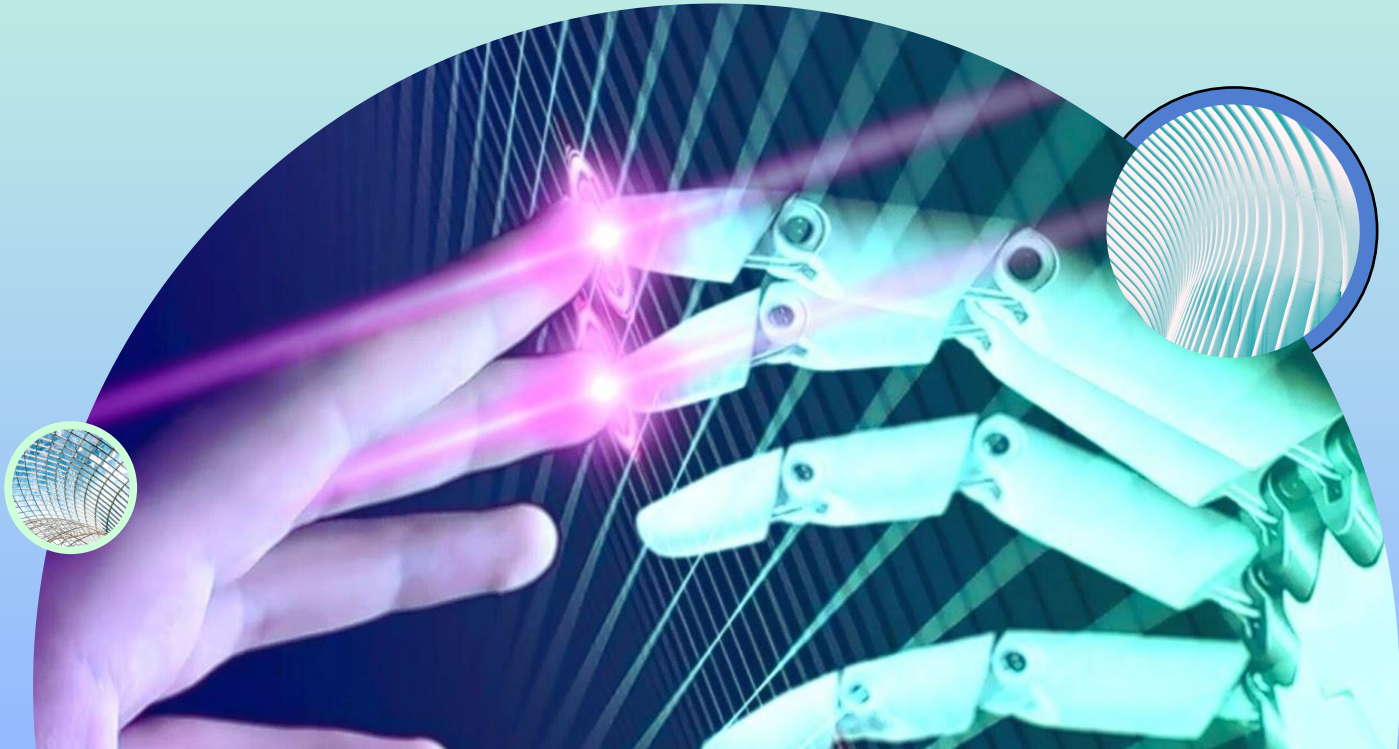
Machine Learning, Big
Data & GANs, and Deep
Learning



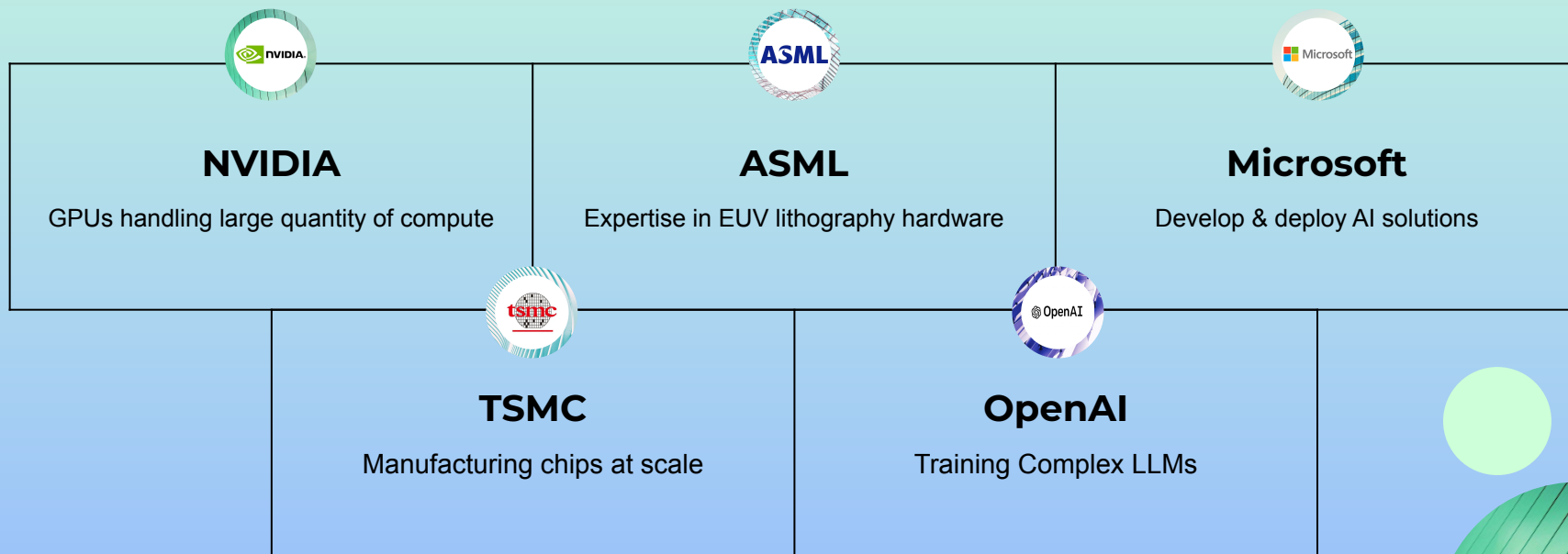
Present Day

Generative AI, LLMs, and
Multimodal AI

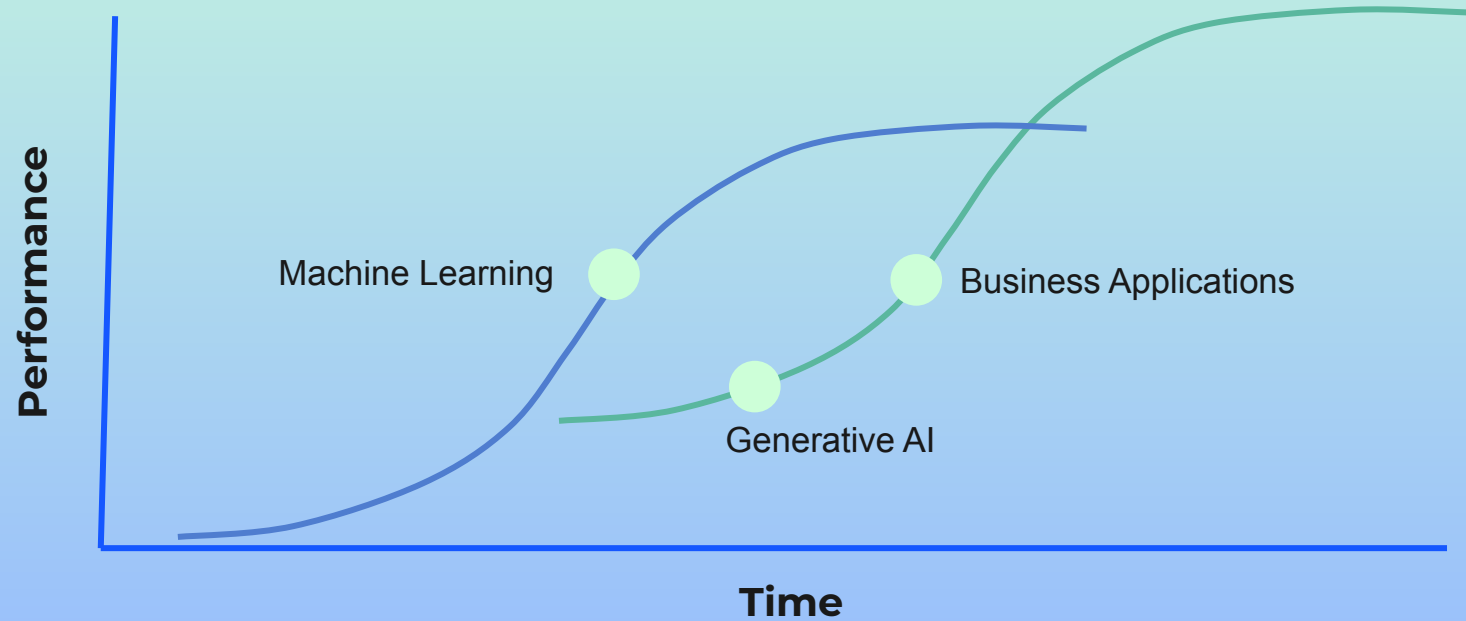
Industry Analysis

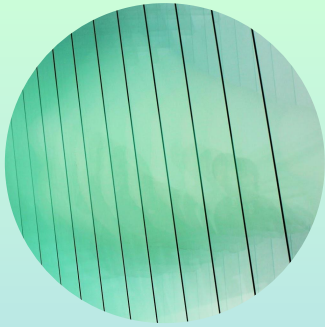


Modularity Analysis



S Curve Analysis





Platform Analysis

Platforms used to be about handling data & predictive analytics

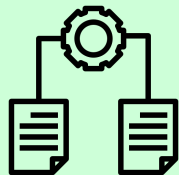
Now it's about using Generative AI as a platform to build own applications

Move toward a platform company that can leverage any data to build Generative AI applications





Dominant Design Analysis



**Recurrent Neural
Networks**



**Long Short Term
Memory**



Transformers





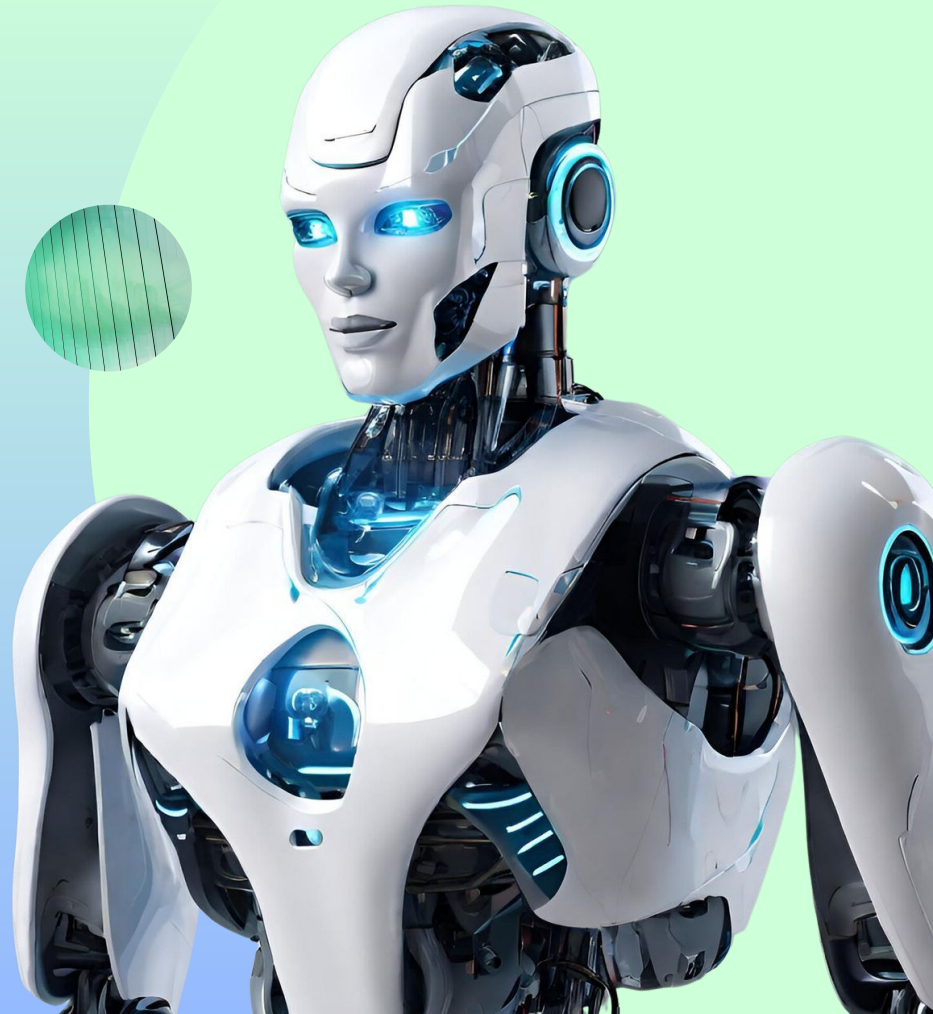
Players Analysis

Key Players






AI



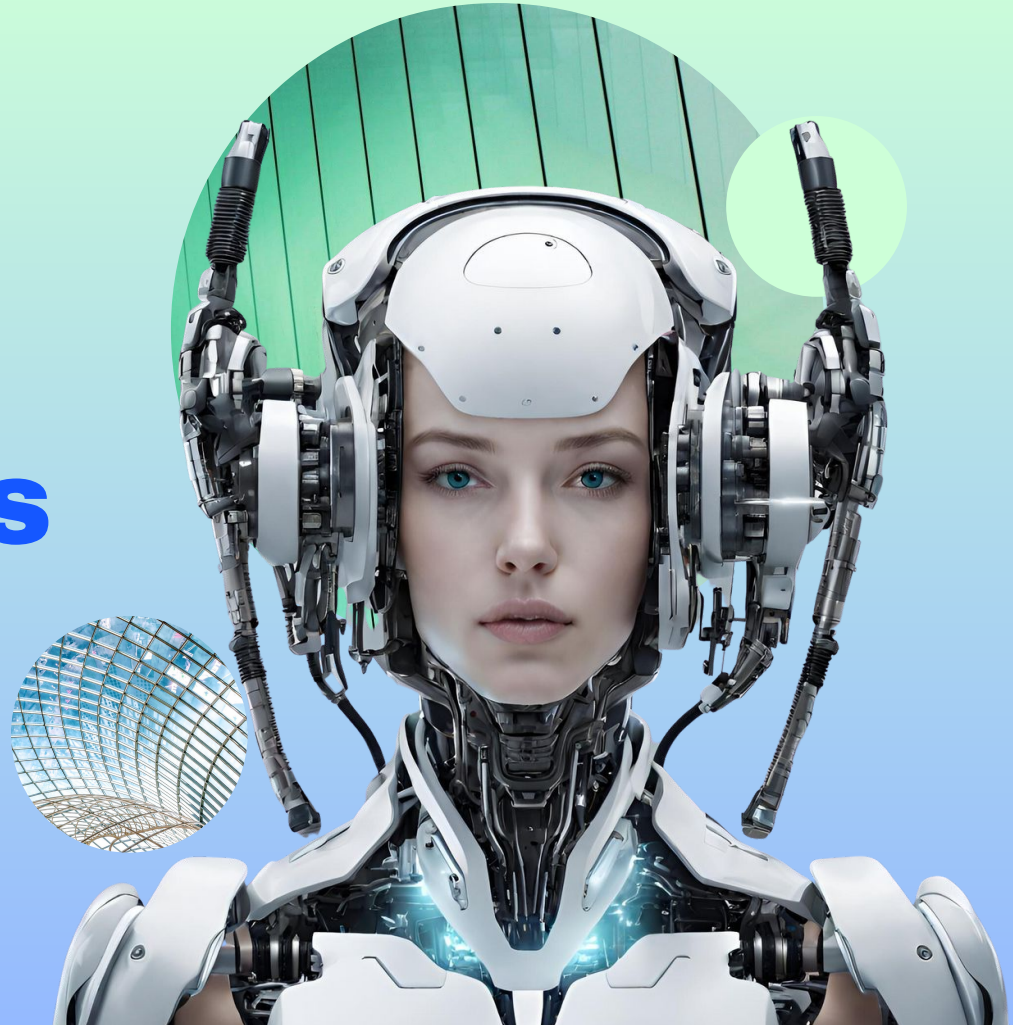
AIMESOFT



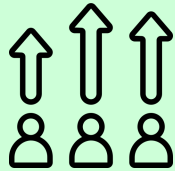
Comparative Analysis

	Safety & Reliability Focus	Developer Productivity Focus	Creative Content Focus	Multimodal AI Focus	Enterprise Solutions Focus	Public API Accessibility
 Anthropic	✓	✗	✗	✗	✓	✗
 Google	✗	✗	✗	✗	✓	✓
 Microsoft	✗	✓	✗	✗	✓	✓
 OpenAI	✗	✗	✓	✗	✓	✓
 Aimesoft	✗	✗	✗	✓	✓	✗

Future Implications



Forward Outlook



Multimodal capabilities will advance, enhancing user experiences



AI integration will evolve, seamlessly accompanying users in various interfaces.



Companies will offer AI as a service, setting the trend for businesses to adopt and integrate these technologies



Emphasis on model explainability will rise, promoting responsible AI practices.

Three circular decorative elements are positioned around the text. The top-left circle features a green-to-blue gradient with thin, dark diagonal lines. The top-right circle contains a blue-to-white gradient with concentric, slightly wavy lines. The bottom-center circle displays a blue-to-white gradient with a grid-like pattern of intersecting lines.

Thank you!