

SwitchBoard

Fitting Instructions

Method 1

If using LDE004, LDE030 or LDE034 Trims follow this method.

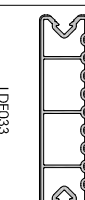
Parts List:

QuickClip

Starter Clip

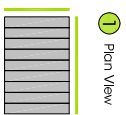
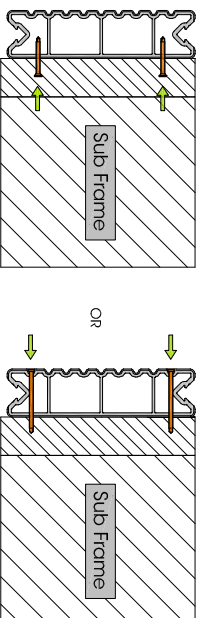
SwitchBoard

Trims

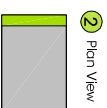
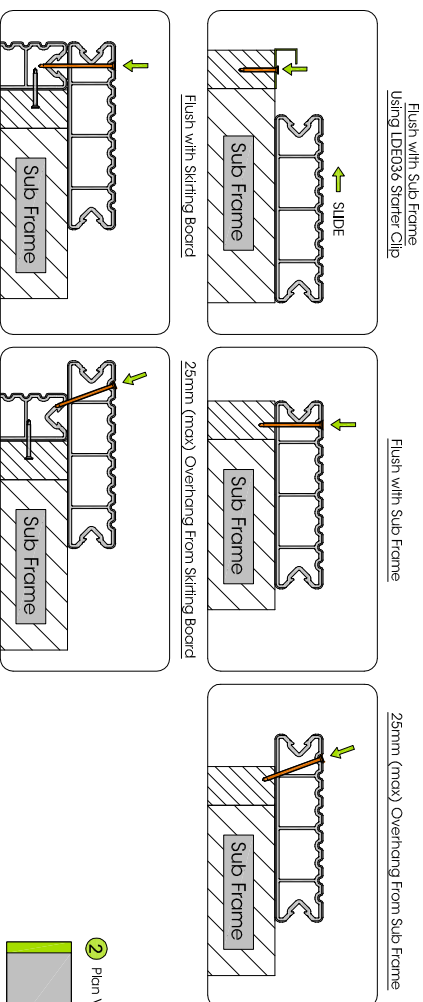


SwitchBoard's innovative design means it can be installed either side up.

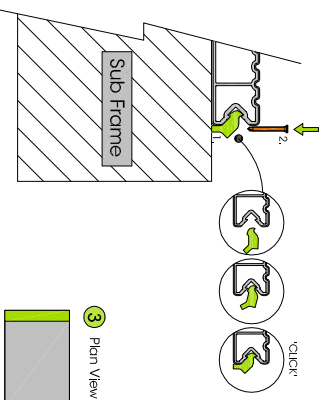
- 1 Install the skirting onto sub frame where required.



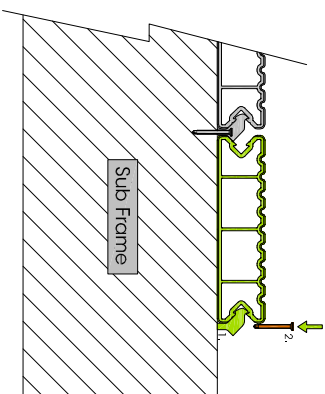
- 2 Fix down the first board in position at 600mm (max) centres along the length of the board. See fixing methods below.



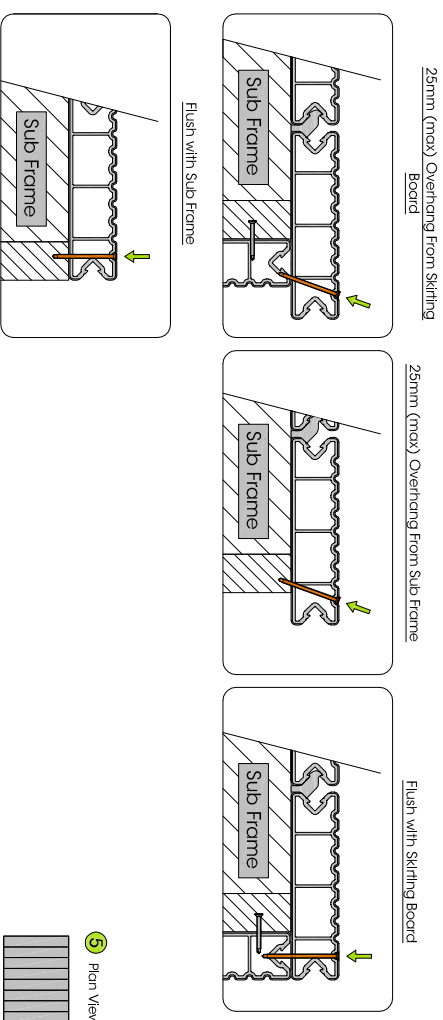
- 3 Insert QuickClips at 600mm (max) centres along the length of the board and screw in place.



- 4 Butt the next board up to the clips and secure this board as shown in step 3. Repeat for all remaining boards.



- 5 Fix down final board in position at 600mm (max) centres along the length of the board. See fixing methods below.



- 6 Install trims around the exposed edges of the deck. First cut trims to length with mitred corners where required then fix into position using an appropriate fixing method. See parts list for available trims.

Trims can be secured in place using an appropriate adhesive or mechanical fixing method.

Where necessary some PVCu trims may require the Inderside leg to be snapped off.

