



Message from PAA President, Pat Denney


We have the date and venue for our Spring Show! It will be at the Civic Center May 23-27 and will be a Members-Only show with no judging and no awards. You must be a member in good standing to enter. If you have not paid dues for 2022, please mail them to Peninsula Art Association PO Box 11 Shelton, WA 98584. If you know of other artists that would be interested in participating in the show—please encourage them to become a member soon. Download a membership application from the sheltonarts.com website and bring it to the March meeting or mail to the PO Box noted above (along with a check for dues). Membership status verification will be done April 30th; all members (new and experienced!) who are in good standing on that date will be able to participate in the show. Sales from the show will be through the individual artist only.

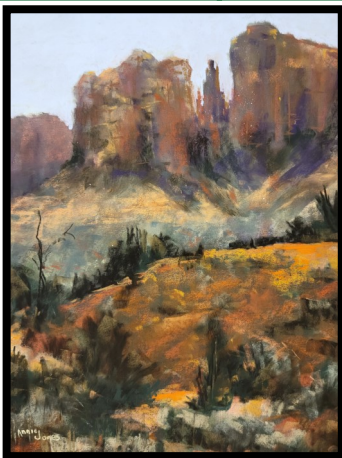
Putting on a show, even for members only, takes a lot of helping hands. Please contact me to let me know if you are available to assist in some way. A little or a lot—it all helps! As we get closer, we will send out information on specific tasks that are still needing to be completed by a volunteer.

Thanks to **Annie Jones** for donating her time to teach us basic tips and tricks with pastels at our February meeting. Members enjoyed putting those tips to practice creating a still life. So many variations! So much talent!

If you would like to share about your particular medium or skill at one of our monthly meetings, please let us know.

You never know who you will inspire!

 Remember PAA meets the 2nd Thursday of the month *unless noted otherwise	3/10/22	PAA Meeting @ Civic Center	1 PM	Member Show planning
	4/14/22	PAA Meeting @ Civic Center	1 PM	To be determined
	5/23—27	Members-Only Art Show		Watch the website and upcoming newsletters for more information



Annie Jones

Connie Simpson



Sharon Brocha

Carmella LeRose Myers



To see more artwork from PAA members, go to www.sheltonarts.com and click on “Gallery” at the top.

Don't see your artwork on the web page? Send your photos to Renee at malkuri@comcast.net

We'd love to see what you've been doing!