



**Message from PAA President, Pat Denney**

The Peninsula Art Association has been featured in the Spring edition of “Tracing the Fjord” magazine! This is a great local quarterly magazine featuring items of interest, places to visit and events happening around the Hood Canal.

You just might get your next inspiration or opportunity from it! Pick up your copy today and see for yourself!


I would like to take a moment to send out healing thoughts to any of our members who are injured, ill or struggling in any way. You are an important and valuable member, not just to PAA, but to your family and your community. Your struggles shape your journey as an artist. You are stronger than you know. You got this! Members wanting to contact Deb Hart can send her a note or card In Care of Regency Rehab Nursing 1811 22nd Ave SE Olympia, Wa 98501.

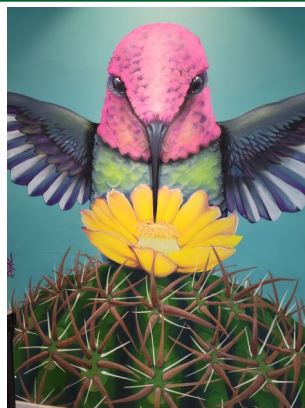
We are gearing up for our Members Only Art Show in May. It’s important to make sure your dues are paid for 2022, if you want to participate in the show. Dues are \$25 for a single, \$30 for a family (limit of 2 at same address). Send your payment to PAA Box 11 Shelton, WA 98584 or to Kathy Jacobson 490 SE Crescent Dr Shelton, WA 98584. Be sure to include your name and verify your current contact information for proper recording. We don’t want you to miss out on information about future events. If you know of any non-member artists who are interested in participating in the show, they can download a membership application off of our website at [www.sheltonarts.com](http://www.sheltonarts.com). Please don’t delay paying your dues even if you are not participating in the show. Your timeliness helps with planning!

Making art is typically a very singular experience but putting on an Art Show is a group effort! We need volunteers to help prepare, staff the show and clean up afterwards. Check out more information about volunteer opportunities on the second page. If you can help in any capacity, let us know right away. Again, timeliness helps in planning!

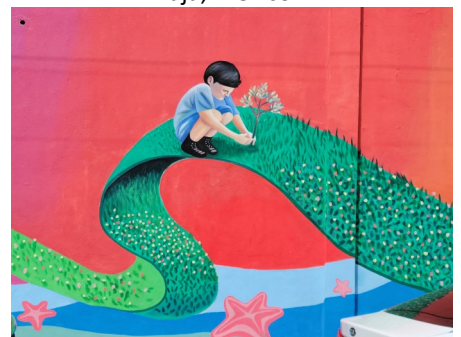
We are always looking for program ideas for our monthly meetings. What would you like to see? Any art-related suggestions would be appreciated! If you would like to share about your particular medium or skill, please let us know.

**You never know who you will inspire!**

 Remember PAA meets the 2nd Thursday of the month *unless noted otherwise	<b>4/14/22</b>	<b>PAA Meeting @ Civic Center</b>	<b>1 PM</b>	<b>Becky Schuyten—Southern Trip</b>
	At our April meeting, Becky Schuyten will do a slide show sharing pictures from her trip south. From redwoods to natural rock formations that would make sculptors drool, as well as, giant cacti and even some rocks and minerals from The Rare Earth Gallery.			
	<b>5/12/22</b>	<b>PAA Meeting @ Civic Center</b>	<b>1 PM</b>	<b>Art Show Prep &amp; Information</b>
	<b>5/20/22</b>	<b>Art Show Submissions</b>	<b>11AM—4:30PM</b>	<b>Civic Center</b>
	<b>5/23—27</b>	<b>Members-Only Art Show</b>	<b>See next page for detailed information</b>	



Some of street art in Playa de Rosarito Baja, Mexico



To see more artwork from PAA members, go to [www.sheltonarts.com](http://www.sheltonarts.com) and click on “Gallery” at the top.

Don’t see your artwork on the web page? Send your photos to Renee at [malkuri@comcast.net](mailto:malkuri@comcast.net)

**We’d love to see what you’ve been doing!**



# Peninsula Art Association Members Only Art Show

May 23—27, 2022

9 AM to 4:30 PM (Current CC hours)

Shelton Civic Center

525 Cota Street Shelton, WA 98584

- ◇ **All artists entering the show must be current with their dues.** If you haven't paid your 2022 dues yet, don't delay! Non-member artists who are interested in participating can download the membership application from our website at [www.sheltonarts.com](http://www.sheltonarts.com). The application contains membership pricing and the address to mail your application. Applications must be received no later than May 1st to be eligible to participate in show.
- ◇ **Up to 3 pieces per member may be submitted.** Please send information about your entries to Belle Brex as soon as possible so she has plenty of time to create and print cards for each submission. May 1st is the deadline to let her know what you are planning to submit. Email the title, medium used and price (if for sale) for each item to [Bellebrex.artist@gmail.com](mailto:Bellebrex.artist@gmail.com), along with any special display needs. All sales transactions handled by the artist only.
- ◇ **Entries will be turned in on Friday, May 20th from 11 AM to 4:30 PM at the Civic Center.** Submissions will not be accepted after this. If you are not able to bring your entries during this time, please make arrangements with another member to bring your work. This will be the absolute drop-dead date for EXISTING members to pay their 2022 dues to participate in the show. Can't emphasize this enough—your dues must be up to date in order to participate!
- ◇ **All sales will be handled privately between artist and customer.** The Civic Center and PAA will not handle any sales.
- ◇ **People's Choice Award.** As this is a members only event, we will be awarding one prize this year. Be sure to cast your vote!

## Art Show "Behind the Scene" Volunteers Needed

There are several opportunities for members to help out with the Art Show behind the scenes. If you are not comfortable talking with the public during the event, then these opportunities are for you!

- ◆ Want to help with publicity ideas and activities prior to the event? Contact Amy Wagner at [amyjillwagner@gmail.com](mailto:amyjillwagner@gmail.com) or Rebecca Schuyten at [beckyschuyten@gmail.com](mailto:beckyschuyten@gmail.com).
- ◆ A Chairman and volunteers are needed to set up the morning of the 23rd and/or take down the evening of the 27th. Contact Pat Denney at [rpdenn@comcast.net](mailto:rpdenn@comcast.net)
  - ◆ Can you help with receiving submissions on the 20th? Contact Pat Denney at [rpdenn@comcast.net](mailto:rpdenn@comcast.net)
- ◆ Refreshments for the volunteers each day are always appreciated! Contact Sharon Brocha at [sharonbrocha@gmail.com](mailto:sharonbrocha@gmail.com)

*All hands on deck! Let's get this party started!*

## Art Show Docent Volunteers Needed

Responsibilities include having visitors sign guest book, acting as a guide, answering questions the public might have, encouraging attendees to vote for People's Choice Award and, most importantly, making sure the art is protected and not touched.

Shifts are 2 hours each, Monday through Friday. Slots presently needed are 11am to 1pm; 1pm to 3pm; and 3pm to 5pm. Contact Kathy Jacobson at [KJ50100@comcast.net](mailto:KJ50100@comcast.net) with a couple of time slots that you would be available to fill in at least one spot. This will make it easier and more efficient to schedule volunteers.