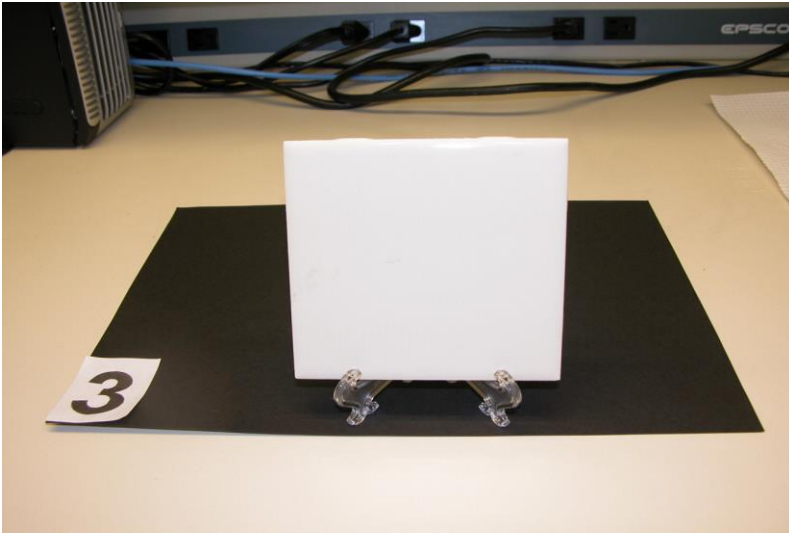
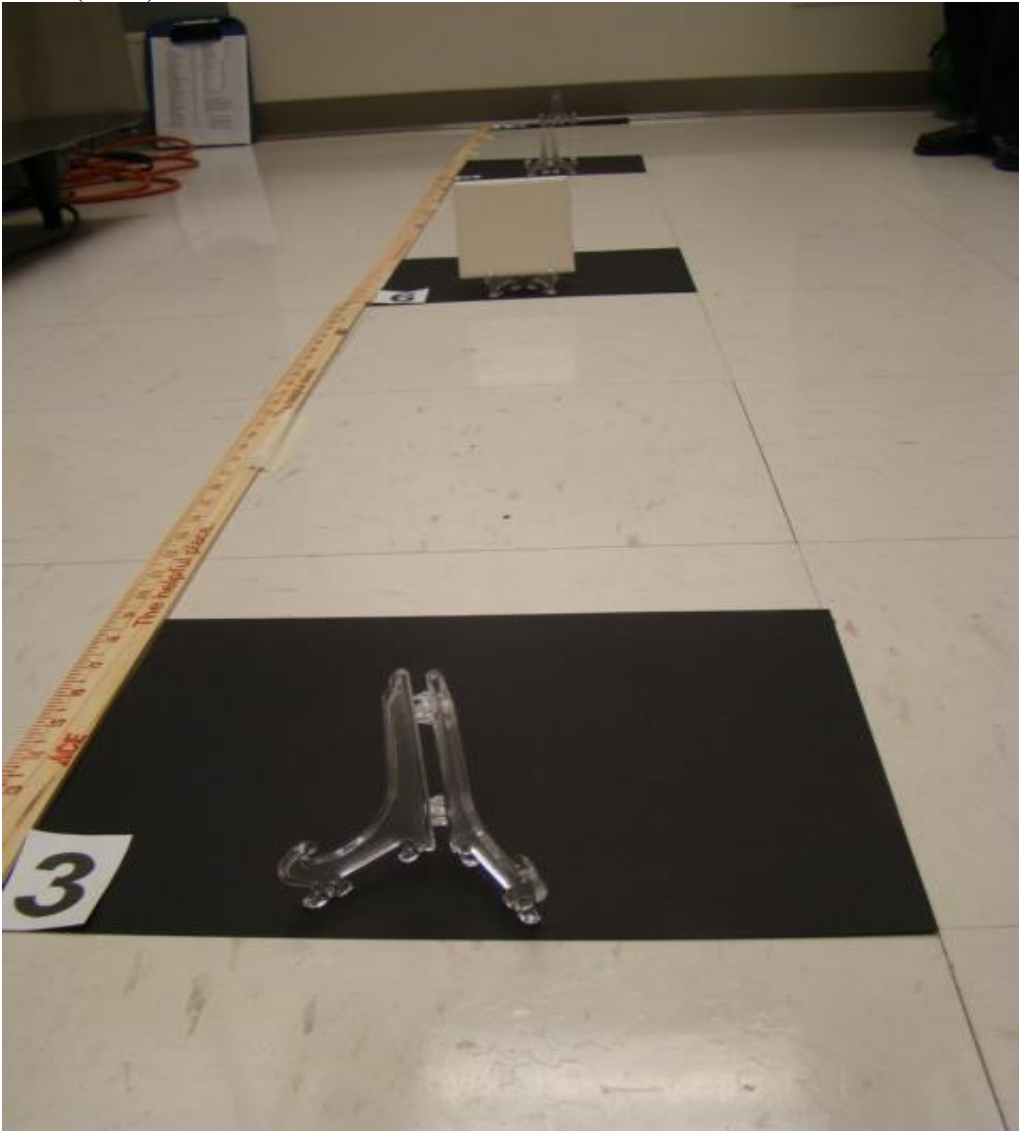


Elevated Health Systems, MRSA irradiation with EHS UVC prototype bulb and set-up  
December 3-4, 2009. Wichita, KS.



5 matching 4x4 ceramic bathroom tiles inoculated with 5 million MRSA colony forming units (cfu's) each.



Tile locations 3, 6, 9 and 12 ft.



EHS #1 mockup for MRSA

test.



2916 E. CENTRAL  
WICHITA, KANSAS 67214

1-316-265-4533  
1-800-876-0243  
FAX 1-316-265-2553

**Testing Date:** December 3-4, 2009

**Purpose:** Determine effectiveness of UV light exposure to eradicate Methicillin Resistant Staphylococcus aureus (MRSA) inoculated on tile at various distances.

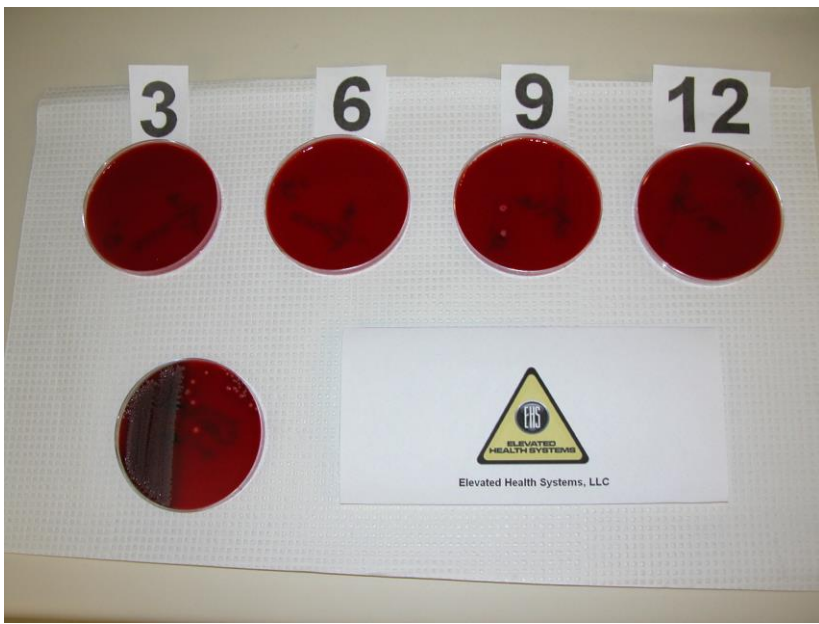
**Method:** 5 tiles were cleaned using 70% isopropyl alcohol and allowed to air dry overnight. A 0.5 McF suspension using 0.45% saline and a clinical lab strain of MRSA was prepared. 50 ul of the suspension was inoculated on each tile and allowed to dry at room temperature for 8 hours. One tile was used as a control tile (no UV exposure), and the other four tiles were exposed to UV light (instrument and specifications provided by manufacturer) for 15 minutes at distances of three, six, nine and twelve feet from the source. The five plates were swabbed with a saline dampened swab, covering the entire inoculation area. The swabs were plated on TSA with 5% sheep blood plates and incubated at 35 degrees C. for 24 hours.

**Results:** The control plate had moderate growth of MRSA growing into the 2<sup>nd</sup> streaking, with no colonies observed into the 3<sup>rd</sup> streaking. No growth was observed on the tiles exposed to UV light set at three, six, or twelve feet. Two colony forming units were observed on the tile set at nine feet.

**Interpretation:** The UV exposure significantly reduced the MRSA colony count in this single testing event.

**Testing Location:** Affiliated Medical Services Laboratory, Inc.  
2916 E. Central  
Wichita, KS 67214

AMS Lab provided test results and no endorsement should be implied.

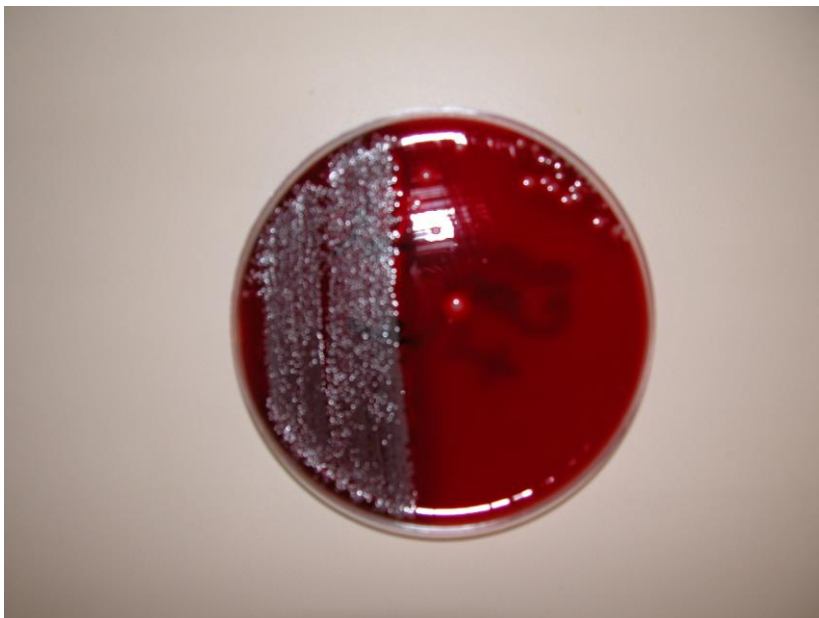


All plates after 24 hour incubation. Control sample plate bottom left.

All plates after 24 hour incubation.



Control tile after incubation



Control Plate. 5 million Colony Forming Units (cfu's) grew to 100 million cfu's in 24 hours.

Control Plate. 5 million Colony Forming Units (cfu's) grew to 100 million cfu's in 24 hours.





No MRSA growth after 15 minute

dose with EHS UVC.



Close up 3' view, 100% MRSA kill.



No MRSA growth 6' tile.



Close up view, 100% MRSA kill, no growth.



99.999999% MRSA kill



Close up view, only 2 cfu's. (Control tile contained 100 million cfu's.)



No MRSA growth on 12' tile.



Close up 12' view, 100% MRSA kill, no growth.