

# Taurus

---

## 650

# PARTS MANUAL



TABLE OF CONTENTS

Order of Introduction	Page
A. Purpose of the Parts Manual .....	i
B. Location of Serial Numbers.....	i
C. Abbreviations .....	i
D. Explanation of the Format .....	ii
E. How to Use the Parts Manual .....	ii
F. How to Order Parts .....	ii

Index

Group Number	Group Name	Page Number
1.0	Transmission.....	1/2
2.0	Rear Suspension & Wheels.....	3
3.0	Throttle & Engine.....	4
4.0	Exhaust System.....	5
5.0	Front Fender & Rack.....	6
6.0	Front Body.....	7
7.0	Rear Body & Frame.....	8
8.0	Front Steering & Suspension.....	9
9.0	Front Axle & Brake System.....	10
10.0	Rear Brake System.....	11
11.0	Hydraulic Brake Components.....	12
12.0	Torque Converter System.....	13
13.0	Clutches - Power Bloc.....	14
14.0	Fuel System.....	15
15.0	Electrical System.....	16

PARTS MANUAL INTRODUCTION

**A. PURPOSE OF THE PARTS MANUAL**

This manual has been prepared to better acquaint the dealer and mechanic with the Taurus All Terrain Vehicle parts and identification. It lists only parts available as spare parts.

**B. LOCATION OF SERIAL NUMBERS**

The Vehicle Serial Number is stamped on a plate which is located to the right of and just behind the steering column.

The Transmission Serial Number is stamped onto the transmission housing over the left rear axle.

The Engine Serial Number is located on the top rear of the engine. Refer to the Briggs & Stratton Engine Parts Manual (ODG part number 370-12) for engine parts.

**C. ABBREVIATIONS**

Remarks Column:

AA - Available as assembly only	NA - Not available
AC - Available as component only	RO - Replaces all others
AS - Available as set only	RR - Recommended as replacement

Description Column:

Alum	-	Aluminum	ID	-	Inside Diameter
Approx	-	Approximately	Incl	-	Includes
ASS'Y	-	Assembly	lg	-	Long
BRKT	-	Bracket	LH	-	Left Hand
c/w	-	Complete with	mm	-	Millimeter
dia	-	Diameter	M	-	Metric
FHMS	-	Flat Head Machine Screw	OD	-	Outside Diameter
FSHMS	-	Flat Socket Head Machine Screw	ref#	-	Reference Number
ga	-	Gauge	RH	-	Right Hand
HC	-	High Collar	S	-	Sprocket
HD	-	Head	SHCS	-	Socket Head Cap Screw
HHCS	-	Hex Head Cap Screw	SLT	-	Slot
HWH	-	Hex Washer Head	spd	-	Speed
HWHCS	-	Hex Washer Head Cap Screw	T	-	Teeth

D. EXPLANATION OF THE FORMAT

- Ref. # - Reference Number - for reference between Part Illustration and Part Description only.  
Part # - Part Number - Taurus part number for identification and ordering.  
Remarks - Abbreviations are used here to aid in the selection of the correct part.  
(see Abbreviations above in "C")  
Description - Part Name (written in capital letters) for identification.  
IMPORTANT: Other details may be indicated in the description, including the serial number of the vehicles this part is restricted to. Please check this so that you order the correct part.  
Qty - Indicates the quantity of parts used in that Group assembly.

E. HOW TO USE THE PARTS MANUAL

1. Select the assembly Group in the Index on page (i) and turn to the correct page indicated.
2. Locate the part desired on the Group illustration and note its reference number.
3. Locate the Ref. # (Reference Number) in the parts list below or next to the illustration and note the Part Number, Description and Quantity.

- \* Ref No. (Reference Number), such as 17a means the same part is used in more than one place in the Group. Refer also to 17b, etc..
- \* When a Reference Number is listed more than once, ie 20, as shown in the accompanying list, the Part Numbers will be different. When this occurs, be sure to note the references in the Description and serial numbers given.
- \* The serial numbers given in the description indicate what vehicles this part is used on, such as "from 3W100" means all vehicles from and including 3W100 use this part. The words "to 3W200" mean all vehicles up to and including 3W200 use this part.

19	455-18
20	455-08
20	455-20

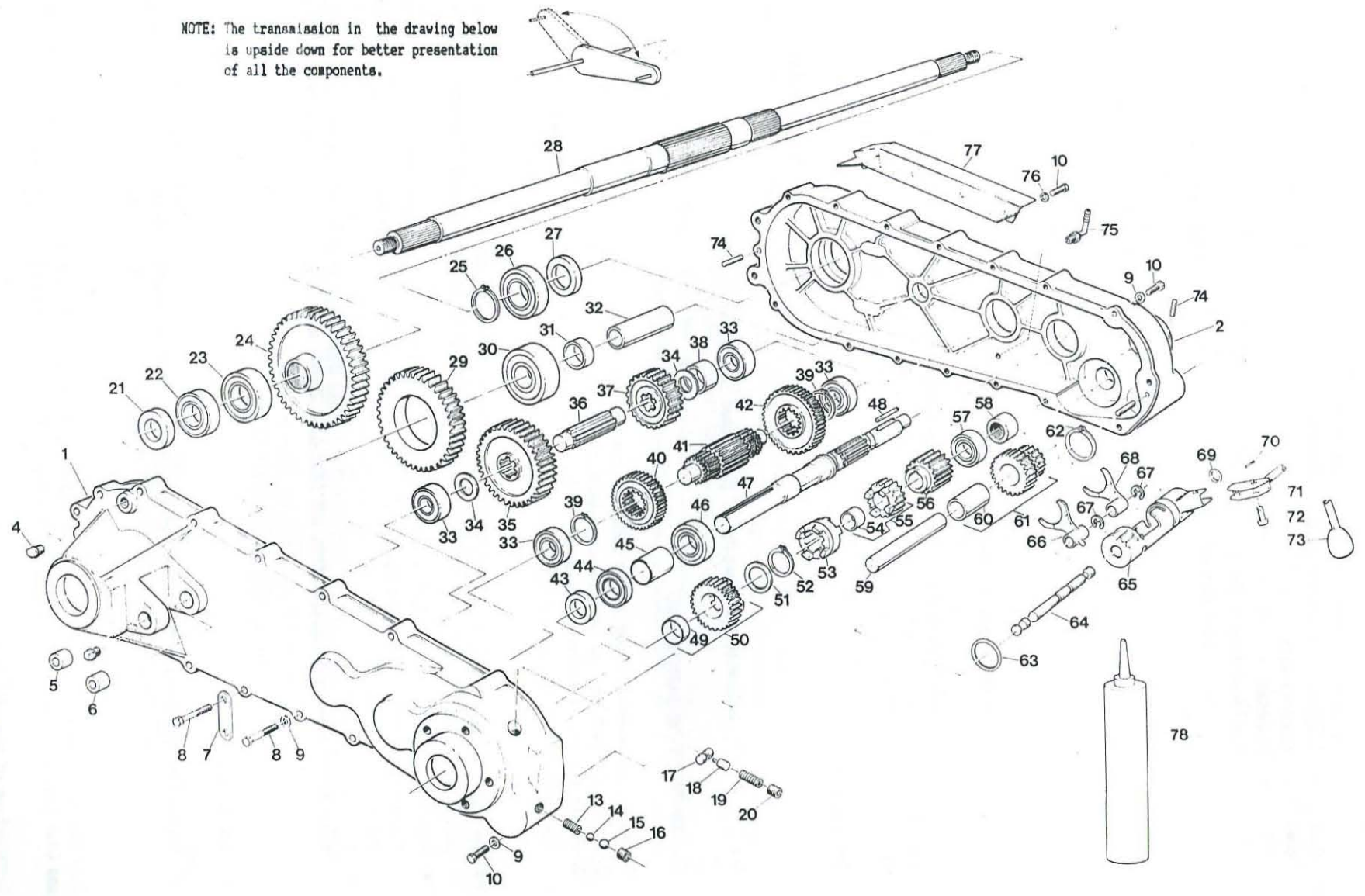
F. HOW TO ORDER PARTS

To ensure that you receive the correct part which you require, please indicate the quantity, Taurus Part Number and Part Name in your order. DO NOT order by Key Number or Page Number.

This manual is based on the latest product information available at the time of printing. Ontario Drive and Gear Limited reserves the right to make changes at any time and without obligation.

Reproduction of any part of this publication is prohibited without prior permission.

NOTE: The transmission in the drawing below is upside down for better presentation of all the components.

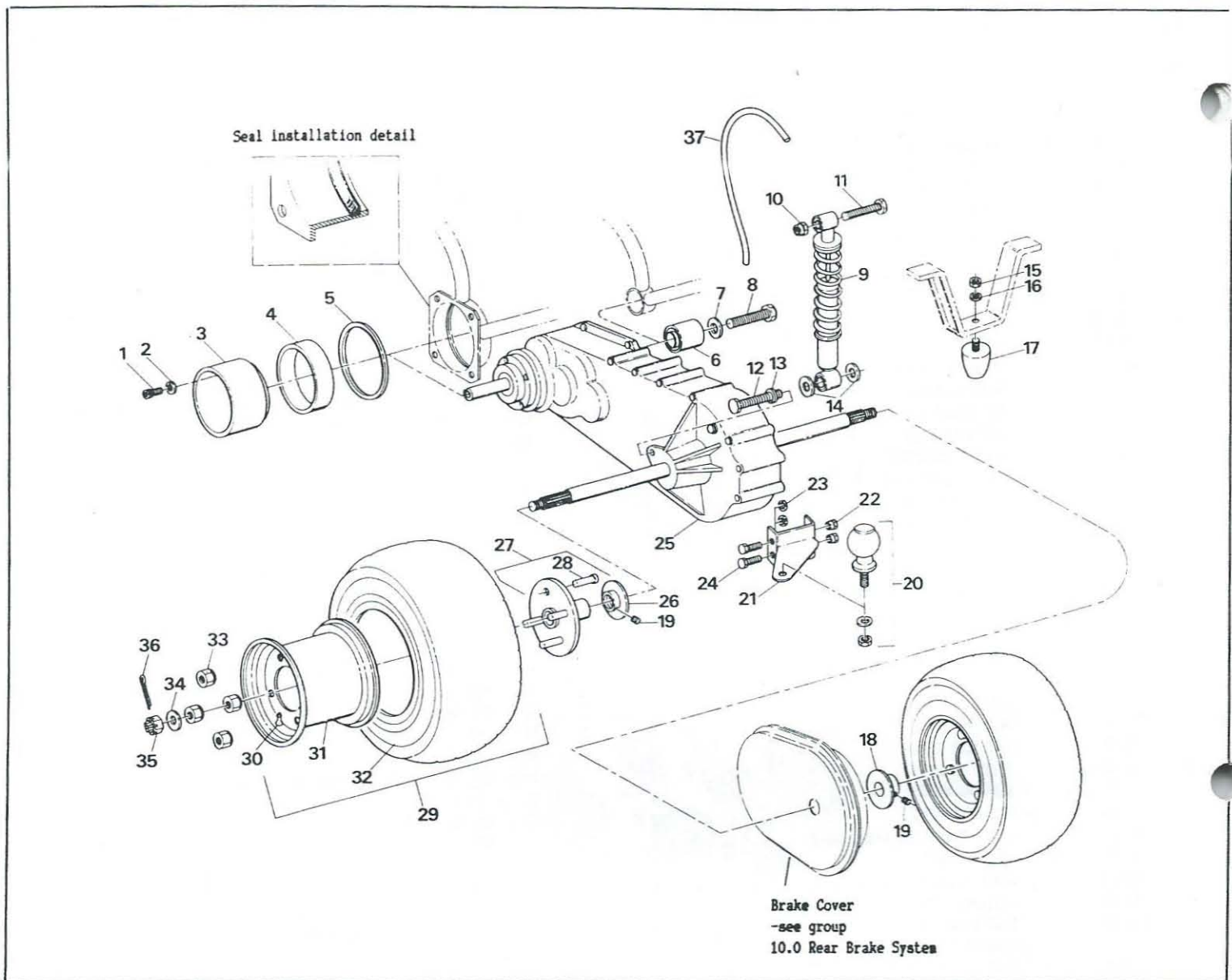


1

# 1.0 Transmission

Ref#	Part #	Description	Qty	Ref#	Part #	Description	Qty
*	40-00	TRANSMISSION, Incl ref# 1 to 77		42	40-14	LOW GEAR, 51-T	1
1	40-01	HOUSING - LH	1	43	472-03	OIL SEAL 30x47x7 mm	1
2	40-02	HOUSING - RH	1	44	471-09	BEARING #6006	1
4	103-02	DRAIN PLUG	2	45	40-19	DISTANCE SLEEVE	1
5	40-05	INSERT	1	46	471-02	BEARING #6206	1
6	40-04	THREADED INSERT, M10	1	47	40-18	INPUT SHAFT	1
7	40-69	LIFTING LUG	1	48	110-02	KEY 3/16x7/8	1
8	473-07	H.H.C.S. 5/16-18x2"	11	49	475-02	BUSHING, AA-1212-7, 1x 1.25x 1/2" lg	1
9	108-24	WASHER 5/16	14	50	40-15	HIGH PINION, 31-T, Incl ref# 49	1
10	103-38	H.H.C.S. 5/16-18x1 1/4"	7	51	108-36	WASHER	1
13	486-05	SPRING 3/8" bore	1	52	107-04	SNAP RING 1400-98	1
14	479-03	BEARING BALL 3/8"	1	53	40-16	DOG CLUTCH	1
15	479-02	BEARING BALL 1/2"	1	54	475-04	BUSHING, AA-838-16, .751x.878x3/4"lg.	1
16	473-15	SET SCREW 1/2"	2	55	40-17	LOW PINION, 19-T, Incl ref# 54	1
17	40-34	SHIFT LOCK PIN	1	56	40-26	REVERSE IDLER, 19-T	1
18	40-42	ROLLER ASSEMBLY	1	57	471-04	BEARING #6303	1
19	486-06	SPRING 1/2" bore	1	58	40-31	INSERT KIT	1
20	473-18	SET SCREW 5/8"	1	59	40-37	REVERSE SHAFT	1
21	472-05	OIL SEAL 40x60x8 mm	2	60	105-08	BUSHING, AA-838-5, .751 x .878 x 1 1/4" lg.	1
22	471-07	BEARING #6008	1			see ref# 61	
23	471-08	BEARING #6209	1	61	40-36	REVERSE DOUBLE GEAR, 19/27-T, Incl ref# 60	1
24	40-07	FINAL DRIVE GEAR, 53-T	1	62	476-05	SNAP RING N-1800-150	1
25	476-01	SNAP RING 1400-196	1	63	483-01	O-RING #125	1
26	471-10	BEARING #6009	1	64	40-33	SHIFT SHAFT	1
27	472-06	OIL SEAL 45x65x8	1	65	40-30	CAM SHAFT ASSEMBLY	1
28	40-03	REAR AXLE	1	66	40-29	FORWARD FORK	1
29	40-08	IDLER GEAR, 43-T	1	67	476-04	SNAP RING 1500-0050	2
30	471-03	BEARING #6308	1	68	40-32	REVERSE FORK	1
31	40-45	DISTANCE RING	1	69	483-02	O-RING #112	1
32	40-06	IDLER SHAFT	1	70	481-02	COTTER PIN, 5/32x1 1/2"	1
33	471-01	BEARING #6205	4	71	40-35	SHIFT LEVER ASSEMBLY	1
34	40-24	DISTANCE RING	2	72	481-01	CLEVIS PIN, B374	1
35	40-10	LARGE REDUCTION GEAR, 46-T	1	73	801-12	SHIFT KNOB	1
36	40-11	SPLINE SHAFT	1	74	104-03	DOWEL PIN 1/4x3/4" lg	3
37	40-09	SMALL REDUCTION GEAR, 25-T	1	75	608-25	FUEL TANK FITTING	1
38	40-25	DISTANCE RING	1	76	108-05	LOCKWASHER 5/16	3
39	476-02	SNAP RING 1400-137	2	77	40-39	SKID PLATE ASSEMBLY	1
40	40-12	HIGH GEAR, 39-T	1	78	486-11	GASKET SEALANT, Loctite Gasket Eliminator	
41	40-13	GEAR SHAFT, 14-T	1			10.15 fl. oz.	

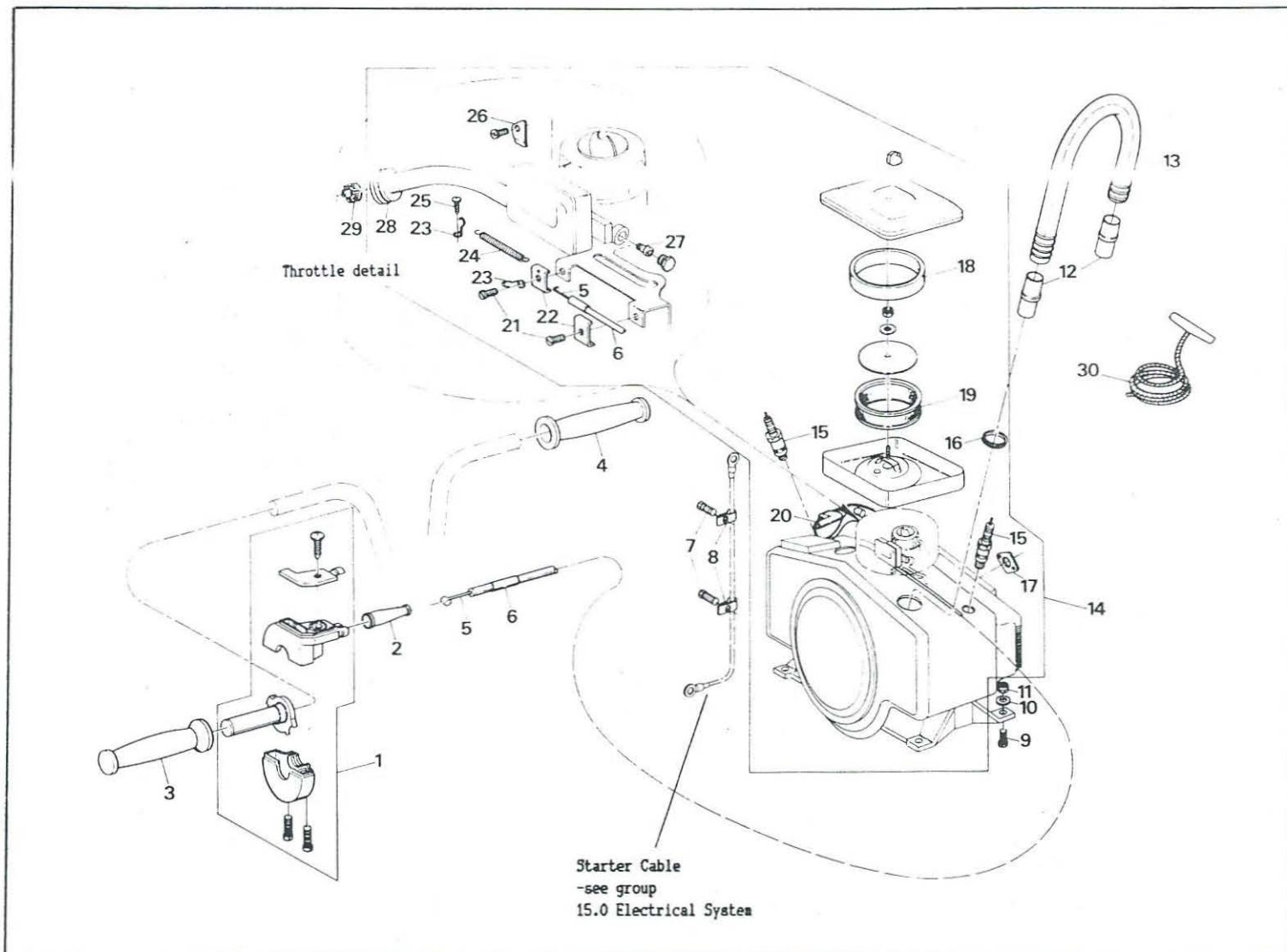
## 2.0 Rear Suspension & Wheels



## 2.0 Rear Suspension & Wheels

Ref#	Part #	Description	Qty	Ref#	Part #	Description	Qty
1	473-23	SHCS, 5/16-18x1 1/4"	5	19	615-04	SET SCREW, #10-32x3/16"	2
2	108-02	HC. LOCKWASHER, 5/16"	5	20	100-61	TRAILER COUPLER BALL, Incl Nut & Lockwasher	1
3	40-58	MAIN PIVOT BEARING	1	21	416-06	TRAILER HITCH BRACKET ASSEMBLY	1
4	404-66	PIVOT BEARING	1	22	117-29	LOCKNUT, 3/8-16	2
5	404-54	MAIN PIVOT BEARING SEAL	1	23	108-15	WASHER, 3/8"	2
6	475-01	BUSHING, 13/16x20	1	24	473-22	HHCS, 3/8-16x4 1/2"	2
7	478-14	WASHER, 7/8 x 1 3/8 x 3/32"	1	25	40-00	TRANSMISSION, see group (1.0 Transmission)	1
8	473-21	PIVOT BEARING BOLT, 7/8-14x3", special	1	26	40-62	REAR AXLE SLINGER	1
9	453-01	REAR SHOCK	1	27	40-41	REAR HUB ASSEMBLY, Incl ref #28	2
10	487-02	LOCKNUT, M10x1.5	1	28	473-06	WHEEL STUD, 1/2-20. see ref #27, 4 per.	8
11	473-01	HHCS, M10x1.5x60mm lg.	1	29	425-01	TIRE & RIM ASSEMBLY, Incl ref #30,31,32	2
12	473-02	HHCS, M10x1.5-85mm lg.	1	30	125-26	VALVE STEM, see ref #29	1
13	478-13	LOCKWASHER, 10mm, Din 127	1	31	425-03	RIM, 12x9, steel, see ref #29	1
14	108-26	WASHER, 3/8"	2	32	425-02	TIRE, Turf Buster, 25-12x9", see ref #29	1
15	117-15	HEX NUT, 3/8-16	1	33	487-03	WHEEL NUT, 1/2-20	8
16	108-06	LOCKWASHER, 3/8"	1	34	478-12	WASHER, 3/4"	2
17	486-19	RUBBER BUMP STOP	1	35	487-06	HEX SLOTTED NUT, 3/4-16	2
18	40-61	BRAKE COVER SLINGER	1	36	481-02	COTTER PIN, 5/32x1 1/2"	2
				37	402-09	VENT HOSE	1

### 3.0 Throttle & Engine

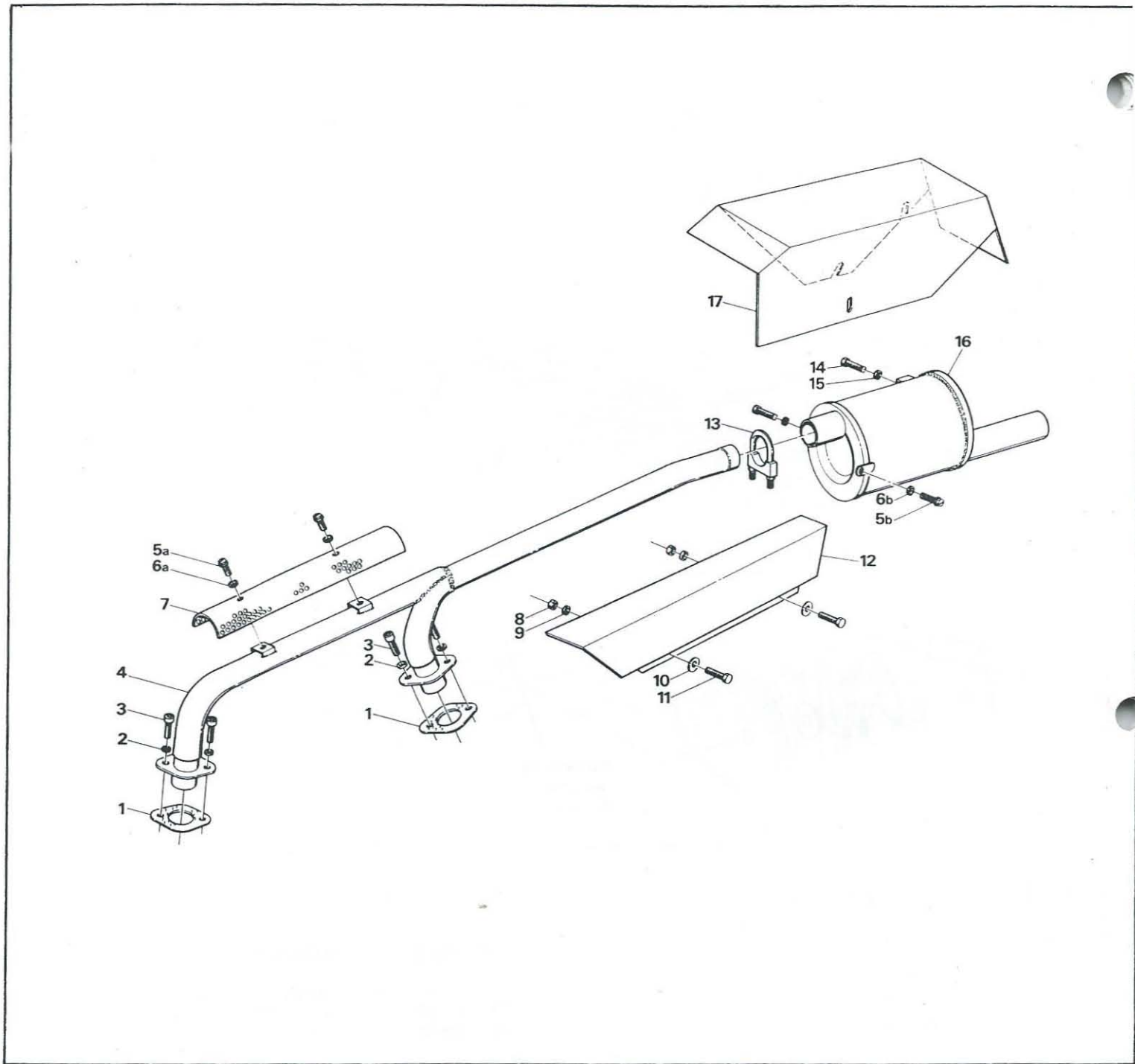


### 3.0 Throttle & Engine

Ref#	Part #	Description	Qty	Ref#	Part #	Description	Qty
1	412-05	THROTTLE	1	18	271271	* FOAM PRE-CLEANER, see ref #14	1
2	412-17	THROTTLE BOOT	1	19	394018	* PAPER FILTER, see ref #14	1
3	412-03	GRIP, RH.	1	20	488-18	T-TAP CONNECTER, see ref #14 and group (15.0 Electrical System)	1
4	412-06	GRIP, LH.	1	21	93496	* SCREW, #10-32x5/8", see ref #14	2
5	412-31	INNER THROTTLE CABLE	1	22	610-70	THROTTLE CABLE CLIP, see ref #14	2
6	412-32	OUTER THROTTLE CABLE	1	23	610-71	THROTTLE SPRING HOOK, see ref #14	2
7	103-47	SCREW, #10-24x1/2", see ref #14	2	24	125-88	THROTTLE RETURN SPRING, see ref #14	1
8	125-48	HOSE CLIP, 1/2" ID.	2	25	103-48	SELF TAP SCREW, #10x3/4. see ref #14	1
9	103-57	HHCS, 5/16-18x1 1/2"	4	26	222923	* THROTTLE RESTRICTOR, see ref #14	1
10	108-24	WASHER, 5/16"	8	27	231339	* CARB JET, see ref #14	1
11	117-21	LOCKNUT, 5/16-18	4	28	125-64	FUEL FILTER, see ref #14, see also group (14.0 Fuel System)	1
12	403-05	COOLING HOSE CUFF	2	29	100-70	GEAR CLAMP	1
13	403-04	COOLING HOSE	1	30	69532	ROPE START, see ref #14	1
14	410-12	BRIGGS & STRATTON ENGINE, 656cc, model 402437, Incl ref #7,8,16, to 28,30	1				
15	126-30	SPARK PLUG, Champion RJ-12, see ref #14	2				
16	486-04	GROMMET, see ref #14	1				
17	407-05	GASKET, see ref #14, also group (4.0 Exhaust System)	2				

\* Briggs & Stratton part number. These parts also available at B & S Service Dealers.

## 4.0 Exhaust System

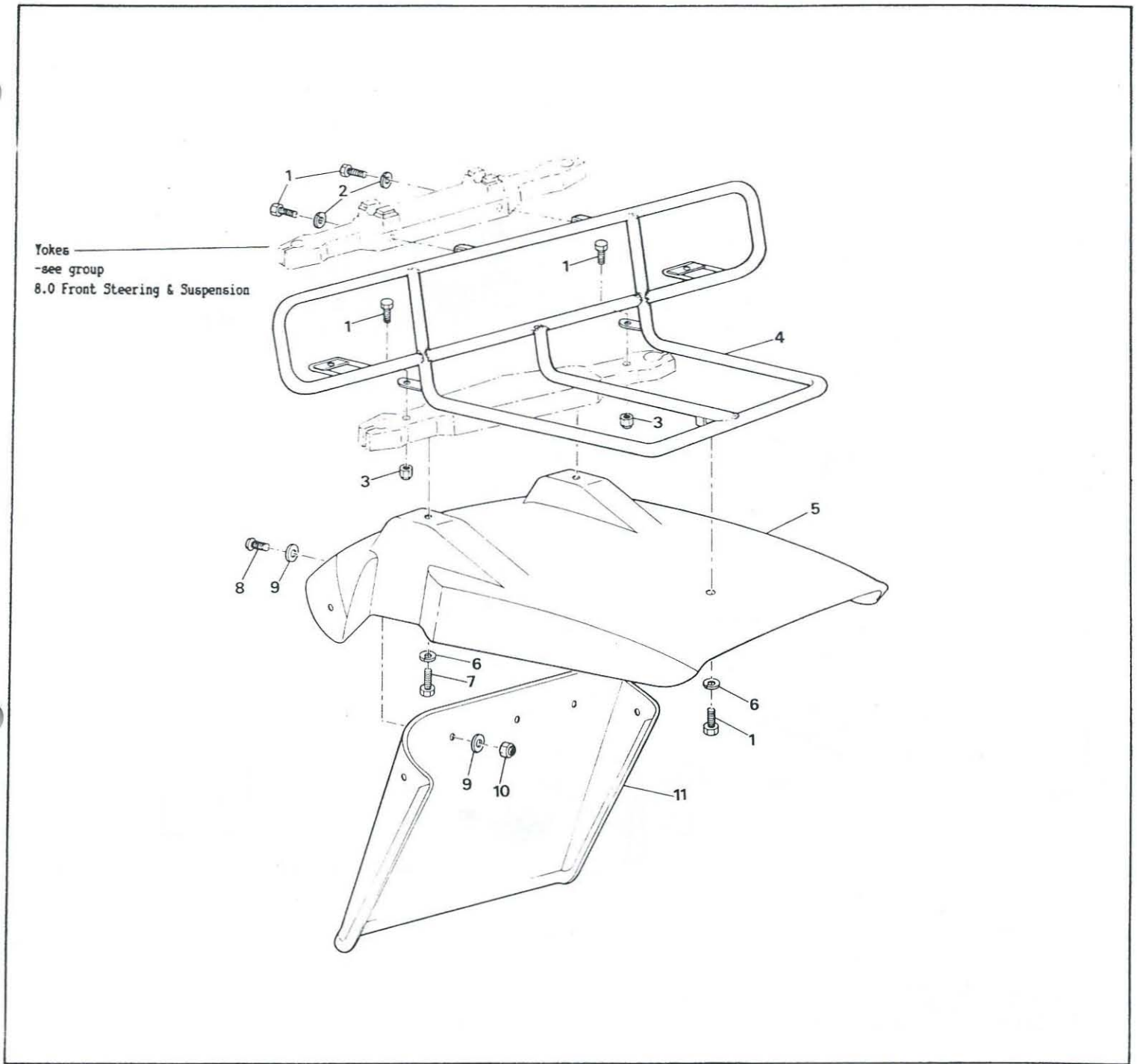


## 4.0 Exhaust System

Ref#	Part #	Description	Qty	Ref#	Part #	Description	Qty
1	407-05	GASKET, see also group (3.0 Throttle & Engine)	2	8	117-20	HEX NUT, 1/4-20	2
2	478-10	H.C. LOCKWASHER 1/4"	4	9	108-03	LOCKWASHER, 1/4"	2
3	473-26	SHCS, 1/4-20x3/4"	4	10	478-08	PLATE WASHER, 1/4"	2
4	407-11	MANIFOLD PIPE ASSEMBLY	1	11	473-09	HHCS, 1/4-20x3/4"	2
5a	103-11	HHCS, 1/4-20x1/2"	2	12	407-12	HEAT SHIELD; body	1
5b	103-11	HHCS, 1/4-20x1/2"	1	13	100-98	MUFFLER CLAMP, 1 1/2"ID.	1
6a	108-08	WASHER, 1/4"	2	14	103-06	HHCS, 5/16-18x1"	2
6b	108-08	WASHER, 1/4"	1	15	108-05	LOCKWASHER, 5/16"	2
7	407-13	MANIFOLD HEAT SHIELD, screen	1	16	407-10	MUFFLER	1
				17	407-08	HEAT SHIELD, muffler	1



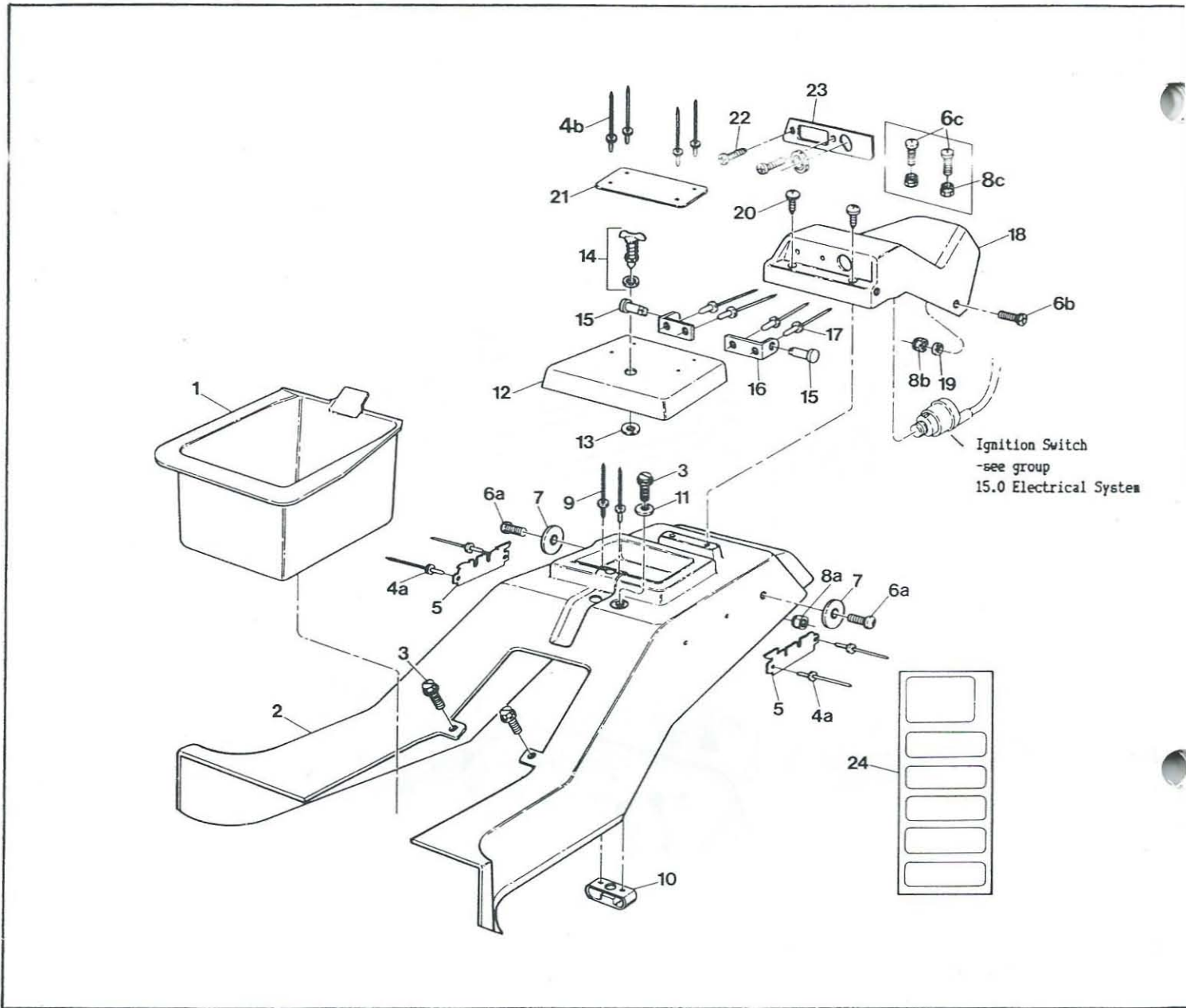
## 5.0 Front Fender & Rack



## 5.0 Front Fender & Rack

Ref#	Part #	Description	Qty	Ref#	Part #	Description	Qty
1	473-09	HHCS, 1/4-20x3/4"	5	7	103-08	HHCS, 1/4-20x1"	2
2	108-03	LOCKWASHER, 1/4"	2	8	103-25	PAN HD, PHILLIPS SCREW, #10-24x 3/4"	5
3	117-27	LOCKNUT, 1/4-20	2	9	120-05	SPACER, 3/16"	10
4	405-10	FRONT RACK ASS'Y	1	10	117-10	LOCKNUTS, #10-24	5
5	401-01	FRONT FENDER, specify colour	1	11	401-03	FRONT MUD FLAP	1
6	108-08	WASHER, 1/4"	3				

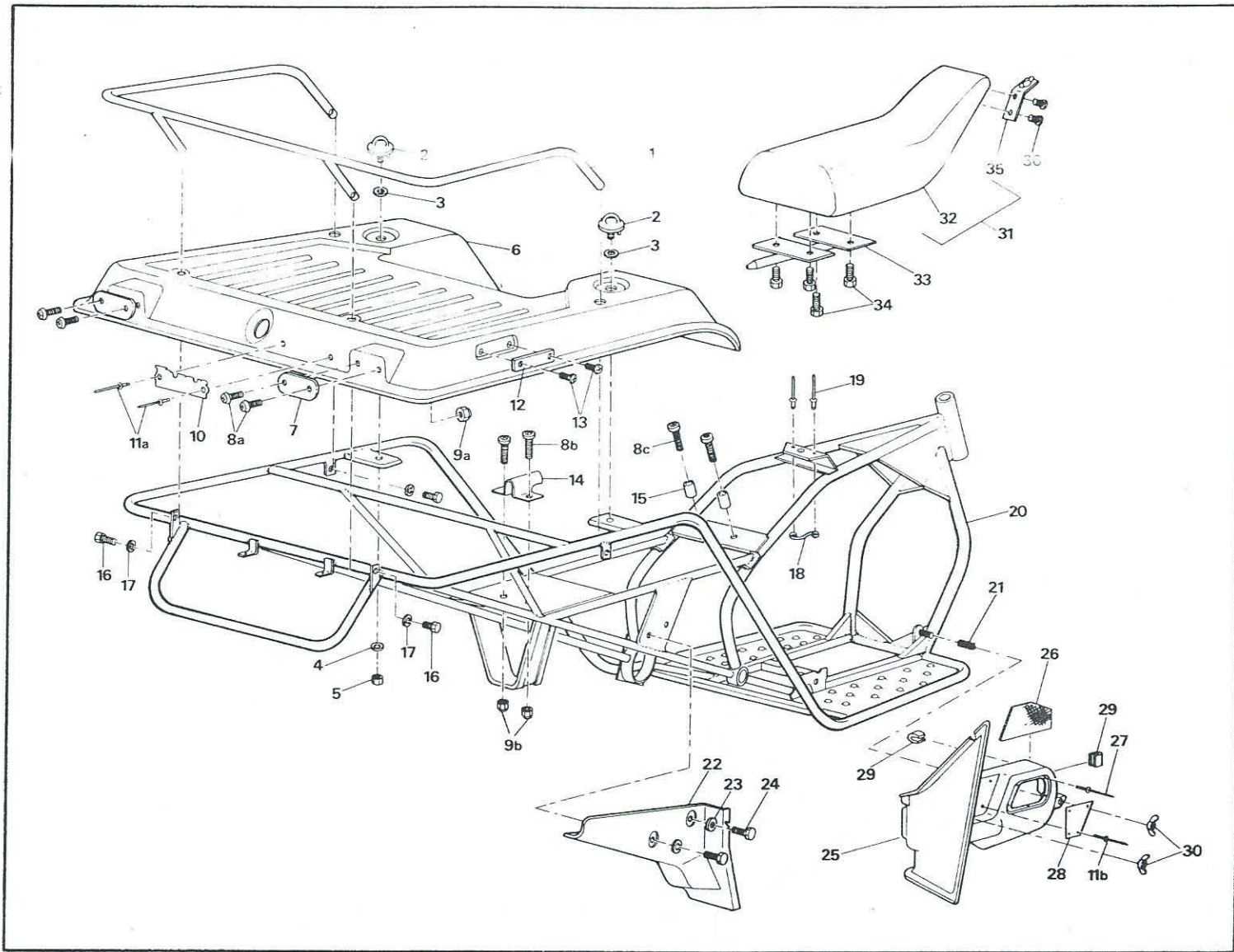
# 6.0 Front Body



## 6.0 Front Body

Ref#	Part #	Description	Qty	Ref#	Part #	Description	Qty
1	401-05	TOOL BOX	1	10	486-16	RECEPTACLE, plastic	1
2	401-04	SEAT SUPPORT, specify colour	1	11	108-08	WASHER, 1/4"	1
3	103-11	HWHCS, 1/4-20x1/2"	3	12	401-13	GLOVE BOX COVER	1
4a	120-24	RIVETS, #34	4	13	486-17	STUD RETAINER	1
4b	120-24	RIVETS, #34	4	14	486-14	WING STUD, plastic	1
5	401-35	TAURUS NAME PLATE	2	15	486-18	PUSH RIVET, plastic, black	2
6a	103-25	PAN HD PHILLIPS SCREW, #10-24x3/4"	2	16	401-14	GLOVE BOX COVER HINGE	2
6b	103-25	PAN HD PHILLIPS SCREW, #10-24x3/4"	2	17	120-13	RIVET, #56	4
6c	103-25	PAN HD PHILLIPS SCREW, #10-24x3/4" to 3W0208	2	18	401-12	INSTRUMENT POD	1
7	401-28	YELLOW REFLECTOR	2	19	120-05	SPACER, 3/16"	2
8a	117-10	LOCKNUT, #10-24	2	20	103-48	SELF TAP SCREW, #10x3/4", from 3W0209	2
8b	117-10	LOCKNUT, #10-24	2	21	401-38	IMPORTANT PLATE	1
8c	117-10	LOCKNUT, #10-24, to 3W0208	2	22	473-34	PAN. HD. PHILLIPS SCREW, #8x3/8"	2
9	120-15	RIVET #45	2	23	401-40	INSTRUMENT POD FACEPLATE	1
				24	401-36	WARNING DECALS, sheet of 6	1

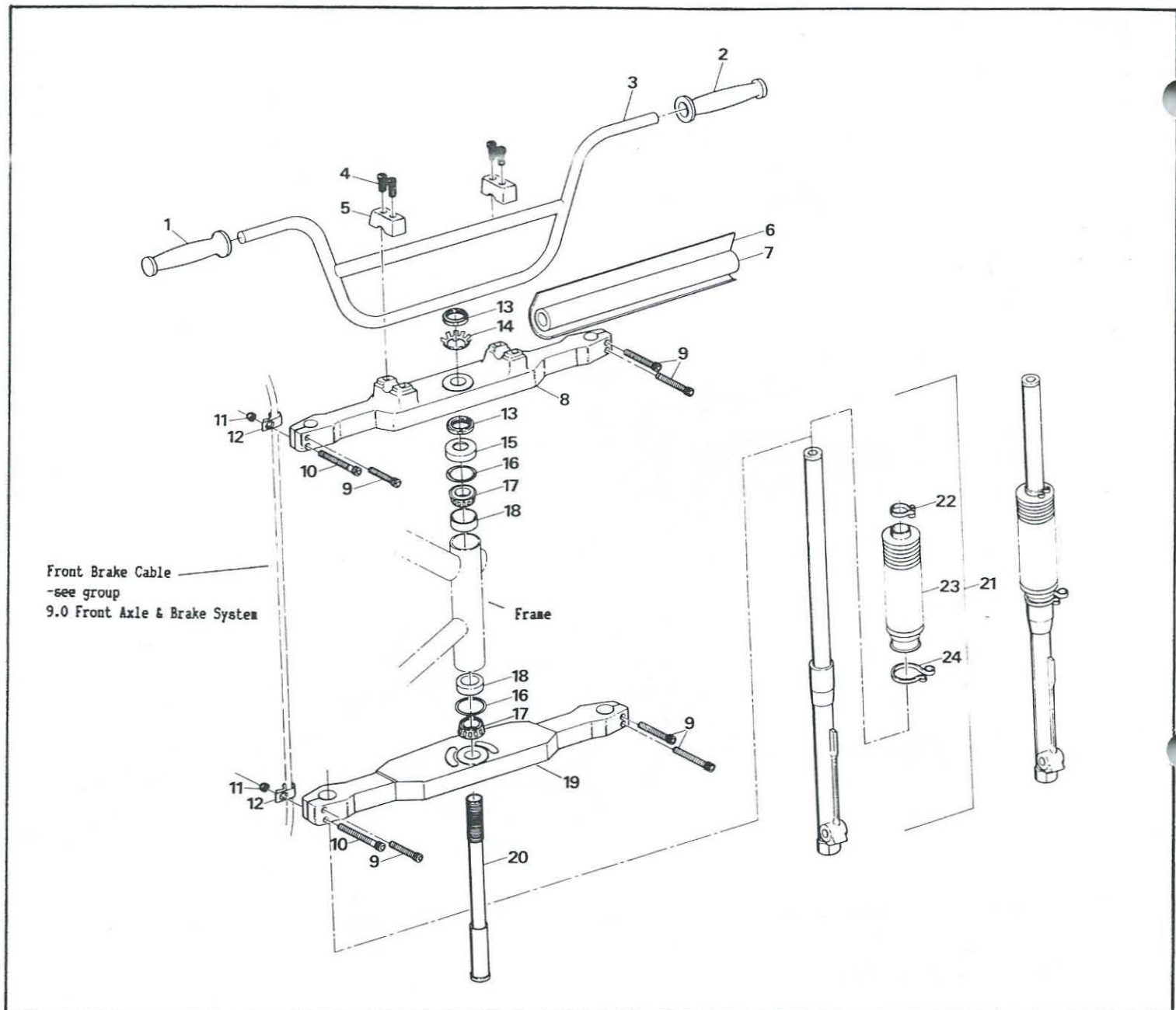
## 7.0 Rear Body & Frame



## 7.0 Rear Body & Frame

Ref#	Part #	Description	Qty	Ref#	Part #	Description	Qty
1	405-01	REAR RACK, Incl threaded inserts	1	18	126-11	SEAT LOCATION SPRING, S7-275, to 3W0263	1
2	405-06	TIE DOWN ASSEMBLY	2	18	126-16	SEAT LOCATION SPRING, S7-225, from 3W0264	1
3	108-26	FLATWASHER, 3/8"	2	19	120-15	RIVET, #45	2
4	108-06	LOCKWASHER, 3/8"	2	20	401-01	FRAME ASSEMBLY	1
5	117-15	HEX NUT, 3/8-16	7	21	486-27	SPRING, 1" lg	1
6	401-06	REAR DECK, specify colour	1	22	401-23	SPLASH GUARD, RH., plastic	1
7	401-27	RED REFLECTOR, rear	2	23	108-08	WASHER, 1/4"	2
8a	103-25	PAN. HD. PHILLIPS SCREW, #10-24x 3/4"	4	24	103-72	HW THREAD CUTTING SCREW, 1/4-20x3/4"	2
8b	103-25	PAN. HD. PHILLIPS SCREW, #10-24x 3/4"	2	25	401-18	ENGINE INTAKE COVER	1
8c	103-25	PAN. HD. PHILLIPS SCREW, #10-24x 3/4"	2	26	401-19	ENGINE COOLING AIR SCREEN	1
9a	117-10	LOCKNUT, #10-24	4	27	120-22	RIVET, #43	7
9b	117-10	LOCKNUT, #10-24	2	28	401-34	GEAR CHANGE PLATE	1
10	401-35	TAURUS NAME PLATE	1	29	486-28	SEALING STRIP, sponge rubber	2
11a	120-24	RIVETS, #34	2	30	487-12	WING NUT, 1/4-20	2
11b	120-24	RIVETS, #34	4	31	408-04	SEAT ASS'Y, Incl ref #32	1
12	401-15	RED REFLECTOR, side	2	32	408-03	VINYL SEAT COVERING, see ref #31	1
13	103-48	SELF TAP SCREW, #10 x 3/4"	4	33	408-05	SEAT LOCATION PIN ASS'Y	1
14	602-04	SEAT LOCATION PLATE	1	34	103-11	HWCS, 1/4-20x1/2"	4
15	401-29	RUBBER BUMPER	2	35	408-07	FRONT SEAT CATCH, Incl Grommet & Wing Stud	1
16	103-08	HHCS, 1/4-20x1"	4	36	103-73	PHILLIPS HD. SCREW, 1/4-20x3/4"	2
17	108-03	LOCKWASHER, 1/4"	4				

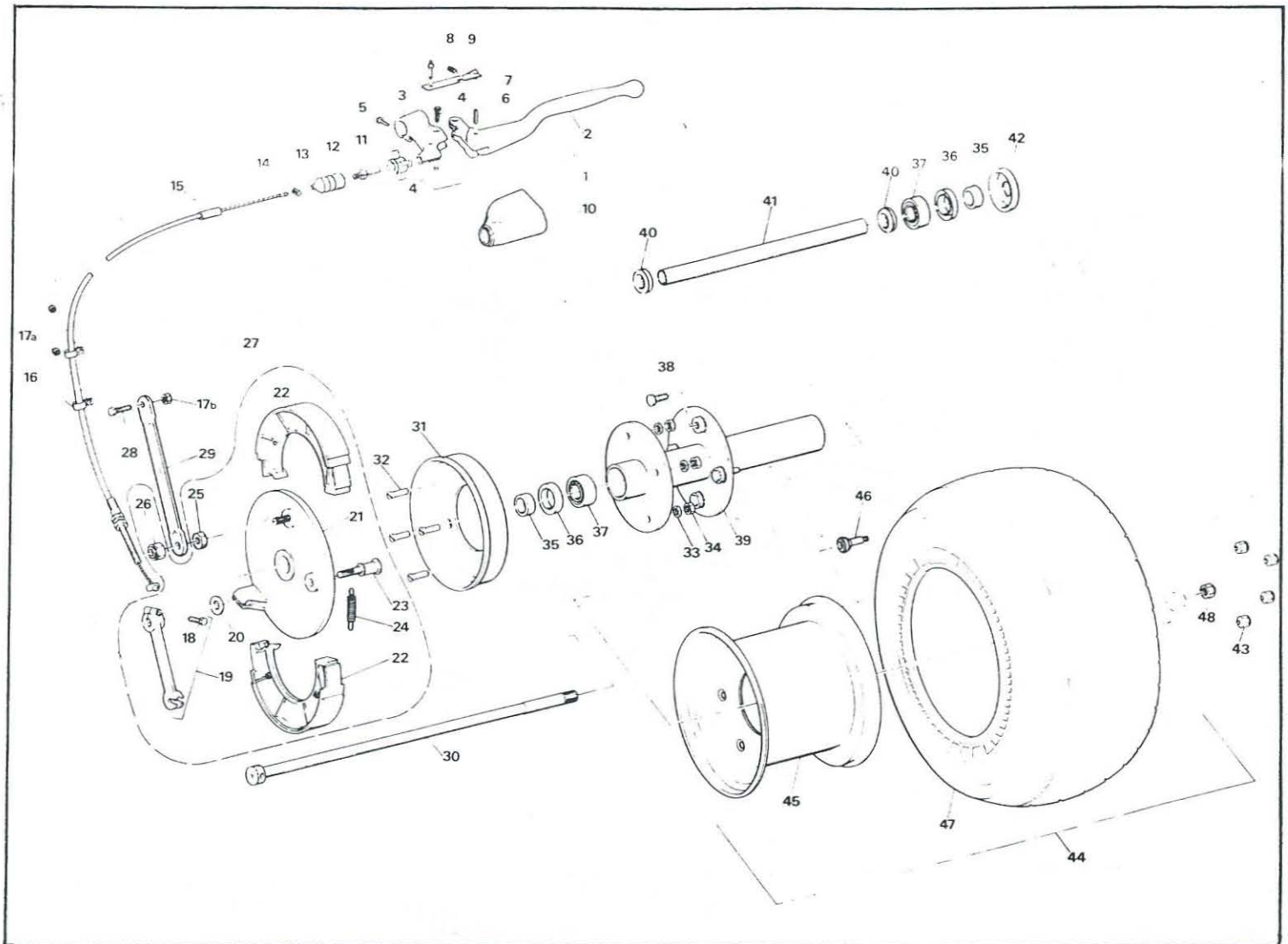
## 8.0 Front Steering & Suspension



## 8.0 Front Steering & Suspension

Ref#	Part #	Description	Qty	Ref#	Part #	Description	Qty
1	412-03	GRIP, RH,	1	13	487-10	BEARING LOCKNUT, AN-05	2
2	412-06	GRIP, LH,	1	14	478-06	BEARING LOCKWASHER, AW-05	1
3	412-01	HANDLE BAR ASS'Y	1	15	412-08	DUST COVER	1
4	473-25	SHCS, 1/4-20x1 1/2"	4	16	483-03	O-RING, #224	2
5	412-04	HANDLE BAR CLAMP	2	17	471-15	TAPERED ROLLER BEARING, #L44643	2
6	412-30	HANDLE BAR COVER, vinyl	1	18	471-16	ROLLER BEARING CONE, #L44610	2
7	412-20	HANDLE BAR FOAM	1	19	412-11	LOWER FORK YOKE	1
8	412-10	UPPER FORK YOKE	1	20	412-09	STEERING HEAD AXLE	1
9	473-23	SHCS, 5/16-18x1 1/4"	6	21	414-01	FRONT FORK, Incl ref #22,23,24	2
10	473-31	SHCS, 5/16-18x2"	2	22	414-03	STOP RING, small, see ref #21	1
11	117-21	LOCKNUT, 5/16-18	2	23	414-02	BLACK BOOT, see ref #21	1
12	486-22	WIRE CLAMP, 3/8"	2	24	414-04	STOP RING, large, see ref #21	1

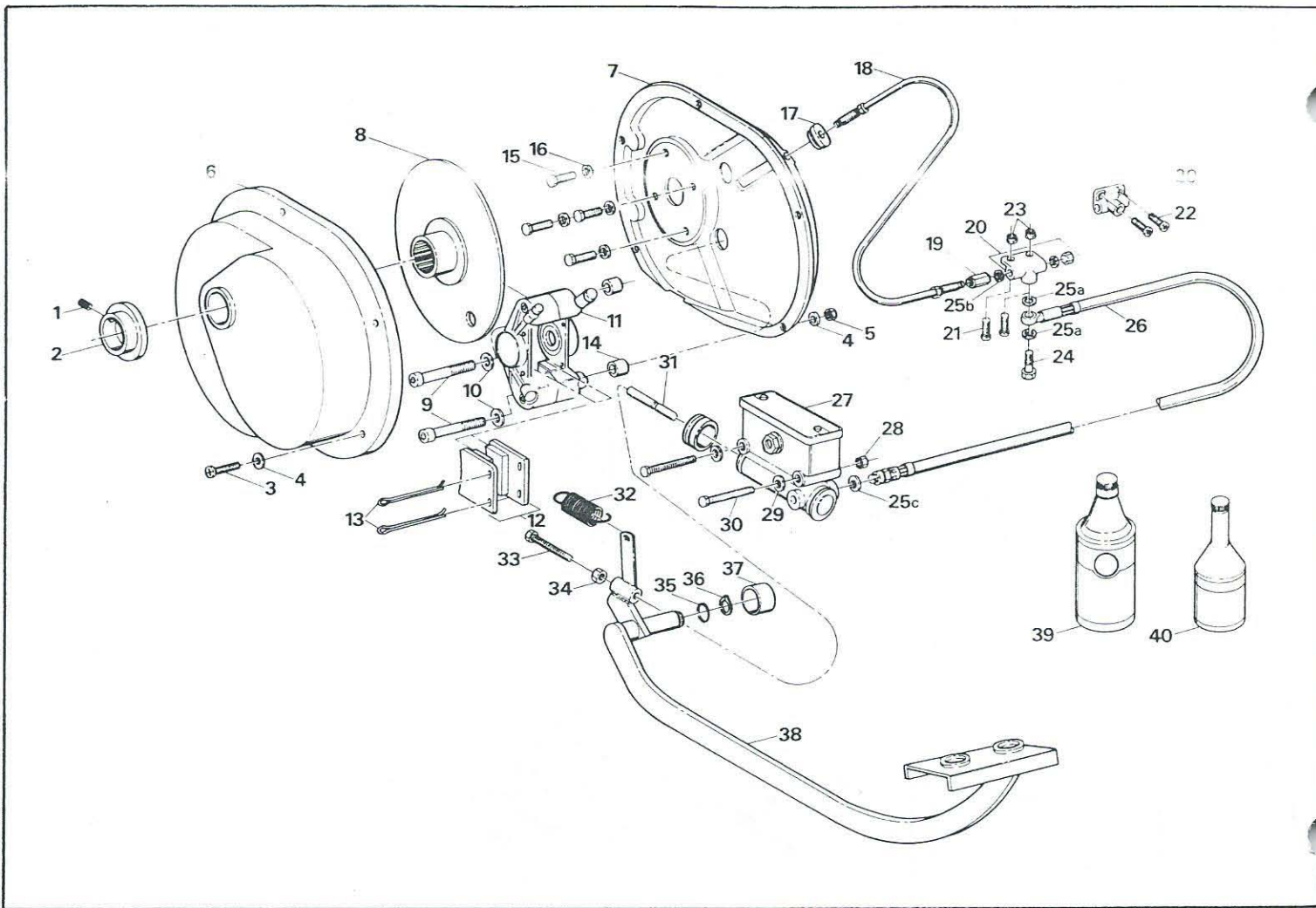
## 9.0 Front Axle & Brake System



## 9.0 Front Axle & Brake System

Ref#	Part #	Description	Qty	Ref#	Part #	Description	Qty
1	412-02	BRAKE LEVER ASS'Y, Incl ref #2 to 9	1	24	AS	SPRINGS, set of 2, see ref # 22, 27	
2	412-12	BRAKE LEVER ARM, see ref #1	1	25	487-07	JAM NUT, M10x1.5, see ref# 27	1
3	412-13	BRAKE LEVER BODY, see ref #1	1	26	487-08	ESMA NUT, M10x1.5, see ref #27	1
4	412-22/23	SCREW & NUT, M6x1, see ref# 1	1	27	454-02	BACKING PLATE ASS'Y, Incl ref #18 to 26	1
5	412-29	PAN HD SCREW, M6x1x15mm lg, see ref# 1	1	28	103-06	HHCS, 5/16-18x1"	1
6	111-01	SPIROL PIN, 5/32x1", see ref #1	1	29	454-03	TORQUE ARM	1
7	412-16	LOCKING LEVER, see ref# 1	1	30	406-07	FRONT AXLE SHAFT	1
8	412-14	PIVOT PIN, see ref# 1	1	31	454-01	BRAKE DRUM	1
9	126-26	EXTENSION SPRING, see ref# 1	1	32	473-08	FSHMS, 5/16-24x1	4
10	412-24	RUBBER BOOT	1	33	108-05	LOCKWASHER, 5/16"	4
11	412-27	ADJUSTER, plastic	1	34	487-09	HEX NUT, 5/16-24	4
12	412-26	ADJUSTING NIPPLE & COLLAR	1	35	406-03	SPACER RING	2
13	412-25	RUBBER BELLOW	1	36	472-03	OIL SEAL, 30x47x7 mm	2
14	454-16	BARREL FITTING	1	37	471-04	BEARING, #6303	2
15	454-04	BRAKE CABLE	1	38	473-06	WHEEL STUD, 1/2-20, see ref #39	4
16	486-22	WIRE CLAMP, 3/8"	2	39	406-04	AXLE HOUSING ASS'Y, Incl ref #38	1
17a	117-21	LOCKNUT, 5/16-18	2	40	486-03	GROMMET, rubber	2
17b	117-21	HEX NUT, 5/16-18	1	41	406-08	SPACER TUBE	1
18		HHCS, M6, see ref #19, 27	1	42	406-02	DUST SHIELD	1
19	454-11	BRAKE ARM, Incl ref #18, see ref #27	1	43	487-03	WHEEL NUT, 1/2-20	4
20	478-16	WASHER, see ref #27	1	44	425-01	TIRE & RIM ASS'Y, Incl ref #45, 46, 47	1
21		BACKING PLATE, see ref #27	1	45	425-03	RIM, 12x9", steel, see ref #44	1
22	454-14	AS BRAKE SHOES, set of 2, Incl ref #24, see ref #27	1	46	125-26	VALVE STEM, see ref #44	1
23	454-12	PIN, see ref #27	1	47	425-02	TIRE, Turf Buster, 25-12x9, see ref #44	1
				48	487-01	LOCKNUT, 5/8-18	1

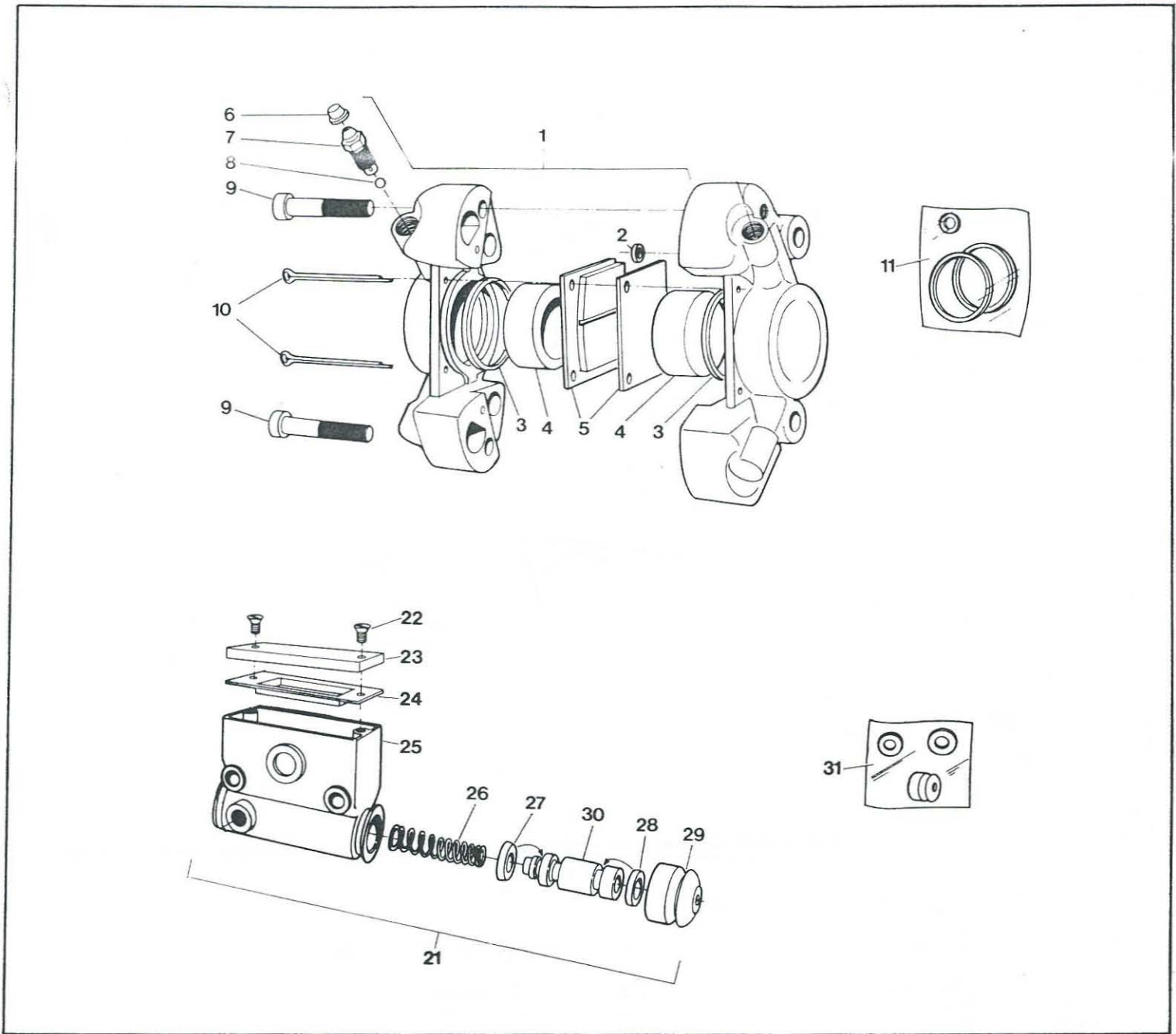
# 10.0 Rear Brake System



# 10.0 Rear Brake System

Ref#	Part #	Description	Qty	Ref#	Part #	Description	Qty
1	615-04	SET SCREW, #10-32x3/16"	1	22	473-35	SHCS, #10-24x5/8", from 3W0342	2
2	40-61	BRAKE COVER SLINGER	1	23	117-10	LOCKNUT, #10-24, to 3W0341	2
3	103-25	PAN HD, PHILIPS SCREW, #10-24x3/4"	5	24	160-44	BANJO BOLT	1
4	120-05	WASHER, #10	10	25a	160-01	COPPER WASHER	2
5	117-10	LOCKNUT, #10-24	5	25b	160-01	COPPER WASHER	1
6	401-09	BRAKE COVER OUTER, black plastic	1	25c	160-01	COPPER WASHER	1
7	401-10	BRAKE COVER INNER, black plastic	1	26	455-07	HYDRAULIC HOSE	1
8	40-22	BRAKE DISC	1	27	410-04	MASTER CYLINDER, see also group (11.0 Hydraulic Brake Components)	1
9	473-27	SHCS, 3/8-16x1 3/4"	2	28	117-27	LOCKNUT, 1/4-20	2
10	108-23	WASHER, 3/8", special	2	29	108-08	WASHER, 1/4"	2
11	455-21	BRAKE CALIPER, Incl ref #12, 13, see also group (11.0 Hydraulic Brake Components)	1	30	473-19	HHCS, 1/4-20x2 1/2"	2
12	170-01	BRAKE PAD, set of 2, see ref #11		31	455-17	MASTER CYLINDER PIN	1
13	168-06	COTTER PIN, 3x55mm, see ref #11	2	32	125-61	RETURN SPRING	1
14	455-09	CALIPER SPACER	2	33	455-15	ADJUSTING BOLT, 3/8-16x2	1
15	473-09	HHCS, 1/4-20x3/4"	4	34	117-15	HEX NUT, 3/8-16	1
16	478-08	PLATE WASHER, 1/4"	4	35	483-04	O-RING, #015	1
17	455-12	GROMMET	1	36	476-07	SNAP RING, N14000068	1
18	455-06	BRAKE LINE, Steel	1	37	455-11	CAP PLUG, #14, plastic	1
19	455-18	FITTING ADAPTER, to 3W0384	1	38	455-10	REAR BRAKE PEDAL ASS'Y	1
20	455-08	T-FITTING, to 3W0384	1	39	126-14	HYDRAULIC SILICONE BRAKE FLUID, Dot 5, 1 qt.	
20	455-20	T-FITTING, from 3W0385	1	40	126-19	HYDRAULIC SILICONE BRAKE FLUID, Dot 5, 500ml	
21	473-32	PAN HD, PHILIPS SCREW, #10-24x1", to 3W0341	2				

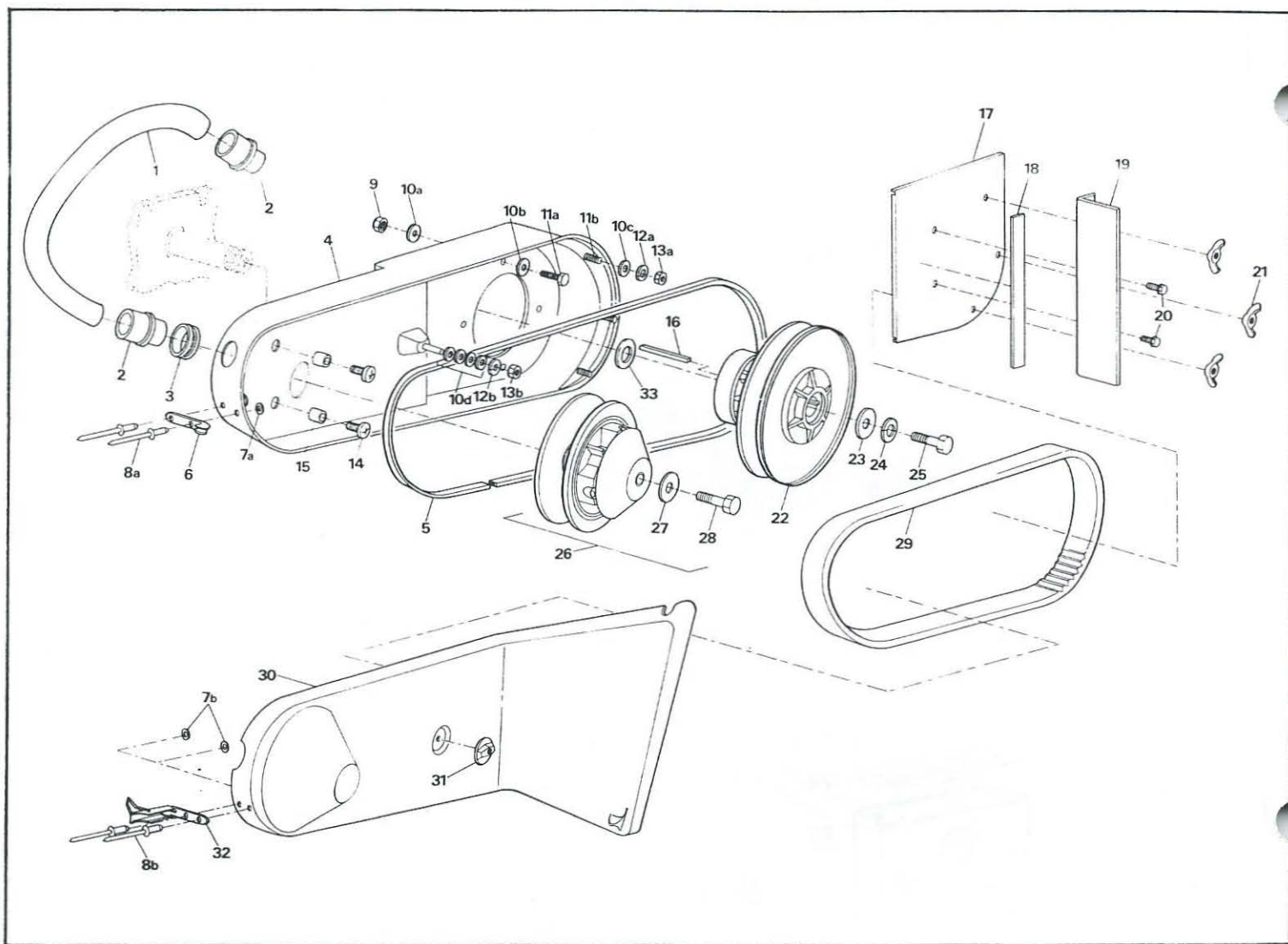
# 11.0 Hydraulic Brake Components



## 11.0 Hydraulic Brake Components

Ref#	Part #	Description	Qty	Ref#	Part #	Description	Qty
1	455-21	HYDRAULIC BRAKE CALIPER, Incl ref #2 to 10	1	21	410-04	MASTER CYLINDER, Incl ref #22 to 30	1
2		RUBBER SEAL, 5 mm ID, use ref #11 Kit	1	22	160-42	SCREW, M5x.8x6	2
3		PISTON SEAL, 41 mm ID, use ref #11 Kit	2	23	168-08	COVER, aluminum	1
4	168-05	PISTON, 41 mm dia.	2	24	168-09	COVER, rubber	1
5	170-01	AS BRAKE PAD SET, set of 2		25	NA	HYDRAULIC RESERVOIR, aluminum, use ref #21	1
6	168-20	RUBBER PLUG	1	26	162-02	MASTER CYLINDER RETURN SPRING	1
7	168-03	BLEEDING SCREW, M10x1	1	27		PRIMARY SEAL, 19mm OD, use ref #32 kit	1
8	168-04	CHECK BALL	1	28		SECONDARY SEAL, 19mm OD, use ref #32 kit	1
9	160-41	SHCS, M10x1.5x50mm	2	29	168-11	BOOT, rubber, or use ref #32 kit	1
10	168-06	COTTER PIN, 3x55mm	2	30	168-10	PISTON, 19 mm Dia.	1
11	161-01	BRAKE CALIPER O-RING KIT, Incl ref #2, 3		31	161-25	MASTER CYLINDER O-RING KIT, Incl ref #27, 28, 29	1

## 12.0 Torque Converter System

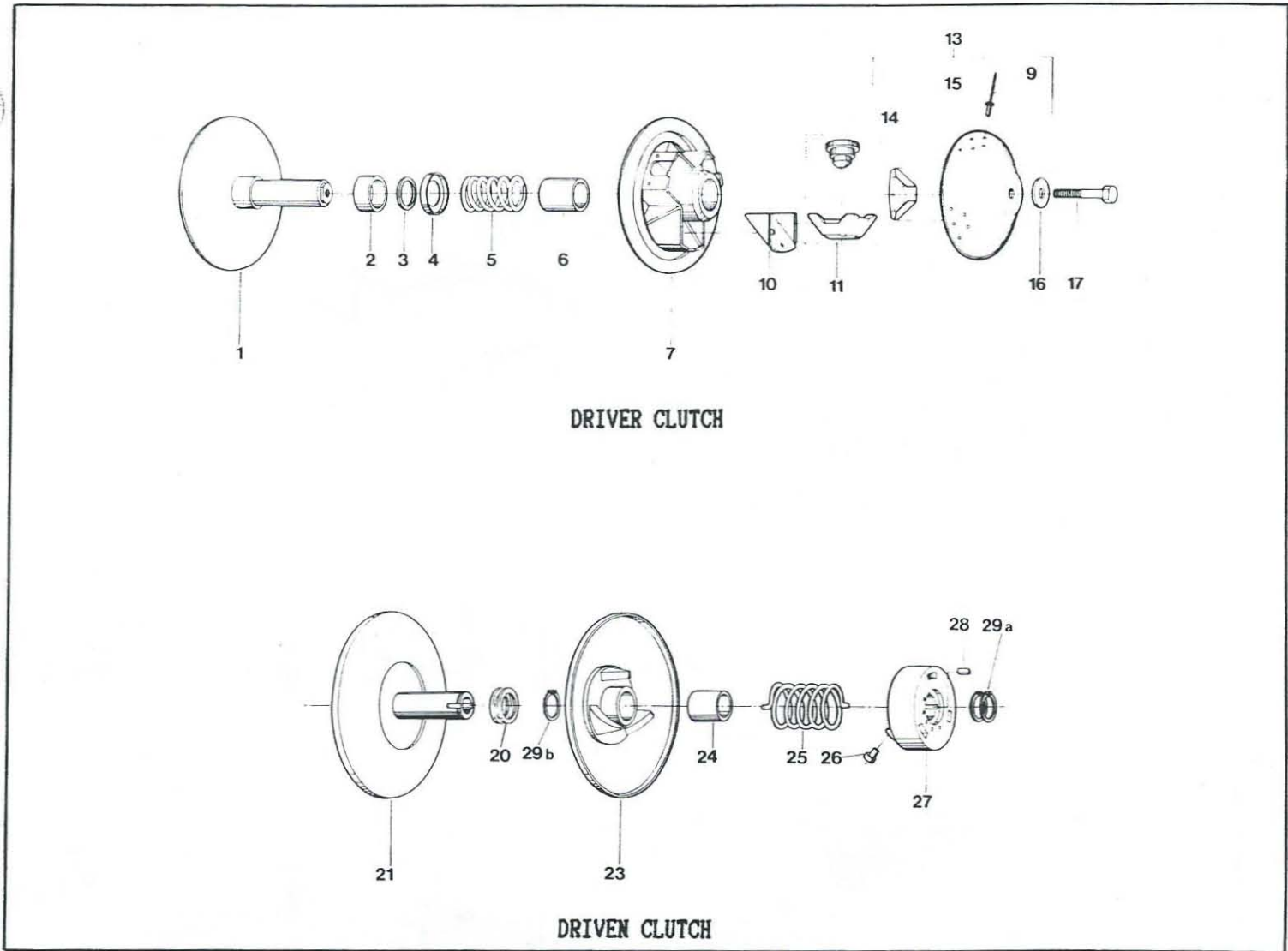


## 12.0 Torque Converter System

Ref#	Part #	Description	Qty	Ref#	Part #	Description	Qty
1	403-04	COOLING HOSE	1	15	486-13	SPACER, 3/8 ID.x1/2 OD.x3/16" lg	2
2	403-05	COOLING HOSE CUFF	2	16	110-09	KEY, 1/4x1/4x3"	1
3	486-24	GROMMET	1	17	403-02	COVER PLATE, steel	1
4	403-01	TORQUE CONVERTER INNER COVER, FRP	1	18	403-07	SEALING STRIP, flat sponge	1
5	403-06	SEALING STRIP, U-channel	1	19	403-08	MUD SHIELD, steel	1
6	403-10	STRIKE LATCH	1	20	103-11	HHCS, 1/4-20x1/2"	2
7a	120-19	SPACER, 1/8"	2	21	487-12	WING NUT, 1/4-20	3
7b	120-19	SPACER, 1/8"	2	22	125-80	DRIVEN CLUTCH, #FC-1000-250-AR, see group (13.0 Clutches - Power Bloc)	1
8a	120-15	RIVET, #45	2	23	108-18	WASHER, 3/8"	1
8b	120-15	RIVET, #45	2	24	108-06	LOCKWASHER, 3/8"	1
9	117-27	LOCKNUT, 1/4-20	4	25	103-34	HHCS, 3/8-16x1 1/4"	1
10a	108-08	WASHER, 1/4"	4	26	410-03	DRIVER CLUTCH, Incl ref #27, 28, see group (13.0 Clutches - Power Bloc)	1
10b	108-08	WASHER, 1/4"	4	27	X-1250	FLATWASHER, 1/2", see ref #26	1
10c	108-08	WASHER, 1/4"	3	28	X-1351	BOLT, 1/2-14 UNSx1 1/4", see ref #26	1
10d	108-08	WASHER, 1/4"	4	29	125-56	DRIVE BELT	1
11a	103-08	HHCS, 1/4-20x1"	4	30	401-08	CLUTCH COVER, plastic	1
11b	103-08	HHCS, 1/4-20x1"	3	31	486-07	CLUTCH COVER KNOB	1
12a	108-03	LOCKWASHER, 1/4"	3	32	403-09	TOGGLE LATCH	1
12b	108-03	LOCKWASHER, 1/4"	1	33	108-36	WASHER, 1 1/32x1 3/8x.080" Thk., as req'd	1
13a	117-20	HEX NUT, 1/4-20	3				
13b	117-20	HEX NUT, 1/4-20	1				
14	473-29	TRUSS HD, PHILLIPS SCREW, 3/8-16x3/4"	2				



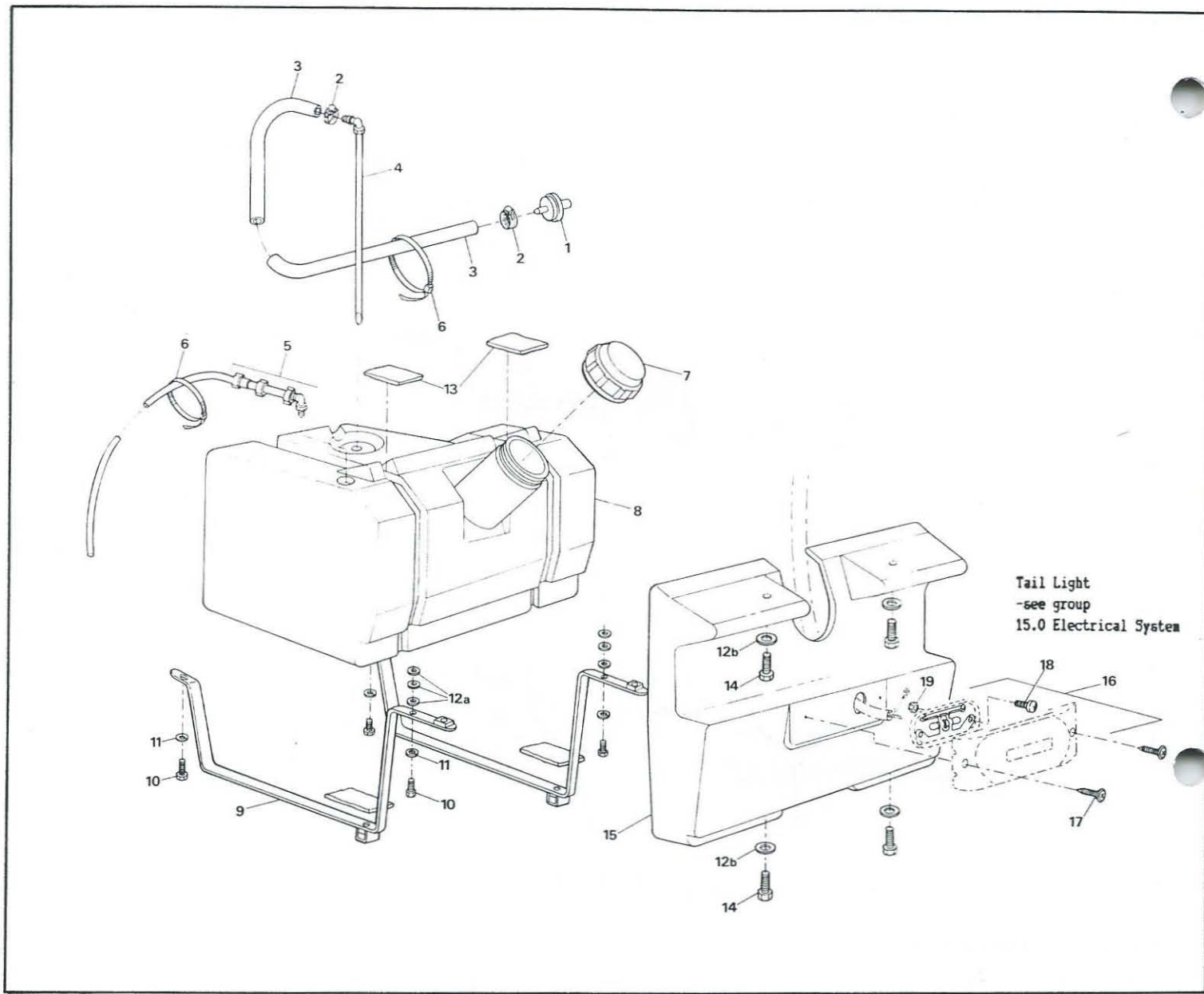
# 13.0 Clutches - Power Bloc



## 13.0 Clutches - Power Bloc

Ref#	Part #	Description	Qty	Ref#	Part #	Description	Qty
*	410-03	DRIVER CLUTCH, #ALT-5213-L, w/out guard	1	17	X-1351	BOLT, 1/2-14 UNS x 1 1/4"	1
1	A-152-13	FIXED PULLEY, threaded bore	1	*	125-80	DRIVEN CLUTCH, #FC-1000-AR	
2	X-28-104	IDLER BUSHING, 1 3/8x1 23/32x1" lg	1	20	ASA-1	BELT ADJUSTMENT SPACER, 1 1/2 IDx1 7/8 OD x.50" thk., use as required	5
3	X-31	BELT HEIGHT ADJUSTMENT SPACER	1	21	C-1100-AR	FIXED PULLEY	1
4	X-41	SPRING SHOULDER WASHER	1	23	C-7-AR	SLIDING CAM PULLEY, Incl ref# 24	1
5	X5218304	SPRING, grey, 3 1/4" lg	1	24	C-6	BUSHING	1
6	X-6B1-T	SLIDING TEFLON BUSHING	1	25	CCS-3-188	SPRING	1
7	A-61	SLIDING PULLEY	1	26	C-4	CAM SLIDER SHOE, nylon	3
9	A-6-P	POP RIVET, steel, #43, 1/8"	15	27	C-3	FIXED CAM	1
10	A-6-S	STEEL SLIDE FACE	3	28	C-2	SQUARE KEY, 1/4x1/4x3/4" lg	1
11	X-93 AS	SLIDING WEIGHT SET, Incl 3 weights & 3 plastic sliders		29a	C-1	SNAP RING, .05 Thk	2
13	A-1150	STEEL CONE CUP ASS'Y, Incl 9,14,15	1	29b	C-1	SNAP RING, .05 Thk,	1
14	A-11-W	SMALL WING, steel, see ref# 13	3				
15	A-1150-C	STEEL CONE CAP, only	1				
16	X-1250	FLATWASHER, 1/2 ID x 1 1/2 OD x 3/32" thk	1				

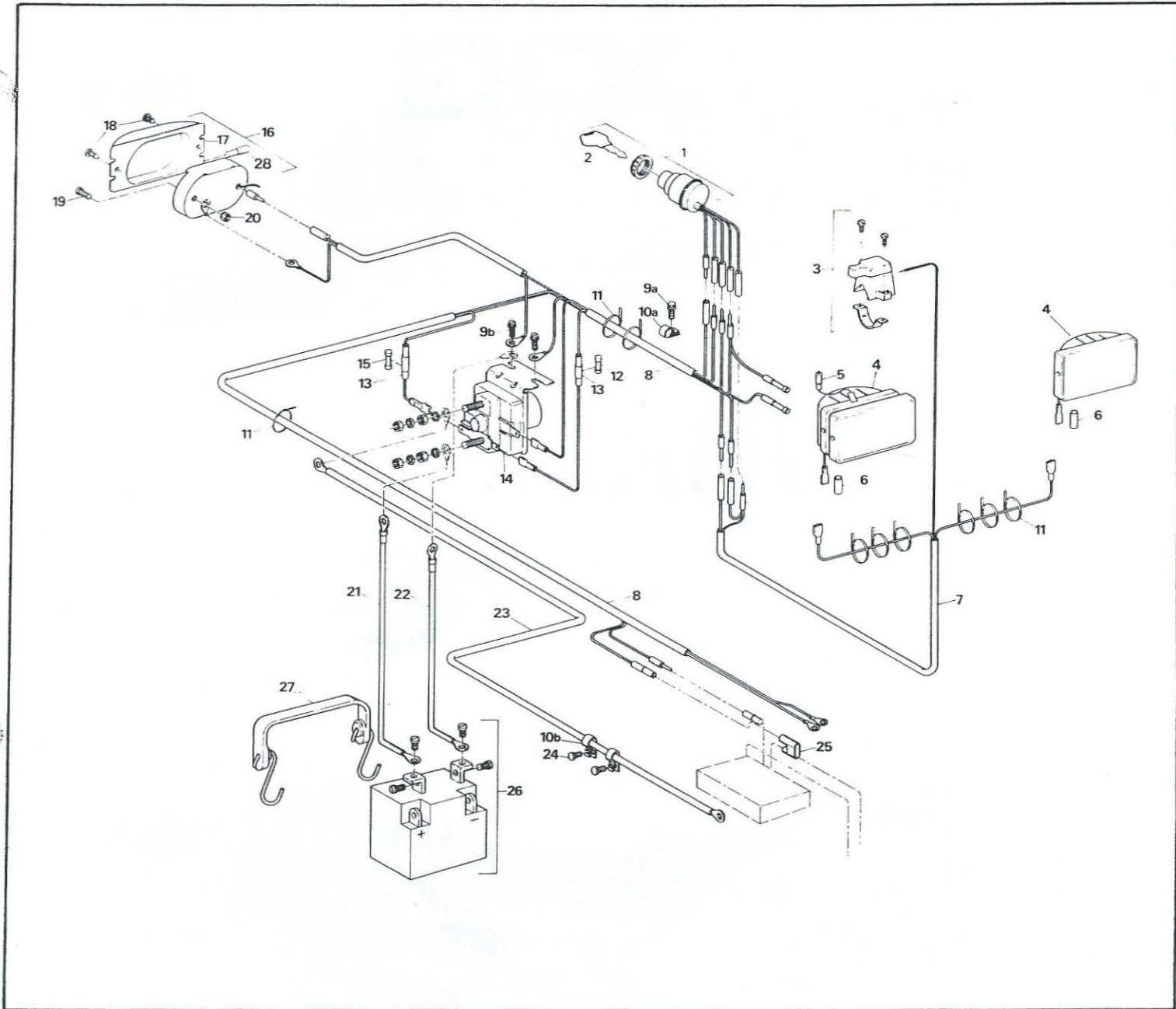
# 14.0 Fuel System



## 14.0 Fuel System

Ref#	Part #	Description	Qty	Ref#	Part #	Description	Qty
1	126-64	FUEL FILTER, see also group (3.0 Throttle & Engine)	1	13	702-06	FOAM CUSHION	8
2	100-70	GEAR CLAMP, 1/2"	2	14	473-09	HHCS, 1/4-20x3/4"	4
3	402-05	FUEL HOSE	1	15	401-22	TANK COVER, plastic, specify colour	1
4	402-10	PICK-UP PIPE ASS'Y	1	16		TAIL LIGHT ASS'Y, see group (15.0 Electrical System)	1
5	402-13	FUEL VENT ASS'Y	1	17	103-48	SELF TAP SCREWS, #10-3/4	2
6	100-64	TIE RAP, black	3	18	103-25	PAN HD PHILLIPS SCREW, #10-24x3/4"	1
7	402-02	GAS CAP, non vented	1	19	117-10	LOCKNUT, #10-24	1
8	402-01	FUEL TANK, 5 gal. Imp., 6 gal. US, (22.7 L)	1				
9	402-03	FUEL TANK STRAP	2				
10	103-08	HHCS, 1/4-20x1"	4				
11	108-03	LOCKWASHER, 1/4"	4				
12a	108-08	FLATWASHER, 1/4", as req'd	6				
12b	108-08	FLATWASHER, 1/4"	4				

# 15.0 Electrical System



## 15.0 Electrical System

Ref#	Part #	Description	Qty	Ref#	Part #	Description	Qty
1	100-60	IGNITION SWITCH, incl ref# 2	1	14	100-36	STARTER RELAY	1
2	100-60A	IGNITION KEY, #11, used on ref# 1	1	15	488-21	FUSE, 25 Amp, see ref# 8	1
3	488-05	KILL SWITCH	1	16	624-02	TAIL LIGHT ASSEMBLY, Incl ref# 17, 28	1
4	488-01	HEADLIGHT, Incl ref# 5	2	17	624-03	TAIL LIGHT LENSE, see ref# 16	1
5	488-34	HEADLIGHT BULB, H3 Halogen, 12V, 55 Watt, see ref# 4	1	18	103-48	SELF TAP SCREWS, #10x5/8"	2
6	488-33	HEAT SHRINK TUBE, 3" lg	2	19	103-25	PAN HD PHILLIPS SCREW, #10-24x3/4"	1
7	413-05	HEADLIGHT/HANDLEBAR HARNESS	1	20	117-10	LOCKNUT, #10-24	1
8	413-01	MAIN WIRING HARNESS, Incl ref# 12,13,15	1	21	413-06	MAIN POWER CABLE	1
9a	103-70	HWH THREAD CUT SCREW, 1/4-20x1/2"	1	22	413-07	MAIN GROUND CABLE, 14"	1
9b	103-70	HWH THREAD CUT SCREW, 1/4-20x1/2"	2	23	413-08	STARTER CABLE, 19"	1
10a	125-48	HOSE CLIP, 1/2" ID.	1	24	103-47	SCREW, #10-24x1/2"	2
10b	125-48	HOSE CLIP, 1/2" ID.	2	25	488-18	T-TAP CONNECTOR, see also group (3.0 Throttle & Engine)	1
11	100-64	TIE RAP, black	14	26	488-07	BATTERY, 12V-12 Ampere Hours, 120 Amps	1
12	488-20	FUSE, 15 Amp, see ref# 8	1	27	413-03	BATTERY STRAP, c/w hooks	1
13	613-12	FUSE HOLDER, see ref# 8	2	28	NA	TAIL LIGHT BULB, W-1893, see ref# 16	2

# ODG

## Ontario Drive & Gear Limited

Box 280, Bleams Road  
New Hamburg, Ontario, Canada N0B 2G0  
Phone: (519) 662-2840