

MAY 2026

Celebrating our Speech Language Pathologists

Let them know how much they are appreciated.

CURRENT EVENTS AND UPDATES

- May is Speech and Hearing month

- Exciting things are happening at Tots to Teens! Check us out on Facebook and Instagram to stay connected.



Thank you SLPS

May is National Speech-Language-Hearing Month, and we're proud to celebrate the incredible work of speech-language pathologists, dedicated to helping our kiddos communicate more effectively.

Communication is at the heart of learning, connection, and growth. Whether it's helping a child find their first words, identifying hearing challenges early, or supporting recovery.

This month, Give your therapist a little love for their expertise, compassion, and dedication to empowering voices of all kinds. Thank you for making a difference — one word, one sound, one connection at a time.

Tots Award Winner

For April, Kayla has been nominated as our Tots Award Winner. She consistently goes above and beyond! She always brings a positive attitude to work everyday and is always smiling. She creates a welcoming environment for both staff and families.

She handles the front desk responsibilities and interactions with clients' families with patience and grace. She accepts feedback from families with professionalism and composure. Her ability to stay positive while managing all of the responsibilities truly makes a difference in our workplace. Kayla is truly one of a kind!



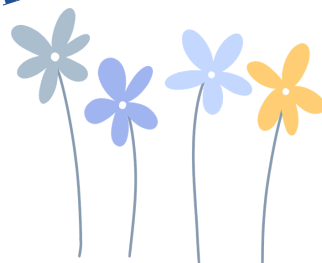
APP TIP

**YOU CAN
RESCHEDULE
APPOINTMENTS
RIGHT IN THE APP!**



Open Ocean Friends App > Appointment tab

Looking for a fun Spring activity



SPRING SENSORY BINS:
[HTTPS://LITTLEBINSFORLITTLEHANDS.COM/SPRING-SENSORY-BIN/](https://LITTLEBINSFORLITTLEHANDS.COM/SPRING-SENSORY-BIN/)



SIGNS YOUR CHILD MAY NEED

SPEECH THERAPY

LIMITED
VOCABULARY

DIFFICULTY WITH
PRONUNCIATION

DIFFICULTY FORMING
SOUNDS

TROUBLE WITH
GRAMMAR

STUTTERING

DIFFICULTY
UNDERSTANDING
LANGUAGE



SIGNS YOUR CHILD MAY NEED

FEEDING THERAPY

DIFFICULTY IN
BREASTFEEDING OR
BOTTLE FEEDING

PICKY EATING OR
REFUSING TO TRY
NEW FOODS

GAGGING OR
CHOKING DURING
MEALS

DIFFICULTY IN
CHEWING OR
SWALLOWING

ONLY 4-6 FOODS

ONLY EATS ONE TYPE
OF TEXTURE



Tots to Teens
therapy services

VIRTUAL CAREGIVER SUPPORT GROUP

Topic: Sensory Friendly Events

We are a safe, understanding space to share experiences, encourage and connect with others. All parents and caregivers are welcome.

- ✓ Meet other parents
- ✓ Get your questions answered
- ✓ Discuss important information

To Register contact
authorizations@totstoteenstherapy.com



WEDNESDAY
27
MAY
10AM TO 11AM





Tots to Teens
therapy services

Clinic Holiday Closures - Please mark your Calendars

- **MEMORIAL DAY -MONDAY, MAY 25**
- **INDEPENDENCE DAY - FRIDAY, JULY 3**
- **LABOR DAY- MONDAY SEPTEMBER 7**
- **THANKSGIVING HOLIDAYS-THURSDAY, NOVEMBER 26 AND FRIDAY, NOVEMBER 27**
- **WINTER HOLIDAY- THURSDAY, DECEMBER 24 AND FRIDAY, DECEMBER 25**

Kayla's Korner

- As a reminder, please use ocean friends to cancel and reschedule sessions as needed.

Check your Insurance Benefit Coverage

- Notify billing asap of any change in insurance, policy carrier etc
- Remember new year means most plans deductible reset, oftentimes co pays may go up
- Always read your policy, or call your carrier to confirm coverage

