



The Circuit Rider



Salmon Creek

United Methodist Church

MAY
2026



He has made everything
beautiful In its time.
Ecclesiastes 3:11

[Pastor's Page—2-4](#)

[Tentative Calendar—5](#)

[Church Finance Status—6](#)

[Family Promise—7](#)

[Peace Pole Prayer Sundays—8](#)

[Creation Care/Accessibility Team—9](#)

[Women Rise Up Tea—10](#)

[Prayer Vigil—11](#)

[Membership Class—12](#)

[Music Ministries Spring Concert—13](#)

[Creation Care Corner—14, 15](#)

[We Compost—16, 17](#)

[God's Garden—18](#)

[Congregational Care—19](#)

[Share Opportunities/Gaiser—20, 21](#)

[VBS—22, 23](#)

[Pay It Forward—24](#)

[Tanner Banners—25, 26](#)

[Earth Day—27—29](#)

[Puzzle Time—30](#)

[Easter Flower Cross—31](#)

[Holy Week Stations of the Cross—32—36](#)

[A Caring Closet—37](#)

[Family Birthdays—38](#)

[A 90th birthday—39](#)



Knowing That Voice



Matthew 22:37-40

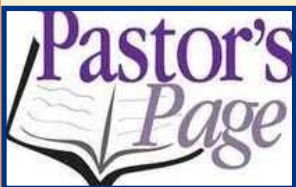
“You shall love the Lord your God with all your heart, and with all your soul, and with all your mind.” This is the greatest and first commandment. And a second is like it: “You shall love your neighbor as yourself.” On these two commandments hang all the law and the prophets.

Dear friends and families of Salmon Creek United Methodist Church,

In light of the current state of our world, I want to share some thoughts with you today that some of you may not agree with. Please know that as your pastor, I love you, and respect your right to disagree. If these ideas are new to you and you want to know more, or if you would like to have more conversation, please know I am happy to visit with you. Hopefully sharing these thoughts will help you better understand the lens through which I see the world and aim to live my faith in the world.

With all that said, I would like to consider the question of the categories sacred and secular. How do we decide what is sacred and what is secular? When is a concern about our faith vs. about our politics? How do we know where the lines are?

The short answer for me is that everything is sacred. The idea that we can separate life and the world God created into the two categories secular and sacred is, in my understanding, a human-made false dichotomy. If we believe God created all things, the world and all living creatures, then everything is sacred.



The same is true to a degree with the idea that we can somehow separate faith and politics into two different boxes. Political decisions shape how we, as people of faith, care for one another, for the vulnerable, for the stranger, and for all of God's creation. Political decisions should be informed by our faith.

Rev. Steve Manskar, writing for Discipleship Ministries on *The General Rule of Discipleship (To witness to Jesus Christ in the world, and to follow his teachings through acts of compassion, justice, worship, and devotion under the guidance of the Holy Spirit.)* explains how this rule of discipleship helps followers live as witnesses to Jesus Christ in the world as they follow his teachings. Manskar cites the Matthew 22 passage at the beginning of this message, along with others, as he reminds us, *"Jesus said to his disciples, "If you love me, you will keep my commandments" (John 14:15) and "You are my friends if you do what I command you" (John 15:14).* The Christian life is shaped by obedience to Jesus' teachings.

Political decisions have human consequences, budgets are moral documents, and our life as followers of Jesus Christ cannot be artificially segregated from our life in the world. Yet, this does not mean we, as followers of Jesus, will agree on everything or make the same political decisions. Good people of faith can and do have different opinions and make different political decisions because each of us are also informed by the lenses through which we see and experience life.

If you were worshiping with us in October of 2024, you may remember a worship series that we did called, *Do Unto Others*. Throughout the series, we were reminded that people are more alike than we are different. We were reminded to treat one another the way we would want to be treated, with *kindness, compassion, humility, respect, and love*. As we considered treating one another with respect despite our differences, we heard these words from Worship Design Studio writer, Rev. Ben A. David Hensley asking, *"Is it possible that a part of the root cause of our division these days comes from us being unable to recognize and respect that each of us carries different burdens, different responsibilities, and different stories with us? It can be so easy to misunderstand when we interpret what someone says or does through the lens of our story, rather than being curious about the lens they carry from their story.*

As we continue to navigate this complicated and divisive time in our country and world, it is my prayer that we will move forward with grace for one another, guided by the power of the Holy Spirit. And from this place of Spirit-led grace, may we have the courage to speak and listen to one another, as together, we discern how we can faithfully follow Jesus one day at a time through this messy, sacred, political, life of faith we have been given.

Peace and hope,

Kim

Rev. Kim Poer

“Anything that’s human is mentionable, and anything that is mentionable can be more manageable. When we can talk about our feelings, they become less overwhelming, less upsetting, and less scary. The people we trust with that important talk can help us know that we are not alone.”

— Fred Rogers

TENTATIVE UPCOMING EVENTS

May

- 3—Peace Pole Prayer—9:45 am
- 5 - COM and Ad Board meetings
- 8 - Creation Care Meeting
- 10 – Mother’s Day
- 12 – Missions meeting
- 14 – Trustees and SPRC meetings
- 15 - Prayer Vigil
- 17— Membership Class
- 24 – Pentecost
- 25 – Memorial Day
- 26 – Finance meeting

DATES TO REMEMBER

June

- 2 – AD Board meeting
- 7 – Church picnic
- 9 – Missions meeting
- 11 – Trustees and SPRC meetings
- 14 – Church Picnic
- 21 – Father’s Day
- 23 – Finance meeting
- 23 – 25 Annual Conference

July

- 4 – Independence Day
- 7 – COM meeting (NO Ad Board meeting)
- 7-10 – VBS
- 9 – Trustees and SPRC meetings
- 14 – Missions meeting
- 19 – Church without Walls
- 28 – Finance meeting

March, 2026 Financial Update

Following is the financial report for the Church for March, 2026.

	Month			Year to Date		
	Actual	Budget	Fav/(Unfav)	Actual	Budget	Fav/(Unfav)
Income	6,507	29,767	(23,260)	124,682	89,300	35,382
Expenses	33,633	30,946	(2,687)	100,269	100,438	170
Operating Income / (Loss)	(27,126)	(1,179)	(25,947)	24,413	(11,138)	35,552

The extremely low income figure for March deserves further explanation, and the chart below details the main components of revenue for the Church.

	Month			Year to Date		
	Actual	Budget	Fav/(Unfav)	Actual	Budget	Fav/(Unfav)
Pledges	20,253	27,500	(7,247)	129,728	82,500	47,228
Other Income	2,206	2,267	(61)	6,754	6,800	(46)
Investments	(15,952)	0	(15,952)	(11,800)	0	(11,800)
Total Income	6,507	29,767	(23,260)	124,682	89,300	35,382

Our pledge income dropped significantly in March, after two very strong months in January and February, with only 74 % of Budget. With the Dow Jones Index dropping nearly 8 % in March, due primarily to uncertainty in current global geopolitical issues, we incurred investment losses of ~ (16,000) as shown above. YTD pledge income continued to be strong through March at 157 % of Budget, and ~ 47,000 Favorable to Plan. Our expenses were very close to Budget for both March and Year to Date, with variances of (2,686) and 170, respectively.

With the losses in March, our YTD profit for the Church dropped to ~24,000 and ~ 35,000 favorable to our Budget. Due to the Q1 traditional anomaly with pledge income, we will continue to closely monitor our income levels. In a repeat comment, your commitment to our Church and our Community remains steadfast and we appreciate everyone's generosity.

With respect to our Preschool program, we still continue to operate at a loss as we strive to add more students. Our YTD loss was (5,790), but was favorable to our Budget by ~ 2,300. We have had some new enrollees recently, but will only continue the Preschool program if we can continue to increase our enrollment figures.

Thank you to everyone for your contributions of time, talent and financial resources as we continue to worship together as disciples of Jesus Christ, united in missions, fellowship and service.

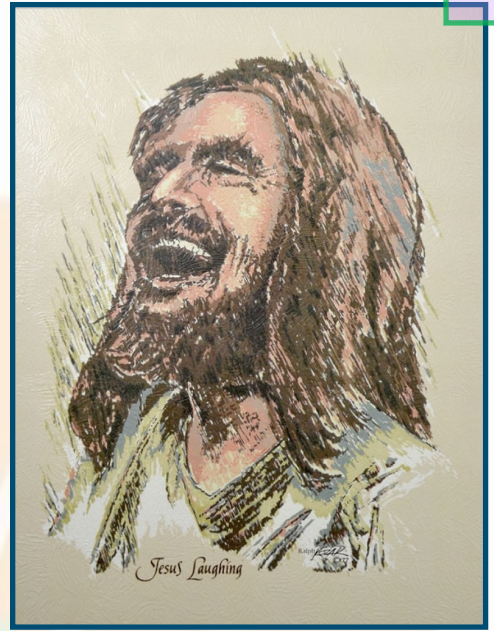
If you have any questions, please contact me or any member of the Finance Committee.

Respectfully Submitted,

Winston Asai Chair – Finance Committee

CHURCH
FINANCES





**Thank you to all who signed up to
serve during our April 26th
through May 6th
hosting week!**

Next 2026 HOSTING:

August 9—16th

December 6—13th

[https://www.signupgenius.com/
go/5080C4EABAD2EA3FB6-63050512-
copy/128297889#/
/](https://www.signupgenius.com/go/5080C4EABAD2EA3FB6-63050512-copy/128297889#/)

Praying for



PEACE



Beginning May 3rd, every first Sunday of the month, we will meet at the Peace Pole at 9:45 a.m. to pray together for our world.

Join us at the peace pole on every first Sunday at 9:45 a.m.

May 3 begins our joining in unity and hope to pray for a more compassionate and peaceful world!



May Peace



Prevail on Earth!

CREATION CARE

**Creation Care Task Force:
Next meeting May 8th,
in the Work Room at 9:00 am**

Is one of these important ministries calling you? Talk with Lila DeBolt or Pastor Kim for more information!

Accessibility Task Force:

Next meeting TBD



WOMEN RISE UP

You are invited to a *“Women Rise Up”* Tea
A Tea to Empower!

Hosted by Vancouver Heights United Women in Faith
Saturday, May 9, 2026

1 p.m. - 3 p.m.

Vancouver Heights United Methodist Church
5701 MacArthur Blvd., Vancouver, WA 98661

Come build connections with other women of faith and hear from women who have a passion for advocacy and serving those on the margins. Speakers include Tanisha Harris, SW Washington rep for Senator Maria Cantwell, Karen Harris, and Darla Golphenee.

New (or gently used) shoes and socks will be collected for Evergreen Schools, and items for Bags of Basics for houseless youth in SW Washington will be gathered. Items needed for the bags include shampoos, conditioners, body wash, deodorant, and cup of noodles. The Assistance League of SW Washington is gathering and collating donations for the bags.

Please RSVP to Deb Avery by Tuesday, May 5, at 360-281-0766.

Salmon Creek UMC Pioneer Chapel

An Hour of Prayer for Social Justice



May 13 at 2:00 p.m.
12217 NE Hwy 99, Vancouver, WA

**NEW**

Members Class

Find Out More About Our Church

NEW MEMBER CLASS

Are you new to SCUMC or the United Methodist Church in general? Do you know about the Methodists' view on membership? Are you interested in knowing more about the responsibility and privilege of church membership? Do you have questions about our personal church history? Do you wish to know the steps in becoming a member? If you answered "Yes" to any of these questions, then plan now to attend a **New Membership Class on Sunday, May 17** following the morning service. Pastor Kim will be leading an informational meeting where you can learn and ask questions about membership to SCUMC. There is no obligation to join or commit – just an informal time to listen, learn and ask. The meeting will be in the S. Paul Room. So, after the service, grab your coffee and pastry and join in to know more about our church. Becoming a member is a deeply personal commitment that gives back so much faith-filled joy. Our church will only move forward into the future with the backing and service from our many dedicated members. Is this your time to make that commitment? If you plan to attend, please inform Pastor Kim, Nancy in the office, or Lila DeBolt. For more information, don't hesitate to reach out.



MUSIC MINISTRIES SPRING CONCERT!

Come and enjoy music from our Choir, our Bell Choir, our Praise Team, and some special guests!

**Pentecost Sunday—May 24th, during worship
“Worship Through Music”**

CREATION CARE CORNER



This month's Creation Care Corner is a refresher on the R – R – R logo == REUSE, RECYCLE, REDUCE. The concept of reducing waste, reusing materials, and recycling has roots that extend back centuries, but the modern slogan “Reduce, Reuse, Recycle” gained prominence in the 1970s. This period was marked by heightened awareness of environmental issues, largely influenced by the Vietnam war protests and need for sustainable practices. Senator Gaylord Nelson of Wisconsin played a pivotal role in the movement by organizing the first Earth Day on April 22, 1970, which saw participation from nearly 20 million Americans advocating for environmental protection.

Following the success of Earth Day, the U.S. government took significant steps to address environmental concerns. The EPA – Environmental Protection Agency – was established in 1970 and the Resource Conservation and Recovery Act was passed in 1976, which aimed to promote recycling and waste management practices. These legislative actions laid the groundwork for the widespread adoption of the “Three R's” as a framework for environmental sustainability.

Today, the “Reduce, Reuse, Recycle” mantra continues to resonate globally, reminding individuals and communities of the importance of sustainable practices in preserving the environment. The movement has not only influenced waste management policies, but has also inspired a broader cultural shift towards environmental consciousness and responsibility.

REDUCE – using fewer resources and generating less waste from the start. This involves being mindful of consumption, such as buying products with minimal packaging, avoiding single-use items, and using reusable containers like water bottles or coffee cups. Reducing consumption helps prevent unnecessary waste and lowers the environmental impact of production and disposal.

REUSE – finding ways to use items multiple times instead of discarding them. Examples include repurposing glass jars for storage, repairing clothes or electronics, donating items to charity, or using old cardboard for DIY projects. Reusing extends the life of products, saves money, and reduces the volume of waste sent to landfills.

RECYCLE – the process of collecting and processing materials such as paper, plastic, glass, and metal to create new products. Recycling gives items a second life and reduces the need for raw materials, though it requires energy and resources. It is considered the last step after reducing and reusing, as it addresses waste that cannot be avoided or reused.

Applying the 3 R's helps conserve natural resources, reduce landfill space, save energy, and lower greenhouse gas emissions. By prioritizing reduce first, then reuse, and finally recycle, individuals can make a significant positive impact on the environment and promote sustainable living for future generations.

The Creation Care Taskforce here at SCUMC is eager to make a difference by promoting various concepts to minimize the waste we generate. The We Compost campaign is proving to be very successful in its early stages. We already are needing a second bin to accumulate the food scraps brought in from the community! China dishes are being used in coffee fellowship to reduce the amount of waste. The recent potluck lunch used dishes instead of paper products. We are encouraging everyone to reduce the amount of waste you may generate at any of the many gatherings, meetings and functions held here on our campus. Bring your reusable water or coffee bottles to church. Leave the plastics at home – or better yet – don't buy them!!

Have you seen the new R – R – R signs around in the 2 buildings? They have been hung as reminders of our responsibility in eliminating and recycling waste. Look for them and take part in this endeavor.

Let's all work together to make a difference. When we are a team united by a great cause, we are **GREATER TOGETHER!**

“In the end, our society will be defined not only by what we create, but by what we refuse to destroy.”



Lila DeBolt
Creation Care
May, 2026



The "We Compost" Kick-off was a huge success! If you still need a composting bucket, there are extras in the Narthex bookcase.

Feel free to take one home.

A HUGE thank you to:

The Creation Care Team: Aileen Maddox, Lila DeBolt and Teresa Rivera for making all of this happen!!



SCUMC QUARTER 1, 2026**'WE COMPOST' REPORT**

Thank you to everyone who has begun contributing food scraps to the SCUMC We Compost carts!

During March 2026, SCUMC diverted a total of 370 lbs. of food scraps that were landfill bound. SCUMC had its kickoff on March 22 to highlight SCUMC's participation as a We Compost community hub in Clark County. The graph below shows a fantastic beginning response for SCUMC. In addition, all 18 community hubs diverted a total of 56,535 lbs. of food scraps during Quarter 1, 2026.

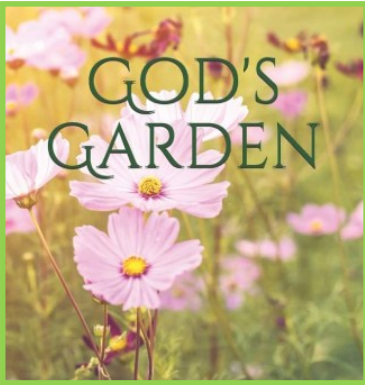
Keep up the good work promoting creation care at SCUMC!

Carts Location Change: To the right near the east parking lot median and fire hydrant.

Get your free We Compost food scraps bucket (bookcase near the SCUMC front door).

Questions? Ask the Creation Care Task Force (Lila DeBolt, Aileen Maddox, Teresa Rivera).

Total Cumulative Weight



God's Garden

God's Gardens have been completely rebuilt thanks to Boy Scout Zander Earl and the dozens of Scouts and Leaders from Troop 14 who helped him replace the gardens. The old wooden gardens were disintegrating so the Administrative Board allocated \$2000 for Zander to purchase aluminum/zinc garden frames two foot tall; each frame involved 88 nuts and bolts for assembly. The project was not approved by the Troop until Monday, March 16, but Zander was able to muster enough Scouts to start the project March 21. On such short notice he had 28 Scouts and adults show up to put the frames together, remove and cut up the old frames, move the garden dirt from each garden up to the side fence, level and place each new garden frame, place the frames two feet apart in perfect alignment, put the cutup old frames on the bottom of each garden for fill, haul wheelbarrow loads of bark chips down the steps and dump them in the gardens to a depth of six inches, then spread the remaining chips in the garden walkway areas. They did all of this work March 21.

He returned with fewer Scouts and adults on Saturday, March 28, to haul the dirt and fill each bed up to the 22 inch level. They used an end loader and trailer to haul dirt from the Salmon Creek Cemetery (a very large pile had accumulated over the years) to the parking lot by the gardens. Then Scouts and volunteers filled wheelbarrows, got them down the steps and shoveled the dirt into the beds. Yep, two times to shovel—once to load the wheelbarrow and once to shovel it out into the beds. Finally they topped each garden off with the garden soil that had been saved from each previous garden. They cleaned up the parking lot and left everything in pristine order. I have been involved with a lot of Eagle Scout projects but nothing comes close to amount of planning and work that went into God's Gardens. Zander showed outstanding leadership to plan, get support for, and carry out this massive project. Scout Sunday in April 26 so we will all have a chance to thank Zander and Troop 14 for the new gardens.

By the way we have several gardens which have not been spoken for this year. There is water available for watering and cleaning up and garden shed full of anything you might need to raise garden plants and flowers. Some gardens are still available for this summer so if you are interested call Jim at 828-508-5094; we ask for \$10 per garden and we all put produce on the tables outside the East doors to the Sanctuary.

Jim Selby

We are looking for an additional person to help on the Congregational Care committee to plan, assist and carry out a new ministry for our church family members. We will be starting a “Meal Ministry” that will help when a member is facing difficult, maybe debilitating, times – like a planned surgery, an extended illness or injury. This Ministry will facilitate a plan for gifts of meals that will be delivered to the member’s home as needed. When someone is returning home from the hospital or nursing an injury, what a relief it will be to have a good meal taken to them. At SCUMC, we care for our members as if we are all one family. Let’s continue to show our support for those in need by helping them at their most vulnerable time. This ministry will not fall onto 1 person’s shoulders. Rather, it is meant to be a coordinating position so that many people can participate in the joyous task of providing comfort and support. You will be working with the other members of Congregational Care – Dana Biles and Teresa Rivera. If you are interested in serving in this capacity, please talk to Pastor Kim or Lila DeBolt. Thank you for giving of your time to help someone in need!

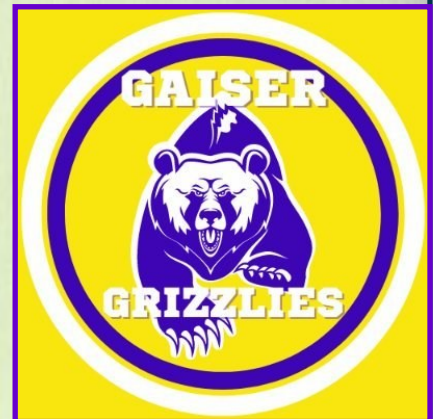
Congregational
care





First Fridays at Share!

Interested in reaching out to the vulnerable in our community? Salmon Creek UMC is beginning a new ministry of serving lunch at Share House - 1115 W 13th St. on the first Friday of every month. The time commitment is 11:30am - 2pm. No experience is necessary, however, you will be asked to complete a Share volunteer application and watch a couple of food safety videos. If you are interested, you can sign up at the information desk at the church.



Feed a Hungry Grizzly - middle school students at Gaiser Middle School have lunch between 11:15 and noon, but school goes until 3:50. That means that by 6th or 7th period, these teens are hungry! You can help out by donating individual serving snacks (granola bars, crackers) that can be given to our Family Resource Coordinator or put into the student store. Snacks can be left at the church and will be transferred to Gaiser.

Share | Volunteer Service Opportunities



Hot Meals Program provides daily, free meals to the public, every day of the year. Currently we serve 10,000+ to-go meals a month. Much of the food used in the program is donated by area grocery stores and is prepared each day by volunteers and staff. Individuals and groups of 3-4 members are welcome!

Mon. to Fri. Volunteer Shifts: 8:00-10:00 a.m. | 11:30 a.m.–2:00 p.m. | 3:30–6:00 p.m.

Weekend/Holiday Volunteer Shifts: 8:00–10:00 a.m. | Dinner 1:30–4:30 p.m.



Backpack Program provides food-filled bags for children and their families in need of food assistance during the school year. Volunteers work with staff to assemble and deliver 1,200+ bags to 85 Clark County schools. We also provide food at 18 Fresh Food Pantries in school Family Community Resource Centers through Evergreen and Vancouver Public School. Through these initiatives, food assistance is provided to about 2,000 kids per week. Individuals and groups up to 5 members are welcome to sign up!

Wed. Volunteer Shifts: 8:30–10:00 a.m. | Thurs. Volunteer Shifts: 8:30–10:00 a.m.



Summer Meals Program provides 18,000+ meals to children ages 0-18 from late June to mid-August. On weekdays only, volunteers prepare, pack and deliver meals to sites in Vancouver and greater Clark County. Individuals and groups up to 10 members are welcome to sign up!

Mon. to Fri. Volunteer Shifts: 9:00-11:00 a.m. | 11:00 a.m.–2:00 p.m. | 1:00 p.m.–2:30 p.m.



Donation Warehouse: Help to stock our shelves and prepare donated items for Share's clients. Every week our donation warehouse is supported by dozens of donors and volunteers to get essential items out to our clients who are unsheltered, in emergency shelter, moving into new housing, or in need of food assistance. Throughout the year we also host special resource programs such as our Spring Basket and Back to School Supplies programs. Join us for a Donation Warehouse activity as an individual or as a group! Openings vary throughout the year.

Volunteer Shifts Tuesdays 10:00 a.m.-12:00 p.m. and Thursdays 2:00-4:00 p.m.



Outreach Supply Kit Packing: Share's Outreach Team serves hard-to-reach people by going into the community and bringing services to them. Many of our clients struggle in accessing services due to mobility, physical and mental health concerns, or difficulty in being around large groups of people. Our Outreach Team works to bridge that gap so that everyone experiencing homelessness in Clark County has access to a variety of services that can improve their situation. Volunteers support the community by preparing supplies for distribution. Program operates every 2nd and 4th Wednesday. Individuals and groups up to 10 members are welcome to sign up!

Available opportunities will be posted online, please check out website"



Give with Cheer Program: The holiday season is a busy time for Share as we work with our community supporters to provide donations for food boxes, gifts, winter essentials, and the most needed items for clients for the year to come. As a volunteer, you will join our staff in accepting, sorting, packing, and preparing donations of food and resources for our clients. We always have a lot of fun while keeping busy during this cheerful time of year. Individuals and groups up to 15 members are welcome to sign up!

Available opportunities will be posted online in October, please check our website.



Special Projects, Events, Activities, Shelter Assistants, and More! In addition to the above programs, we also have many opportunities come available throughout the year. Join us at a special event, like the Annual Gala or Soup's On! ... volunteer to run a special activity for children or clients in shelter ... offer your skills in maintenance projects or as a clerical assistant ... help out with a neighborhood clean up or a special project for an upcoming program.

Available opportunities will be announced via email, posted online or we will contact you with a phone call. Feel free to reach out with an idea!

Learn more: Molly Evjen at mevjen@sharevancouver.org or visit sharevancouver.org

Share's believes every person counts. Together we pursue a stronger community by building relationships, advocating for equitable access to housing and food stability while empowering every individual to grow and thrive.



VBS

JULY 7 to JULY 10

Take kids on the ultimate Alaskan adventure where the northern lights shine over majestic mountains, racing rivers, and sparkling glaciers. As they trek the tundra, they'll discover how easy it is to lose sight of what's true in our wild world today. Guiding them towards Jesus, True North VBS reveals that He is a faithful friend we can always trust. He's our True North!

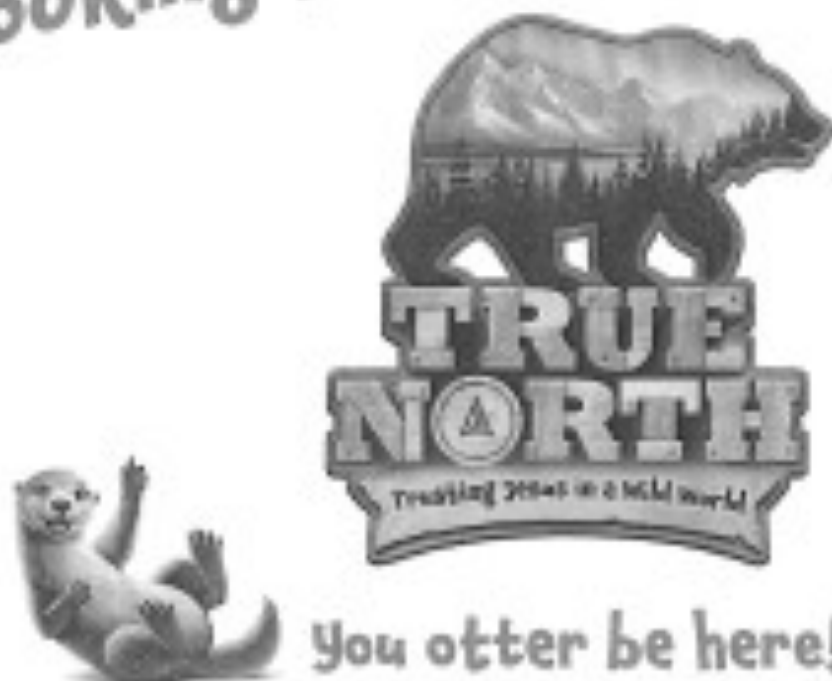
Kids will foster a deeper connection with our faithful friend, Jesus, while discovering the great Alaskan frontier. As kids trek through the tundra of Alaska and experience what it means to trust in Jesus, prepare for amazing faith connections to unfold!

[VBS True North Registration Form.pdf](#)

Video on True North VBS program

[true-north-vbs-2025-teaser.mp4](#) | Powered by Box

Looking for mountains of fun?



You otter be here!

New friends > Amazing experiments > Creative games
 Super-fun snacks > Surprising adventures > Incredible music

Location: Salmon Creek United Methodist
(church name)

Save these dates: 7/7-7/10 & Sunday 7/12
(YES dates)

Each day's fun happens from: 9:00 am -12:00 noon
(daily start and end times)

For more information, call or visit: 360-573-3111
(church phone number and web address)

Register online here: Salmoncreek.church
(registration web address)

PAY IT FORWARD

A close-up photograph of two hands, one from the left and one from the right, with fingers curled to form a heart shape. The hands are positioned in front of a bright, out-of-focus green background, likely foliage. The text "PAY IT FORWARD" is written in white, bold, sans-serif capital letters across the center of the heart formed by the hands.

PAY IT FORWARD POTLUCK A SUCCESS!

Thanks to everyone who attend the potluck lunch in March celebrating the success of the Pay It Forward Capital Campaign! Delicious food was enjoyed and lots of great conversations were had. An additional \$584 was given to support the on-going fund-raising campaign. Thanks to everyone who generously donated to this important cause. We will be continuing on with the next -needed maintenance project very soon. Thanks to EVERYONE who helped make this event a success – cooks, coffee maker, planners, set-up crew, tear-down crew, and dishwashers.

You are all very much appreciated!!!



CHECK OUT THE “TANNER BANNERS”

The next time you are in the FMC gymnasium, take a look at the walls on either side of the stage. You will find the new “Tanner Banners”. These new additions proudly display our mission statement here at SCUMC, as well as the United Methodist Church’s mission statement. We, as Christians, have a lot to say and we need to share our good news with everyone.

The idea behind this endeavor is attributed to Monica Tanner, a long-time member of our congregation and a valuable asset to our ministry teams. She noticed the previously-empty walls and the fact that we have numerous people using our gym – both congregation members and various outside groups. Why not use that wall space to “advertise” what we strive for here in our church and in our Methodist way of life. Displaying our mission statements might be thought-provoking, question-raising, inspiring, reassuring, or a source of much-needed hope. We just might entice someone to learn more about SCUMC and that person may become a part of our church family. Being in the faithful body of the UMC, we want to and must be forever inviting, welcoming, transparent, and not afraid to show our purpose of making disciples of Jesus Christ. So, after some discussion and shopping, it was decided and unanimously approved by the Administrative Board that hanging banners would be a great way to display our mission statements. They were designed and ordered and now are hanging so that everyone can appreciate them and be frequently reminded of our purpose.

This is a great example of how everyone at SCUMC has a valuable idea that needs to be shared. Do not be afraid to speak up, participate, come forward to serve, and be a part of the ministry that happens here. We need everyone working together to move us forward.

So, make an effort to go to the gym and check out the Tanner Banners! They hang majestically and proudly represent our mission. And the next time you see Monica – give her your thanks and appreciation for making a difference in our church!

Many thanks go to Steve Enyeart and Andy Clayton for the great job they did in hanging the banners. Our Trustees are the best and they deserve your thanks also!

We are GREATER TOGETHER here at SCUMC!

Lila DeBolt



Thank you to all who participated in our Earth Day “work day” on Saturday, April 18th. We planted, weeded, trimmed cleaned up and picked up trash. We are so grateful to those who helped to maintain and beautify our lovely church grounds; what a way to honor our planet Earth!!







On Sunday, April 19th, we continued to celebrate Earth Day, honoring our earth and our church. A number of informational materials were available as well as church items related to Earth day with our logo, which are still available for purchase if you missed it. Talk with Lila DeBolt. Again, thank you to all who participated!!

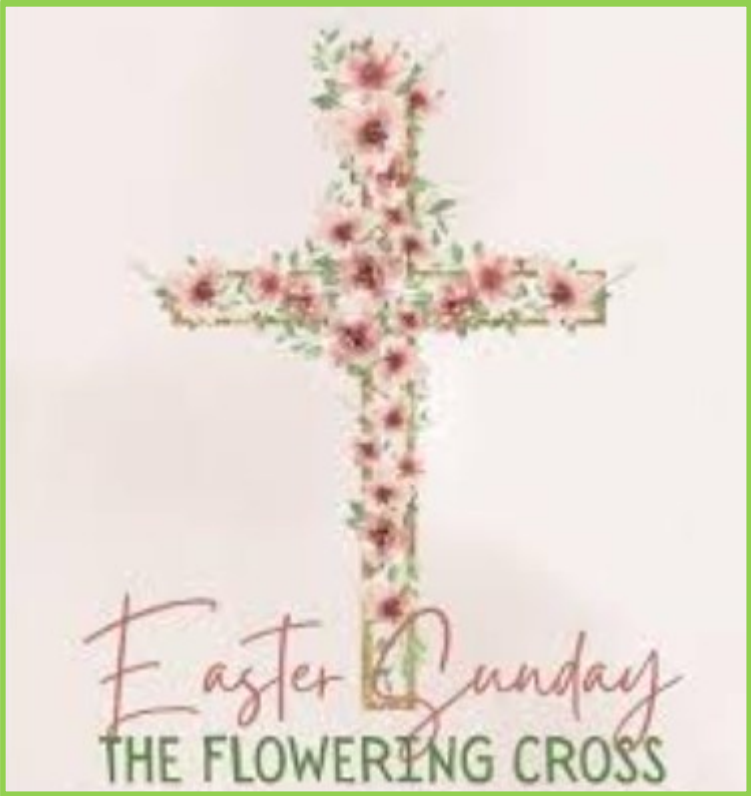


PUZZLE TIME SUCCESS!

The first session of afternoon Puzzle Time has come to a close for the summer. During this first session of fun, 3 ½ puzzles were assembled with great joy and only minor frustration! Thanks to everyone who stopped by to put in a few pieces, or spent a few hours making art come to life. Join us in the fall when Puzzle Time starts again!

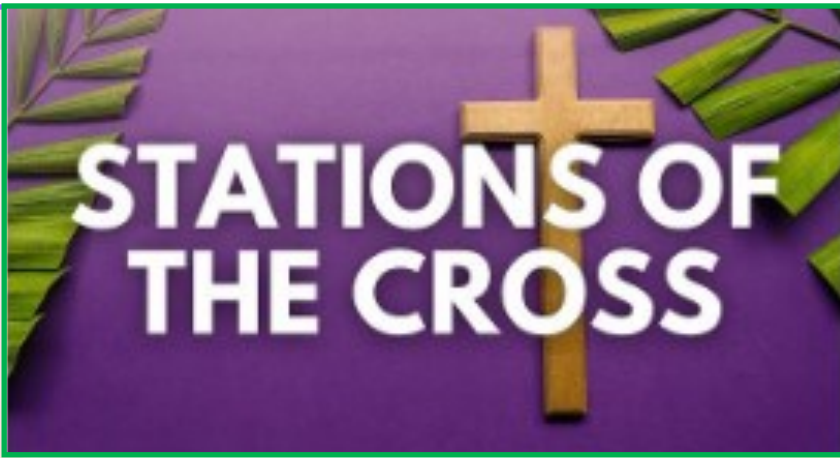
By the way – did you know that there are many puzzles available in the Library for you to check out? You can take these home, enjoy the fun and then return them for someone else to enjoy. Stop by to take a look at the many choices you have. There is no time limit for you to have them - so do one in a day or a month! It is a very relaxing way to spend an afternoon. Try it!



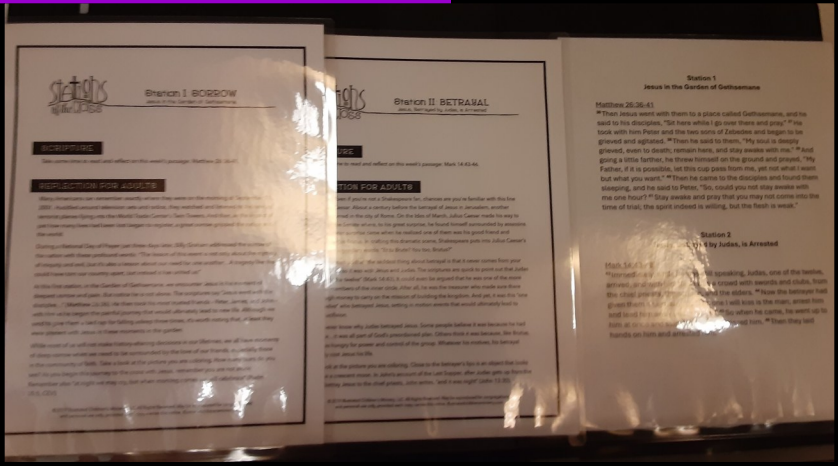


Thanks to all of those who brought beautiful, fresh flowers to adorn our cross for Easter worship services! It was especially beautiful this year! What a lovely way to honor our Risen Lord!!

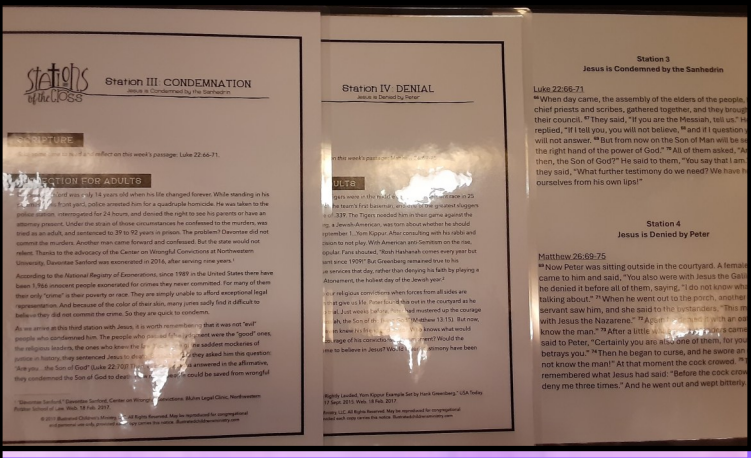
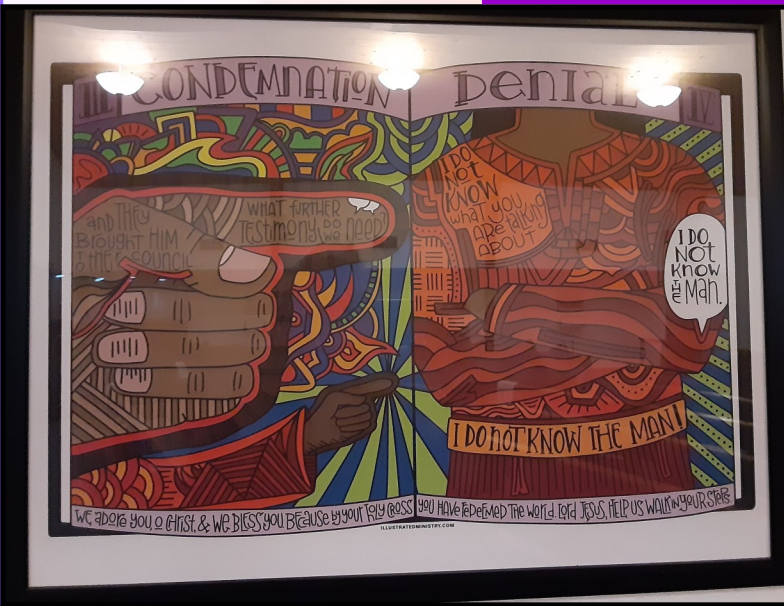


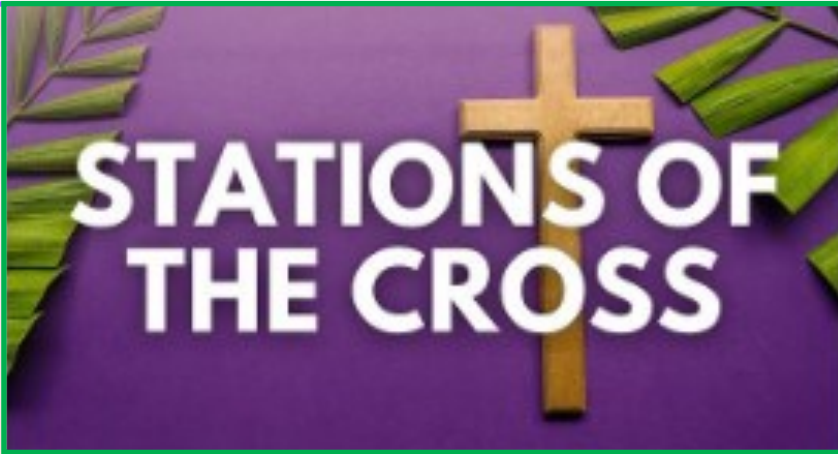


STATION 1 and 2
SORROW and BETRAYAL

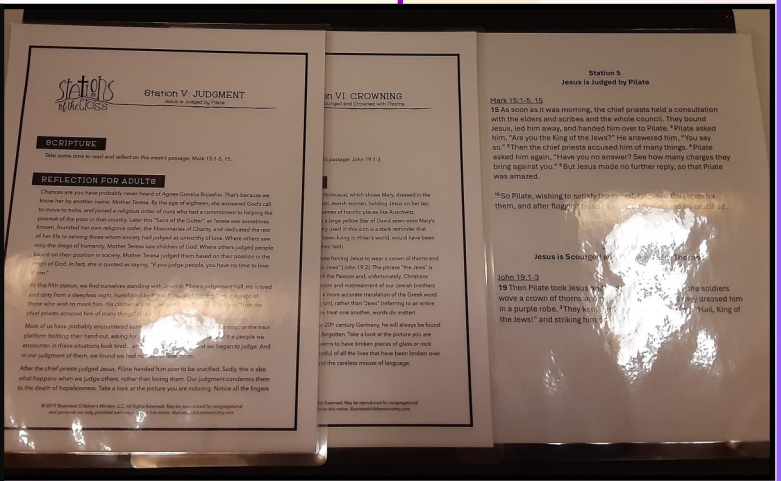
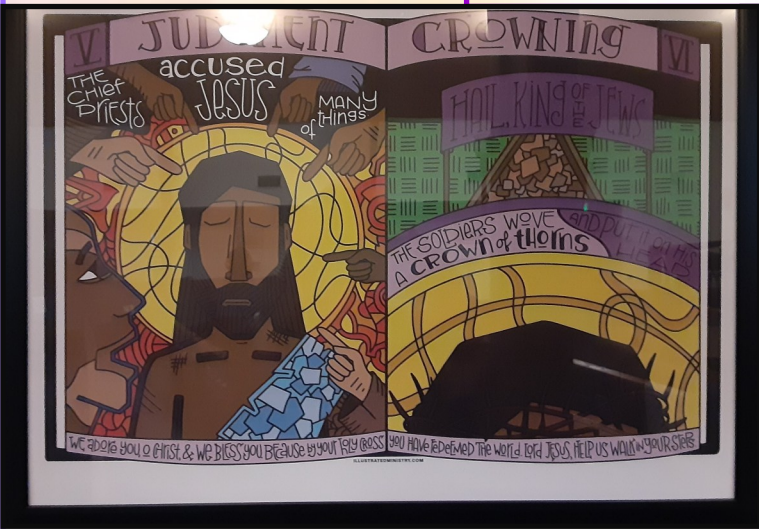


STATION 3 and 4
CONDEMNATION and DENIAL

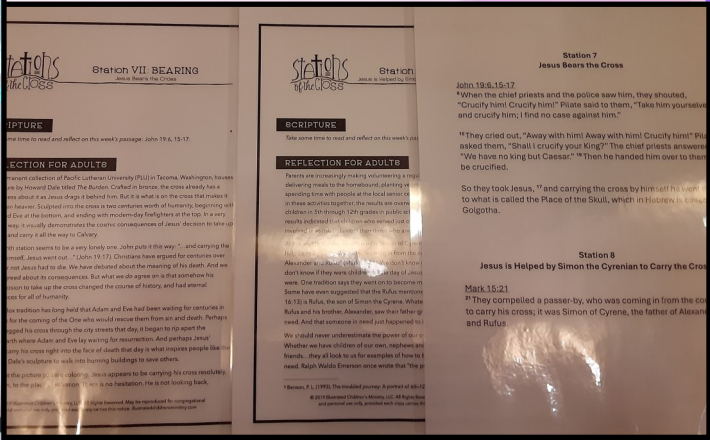


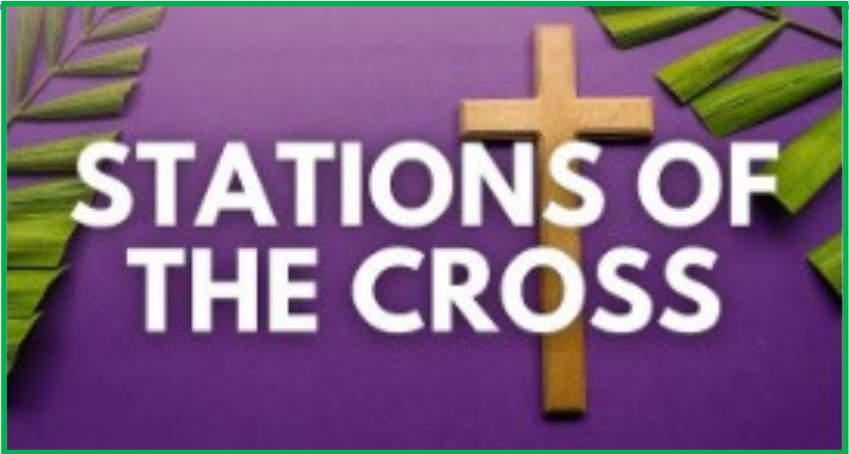


STATION 5 and 6 JUDGMENT and CROWNING

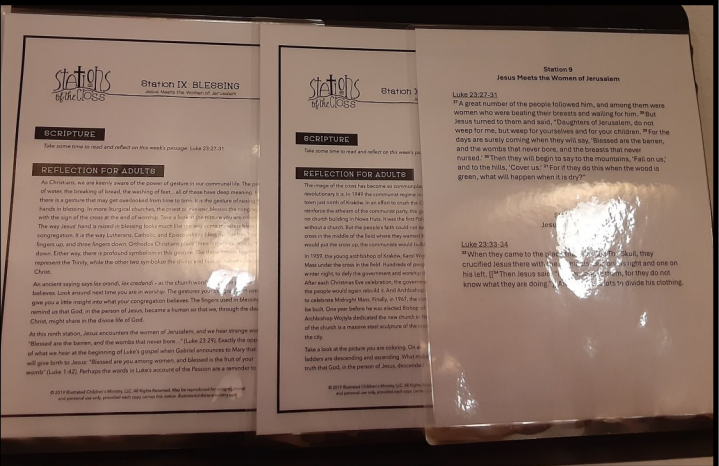
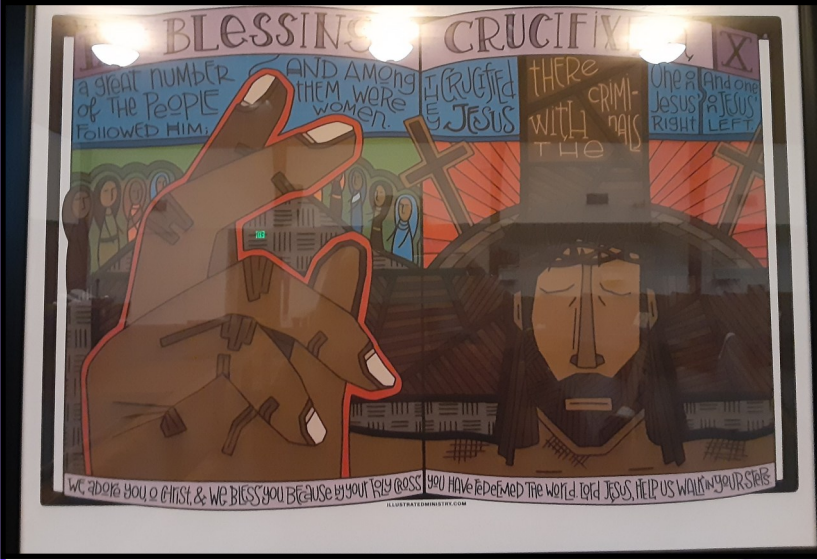


STATION 7 and 8 BEARING and HELPING

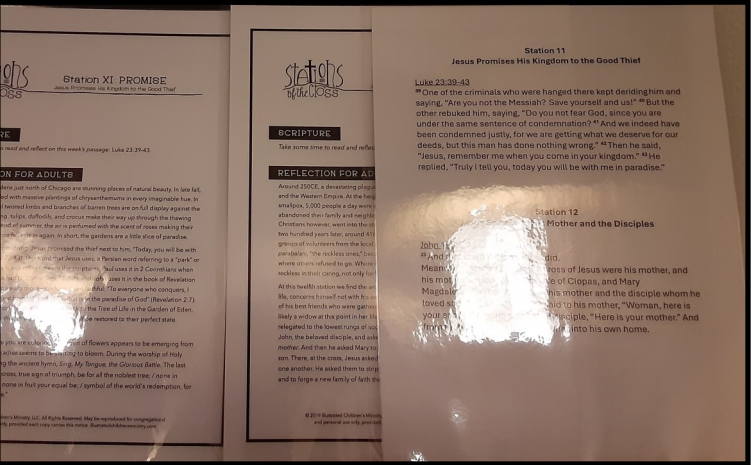


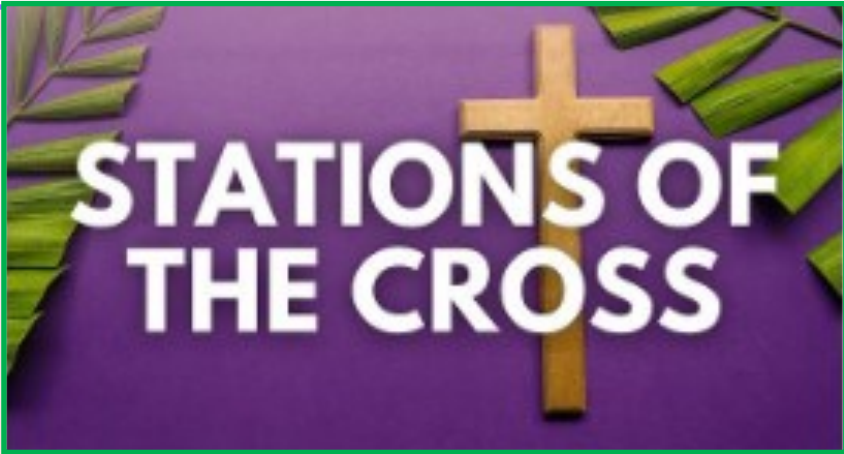


STATION 9 and 10 BLESSING and CRUCIFIXION



STATION 11 and 12 PROMISE and Care





STATION 13 and 14 DARKNESS and BURIAL



Station XIII DARKNESS
Dies on the Cross

SCRIPTURE
Take some time to read and reflect on the week's passage: Matthew 27:45-46.

REFLECTION FOR ADULTS
There is a story told in South Africa about some children who threw rocks at a delivery van one day. The driver was called, and they opened fire, killing an innocent 10-year-old girl. One of the soldiers was chosen to guard the little girl's body, which was lying in the dust, while they waited for the authorities to arrive. Seeing that the girl's eyes were torn and her body exposed, the soldier took off his own shirt to cover the child. Then he stood guard, dressed only in his pants. When one of the other soldiers checked him and asked why he would do such a thing, the soldier replied, "She is also made in the image of God."⁴

Christians throughout the ages have always given great respect to the human body after death. Whether through washing and anointing, mourning, working traditional ways, burying it in the earth, or returning a person's ashes to God's creation, Christians have ritually shown their profound belief that our bodies are dwelling places of God's Spirit. Our funeral practices are meant to remind us of the truth found in the opening chapters of the Bible when God said, "Let us make humankind in our own image" (Genesis 1:26).

At this thirteenth station, we meet Joseph of Arimathea, a person of great wealth and merciful compassion. Mary was the widow of a poor carpenter, and Jesus was an itinerant rabbi. In the eyes of many, they were just poor peasants. In the eyes of the state, Jesus was criminal insanity of a proper trial. But to Joseph's secret follower of Jesus, Jesus was the very image of God And, as such, he deserved a respectful burial.

⁴Carlin, John. A Passion of Paper: Meditations and Prayers from Around the World. New York City: Manhattan, 1998, 237.

© 2019 Roman Catholic Diocese of Dallas. All Rights Reserved. May be reprinted for congregational and personal use only, provided each copy carries this notice. RomanCatholicDiocese.com

Station XIV BURIAL
Laid in the Tomb

SCRIPTURE
Take some time to read and reflect on the week's passage: Matthew 27:57-60.

REFLECTION FOR ADULTS
There is a story told in South Africa about some children who threw rocks at a delivery van one day. The driver was called, and they opened fire, killing an innocent 10-year-old girl. One of the soldiers was chosen to guard the little girl's body, which was lying in the dust, while they waited for the authorities to arrive. Seeing that the girl's eyes were torn and her body exposed, the soldier took off his own shirt to cover the child. Then he stood guard, dressed only in his pants. When one of the other soldiers checked him and asked why he would do such a thing, the soldier replied, "She is also made in the image of God."⁴

Christians throughout the ages have always given great respect to the human body after death. Whether through washing and anointing, mourning, working traditional ways, burying it in the earth, or returning a person's ashes to God's creation, Christians have ritually shown their profound belief that our bodies are dwelling places of God's Spirit. Our funeral practices are meant to remind us of the truth found in the opening chapters of the Bible when God said, "Let us make humankind in our own image" (Genesis 1:26).

At this fourteenth station, we meet Joseph of Arimathea, a person of great wealth and merciful compassion. Mary was the widow of a poor carpenter, and Jesus was an itinerant rabbi. In the eyes of many, they were just poor peasants. In the eyes of the state, Jesus was criminal insanity of a proper trial. But to Joseph's secret follower of Jesus, Jesus was the very image of God And, as such, he deserved a respectful burial.

⁴Carlin, John. A Passion of Paper: Meditations and Prayers from Around the World. New York City: Manhattan, 1998, 237.

© 2019 Roman Catholic Diocese of Dallas. All Rights Reserved. May be reprinted for congregational and personal use only, provided each copy carries this notice. RomanCatholicDiocese.com

STATION 15 NEW LIFE and NEW BEGINNING



Station XV NEW LIFE & A NEW BEGINNING
The Resurrection of Jesus

reflect on the week's passage: Mark 16:1-6.

FOR ADULTS
A Presbyterian preacher of the 20th century, once wrote, "The glorious proclamation to us is that life for us does not stop when death comes."¹ Francis, the great Roman Catholic pope of the 21st century, again belongs to the past but lives in the present and is projected the everlasting 'today' of God.² On Easter Sunday, many hear words of Psalm 118: "This is the day the Lord has made; let us rejoice and be glad in it." The witness of scripture, and the witness of over two thousand years, tell us that on that very first Day of the Week, God did something new: he raised Jesus to new life and giving all humanity a new beginning.

Throughout the year of visiting the graves of their loved ones, many spend time at the cemetery cleaning the tombstones and planting flowers. They may bring an evergreen wreath and holy. And on their loved ones' birthdays, they place flowers on the edge of the tomb. All of this is admirable, but the message of this last station is that life is not just a door to the eternal life that awaits God's faithful people. It is also a reminder that eternal life begins right here, right now. To come to the tomb early that Sunday morning, death was all they

¹Carlin, John. A Passion of Paper: Meditations and Prayers from Around the World. New York City: Manhattan, 1998, 237.

²Carlin, John. A Passion of Paper: Meditations and Prayers from Around the World. New York City: Manhattan, 1998, 237.

© 2019 Roman Catholic Diocese of Dallas. All Rights Reserved. May be reprinted for congregational and personal use only, provided each copy carries this notice. RomanCatholicDiocese.com



During JOY Bible recently, we were reminded of the special "A Caring Closet" off of 78th Street in Vancouver. If you need medical equipment or adult sanitary supplies, they probably have it for free! If you have items to donate, please also remember them. For more information, click for the website below.

- Monica Tanner

[A Caring Closet | Free Durable Medical
Equipment in SW Washington](#)

caring
closet

*Celebrate
May Birthdays*



Laurie Doering—May 3

Michael Rainville—May 8

Jerry DuPree—May 11

Claire Davis—May 19

Susan Knowles Berry—May 27

Nancy Volgamore—May 29

Sharleen Rainville—May 30

Sue Wiltsey—May 31

Don't see your birthday?

Let us know when it is
and we'll
update records!

RELOVE



**Celebrating
90 years of
life & love**

Our heartfelt congratulations to our dear Bonnie Jean Brandt, who celebrated her 90th birthday on April 14th. On the Saturday prior, her family had a celebration for her, and she was honored by family and friends.

We love you, Bonnie Jean!!



Beautiful Miss Bonnie Jean Brandt!



He fills my life
with good things.
-Psalm 103:5

Happy Spring SCUMC!!

***We are a welcoming United Methodist
Church congregation
that worships together as disciples of Jesus Christ,
uniting in fellowship, missions and service.***

Thank you for reading the Circuit Rider! If you have questions or concerns, please feel free to contact us.

12217 NE HWY 99
Vancouver WA, 98686
360-573-3111 www.salmoncreek.church

Submissions for the Circuit Rider can be sent to admin@salmoncreek.church Deadline for each month for submission is the 15th of the prior month.

Editor: Nancy Volgamore