



Quality By Vision

www.qbyv.com

Quality you can see!

SEAMetal HD[®]

World's first High-Definition seam inspection system

2.74	5.40	2.83
Thick	Length	Overlap

0.06	3.95	3.71	76.4
Seam Gap	Body Hook	Cover Hook	Overlap %

94.1	0.400	0.423
BH Butting	Body Thick	Cover Thick

Can Spec : Standard Beverage Line No. : 1 Units : mm
Report No. : 3875 Head No. : 1/2 Section : 2/2

Continue Rescan Save Image Print Exit

***The best seam inspection system in the world
just got better!***

***INSTANTLY MEASURES SEAM PARAMETERS OPTICALLY!
FREE SPC PACKAGE INCLUDED!***

SEAMetal HD[®]



www.qbyv.com

Quality you can see!

Introduction

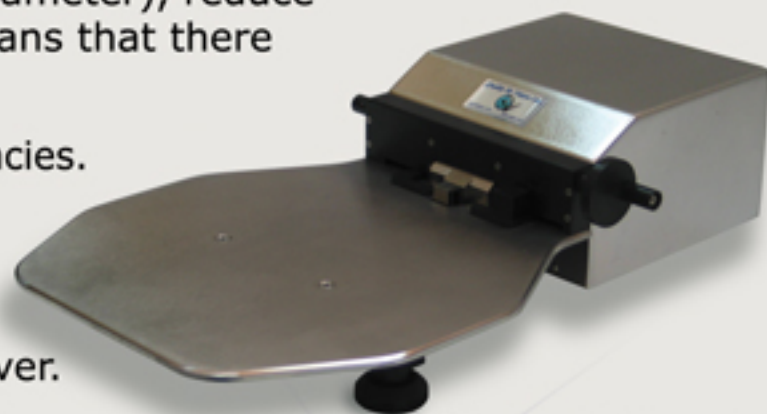
Companies are under pressure to downgauge (reduce lid diameter), reduce material thickness and increase production speed. This means that there are now more seaming problems than ever before!

Companies don't need to increase double seam check frequencies. Checking every can will not help to produce better cans - it'll just stop the line more often.

High accuracy, high resolution, fast and repeatable double seam measurement systems are needed now more than ever.

SEAMetal HD is Quality By Vision's third generation of double seam inspection. Quality By Vision has never stopped improving and developing this system since 1993, when it produced the world's first computerized fully-automatic double seam inspection system: SEAMetal 9000X.

This latest system introduces an integrated High Definition camera, providing an unprecedented look at the seam. You can now see the image better and get a much more accurate measurement!

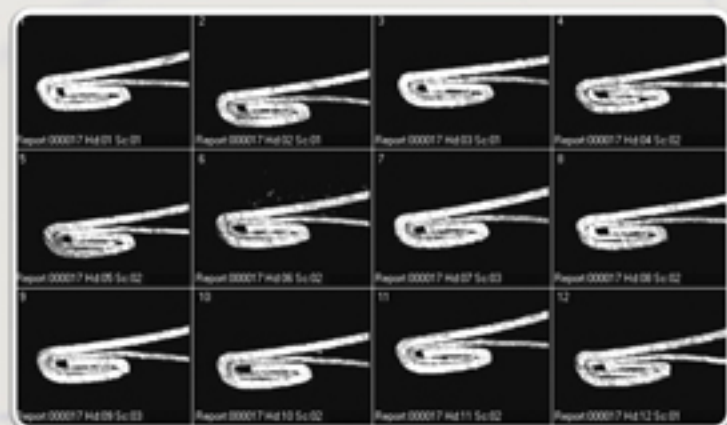
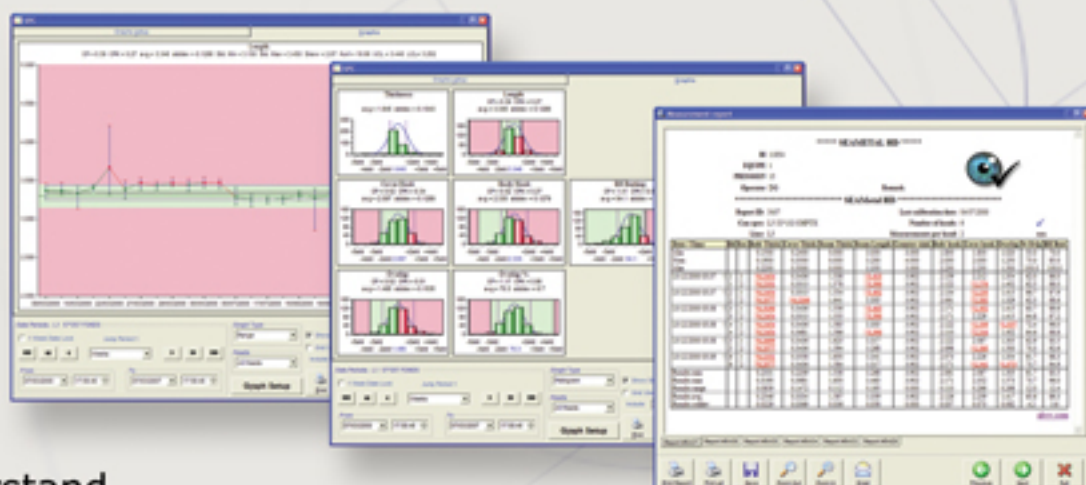


Benefits

- Low cost, affordable
- High definition images
- High GR&R
- Flexible features
- Flexible reporting & SPC statistics
- 21 CFR compliant

Features

- Free SPC system- easy to use and understand.
- Measurements can be done automatically, manually or configured to an external caliper or gauge.
- Great SPC graphics, supports drilldown directly from SPC graphs!
- Centering device ensures image is ideal.
- Adaptive detection algorithm with improved accuracy!
- Integrated with Excel for automatic, customizable reports!
- Multilingual! Translations available to most languages!
- True thickness option for accurate double seam thickness analysis, without external calipers or gauges!
- Network support - remote report viewing through local and remote network!
- Customizable reports!
- Supports undo to avoid operator mistakes!
- Supports rechecks - in situations where seamer adjustments were performed.



Specifications

Magnification:	at least x75
Resolution:	4-5 microns
Interface:	USB 2.0
Optical unit types:	Food can, Beverage can, Aerosol and more...



Quality By Vision

qbyv@qbyv.com
www.qbyv.com

All trademarks and copyrights are reserved by their respective companies