



HAM

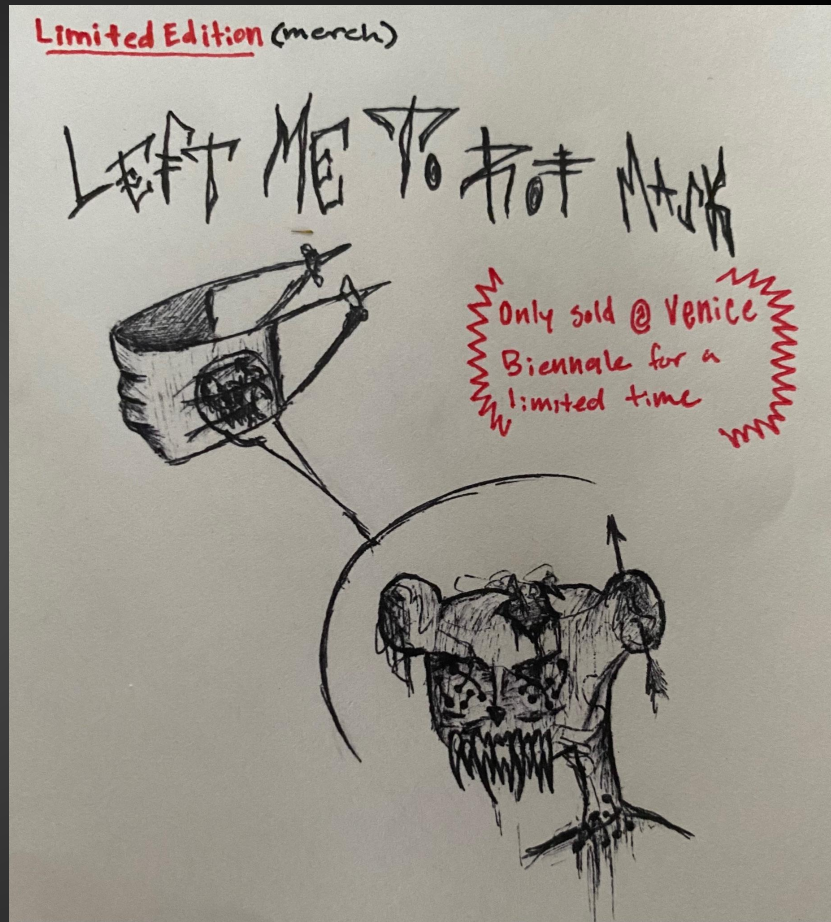
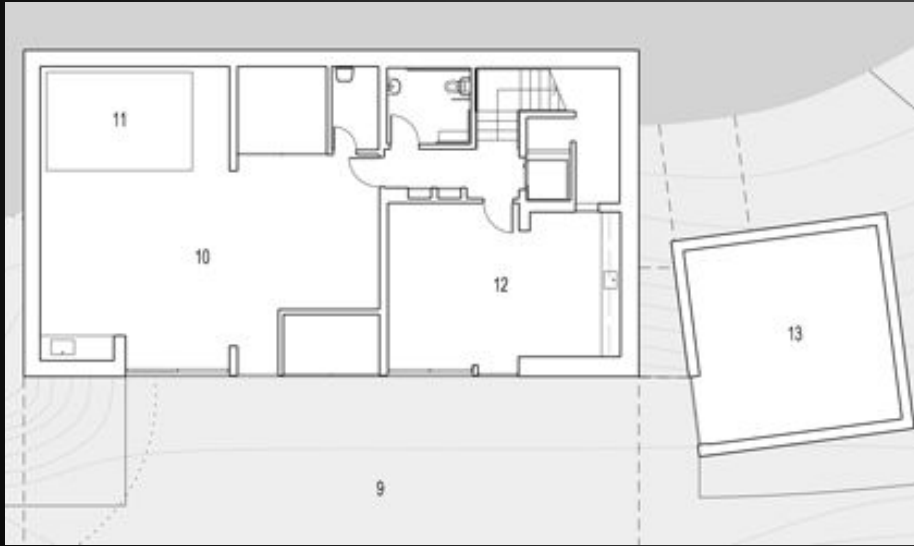
(Hailey M. Aguirre)

Period 2

2.5.21

Venice Biennale Map

To lighten your experience for seeing what I showcase in various rooms, a free mask comes along with your visit to reassure your safety!



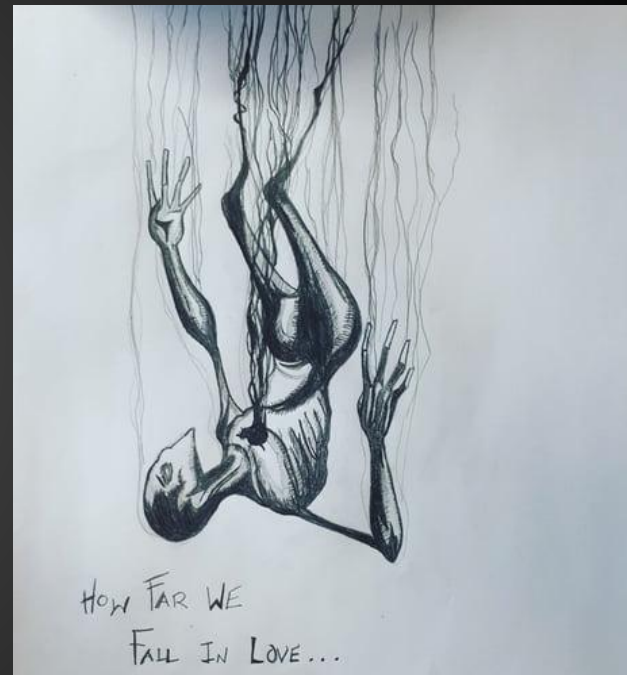
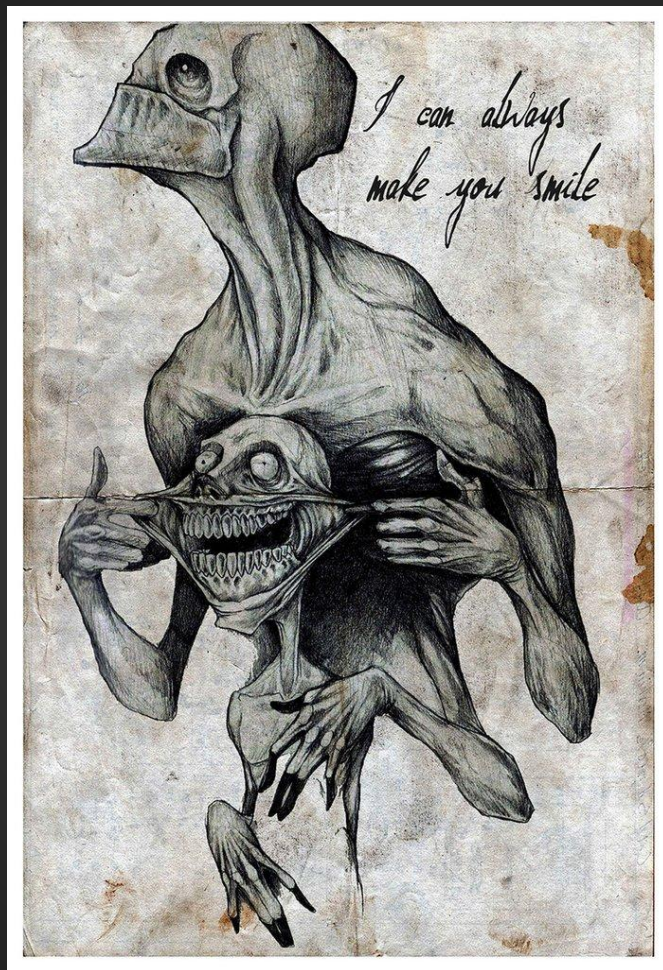


Bio:



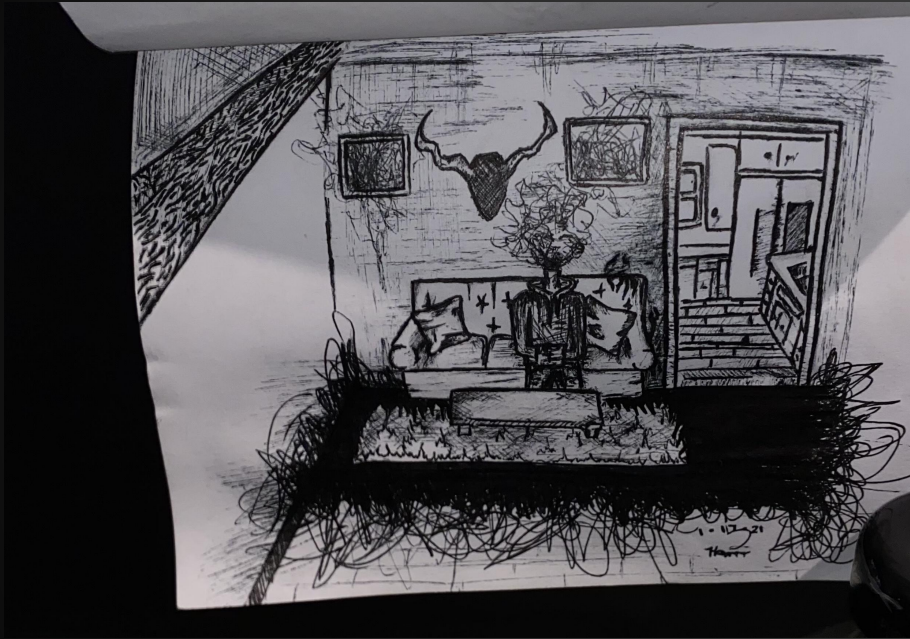
Hi my name is HAM and I've been drawing as long as I could remember. I feel in love with dark macabre art because I found this art style helpful when it came self expression. A Couple of Artist who I look up to very much are, Lil Peep, Shawn Coss, and XXXtentaction. They have always influenced me to want to bring more awareness about people's mental struggles, given mentally it's harder to seek help than physically. Which could delay your path to pursuit your self happiness. I began to not only view my own mental state but of others as well. Mainly drawing the days away with dark sketches of what today's society doesn't really bring much attention to (At least before when COVID-19 didn't exist, mental awareness wasn't much of a priority). There is so much more that goes on inside, our fragile feelings mixed along with expectations of our peers, family and friends. The pressure and standards that we have to meet to make certain amount of money that can determine how "good" our life will get can get too much for some people in this world.

Shawn Coss Artwork:



Showing #1:

Spaced out



Patiently Waiting



Showing #2:



Silent weeper



Lurker