

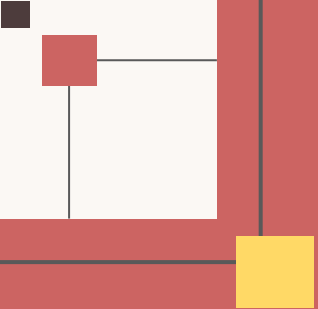




# ART EXHIBITION

Kirsten Laquindanum  
Period 2





# ART INFLUENCER

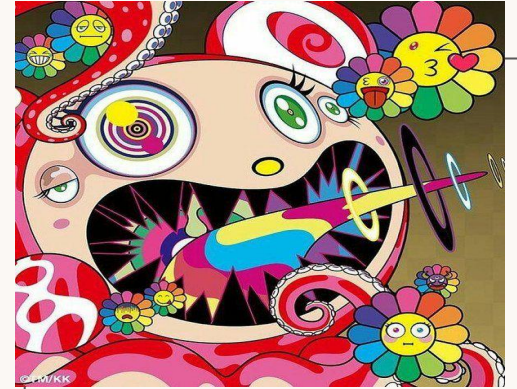
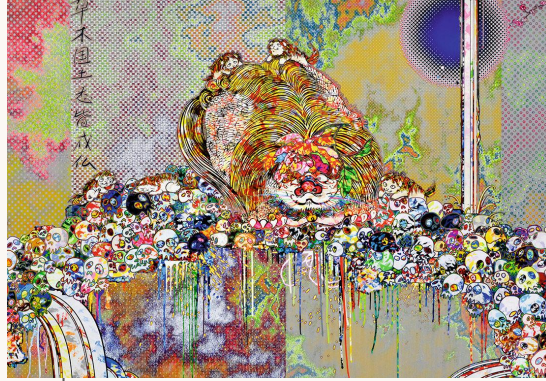
# TAKASHI MURAKAMI

- From Itabashi City, Tokyo, Japan
- He does contemporary art, superflat, and pop art

Murakami as a person and his artwork inspires me. His artwork brings me joy and is my type of style. His art is very unique and crazy.



# Murakami's Work



# Murakami's **brand** collabs



VANS



Hello Kitty/Sanrio



Louis Vuitton



A whiteboard with a red border. The text "MY FAKE" is written in the center in red, bold, sans-serif capital letters. The whiteboard is decorated with several geometric elements: a black square in the top-left corner, a red square and a yellow square connected by a vertical line to the top edge, a red square and a yellow square connected by a horizontal line to the left edge, a black square, a red square, and a yellow square in the bottom-right area, and a red square and a yellow square connected by a horizontal line to the bottom edge. There are also some faint lines and shapes in the bottom-left and bottom-right corners.

**MY FAKE**

# SARA

Making art to spread happiness to the world, *Sara*, has made different types of art. From contemporary art, superflat, and pop art. Sara is a Filipino artist who is inspired by Takashi Murakami and brought his ideas of art and created her own. Sara means happiness and pure in Japanese. Sara loves all the different types of bright colors that represents happiness and love. She uses her personality and puts it into her art to make it even more unique.



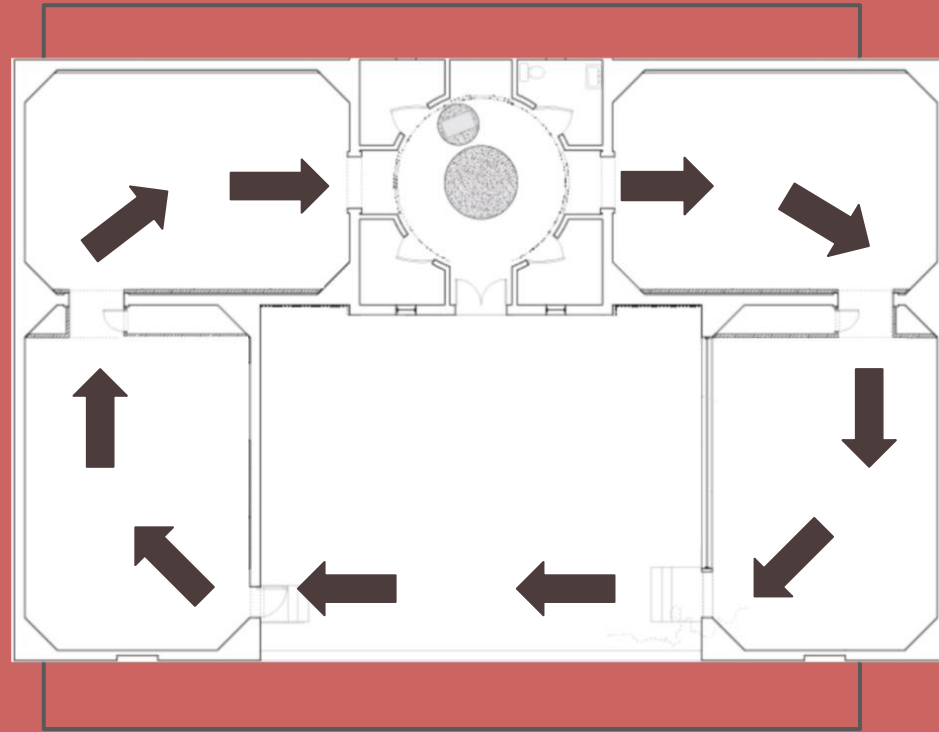


# EXHIBITION ARTWORK



# THE VENUE: US PAVILION VENICE BIENNALE

The viewers will be rotating around the building to see my art. Once the viewer enters the room my art is in, they'll be hearing music, kpop and jpop to express that I'm open to different things and they can listen to something that I listen to when I work. My work is all about fun.



<https://open.spotify.com/playlist/0Ynm2vHF3mGdrKns36tG1k?si=ccf6ec60dbcb4e62>



# Beary LGBTQ+

The flowers surrounding the bear (represents California) has different LGBT flags. Gay, Bisexual, Non-Binary, Transgender, Lesbian, and Pansexual.



SARA

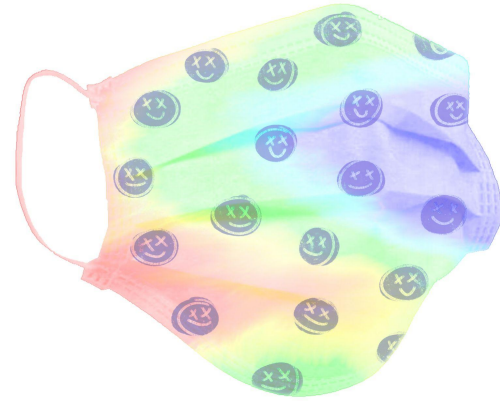
Made by Kirsten L

**MERCH**

# MY MASK

Since Covid is here, everyone is going to have to wear a mask or want a mask. My masks shows craziness and full of color. Following the trends that people love nowadays.

Made by Kirsten L





**BEST IN SHOW**





# THE END

**Links/Sources**

exhibition plan

Takashi Murakami Biography