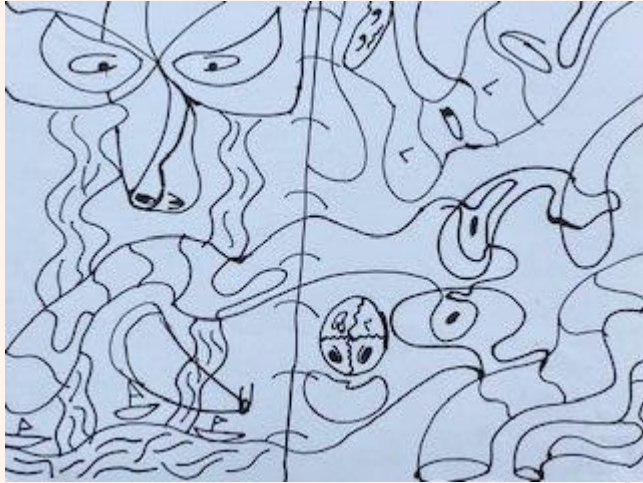


The background is a complex watercolor composition. It features large, soft-edged washes of color in shades of light pink, pale yellow, and muted blue. Interspersed among these are smaller, more defined shapes: a prominent dark blue/black area in the top left, a large red/orange circular form on the right, and a dark grey/black shape at the bottom right. Numerous small, circular and oval spots in various colors (black, brown, green, red) are scattered throughout, resembling ink splatters or celestial bodies. The overall texture is soft and painterly, with visible brushstrokes and color blending.

Portfolio

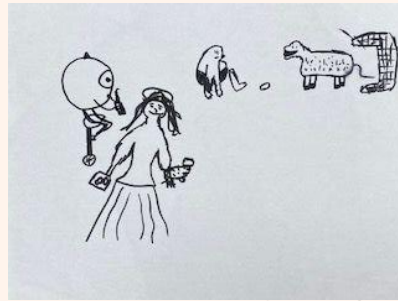
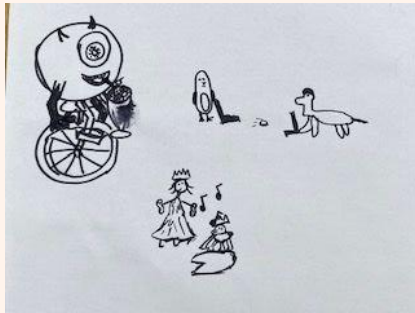
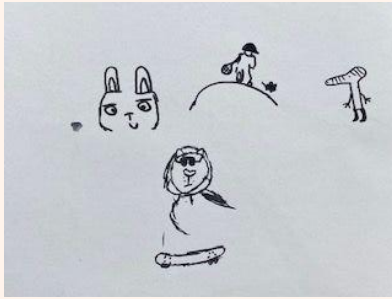
Nathen Hernandez

Shantell Martin Inspired Art



I just kept drawing lines and it worked out pretty nicely.

Whatchama Draw It



Not much to comment on but my drawings were definitely the worst out of my group.

Miro Inspired Artwork



This is one of my best artwork I've ever done in this class.

Barbara Kruger Inspired



I really like my work here. I took a old picture of Michael Jackson, added a red border, and put some text and it came out perfect.