

Driven by Quality. Defined by Trust.



Electrical Panels



Switchgears &
Protection Devices



Meters & Relays



Industrial Tools
& Accessories

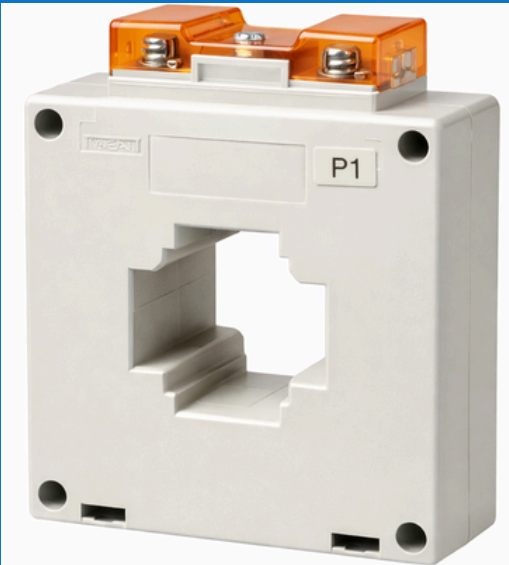
Export-Ready | Engineered for Global Standards

Metering & Protection



POTENTIAL/VOLTAGE TRANSFORMER (PT/VT/CVT)

- Rated Primary Voltage: 3.3 kV to 36 kV (or as specified)
- Rated Secondary Voltage: 110 V / 100 V / $\sqrt{3}$
- Accuracy Class: 0.2, 0.5, 1.0
- Rated Burden: 10–50 VA
- Frequency: 50 / 60 Hz
- Insulation Type: Dry type epoxy resin / Oil-filled
- Application: Metering & Protection
- Installation: Indoor / Outdoor



CURRENT TRANSFORMER (CT)

- Rated Primary Current: 100 - 5000 A
- Rated Secondary Current: 1A - 5A
- Accuracy Class: 0.2, 0.5, 1.0 (Metering) | 5P10, 10P10 (Protection)
- Frequency: 50/60 Hz
- Rated Burden: 5 – 30 VA
- Insulation Type: Dry type epoxy resin / Oil-filled
- Application: Metering and Protection.
- Installation: Indoor / Outdoor

Metering & Protection



NUMERICAL RELAY

- Protection Functions: Overcurrent (50/51), Earth Fault (50N/51N), Over/Under Voltage (59/27), Frequency (81), Directional (optional)
- Input Type: Current (1 A / 5 A) and Voltage (110 V / 100 V)
- Accuracy: $\pm 1\%$ or better
- Auxiliary Supply: 24–48 V DC / 110–220 V DC / 110–230 V AC
- Frequency: 50 / 60 Hz
- Event & Fault Records: Yes (time-stamped)
- Communication Protocols: RS-485 / Ethernet (Modbus RTU / Modbus TCP / IEC 61850 – optional)
- Application: HV & EHV substations, feeders, transformers, motors



ABT & TRIVECTOR METER

- System: 3-Phase, 4-Wire / 3-Phase, 3-Wire
- Accuracy Class: 0.2S / 0.5S
- Measured Parameters:
- kWh, kVarh (Lag & Lead), kVAh, Voltage, Current, Frequency, Power Factor
- Time Block Energy Recording: 15-Minute block (as per ABT norms)
- Voltage Input: 110 V / $\sqrt{3}$ (via PT)
- Current Input: 1 A / 5 A (via CT)
- Data Storage: Non-volatile memory with load survey & event logs
- Communication: Optical Port / RS-485 / Modem / Ethernet (optional)
- Clock: Real Time Clock (RTC) with battery backup
- Auxiliary Supply: 110–240 V AC / 110–220 V DC

Metering & Protection



VOLT METERS

- Type: Analog/Digital, panel-mounted
- Measured Quantity: Voltage (kV)
- Measurement Range: Up to 36 kV / 132 kV / 220 kV / 400 kV (via PT / CVT)
- Accuracy Class: 1.0 / 1.5
- Frequency: 50 / 60 Hz
- Dial: White, clear kV scale
- Enclosure: Square, black, flush panel mounting
- Cover: Clear glass
- Application: Substations, control & relay panels



AMMETERS

- Type: Analog, panel-mounted
- Measured Quantity: Current (kilo Amperes – kA)
- Measurement Range: Up to 1 kA / 2 kA / 5 kA (via CT)
- Accuracy Class: 1.0 / 1.5
- Frequency: 50 / 60 Hz
- Dial: White, clear kA scale
- Enclosure: Square, black, flush panel mounting
- Cover: Clear glass
- Application: Substations, control & relay panels

Switchgear



MCCB

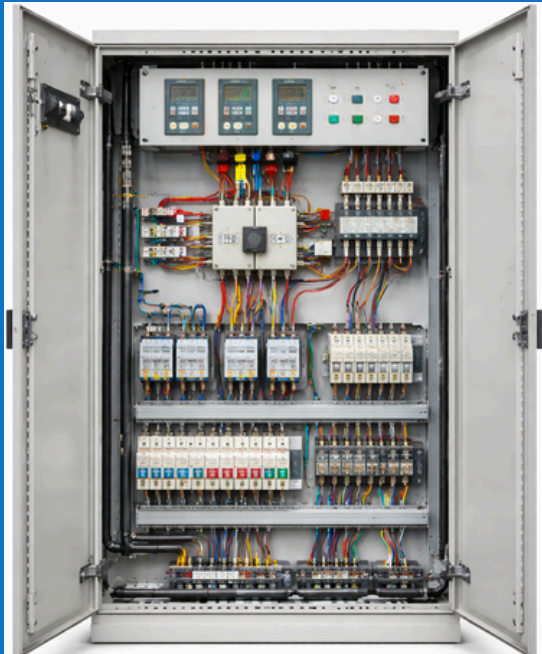
- Rated Current (I_n): 16 A to 1600 A
- Number of Poles: 3P / 4P
- Rated Operational Voltage (U_e): Up to 415 V AC
- Rated Insulation Voltage (U_i): Up to 800 V
- Breaking Capacity (I_{cu}): 25 kA / 36 kA / 50 kA / 65 kA
- Protection: Overload, Short-Circuit
- Mounting: Fixed / Draw-out
- Operating Mechanism: Manual / Motorized (optional)
- Application: LV distribution panels, MCCs, industrial & commercial installations



RCCB

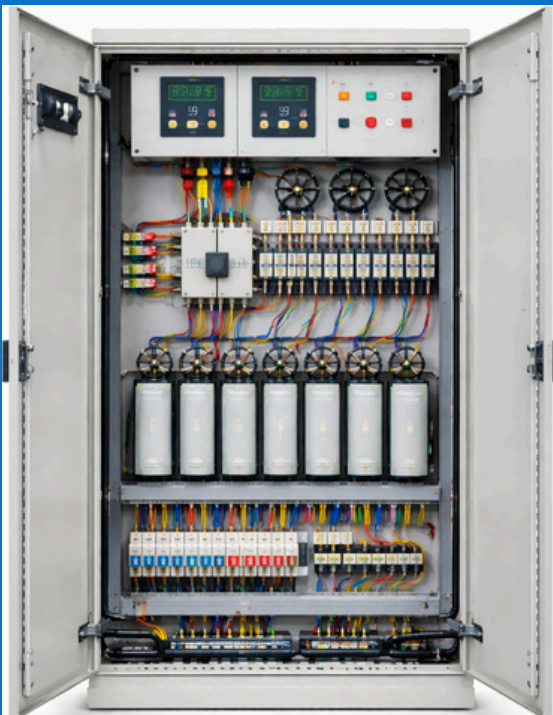
- Rated Current (I_n): 25 A / 40 A / 63 A / 100 A
- Rated Residual Operating Current ($I_{\Delta n}$): 30 mA / 100 mA / 300 mA
- Number of Poles: 2P / 4P
- Rated Voltage (U_e): 230 V / 415 V AC
- Frequency: 50 / 60 Hz
- Tripping Mechanism: Electromechanical
- Short-Circuit Capacity: Conditional, up to 10 kA (with MCB/MCCB backup)
- Mounting: DIN rail mounting
- Indication: ON/OFF position indicator
- Test Facility: Built-in test button
- Enclosure: Flame-retardant insulating housing
- Application: Earth leakage protection and equipment

Control Panel



DISTRIBUTION PANEL

- Panel Type: Power / Lighting / MCC / Sub-Distribution Panel
- Rated Voltage: Up to 415 V AC
- Rated Current: Up to 1600 A
- Frequency: 50 / 60 Hz
- System: 3-Phase, 4-Wire / Single Phase
- Busbar: Copper / Aluminium, rated as per load
- Busbar Insulation: Heat-shrink / Epoxy coated
- Incoming Device: ACB / MCCB / Isolator
- Outgoing Devices: MCB / MCCB / RCCB / RCBO
- Short Circuit Rating: Up to 50 kA
- Degree of Protection: IP42 / IP54 / IP65
- Metering: Voltmeter, Ammeter, Energy Meter (optional)
- Indication: R-Y-B phase lamps



APFC PANEL

- Rated Voltage: Up to 415 V AC
- System: 3-Phase, 4-Wire
- Frequency: 50 / 60 Hz
- Power Factor Control Range: 0.80 lag to unity (1.00)
- Controller: Microprocessor-based APFC Relay
- Number of Steps: 4 / 6 / 8 / 12 / 16 steps (as required)
- Capacitor Rating: As per kVAR requirement
- Switching Device: Power contactors / Thyristor modules (optional)
- Incoming Protection: MCCB / Isolator
- Busbar: Copper / Aluminium
- Detuned Reactor (Optional): 5.67% / 7% for harmonic mitigation
- Cooling: Forced air ventilation / Natural cooling

Control & Protection



EARTHING PLATE/ROD

- Rated Operational Voltage (U_e): Up to 690 V AC
- Rated Operational Current (I_e): 9 A – 630 A (model dependent)
- Rated Insulation Voltage (U_i): 1000 V
- Number of Poles: 3P / 4P
- Control Coil Voltage: 24 V, 48 V, 110 V, 230 V AC/DC (50/60 Hz)
- Auxiliary Contacts: 1 NO + 1 NC (expandable)
- Applications: Motor control, power switching, HVAC.



MOTOR STARTERS

- Rated Operational Voltage (U_e): Up to 690 V AC.
- Rated Operational Current (I_e): 6 A – 40 A.
- Frequency: 50 / 60 Hz.
- Number of Poles: 3 Pole.
- Control Circuit Voltage: 24 V, 48 V, 110 V, 230 V AC/DC
- Thermal Overload Relay: Built-in, adjustable current setting.
- Short-Circuit Protection: Compatible with MCB / MCCB / Fuse.
- Applications: Induction motor starting, pumps,



HRC FUSES

- Rated Voltage: 415 V / 500 V / 690 V AC
- Rated Current: 2 A – 1250 A (model dependent)
- Utilization Category: gG / aM
- Breaking Capacity: Up to 120 kA
- Fuse Element: Silver / Copper
- Applications: Short-circuit and overload protection for motors, transformers, cables, switchgear, distribution boards, and industrial panels

Control & Signaling Equipment



PUSH BUTTON

- Contact Configuration:
START: 1NO
STOP: 1NC
- Rated Voltage: Up to 600 V AC
- Rated Current: Up to 10 A
- Mounting: Panel mounting
- Application: Control panels, MCC panels.



ROTARY SWITCH

- Switching Positions: 2 / 3 / 4 / Multiple positions (as required)
- Contact Configuration: Multi-contact cam arrangement
- Rated Operational Voltage (Ue): Up to 690 V AC
- Rated Current (Ie): 10 A to 63 A (model dependent)
- Breaking Capacity: AC-21 / AC-22 / AC-23 duty
- Mounting: Panel mounting
- Actuator Type: Rotary knob / Handle
- Handle Positions: 0-1 / 0-1-2 / Custom cam logic
- Application: Changeover, ammeter/voltmeter selector



LIMIT SWITCH

- Actuator Type: Plunger / Roller Lever / Spring Rod / Adjustable Rod
- Contact Configuration: 1NO + 1NC (SPDT)
- Rated Voltage: Up to 250 V AC / 30 V DC
- Rated Current: Up to 15 A
- Application: Position sensing, end-stop control, machine automation

Industrial Tools



EARTHING PLATE/ROD

- Material: Copper Bonded Steel, Solid Copper.
- Copper Coating Thickness: ≥ 250 microns.
- Diameter: 12 mm / 14 mm / 17 mm / 20 mm
- Length: 1 m / 2 m / 3 m (custom lengths available)
- Thread Type: M10 / M12 (with coupler)
- Tip Type: Pointed / Driving tip
- Finish: Electroplated / Copper bonded
- Electrical Conductivity: High, low earth resistance



LUGS

- Material: Copper (ETP / Electrolytic Grade), Aluminum (EC Grade)
- Type: Ring Type, Tubular Type, Short Palm / Long Palm, Bimetallic (Al-Cu) (optional)
- Conductor Size Range: 1.5 sq.mm to 630 sq.mm
- Mounting Hole Size: M5 / M6 / M8 / M10 / M12 (as required)
- Barrel Type: Standard / Extended
- Insulation: Uninsulated / PVC insulated (optional)
- Crimping Type: Hex / Indentation crimping



CRIMPING TOOL

- Crimping Range: 16 sq.mm to 630 sq.mm (model dependent)
- Applicable Terminals: Copper / Aluminum / Bimetallic lugs
- Crimping Force: 8 – 12 Ton (depending on model)
- Crimping Type: Hex / Indentation
- Hydraulic Pressure: Automatic pressure release system
- Handle: Non-slip insulated grips



EXIM SOURCING

Driven by Quality. Defined by Trust.

Nashik

1, Satyam Apartment Behind
Mhasoba temple, Kadam mala,
Nashik Rd, Nahsik. - 422102.

Mobile: +91 8788188836 / +91 7020781939

 www.eximsourcing.com

 info@eximsourcing.com

Follow us on:



www.eximsourcing.com