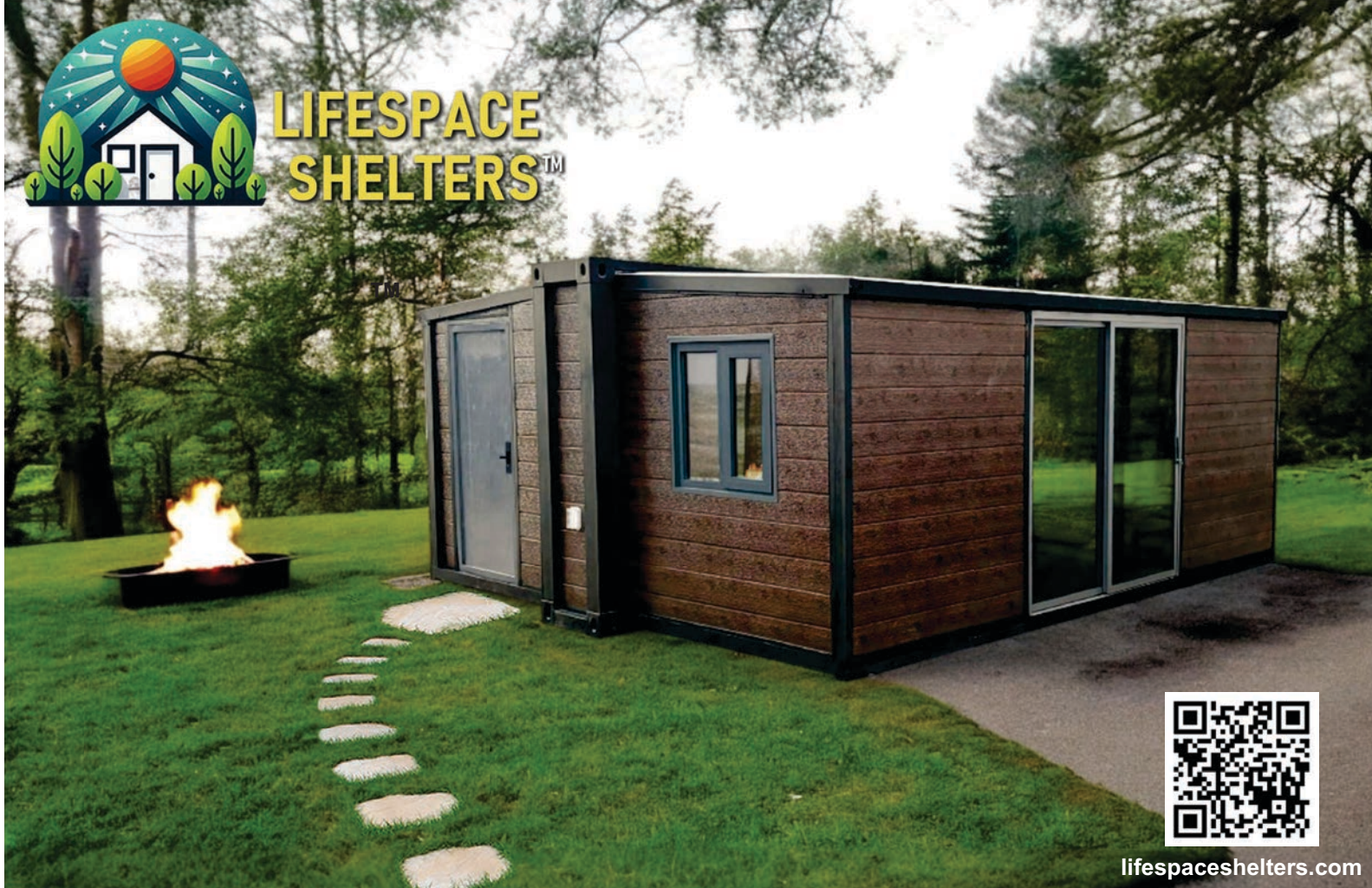
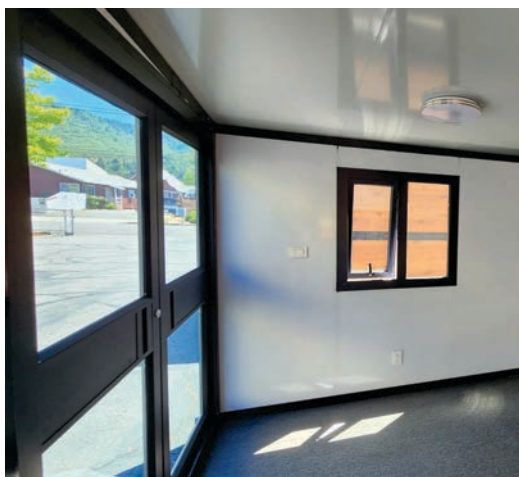




**LIFESPACE  
SHELTERS™**



[lifespaceshelters.com](http://lifespaceshelters.com)



Model shown with optional Glass Slider

## *Introducing* **LifeSpace 4/8™**

**Secure / Private  
Move In Ready  
Meticulously Engineered  
Open Floorplan  
Finished Interior  
Plug-In Power  
Commercial Grade  
“Best of Class”**

UtilityMate® Mfg. recognized & listed by:



**J.D. POWER**

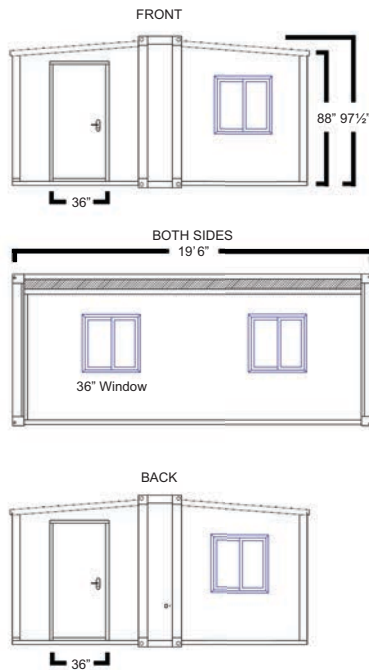
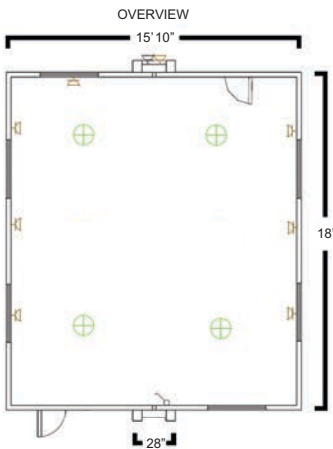




## 100% Steel Fabricated Frame



Configurable Floorplan



The **LifeSpace 4/8** models are built using our best Commercial Grade **ShieldCore™** Products, including:

- Insulated Metal Siding
- Steel Insulated Core Panels
- Six 36" Aluminum Framed, Dual Pane Tempered Glass, Adjustable Awning Windows
- Two 36" Exterior Steel Doors for Front and Back Entry
- Optional Side Wall Installed, Dual Pane Tempered Glass, Sliding Door (replaces one to two windows)
- ½" Fiber Cement Sub-Flooring
- SPC Grade Flooring
- Exterior 30 Amp Power Twist-Lock RV Connection

**Aluminum Window Frames / Exterior Steel Door w/ 4 in1 Dead Lock / Steel Insulated Core Wall**

