

SWANSBORO COUNTRY PROPERTY OWNERS ASSOCIATION

SWANSBORO COUNTRY COMMUNITY CENTER

6770 SLUICE STREET
PLACERVILLE, CALIFORNIA 95667
EL DORADO COUNTY

BARN WARS
& ASSOCIATES
6612 LOG CABIN LANE
PLACERVILLE, CALIFORNIA
95667



ITEM	NO.	DATE	DESCRIPTION
	2	12/19/22	85% WORKING DRAWINGS

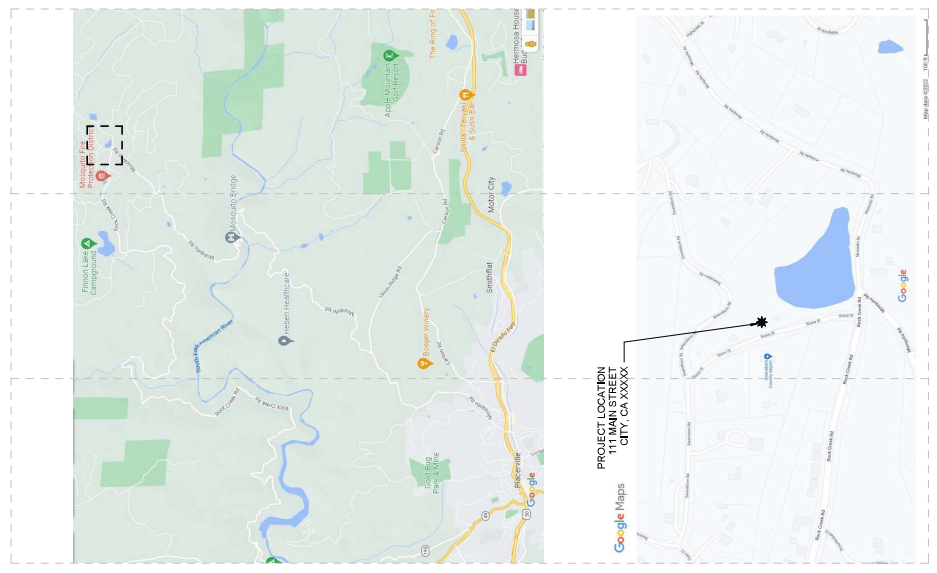
Project:
**SWANSBORO COUNTRY
COMMUNITY CENTER**
6770 SLUICE STREET
PLACERVILLE, CALIFORNIA 95667
EL DORADO COUNTY

SWANSBORO COUNTRY
PROPERTY OWNERS
ASSOCIATION

Sheet Title:
COVER SHEET

Project Number:
Sheet Scale:
Sheet Number:
G001

PROJECT LOCATION



SHEET INDEX

GENERAL COVER SHEET	SEQUENCE DESIGNATOR
G001 - CODE REVIEW	A001 - SEQUENCE DESIGNATOR
ARCHITECTURAL	DISCIPLINE DESIGNATOR
A101 - ARCHITECTURAL COVER SHEET	EXAMPLE: 01 - FLOOR
STRUCTURAL	EXAMPLE: 02 - SECTION
S1 - FOUNDATION	EXAMPLE: 03 - ETC
S2 - BEARINGS	EXAMPLE: 04 - ETC
S3 - CONCRETE SLAB	EXAMPLE: 05 - ETC
S4 - COLUMN LAYOUT PLAN AND DETAILS	EXAMPLE: 06 - ETC
S5 - FRAME SECTION AND DETAILS	EXAMPLE: 07 - ETC
S6 - END WALL FRAMING DETAILS	EXAMPLE: 08 - ETC
S7 - SIDE WALL FRAMING DETAILS	EXAMPLE: 09 - ETC
S8 - END WALL FRAMING DETAILS	EXAMPLE: 10 - ETC
ELECTRICAL	EXAMPLE: 11 - ETC
E1 - ONE LINE DIAGRAM AND SHEET SCHEDULES	EXAMPLE: 12 - ETC
E2 - SINGLE LINE DIAGRAM	EXAMPLE: 13 - ETC
E3 - TITLE EN	EXAMPLE: 14 - ETC
MASONRY	EXAMPLE: 15 - ETC
A1-A24 STRUCTURAL CALCULATIONS	EXAMPLE: 16 - ETC

18 SHEETS
(24X36)

2 SHEETS
24X36

TOTAL 20 SHEETS

PROJECT SCOPE

PROJECT SCOPE CONSISTS OF A NEW 1200 SF METAL CLAD BUILDING FOR THE RESIDENTS OF SWANSBORO COUNTRY HOME OWNERS ASSOCIATION (SCPOA). THIS BUILDING IS NOT INTENDED TO BE GENERAL PUBLIC USE. THIS COMMUNITY CENTER ONLY SERVES THE RESIDENTS OF SCPOA.

APPLICABLE CODES

PARTIAL LIST OF APPLICABLE CODES
 2022 CALIFORNIA ADMINISTRATIVE CODE (CACI), PART 1, TITLE 24, CCR
 2022 CALIFORNIA BUILDING CODE (CBC), PART 2, TITLE 24, CCR
 2022 CALIFORNIA MECHANICAL CODE (CMC), PART 4, TITLE 24, CCR
 2022 CALIFORNIA ELECTRICAL CODE (CEC), PART 5, TITLE 24, CCR
 2022 CALIFORNIA FIRE CODE (CFC), PART 6, TITLE 24, CCR
 CONTRACTOR TO ASSUME ALL RESPONSIBILITY FOR ANY AND ALL CODE PROVISIONS LISTED OR APPLICABLE CODES UNLISTED FOR THIS PROJECT.
 ARCHITECT ONLY ASSUMES RESPONSIBILITY FOR SHEETS THAT ARE STAMPED BY ARCHITECT OF RECORD (AOR). ALL OTHER SHEETS STAMPED BY ENGINEER OF RECORD (EOR) ARE THE RESPONSIBILITY OF THE RESPECTIVE ENGINEER.

