

Minutes of the
Board of Directors
Valhalla Five Association

The regular meeting of the Board of Directors for Valhalla Five Association was held at the Valhalla Party Room, Rochester MN at 5 PM on 05 February 2020.

Directors Dana Petron, Betsie Klopp, and Jay Torkelson were present. Also present were Dan Bredesen, Maintenance Supervisor, and Stacy Wilhelm, General Manager. Absent were Michael Chafee, Gigi Torkelson, David Dunn, and Janna Kjome.

The Board then reviewed the proposed changes to Association Five's property during the parking lot replacement project. The proposed changes include:

- Remove & replace with 5 feet sidewalks and new blacktop
- Remove stormwater bridges within sidewalks
- Connecting sump pumps to storm drain pipes.

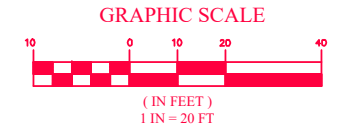
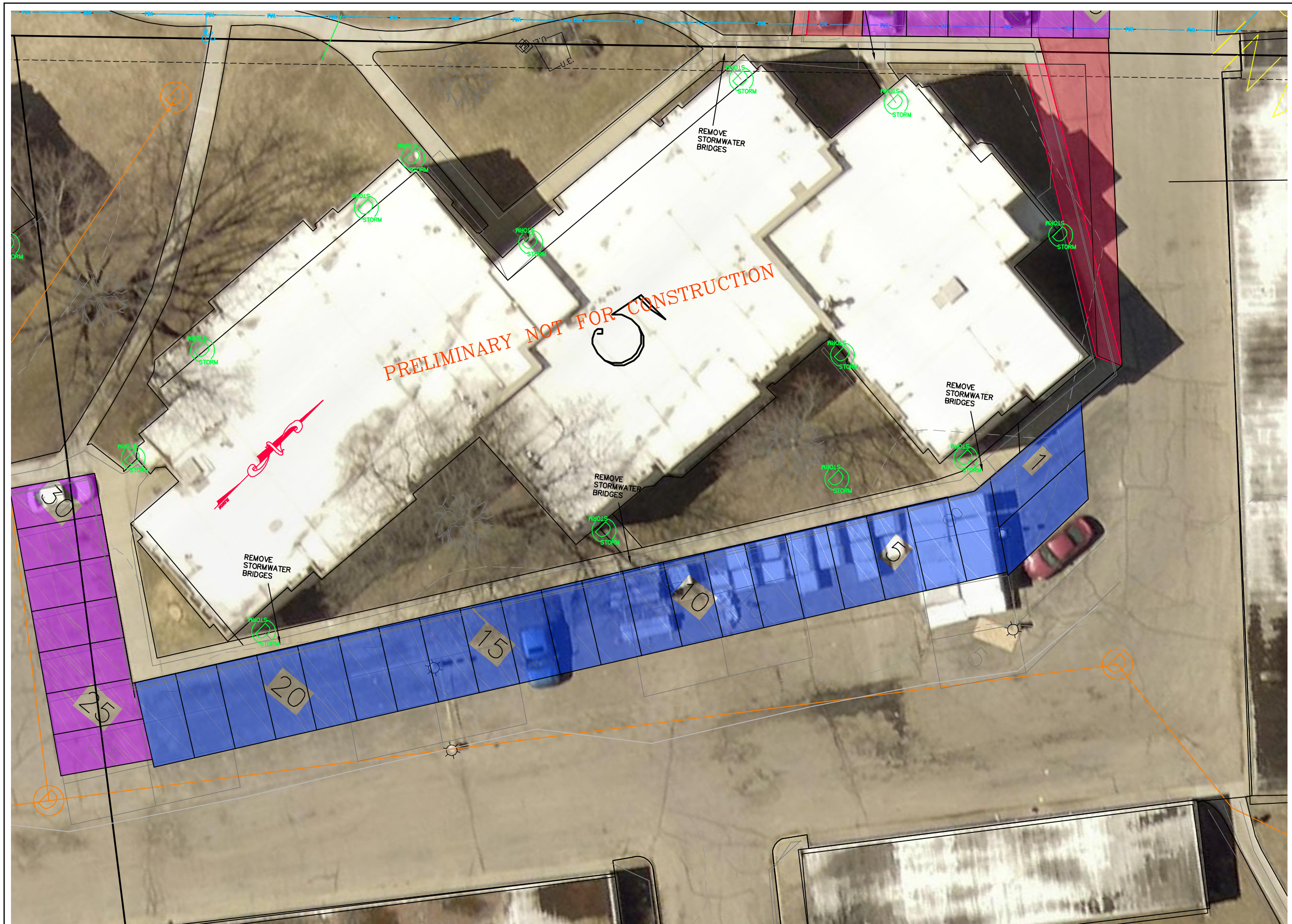
The Board was also made aware that the current caretaker will be moving at the end of May. Management will be posting the open position on the website and within the buildings.

The following resolutions were adopted:

RESOLVED, to approve the proposed parking lot changes.

There being no further business, the meeting was adjourned.

Submitted by Stacy Wilhelm



I HEREBY CERTIFY THAT THIS PLAN, SPECIFICATION, OR REPORT WAS PREPARED BY ME OR UNDER MY DIRECT SUPERVISION AND THAT I AM A DULY LICENSED PROFESSIONAL ENGINEER UNDER THE LAWS OF THE STATE OF MINNESOTA.

MARK R. WELCH
 REG. NO. 42736
 DATE _____

DATE: 11/21/2019
 Prepared For:
 VALHALLA CONDOS
 342 ELTON HILLS DR. NW
 ROCHESTER, MN 55901
 FILE NO.: 18-093 BASE

G³
G-Cubed
 14070 Hwy 52 S.E.
 Chatfield, MN 55923

ENGINEERING SURVEYING PLANNING
 Ph. 507-867-1666
 Fax. 507-867-1665
 www.gcg.io

DESIGNED: MRW
 DRAWN: ADB
 CHECKED: MRW

REVISED	BY	DATE
PRELIMINARY	ADB	12/10/19

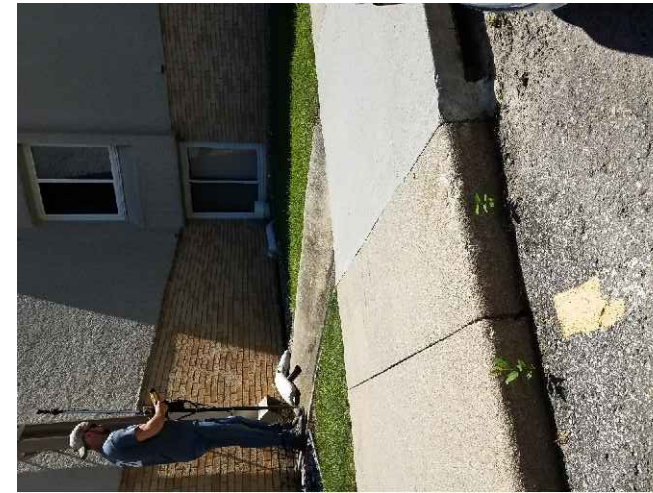
CITY OF ROCHESTER
VALHALLA CONDOS
 BENCHMARK:

RESTORATION ITEMS
BUILDING 5
SHEET 10
OF 26 SHEETS

BLD #5 MIDDLE REAR ENTRANCE



BLD #5 NW ROOF DRAIN TO SIDEWALK BRIDGE



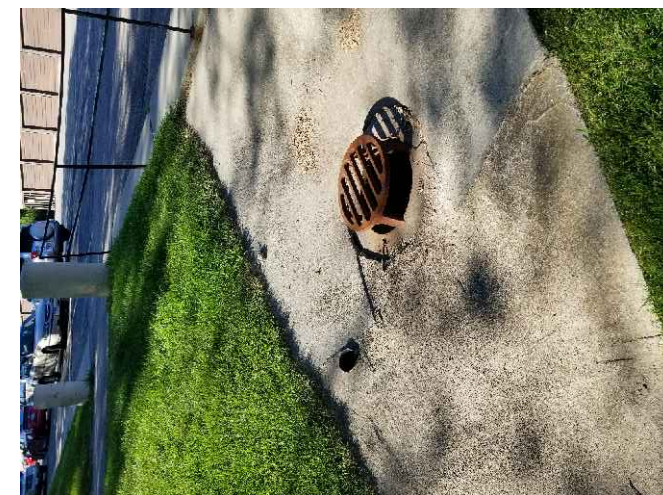
BLD #5 REAR INLET LOOKING NE



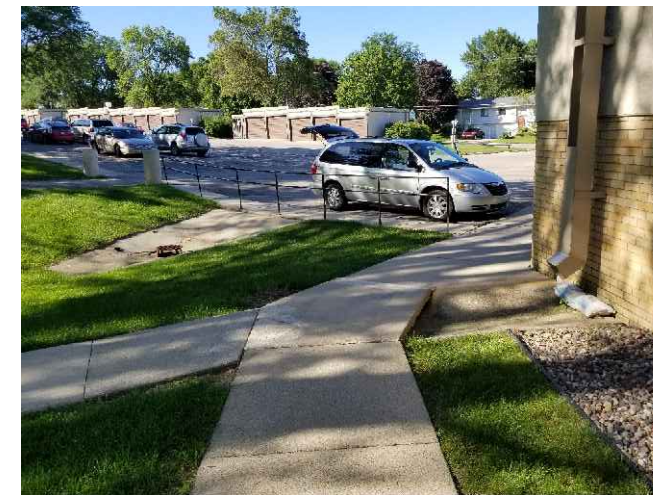
BLD #5 REAR INLET.2



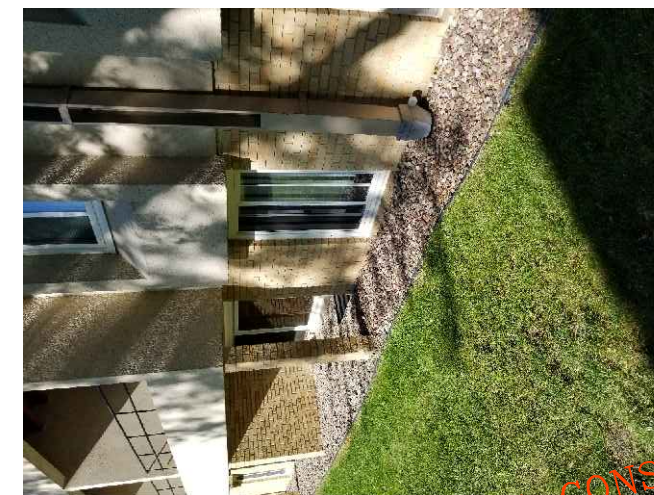
BLD #5 REAR INLET



BLD #5 REAR SIDEWALK BRIDGE TO INLET



BLD #5 SW CORNER ROOF DRAIN



BLD #5 WEST BACKYARD



PRELIMINARY NOT FOR CONSTRUCTION

Valhalla Condo's Quantity Table										
	Ex Sidewalk Removals (SQ FT)	Ex Bituminous Removals (SQ FT)	New Curb & Gutter (LF)	New Sidewalk (SQ FT)	New Bituminous (SQ FT)	Ex Light Poles	Subdrain Structures	Drain Tile (LF)	Pavement Striping (parking spaces)	
Bldg # 5	1074	19146		385	18654	3	1	330	23	
Valhalla Condo's Estimated Costs Table										
	Ex Sidewalk Removals (SQ FT)	Ex Bituminous Removals (SQ FT)	New Curb & Gutter (LF)	New Sidewalk (SQ FT)	New Bituminous (SQ FT)	Light Poles	Subdrain Structures	Drain Tile (LF)	Pavement Striping (parking spaces)	Totals:
Bldg # 5	\$ 1,074.00	\$ 16,274.10	\$ -	\$ 2,695.00	\$ 55,029.30	\$ 3,000.00	\$ 500.00	\$ 4,950.00	\$ 230.00	\$ 83,522.40

NOTES:

- REMOVE & REPLACE WITH 5' SIDEWALKS AND BITUMINOUS
- REMOVE STORMWATER BRIDGES WITHIN SIDEWALK
- CONNECT SUMP PUMPS TO STORM DRAIN PIPES

I HEREBY CERTIFY THAT THIS PLAN, SPECIFICATION, OR REPORT WAS PREPARED BY ME OR UNDER MY DIRECT SUPERVISION AND THAT I AM A DULY LICENSED PROFESSIONAL ENGINEER UNDER THE LAWS OF THE STATE OF MINNESOTA.
 MARK R. WELCH
 REG. NO. 42736

DATE: 11/21/2019
 Prepared For:
 VALHALLA CONDOS
 342 ELTON HILLS DR. NW
 ROCHESTER, MN 55901
 FILE NO.: 18-093 BASE

G³
G-Cubed
 14070 Hwy 52 S.E.
 Chatfield, MN 55923

ENGINEERING
 SURVEYING
 PLANNING
 Ph. 507-867-1666
 Fax 507-867-1665
 www.gcg.to

DESIGNED MRW
 DRAWN ADB
 CHECKED MRW

REVISED	BY	DATE
PRELIMINARY	ADB	12/10/19

CITY OF ROCHESTER
 VALHALLA CONDOS

BENCHMARK:

RESTORATION ITEMS
 BUILDING 5 IMAGES