

Mosaic Neighborhood Park

Leslie Berger LAND 376 SU24

# **K**ALEIDOSCOPE **M**EADOWS

Fort Collins, CO

# Project Statement

One of the latest districts in Fort Collins is Mosaic, located at the intersection of Vine Drive and Timberline Road. Mosaic Neighborhood serves as the meeting point between Fort Collins and the adjacent agricultural areas. At the heart of this neighborhood lies a spacious 20-acre open space and a community park. This project aims to establish a neighborhood park that symbolizes the kaleidoscope of diverse environments at this juncture, offering a range of leisurely and energetic activities within the park.

# Project Narrative

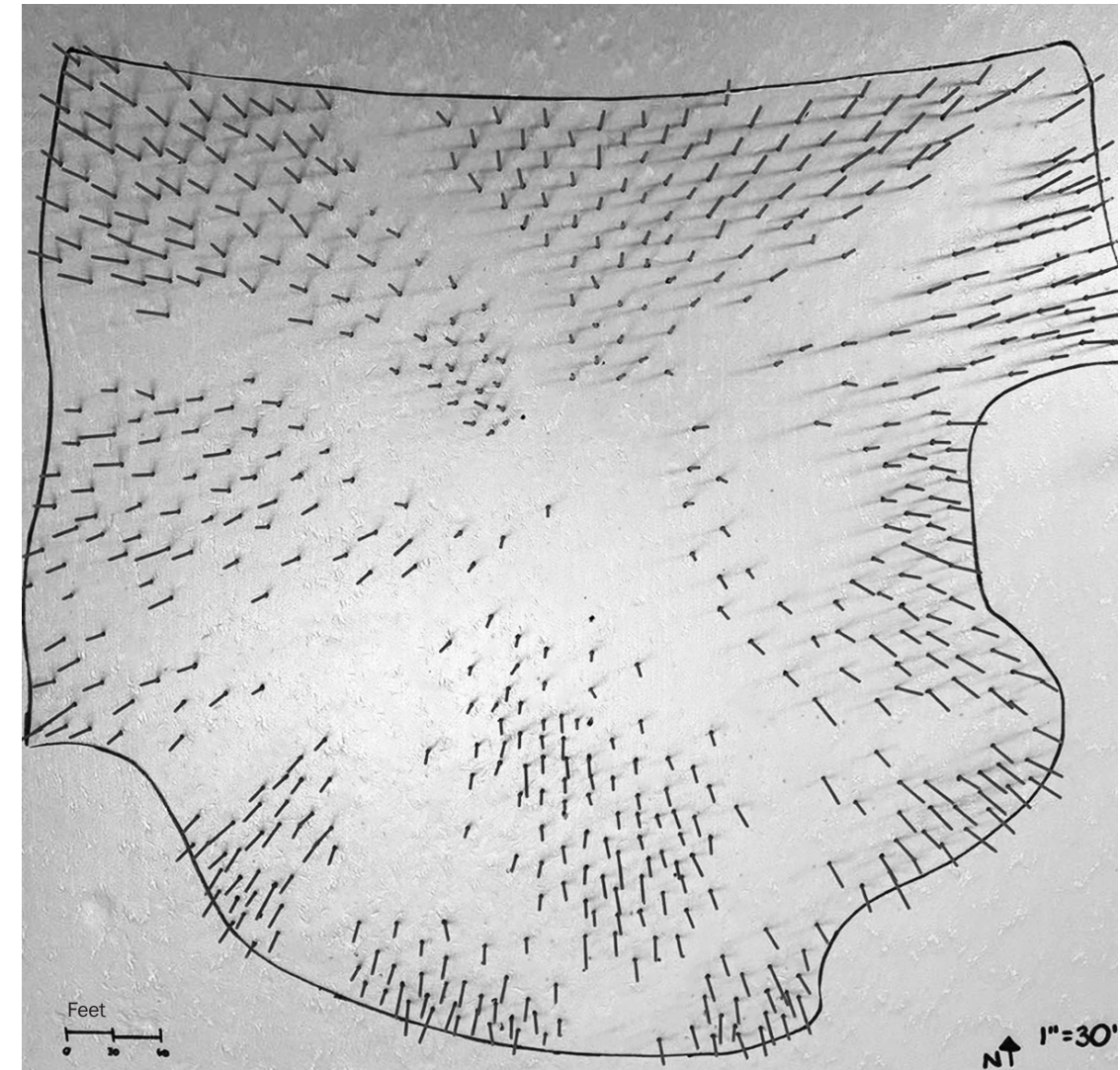
With the new Mosaic Neighborhood build-out nearly finished, attention shifts to the planned park area. The site spans 20 acres, with 12 acres preserved for open space and the remaining 8 acres allocated for community use. Surrounded by a blend of single-family homes and townhouses, the neighborhood accommodates residents of diverse ages and interests. This project aims to cater to a wide range of preferences and abilities across different age groups. This thoughtfully designed park aims to be the heart of the Mosaic Neighborhood, a place where residents can connect with nature, engage with their community, and create lasting memories with family and friends.

# Design Process



## Landform Study

The initial step in this project involved identifying the landforms that could be developed. Among several clay models that shaped spaces solely with land, this particular model was inspired by the neighboring houses, existing and created views, and the possible functions of the created spaces.



## Vegetation Study

In another project phase, the focus shifted to vegetation, specifically trees. One strategy included extensive planting to improve spatial connections. The primary objective during this phase was to create shaded walkways, preserve wildlife habitats, and provide respite from the strong Colorado sunlight.



## Idea Building

The following stage in the process emphasized materiality. Through crafting a photo collage of potential materials separate from landforms, vegetation, or programming, the materials were seamlessly integrated to shape a concept for the space. This step led to the creation of a second collage, which led to the design of a clearly defined path system, community gardens, and diverse activity areas.

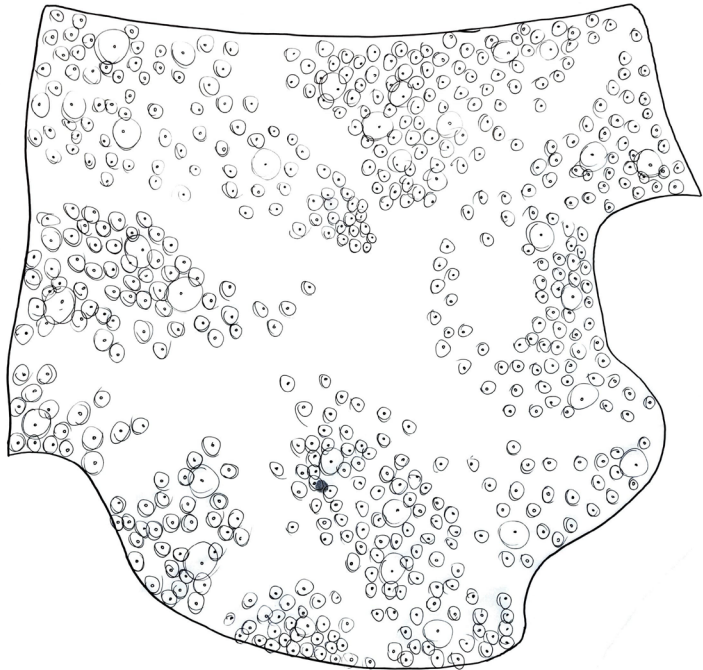




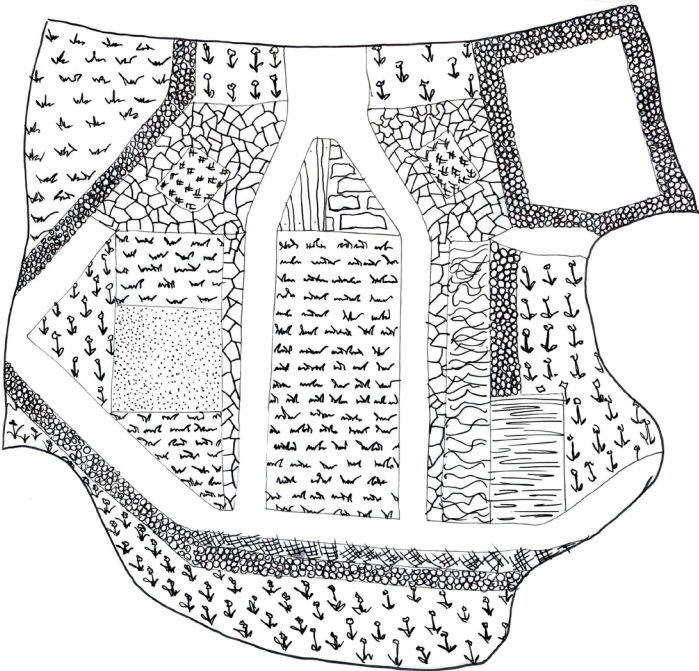
This series includes drawings depicting each stage that has brought us to this moment. The three smaller sketches show the progression and enhancement of each element.



Topography, derived from working clay model.

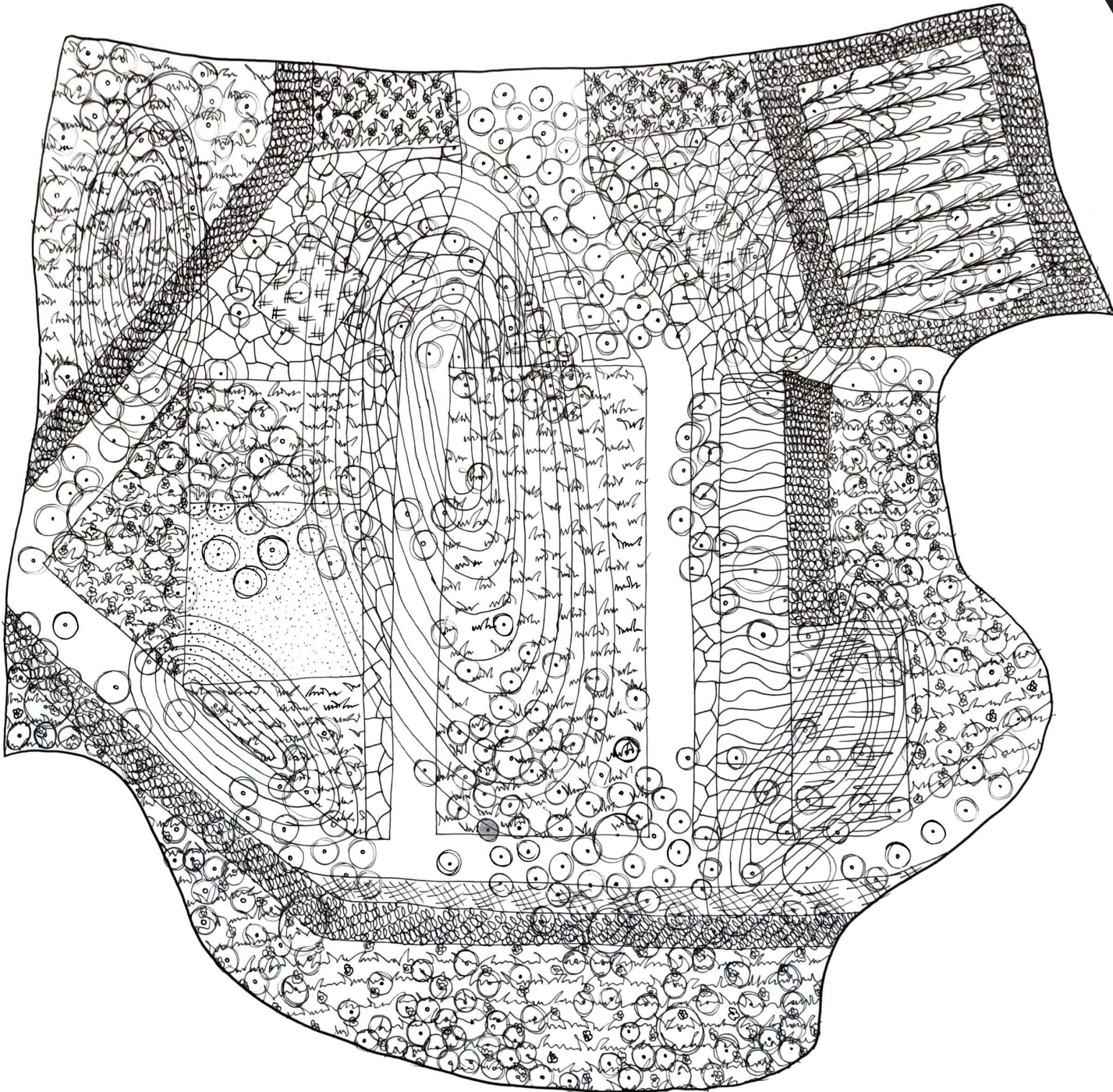


Vegetation, derived from working stick model.



Textures derived from photo collages.

The comprehensive illustration depicts the relationship formed by stacking the individual components together. This approach helps emphasize the interconnected parts and illuminates new perspectives that might not have been considered otherwise.

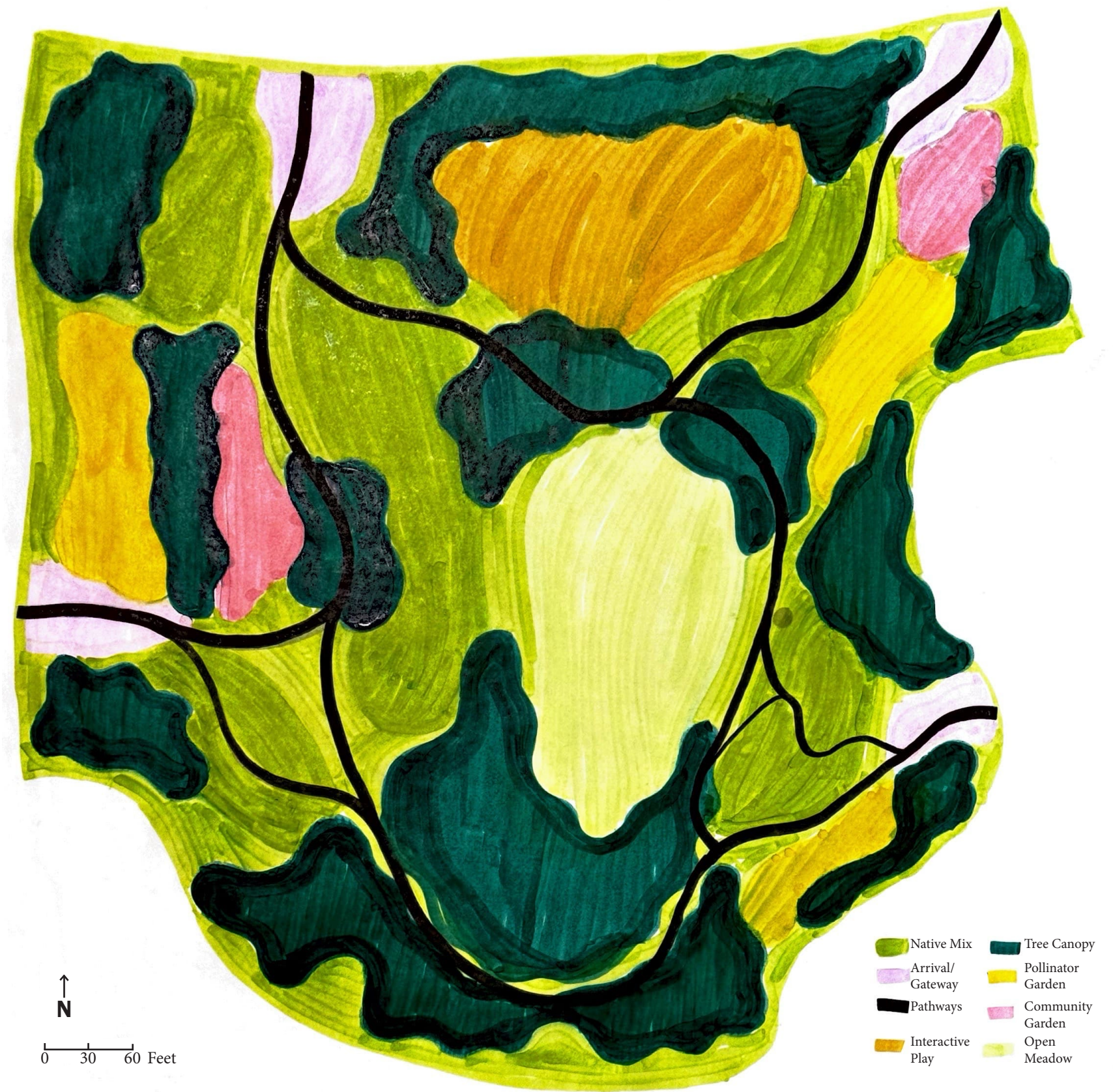


Comprehensive illustration: early master plan



## Master Plan 1

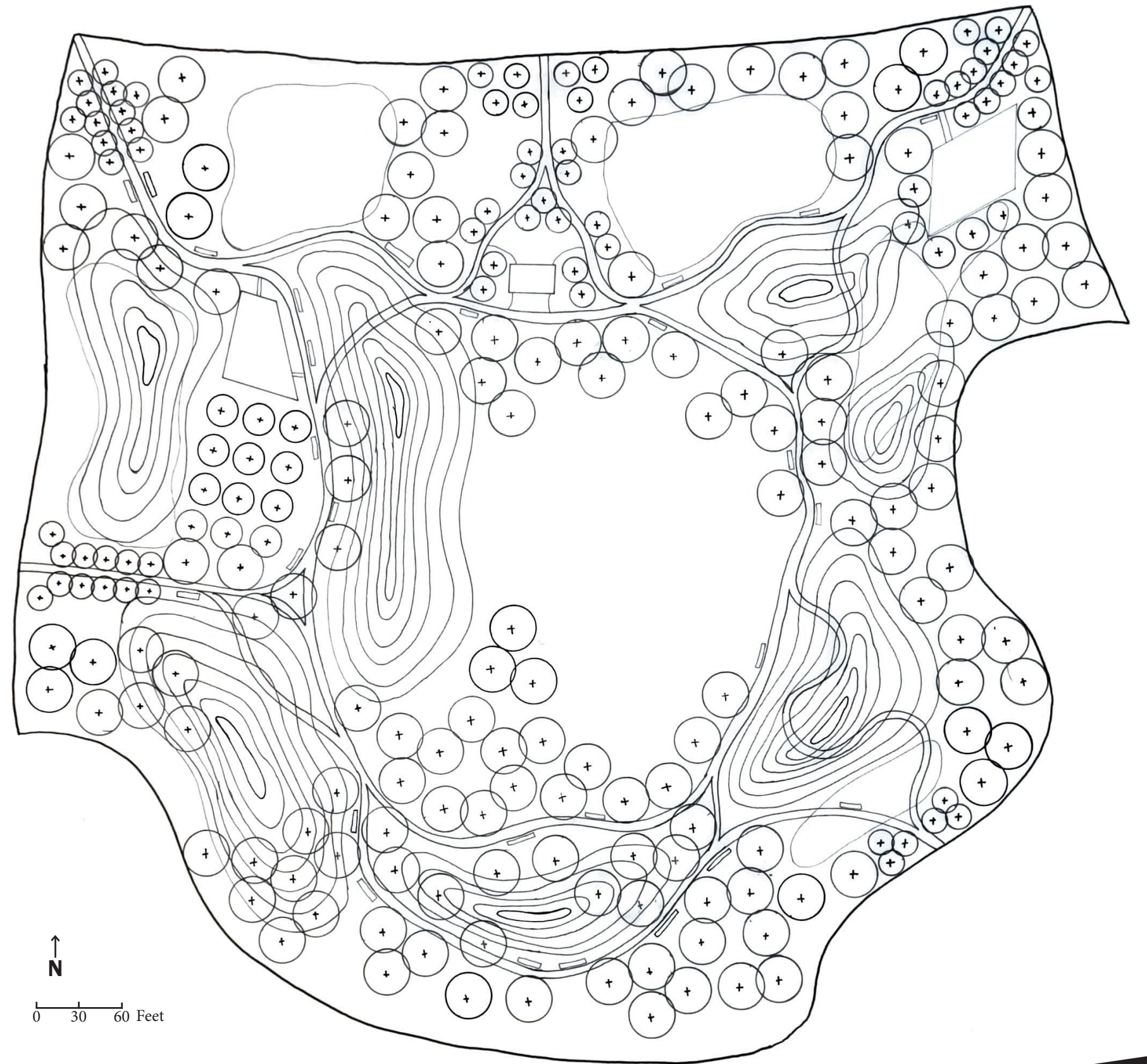
The initial master plan was developed based on the combined information from earlier stages. Emphasizing extensive vegetation, the plan aims to establish multiple resting areas within the park. This plan contains several impactful features that will shape future versions.





## Master Plan 2

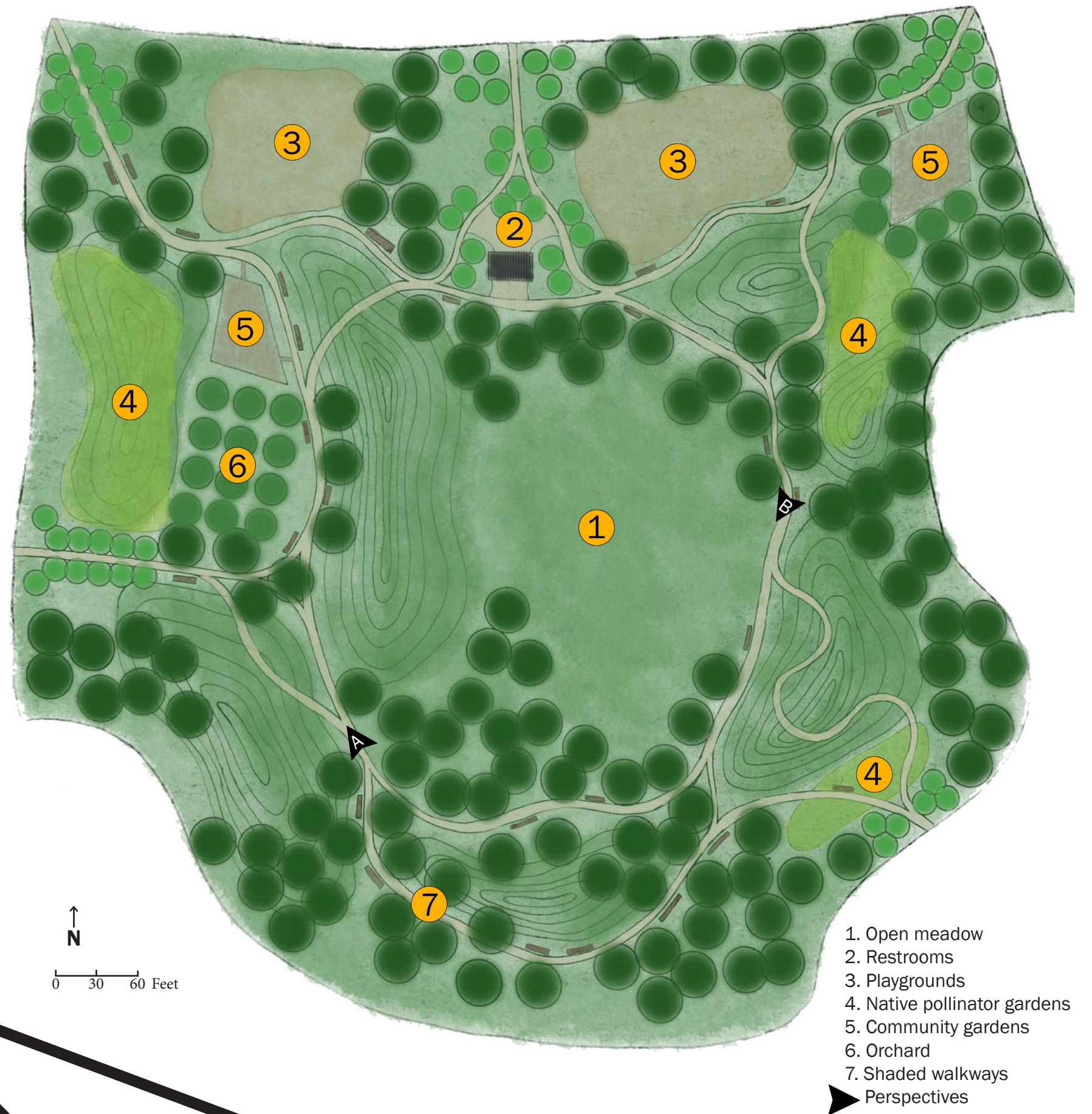
The final master plan evolved from various initial drafts of the primary plan. A meticulous arrangement of elements enhances the resilience of the wide array of activities stemming from the earlier phases. This single-colored blueprint showcases various levels, pathways, planned views, and expansive areas. Multiple features converge at the central meadow located within the park, resembling a kaleidoscope.





## Master Plan 1

The initial master plan was developed based on the combined information from earlier stages. Emphasizing extensive vegetation, the plan aims to establish multiple resting areas within the park. This plan contains several impactful features that will shape future versions.







## Perspective A

The illustration features a shaded pathway meandering through various landscapes. In the distance, the orchard and community garden are visible. Thoughtfully placed benches offer peaceful resting areas throughout the park.

## Perspective B

The illustration demonstrates how the community can make use of the open meadow. Residents have the freedom to decide how they want to utilize the meadow, with the option to walk along the paths on the opposite side of the tree buffer. Additionally, the image showcases the transformation that the different mounds would bring to the currently flat site.

