



**ALTZ**  
TECHNOLOGIES

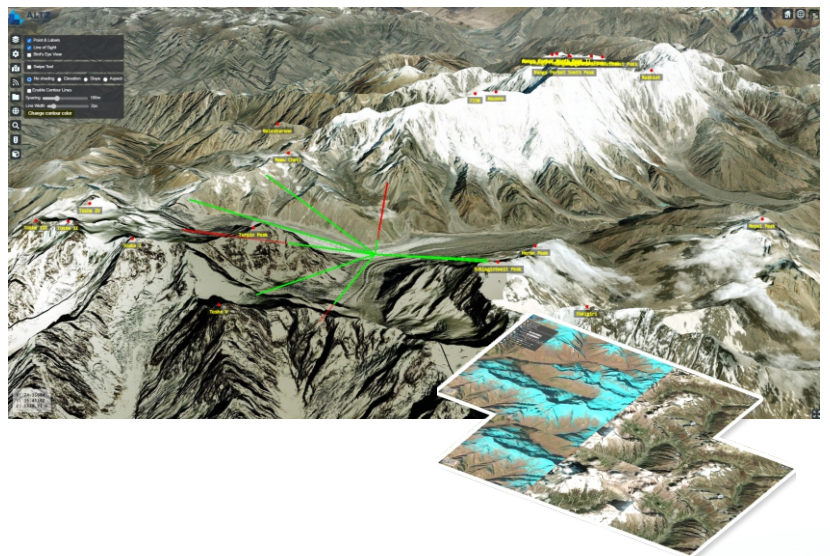
# LOCATION INSIGHTS AT SCALE

INNOVATE | ACCELERATE | DEVELOP



**ALTZ Technologies**, an international technology and services provider, focused on providing locational insights at scale, integrating platform, data sources and diverse technologies in a collaborative and connected environment for informed decision making.

**Adept** at combining space-based data, behavioral data, and business data with the help of sophisticated visualization techniques, leveraging AI/ML to augment geo-analytics that make sense of "where."



**Experts** in helping customers blend software engineering principles with a consulting mindset to derive locational intelligence across the enterprise. AltzTech platform is designed to provide a user-oriented, multi dimensional and intuitive solution in a secure and collaborative environment.





**Enterprise Solutions:** Geospatial Software and Technology solutions targeting customer-specific needs. Includes Imagery, Spatio-temporal data, location & behavioral data and workflows to generate analytics.

**Mobile Applications:** Leverage Smart Devices for portability and use of information for bringing in tactical and operational efficiency across a distributed workforce.



**Web Application:** Visually designed for ease of use while creating a seamless, advanced and technology agnostic environment.

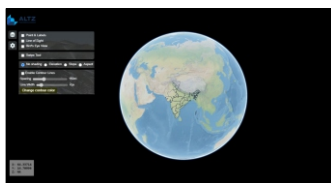


**Cloud Solution:** Cost-efficient and high-availability SaaS based offering, powered by on-demand computing engines for leveraging AI/ML technologies for actionable analytics of Geospatial Big Data



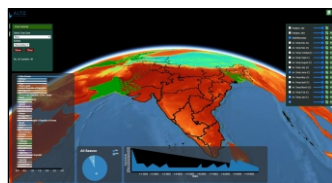


# Product Portfolio



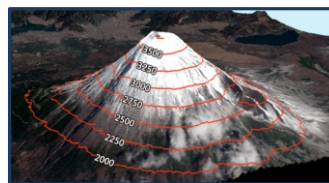
Cloud Native Application for Big Geospatial Data Management and Intuitive Visualization on 3D Platform by leveraging AI/ML technologies for actionable analytics. Provides a framework to develop customer-specific needs integrating Imagery, Sensors, Spatiotemporal data, location & behavioral data / workflows for making sense of "where".

[altz.enterprise.essential](http://altz.enterprise.essential)



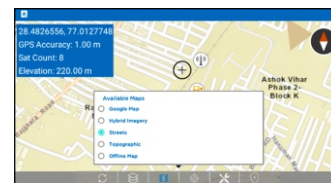
The Platform is designed for collaboration across dispersed data sources and formats such as sensors, location data, documents, reports, excel, scanned information, combining location analytics with AI, ML and NLP, to deliver Insights that present trend analytics, time-of-day/hour-of-day, segmentation, and origin-destination analytics.

[altz.enterprise.insights](http://altz.enterprise.insights)



An application to view the Digital Elevation Model (DEM) data on a 3D viewer to provide visualization of contour lines from raster data. Allow users multi-dimensional analyses of geospatial information. This will enable users to derive insightful outputs from complex spatial datasets that are contextual and easy to understand.

[altz.desktop.3DApp](http://altz.desktop.3DApp)



A mobile app developed for field workforce to perform spatial analysis, computation and visualization of field surveys, Update, Visualization, O&M, etc working on both online and offline mode. This platform agnostic App integrates with any industry standard GIS Server and has a user-friendly interface that is intuitive and adaptive for surveyors to use.

[altz.mobile.fieldapp](http://altz.mobile.fieldapp)

# Verticals



Defence & Intelligence



Environment Biodiversity & Climate change



Water Resources



Urban Renewal Mission



Commercial



Utilities





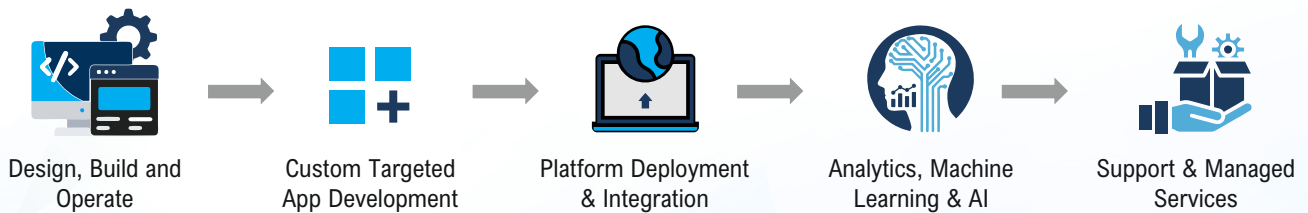
# Technology Practices

We Design, Develop, Integrate, Implement and Maintain technology solutions, both greenfield or on existing systems to scale and deliver a seamless unified analytics platform. Our partnerships with key technology OEMs cuts across the entire SDLC allowing us to create comprehensive and single window solutions eliminating the need to interact with multiple providers and implementers.



# Value Proposition

Imbibing faster innovation and scalability of projects



**AltzTech's Life Cycle Management Process for Quality Service Delivery**



\*All logos and company names are trademarks or registered trademarks of their respective holders.



**Vision** Helping our customers to actualize their digital strategy by harnessing the power of data and technology, from connected systems to autonomous processes.



**Mission** Create a collaborative and connected Geospatial platform for actionable analytics and informed decision making, and driving efficient processes for sustainable development.

### **Altz Technologies Pvt. Ltd.**

India Accelerator, BPTP Centra One, Golf Course Extension Road, Sector 61, Gurgaon (Delhi NCR), Haryana, India

[info@altztech.com](mailto:info@altztech.com) | [www.altztech.com](http://www.altztech.com)

