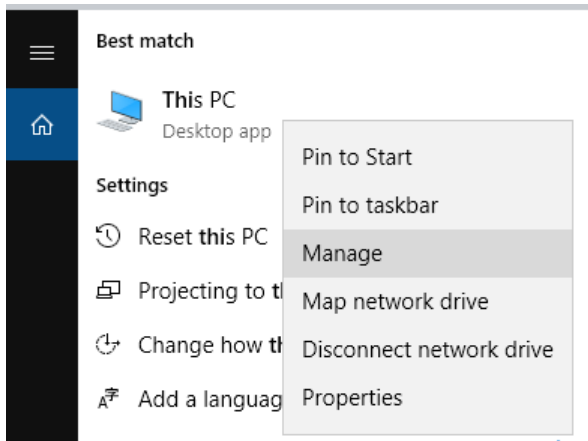
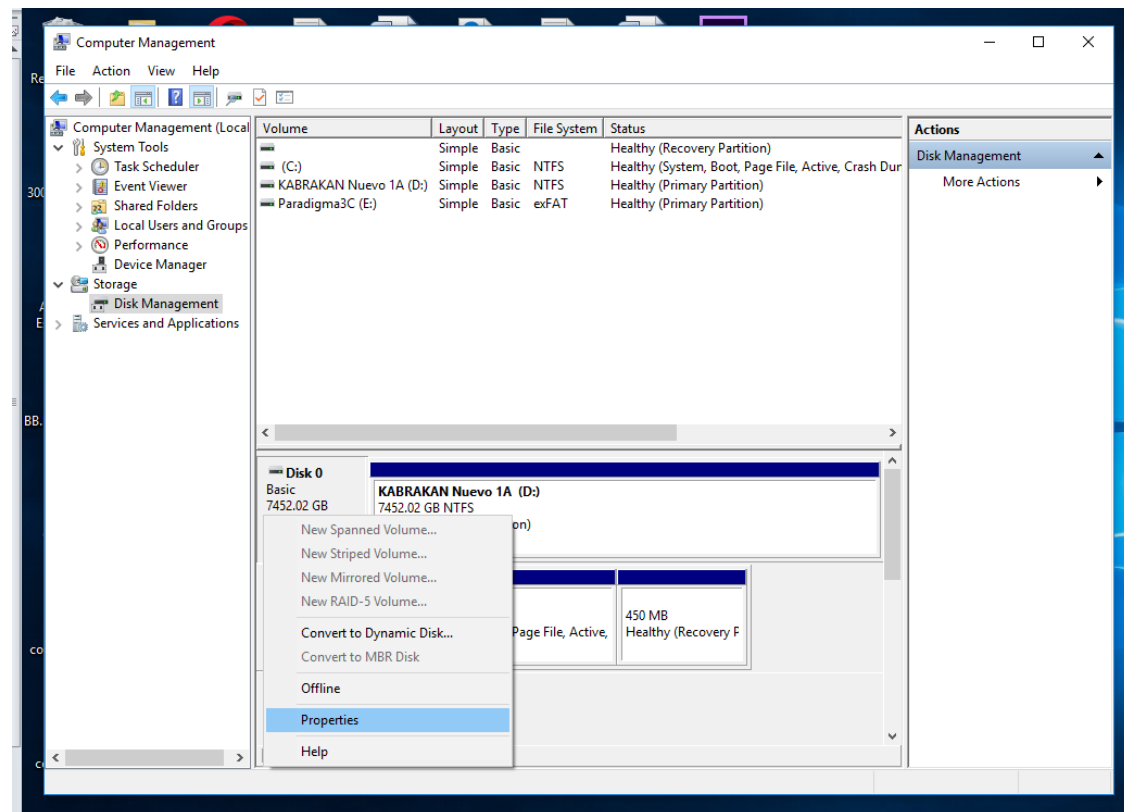


## Recomendaciones al instalar discos adicionales en Equipo.

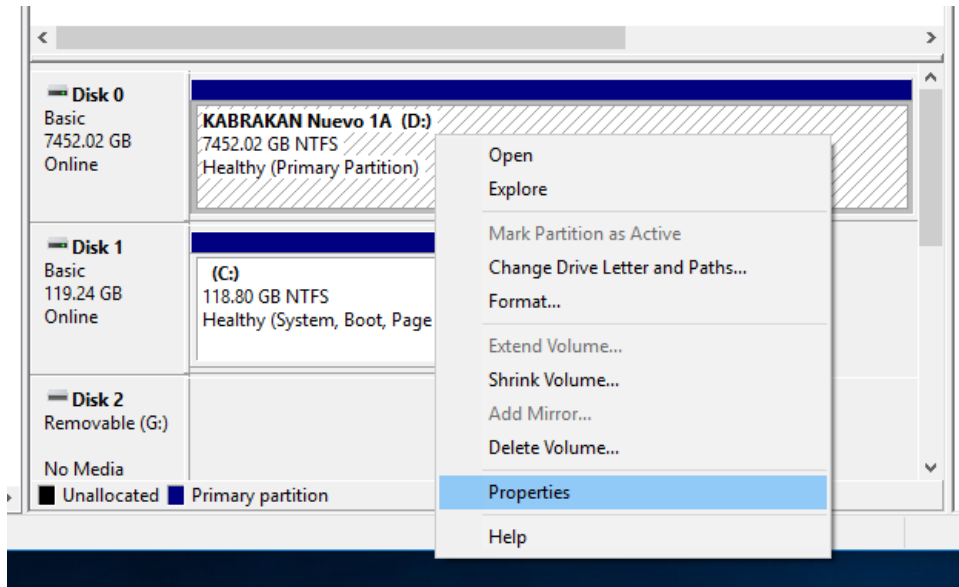
1. Click derecho en Equipo, Administrar.



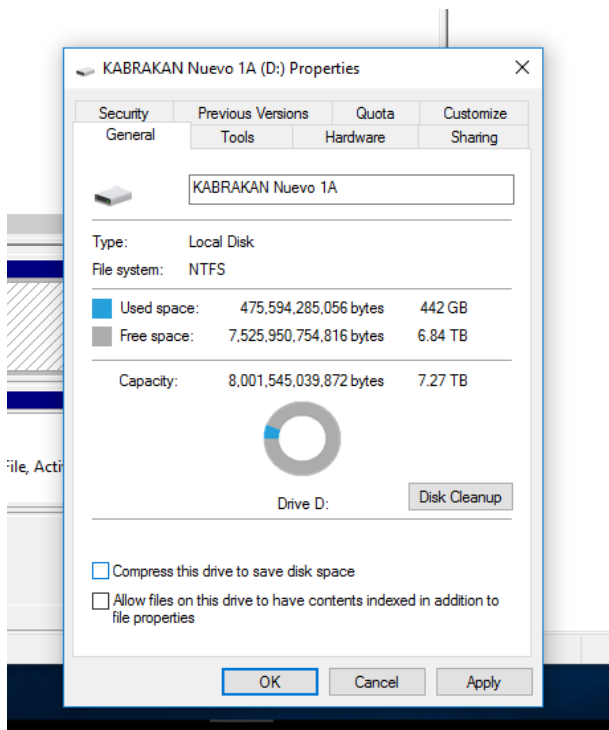
Seleccionar Administrador de Disco, Click derecho en Disk, seleccionar Propiedades, luego Políticas, seleccionar la casilla **Quick Removal**



2. Click derecho en el disco instalado, seleccionar propiedades.



General, deseleccionar la primera casilla y segunda casilla, en caso de estar seleccionada.




### 3. Ingresar a panel de control, opciones de encendido, deseleccionar la primera casilla, **Turn on fast startup**

> Power Options > System Settings

---

#### Define power buttons and turn on password protection

Choose the power settings that you want for your computer. The changes you make to the settings on this page apply to all of your power plans.


 [Change settings that are currently unavailable](#)

#### Power button settings

---



When I press the power button:

Shut down 

#### Shutdown settings

---

Turn on fast startup (recommended)

This helps start your PC faster after shutdown. Restart isn't affected. [Learn More](#)

Sleep

Show in Power menu.

Hibernate

Show in Power menu.

Lock

Show in account picture menu.