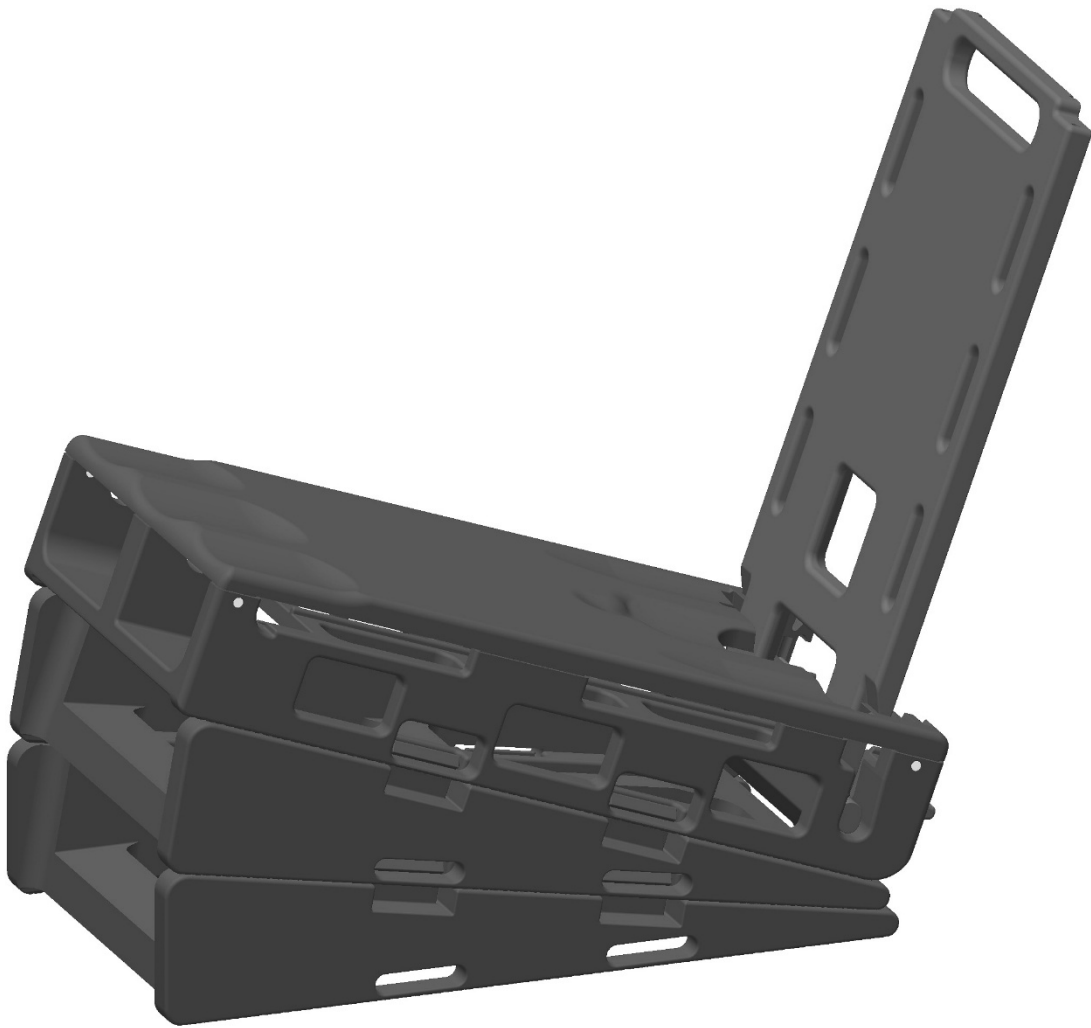




The Weight Bear[®] Technique Guide



(shown with optional wedges)

Part Number: OI-200 The Weight Bear Foot Positioning System

Part Number: OI-50 Optional Accessory Wedge Set

Patent pending.

LBL-01-001 Rev. 03

Weight Bear Technique Guide

Page 1 of 10

Product Description

The Orthios Weight Bear allows the physician to effectively orient the foot of a patient in a simulated weight-bearing position and maintain that position for images to be taken. With the use of one or more optional accessory wedges, the device allows for different heights and angulations of the foot for simulated weight-bearing when desired by the physician.

The Weight Bear is intended to be used in operating rooms, radiology departments, and/or orthopedic offices. The Weight Bear device is radiolucent (with radiopaque positioning strips), sterilizable, and reusable. The accessory wedges are radiolucent, sterilizable and reusable.

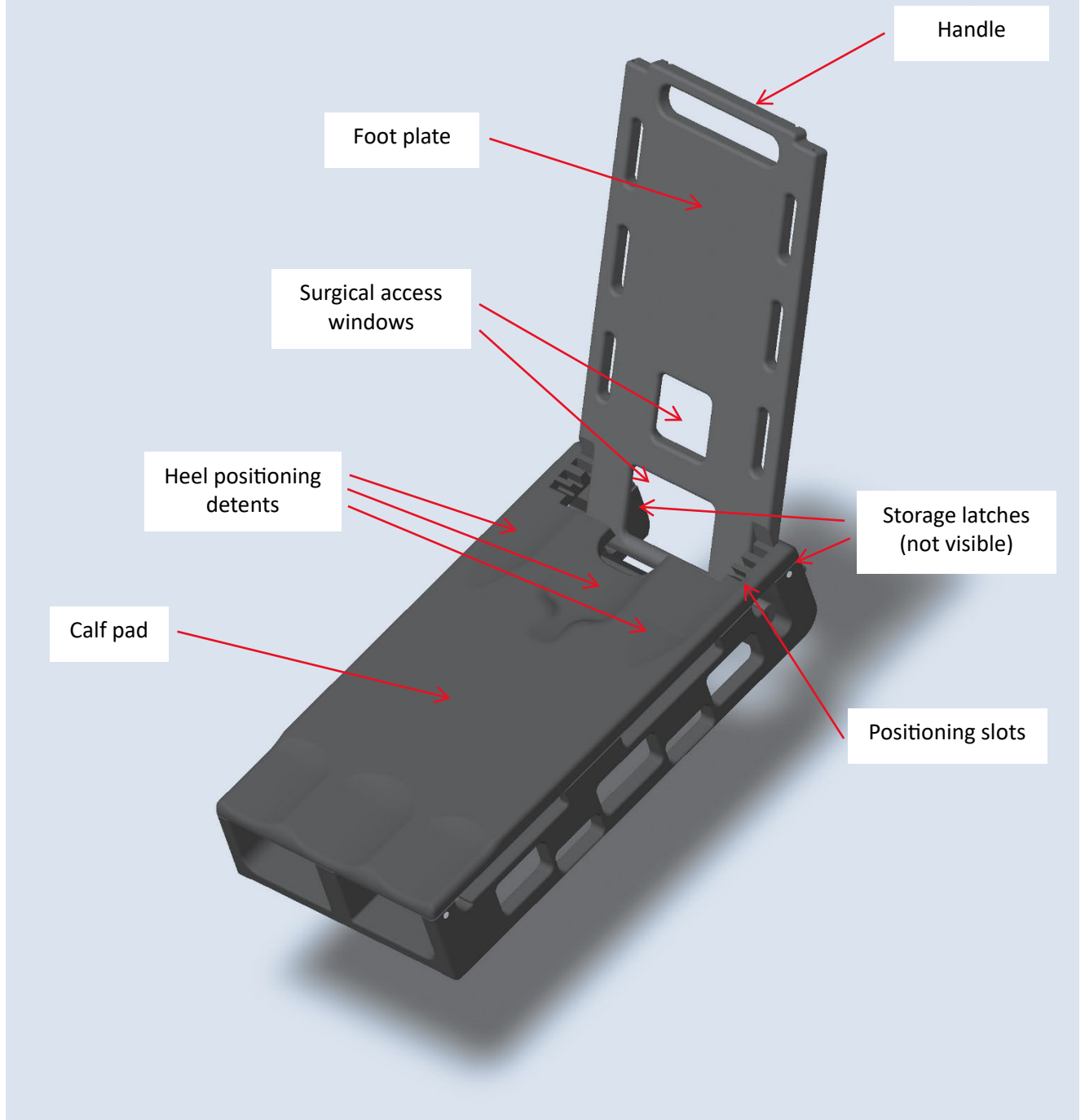
Indications

The Orthios Weight Bear provides a simulated weight-bearing position and maintains the orientation of the foot for images to be taken. The Weight Bear is intended to be used in operating rooms, radiology departments, and/or orthopedic offices.

Features

- 4 selectable hands-free loading angles for use during surgery and imaging
- Ideal stability and positioning for **MIS procedures**
- Quick and easy loading
- Autoclavable and Radiolucent
- Reproducible imaging in both A/P and Lateral positions including radiopaque positioning strips **for true lateral images**
- Access windows for surgical access for procedures such as **flatfoot and tibiototalcaneal arthrodesis (TTC)**
- Optional bump wedges for positioning lower leg at varied working positions

Parts Identification



Technique Steps

Preparation

1. The Weight Bear is provided non-sterile and must be sterilized before use.

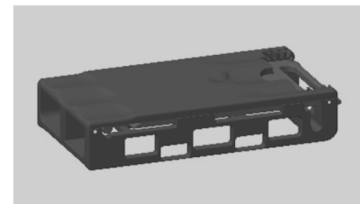
2. The Weight Bear will be received from its sterilization wrapped in a sterile barrier. Remove the sterile barrier material.



3. Ensure the handle latches are in the locked position. The Weight Bear can be moved by using the handle only when the latches are in the locked position.



4. Drape the surgical table as required and place the Weight Bear on top of the surgical drapes where the affected foot will be positioned. Ensure that the Weight Bear remains in full contact with the surgical table.



5. Position the affected foot with the heel in the center, right, or left heel cup detent of the calf pad. A folded surgical towel (or towels) may be positioned between the heel and the Weight Bear to aid in positioning the foot.



Positioning for Loading (deployed)

1. Unlatch the foot plate by pushing both locks down.



2. Pull the foot plate out of the base by grabbing the handle and pulling it horizontally from the base.



3. Rotate foot plate and while maintaining outward pressure push it towards the patient's affected foot. Push the foot plate down into the locking slots at the desired angle.



4. Ensure that the plantar aspect of the affected foot is in contact with the foot plate.



5. Perform procedure and/or radiographic imaging as required.



- Note: There are radio opaque indicators that should be aligned to confirm a true lateral position for lateral imaging.



Correct (1 solid line)



Incorrect (2 solid lines)

Returning to Storage Position (nested)

- Pull up vertically on the handle to disengage the foot plate from the locking slots.
- Using the handle, rotate the foot plate to a horizontal position.



3. Push the foot plate into the base.



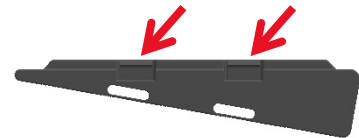
4. Continue to push the foot plate into the base until it stops. Lock the latches if it will be transported.



Use of Optional Wedges

Optional Wedges can be used individually or combined to elevate the lower leg and angulate it as desired.

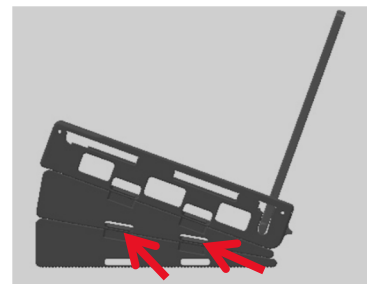
1. Ensure that the tabs in the top of the wedge engage with the base of The Weight Bear.



2. If multiple wedges are used ensure that the tabs of each additional wedge engage with the base of the other wedge in use.



3. To disconnect the wedges from each other, push the tabs inwards and move the wedges to separate them



4. To disconnect a wedge from The Weight Bear, position the thumbs in one of the belt loop slots in the base on each side of The Weight Bear and the forefingers into the slots beneath, and push the thumbs inward to release the tab of the wedge from the base of The Weight Bear. Lift The Weight Bear to separate them.



Completion of surgical procedure

When surgery is completed and all radiographic images have been taken, The Weight Bear must be returned to its stored and latched position.

1. Ensure the foot plate is stored. Engage the two latches by pushing them up.



2. The Weight Bear can be removed from the surgical table and transported by utilizing the handle.



3. The Weight Bear must be cleaned and resterilized before its next use.

CLEANING:

1. Unlatch the device and extend the foot plate. Rotate the foot plate to the upright position.
2. Rinse all surfaces of the device with warm (35-40 °C) tap water for a minimum of two (2) minutes to remove gross contamination.
3. Soak the device in ASP Enzol pH neutral enzymatic detergent solution* for fifteen (15) minutes.
4. While in the detergent, scrub all interior and exterior surfaces of the device at least three (3) repetitions with a soft brush and/or pipe cleaner; repeatedly flush any holes, crevices, and pinned or hinged areas at least three (3) repetitions with the same detergent solution using a syringe.
5. Rinse all surfaces of the device with warm (35-40 °C) tap water for a minimum of two (2) minutes.
6. Soak the device in freshly prepared ASP Enzol pH neutral enzymatic detergent solution* for fifteen (15) minutes.
7. While in the detergent, scrub all interior and exterior surfaces of the device at least three (3) repetitions with a soft brush and/or pipe cleaner; repeatedly flush any holes, crevices, and pinned or hinged areas at least three (3) repetitions with the same detergent solution using a syringe.
8. Rinse all surfaces of the device with reverse osmosis deionized (RO/DI) water for a minimum of two (2) minutes.
9. Sonicate the device for a minimum of ten (10) minutes in freshly prepared ASP Enzol pH neutral enzymatic detergent* solution.
10. Rinse all surfaces of the device thoroughly with tap water
11. Rinse all surfaces of the device thoroughly /flush with RO/DI water for a minimum of two (2) minutes.
12. Dry all surfaces of the device with clean compressed air or a soft, lint free, clean cloth.
13. Visually inspect for cleanliness. All visible surfaces, internal and external, should be visually inspected. If necessary, reclean until it is visibly clean.

* - A pH neutral enzymatic detergent solution equivalent to ASP Enzol may also be used.

STERILIZATION AND DRYING:

1. Ensure the Weight Bear foot plate is stored and the latches are in the upright locked position.
2. Double wrap the device in an FDA cleared wrap.
3. Autoclave according to the following parameters:

Cycle Type	Parameter	Minimum Set Point
Prevacuum 270 °F (132 °C)	Exposure Temperature	270 °F (132 °C)
	Exposure Time	8 minutes
	Dry Time	60 minutes

the weight bear



Orthios Innovations, LLC
78 John Miler Way, Suite 1018
Kearny, NJ 07032
914-924-5766
www.orthiosinnovations.com

Copyright © 2026 Orthios Innovations, LLC. All rights reserved.