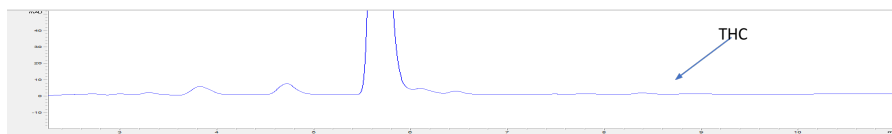
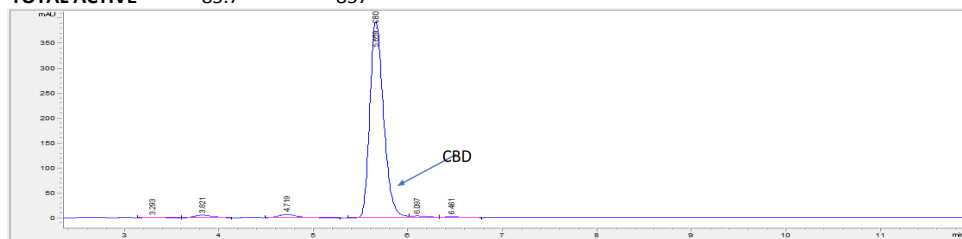
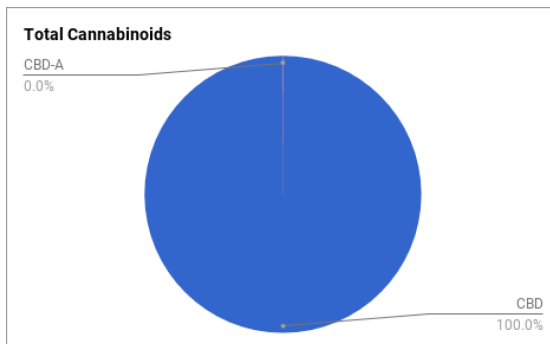


TEST ID: 102017KM DATE: 10/20/2017  
 OIL BATCH No.: CONO17-41-A  
 TYPE: Phytocannabinoid Rich Hemp Oil, Zero THC

## POTENCY RESULTS

	Wt. (%)	(mg/g)
<b>CBD</b>	85.7	857
<b>CBDv</b>	< 0.01	< 1.0
<b>CBG</b>	ND	ND
<b>CBE</b>	< 0.01	< 1.0
<b>CBN</b>	< 0.01	< 1.0
<b>THC</b>	ND	ND
<b>CBC</b>	< 0.01	< 1.0
<b>THC-A</b>	ND	ND
<b>CBD-A</b>	< 0.01	< 0.1
<b>MAX THC</b>	ND	ND
<b>MAX CBD</b>	85.7	857
<b>TOTAL ACTIVE</b>	85.7	857



## VISUAL INSPECTION

Clear, amber oil (liquefies upon heating at 70C, if in solid form)

## LAB INFORMATION

Folium Biosciences  
 615 Wooten Road Suite 110  
 Colorado Springs, CO 80915

Raj Gupta, Ph.D., Lab Director  
 info@foliumbiosciences.com  
[www.foliumbiosciences.com](http://www.foliumbiosciences.com)

TEST ID: 102017KM DATE: 10/20/2017  
 OIL BATCH No.: CONO17-41-A  
 TYPE: Phytocannabinoid Rich Hemp Oil, Zero THC

## TERPENES RESULTS

	Wt. (%)		Wt. (%)
$\beta$ -Bisabolene	1.0-3.0	Camphene	0.1-0.2
$\beta$ -Farnesene	1.0-2.0	E-Farnesene	0.1-0.2
Guaiol	0.5-2.0	Farnesol	0.1-0.2
$\beta$ -Maaliene	0.5-2.0	$\alpha$ -Bisabolol	< 0.1
Calarene	0.5-1.5	P-Cymene	< 0.1
$\beta$ -Caryophyllene	0.1-1.0	Linalool	< 0.1
$\alpha$ -Humulene	0.1-1.0	Myrcene	< 0.1
Cadinene	0.1-1.0	Phytol	< 0.1
$\alpha$ -Gurjunene	0.1-0.5	Isopulegol	< 0.1
d-Limonene	0.1-0.5	Terpinene	< 0.1
Nerolidol	0.1-0.5	Geraniol	< 0.1
$\alpha$ -Pinene	0.1-0.5	Myrcene	< 0.1
Aristolene	0.1-0.3	$\gamma$ -Terpinene	< 0.1
Eucalyptol	0.1-0.2	$\delta$ -3-Carene	< 0.1

## RESIDUAL SOLVENTS RESULTS

Propane	Not Detected	Pentane	Not Detected
Isobutane	Not Detected	Isopropanol	Not Detected
Butane	Not Detected	Hexane	Not Detected
Ethanol	Not Detected	Acetone	Not Detected

## PESTICIDES RESULTS

Acequinocyl	Not Detected	Spinosad	Not Detected
Pyrethrium	Not Detected	Spirotetramat	Not Detected
Spiromesifen	Not Detected	Bifenazate	Not Detected
Abamectin	Not Detected	Fenoxycarb	Not Detected
Imidacloprid	Not Detected	Paclbutrazol	Not Detected

## HEAVY METALS

Cadmium	Not Detected
Lead	Not Detected
Arsenic	Not Detected
Mercury	Not Detected