

Gillswigworld



BAME WIGS

GVA Human Wigs

GVA Human wigs collection is re-coloured , heat styled, with lace parting, very stylish and water friendly. These wigs are extremely lightweight, easy - to - wear with adjustable stripes.



AMNA

LENGTH: 10"

WEIGHT: 96 g

OPTIONAL COLOR:



2



4



99J



DYF1B/BLUE



DYF2/99J



F2/33



P1B/30



P4/30



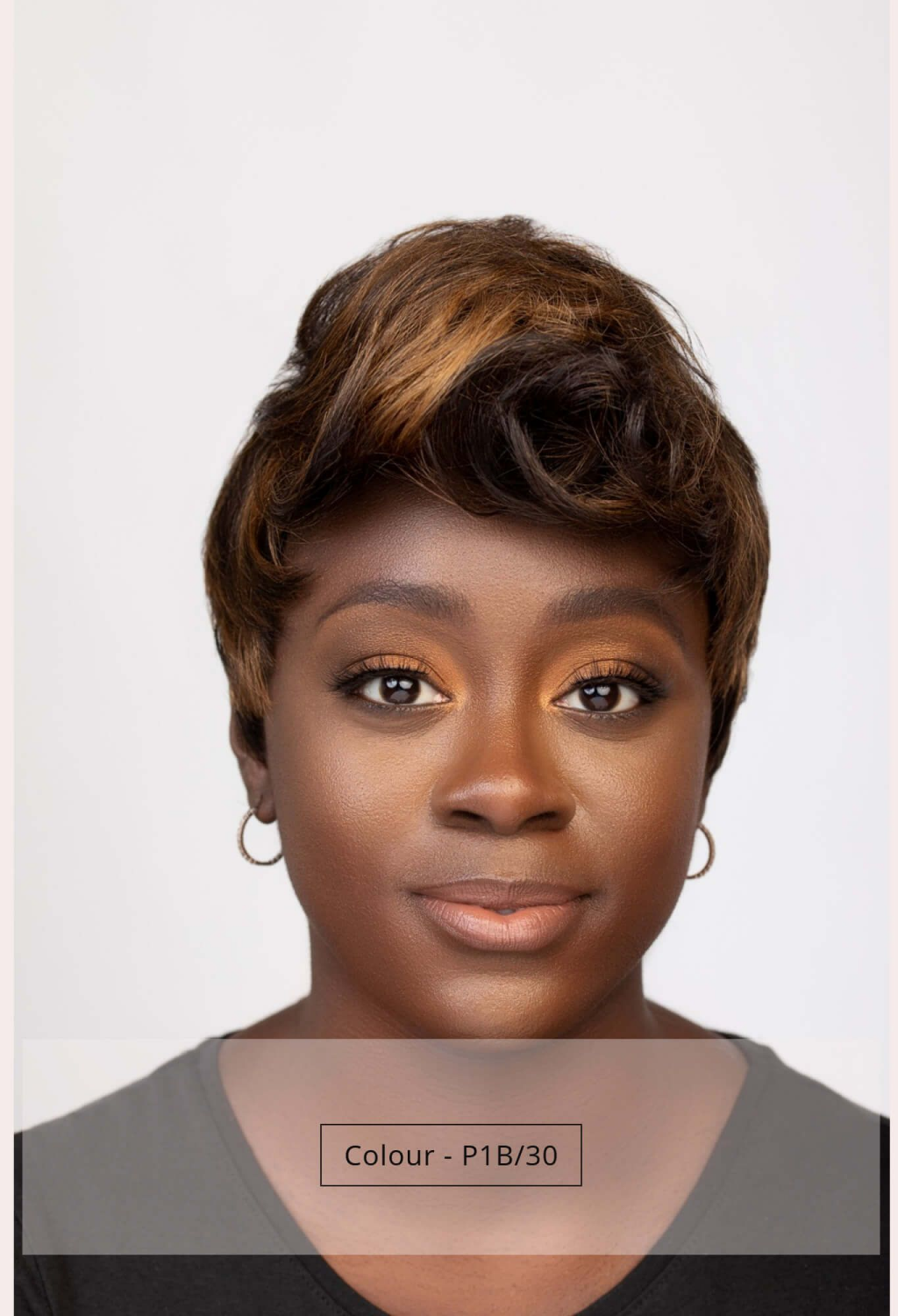
Colour - P4/30

DEVON

WIG CAP:



COLOR CHOICE:



Colour - P1B/30



TEXTURE CUT



LENGTH: 9 inch

WEIGHT: 91 g

OPTIONAL COLOR:



1B



2



4



99J



DYF 1B/BLUE



DYF 1B/RED



DYF 2/99J



F 1B/99J



P 1B/30



P 4/30



Colour - 99J



LACE MADANI

LENGTH: 9 inch

WEIGHT: 132 g

OPTIONAL COLOR:



2



4



99J



TT1B/27



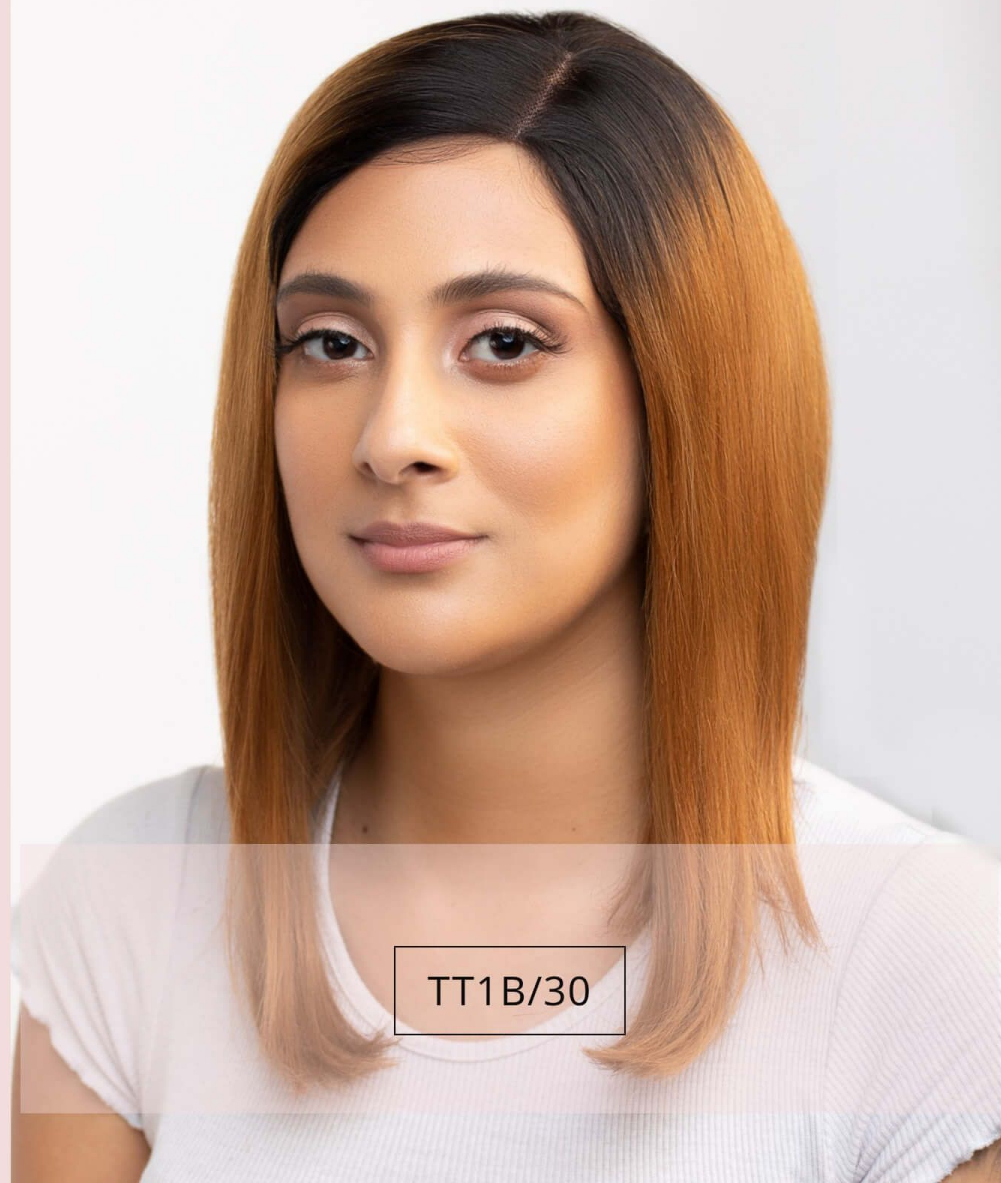
TT1B/30



TT1B/99J



TT1B/BLUE



TT1B/30



LACE ALL F PAGE



LENGTH: 16 inch

WEIGHT: 146 g

OPTIONAL COLOR:



2



4



99J



T11B/27



T11B/30



T11B/99J



T11B/BLUE



Colour - 99J



TRIXIE

WIG CAP:



ITEM: RJH-M160509A

COLOR CHOICE:



Colour - 1B/ Blue



1B

PERFECT

WIG CAP:



ITEM: RJH-S161213ARP

COLOR CHOICE:



2#

4

99J



DYF 1B/BLUE

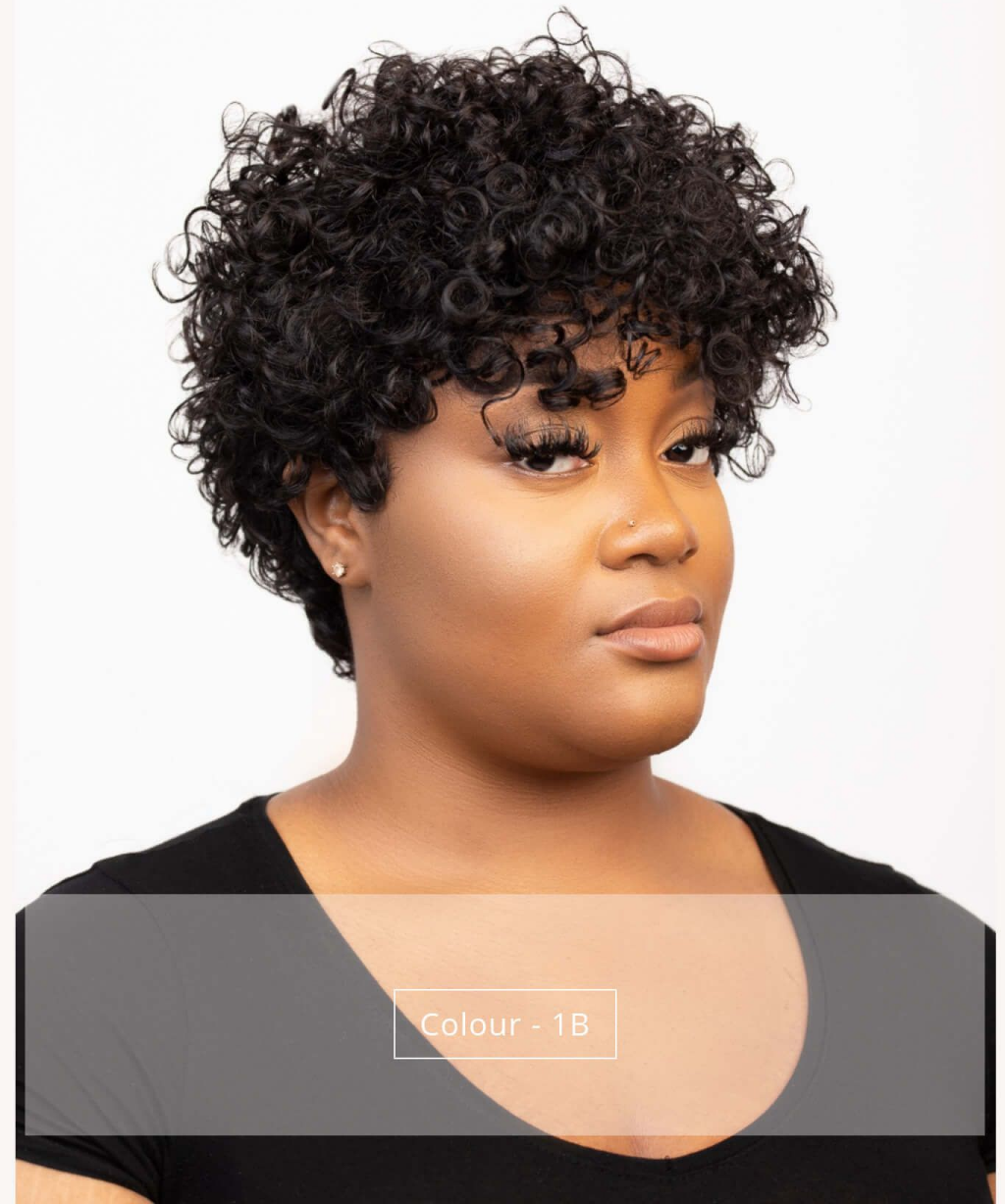
DYF 1B/RED

F2/33

F1B/99J

P1B/30

P4/30

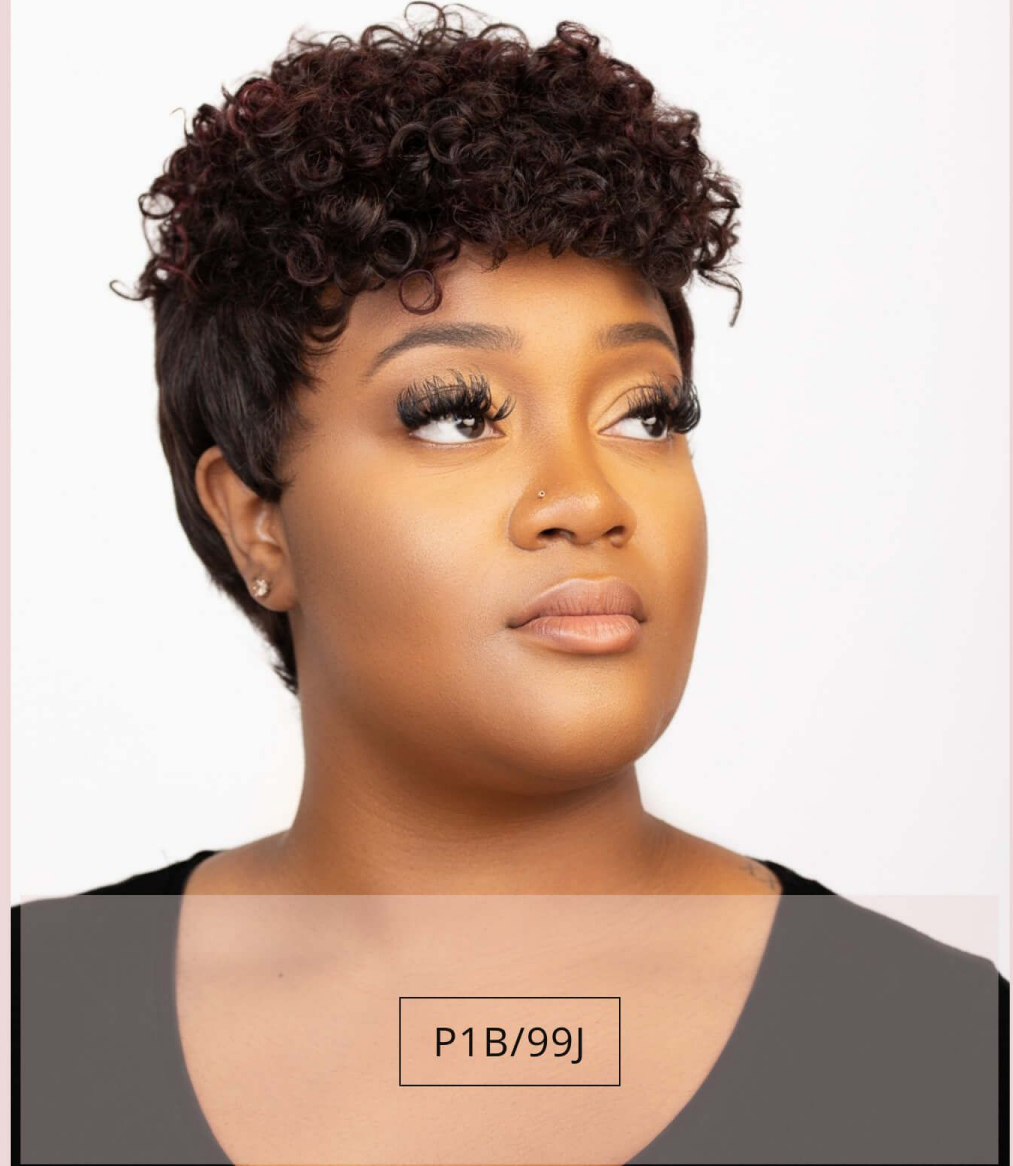


Colour - 1B

MOHAWK



CHOICE:



P1B/99J



LACE CYNTHIA

LENGTH: 10 inch

WEIGHT: 126 g

OPTIONAL COLOR:



2



4



99J



F1B/99J



F2/33



P1B/30



P4/30



TT1B/27



TT1B/BLUE



P2/33



LACE ALL F MARLEY

LENGTH: 12 inch

WEIGHT: 153 g

OPTIONAL COLOR:



99J



F1B/99J



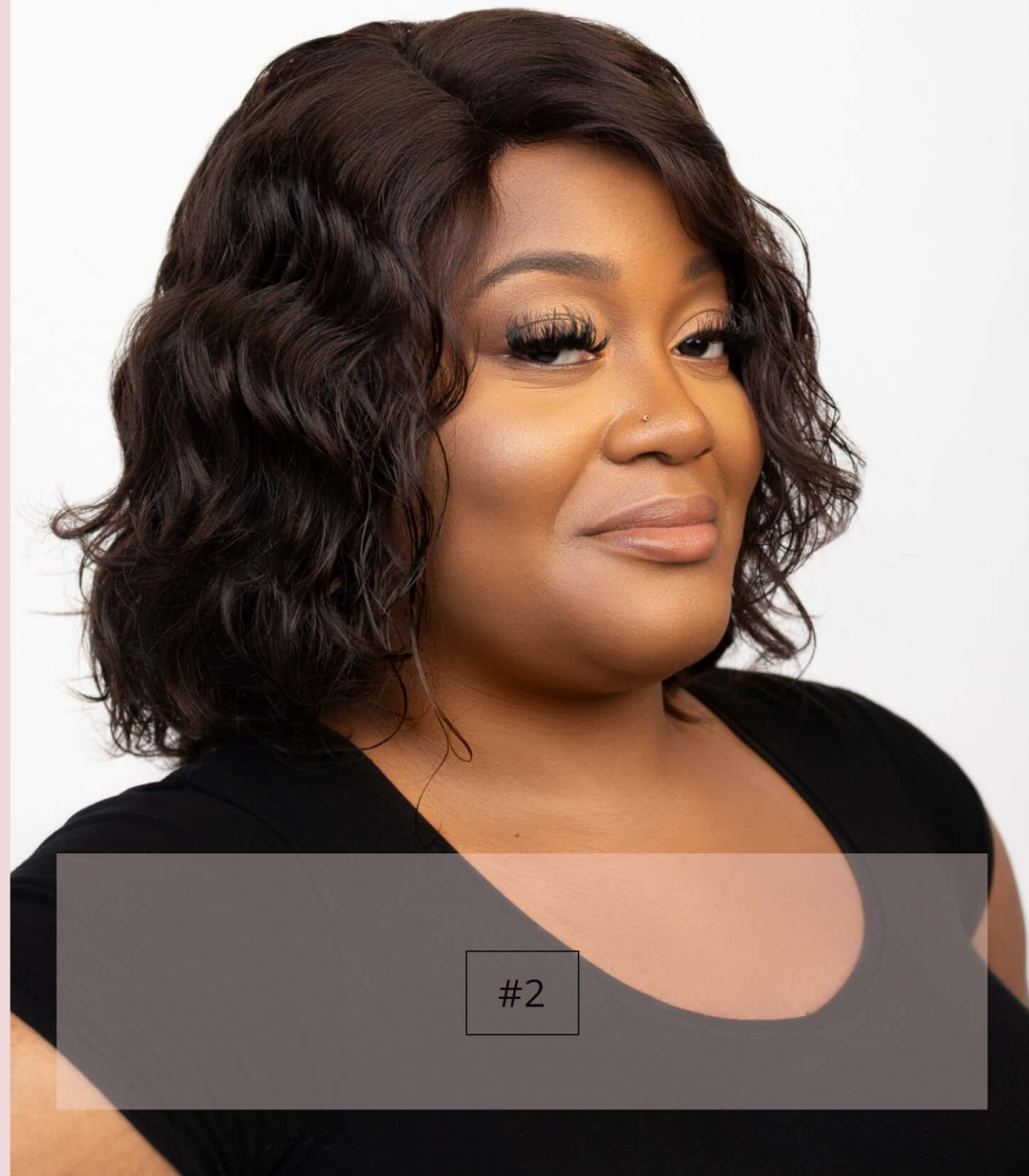
F2/33



TT1B/27



TT1B/RED



#2



LACE ALL F MADONNA



LENGTH: 16 inch

WEIGHT: 187 g

OPTIONAL COLOR:



2



4



99J



DGT26D/144B/340B



P1B/99J



F2/33



P1B/30



P4/30



TT1B/27



P1b/99J



LACE KESS

LENGTH: 14 inch

WEIGHT: 167 g

OPTIONAL COLOR:



2

4

99J



DQT26D/144B/340B

FB/99J

F2/33

P1B/30

P4/30

TT1B/27



P4/30



LACE FLIRTY

LENGTH: 14 inch

WEIGHT: 148 g

OPTIONAL COLOR:



2

4

99J



F1B/99J

F2/33

P1B/30

P4/30

TT1B/27

TT1B/RED





LACE KEYSHIA



LENGTH: 12 inch

WEIGHT: 118 g

OPTIONAL COLOR:



1



2



4



99j



F 1B/99J



f 2/33



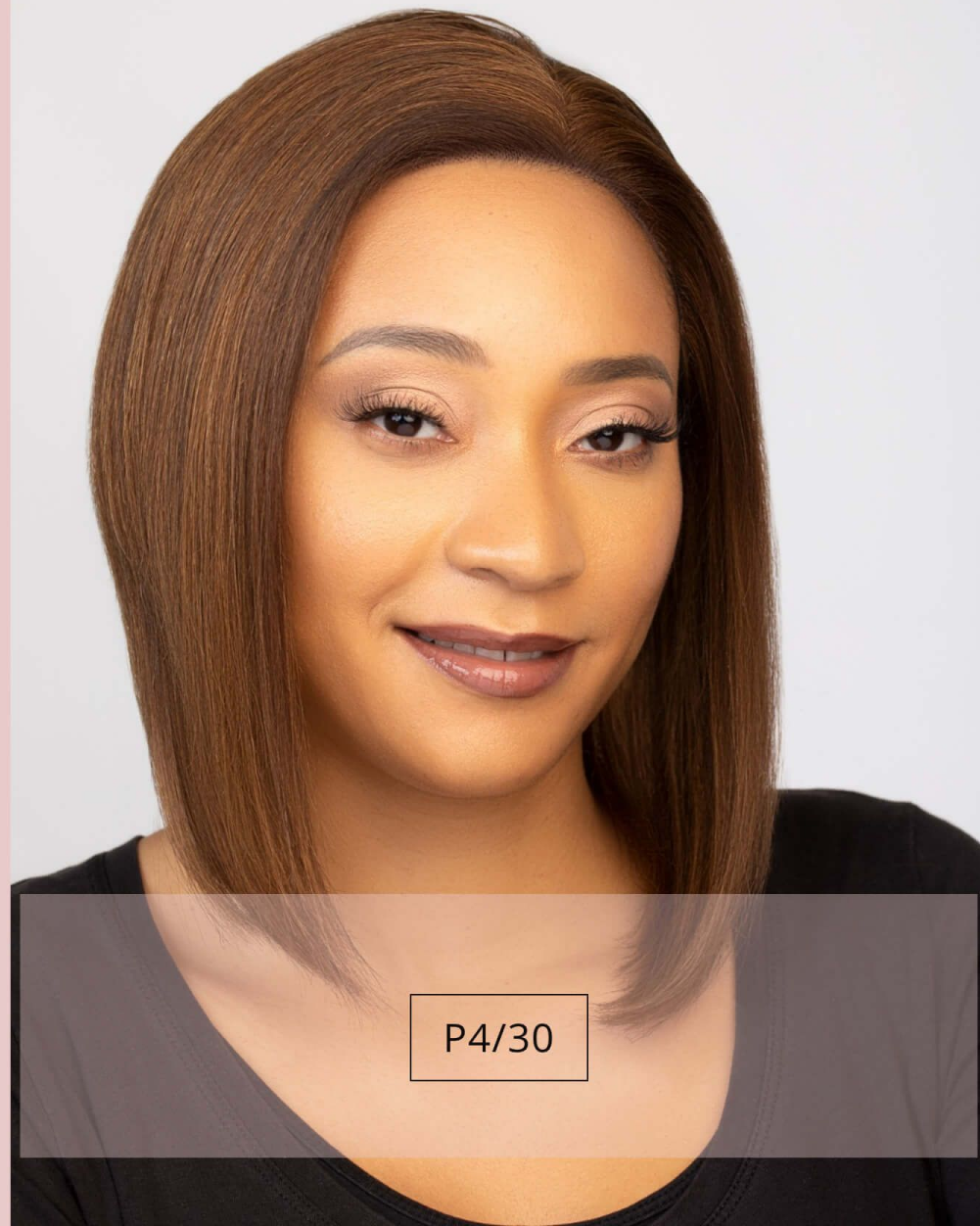
P 1B/30



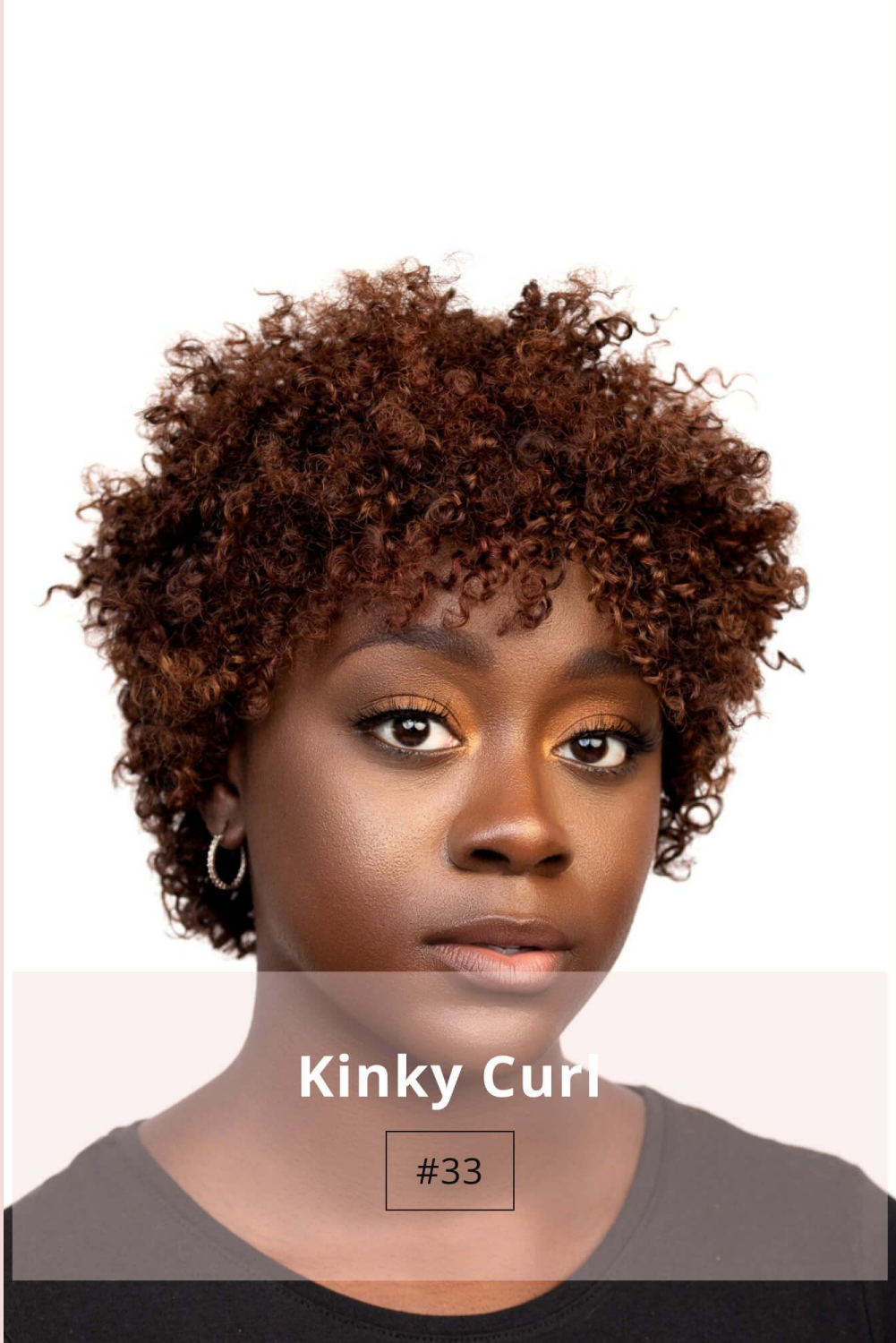
P 4/30



TT 1B/27



P4/30



Kinky Curl

#33

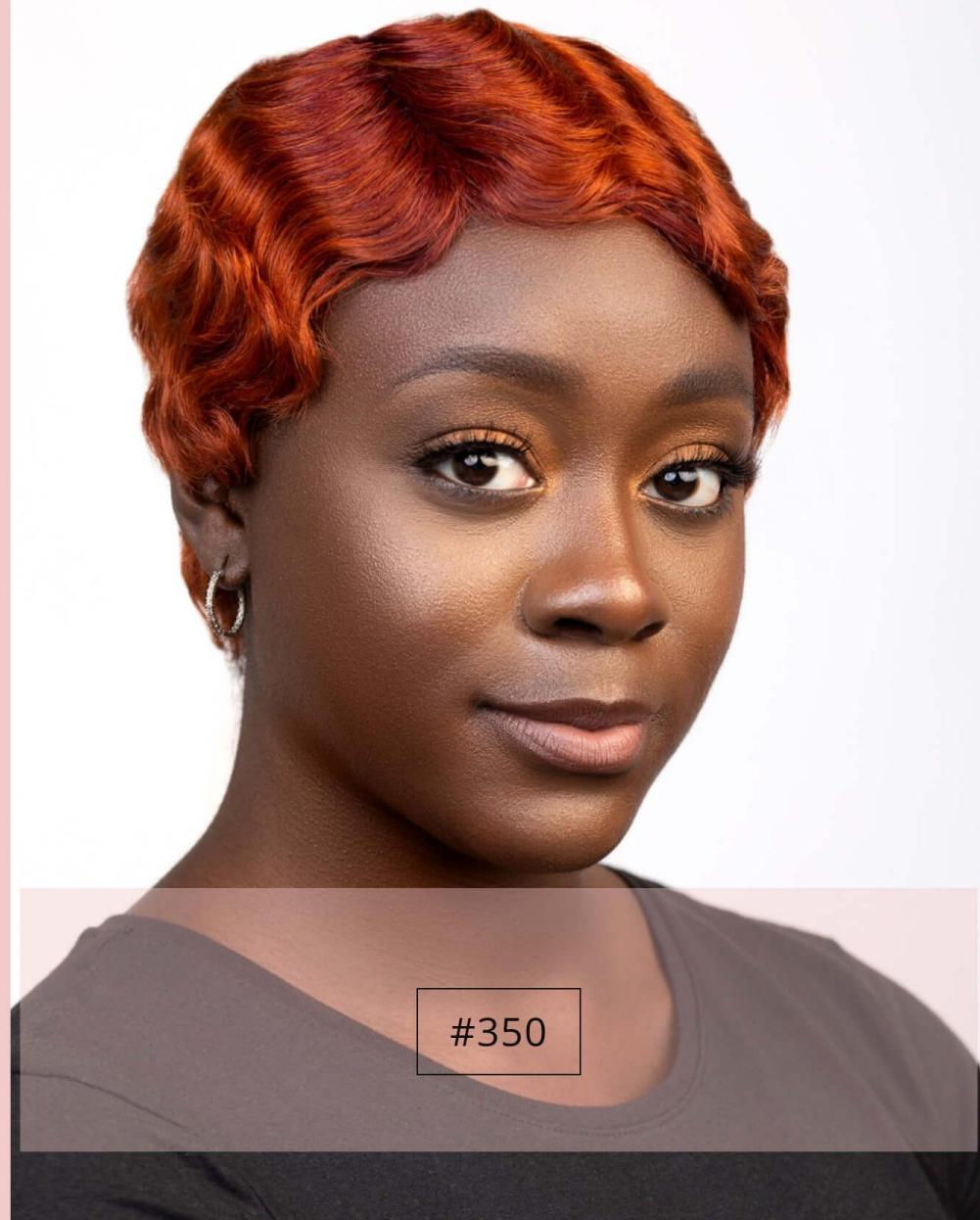


Kinky Curl

#27



HH EVA



#350

GVA Synthetic Lace Parting Wigs

These wigs are hand - tied to give a realistic, natural finish. They are made of 100% premium synthetic fibre that are able to withstand heat styling.



OLIVIA TSCRUNCH





LACE VARUNA TT4/130E





LACE FRONTAL LOTTE 1B





TAYLOR TTPN4/T30/16/613A





SHAKIA TT1B/INDBL





ENYA SOP20503





BETTY

TSTOFFEE





NANA

OS27/613



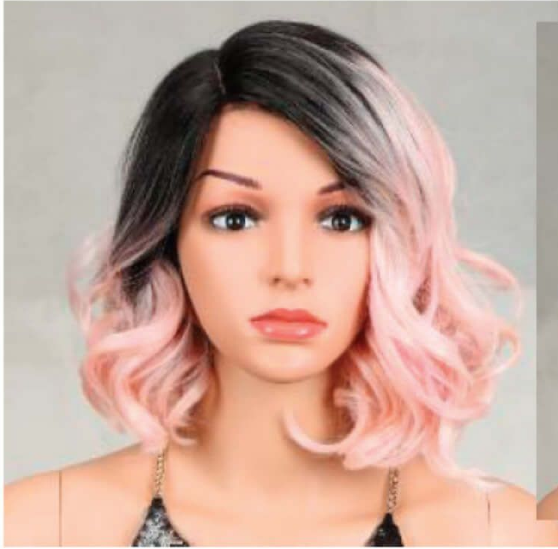


HAYLIE



TT4/3427





LACE CHRISSY



TT2/L.PINK





LACE LEXUS

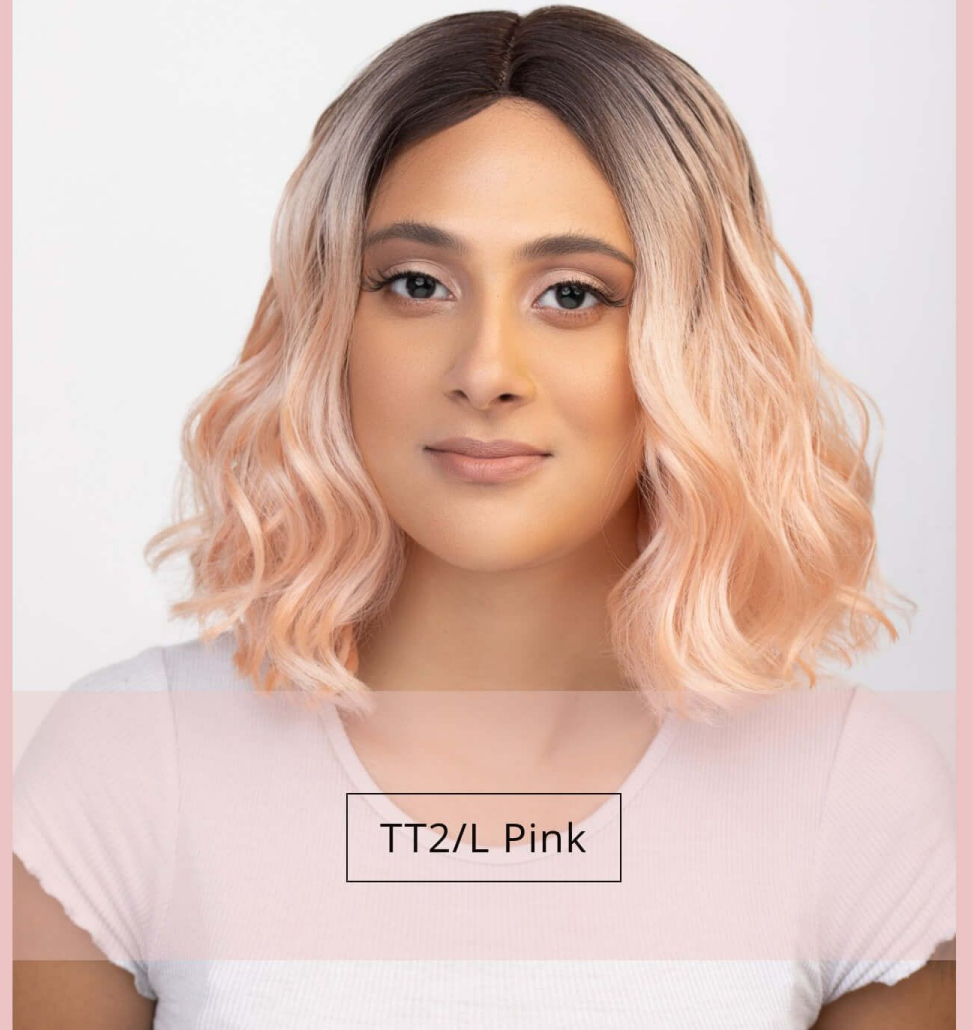
1B





LACE JADA

TT99J/PUR

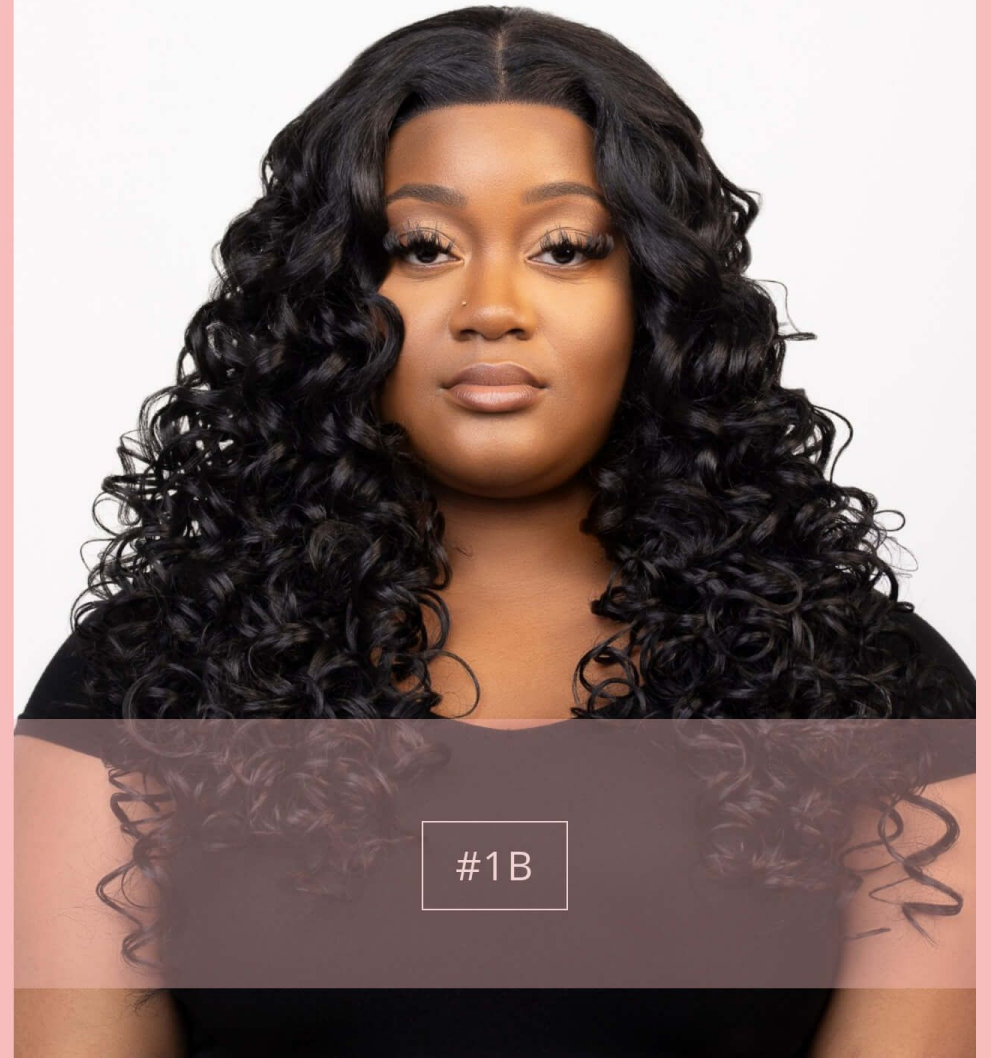


TT2/L Pink



LACE FRONTAL MARION

1B



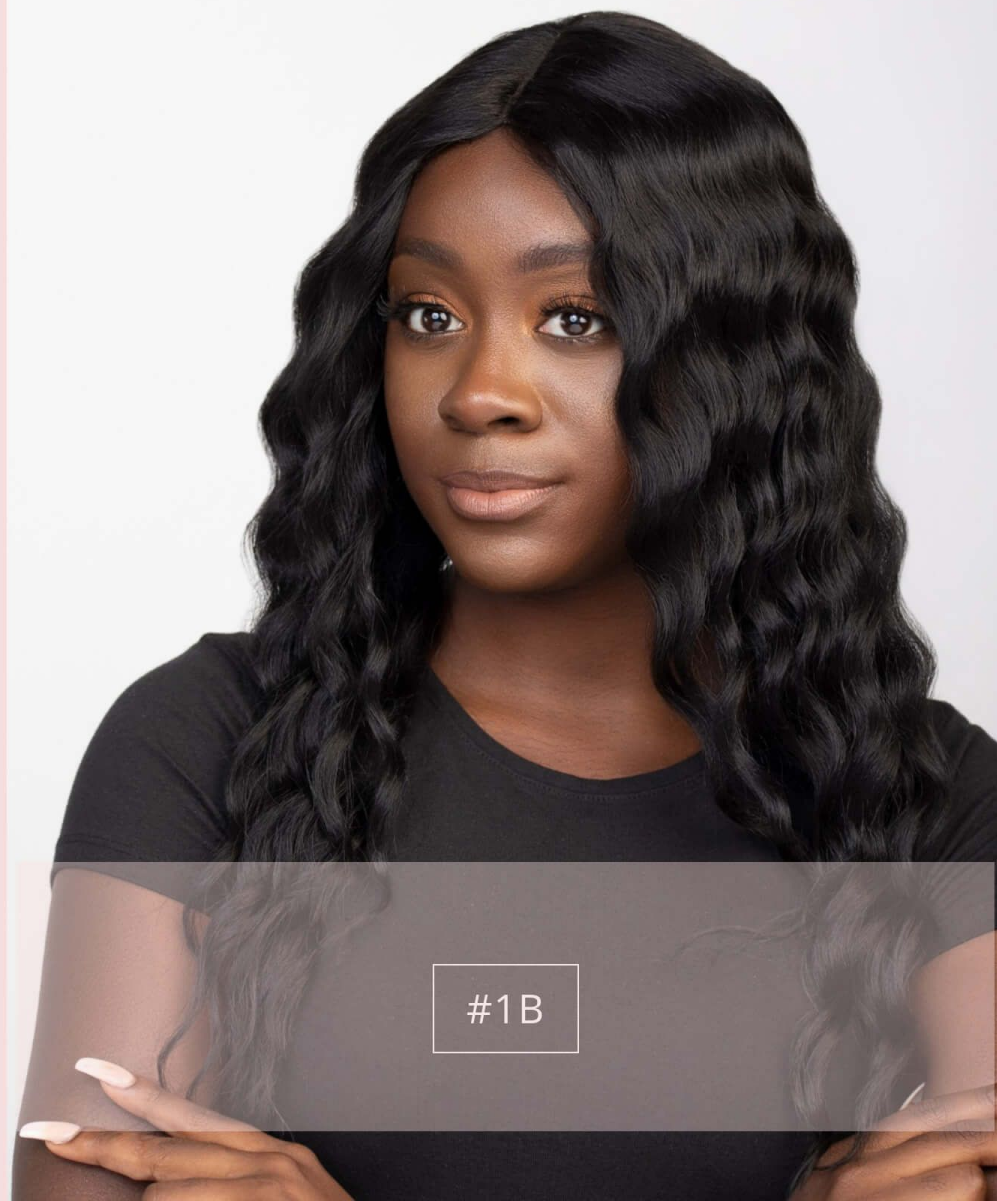
#1B



LACE MANHATTAN



1B

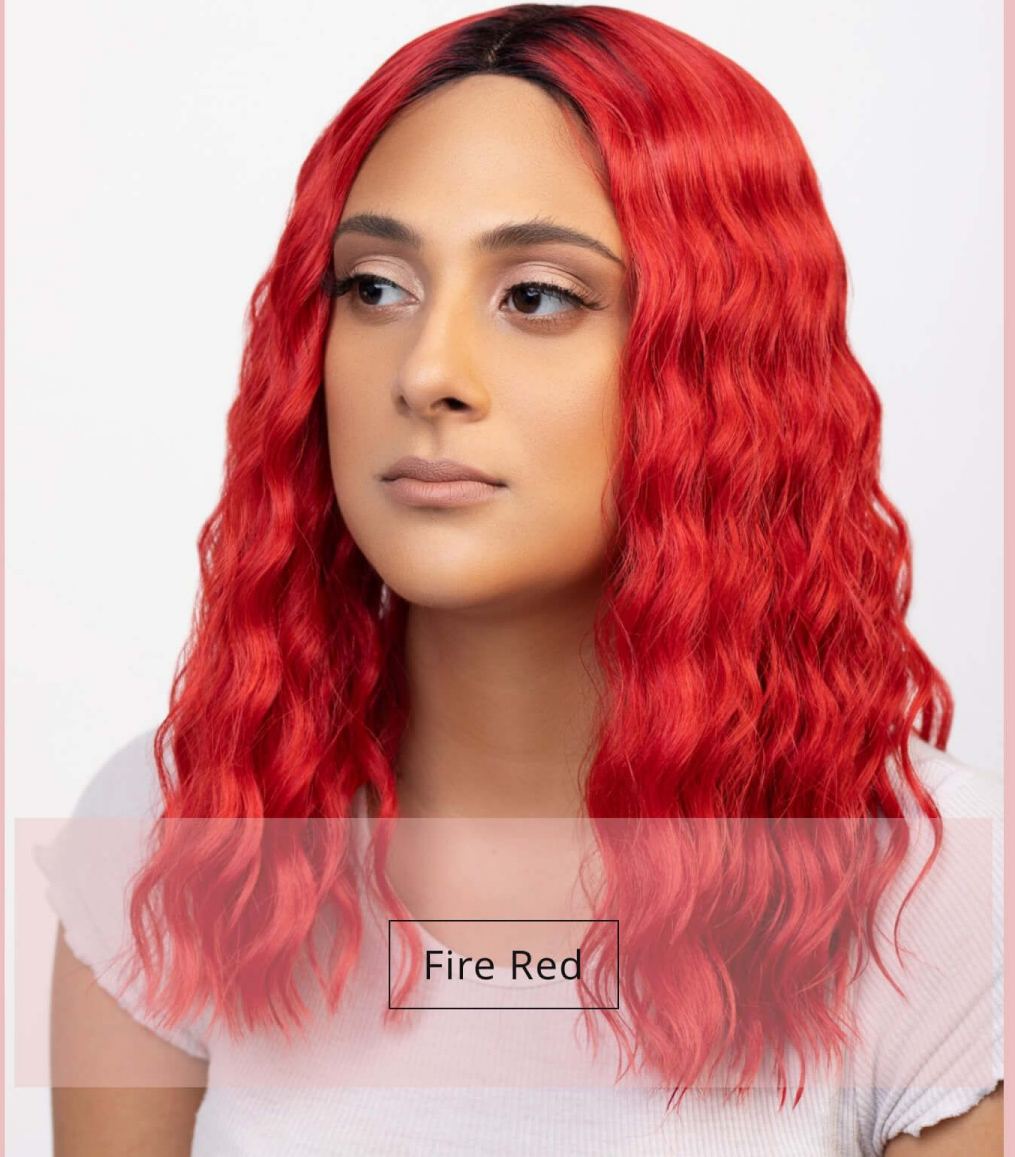


#1B



LACE RACHEL

TTPN4/270A/24F



Fire Red



LACE DARIA



TT1B/GREEN8



TT1B/Green8



NATALIE F1B/30



TT4/AQUA



DESSA

99J



1B

Nefertiti - Natural You

This collection consists of natural styling which are different hair strands like spirals, braiding, kinky or tight curly hair fibres that are styled on the wig caps to give that natural look.



Box Braids

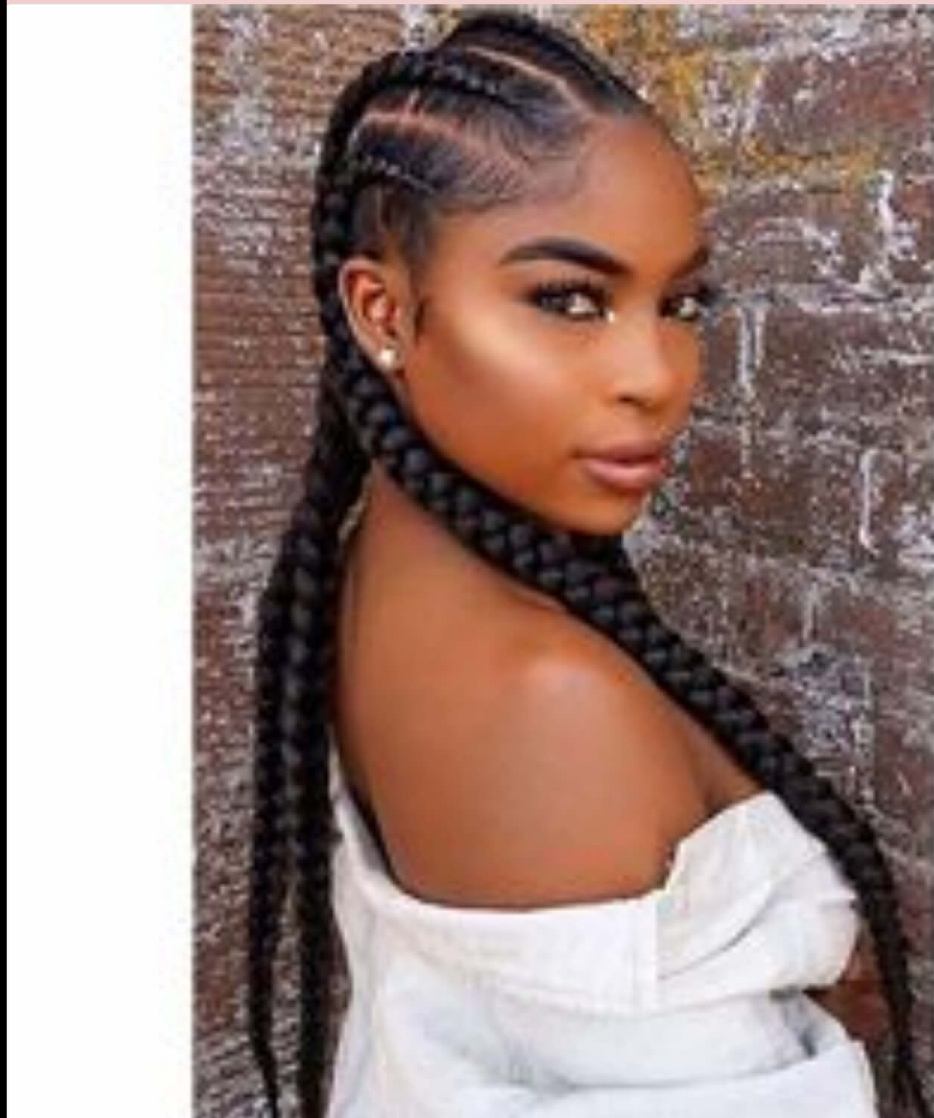
Natural - Off Black





Cornrow Braids

Natural - Off Black





Curl Afro

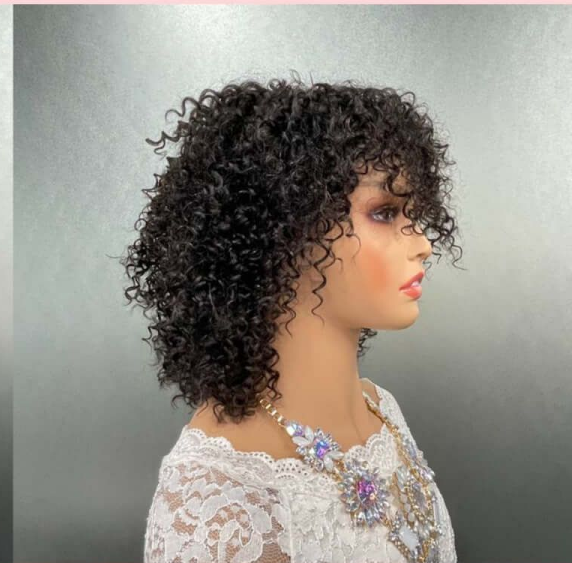
Natural -Off Black





Kinky Curl - Human

Natural - Off Black





Fro

#1B, #1B/30

K's Deluxe 5*5 & 13*6 Frontal Lace Wigs.

These units are ideal for anyone who wants a high fashion realistic looking head of hair. Our frontal lace wig has an incredibly natural appearance with a HD sheer lace base and 180% hair density. It's lighter and more easy to wear. These wigs can part anywhere, and it can also be styled in up do's and high ponytails.

Front Lace Wig



Swiss front lace,
soft and comfortable

Machine made,
no shedding and tangle

Elasticated strap

13*6 Lace Frontal



5*5 Lace Closure

Human Hair Lace Bob Wig Color Show



Bob - Shawnee



Jerry Curl - Londii

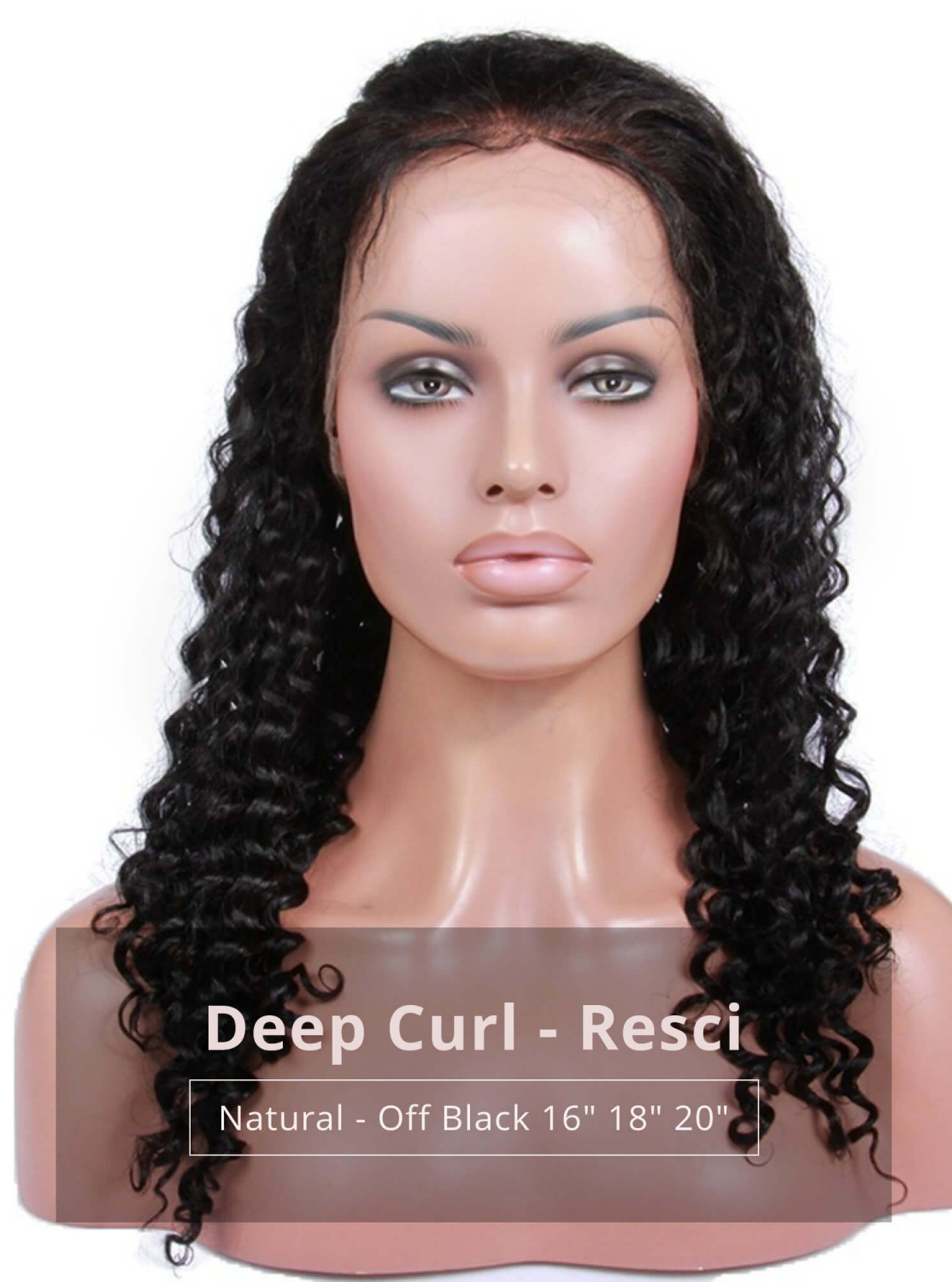
Natural - Off Black 14", 16", 18"





Silky Straight - Kelly

Natural - Off Black 16",18",20"



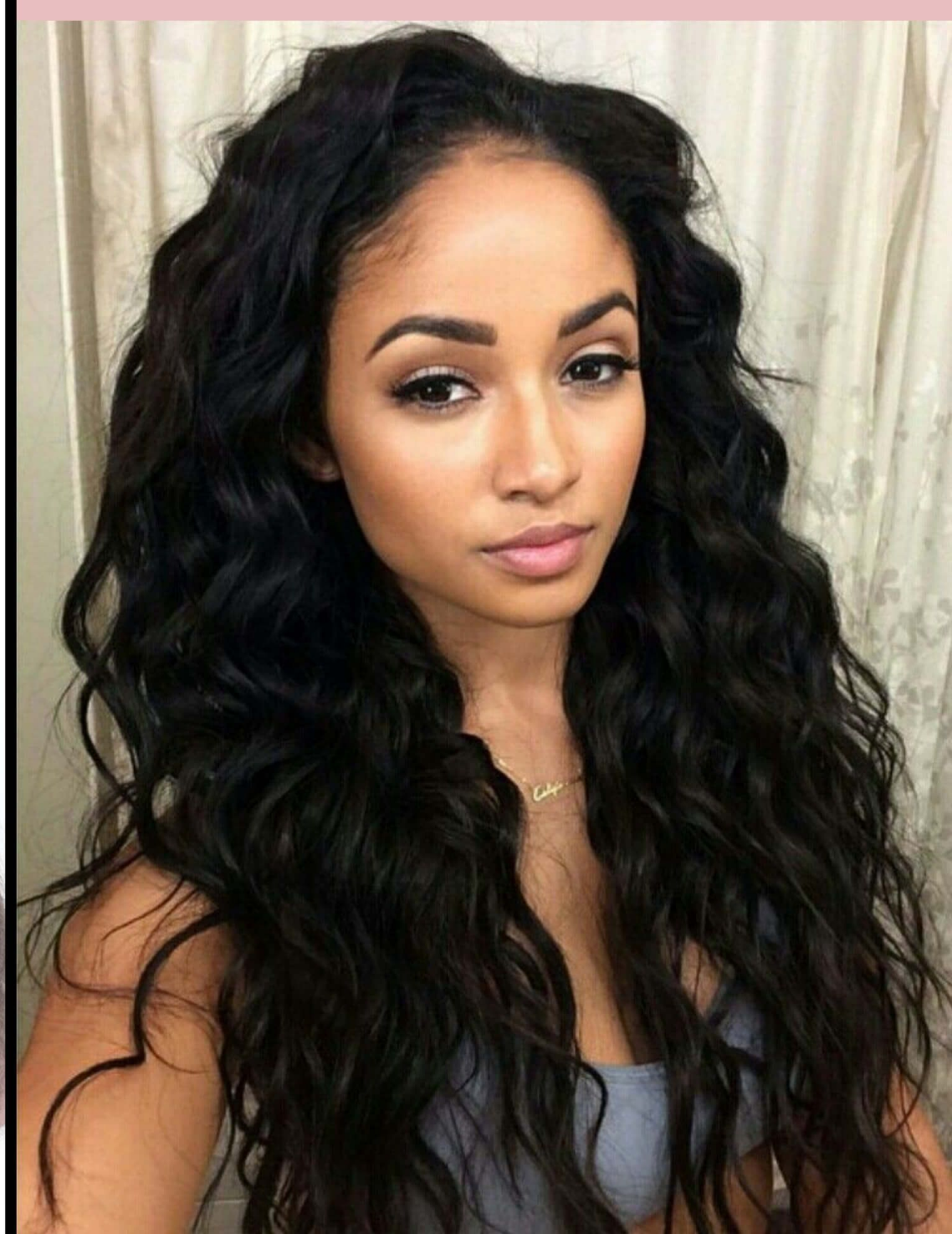
Deep Curl - Resci

Natural - Off Black 16" 18" 20"



Deep Wave - Kassi

Natural - Off Black 18", 20"





Loose Curl - Kayla

Natural - Off Black 18", 20"



Body Wave - Ky-Lee

Natural - Off Black 18",20"





Kinky Curl - Kaila

Natural - Off Black 18", 20"

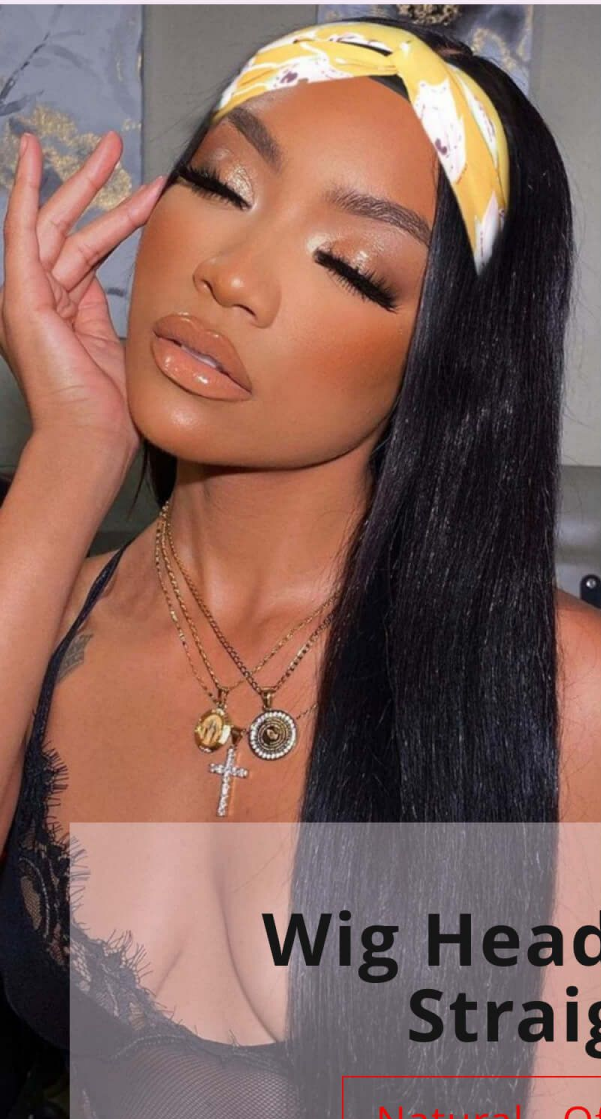


Deep Wave - Kalise

Natural - Off Black 18",20"

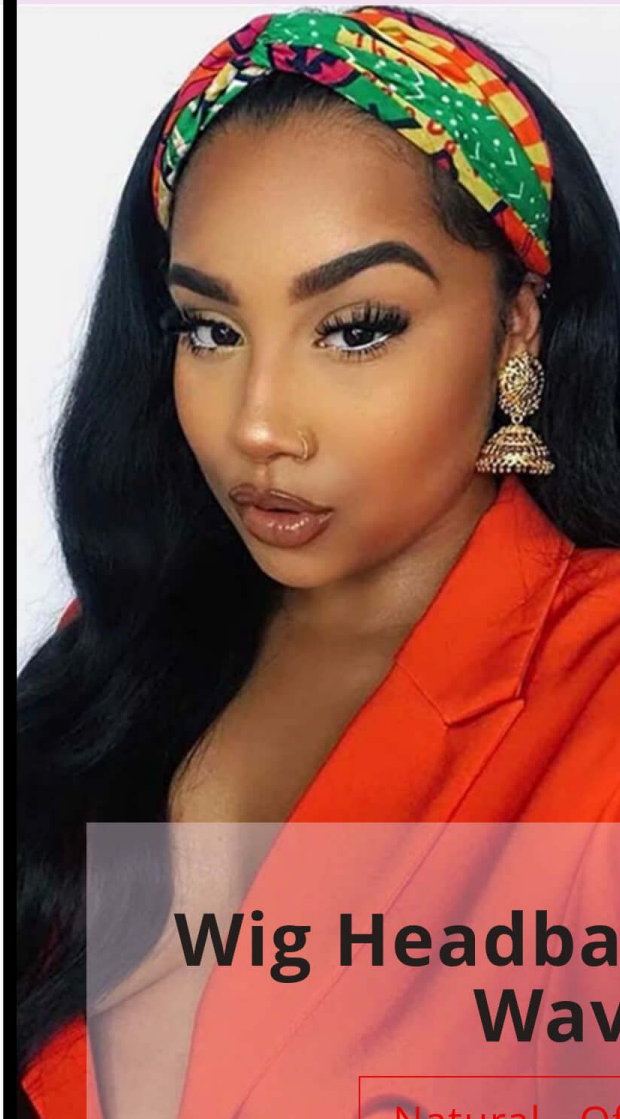
Be Beautiful - Headband Wigs

Our human headband wig is a type of wig that comes with a shawl-like material resembling the headband attached to the front part. The headband covers the hairline and gives it a more natural look. It can be placed over the head using the headband rather than clips or other fasteners and it can be slid around the head.



Wig Headband - Straight

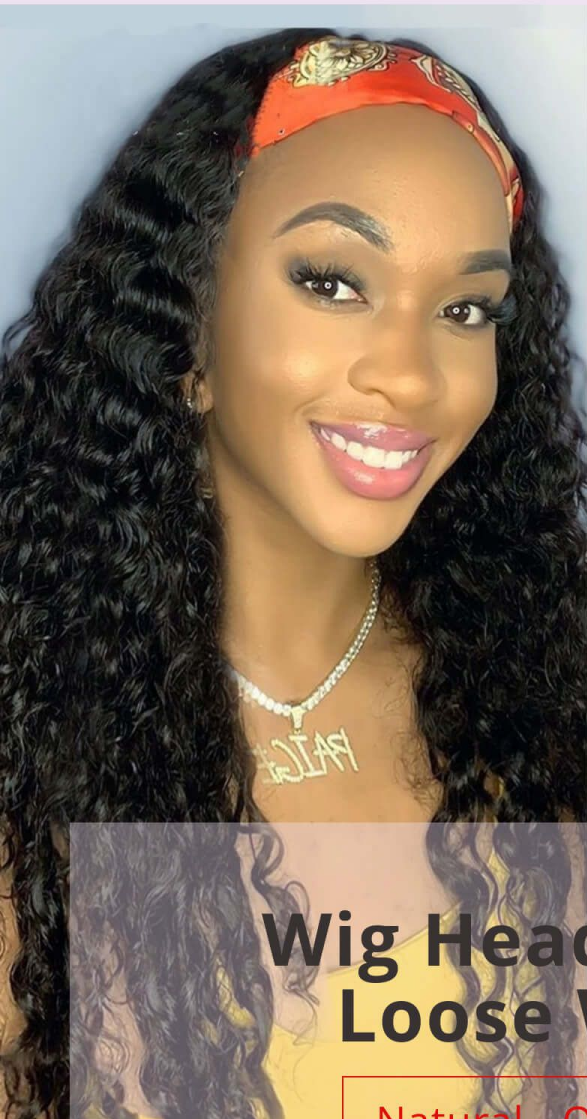
Natural - Off Black



Wig Headband - Body Wave

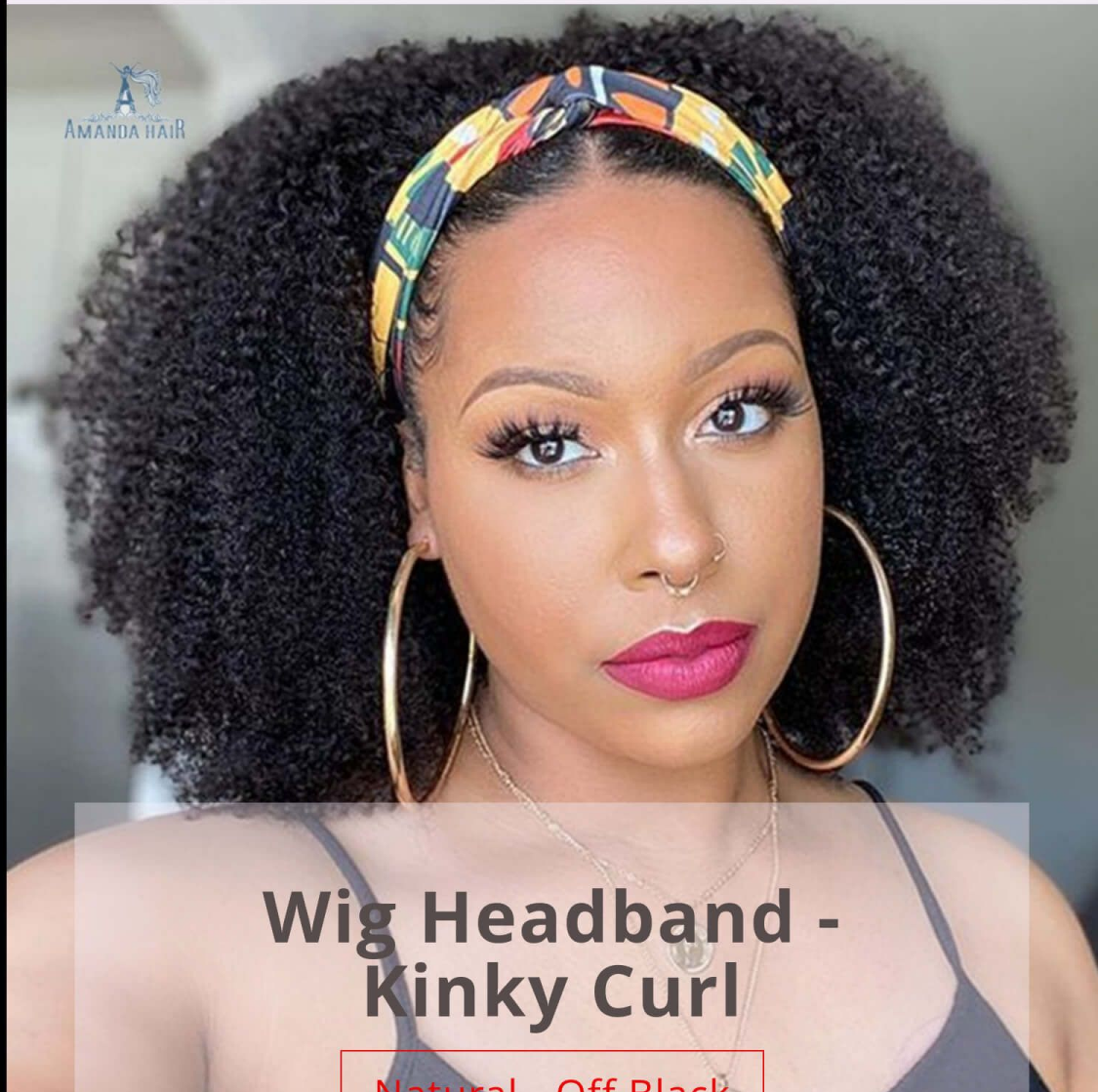
Natural - Off Black





**Wig Headband -
Loose Wave**

Natural - Off Black



**Wig Headband -
Kinky Curl**

Natural - Off Black

AMANDA HAIR



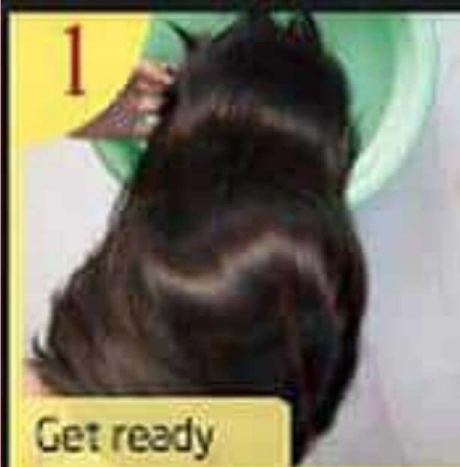
Baseball cap wig



Washing your Wig

Steps:

- 1 - Comb to tangle free
- 2 - Add mild shampoo
- 3 - Soak to clear up
- 4 - Add conditioner
- 5 - Rinse in fresh water
- 6 - Squeeze out water
- 7 - Absorb water in a dry towel
- 8 - Place on a wig tree to air dry
- 9 - When dry style
- 10 - Ready to wear



1
Get ready



2
Using shampoo



3
Washing



4
Add conditioner



5
Washing



6
Rinse with water



7
Towel the hair



8
Hung up to air dry



9
After washing

For more information visit our website - www.gillswigworld.co.uk or call us on
07711283169.

Gill's



Wigworld