



5.6 FarmMining RCRU: A Peer-to-Peer RWA System

**CONFIDENTIAL & EMBARGOED
NOT FOR PUBLIC DISTRIBUTION UNTIL:
March 15, 2026, 09:00 AM HST (The Genesis Launch)**

Kendell Lang

ceo@mOrganic.ag

mOrganic™ Holdings, LLC

www.mOrganic.ag

www.FarmMiner.ag

Abstract: A purely peer-to-peer version of a Real-World Asset (RWA) would allow high-integrity carbon removals to be sent directly from the producer (the Farm Miner™) to the buyer (the Sovereign or Corporate entity) without going through an opaque, centralized brokerage system. Digital signatures provide part of the solution, but the main benefits are lost if a trusted third party is still required to verify the "Work" of the soil. We propose a solution to the "Integrity Gap" by integrating the **FarmChain™** with the **dMRV™** platform—a distributed system that natively prices trust through verifiable outcomes. The system replaces theoretical "look-up tables" with **Biological Proof-of-Work (BPoW)**, utilizing a triple-layered data stack (Molecular, Biological, Telemetric) and economically binding reputation stakes. The system is secure as long as the majority of the "Biological Power" is generated by regenerative Farm Miners who prioritize the Pillars of Plant AutoImmunity™ over extractive industrial models.

1. Introduction

The voluntary carbon market suffers from chronic trust failures: opaque trading and weak outcome linkage. Current tokenization efforts address liquidity but fail to address the underlying credibility of the "work" done by the soil.

The global carbon market has become almost entirely reliant on financial institutions or third party standards entities serving as trusted third parties to process "Offsets." While the system works for low-stakes transactions, it suffers from the inherent weaknesses of the "Trust-Based Model."

mOrganic™ Holdings, LLC

30 N Gould Street | Suite R | Sheridan. | Wyoming | 82801

© 2026 **mOrganic™ Holdings, LLC**, All Rights Reserved – Confidential and Not to Be Copied or Distributed

This document and the proprietary concepts within (Biological Proof-of-Work™, dMRV™ Integration, and RCRU Layered Data Stacks) are the intellectual property of mOrganic™ Holdings, LLC. Early access is granted under a strict press/institutional embargo. Unauthorized distribution, disclosure, or 'front-running' of the Genesis Block is strictly prohibited.



Completely irreversible removals are not really possible, since industrial "avoidance" credits can be contested or found to be non-existent.

What is needed is an electronic removal system based on **Biological Proof** instead of trust, allowing any two willing parties to transact directly with each other without the need for a central clearinghouse. In this paper, we propose a **Farm Mining** system using a decentralized Monitoring, Reporting, and Verification (**dMRV**) telemetry stack to solve the problem of verification.

To solve this, we introduce the **RCRU (Regenerative Carbon Removal Unit)** as the first Proof of Concept (PoC) for the **DMRV™** platform. In this model, the terrestrial biosphere acts as the hardware, while the **HyperLocal EcoSystem™** protocol serves as the software. Trust is no longer a prerequisite; it is a measurable variable priced by the market through cryptographic attestations and staked claims.

2. The Real-World Asset: The RCRU & Transactions

We define a **High-Yield Regenerative Carbon Removal Unit (RCRU)** as a chain of digital signatures. Each FarmMiner™ transfers the unit to the next by digitally signing a hash of the previous transaction and the telemetry data of the "Molecular Removal" (Layer 1) and "Biological Co-Benefits" (Layer 2).

The problem, of course, is the buyer can't verify that the farmer didn't "double-count" the ton of carbon or that the carbon actually exists in the soil. To solve this, the introduction of a **FarmChain** ensures that once a ton of CO₂ is sequestered and serialized via the **Verra VM0042** methodology, it is locked into the ledger.

The RCRU is not a "credit", but a **Smart Unit** composed of a three-layered data stack:

1. **Molecular Layer (L1):** 1.0 metric ton of CO₂ physically sequestered in Soil Organic Matter (SOM).
2. **Biological Layer (L2):** Verified "Microbial Yield" and biodiversity increase via the **BeeGenerative™** system.
3. **Telemetric Layer (L3):** A permanent digital twin captured via a decentralized sensor network (dMRV).

3. Biological Proof-of-Work (The HyperLocal EcoSystem™)

Unlike Bitcoin's Proof-of-Work, which utilizes silicon-based hashing to secure a network, **Farm Mining™** uses biological energy to secure the biosphere.

mOrganic™ Holdings, LLC

30 N Gould Street | Suite R | Sheridan. | Wyoming | 82801

© 2026 **mOrganic™ Holdings, LLC**, All Rights Reserved – Confidential and Not to Be Copied or Distributed

This document and the proprietary concepts within (Biological Proof-of-Work™, DMRV™ Integration, and RCRU Layered Data Stacks) are the intellectual property of mOrganic™ Holdings, LLC. Early access is granted under a strict press/institutional embargo. Unauthorized distribution, disclosure, or 'front-running' of the Genesis Block is strictly prohibited.



- **The Inoculant (CEAq™):** The spark that initiates high-yield carbon capture.
- **The Cycle (BeeGenerative™):** The engine that drives the nitrogen and carbon cycles.
- **The Hardware (3-Tree Agroforestry™):** The physical canopy (Coconut, Cacao, Moringa) that acts as the carbon-capture array.

To implement a peer-to-peer RWA system, we use a biological "Proof-of-Work" similar to Satoshi's Hashcash. The "Work" in our system is the intensive atmospheric-to-terrestrial transfer of carbon through the **HyperLocal EcoSystem™**.

This is not a theoretical calculation. The "Work" is physical:

- **CEAq™ Inoculation:** The initial "Nonce" that triggers the soil's metabolic rate.
- **3-Tree Agroforestry Plan™:** The "Mining Hardware" consisting of the Over-Canopy, Mid-Canopy, and Under-Canopy that captures solar energy and atmospheric carbon.
- **BeeGenerative™ Cycling:** The "Clock Speed" of the system, accelerating nutrient and carbon cycles via rotational animal units and apiary activity.

The DMRV Network Architecture

*The mOrganic™ project utilizes the **DMRV (Climate Registry Exchange)** as its primary network architecture, moving beyond traditional DLT frameworks to a dedicated settlement environment for environmental assets.*

- **Atomic Settlement:** Unlike general-purpose blockchains, the DMRV architecture enables "Atomic" transactions, where the payment and the transfer of the RCRU occur simultaneously. This eliminates the counterparty risk common in "Over-the-Counter" (OTC) carbon deals.
- **The mOrganic™ dMRV Data-Pipe:**
 - **Field Capture:** LoRaWAN nodes transmit soil and biomass data to the mOrganic™ edge gateway.
 - **Validation:** The DMRV **Validator Nodes** cross-reference this field data against pre-set protocol thresholds (The "Smart Contract" layer).
 - **The Minting Event:** Once the data is verified, DMRV mints the RCRU directly into the project's institutional vault.
- **Fractionalization & Liquidity:** DMRV natively supports the fractionalization of RCRUs, allowing investors to trade "Sats" (Satoshi-level units) of carbon removal, mirroring the liquidity profile of Bitcoin.

mOrganic™ Holdings, LLC

30 N Gould Street | Suite R | Sheridan. | Wyoming | 82801

© 2026 mOrganic™ Holdings, LLC, All Rights Reserved – Confidential and Not to Be Copied or Distributed

This document and the proprietary concepts within (Biological Proof-of-Work™, DMRV™ Integration, and RCRU Layered Data Stacks) are the intellectual property of mOrganic™ Holdings, LLC. Early access is granted under a strict press/institutional embargo. Unauthorized distribution, disclosure, or 'front-running' of the Genesis Block is strictly prohibited.



The "Work" is proven when the dMRV sensors record a delta in **Soil Organic Matter (SOM)** and **Microbial Biomass Carbon (MBC)**.

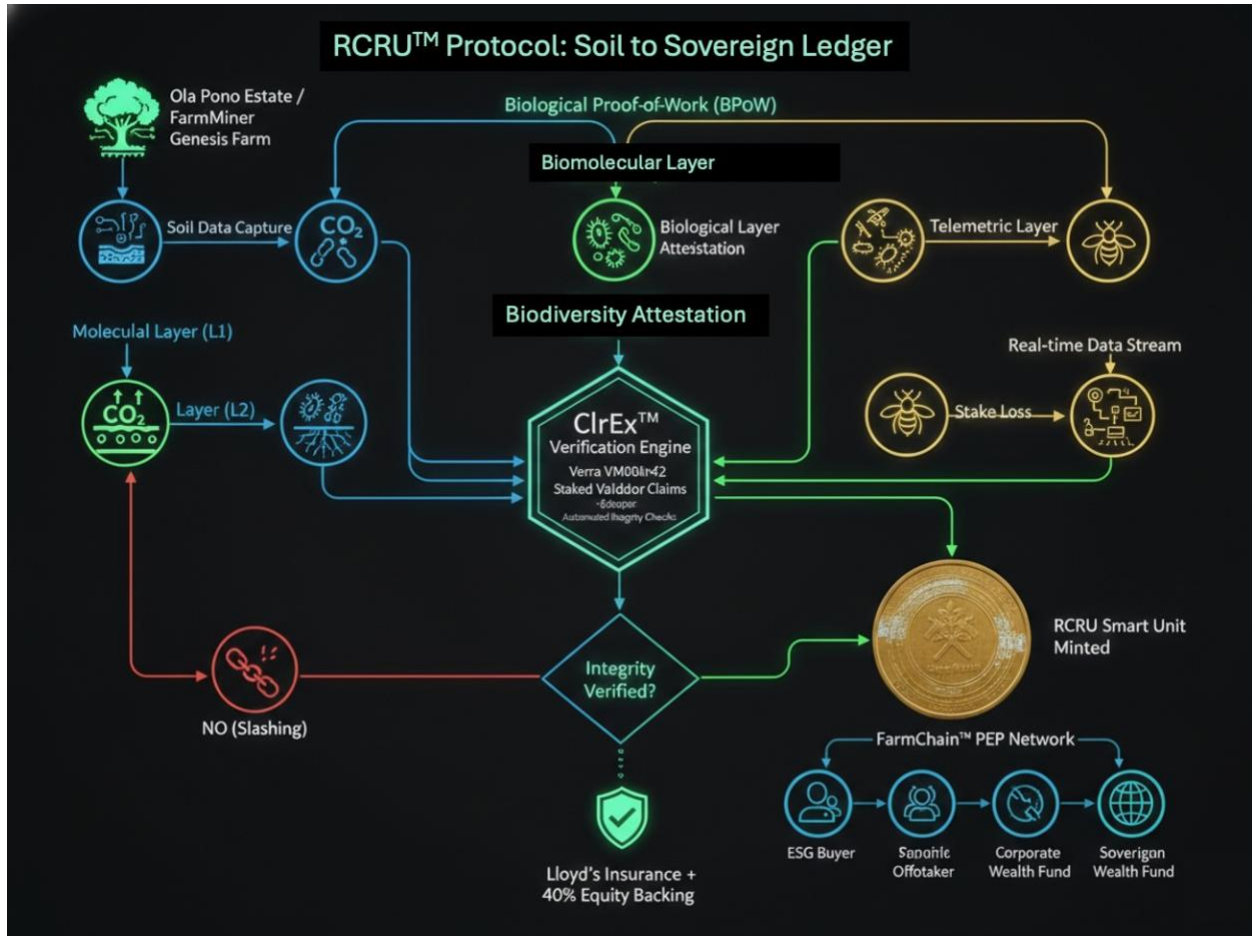


Figure 1 - Visual Logic Flowchart RCRU

The DMRV™ Integration: Verifiable Outcomes

The DMRV™ platform provides the "Proof-of-Trust" protocol required for the FarmChain™.

- **Directed Acyclic Trust Graphs:** Each RCRU claim is represented as a trust graph composing verifiable evidence over time (historical land-use, baseline measurements, and sensor data).

mOrganic™ Holdings, LLC

30 N Gould Street | Suite R | Sheridan. | Wyoming | 82801

© 2026 mOrganic™ Holdings, LLC, All Rights Reserved – Confidential and Not to Be Copied or Distributed
 This document and the proprietary concepts within (Biological Proof-of-Work™, DMRV™ Integration, and RCRU Layered Data Stacks) are the intellectual property of mOrganic™ Holdings, LLC. Early access is granted under a strict press/institutional embargo. Unauthorized distribution, disclosure, or 'front-running' of the Genesis Block is strictly prohibited.



- **Economic Accountability:** Operators and independent attestors (laboratories, agronomists) must post a financial stake bound to their attestations.
- **Slashing & Trust Decay:** If an RCRU claim is later invalidated by dMRV telemetry, governance rules trigger "stake slashing" and trust decay through the graph.

4. The Farm Miner™ Node

The steps to run the FarmChain™ are as follows:

1. New soil telemetry data is broadcast to all nodes in the dMRV network.
2. Each **FarmMiner™** node collects new data into a block of RCRUs.
3. Each node works on finding a difficult biological proof-of-work for its block (attaining the **Three Pillars of Plant AutoImmunity™**).
4. When a node finds a biological proof, it broadcasts the block to all nodes.
5. Nodes accept the block only if the telemetry data is valid (authenticated via the **Source Integrity Report - SIR**).
6. Nodes express their acceptance of the block by working on creating the next RCRU in the chain.

Network Architecture & Methodology

The FarmChain™ utilizes the Verra VM0042 (Methodology for Improved Agricultural Land Management) as its baseline regulatory framework.

1. Timestamp Server: Every RCRU is serialized and timestamped on the Verra Registry.
2. Verification Flow:
 - TAGB (Total Above-Ground Biomass): Measured via LiDAR and Leaf Area Index (LAI).
 - BGB (Below-Ground Biomass): Calculated via a 0.26–0.30 Root-to-Shoot ratio for deep-taproot species like Moringa.
 - The 3.67 Factor: Molecular conversion of Carbon to tCO_{2e} (44/12).

5. Incentives

By convention, the first transaction in a block is a special transaction that starts a new RCRU owned by the creator of the block. This adds an incentive for FarmMiner™s to support the network and bring land into the **Regenerative Ledger**. If a greedy actor is able to assemble more "Biological Power" than all the honest Farm Miners, he would have to choose between using it to defraud people by "double-selling" units or using it to generate new RCRUs. He ought to find it

mOrganic™ Holdings, LLC

30 N Gould Street | Suite R | Sheridan. | Wyoming | 82801

© 2026 **mOrganic™ Holdings, LLC**, All Rights Reserved – Confidential and Not to Be Copied or Distributed

This document and the proprietary concepts within (Biological Proof-of-Work™, DMRV™ Integration, and RCRU Layered Data Stacks) are the intellectual property of mOrganic™ Holdings, LLC. Early access is granted under a strict press/institutional embargo. Unauthorized distribution, disclosure, or 'front-running' of the Genesis Block is strictly prohibited.



more profitable to play by the rules, such rules that favor his wealth more than breaking the system and the validity of his own land.

6. Farmland: The New Gold

The total available arable land for high-yield RCRU production is finite. By 2030, as the difficulty of sequestering high-integrity carbon increases due to climate volatility, the RCRU will become the foundational "Unit of Account" for the global economy. Farmland will be the new gold—the only asset capable of "mining" the units required to settle the debts of the industrial era.

Drawing a parallel between Bitcoin’s **21 million supply cap** and the **equatorial land mass** is a defining narrative for our value proposition. It shifts the perception of an RCRU (Regenerative Carbon Removal Unit) from a vague "offset" to a **hard asset** backed by a finite, biological "block" of land.

The "Supply Cap" Geography: +/- 10⁰ of the Equator

This specific belt—roughly **1,380 miles wide**—represents the only region on Earth where the solar "signal" and hydrological cycles are consistent enough to support the high-velocity growth required for mOrganic™ systems [specifically for the complete HyperLocal EcoSystem, including the 3-Tree Agroforestry Plan (*Moringa, Cacao, Coconuts, and native cover crops*), the BeeGenerative Soil System, Apiary Golden Harvest, CEAq, Vermiculture, Water Regeneration, Biochar, Molecular Inoculants, Co-benefits, Job Creation, Food Security, all culminating in the Pillars of Plant AutoImmunity].

Quantifying the "Finite Resource"

Just as Bitcoin has its total supply and its "circulating supply," equatorial land must be filtered by its **arable utility** for high-yield agroforestry.

Category	Land Metric (Approximate)	Acres
Total Global Land	100% of Earth’s Land Surface	~36.5 Billion Acres
The Equatorial Belt	Total land within +/- 10 ⁰ latitude	~8.9 Billion Acres

mOrganic™ Holdings, LLC

30 N Gould Street | Suite R | Sheridan. | Wyoming | 82801

© 2026 mOrganic™ Holdings, LLC, All Rights Reserved – Confidential and Not to Be Copied or Distributed
 This document and the proprietary concepts within (Biological Proof-of-Work™, DMRV™ Integration, and RCRU Layered Data Stacks) are the intellectual property of mOrganic™ Holdings, LLC. Early access is granted under a strict press/institutional embargo. Unauthorized distribution, disclosure, or 'front-running' of the Genesis Block is strictly prohibited.



Category	Land Metric (Approximate)	Acres
Arable/Degraded Filter	Land suitable for agroforestry (non-desert/urban)	~1.4 Billion Acres
The "Institutional" Block	High-integrity, stable, verifiable zones	< 450 Million Acres

The Scarcity Narrative: While 1.4 billion acres sound vast, once you subtract protected rainforests, urban centers, and politically unstable regions, the "Arable Alpha"—the high-integrity land suitable for institutional RCRUs—is incredibly limited.

The Finite Frontier

Bitcoin's Supply Cap: 21 Million
 High-Integrity RCRU: Limited by Arable Equatorial Land.
 Total Land in Zone: ≈ 1.4 Billion in Zone.
 ≈ 1.4 Billion Acres



Equatorial Zone:
 ±10° Latitude
High-Integrity Arable Land

mOrganic™ Holdings, LLC

30 N Gould Street | Suite R | Sheridan. | Wyoming | 82801

© 2026 mOrganic™ Holdings, LLC, All Rights Reserved – Confidential and Not to Be Copied or Distributed
 This document and the proprietary concepts within (Biological Proof-of-Work™, DMRV™ Integration, and RCRU Layered Data Stacks) are the intellectual property of mOrganic™ Holdings, LLC. Early access is granted under a strict press/institutional embargo. Unauthorized distribution, disclosure, or 'front-running' of the Genesis Block is strictly prohibited.

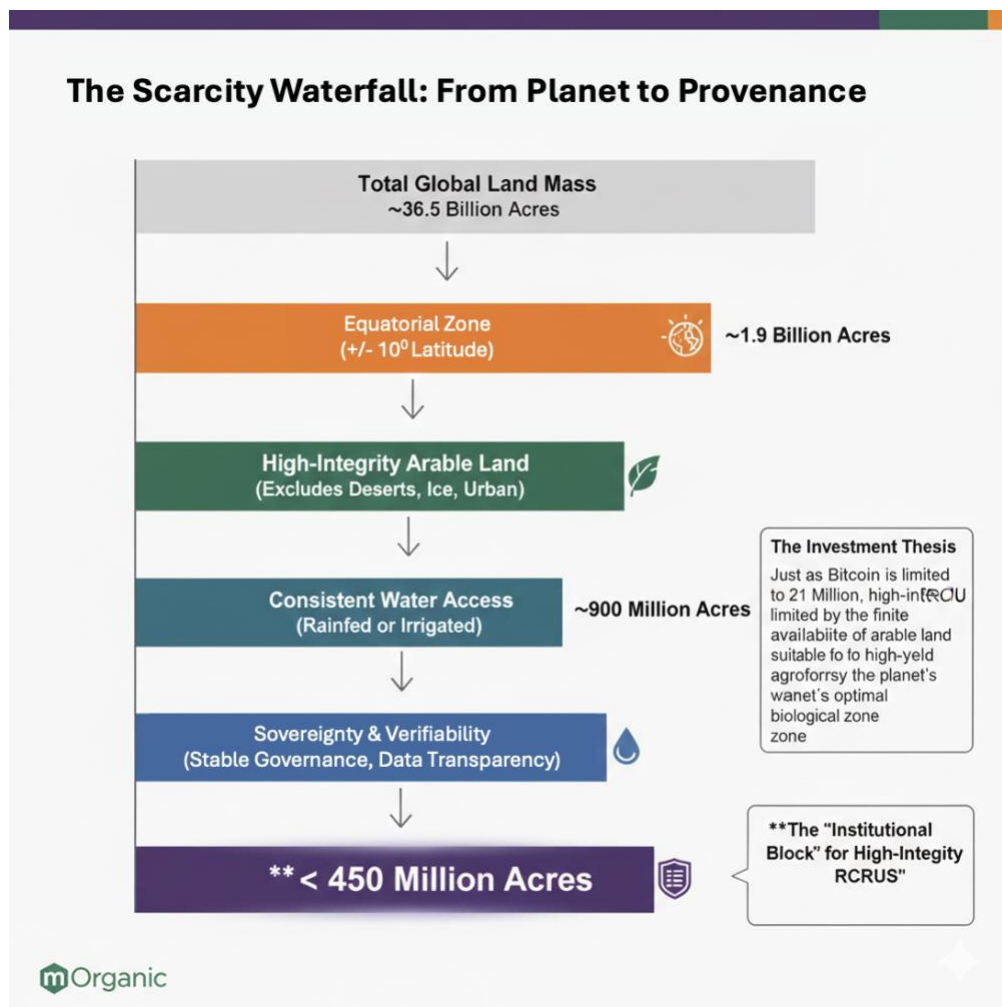


The "Proof of Work" Comparison

In the same way that Bitcoin uses "Mining" (energy consumption) to secure the network, mOrganic™ uses "**Biological Mining**" (Carbon Sequestration) to secure the RCRU.

- **Bitcoin (BTC):** Secured by the scarcity of the algorithm (21,000,000 limit).
- **mOrganic™ (RCRU):** Secured by the scarcity of the **Equatorial Biological Capacity**.

By anchoring our project to the +/- 10⁰ belt, we are essentially telling investors: *"We are claiming our stake in the most productive 'data centers' of the natural world before the 'hash rate' (land price) sky-rockets."*



mOrganic™ Holdings, LLC

30 N Gould Street | Suite R | Sheridan, | Wyoming | 82801

© 2026 mOrganic™ Holdings, LLC, All Rights Reserved – Confidential and Not to Be Copied or Distributed
This document and the proprietary concepts within (Biological Proof-of-Work™, DMRV™ Integration, and RCRU Layered Data Stacks) are the intellectual property of mOrganic™ Holdings, LLC. Early access is granted under a strict press/institutional embargo. Unauthorized distribution, disclosure, or 'front-running' of the Genesis Block is strictly prohibited.



Key Territories in the 10-Degree Belt

- **Americas:** Guyana, Caribbean, Central America, Northern Brazil (Amazon fringe), Colombia, Ecuador.
- **Africa:** DR Congo, Uganda, Kenya (The Hāmākua of Africa), Gabon.
- **Asia/Pacific:** Indonesia, Malaysia, and our current base: **Hawai'i** (sitting at ~19-20°N, Hawai'i acts as the "Northern Lighthouse" for these equatorial systems).

7. The Genesis Block & The Ola Pono PoC

The **Ola Pono Estate** in Honokaa, Hawaii, serves as the "Genesis Farm" for the DMRV™ platform.

- **Supply Scarcity:** Just as Bitcoin is limited to 21 Million, high-integrity RCRUs are limited by the finite availability of arable land suitable for high-yield agroforestry.
- **Incentives:** The first transaction in each block (the "Coinbase transaction" of the FarmChain) is a newly minted RCRU granted to the Farm Miner™ who maintained the regenerative protocol.

mOrganic™ Holdings, LLC

30 N Gould Street | Suite R | Sheridan. | Wyoming | 82801

© 2026 mOrganic™ Holdings, LLC, All Rights Reserved – Confidential and Not to Be Copied or Distributed

This document and the proprietary concepts within (Biological Proof-of-Work™, DMRV™ Integration, and RCRU Layered Data Stacks) are the intellectual property of mOrganic™ Holdings, LLC. Early access is granted under a strict press/institutional embargo. Unauthorized distribution, disclosure, or 'front-running' of the Genesis Block is strictly prohibited.



MORGANIC™
SOVEREIGNTY · STEWARDSHIP · SOIL

REGISTRY: VERRA VM0042
ASSET ID: RCRU-GEN-0001

GENESIS BLOCK

RCRU: A PEER-TO-PEER RWA SYSTEM

This certifies the successful execution of the first physical Atmospheric-to-Terrestrial Carbon Removal, serialized as the foundational unit of the mOrganic™ FarmChain.

ASSET CLASS	QUANTITY	VERIFICATION
Molecular Removal	1.0 Metric Ton tCO ₂ e	dMRV Telemetry

PILLAR I: CEAQ™
PILLAR II: BEEGENERATIVE™
PILLAR III: 3-TREE PLAN™
PILLAR IV: GOLDEN HARVEST™

GENESIS 2026 MINTED

Kendell Lang
INVENTOR & CEO, MORGANIC™

Location: 19.98° N, 155.35° W
Digital Twin Authenticated via SIRs
OLA PONO ESTATE - HONOKAA

7. Conclusion

We have proposed a system for high-integrity carbon removal without relying on trust. We started with the framework of the RCRU, made of a three-layered data stack. From there, we established the **Farm Miner™** as the decentralized authority that secures the ledger through the physical act of regeneration. The **FarmChain™** provides a peer-to-peer RWA system that is as immutable as the soil itself.

By merging the precision of the **FarmChain™** with the accountability of the **DMRV™** platform, we have created a "Hard Asset" carbon removal system that cannot be forged. Farmland is no longer just real estate; it is a biological ledger. The mOrganic™ RCRU stands as the definitive proof of concept for a global economy where capital is finally traceable to verifiable outcomes.

This document serves as the Technical Specification for the Genesis Block of the Ola Pono Estate. By reading this, you are witnessing the first verifiable outcome of the Clear Ledger Exchange (DMRV™). The era of the estimate is over; the era of the Miner has begun.

mOrganic™ Holdings, LLC

30 N Gould Street | Suite R | Sheridan. | Wyoming | 82801

© 2026 mOrganic™ Holdings, LLC, All Rights Reserved – Confidential and Not to Be Copied or Distributed
This document and the proprietary concepts within (Biological Proof-of-Work™, DMRV™ Integration, and RCRU Layered Data Stacks) are the intellectual property of mOrganic™ Holdings, LLC. Early access is granted under a strict press/institutional embargo. Unauthorized distribution, disclosure, or 'front-running' of the Genesis Block is strictly prohibited.