



STUDS ✨ STONES

GEMSTONE GUIDE





ALL ABOUT GEMSTONES

We get it! You LOVE gemstones. They are so gorgeous and sparkly!

But have you ever wanted to know more about the gemstones in your jewellery?

You are in luck! We've created an illustrated guide to gemstones – complete with what each gem represents, powers it possesses and gift suggestions to match.

STUDS ✦ STONES

GEMSTONE GUIDE



GARNET

January birthstone
2nd and 15th Wedding Anniversary
Symbolises constancy, creativity & loyalty
7.5 on the MOHS Scale



AMETHYST

February birthstone
6th and 17th Wedding Anniversary
Symbolises sincerity, protection & peace
7 on the MOHS Scale



AQUAMARINE

March birthstone
19th Wedding Anniversary
Symbolises honesty, courage and health
8 on the MOHS Scale



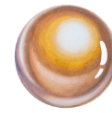
DIAMOND

April birthstone
10th, 60th and 75th Wedding Anniversary
Symbolises commitment and love
10 on the MOHS Scale



EMERALD

May birthstone
12th and 35th Wedding Anniversary
Symbolises happiness and fertility
8 on the MOHS Scale



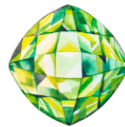
PEARL

June birthstone
3rd, 13th and 55th Wedding Anniversary
Symbolises purity, self-love and success
2.5 on the MOHS Scale



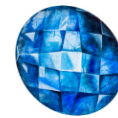
RUBY

July birthstone
15th, 40th and 80th Wedding Anniversary
Symbolises nobility, passion and beauty
9 on the MOHS Scale



PERIDOT

August birthstone
16th Wedding Anniversary
Symbolises prosperity and protection
7 on the MOHS Scale



SAPPHIRE

September birthstone
5th and 45th Wedding Anniversary
Symbolises truth, wisdom and calmness
9 on the MOHS Scale



TOURMALINE

October birthstone
8th Wedding Anniversary
Symbolises balance, protection and endurance
7.5 on the MOHS Scale



TOPAZ

November birthstone
4th and 23rd Wedding Anniversary
Symbolises friendship and strength
8 on the MOHS Scale



ZIRCON

December birthstone
11th and 24th Wedding Anniversary
Symbolises wisdom, and wealth
7.5 on the MOHS Scale

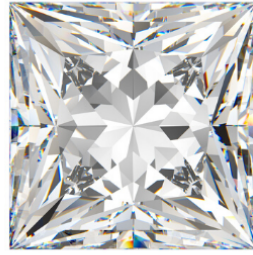
GEMSTONE CUT GUIDE



ROUND
BRILLIANT CUT



RADIANT
CUT



PRINCESS
CUT



ASSCHER
CUT



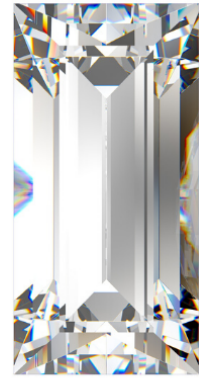
MARQUISE
CUT



OVAL
CUT



EMERALD
CUT



BAGUETTE
CUT



BRIOLETTE



DROP CUT



HALF-MOON
CUT



TRAPEZEIOD
CUT



GEMSTONE CUT GUIDE



CUSHION
CUT



HEART
CUT



TRILLIANT
CUT



TAPERED BAGUETTE
CUT



PEAR / TEARDROP
CUT



KITE / LOZENGE
CUT



FAN
CUT



WHISTLE
CUT



BULLET
CUT

