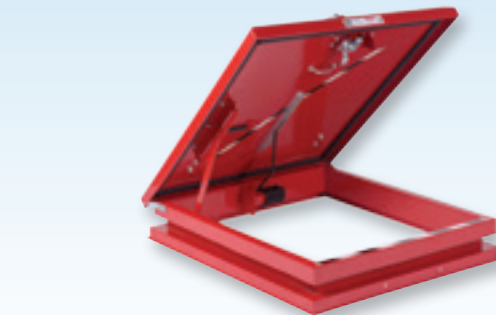
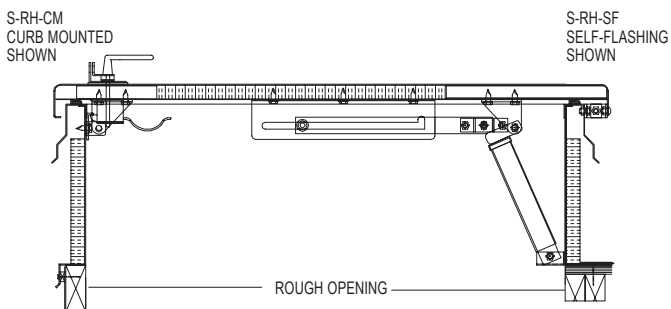
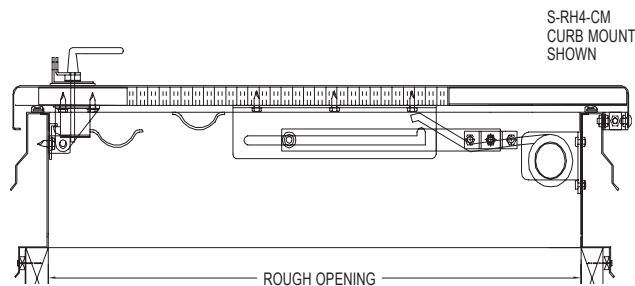


Optional
Dome

Acralight Solar's galvanized steel or aluminum roof access hatch is designed for safety and reliability. Standard model provides an extended cap flashing, pre-punched to receive a safety railing system or AcraGrab safety feature. Unique cross-broken lid design to eliminate ponding water. Standard 12" high self-flashing curb with wood nailer and a Federal Safety Red high gloss finish. Add an optional SkyTough dome in the lid for natural daylighting in the ladder well.



Acralight Solar's Retro-Hatch provides most of the features of a standard Acralight Solar's roof access hatch with a 4" high curb mounted base designed to mount on existing curbs. This design eliminates the expense of removing an existing roof hatch base when performing roof hatch repairs. Standard model provides an extended cap flashing, pre-punched, to receive a safety railing system or AcraGrab safety feature.



MODEL S-RH GALVANIZED (STEEL) or A-RH (ALUMINUM)

MODEL	ROUGH OPENING	MODEL	ROUGH OPENING
3030	30" x 30"	3636	36" x 36"
3036	30" x 36"	4848	48" x 48"
3054	30" x 54"		
3096	30" x 96"		

MODEL S-RH4-CM GALVANIZED (STEEL) or A-RH4-CM (ALUMINUM)

MODEL	ROUGH OPENING	MODEL	ROUGH OPENING
3030	30" x 30"	3636	36" x 36"
3036	30" x 36"	4848	48" x 48"
3054	30" x 54"		
3096	30" x 96"		



Railing System

OSHA Compliant roof hatch railing systems to protect the opening when the hatch is in the open position. Standard and custom sizes available.



AcraGrab

Provides a safer means of exiting or entering the roof hatch with a secure, permanently mounted 30" high handle

OPTIONS AVAILABLE: Dome in lid

Standard finish is Federal Safety Red. For primer only and other finishes please contact Acralight Solar Skylights.

Curb mounted units and custom sizes are available. Combination units with steel curbs and aluminum lids are available. Please contact Acralight Solar Skylights.

Model No. Example: 3036-S-RH 30" x 36" Galvanized Steel-Roof Hatch
 Model No. Example: 3036-A-RHD 30" x 36" Aluminum-Roof-Hatch-Domed lid

Model No. Example: 3036-S-RH4-CM
 30" x 36" Galvanized Steel-Roof-Hatch with 4" high Curb-Mounted base

Model No. Example: 3036-A-RH4-CM
 30" x 36" Aluminum-Roof-Hatch with 4" high Curb-Mounted base