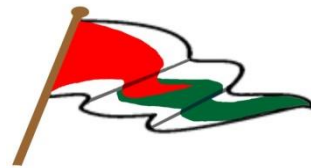




**NIAGARA-ON-THE-LAKE SAILING  
CLUB**  
and  
**YOUNGSTOWN YACHT CLUB**

The organizing authority is the host club  
(see the Sailing Schedule, NoR Addendum A)



**2023 Interclub Notice of Race (NoR)**

*The notation '[NP]' in a rule means that a boat may not protest another boat for breaking that rule. This changes RRS 60.1(a).*

**1 RULES**

- 1.1 The events are governed by the rules as defined in *The Racing Rules of Sailing*.
- 1.2 When racing one-design a boat shall follow the rules of her class.
- 1.3 When racing PHRF a boat shall follow the PHRF-Lake Ontario (PHRF-LO) rules.
- 1.4 Prescriptions of the national authority of the host club will apply.
- 1.5 For the Port Weller Race boats should be equipped for Offshore Special Regulations category 4 with Sail Canada prescriptions as found at:
  - (a) [https://fr.sailing.ca/wp-content/uploads/2023/02/sc\\_osr2022-2023\\_mo4.pdf](https://fr.sailing.ca/wp-content/uploads/2023/02/sc_osr2022-2023_mo4.pdf) for monohulls, or
  - (b) [https://fr.sailing.ca/wp-content/uploads/2023/02/sc\\_osr2022-2023\\_mu4.pdf](https://fr.sailing.ca/wp-content/uploads/2023/02/sc_osr2022-2023_mu4.pdf) for multihulls, except that boats shall meet the requirements for:
    - (i) 3.24 – Compass
    - (ii) 3.29.5 – VHF Transceiver
    - (iii) 4.03 – Soft Wood Plugs
    - (iv) 4.17 – Boat's Name (on buoyant equipment)

**2 SAILING INSTRUCTIONS**

- 2.1 The sailing instructions will be available online at the host club website:
  - (a) <http://www.yyc.org/>, or
  - (b) <https://niagaraonthelakesailingclub.com/>no less than 1 week before the event.

**3 COMMUNICATION**

- 3.1 The online official notice board is located at the host club website.
- 3.2 On the water, the race committee will make courtesy broadcasts to competitors on VHF radio. The channel will be stated in the SIs.
- 3.3 [DP] While racing, except in an emergency, a boat shall not make voice or data transmissions and shall not receive voice or data communication that is not available to all boats.

**4 ELIGIBILITY AND ENTRY**

4.1 The events are open to boats owned by members of the clubs as indicated in the 'Invited' column of NoR Addendum A as follows:

- (a) NOLSC: Niagara-on-the-Lake Sailing Club,
- (b) YYC: Youngstown Yacht Club,
- (c) Interclub: both YYC and NOLSC (note this NoR applies only to Interclub races),
- (d) or as indicated.

4.2 Other boats may be permitted to race at the sole discretion of the host club VC-Fleet.

4.3 Classes are defined as follows:

Event	Class	Class or Rating Rule	Handicap Range
Furlined	PHRF NFS	PHRF-LO – non-spinnaker	n/a
7-Year & October Cup	PHRF NFS	PHRF-LO – non-spinnaker	n/a
	PHRF	PHRF-LO	n/a
Wednesday evening series, Port Weller Race, Niagara Cup and Fall Regatta	Shark	Shark class rules	
	PHRF NFS	PHRF-LO – non-spinnaker	
	PHRF II	PHRF-LO	97 and larger
	PHRF I	PHRF-LO	smaller than 97

4.4 Eligible boats may enter by competing in an event.

4.5 A boat that has been scored other than Did Not Compete in one race of a series shall remain in that class through-out the series.

4.6 [DP] The person in charge of a Shark shall be a member in good standing of the Canadian Shark Class Association.

**5 FEES**

5.1 The entry fees are included in the club membership unless the word 'fee' is included in the 'Special Instr.' column of the NoR Addendum A. If fees apply, they will be included in the sailing instructions.

**6 SCHEDULE**

6.1 NoR Addendum A shows the dates of racing.

6.2 In column 'C/M' of NoR Addendum A, M is the number of races scheduled for the event.

6.3 One race is scheduled to be held each day except for:

- (a) Sharks during the Practice race, Ravine Vineyard, Clan MacLeod, Great Laker and Brox Company 1812 series where 2 races are scheduled to be held each day, and

(b) the Niagara Cup and Fall Regatta where all races are scheduled to be raced in one day.

6.4 The scheduled time of the warning signal for the first race each day is:

- (a) 1330 for the Furlined Cup and 7 Year Trophy (River Races),
- (b) 1840 for the Ravine Vineyard, Clan MacLeod and Great Laker Series,
- (c) 1015 for the Port Weller Race, Niagara Cup and Fall Series and
- (d) 1830 for the Brox Company 1812 Regatta
- (e) 1100 for the October Cup (River Race),

## **7 EQUIPMENT INSPECTION**

7.1 [DP] Each boat shall produce or verify the existence of a valid or a pending rating certificate.

## **8 VENUE**

8.1 NoR Addendum B shows the location of the racing areas.

8.2 The sailing instructions will indicate where the race(s) will start.

## **9 COURSES**

9.1 The marks that may be used are as follows:

- (a) Marks C and 1 through 8 are vertical cylinders. The relative locations of marks C and 1 through 8 are illustrated in Addendum C.
- (b) Mark C at the centre of the Olympic circle is located approximately 1.1 miles at a bearing of 67° mag. from the Niagara Light and Bell Buoy G3. The approximate position of C is N43°17.052', W079°03.175'.
- (c) G3 is the Niagara light and bell buoy at approximately N43°16'24.3", W079° 04'30.8".
- (d) R2 is the Niagara Bar light buoy at approximately N43°19'02.4", W079° 04'14.1".
- (e) b is the middle NOLSC mooring ball.
- (f) Inflatable tetrahedrons and floating balls as indicated in the sailing instructions.

## **10 SCORING**

10.1 1 race is required to be completed to constitute a series.

10.2 In column 'C/M' of NoR Addendum A:

- (a) When fewer than C races have been completed, a boat's series score will be the total of her race scores.
- (b) When C or more races have been completed, a boat's series score will be the total of her race scores excluding her worst score.
- (c) For Sharks during the Ravine Vineyard, Clan MacLeod and Great Laker Series Instructions (a) and (b) above are changed as follows:
  - (i) When fewer than six races in a series have been sailed, a boat's series score will be the total of her race scores.

- (ii) When more than six races in any series have been sailed, a boat's series score will be the total of her race scores excluding her worst score.
- (iii) When two races are held on a Wednesday evening the points from the first race will be used for scoring the NOLSC boat of the year.
- (iv) The score for races missed by a boat while she is competing in the Shark World Championships and/or Women's Keel Boat Championship will be points as described in RRS A9 (a). The scores of other boats will not be changed.

10.3 PHRF corrected times will be calculated using the "PHRF-LO Time-on-Time" (ToT) method where  $ToT = 566.431 / (401.431 + ToD)$ .

## **11 RISK STATEMENT**

11.1 RRS 3 states: 'The responsibility for a boat's decision to participate in a race or to continue to race is hers alone.' By participating in this event each competitor agrees and acknowledges that sailing is a potentially dangerous activity with inherent risks. These risks include strong winds and rough seas, sudden changes in weather, failure of equipment, boat handling errors, poor seamanship by other boats, loss of balance on an unstable platform and fatigue resulting in increased risk of injury. **Inherent in the sport of sailing is the risk of permanent, catastrophic injury or death by drowning, trauma, hypothermia, or other causes.**

## **12 INSURANCE**

12.1 [DP] [NP] Each participating boat shall be insured with valid third-party liability insurance with adequate third-party insurance.

## **13 PRIZES**

13.1 A prize will be given to the top 3 boats in each class.

## **14 FURTHER INFORMATION**

14.1 For further information please contact the VC-Fleet of YYC Mark Schimley [mschimley@aol.com](mailto:mschimley@aol.com), or the VC-Fleet of NOLSC Rick Sherk [rsherker@live.ca](mailto:rsherker@live.ca)

## Addendum A

YYC, NOLSC SAILING SCHEDULE 2023							
Month	Event	C/M	Day	Date(s)	Host	Invited	Special Instr.
<b>April</b>	Furlined (N)	4/5	Sun	2,9,16,23,30	NOLSC	Interclub	NFS
<b>May</b>	Seven Year (N)	3/3	Sun	7,14,28	NOLSC	Interclub	
	Port Weller & Return (N)		Sun	21	NOLSC	Interclub	
	Wednesday Practice Race	1/1	Wed	24	NOLSC	Interclub	
	Louis Mies Series	4/5	Tue	30	YYC	Interclub	Yes NFS
	J/70 Series		Tue	30	YYC	Interclub	Yes
	Ravine Vineyard Ser. (N/Y/R)	4/5	Wed	31	NOLSC	Interclub	
<b>June</b>	YYC Commissioning/Sailpast		Sat	3	YYC	YYC	
	Louis Mies Series	4/5	Tue	6,13,20,27	YYC	Interclub	NFS
	J/70 June Series		Tue	6,13,20,27	YYC	Interclub	Yes
	Ravine Vineyard Ser. (N/Y/R)	4/5	Wed	7,14,21,28	NOLSC	Interclub	
	YYC Secretary's Race		Sat	10	YYC	Interclub	NFS Fun Race
	NOLSC Sailpast		Sun	04	NOLSC	NOLSC	Yes
<b>July</b>	Jr. Sailing Alumni Regatta Party		Sat	1	YYC	Registrants	Yes
	Ed Rogers Series	4/5	Tue	4,11,18,25	YYC	Interclub	Yes NFS
	J/70 July Series		Tue	4,11,18,25	YYC	Interclub	Yes
	Clan MacLeod Series. (N/Y/R)	3/4	Wed	5,12,19,26	NOLSC	Interclub	
	YYC-GTA-YYC Overnight Race		Fri-Sat	7-8	YYC	Interclub	Yes
	YYC Hospice & Clambake		Fri	14	YYC	Registrants	Yes NFS
	Niagara Cup & Steak Fry	3/3	Sat	15	NOLSC	Registrants	
	CanAm Challenge		Sat-Sun	29-30	YYC	Registrants	<a href="#">CanAm 2023</a>
<b>Aug.</b>	Ed Rogers Series	4/5	Tue	1	YYC	Interclub	Yes NFS
	J/70 August Series		Tue	1, 8,15,22,29	YYC	Interclub	Yes
	Great Laker Series (N/Y/R)	3/4	Wed	2,9,16,30	NOLSC	Interclub	
	Olcott Stomp		Fri-Sun	4-6	YYC	Interclub	<a href="#">Stomp 2023</a>
	Don Kress Series	3/4	Tue	8,15,22,29	YYC	Interclub	Yes NFS
	World Championship Regatta		Fri-Fri	18-25	NOLSC	Sharks	<a href="#">CSCA</a>
<b>Sept.</b>	Doug Hooper Series	3/4	Tue	5,12,19,26	YYC	Interclub	Yes NFS
	J/70 September Series	3/4	Tue	5,12,19,26	YYC	Interclub	Yes
	Brox Company 1812 Series (N)	3/4	Wed	6,13,20,27	NOLSC	Interclub	
	Cock of the Walk		Sat	9	YYC	Interclub	Yes NFS Fun
	Fall Regatta (N/Y)	3/3	Sun	17	NOLSC	Interclub	
	Homecomers		Sat-Sun	30-1	NOLSC	Sharks	<a href="#">CSCA</a>
	<b>Oct.</b>	October Cup (N)	4/5	Sun	1,8,15,22,29	NOLSC	Interclub
	Tom Turkey		Sat	21	NOLSC	NOLSC	Yes, Fun Race
<b>Nov.</b>	YYC Awards Dinner		Sat	4	YYC	YYC	
	NOLSC Awards Dinner		Sun	12	NOLSC	NOLSC	

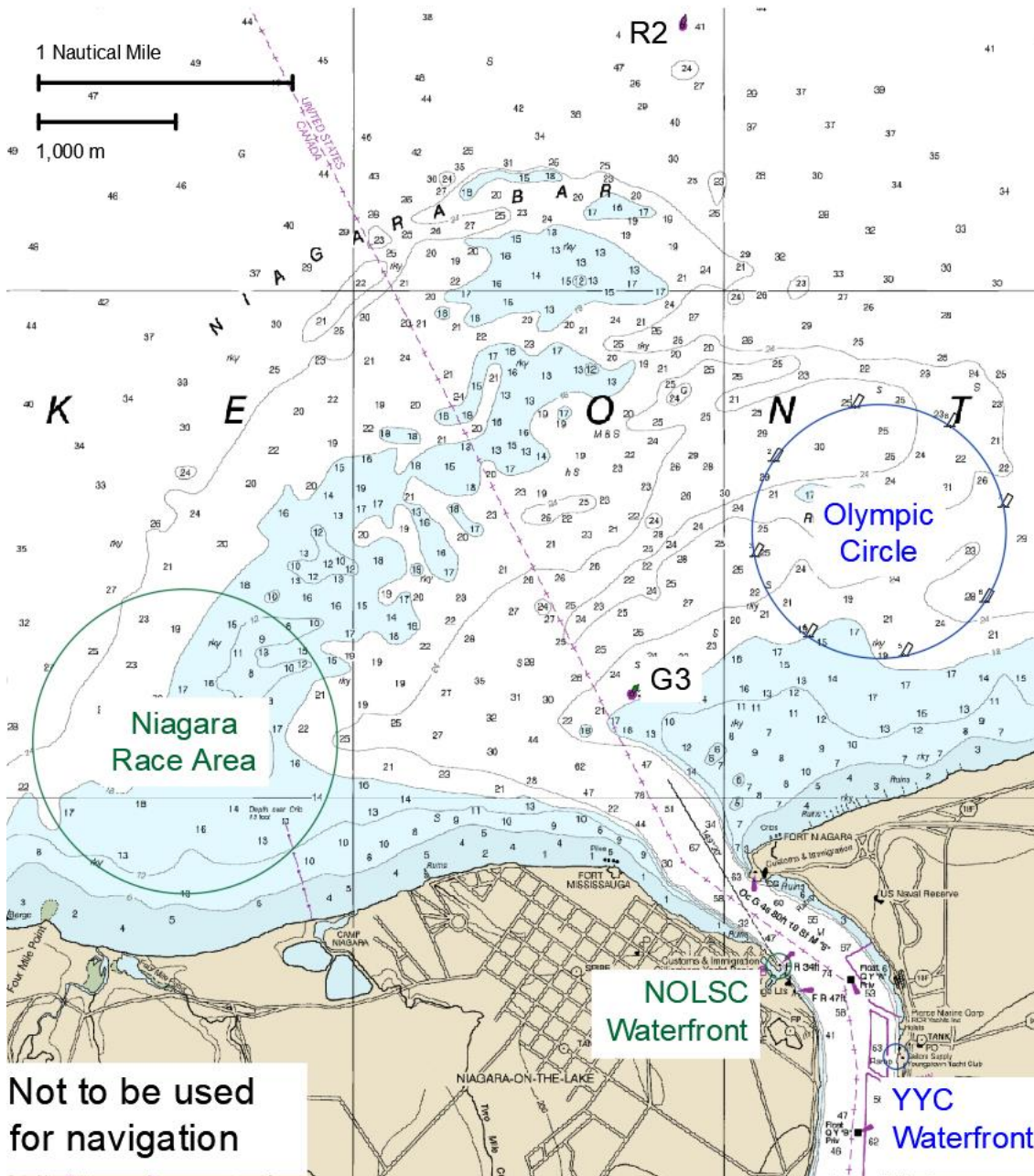
\* Counts toward NOLSC Boat of the Year (N)

\* Counts toward YYC Boat of the Year (Y)

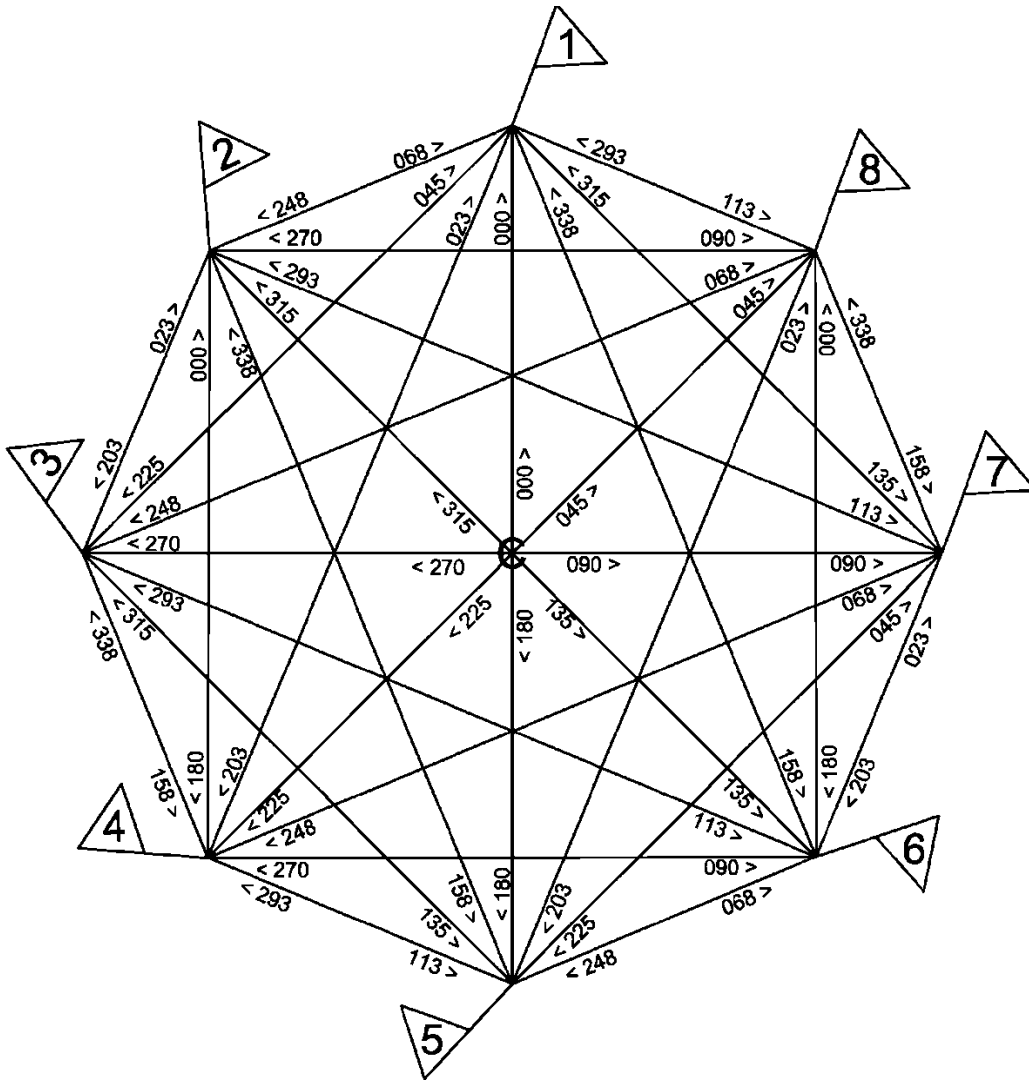
\* Counts toward River Championship (R)

**Many thanks to our Sponsors.**

## Addendum B Race Areas



## Addendum C: YYC-NOLSC Olympic Circle Diagram



		DISTANCE TABLE (Nautical Miles)							
To From	C	1	2	3	4	5	6	7	8
C	-	0.50	0.50	0.50	0.50	0.50	0.50	0.50	0.50
1	0.50	-	0.38	0.71	0.92	1.00	0.92	0.71	0.38
2	0.50	0.38	-	0.38	0.71	0.92	1.00	0.92	0.71
3	0.50	0.71	0.38	-	0.38	0.71	0.92	1.00	0.92
4	0.50	0.92	0.71	0.38	-	0.38	0.71	0.92	1.00
5	0.50	1.00	0.92	0.71	0.38	-	0.38	0.71	0.92
6	0.50	0.92	1.00	0.92	0.71	0.38	-	0.38	0.71
7	0.50	0.71	0.92	1.00	0.92	0.71	0.38	-	0.38
8	0.50	0.38	0.71	0.92	1.00	0.92	0.71	0.38	-

Inaccuracies in the above bearings or distances will not be grounds for redress.