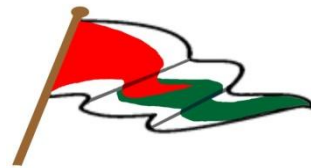




**NIAGARA-ON-THE-LAKE SAILING  
CLUB**  
and  
**YOUNGSTOWN YACHT CLUB**

The organizing authority is the host club  
(see the Sailing Schedule, NoR Addendum A)



**2025 Interclub Notice of Race (NoR)**

Revision 2 16 February 2025

*The notation '[NP]' in a rule means that a boat may not protest another boat for breaking that rule. This changes RRS 60.1(a).*

**1 RULES**

- 1.1 The events are governed by the rules as defined in *The Racing Rules of Sailing*.
- 1.2 When racing one-design a boat shall follow the rules of her class.
- 1.3 When racing PHRF a boat shall follow the PHRF-Lake Ontario (PHRF-LO) rules.
- 1.4 Prescriptions of the national authority of the host club will apply.
- 1.5 For the Port Weller Race boats should be equipped for Offshore Special Regulations category 4 with Sail Canada prescriptions as found at <https://www.sailing.ca/special-regulations/>, except that boats shall meet the requirements for:
  - (a) 3.24 – Compass
  - (b) 3.29.2 – VHF Transceiver
  - (c) 4.03 – Soft Wood Plugs
  - (d) 4.17 – Boat's Name (on buoyant equipment)
- 1.6 For the Niagara Cup the instructions available at:  
<https://theclubspot.com/regatta/7ha2UOt1dv>  
will take precedence.

**2 SAILING INSTRUCTIONS**

- 2.1 The sailing instructions will be available online at the host club website:
  - (a) <http://www.yyc.org/>, or
  - (b) <https://niagaraonthelakesailingclub.com/>no less than 1 week before the event.

**3 COMMUNICATION**

- 3.1 The online official notice board is located at the host club website.
- 3.2 On the water, the race committee will make courtesy broadcasts to competitors on VHF radio. The channel will be stated in the SIs.
- 3.3 [DP] While racing, except in an emergency, a boat shall not make voice or data transmissions and shall not receive voice or data communication that is not available to all boats.

#### 4 ELIGIBILITY AND ENTRY

4.1 The events are open to boats owned by members of the clubs as indicated in the 'Invited' column of NoR Addendum A as follows:

- (a) NOLSC: Niagara-on-the-Lake Sailing Club,
- (b) YYC: Youngstown Yacht Club,
- (c) Interclub: both YYC and NOLSC (note this NoR applies only to Interclub races),
- (d) or as indicated.

4.2 Other boats may be permitted to race at the sole discretion of the host club VC-Fleet.

4.3 A boat racing PHRF or NFS shall produce a valid rating certificate or have one pending.

4.4 Classes are defined as follows:

Event	Class	Class or Rating Rule	Handicap Range
Furlined	PHRF NFS	PHRF-LO – non-spinnaker	n/a
7-Year & October Cup	PHRF NFS	PHRF-LO – non-spinnaker	n/a
	PHRF	PHRF-LO	n/a
Wednesday evening series, Port Weller Race and Niagara Cup	Shark	Shark class rules	
	PHRF NFS	PHRF-LO – non-spinnaker	
	PHRF II	PHRF-LO	97 and larger
	PHRF I	PHRF-LO	smaller than 97

4.5 Eligible boats may enter by competing in an event.

4.6 A boat that has been scored other than Did Not Compete in one race of a series shall remain in that class through-out the series.

4.7 [DP] The person in charge of a Shark shall be a member in good standing of the Canadian Shark Class Association.

#### 5 FEES

5.1 The entry fees are included in the club membership unless the word 'fee' is included in the 'Special Instr.' column of the NoR Addendum A. If fees apply, they will be included in the sailing instructions.

#### 6 SCHEDULE

6.1 NoR Addendum A shows the dates of racing.

6.2 In column 'C/M' of NoR Addendum A, M is the number of races scheduled for the event.

6.3 One race is scheduled to be held each day except for:

- (a) Sharks during the Practice race, Ravine Vineyard, Clan MacLeod, Great Laker and Brox Company 1812 series where 2 races are scheduled to be held each day, and

(b) the Niagara Cup where all races are scheduled to be raced in one day.

6.4 The scheduled time of the warning signal for the first race each day is:

- (a) 1330 for the Furlined Cup and 7 Year Trophy (River Races),
- (b) 1840 for the Ravine Vineyard, Clan MacLeod and Great Laker Series,
- (c) 1015 for the Port Weller Race and Niagara Cup,
- (d) 1830 for the Brox Company 1812 Wednesday (Sharks only) Series,
- (e) 1100 for the Brox Company 1812 Saturday (PHRF) Series, and
- (f) 1100 for the October Cup (River Race).

## **7 EQUIPMENT INSPECTION**

7.1 [DP] Each boat shall produce or verify the existence of a valid or a pending rating certificate.

## **8 VENUE**

8.1 NoR Addendum B shows the location of the racing areas.

8.2 The sailing instructions will indicate where the race(s) will start.

## **9 COURSES**

9.1 The marks that may be used are as follows:

- (a) Marks C and 1 through 8 are vertical cylinders. The relative locations of marks C and 1 through 8 are illustrated in Addendum C.
- (b) Mark C at the centre of the Olympic circle is located approximately 1.1 miles at a bearing of 67° mag. from the Niagara Light and Bell Buoy G3. The approximate position of C is N43°17.052', W079°03.175'.
- (c) G3 is the Niagara light and bell buoy at approximately N43°16'24.3", W079° 04'30.8".
- (d) R2 is the Niagara Bar light buoy at approximately N43°19'02.4", W079° 04'14.1".
- (e) b is the middle NOLSC mooring ball.
- (f) Inflatable tetrahedrons and floating balls as indicated in the sailing instructions.

## **10 SCORING**

10.1 1 race is required to be scored to constitute a series.

10.2 In column 'C/M' of NoR Addendum A:

- (a) When fewer than C races have been scored, a boat's series score will be the total of her race scores.
- (b) When C or more races have been scored, a boat's series score will be the total of her race scores excluding her worst score.
- (c) For Sharks during the Ravine Vineyard, Clan MacLeod and Great Laker Series Instructions (a) and (b) above are changed as follows:
  - (i) When fewer than six races in a series have been sailed, a boat's series score will be the total of her race scores.

- (ii) When more than six races in any series have been sailed, a boat's series score will be the total of her race scores excluding her worst score.
  - (iii) When two races are held on a Wednesday evening the points from the first race will be used for scoring the NOLSC boat of the year.
  - (iv) The score for races missed by a boat while she is competing in the Shark World Championships and/or Women's Keel Boat Championship will be points as described in RRS A9 (a). The scores of other boats will not be changed.
- 10.3 PHRF corrected times will be calculated using the "PHRF-LO Time-on-Time" (ToT) method where  $ToT = 566.431 / (401.431 + ToD)$ .
- 10.4 RRS 90.3 (e) applies.
- 10.5 RRS A5.3 applies.
- 10.6 For the Brox Company 1812 Series, a Shark racing one-design on Wednesdays and PHRF on Saturdays shall declare in advance, by notifying the NOLSC VC-Fleet, which one of those series will count toward the NOLSC boat of the year.

## 11 RISK STATEMENT

- 11.1 RRS 3 states: 'The responsibility for a boat's decision to participate in a race or to continue to race is hers alone.' By participating in this event each competitor agrees and acknowledges that sailing is a potentially dangerous activity with inherent risks. These risks include strong winds and rough seas, sudden changes in weather, failure of equipment, boat handling errors, poor seamanship by other boats, loss of balance on an unstable platform and fatigue resulting in increased risk of injury. **Inherent in the sport of sailing is the risk of permanent, catastrophic injury or death by drowning, trauma, hypothermia, or other causes.**

## 12 INSURANCE

- 12.1 [DP] [NP] Each participating boat shall be insured with valid third-party liability insurance with adequate third-party insurance.

## 13 PRIZES

- 13.1 A prize will be given to the top 3 boats in each class.

## 14 FURTHER INFORMATION

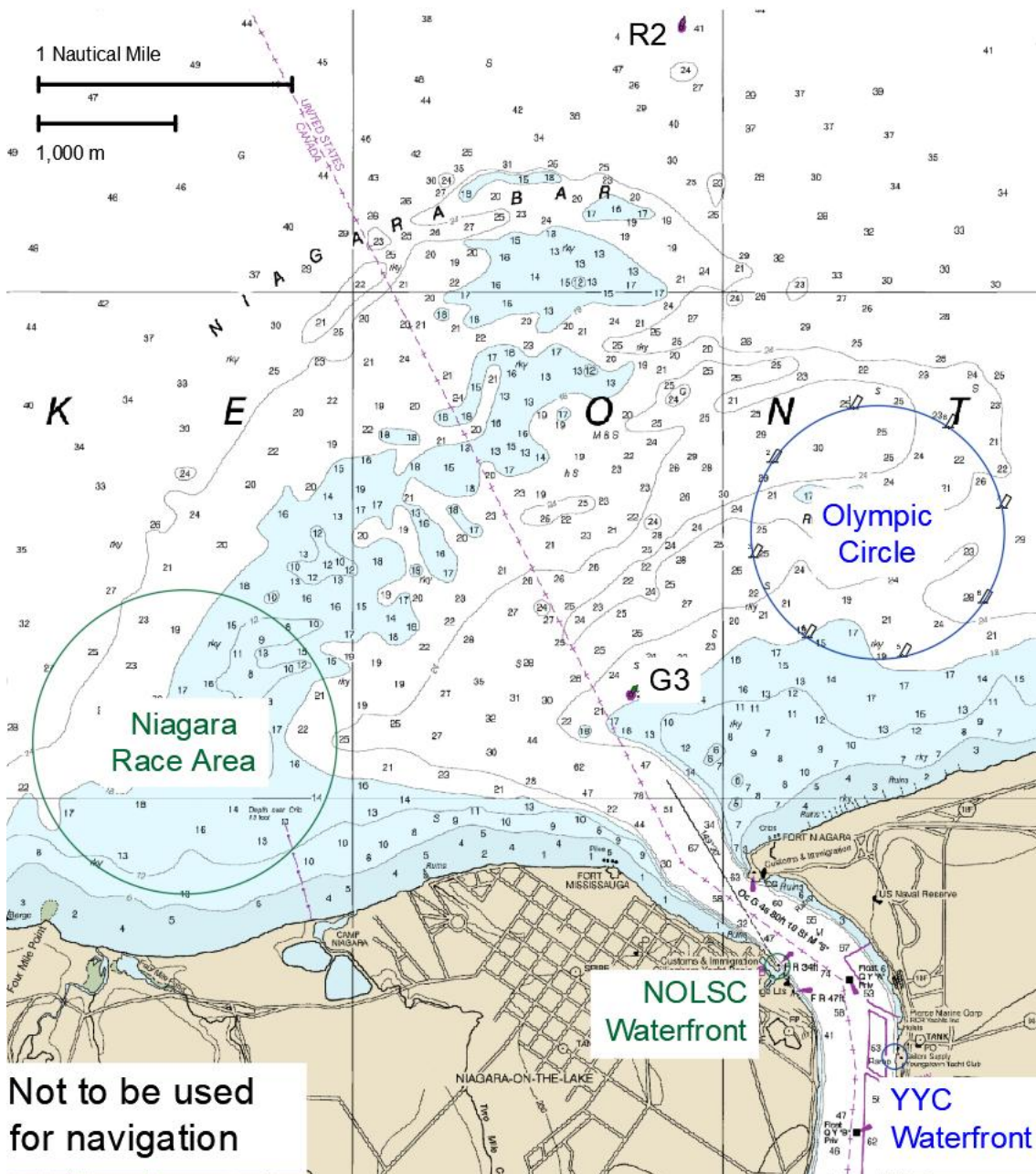
- 14.1 For further information please contact the VC-Fleet of YYC Chris Doyle [fleet@yyc.org](mailto:fleet@yyc.org), or the VC-Fleet of NOLSC Norm Behring [nbehring@sympatico.ca](mailto:nbehring@sympatico.ca).

# Addendum A

YYC, NOLSC SAILING SCHEDULE 2025							
Month	Event	C/M	Day	Date(s)	Host	Invited	Special Instr.
<b>April</b>	Furlined Cup (N)	3/4	Sun	6,13,20,27	NOLSC	Interclub	NFS
<b>May</b>	Seven Year Trophy (N)	3/3	Sun	4,11,25	NOLSC	Interclub	
	Port Weller & Return (N)		Sun	18	NOLSC	Interclub	
	Wednesday Practice Race	1/1	Wed	21	NOLSC	Interclub	
	Louis Mies Series	4/5	Tue	27	YYC	Interclub	Yes NFS
	Ravine Vineyard Ser. (N/Y/R)	4/5	Wed	28	NOLSC	Interclub	
	YYC Commissioning/Sailpast		Sat	31	YYC	YYC	
<b>June</b>	NOLSC Sailpast		Sun	1	NOLSC	NOLSC	
	Louis Mies Series	4/5	Tue	3,10,17,24	YYC	Interclub	Yes NFS
	Ravine Vineyard Ser. (N/Y/R)	4/5	Wed	4,11,18,25	NOLSC	Interclub	
	YYC Secretary's Race		Sat	tba	YYC	Interclub	Yes NFS Fun Race
<b>July</b>	Ed Rogers Series	4/5	Tue	1,8,15,22,29	YYC	Interclub	Yes NFS
	Clan MacLeod Series. (N/Y/R)	4/5	Wed	2,9,16,23,30	NOLSC	Interclub	
	Niagara Cup & Steak BBQ	5/5	Sat	12	NOLSC	Registrants	
	Jr. CanAm Regatta		Tue-Wed	15-16	YYC	Registrants	Yes
	LO Nonsuch Rendezvous		Fri-Sun	18-20	YYC-OYC	Registrants	Yes
	Youngstown Chase		Sat-Sun	26-27	YYC	Registrants	Yes
<b>Aug.</b>	Don Kress Series	4/5	Tue	5,12,19,26	YYC	Interclub	Yes NFS
	Great Laker Series (N/Y/R)	3/4	Wed	6,13,20,27	NOLSC	Interclub	
<b>Sept.</b>	Don Kress Series	4/5	Tue	2	YYC	Interclub	Yes NFS
	Brox Company 1812 Series (N)	3/3	Wed	3,10,17	NOLSC	Interclub	Sharks Only
	Brox Company 1812 Series (N)	3/3	Sat	6,13,20	YYC	Interclub	PHRF
	Doug Hooper Series	3/4	Tue	9,16,23,30	YYC	Interclub	Yes NFS
	Homecomers		Sat-Sun	28-29	NOLSC	Sharks	<a href="#">CSCA</a>
<b>Oct.</b>	October Cup (N)	3/4	Sun	5,12,19,26	NOLSC	Interclub	
	Tom Turkey		Sat	18	NOLSC	NOLSC	Yes, Fun Race
<b>Nov.</b>	YYC Awards Dinner			tba	YYC	YYC	
	NOLSC Awards Dinner		Sun	9	NOLSC	NOLSC	
<b>* Counts toward NOLSC Boat of the Year (N)</b> <b>* Counts toward YYC Boat of the Year (Y)</b> <b>* Counts toward River Championship (R)</b>							

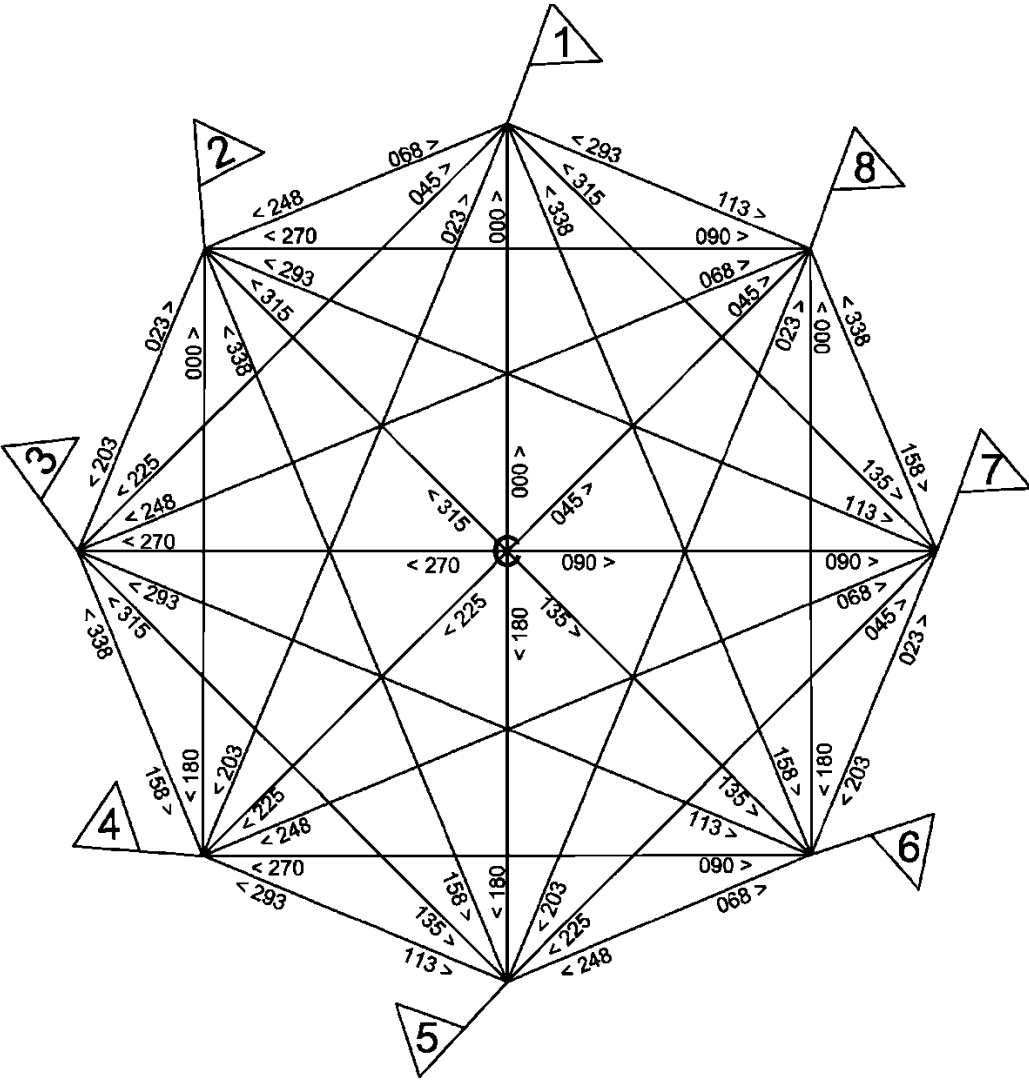
**Many thanks to our Sponsors.**

## Addendum B Race Areas





# Addendum C: YYC-NOLSC Olympic Circle Diagram



DISTANCE TABLE (Nautical Miles)									
To From	C	1	2	3	4	5	6	7	8
C	-	0.50	0.50	0.50	0.50	0.50	0.50	0.50	0.50
1	0.50	-	0.38	0.71	0.92	1.00	0.92	0.71	0.38
2	0.50	0.38	-	0.38	0.71	0.92	1.00	0.92	0.71
3	0.50	0.71	0.38	-	0.38	0.71	0.92	1.00	0.92
4	0.50	0.92	0.71	0.38	-	0.38	0.71	0.92	1.00
5	0.50	1.00	0.92	0.71	0.38	-	0.38	0.71	0.92
6	0.50	0.92	1.00	0.92	0.71	0.38	-	0.38	0.71
7	0.50	0.71	0.92	1.00	0.92	0.71	0.38	-	0.38
8	0.50	0.38	0.71	0.92	1.00	0.92	0.71	0.38	-

Inaccuracies in the above bearings or distances will not be grounds for redress.