



L-S INDUSTRIES

INDUSTRIAL PACKAGING SOLUTIONS

A Woman-Owned Business | Knoxville, TN

www.L-SI.com

8902 Valgro Road
Knoxville, TN 37920
865-579-6294 Phone
865-577-2193 Fax



Corrugated Plastic Recycle Bins

Corrugated plastic recycle bins are more durable than temporary paper bins and less expensive than more permanent structures. It's the perfect material for a lightweight, portable recycle bin.



1529 Bin (29 Gal)



2646 Bin (44 Gal)



Custom Bins

www.L-SI.com

Toll Free: 1-800-825-2561



2646 Bin Style

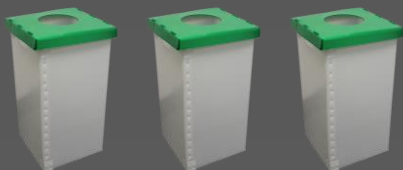
Specifications

- Made from polyethylene or polypropylene resin; 100% recyclable
- Standard walls are approximately 4mm thick (1/6")

The photos below show a cardboard recycling bin used by a major retailer. These bins are placed outside but under cover. This unsightly damage could be prevented with a corrugated plastic bin. Unaffected by moisture and resist tears, these bins last longer in general; providing ongoing cost savings.



Also available: Corrugated plastic totes, trays, bins, and boxes. Visit our website at www.L-SI.com for more details.



Corrugated Plastic Recycle Bins

L-S Industries, Inc. provides quality bins made of corrugated plastic for use in recycling and waste. These products are made in the U.S.A. and are fully recyclable (either code 2 PE or code 5 PP).

Why use Corrugated Plastic Bins?

Corrugated plastic has many advantages over traditional materials used to make recycle and waste receptacles. It lasts much longer than corrugated paper bins and it's not as expensive as molded plastic or more permanent materials. It's light-weight which makes it portable. Here are some of the other advantages:

- **Weather-resistant and unaffected by most chemical agents**
- **More durable than paper bins, resists tears and punctures**
- **Ongoing cost savings due to longer life cycle**
- **It's a cleaner product, no fiber dust or residue like cardboard**
- **Can be wiped down with standard cleaning products**
- **Available in a variety of colors**
- **The bin itself can be recycled when ready to retire**

Our available bins are:

1529 Bin with Lid (29 gallon)

15"Wx15"Dx30"H (pictured on front)

Minimum Order: 100

Pallet Quantity: 100

Weight per piece: 3.3lbs

Colors available: Natural, White, Black, Red, Blue, Green, Yellow, Grey

2646 Bin with Lid (44 gallon)

20 1/4"Wx17"Dx38 1/4"H (3844)

Minimum Order: 140

Pallet Quantity: 70

Weight per piece: 5.8lbs respectively

Colors available: Natural, White, Black, Red, Blue, Green, Yellow, Grey

Custom Prints available

Custom Bins

Size, wall thickness, and color to customer specification

Contact Customer Service Today:

Phone: 865-579-6294 x 105

Toll Free: 800-825-2561